

EXTRACTION OIL & GAS

WELD COUNTY, COLORADO (NAD 83)

NW NE SEC. 5 T5N R65W 6th P.M.

DT-MARTINEZ C5-5-6

ORIGINAL WELLBORE

17 November, 2014

Plan: PROPOSAL #2

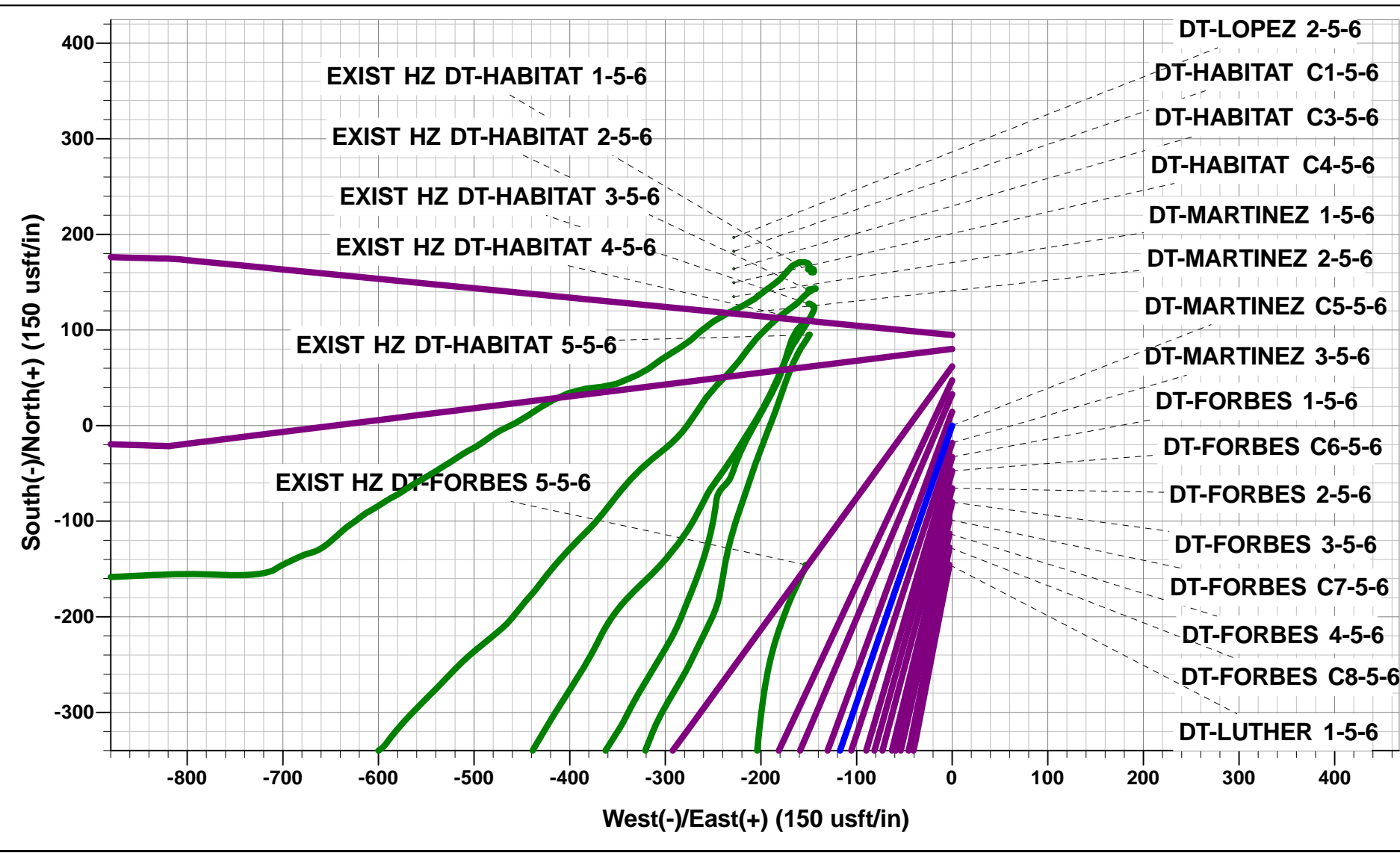




Project: WELD COUNTY, COLORADO (NAD 83)
Site: NW NE SEC. 5 T5N R65W 6th P.M.
Well: DT-MARTINEZ C5-5-6
Wellbore: ORIGINAL WELLBORE
Design: PROPOSAL #2

ANNOTATIONS									
TVD	MD	Inc	Azi	+N/-S	+E/-W	Vsect	Dep	Annotation	
1650.0	1650.0	0.00	0.00	0.0	0.0	0.0	0.0	START NUDDGE (6°/100ft BUR)	
2165.4	2194.4	32.66	199.04	-142.8	-49.3	81.2	151.0	EOB TO 32.66° INC	
5801.6	6513.7	32.66	199.04	-2346.3	-809.7	1334.8	2482.1	END OF TANGENT	
6317.0	7058.1	0.00	0.00	-2489.1	-859.0	1416.0	2633.1	EOD TO VERTICAL	
6467.0	7208.1	0.00	0.00	-2489.1	-859.0	1416.0	2633.1	KOP (10°/100ft BUR)	
7040.0	8108.1	90.00	273.37	-2455.4	-1431.0	1964.4	3206.1	7" ICP - DT-MARTINEZ C5-5-6	
7040.0	15186.2	90.00	273.38	-2038.7	-8496.7	8737.9	10284.2	BHL - DT-MARTINEZ C5-5-6	

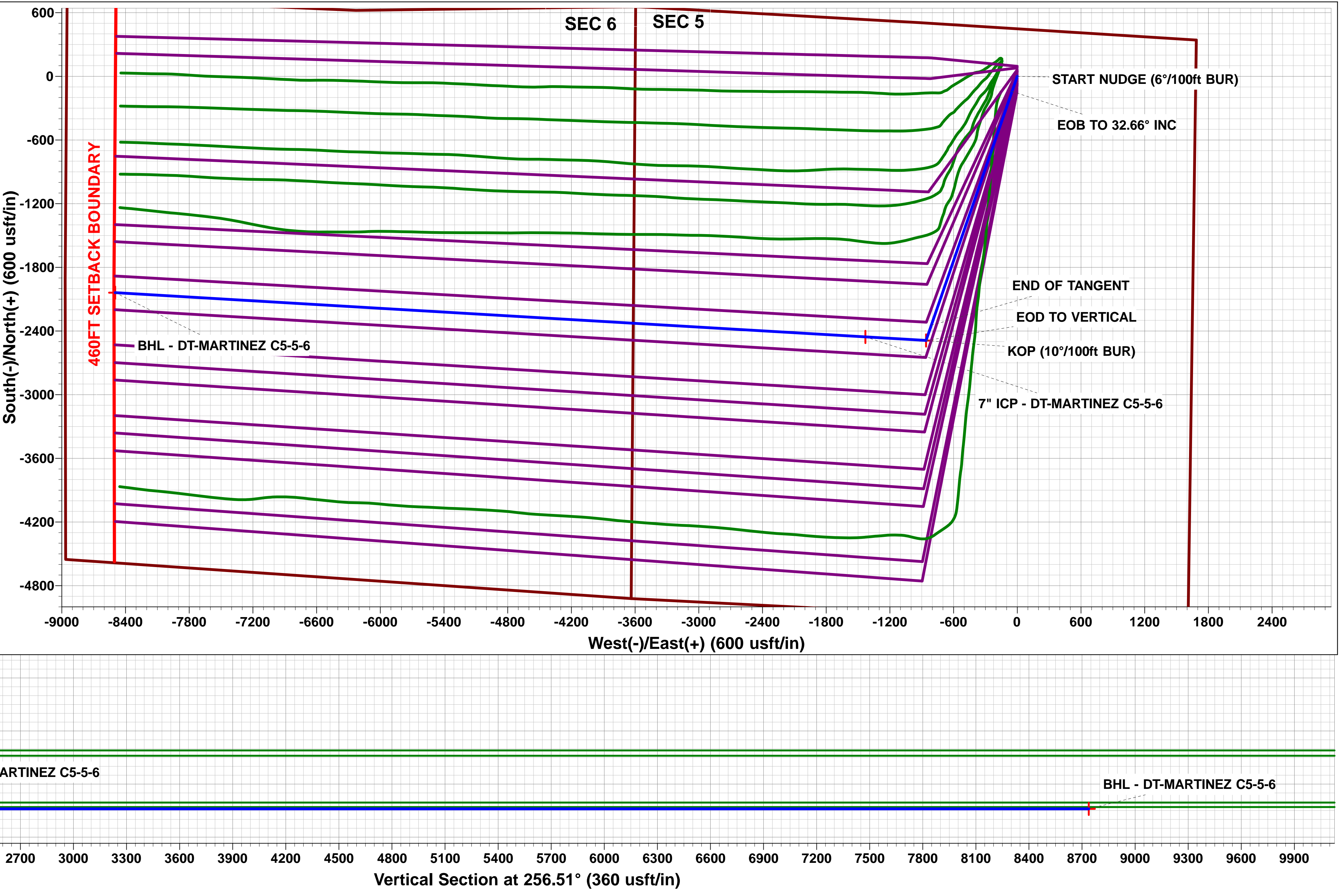
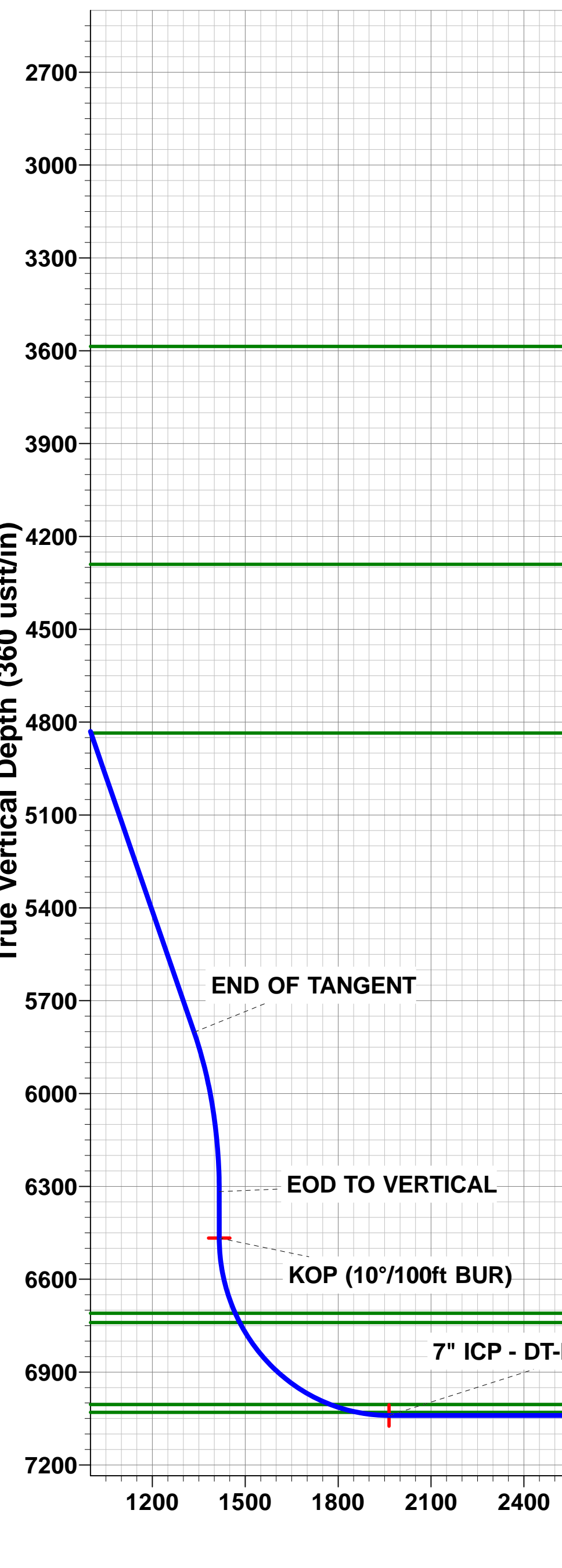
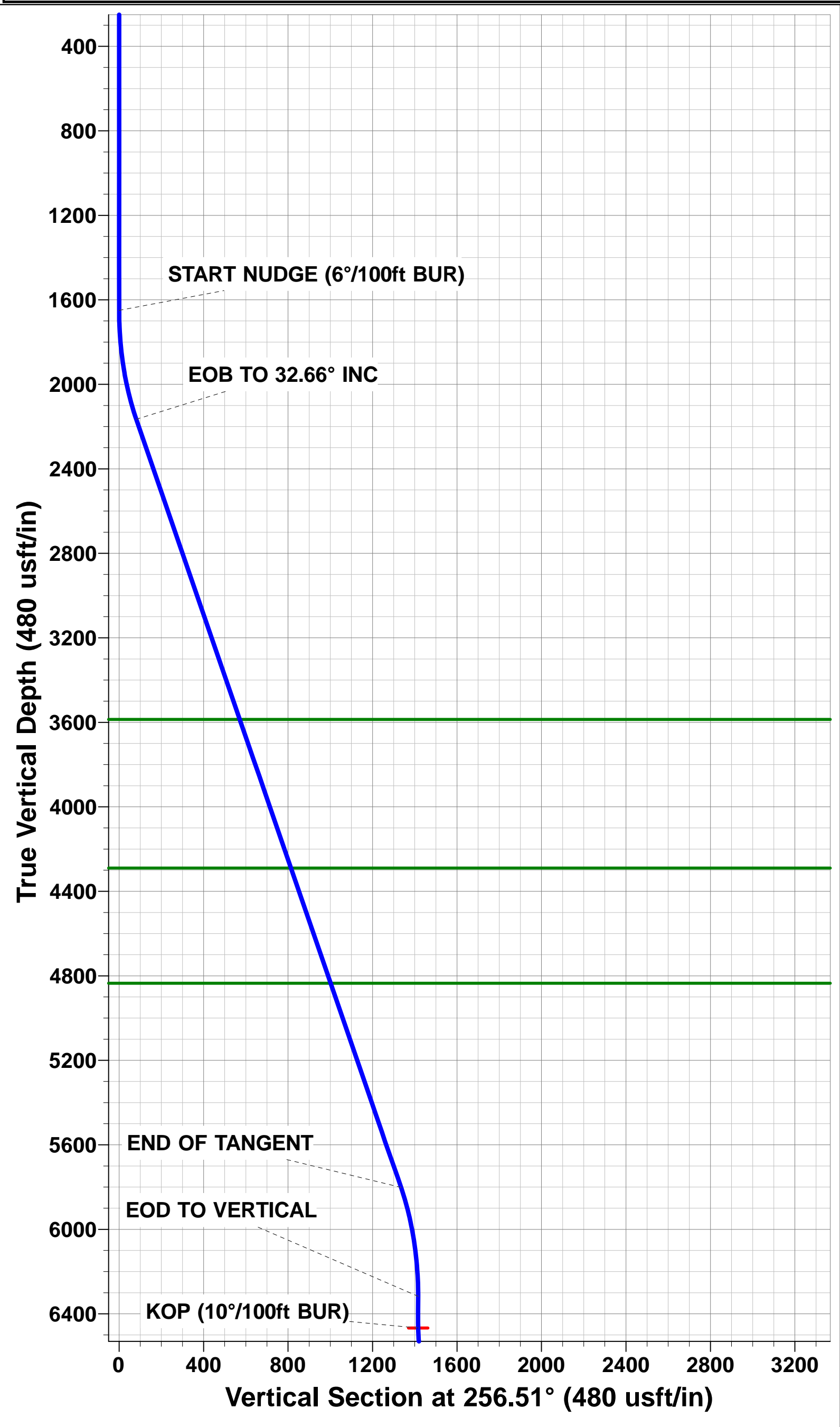
WELLBORE TARGET DETAILS (LAT/LONG)					
Name	TVD	+N/-S	+E/-W	Latitude	Longitude
KOP - DT-MARTINEZ C5-5-6	6467.0	-2489.1	-859.0	40.428438	-104.686815
7" ICP - DT-MARTINEZ C5-5-6	7040.0	-2455.4	-1431.0	40.428530	-104.688870
BHL - DT-MARTINEZ C5-5-6	7040.0	-2038.7	-8496.7	40.429670	-104.714250



FORMATION TOP DETAILS		
TVDPath	MDPath	Formation
3586.0	3881.9	PARKMAN
4290.0	4718.1	SUSSEX
4835.0	5365.5	SHANNON
6710.0	7459.0	SHARON SPRINGS
6740.0	7492.6	NIOBRARA
7005.0	7906.8	FORT HAYS
7030.0	8000.9	CODELL

Azimuths to True North
Magnetic North: 8.37°

Magnetic Field
Strength: 52801.4snT
Dip Angle: 66.97°
Date: 08/11/2014
Model: IGRF2010



Planning Report



Database:	EDM 5000.1 Single User Db	Local Co-ordinate Reference:	Well DT-MARTINEZ C5-5-6
Company:	EXTRACTION OIL & GAS	TVD Reference:	KB-EST @ 4657.0usft (SAV 802)
Project:	WELD COUNTY, COLORADO (NAD 83)	MD Reference:	KB-EST @ 4657.0usft (SAV 802)
Site:	NW NE SEC. 5 T5N R65W 6th P.M.	North Reference:	True
Well:	DT-MARTINEZ C5-5-6	Survey Calculation Method:	Minimum Curvature
Wellbore:	ORIGINAL WELLBORE		
Design:	PROPOSAL #2		

Project	WELD COUNTY, COLORADO (NAD 83)		
Map System:	US State Plane 1983	System Datum:	Mean Sea Level
Geo Datum:	North American Datum 1983		
Map Zone:	Colorado Northern Zone		Using geodetic scale factor

Site	NW NE SEC. 5 T5N R65W 6th P.M.		
Site Position:		Northing:	1,402,409.16usft
From:	Lat/Long	Easting:	3,226,987.53usft
Position Uncertainty:	0.0 usft	Slot Radius:	1.10000ft
		Latitude:	40.435150
		Longitude:	-104.684560
		Grid Convergence:	0.53 °

Well	DT-MARTINEZ C5-5-6		
Well Position	+N-S	43.7 usft	Northing:
	+E-W	231.1 usft	Easting:
Position Uncertainty		0.0 usft	Wellhead Elevation:
			Latitude:
			Longitude:
			Ground Level:

Wellbore	ORIGINAL WELLBORE				
Magnetics	Model Name	Sample Date	Declination (°)	Dip Angle (°)	Field Strength (nT)
	IGRF2010	08/11/2014	8.37	66.97	52,801

Design	PROPOSAL #2			
Audit Notes:				
Version:	Phase:	PROTOTYPE	Tie On Depth:	0.0
Vertical Section:	Depth From (TVD) (usft)	+N-S (usft)	+E-W (usft)	Direction (°)
	0.0	0.0	0.0	256.51

Plan Sections											
MD (usft)	Inc (°)	Azi (°)	Vertical Depth	SS (usft)	+N-S (usft)	+E-W (usft)	Dogleg Rate (°/100usf)	Build Rate (°/100usf)	Turn Rate (°/100usf)	TFO (°)	Target
0.0	0.00	0.00	0.0	-4,657.0	0.0	0.0	0.00	0.00	0.00	0.00	
1,650.0	0.00	0.00	1,650.0	-3,007.0	0.0	0.0	0.00	0.00	0.00	0.00	
2,194.4	32.66	199.04	2,165.4	-2,491.6	-142.8	-49.3	6.00	6.00	0.00	199.04	
6,513.7	32.66	199.04	5,801.6	1,144.6	-2,346.3	-809.7	0.00	0.00	0.00	0.00	
7,058.1	0.00	0.00	6,317.0	1,660.0	-2,489.1	-859.0	6.00	-6.00	0.00	180.00	
7,208.1	0.00	0.00	6,467.0	1,810.0	-2,489.1	-859.0	0.00	0.00	0.00	0.00	KOP - DT-MARTINI
8,108.1	90.00	273.37	7,040.0	2,383.0	-2,455.4	-1,431.0	10.00	10.00	-9.63	273.37	7" ICP - DT-MARTI
15,186.2	90.00	273.38	7,040.0	2,383.0	-2,038.7	-8,496.7	0.00	0.00	0.00	84.92	BHL - DT-MARTINE

Planning Report



Database:	EDM 5000.1 Single User Db	Local Co-ordinate Reference:	Well DT-MARTINEZ C5-5-6
Company:	EXTRACTION OIL & GAS	TVD Reference:	KB-EST @ 4657.0usft (SAV 802)
Project:	WELD COUNTY, COLORADO (NAD 83)	MD Reference:	KB-EST @ 4657.0usft (SAV 802)
Site:	NW NE SEC. 5 T5N R65W 6th P.M.	North Reference:	True
Well:	DT-MARTINEZ C5-5-6	Survey Calculation Method:	Minimum Curvature
Wellbore:	ORIGINAL WELLBORE		
Design:	PROPOSAL #2		

Planned Survey

MD (usft)	Inc (°)	Azi (°)	TVD (usft)	SS (usft)	+N/-S (usft)	+E/-W (usft)	Vertical Section (usft)	Dogleg Rate (°/100usft)	Build Rate (°/100usft)	Turn Rate (°/100usft)
0.0	0.00	0.00	0.0	4,657.00	0.0	0.0	0.0	0.00	0.00	0.00
100.0	0.00	0.00	100.0	4,557.00	0.0	0.0	0.0	0.00	0.00	0.00
200.0	0.00	0.00	200.0	4,457.00	0.0	0.0	0.0	0.00	0.00	0.00
300.0	0.00	0.00	300.0	4,357.00	0.0	0.0	0.0	0.00	0.00	0.00
400.0	0.00	0.00	400.0	4,257.00	0.0	0.0	0.0	0.00	0.00	0.00
500.0	0.00	0.00	500.0	4,157.00	0.0	0.0	0.0	0.00	0.00	0.00
600.0	0.00	0.00	600.0	4,057.00	0.0	0.0	0.0	0.00	0.00	0.00
700.0	0.00	0.00	700.0	3,957.00	0.0	0.0	0.0	0.00	0.00	0.00
800.0	0.00	0.00	800.0	3,857.00	0.0	0.0	0.0	0.00	0.00	0.00
900.0	0.00	0.00	900.0	3,757.00	0.0	0.0	0.0	0.00	0.00	0.00
1,000.0	0.00	0.00	1,000.0	3,657.00	0.0	0.0	0.0	0.00	0.00	0.00
1,100.0	0.00	0.00	1,100.0	3,557.00	0.0	0.0	0.0	0.00	0.00	0.00
1,200.0	0.00	0.00	1,200.0	3,457.00	0.0	0.0	0.0	0.00	0.00	0.00
1,300.0	0.00	0.00	1,300.0	3,357.00	0.0	0.0	0.0	0.00	0.00	0.00
1,400.0	0.00	0.00	1,400.0	3,257.00	0.0	0.0	0.0	0.00	0.00	0.00
1,500.0	0.00	0.00	1,500.0	3,157.00	0.0	0.0	0.0	0.00	0.00	0.00
1,600.0	0.00	0.00	1,600.0	3,057.00	0.0	0.0	0.0	0.00	0.00	0.00
START NUDGE (6°/100ft BUR)										
1,650.0	0.00	0.00	1,650.0	3,007.00	0.0	0.0	0.0	0.00	0.00	0.00
1,700.0	3.00	199.04	1,700.0	2,957.02	-1.2	-0.4	0.7	6.00	6.00	0.00
1,800.0	9.00	199.04	1,799.4	2,857.62	-11.1	-3.8	6.3	6.00	6.00	0.00
1,900.0	15.00	199.04	1,897.2	2,759.85	-30.8	-10.6	17.5	6.00	6.00	0.00
2,000.0	21.00	199.04	1,992.2	2,664.78	-60.0	-20.7	34.1	6.00	6.00	0.00
2,100.0	27.00	199.04	2,083.5	2,573.47	-98.4	-34.0	56.0	6.00	6.00	0.00
EOB TO 32.66° INC										
2,194.4	32.66	199.04	2,165.4	2,491.61	-142.8	-49.3	81.2	6.00	6.00	0.00
2,200.0	32.66	199.04	2,170.1	2,486.90	-145.6	-50.3	82.8	0.00	0.00	0.00
2,300.0	32.66	199.04	2,254.3	2,402.71	-196.6	-67.9	111.9	0.00	0.00	0.00
2,400.0	32.66	199.04	2,338.5	2,318.53	-247.7	-85.5	140.9	0.00	0.00	0.00
2,500.0	32.66	199.04	2,422.7	2,234.34	-298.7	-103.1	169.9	0.00	0.00	0.00
2,600.0	32.66	199.04	2,506.8	2,150.15	-349.7	-120.7	198.9	0.00	0.00	0.00
2,700.0	32.66	199.04	2,591.0	2,065.97	-400.7	-138.3	228.0	0.00	0.00	0.00
2,800.0	32.66	199.04	2,675.2	1,981.78	-451.7	-155.9	257.0	0.00	0.00	0.00
2,900.0	32.66	199.04	2,759.4	1,897.60	-502.7	-173.5	286.0	0.00	0.00	0.00
3,000.0	32.66	199.04	2,843.6	1,813.41	-553.8	-191.1	315.0	0.00	0.00	0.00
3,100.0	32.66	199.04	2,927.8	1,729.22	-604.8	-208.7	344.1	0.00	0.00	0.00
3,200.0	32.66	199.04	3,012.0	1,645.04	-655.8	-226.3	373.1	0.00	0.00	0.00
3,300.0	32.66	199.04	3,096.1	1,560.85	-706.8	-243.9	402.1	0.00	0.00	0.00
3,400.0	32.66	199.04	3,180.3	1,476.67	-757.8	-261.5	431.1	0.00	0.00	0.00
3,500.0	32.66	199.04	3,264.5	1,392.48	-808.8	-279.1	460.1	0.00	0.00	0.00
3,600.0	32.66	199.04	3,348.7	1,308.29	-859.9	-296.7	489.2	0.00	0.00	0.00
3,700.0	32.66	199.04	3,432.9	1,224.11	-910.9	-314.3	518.2	0.00	0.00	0.00
3,800.0	32.66	199.04	3,517.1	1,139.92	-961.9	-332.0	547.2	0.00	0.00	0.00
PARKMAN										
3,881.9	32.66	199.04	3,586.0	1,071.00	-1,003.7	-346.4	571.0	0.00	0.00	0.00
3,900.0	32.66	199.04	3,601.3	1,055.74	-1,012.9	-349.6	576.2	0.00	0.00	0.00
4,000.0	32.66	199.04	3,685.4	971.55	-1,063.9	-367.2	605.3	0.00	0.00	0.00
4,100.0	32.66	199.04	3,769.6	887.36	-1,114.9	-384.8	634.3	0.00	0.00	0.00
4,200.0	32.66	199.04	3,853.8	803.18	-1,166.0	-402.4	663.3	0.00	0.00	0.00
4,300.0	32.66	199.04	3,938.0	718.99	-1,217.0	-420.0	692.3	0.00	0.00	0.00
4,400.0	32.66	199.04	4,022.2	634.81	-1,268.0	-437.6	721.4	0.00	0.00	0.00
4,500.0	32.66	199.04	4,106.4	550.62	-1,319.0	-455.2	750.4	0.00	0.00	0.00
4,600.0	32.66	199.04	4,190.6	466.43	-1,370.0	-472.8	779.4	0.00	0.00	0.00

Planning Report



Database:	EDM 5000.1 Single User Db	Local Co-ordinate Reference:	Well DT-MARTINEZ C5-5-6
Company:	EXTRACTION OIL & GAS	TVD Reference:	KB-EST @ 4657.0usft (SAV 802)
Project:	WELD COUNTY, COLORADO (NAD 83)	MD Reference:	KB-EST @ 4657.0usft (SAV 802)
Site:	NW NE SEC. 5 T5N R65W 6th P.M.	North Reference:	True
Well:	DT-MARTINEZ C5-5-6	Survey Calculation Method:	Minimum Curvature
Wellbore:	ORIGINAL WELLBORE		
Design:	PROPOSAL #2		

Planned Survey

MD (usft)	Inc (°)	Azi (°)	TVD (usft)	SS (usft)	+N/-S (usft)	+E/-W (usft)	Vertical Section (usft)	Dogleg Rate (°/100usft)	Build Rate (°/100usft)	Turn Rate (°/100usft)
4,700.0	32.66	199.04	4,274.8	382.25	-1,421.0	-490.4	808.4	0.00	0.00	0.00
SUSSEX										
4,718.1	32.66	199.04	4,290.0	367.00	-1,430.3	-493.6	813.7	0.00	0.00	0.00
4,800.0	32.66	199.04	4,358.9	298.06	-1,472.1	-508.0	837.4	0.00	0.00	0.00
4,900.0	32.66	199.04	4,443.1	213.88	-1,523.1	-525.6	866.5	0.00	0.00	0.00
5,000.0	32.66	199.04	4,527.3	129.69	-1,574.1	-543.2	895.5	0.00	0.00	0.00
5,100.0	32.66	199.04	4,611.5	45.50	-1,625.1	-560.8	924.5	0.00	0.00	0.00
5,200.0	32.66	199.04	4,695.7	-38.68	-1,676.1	-578.4	953.5	0.00	0.00	0.00
5,300.0	32.66	199.04	4,779.9	-122.87	-1,727.1	-596.0	982.6	0.00	0.00	0.00
SHANNON										
5,365.5	32.66	199.04	4,835.0	-178.00	-1,760.6	-607.6	1,001.6	0.00	0.00	0.00
5,400.0	32.66	199.04	4,864.1	-207.05	-1,778.2	-613.6	1,011.6	0.00	0.00	0.00
5,500.0	32.66	199.04	4,948.2	-291.24	-1,829.2	-631.3	1,040.6	0.00	0.00	0.00
5,600.0	32.66	199.04	5,032.4	-375.43	-1,880.2	-648.9	1,069.6	0.00	0.00	0.00
5,700.0	32.66	199.04	5,116.6	-459.61	-1,931.2	-666.5	1,098.7	0.00	0.00	0.00
5,800.0	32.66	199.04	5,200.8	-543.80	-1,982.2	-684.1	1,127.7	0.00	0.00	0.00
5,900.0	32.66	199.04	5,285.0	-627.98	-2,033.2	-701.7	1,156.7	0.00	0.00	0.00
6,000.0	32.66	199.04	5,369.2	-712.17	-2,084.3	-719.3	1,185.7	0.00	0.00	0.00
6,100.0	32.66	199.04	5,453.4	-796.36	-2,135.3	-736.9	1,214.7	0.00	0.00	0.00
6,200.0	32.66	199.04	5,537.5	-880.54	-2,186.3	-754.5	1,243.8	0.00	0.00	0.00
6,300.0	32.66	199.04	5,621.7	-964.73	-2,237.3	-772.1	1,272.8	0.00	0.00	0.00
6,400.0	32.66	199.04	5,705.9	-1,048.91	-2,288.3	-789.7	1,301.8	0.00	0.00	0.00
6,500.0	32.66	199.04	5,790.1	-1,133.10	-2,339.3	-807.3	1,330.8	0.00	0.00	0.00
END OF TANGENT										
6,513.7	32.66	199.04	5,801.6	-1,144.63	-2,346.3	-809.7	1,334.8	0.00	0.00	0.00
6,600.0	27.48	199.04	5,876.3	-1,219.29	-2,387.2	-823.8	1,358.1	6.00	-6.00	0.00
6,700.0	21.48	199.04	5,967.3	-1,310.26	-2,426.4	-837.3	1,380.3	6.00	-6.00	0.00
6,800.0	15.48	199.04	6,062.1	-1,405.05	-2,456.3	-847.7	1,397.4	6.00	-6.00	0.00
6,900.0	9.48	199.04	6,159.6	-1,502.65	-2,476.7	-854.7	1,409.0	6.00	-6.00	0.00
7,000.0	3.48	199.04	6,259.0	-1,601.96	-2,487.4	-858.4	1,415.1	6.00	-6.00	0.00
EOD TO VERTICAL										
7,058.1	0.00	0.00	6,317.0	-1,660.02	-2,489.1	-859.0	1,416.0	6.00	-6.00	0.00
7,100.0	0.00	0.00	6,358.9	-1,701.92	-2,489.1	-859.0	1,416.0	0.00	0.00	0.00
7,200.0	0.00	0.00	6,458.9	-1,801.92	-2,489.1	-859.0	1,416.0	0.00	0.00	0.00
KOP (10°/100ft BUR)										
7,208.1	0.00	0.00	6,467.0	-1,810.02	-2,489.1	-859.0	1,416.0	0.00	0.00	0.00
7,300.0	9.19	273.37	6,558.5	-1,901.53	-2,488.7	-866.3	1,423.1	10.00	10.00	0.00
7,400.0	19.19	273.37	6,655.4	-1,998.36	-2,487.2	-890.8	1,446.5	10.00	10.00	0.00
SHARON SPRINGS										
7,459.0	25.09	273.37	6,710.0	-2,053.00	-2,485.9	-913.0	1,467.8	10.00	10.00	0.00
NIOBRARA										
7,492.6	28.45	273.37	6,740.0	-2,083.00	-2,485.0	-928.1	1,482.3	10.00	10.00	0.00
7,500.0	29.19	273.37	6,746.5	-2,089.46	-2,484.8	-931.6	1,485.7	10.00	10.00	0.00
7,600.0	39.19	273.37	6,829.1	-2,172.07	-2,481.5	-987.7	1,539.4	10.00	10.00	0.00
7,700.0	49.19	273.37	6,900.7	-2,243.69	-2,477.4	-1,057.2	1,606.0	10.00	10.00	0.00
7,800.0	59.19	273.37	6,959.1	-2,302.12	-2,472.7	-1,138.0	1,683.5	10.00	10.00	0.00
7,900.0	69.19	273.37	7,002.6	-2,345.61	-2,467.4	-1,227.8	1,769.6	10.00	10.00	0.00
FORT HAYS										
7,906.8	69.87	273.37	7,005.0	-2,348.00	-2,467.0	-1,234.1	1,775.7	10.00	10.00	0.00
8,000.0	79.19	273.37	7,029.8	-2,372.83	-2,461.7	-1,323.7	1,861.5	10.00	10.00	0.00
CODELL										
8,000.9	79.28	273.37	7,030.0	-2,373.00	-2,461.7	-1,324.6	1,862.4	10.00	10.00	0.00
8,100.0	89.19	273.37	7,039.9	-2,382.94	-2,455.9	-1,422.9	1,956.6	10.00	10.00	0.00

Planning Report



Database:	EDM 5000.1 Single User Db	Local Co-ordinate Reference:	Well DT-MARTINEZ C5-5-6
Company:	EXTRACTION OIL & GAS	TVD Reference:	KB-EST @ 4657.0usft (SAV 802)
Project:	WELD COUNTY, COLORADO (NAD 83)	MD Reference:	KB-EST @ 4657.0usft (SAV 802)
Site:	NW NE SEC. 5 T5N R65W 6th P.M.	North Reference:	True
Well:	DT-MARTINEZ C5-5-6	Survey Calculation Method:	Minimum Curvature
Wellbore:	ORIGINAL WELLBORE		
Design:	PROPOSAL #2		

Planned Survey

MD (usft)	Inc (°)	Azi (°)	TVD (usft)	SS (usft)	+N/-S (usft)	+E/-W (usft)	Vertical Section (usft)	Dogleg Rate (°/100usft)	Build Rate (°/100usft)	Turn Rate (°/100usft)
7" ICP - DT-MARTINEZ C5-5-6										
8,108.1	90.00	273.37	7,040.0	-2,383.00	-2,455.4	-1,431.0	1,964.4	10.00	10.00	0.00
8,200.0	90.00	273.37	7,040.0	-2,383.00	-2,450.0	-1,522.7	2,052.3	0.00	0.00	0.00
8,300.0	90.00	273.37	7,040.0	-2,383.00	-2,444.1	-1,622.5	2,148.0	0.00	0.00	0.00
8,400.0	90.00	273.37	7,040.0	-2,383.00	-2,438.3	-1,722.4	2,243.7	0.00	0.00	0.00
8,500.0	90.00	273.37	7,040.0	-2,383.00	-2,432.4	-1,822.2	2,339.4	0.00	0.00	0.00
8,600.0	90.00	273.37	7,040.0	-2,383.01	-2,426.5	-1,922.0	2,435.1	0.00	0.00	0.00
8,700.0	90.00	273.37	7,040.0	-2,383.01	-2,420.6	-2,021.8	2,530.8	0.00	0.00	0.00
8,800.0	90.00	273.37	7,040.0	-2,383.01	-2,414.8	-2,121.7	2,626.5	0.00	0.00	0.00
8,900.0	90.00	273.37	7,040.0	-2,383.01	-2,408.9	-2,221.5	2,722.2	0.00	0.00	0.00
9,000.0	90.00	273.37	7,040.0	-2,383.01	-2,403.0	-2,321.3	2,817.9	0.00	0.00	0.00
9,100.0	90.00	273.37	7,040.0	-2,383.01	-2,397.1	-2,421.1	2,913.6	0.00	0.00	0.00
9,200.0	90.00	273.37	7,040.0	-2,383.01	-2,391.3	-2,521.0	3,009.3	0.00	0.00	0.00
9,300.0	90.00	273.37	7,040.0	-2,383.01	-2,385.4	-2,620.8	3,105.0	0.00	0.00	0.00
9,400.0	90.00	273.37	7,040.0	-2,383.01	-2,379.5	-2,720.6	3,200.7	0.00	0.00	0.00
9,500.0	90.00	273.37	7,040.0	-2,383.01	-2,373.6	-2,820.5	3,296.4	0.00	0.00	0.00
9,600.0	90.00	273.37	7,040.0	-2,383.01	-2,367.7	-2,920.3	3,392.1	0.00	0.00	0.00
9,700.0	90.00	273.37	7,040.0	-2,383.01	-2,361.9	-3,020.1	3,487.8	0.00	0.00	0.00
9,800.0	90.00	273.37	7,040.0	-2,383.01	-2,356.0	-3,119.9	3,583.5	0.00	0.00	0.00
9,900.0	90.00	273.37	7,040.0	-2,383.02	-2,350.1	-3,219.8	3,679.2	0.00	0.00	0.00
10,000.0	90.00	273.37	7,040.0	-2,383.02	-2,344.2	-3,319.6	3,774.9	0.00	0.00	0.00
10,100.0	90.00	273.37	7,040.0	-2,383.02	-2,338.3	-3,419.4	3,870.6	0.00	0.00	0.00
10,200.0	90.00	273.37	7,040.0	-2,383.02	-2,332.4	-3,519.2	3,966.3	0.00	0.00	0.00
10,300.0	90.00	273.37	7,040.0	-2,383.02	-2,326.6	-3,619.1	4,062.0	0.00	0.00	0.00
10,400.0	90.00	273.37	7,040.0	-2,383.02	-2,320.7	-3,718.9	4,157.7	0.00	0.00	0.00
10,500.0	90.00	273.37	7,040.0	-2,383.02	-2,314.8	-3,818.7	4,253.4	0.00	0.00	0.00
10,600.0	90.00	273.37	7,040.0	-2,383.02	-2,308.9	-3,918.5	4,349.1	0.00	0.00	0.00
10,700.0	90.00	273.37	7,040.0	-2,383.02	-2,303.0	-4,018.4	4,444.8	0.00	0.00	0.00
10,800.0	90.00	273.37	7,040.0	-2,383.02	-2,297.1	-4,118.2	4,540.5	0.00	0.00	0.00
10,900.0	90.00	273.37	7,040.0	-2,383.02	-2,291.3	-4,218.0	4,636.2	0.00	0.00	0.00
11,000.0	90.00	273.37	7,040.0	-2,383.02	-2,285.4	-4,317.9	4,731.9	0.00	0.00	0.00
11,100.0	90.00	273.37	7,040.0	-2,383.02	-2,279.5	-4,417.7	4,827.6	0.00	0.00	0.00
11,200.0	90.00	273.37	7,040.0	-2,383.02	-2,273.6	-4,517.5	4,923.3	0.00	0.00	0.00
11,300.0	90.00	273.37	7,040.0	-2,383.02	-2,267.7	-4,617.3	5,019.0	0.00	0.00	0.00
11,400.0	90.00	273.37	7,040.0	-2,383.02	-2,261.8	-4,717.2	5,114.7	0.00	0.00	0.00
11,500.0	90.00	273.38	7,040.0	-2,383.02	-2,255.9	-4,817.0	5,210.4	0.00	0.00	0.00
11,600.0	90.00	273.38	7,040.0	-2,383.02	-2,250.1	-4,916.8	5,306.1	0.00	0.00	0.00
11,700.0	90.00	273.38	7,040.0	-2,383.02	-2,244.2	-5,016.6	5,401.8	0.00	0.00	0.00
11,800.0	90.00	273.38	7,040.0	-2,383.02	-2,238.3	-5,116.5	5,497.5	0.00	0.00	0.00
11,900.0	90.00	273.38	7,040.0	-2,383.02	-2,232.4	-5,216.3	5,593.2	0.00	0.00	0.00
12,000.0	90.00	273.38	7,040.0	-2,383.02	-2,226.5	-5,316.1	5,688.9	0.00	0.00	0.00
12,100.0	90.00	273.38	7,040.0	-2,383.02	-2,220.6	-5,415.9	5,784.6	0.00	0.00	0.00
12,200.0	90.00	273.38	7,040.0	-2,383.02	-2,214.7	-5,515.8	5,880.3	0.00	0.00	0.00
12,300.0	90.00	273.38	7,040.0	-2,383.02	-2,208.8	-5,615.6	5,976.0	0.00	0.00	0.00
12,400.0	90.00	273.38	7,040.0	-2,383.02	-2,202.9	-5,715.4	6,071.7	0.00	0.00	0.00
12,500.0	90.00	273.38	7,040.0	-2,383.02	-2,197.1	-5,815.3	6,167.4	0.00	0.00	0.00
12,600.0	90.00	273.38	7,040.0	-2,383.02	-2,191.2	-5,915.1	6,263.1	0.00	0.00	0.00
12,700.0	90.00	273.38	7,040.0	-2,383.02	-2,185.3	-6,014.9	6,358.8	0.00	0.00	0.00
12,800.0	90.00	273.38	7,040.0	-2,383.02	-2,179.4	-6,114.7	6,454.5	0.00	0.00	0.00
12,900.0	90.00	273.38	7,040.0	-2,383.02	-2,173.5	-6,214.6	6,550.2	0.00	0.00	0.00
13,000.0	90.00	273.38	7,040.0	-2,383.02	-2,167.6	-6,314.4	6,645.8	0.00	0.00	0.00
13,100.0	90.00	273.38	7,040.0	-2,383.02	-2,161.7	-6,414.2	6,741.5	0.00	0.00	0.00
13,200.0	90.00	273.38	7,040.0	-2,383.02	-2,155.8	-6,514.0	6,837.2	0.00	0.00	0.00

Planning Report



Database:	EDM 5000.1 Single User Db	Local Co-ordinate Reference:	Well DT-MARTINEZ C5-5-6
Company:	EXTRACTION OIL & GAS	TVD Reference:	KB-EST @ 4657.0usft (SAV 802)
Project:	WELD COUNTY, COLORADO (NAD 83)	MD Reference:	KB-EST @ 4657.0usft (SAV 802)
Site:	NW NE SEC. 5 T5N R65W 6th P.M.	North Reference:	True
Well:	DT-MARTINEZ C5-5-6	Survey Calculation Method:	Minimum Curvature
Wellbore:	ORIGINAL WELLBORE		
Design:	PROPOSAL #2		

Planned Survey										
MD (usft)	Inc (°)	Azi (°)	TVD (usft)	SS (usft)	+N/-S (usft)	+E/-W (usft)	Vertical Section (usft)	Dogleg Rate (°/100usft)	Build Rate (°/100usft)	Turn Rate (°/100usft)
13,300.0	90.00	273.38	7,040.0	-2,383.02	-2,149.9	-6,613.9	6,932.9	0.00	0.00	0.00
13,400.0	90.00	273.38	7,040.0	-2,383.02	-2,144.0	-6,713.7	7,028.6	0.00	0.00	0.00
13,500.0	90.00	273.38	7,040.0	-2,383.01	-2,138.1	-6,813.5	7,124.3	0.00	0.00	0.00
13,600.0	90.00	273.38	7,040.0	-2,383.01	-2,132.2	-6,913.3	7,220.0	0.00	0.00	0.00
13,700.0	90.00	273.38	7,040.0	-2,383.01	-2,126.3	-7,013.2	7,315.7	0.00	0.00	0.00
13,800.0	90.00	273.38	7,040.0	-2,383.01	-2,120.4	-7,113.0	7,411.4	0.00	0.00	0.00
13,900.0	90.00	273.38	7,040.0	-2,383.01	-2,114.5	-7,212.8	7,507.1	0.00	0.00	0.00
14,000.0	90.00	273.38	7,040.0	-2,383.01	-2,108.6	-7,312.6	7,602.8	0.00	0.00	0.00
14,100.0	90.00	273.38	7,040.0	-2,383.01	-2,102.8	-7,412.5	7,698.5	0.00	0.00	0.00
14,200.0	90.00	273.38	7,040.0	-2,383.01	-2,096.9	-7,512.3	7,794.2	0.00	0.00	0.00
14,300.0	90.00	273.38	7,040.0	-2,383.01	-2,091.0	-7,612.1	7,889.9	0.00	0.00	0.00
14,400.0	90.00	273.38	7,040.0	-2,383.01	-2,085.1	-7,711.9	7,985.6	0.00	0.00	0.00
14,500.0	90.00	273.38	7,040.0	-2,383.01	-2,079.2	-7,811.8	8,081.3	0.00	0.00	0.00
14,600.0	90.00	273.38	7,040.0	-2,383.01	-2,073.3	-7,911.6	8,177.0	0.00	0.00	0.00
14,700.0	90.00	273.38	7,040.0	-2,383.01	-2,067.4	-8,011.4	8,272.7	0.00	0.00	0.00
14,800.0	90.00	273.38	7,040.0	-2,383.00	-2,061.5	-8,111.3	8,368.4	0.00	0.00	0.00
14,900.0	90.00	273.38	7,040.0	-2,383.00	-2,055.6	-8,211.1	8,464.1	0.00	0.00	0.00
15,000.0	90.00	273.38	7,040.0	-2,383.00	-2,049.7	-8,310.9	8,559.8	0.00	0.00	0.00
15,100.0	90.00	273.38	7,040.0	-2,383.00	-2,043.8	-8,410.7	8,655.4	0.00	0.00	0.00
BHL - DT-MARTINEZ C5-5-6										
15,186.2	90.00	273.38	7,040.0	-2,383.00	-2,038.7	-8,496.7	8,737.9	0.00	0.00	0.00

Formations						
MD (usft)	TVD (usft)	Name	Lithology	Dip (°)	Dip Direction (°)	
3,881.9	3,586.0	PARKMAN				
4,718.1	4,290.0	SUSSEX				
5,365.5	4,835.0	SHANNON				
7,459.0	6,710.0	SHARON SPRINGS				
7,492.6	6,740.0	NIOBRARA				
7,906.8	7,005.0	FORT HAYS				
8,000.9	7,030.0	CODELL				

Plan Annotations				
MD (usft)	TVD (usft)	Local Coordinates		Comment
		+N/-S (usft)	+E/-W (usft)	
1,650.0	1,650.0	0.0	0.0	START NUDGE (6°/100ft BUR)
2,194.4	2,165.4	-142.8	-49.3	EOB TO 32.66° INC
6,513.7	5,801.6	-2,346.3	-809.7	END OF TANGENT
7,058.1	6,317.0	-2,489.1	-859.0	EOD TO VERTICAL
7,208.1	6,467.0	-2,489.1	-859.0	KOP (10°/100ft BUR)
8,108.1	7,040.0	-2,455.4	-1,431.0	7" ICP - DT-MARTINEZ C5-5-6
15,186.2	7,040.0	-2,038.7	-8,496.7	BHL - DT-MARTINEZ C5-5-6