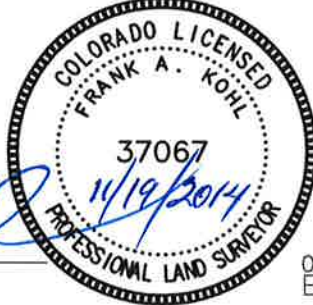


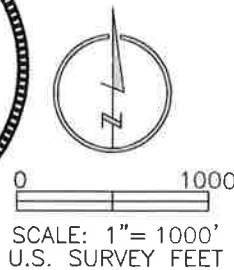
#### LAND SURVEYOR'S CERTIFICATION

LAMP, RYNEARSON & ASSOCIATES, INC., OF FT. COLLINS, COLORADO HAS, IN ACCORDANCE WITH A REQUEST FROM DUSTIN DYK FOR EXTRACTION OIL AND GAS, DETERMINED THE SURFACE LOCATION OF THE WELL DESIGNATED AS DT-MARTINEZ 3-5-6 TO BE 462' FROM THE NORTH LINE AND 1684' FROM THE EAST LINE OF SECTION 5, TOWNSHIP 5 NORTH, RANGE 65 WEST OF THE 6TH P.M., WELD COUNTY, COLORADO.



FRANK A. KOHL  
 COLORADO PLS 37067

DATE OF SURVEY: 8/19/2010 (SECTION CONTROL)  
 DATE OF SURVEY: 10/13/2014 (WELL LOCATION)



#### NOTES:

- DISTANCES ARE MEASURED PERPENDICULAR TO NEAREST SECTION LINE AND ARE SHOWN ON THE SAME SIDE OF THE SECTION LINE WHERE THE WELL IS LOCATED.
- THIS MAP DOES NOT REPRESENT A MONUMENTED BOUNDARY SURVEY. SIXTEENTH CORNER LOCATIONS ARE COMPUTED, UNLESS OTHERWISE NOTED.
- BOTTOM HOLE LOCATIONS AND HORIZONTAL COMPLETION ZONE PROVIDED BY OTHERS.

#### BASIS OF BEARING:

THE NORTH LINE OF THE NORTHEAST QUARTER OF SECTION 5-T5N-R65W BEARS S85°52'57"E BETWEEN THE NORTH QUARTER CORNER OF SECTION 5 MONUMENTED WITH 3 1/4" A.C. IN R.B. STAMPED "PLS 28259" AND THE NORTHEAST CORNER OF SECTION 5 MONUMENTED WITH A 2 1/2" A.C. IN R.B. STAMPED "LS 17500" BASED ON THE COLORADO NORTH 0501 STATE PLANE COORDINATE SYSTEM.

ELEVATIONS ARE BASED ON NAVD 88, AS OBSERVED FROM GPS OBSERVATIONS

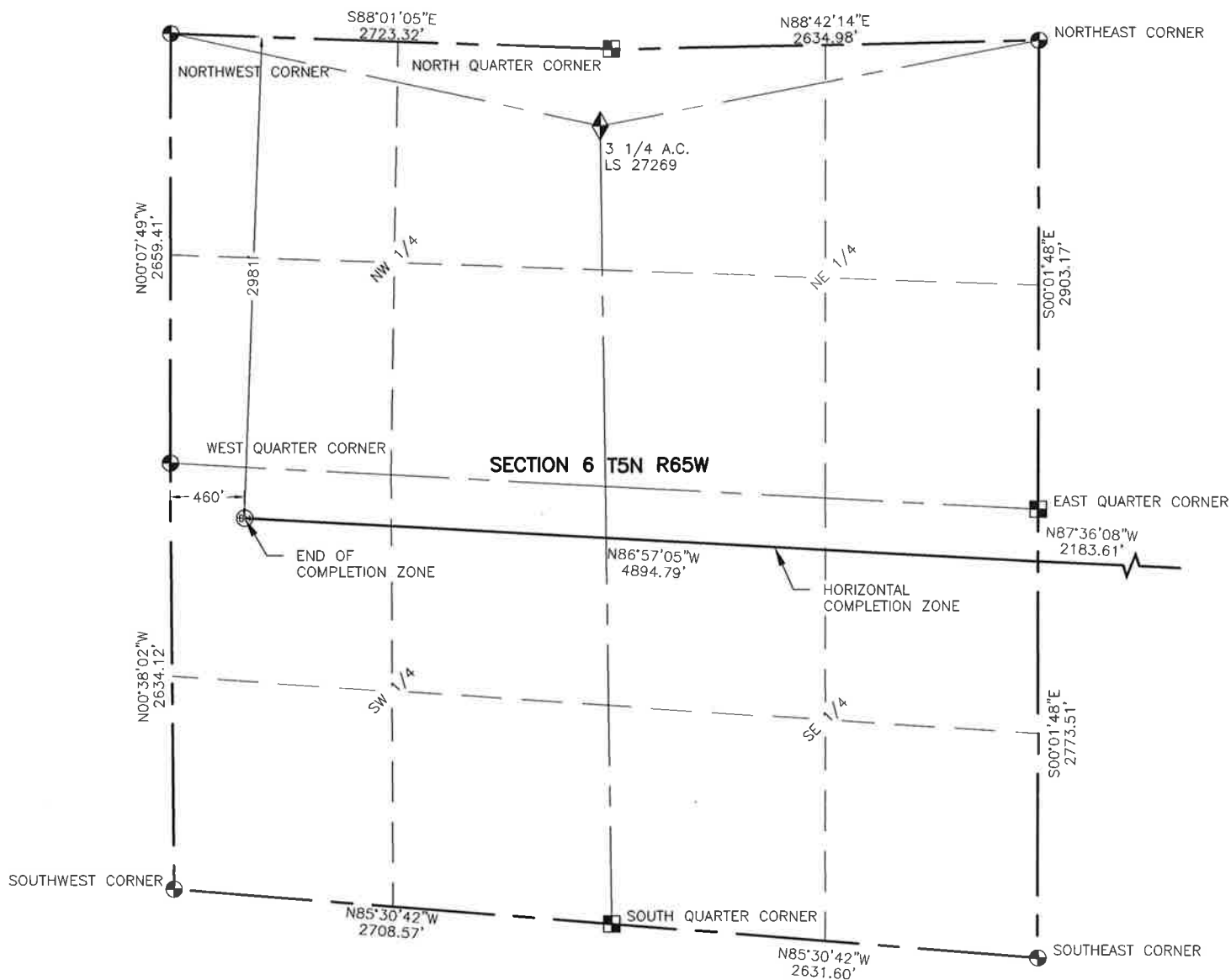


**LAMP RYNEARSON  
 & ASSOCIATES**

4715 Innovation Drive 970.226.0342 | P  
 Fort Collins, CO 80525 970.226.0879 | F  
 www.LRA-inc.com

Proposed Well Location Exhibit  
 DT-Martinez 3-5-6  
 1 of 2

drawn by	date	cogcc id	project - task number	book and page	surface - location
NDB	11/19/14	432599	0211012.02-502	MRI02, 1	NW/4 NE/4 SEC 5 T5N R65W
path\filename P:\Engineering\0211012.02\DRAWINGS\EXHIBITS\0211012-02EXWPM.dwg					



#### NOTES:

1. DISTANCES ARE MEASURED PERPENDICULAR TO NEAREST SECTION LINE AND ARE SHOWN ON THE SAME SIDE OF THE SECTION LINE WHERE THE WELL IS LOCATED.
2. THIS MAP DOES NOT REPRESENT A MONUMENTED BOUNDARY SURVEY. SIXTEENTH CORNER LOCATIONS ARE COMPUTED, UNLESS OTHERWISE NOTED.
3. BOTTOM HOLE LOCATIONS AND HORIZONTAL COMPLETION ZONE PROVIDED BY OTHERS.

#### LEGEND

- ALIQUOT CORNER
- BOTTOM HOLE
- COMPUTED FROM GLO RECORDS
- A.C. ALUMINUM CAP
- R.B. RANGE BOX
- UNION COLONY CORNER



0 1000

SCALE: 1" = 1000'  
U.S. SURVEY FEET



**LAMP RYNEARSON  
& ASSOCIATES**

4715 Innovation Drive 970.226.0342 | P  
Fort Collins, CO 80525 970.226.0879 | F  
www.LRA-Inc.com

Proposed Well Location Exhibit  
DT-Martinez 3-5-6  
2 of 2

drawn by  
NDB

date  
11/19/14

cogcc id  
432599

project - task number  
0211012.02-502

book and page  
MRI02, 1

path\filename P:\Engineering\0211012.02\DRAWINGS\EXHIBITS\0211012-02EXWPM.dwg

surface - location  
NW/4 NE/4 SEC 5 T5N R65W