

Lease Map prepared for Extraction Oil and Gas, LLC

Prepared by Mineral Resources, Inc.

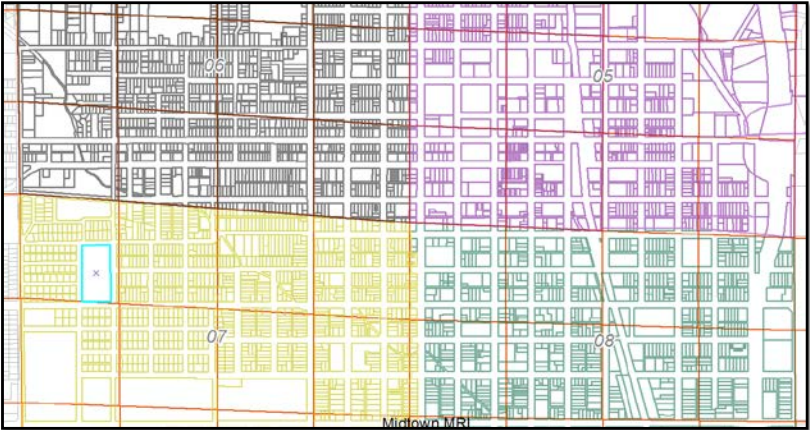
Wells: DT-Luther 1-5-6

Legal Description: The S/2SW/4 and the S/2SE/4 of Section 6, Township 5 North, Range 65 West; the S/2SW/4 and the S/2SE/4 of Section 5, Township 5 North, Range 65 West; the N/2NW/4 and the N/2NE/4 of Section 8, Township 5 North Range 65 West; and the N/2NW/4 and the N/2NE/4, Section 7, Township 5 North, Range 65 West, of the 6th P.M.

Unit Size: 640 acres

Selected Lease:

Lessor: Weld County School District 6  
Lessee: Mineral Resources, Inc.  
Reception No: 3814185  
Reception Date: 12/27/2011  
Lease Date: 12/13/2011  
Net Acres: 7.47



Selected Lease: \_\_\_\_\_