

WELL LOCATION DATA:

LATITUDE: 40.43492°N
 LONGITUDE: 104.68374°W
 ELEVATION: 4640'
 PDOP: 1.7
 OPERATOR: C. HOLMES
 SURFACE USE: INDUSTRIAL
 PROPOSED GROUND ELEVATION: 4639.5'

NEAREST CULTURAL ITEMS:

BUILDING: 541'
 BUILDING UNIT: 703'
 HIGH OCCUPANCY BUILDING UNIT: 5280'
 DESIGNATED OUTSIDE ACTIVITY AREA: 5280'+
 PUBLIC ROAD: 915'
 ABOVE GROUND UTILITY: 906'
 RAILROAD: 1515'
 PROPERTY LINE: 315'

REVISIONS	DATE
FIRST SUBMITTAL	9/5/14
SECOND SUBMITTAL	10/14/14
THIRD SUBMITTAL	11/19/14

LEGEND

COMPUTED FROM GLO RECORDS
 ALIQUOT CORNER
 A.C. ALUMINUM CAP
 B.H. BOTTOM HOLE
 R.B. RANGE BOX
 PROPOSED WELL

LAND SURVEYOR'S CERTIFICATION

LAMP, RYNEARSON & ASSOCIATES, INC., OF FT. COLLINS, COLORADO HAS, IN ACCORDANCE WITH A REQUEST FROM DUSTIN DYK FOR EXTRACTION OIL AND GAS, DETERMINED THE SURFACE LOCATION OF THE WELL DESIGNATED AS DT-FORBES C8-5-6 TO BE 574' FROM THE NORTH LINE AND 1683' FROM THE EAST LINE OF SECTION 5, TOWNSHIP 5 NORTH, RANGE 65 WEST OF THE 6TH P.M., WELD COUNTY, COLORADO.



FRANK A. KOHL
 COLORADO PLS 37067

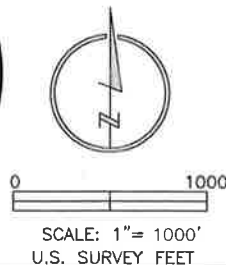
DATE OF SURVEY: 8/19/2010 (SECTION CONTROL)
 DATE OF SURVEY: 10/13/2014 (WELL LOCATION)

NOTES:

- DISTANCES ARE MEASURED PERPENDICULAR TO NEAREST SECTION LINE AND ARE SHOWN ON THE SAME SIDE OF THE SECTION LINE WHERE THE WELL IS LOCATED.
- THIS MAP DOES NOT REPRESENT A MONUMENTED BOUNDARY SURVEY. SIXTEENTH CORNER LOCATIONS ARE COMPUTED, UNLESS OTHERWISE NOTED.
- BOTTOM HOLE LOCATIONS AND HORIZONTAL COMPLETION ZONE PROVIDED BY OTHERS.

BASIS OF BEARING:

THE NORTH LINE OF THE NORTHEAST QUARTER OF SECTION 5-T5N-R65W BEARS S85°52'57"E BETWEEN THE NORTH QUARTER CORNER OF SECTION 5 MONUMENTED WITH 3 1/4" A.C. IN R.B. STAMPED "PLS 28259" AND THE NORTHEAST CORNER OF SECTION 5 MONUMENTED WITH A 2 1/2" A.C. IN R.B. STAMPED "LS 17500" BASED ON THE COLORADO NORTH 0501 STATE PLANE COORDINATE SYSTEM.



ELEVATIONS ARE BASED ON NAVD 88, AS OBSERVED FROM GPS OBSERVATIONS

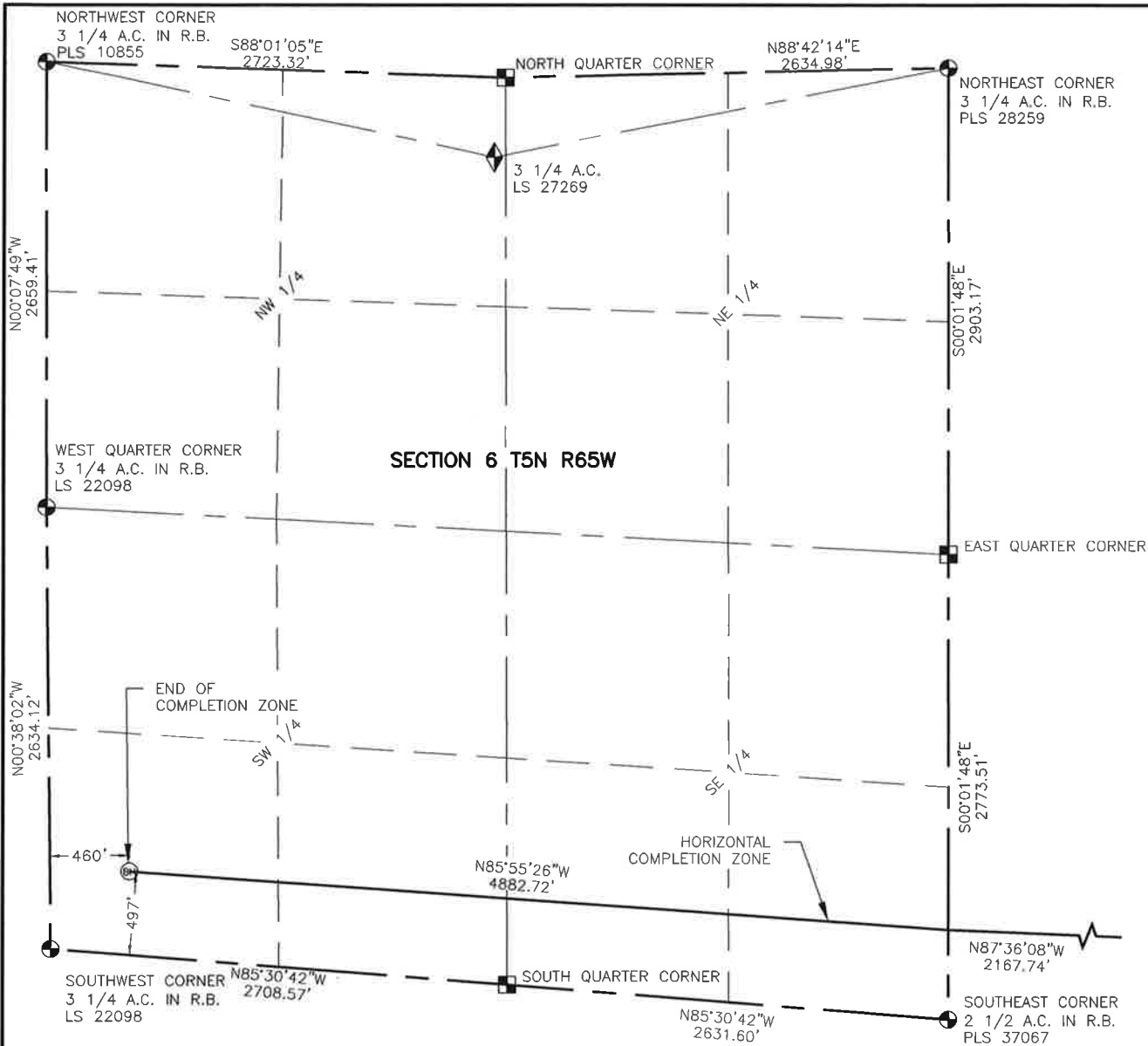


**LAMP RYNEARSON
 & ASSOCIATES**

4715 Innovation Drive 970.226.0342 | P
 Fort Collins, CO 80525 970.226.0879 | F
 www.LRA-Inc.com

Proposed Well Location Exhibit
 DT-Forbes C8-5-6
 1 OF 2

drawn by NDB	date 8/28/14	cogcc id 432599	project - task number 0211012.02-502	book and page MRI02, 1	surface - location NW/4 NE/4 SEC 5 T5N R65W
path\filename P:_Engineering\0211012.02\DRAWINGS\EXHIBITS\0211012-02EXWPEC7.dwg					



NOTES:

1. DISTANCES ARE MEASURED PERPENDICULAR TO NEAREST SECTION LINE AND ARE SHOWN ON THE SAME SIDE OF THE SECTION LINE WHERE THE WELL IS LOCATED.
2. THIS MAP DOES NOT REPRESENT A MONUMENTED BOUNDARY SURVEY. SIXTEENTH CORNER LOCATIONS ARE COMPUTED, UNLESS OTHERWISE NOTED.
3. BOTTOM HOLE LOCATIONS AND HORIZONTAL COMPLETION ZONE PROVIDED BY OTHERS.

LEGEND

- ALIQUOT CORNER
- ⊙ BOTTOM HOLE
- COMPUTED FROM GLO RECORDS
- A.C. ALUMINUM CAP
- R.B. RANGE BOX
- ◆ UNION COLONY CORNER



0 1000

SCALE: 1"= 1000'
U.S. SURVEY FEET



**LAMP RYNEARSON
& ASSOCIATES**

4715 Innovation Drive 970.226.0342 | P
Fort Collins, CO 80525 970.226.0879 | F
www.LRA-Inc.com

Proposed Well Location Exhibit
DT-Forbes C8-5-6
2 OF 2

drawn by

NDB

date

8/28/14

cogcc id

432599

project - task number

0211012.02-502

book and page

MRI02, 1

surface - location

NW/4 NE/4 SEC 5 T5N R65W

path/filename P:_Engineering\0211012.02\DRAWINGS\EXHIBITS\0211012-02EXWPEC7A.dwg