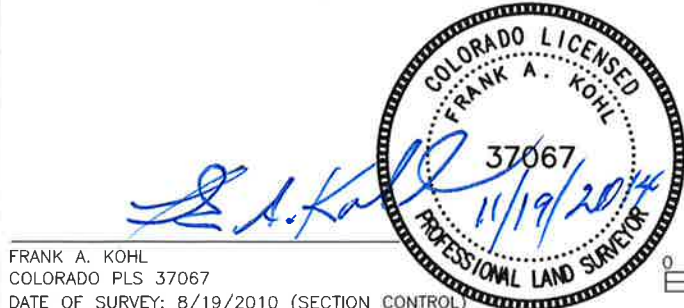


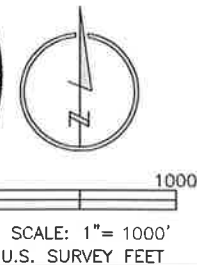
### LAND SURVEYOR'S CERTIFICATION

LAMP, RYNEARSON & ASSOCIATES, INC., OF FT. COLLINS, COLORADO HAS, IN ACCORDANCE WITH A REQUEST FROM DUSTIN DYK FOR EXTRACTION OIL AND GAS, DETERMINED THE SURFACE LOCATION OF THE WELL DESIGNATED AS DT-FORBES C7-5-6 TO BE 542' FROM THE NORTH LINE AND 1684' FROM THE EAST LINE OF SECTION 5, TOWNSHIP 5 NORTH, RANGE 65 WEST OF THE 6TH P.M., WELD COUNTY, COLORADO.



FRANK A. KOHL  
 COLORADO PLS 37067

DATE OF SURVEY: 8/19/2010 (SECTION CONTROL)  
 DATE OF SURVEY: 10/13/2014 (WELL LOCATION)

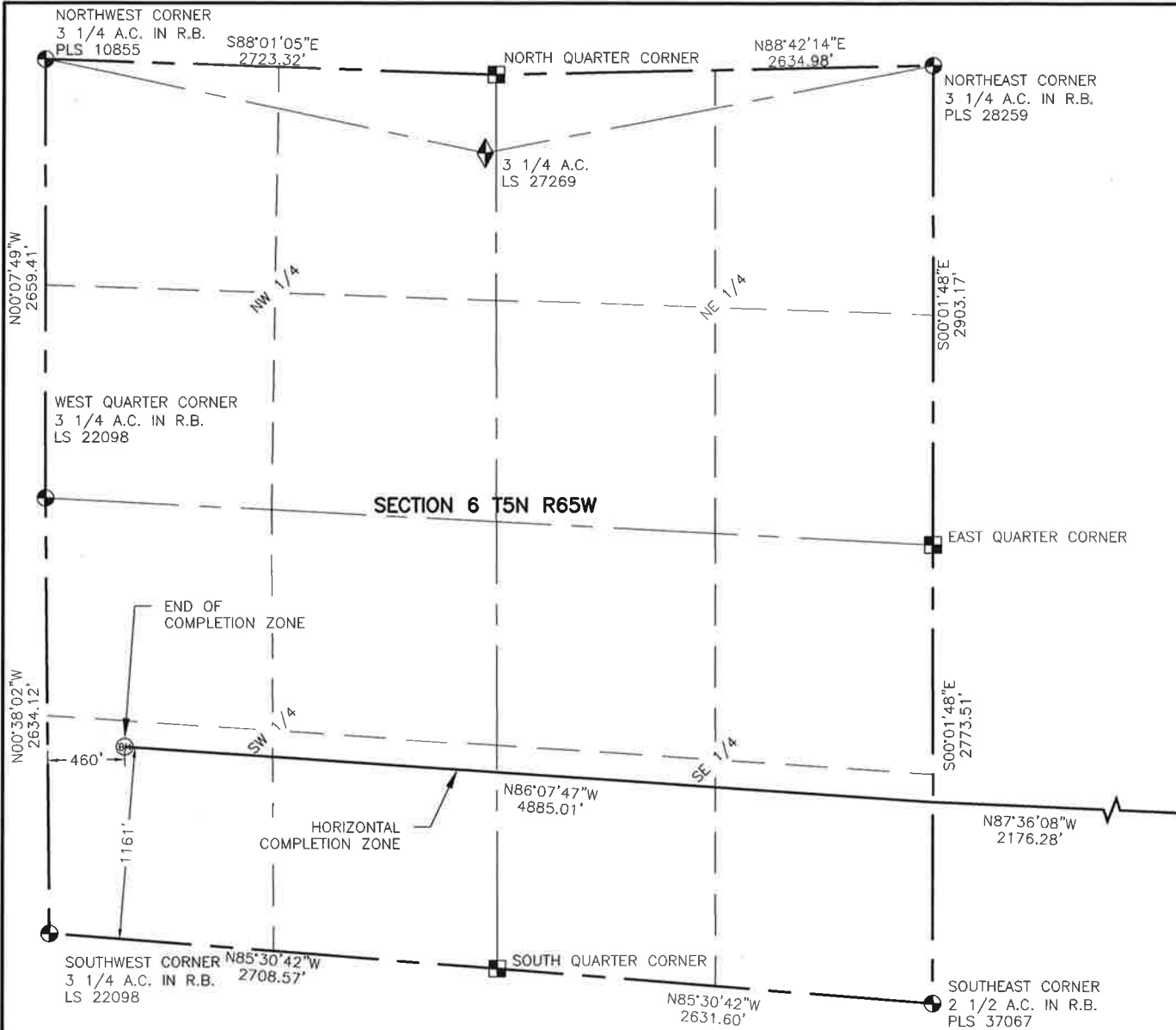


**LAMP RYNEARSON  
 & ASSOCIATES**

4715 Innovation Drive 970.226.0342 | P  
 Fort Collins, CO 80525 970.226.0879 | F  
 www.LRA-Inc.com

Proposed Well Location Exhibit  
 DT-Forbes C7-5-6  
 1 OF 2

drawn by	date	cogcc id	project - task number	book and page	surface - location
NDB	8/28/14	432599	0211012.02-502	MRI02, 1	NW/4 NE/4 SEC 5 T5N R65W
path\filename P:\_Engineering\0211012.02\DRAWINGS\EXHIBITS\0211012-02EXWPEC6.dwg					

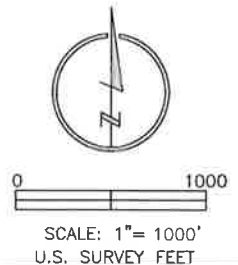


#### NOTES:

1. DISTANCES ARE MEASURED PERPENDICULAR TO NEAREST SECTION LINE AND ARE SHOWN ON THE SAME SIDE OF THE SECTION LINE WHERE THE WELL IS LOCATED.
2. THIS MAP DOES NOT REPRESENT A MONUMENTED BOUNDARY SURVEY. SIXTEENTH CORNER LOCATIONS ARE COMPUTED, UNLESS OTHERWISE NOTED.
3. BOTTOM HOLE LOCATIONS AND HORIZONTAL COMPLETION ZONE PROVIDED BY OTHERS.

#### LEGEND

- ALIQUOT CORNER
- BOTTOM HOLE
- COMPUTED FROM GLO RECORDS
- A.C. ALUMINUM CAP
- R.B. RANGE BOX
- UNION COLONY CORNER



**LAMP RYNEARSON  
& ASSOCIATES**

4715 Innovation Drive 970.226.0342 | P  
Fort Collins, CO 80525 970.226.0879 | F  
www.LRA-Inc.com

Proposed Well Location Exhibit  
DT-Forbes C7-5-6  
2 OF 2

drawn by

NDB

date

8/28/14

cogcc id

432599

project - task number

0211012.02-502

book and page

MRI02, 1

surface - location

NW/4 NE/4 SEC 5 T5N R65W

path/filename P:\\_Engineering\0211012.02\DRAWINGS\EXHIBITS\0211012-02EXWPEC6A.dwg