

EXTRACTION OIL & GAS

WELD COUNTY, COLORADO (NAD 83)

NW NE SEC. 5 T5N R65W 6th P.M.

DT-FORBES C7-5-6

ORIGINAL WELLBORE

17 November, 2014

Plan: PROPOSAL #2

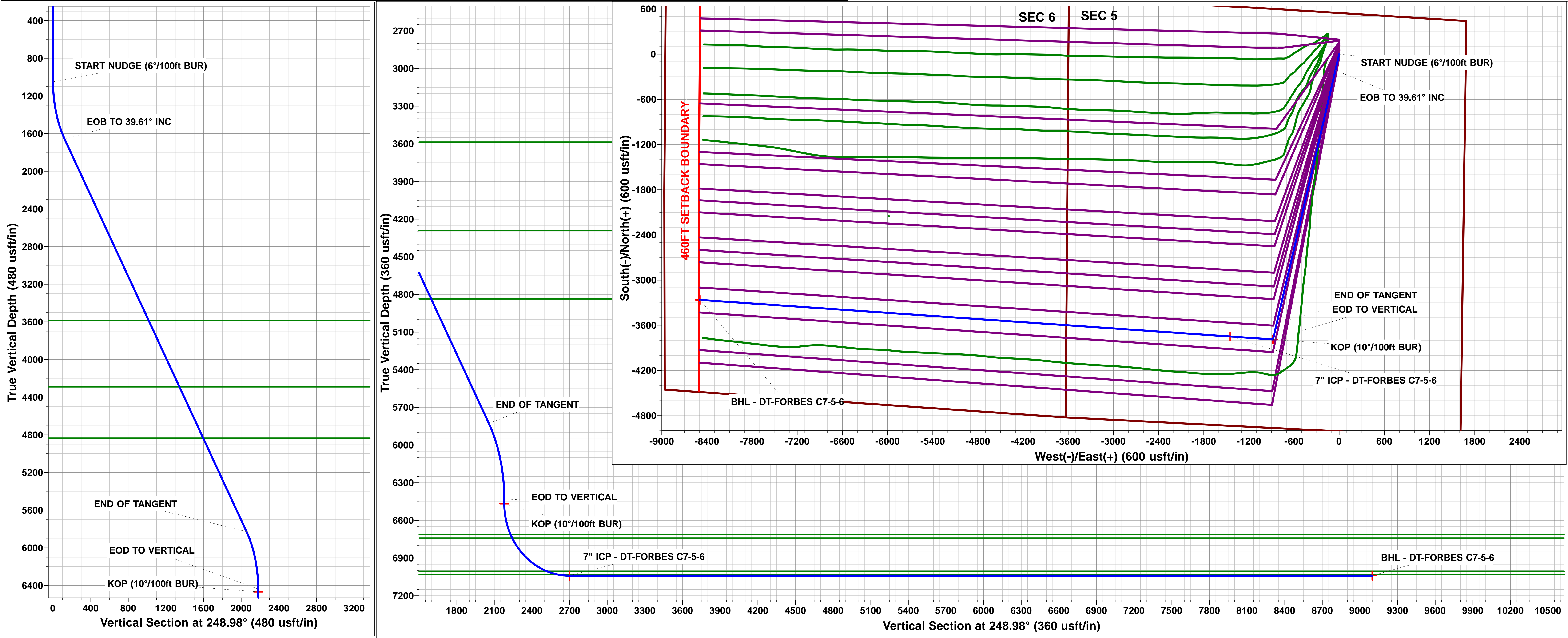
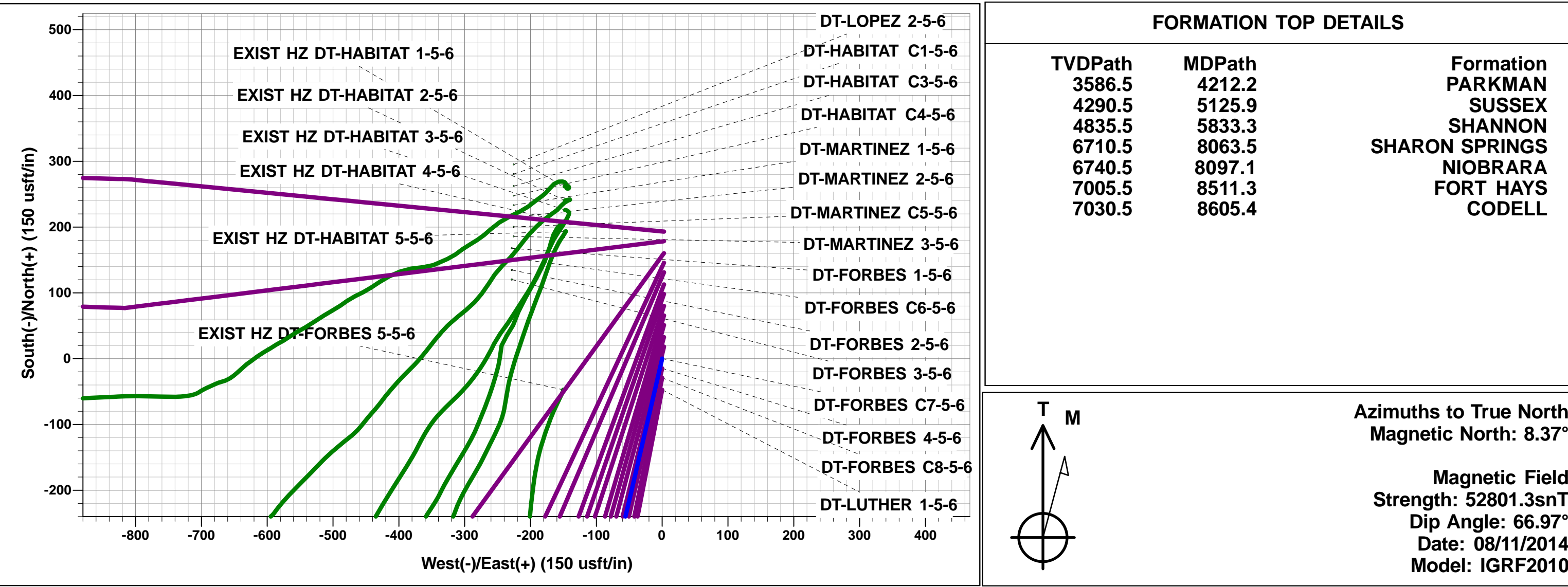




Project: WELD COUNTY, COLORADO (NAD 83)
Site: NW NE SEC. 5 T5N R65W 6th P.M.
Well: DT-FORBES C7-5-6
Wellbore: ORIGINAL WELLBORE
Design: PROPOSAL #2

ANNOTATIONS										
TVD	MD	Inc	Azi	+N/-S	+E/-W	VSect	Dep	Annotation		
1050.0	1050.0	0.00	0.00	0.0	0.0	0.0	0.0	START NUDDGE (6°/100ft BUR)		
1658.8	1710.1	39.61	193.06	-213.5	-49.5	122.8	219.2	EOB TO 39.61° INC		
5828.8	7122.6	39.61	193.06	-3574.7	-829.5	2056.4	3669.7	END OF TANGENT		
6437.6	7782.7	0.00	0.00	-3788.2	-879.0	2179.2	3888.9	EOD TO VERTICAL		
6467.6	7812.7	0.00	0.00	-3788.2	-879.0	2179.2	3888.9	KOP (10°/100ft BUR)		
7040.5	8712.6	90.00	273.95	-3748.7	-1450.5	2698.6	4461.8	7" ICP - DT-FORBES C7-5-6		
7040.5	15770.4	90.00	273.94	-3262.8	-8491.6	9096.9	11519.6	BHL - DT-FORBES C7-5-6		

WELLBORE TARGET DETAILS (LAT/LONG)					
Name	TVD	+N/-S	+E/-W	Latitude	Longitude
KOP - DT-FORBES C7-5-6	6467.6	-3788.2	-879.0	40.424602	-104.686897
7" ICP - DT-FORBES C7-5-6	7040.5	-3748.7	-1450.6	40.424710	-104.688950
BHL - DT-FORBES C7-5-6	7040.5	-3262.8	-8491.6	40.426040	-104.714240



Planning Report



Database:	EDM 5000.1 Single User Db	Local Co-ordinate Reference:	Well DT-FORBES C7-5-6
Company:	EXTRACTION OIL & GAS	TVD Reference:	KB-EST @ 4656.5usft (SAV 802)
Project:	WELD COUNTY, COLORADO (NAD 83)	MD Reference:	KB-EST @ 4656.5usft (SAV 802)
Site:	NW NE SEC. 5 T5N R65W 6th P.M.	North Reference:	True
Well:	DT-FORBES C7-5-6	Survey Calculation Method:	Minimum Curvature
Wellbore:	ORIGINAL WELLBORE		
Design:	PROPOSAL #2		

Project	WELD COUNTY, COLORADO (NAD 83)		
Map System:	US State Plane 1983	System Datum:	Mean Sea Level
Geo Datum:	North American Datum 1983		
Map Zone:	Colorado Northern Zone		Using geodetic scale factor

Site		NW NE SEC. 5 T5N R65W 6th P.M.			
Site Position:		Northing:	1,402,409.16 usft	Latitude:	40.435150
From:	Lat/Long	Easting:	3,226,987.53 usft	Longitude:	-104.684560
Position Uncertainty:	0.0 usft	Slot Radius:	1.10000 ft	Grid Convergence:	0.53 °

Well	DT-FORBES C7-5-6					
Well Position	+N-S	-54.7 usft	Northing:	1,402,356.60 usft	Latitude:	40.435000
	+E-W	228.3 usft	Easting:	3,227,216.29 usft	Longitude:	-104.683740
Position Uncertainty		0.0 usft	Wellhead Elevation:	usft	Ground Level:	4,641.5 usft

Wellbore	ORIGINAL WELLBORE				
Magnetics	Model Name	Sample Date	Declination (°)	Dip Angle (°)	Field Strength (nT)
	IGRF2010	08/11/2014	8.37	66.97	52,801

Design	PROPOSAL #2			
Audit Notes:				
Version:	Phase:	PROTOTYPE	Tie On Depth:	0.0
Vertical Section:	Depth From (TVD) (usft)	+N-S (usft)	+E-W (usft)	Direction (°)
	0.0	0.0	0.0	248.98

Plan Sections											
MD (usft)	Inc (°)	Azi (°)	Vertical Depth	SS (usft)	+N-S (usft)	+E-W (usft)	Dogleg Rate (°/100usf)	Build Rate (°/100usf)	Turn Rate (°/100usf)	TFO (°)	Target
0.0	0.00	0.00	0.0	-4,656.5	0.0	0.0	0.00	0.00	0.00	0.00	
1,050.0	0.00	0.00	1,050.0	-3,606.5	0.0	0.0	0.00	0.00	0.00	0.00	
1,710.1	39.61	193.06	1,658.8	-2,997.7	-213.5	-49.5	6.00	6.00	0.00	193.06	
7,122.6	39.61	193.06	5,828.8	1,172.3	-3,574.7	-829.5	0.00	0.00	0.00	0.00	
7,782.7	0.00	0.00	6,437.6	1,781.1	-3,788.2	-879.0	6.00	-6.00	0.00	180.00	
7,812.7	0.00	0.00	6,467.6	1,811.1	-3,788.2	-879.0	0.00	0.00	0.00	0.00	KOP - DT-FORBES
8,712.6	90.00	273.95	7,040.5	2,384.0	-3,748.7	-1,450.6	10.00	10.00	-9.56	273.95	7" ICP - DT-FORBE
15,770.4	90.00	273.94	7,040.5	2,384.0	-3,262.8	-8,491.6	0.00	0.00	0.00	-111.62	BHL - DT-FORBES

Planning Report



Database:	EDM 5000.1 Single User Db	Local Co-ordinate Reference:	Well DT-FORBES C7-5-6
Company:	EXTRACTION OIL & GAS	TVD Reference:	KB-EST @ 4656.5usft (SAV 802)
Project:	WELD COUNTY, COLORADO (NAD 83)	MD Reference:	KB-EST @ 4656.5usft (SAV 802)
Site:	NW NE SEC. 5 T5N R65W 6th P.M.	North Reference:	True
Well:	DT-FORBES C7-5-6	Survey Calculation Method:	Minimum Curvature
Wellbore:	ORIGINAL WELLBORE		
Design:	PROPOSAL #2		

Planned Survey

MD (usft)	Inc (°)	Azi (°)	TVD (usft)	SS (usft)	+N/-S (usft)	+E/-W (usft)	Vertical Section (usft)	Dogleg Rate (°/100usft)	Build Rate (°/100usft)	Turn Rate (°/100usft)
0.0	0.00	0.00	0.0	4,656.50	0.0	0.0	0.0	0.00	0.00	0.00
100.0	0.00	0.00	100.0	4,556.50	0.0	0.0	0.0	0.00	0.00	0.00
200.0	0.00	0.00	200.0	4,456.50	0.0	0.0	0.0	0.00	0.00	0.00
300.0	0.00	0.00	300.0	4,356.50	0.0	0.0	0.0	0.00	0.00	0.00
400.0	0.00	0.00	400.0	4,256.50	0.0	0.0	0.0	0.00	0.00	0.00
500.0	0.00	0.00	500.0	4,156.50	0.0	0.0	0.0	0.00	0.00	0.00
600.0	0.00	0.00	600.0	4,056.50	0.0	0.0	0.0	0.00	0.00	0.00
700.0	0.00	0.00	700.0	3,956.50	0.0	0.0	0.0	0.00	0.00	0.00
800.0	0.00	0.00	800.0	3,856.50	0.0	0.0	0.0	0.00	0.00	0.00
900.0	0.00	0.00	900.0	3,756.50	0.0	0.0	0.0	0.00	0.00	0.00
1,000.0	0.00	0.00	1,000.0	3,656.50	0.0	0.0	0.0	0.00	0.00	0.00
START NUDGE (6°/100ft BUR)										
1,050.0	0.00	0.00	1,050.0	3,606.50	0.0	0.0	0.0	0.00	0.00	0.00
1,100.0	3.00	193.06	1,100.0	3,556.52	-1.3	-0.3	0.7	6.00	6.00	0.00
1,200.0	9.00	193.06	1,199.4	3,457.12	-11.5	-2.7	6.6	6.00	6.00	0.00
1,300.0	15.00	193.06	1,297.2	3,359.35	-31.7	-7.4	18.2	6.00	6.00	0.00
1,400.0	21.00	193.06	1,392.2	3,264.28	-61.8	-14.3	35.5	6.00	6.00	0.00
1,500.0	27.00	193.06	1,483.5	3,172.97	-101.4	-23.5	58.3	6.00	6.00	0.00
1,600.0	33.00	193.06	1,570.1	3,086.41	-150.1	-34.8	86.3	6.00	6.00	0.00
1,700.0	39.00	193.06	1,651.0	3,005.54	-207.3	-48.1	119.3	6.00	6.00	0.00
EOB TO 39.61° INC										
1,710.1	39.61	193.06	1,658.8	2,997.73	-213.5	-49.5	122.8	6.00	6.00	0.00
1,800.0	39.61	193.06	1,728.0	2,928.46	-269.4	-62.5	155.0	0.00	0.00	0.00
1,900.0	39.61	193.06	1,805.1	2,851.42	-331.5	-76.9	190.7	0.00	0.00	0.00
2,000.0	39.61	193.06	1,882.1	2,774.37	-393.6	-91.3	226.4	0.00	0.00	0.00
2,100.0	39.61	193.06	1,959.2	2,697.33	-455.7	-105.7	262.1	0.00	0.00	0.00
2,200.0	39.61	193.06	2,036.2	2,620.28	-517.8	-120.1	297.9	0.00	0.00	0.00
2,300.0	39.61	193.06	2,113.3	2,543.24	-579.9	-134.5	333.6	0.00	0.00	0.00
2,400.0	39.61	193.06	2,190.3	2,466.19	-642.0	-149.0	369.3	0.00	0.00	0.00
2,500.0	39.61	193.06	2,267.4	2,389.15	-704.1	-163.4	405.0	0.00	0.00	0.00
2,600.0	39.61	193.06	2,344.4	2,312.10	-766.2	-177.8	440.7	0.00	0.00	0.00
2,700.0	39.61	193.06	2,421.4	2,235.06	-828.3	-192.2	476.5	0.00	0.00	0.00
2,800.0	39.61	193.06	2,498.5	2,158.01	-890.4	-206.6	512.2	0.00	0.00	0.00
2,900.0	39.61	193.06	2,575.5	2,080.97	-952.5	-221.0	547.9	0.00	0.00	0.00
3,000.0	39.61	193.06	2,652.6	2,003.92	-1,014.6	-235.4	583.6	0.00	0.00	0.00
3,100.0	39.61	193.06	2,729.6	1,926.88	-1,076.7	-249.8	619.4	0.00	0.00	0.00
3,200.0	39.61	193.06	2,806.7	1,849.83	-1,138.8	-264.2	655.1	0.00	0.00	0.00
3,300.0	39.61	193.06	2,883.7	1,772.79	-1,200.9	-278.6	690.8	0.00	0.00	0.00
3,400.0	39.61	193.06	2,960.8	1,695.74	-1,263.0	-293.1	726.5	0.00	0.00	0.00
3,500.0	39.61	193.06	3,037.8	1,618.70	-1,325.1	-307.5	762.3	0.00	0.00	0.00
3,600.0	39.61	193.06	3,114.8	1,541.65	-1,387.2	-321.9	798.0	0.00	0.00	0.00
3,700.0	39.61	193.06	3,191.9	1,464.61	-1,449.3	-336.3	833.7	0.00	0.00	0.00
3,800.0	39.61	193.06	3,268.9	1,387.56	-1,511.4	-350.7	869.4	0.00	0.00	0.00
3,900.0	39.61	193.06	3,346.0	1,310.52	-1,573.5	-365.1	905.2	0.00	0.00	0.00
4,000.0	39.61	193.06	3,423.0	1,233.48	-1,635.6	-379.5	940.9	0.00	0.00	0.00
4,100.0	39.61	193.06	3,500.1	1,156.43	-1,697.7	-393.9	976.6	0.00	0.00	0.00
4,200.0	39.61	193.06	3,577.1	1,079.39	-1,759.8	-408.3	1,012.3	0.00	0.00	0.00
PARKMAN										
4,212.2	39.61	193.06	3,586.5	1,070.00	-1,767.3	-410.1	1,016.7	0.00	0.00	0.00
4,300.0	39.61	193.06	3,654.2	1,002.34	-1,821.9	-422.7	1,048.1	0.00	0.00	0.00
4,400.0	39.61	193.06	3,731.2	925.30	-1,884.0	-437.1	1,083.8	0.00	0.00	0.00
4,500.0	39.61	193.06	3,808.2	848.25	-1,946.1	-451.6	1,119.5	0.00	0.00	0.00
4,600.0	39.61	193.06	3,885.3	771.21	-2,008.2	-466.0	1,155.2	0.00	0.00	0.00

Database:	EDM 5000.1 Single User Db	Local Co-ordinate Reference:	Well DT-FORBES C7-5-6
Company:	EXTRACTION OIL & GAS	TVD Reference:	KB-EST @ 4656.5usft (SAV 802)
Project:	WELD COUNTY, COLORADO (NAD 83)	MD Reference:	KB-EST @ 4656.5usft (SAV 802)
Site:	NW NE SEC. 5 T5N R65W 6th P.M.	North Reference:	True
Well:	DT-FORBES C7-5-6	Survey Calculation Method:	Minimum Curvature
Wellbore:	ORIGINAL WELLBORE		
Design:	PROPOSAL #2		

Planned Survey

MD (usft)	Inc (°)	Azi (°)	TVD (usft)	SS (usft)	+N/-S (usft)	+E/-W (usft)	Vertical Section (usft)	Dogleg Rate (°/100usft)	Build Rate (°/100usft)	Turn Rate (°/100usft)
4,700.0	39.61	193.06	3,962.3	694.16	-2,070.3	-480.4	1,191.0	0.00	0.00	0.00
4,800.0	39.61	193.06	4,039.4	617.12	-2,132.4	-494.8	1,226.7	0.00	0.00	0.00
4,900.0	39.61	193.06	4,116.4	540.07	-2,194.5	-509.2	1,262.4	0.00	0.00	0.00
5,000.0	39.61	193.06	4,193.5	463.03	-2,256.6	-523.6	1,298.1	0.00	0.00	0.00
5,100.0	39.61	193.06	4,270.5	385.98	-2,318.7	-538.0	1,333.9	0.00	0.00	0.00
SUSSEX										
5,125.9	39.61	193.06	4,290.5	366.00	-2,334.8	-541.7	1,343.1	0.00	0.00	0.00
5,200.0	39.61	193.06	4,347.6	308.94	-2,380.8	-552.4	1,369.6	0.00	0.00	0.00
5,300.0	39.61	193.06	4,424.6	231.89	-2,442.9	-566.8	1,405.3	0.00	0.00	0.00
5,400.0	39.61	193.06	4,501.7	154.85	-2,505.0	-581.2	1,441.0	0.00	0.00	0.00
5,500.0	39.61	193.06	4,578.7	77.80	-2,567.1	-595.7	1,476.7	0.00	0.00	0.00
5,600.0	39.61	193.06	4,655.7	0.76	-2,629.2	-610.1	1,512.5	0.00	0.00	0.00
5,700.0	39.61	193.06	4,732.8	-76.29	-2,691.3	-624.5	1,548.2	0.00	0.00	0.00
5,800.0	39.61	193.06	4,809.8	-153.33	-2,753.4	-638.9	1,583.9	0.00	0.00	0.00
SHANNON										
5,833.3	39.61	193.06	4,835.5	-179.00	-2,774.1	-643.7	1,595.8	0.00	0.00	0.00
5,900.0	39.61	193.06	4,886.9	-230.38	-2,815.5	-653.3	1,619.6	0.00	0.00	0.00
6,000.0	39.61	193.06	4,963.9	-307.42	-2,877.6	-667.7	1,655.4	0.00	0.00	0.00
6,100.0	39.61	193.06	5,041.0	-384.47	-2,939.7	-682.1	1,691.1	0.00	0.00	0.00
6,200.0	39.61	193.06	5,118.0	-461.51	-3,001.8	-696.5	1,726.8	0.00	0.00	0.00
6,300.0	39.61	193.06	5,195.1	-538.56	-3,063.9	-710.9	1,762.5	0.00	0.00	0.00
6,400.0	39.61	193.06	5,272.1	-615.60	-3,126.0	-725.3	1,798.3	0.00	0.00	0.00
6,500.0	39.61	193.06	5,349.1	-692.65	-3,188.1	-739.7	1,834.0	0.00	0.00	0.00
6,600.0	39.61	193.06	5,426.2	-769.69	-3,250.2	-754.2	1,869.7	0.00	0.00	0.00
6,700.0	39.61	193.06	5,503.2	-846.74	-3,312.3	-768.6	1,905.4	0.00	0.00	0.00
6,800.0	39.61	193.06	5,580.3	-923.78	-3,374.4	-783.0	1,941.2	0.00	0.00	0.00
6,900.0	39.61	193.06	5,657.3	-1,000.83	-3,436.5	-797.4	1,976.9	0.00	0.00	0.00
7,000.0	39.61	193.06	5,734.4	-1,077.87	-3,498.6	-811.8	2,012.6	0.00	0.00	0.00
7,100.0	39.61	193.06	5,811.4	-1,154.92	-3,560.7	-826.2	2,048.3	0.00	0.00	0.00
END OF TANGENT										
7,122.6	39.61	193.06	5,828.8	-1,172.33	-3,574.7	-829.5	2,056.4	0.00	0.00	0.00
7,200.0	34.96	193.06	5,890.4	-1,233.90	-3,620.4	-840.1	2,082.7	6.00	-6.00	0.00
7,300.0	28.96	193.06	5,975.2	-1,318.70	-3,671.9	-852.0	2,112.3	6.00	-6.00	0.00
7,400.0	22.96	193.06	6,065.1	-1,408.57	-3,714.5	-861.9	2,136.8	6.00	-6.00	0.00
7,500.0	16.96	193.06	6,159.0	-1,502.52	-3,747.8	-869.6	2,156.0	6.00	-6.00	0.00
7,600.0	10.96	193.06	6,256.0	-1,599.52	-3,771.3	-875.1	2,169.5	6.00	-6.00	0.00
7,700.0	4.96	193.06	6,355.0	-1,698.51	-3,784.8	-878.2	2,177.2	6.00	-6.00	0.00
EOD TO VERTICAL										
7,782.7	0.00	0.00	6,437.6	-1,781.10	-3,788.2	-879.0	2,179.2	6.00	-6.00	0.00
7,800.0	0.00	0.00	6,454.9	-1,798.40	-3,788.2	-879.0	2,179.2	0.00	0.00	0.00
KOP (10°/100ft BUR)										
7,812.7	0.00	0.00	6,467.6	-1,811.10	-3,788.2	-879.0	2,179.2	0.00	0.00	0.00
7,900.0	8.73	273.95	6,554.6	-1,898.07	-3,787.8	-885.6	2,185.3	10.00	10.00	0.00
8,000.0	18.73	273.95	6,651.6	-1,995.09	-3,786.1	-909.3	2,206.8	10.00	10.00	0.00
SHARON SPRINGS										
8,063.5	25.09	273.95	6,710.5	-2,054.00	-3,784.5	-932.9	2,228.2	10.00	10.00	0.00
NIOBRARA										
8,097.1	28.45	273.95	6,740.5	-2,084.00	-3,783.5	-948.0	2,242.0	10.00	10.00	0.00
8,100.0	28.73	273.95	6,743.0	-2,086.51	-3,783.4	-949.4	2,243.2	10.00	10.00	0.00
8,200.0	38.73	273.95	6,826.1	-2,169.57	-3,779.6	-1,004.7	2,293.5	10.00	10.00	0.00
8,300.0	48.74	273.95	6,898.2	-2,241.73	-3,774.8	-1,073.6	2,356.1	10.00	10.00	0.00
8,400.0	58.74	273.95	6,957.3	-2,300.81	-3,769.2	-1,153.9	2,429.1	10.00	10.00	0.00
8,500.0	68.74	273.95	7,001.5	-2,345.00	-3,763.1	-1,243.3	2,510.3	10.00	10.00	0.00

Database:	EDM 5000.1 Single User Db	Local Co-ordinate Reference:	Well DT-FORBES C7-5-6
Company:	EXTRACTION OIL & GAS	TVD Reference:	KB-EST @ 4656.5usft (SAV 802)
Project:	WELD COUNTY, COLORADO (NAD 83)	MD Reference:	KB-EST @ 4656.5usft (SAV 802)
Site:	NW NE SEC. 5 T5N R65W 6th P.M.	North Reference:	True
Well:	DT-FORBES C7-5-6	Survey Calculation Method:	Minimum Curvature
Wellbore:	ORIGINAL WELLBORE		
Design:	PROPOSAL #2		

Planned Survey

MD (usft)	Inc (°)	Azi (°)	TVD (usft)	SS (usft)	+N/-S (usft)	+E/-W (usft)	Vertical Section (usft)	Dogleg Rate (°/100usft)	Build Rate (°/100usft)	Turn Rate (°/100usft)
FORT HAYS										
8,511.3	69.87	273.95	7,005.5	-2,349.00	-3,762.3	-1,253.8	2,519.8	10.00	10.00	0.00
8,600.0	78.74	273.95	7,029.5	-2,372.97	-3,756.4	-1,338.9	2,597.2	10.00	10.00	0.00
CODELL										
8,605.4	79.28	273.95	7,030.5	-2,374.00	-3,756.1	-1,344.2	2,602.0	10.00	10.00	0.00
8,700.0	88.74	273.95	7,040.4	-2,383.86	-3,749.6	-1,438.0	2,687.2	10.00	10.00	0.00
7" ICP - DT-FORBES C7-5-6										
8,712.6	90.00	273.95	7,040.5	-2,384.00	-3,748.7	-1,450.5	2,698.6	10.00	10.00	0.00
8,800.0	90.00	273.95	7,040.5	-2,384.00	-3,742.7	-1,537.7	2,777.8	0.00	0.00	0.00
8,900.0	90.00	273.95	7,040.5	-2,383.99	-3,735.8	-1,637.5	2,868.5	0.00	0.00	0.00
9,000.0	90.00	273.95	7,040.5	-2,383.99	-3,728.9	-1,737.3	2,959.1	0.00	0.00	0.00
9,100.0	90.00	273.95	7,040.5	-2,383.98	-3,722.0	-1,837.0	3,049.8	0.00	0.00	0.00
9,200.0	90.00	273.95	7,040.5	-2,383.98	-3,715.1	-1,936.8	3,140.4	0.00	0.00	0.00
9,300.0	90.00	273.95	7,040.5	-2,383.98	-3,708.2	-2,036.5	3,231.1	0.00	0.00	0.00
9,400.0	90.00	273.95	7,040.5	-2,383.97	-3,701.3	-2,136.3	3,321.7	0.00	0.00	0.00
9,500.0	90.00	273.95	7,040.5	-2,383.97	-3,694.4	-2,236.1	3,412.4	0.00	0.00	0.00
9,600.0	90.00	273.95	7,040.5	-2,383.97	-3,687.5	-2,335.8	3,503.0	0.00	0.00	0.00
9,700.0	90.00	273.95	7,040.5	-2,383.96	-3,680.7	-2,435.6	3,593.7	0.00	0.00	0.00
9,800.0	90.00	273.95	7,040.5	-2,383.96	-3,673.8	-2,535.3	3,684.3	0.00	0.00	0.00
9,900.0	90.00	273.95	7,040.5	-2,383.96	-3,666.9	-2,635.1	3,775.0	0.00	0.00	0.00
10,000.0	90.00	273.95	7,040.5	-2,383.95	-3,660.0	-2,734.9	3,865.6	0.00	0.00	0.00
10,100.0	90.00	273.95	7,040.5	-2,383.95	-3,653.1	-2,834.6	3,956.3	0.00	0.00	0.00
10,200.0	90.00	273.95	7,040.4	-2,383.95	-3,646.2	-2,934.4	4,046.9	0.00	0.00	0.00
10,300.0	90.00	273.95	7,040.4	-2,383.95	-3,639.3	-3,034.2	4,137.6	0.00	0.00	0.00
10,400.0	90.00	273.95	7,040.4	-2,383.94	-3,632.4	-3,133.9	4,228.2	0.00	0.00	0.00
10,500.0	90.00	273.95	7,040.4	-2,383.94	-3,625.5	-3,233.7	4,318.9	0.00	0.00	0.00
10,600.0	90.00	273.95	7,040.4	-2,383.94	-3,618.6	-3,333.4	4,409.5	0.00	0.00	0.00
10,700.0	90.00	273.95	7,040.4	-2,383.94	-3,611.7	-3,433.2	4,500.2	0.00	0.00	0.00
10,800.0	90.00	273.95	7,040.4	-2,383.94	-3,604.8	-3,533.0	4,590.9	0.00	0.00	0.00
10,900.0	90.00	273.95	7,040.4	-2,383.93	-3,598.0	-3,632.7	4,681.5	0.00	0.00	0.00
11,000.0	90.00	273.95	7,040.4	-2,383.93	-3,591.1	-3,732.5	4,772.2	0.00	0.00	0.00
11,100.0	90.00	273.95	7,040.4	-2,383.93	-3,584.2	-3,832.3	4,862.8	0.00	0.00	0.00
11,200.0	90.00	273.95	7,040.4	-2,383.93	-3,577.3	-3,932.0	4,953.5	0.00	0.00	0.00
11,300.0	90.00	273.95	7,040.4	-2,383.93	-3,570.4	-4,031.8	5,044.1	0.00	0.00	0.00
11,400.0	90.00	273.95	7,040.4	-2,383.93	-3,563.5	-4,131.5	5,134.8	0.00	0.00	0.00
11,500.0	90.00	273.95	7,040.4	-2,383.93	-3,556.6	-4,231.3	5,225.4	0.00	0.00	0.00
11,600.0	90.00	273.95	7,040.4	-2,383.93	-3,549.7	-4,331.1	5,316.1	0.00	0.00	0.00
11,700.0	90.00	273.95	7,040.4	-2,383.93	-3,542.9	-4,430.8	5,406.7	0.00	0.00	0.00
11,800.0	90.00	273.95	7,040.4	-2,383.92	-3,536.0	-4,530.6	5,497.4	0.00	0.00	0.00
11,900.0	90.00	273.95	7,040.4	-2,383.92	-3,529.1	-4,630.4	5,588.0	0.00	0.00	0.00
12,000.0	90.00	273.95	7,040.4	-2,383.92	-3,522.2	-4,730.1	5,678.7	0.00	0.00	0.00
12,100.0	90.00	273.95	7,040.4	-2,383.92	-3,515.3	-4,829.9	5,769.4	0.00	0.00	0.00
12,200.0	90.00	273.95	7,040.4	-2,383.92	-3,508.4	-4,929.6	5,860.0	0.00	0.00	0.00
12,300.0	90.00	273.95	7,040.4	-2,383.92	-3,501.5	-5,029.4	5,950.7	0.00	0.00	0.00
12,400.0	90.00	273.95	7,040.4	-2,383.92	-3,494.7	-5,129.2	6,041.3	0.00	0.00	0.00
12,500.0	90.00	273.95	7,040.4	-2,383.92	-3,487.8	-5,228.9	6,132.0	0.00	0.00	0.00
12,600.0	90.00	273.95	7,040.4	-2,383.92	-3,480.9	-5,328.7	6,222.6	0.00	0.00	0.00
12,700.0	90.00	273.95	7,040.4	-2,383.92	-3,474.0	-5,428.5	6,313.3	0.00	0.00	0.00
12,800.0	90.00	273.95	7,040.4	-2,383.93	-3,467.1	-5,528.2	6,403.9	0.00	0.00	0.00
12,900.0	90.00	273.95	7,040.4	-2,383.93	-3,460.2	-5,628.0	6,494.6	0.00	0.00	0.00
13,000.0	90.00	273.95	7,040.4	-2,383.93	-3,453.3	-5,727.7	6,585.3	0.00	0.00	0.00
13,100.0	90.00	273.95	7,040.4	-2,383.93	-3,446.5	-5,827.5	6,675.9	0.00	0.00	0.00
13,200.0	90.00	273.95	7,040.4	-2,383.93	-3,439.6	-5,927.3	6,766.6	0.00	0.00	0.00

Planning Report



Database:	EDM 5000.1 Single User Db	Local Co-ordinate Reference:	Well DT-FORBES C7-5-6
Company:	EXTRACTION OIL & GAS	TVD Reference:	KB-EST @ 4656.5usft (SAV 802)
Project:	WELD COUNTY, COLORADO (NAD 83)	MD Reference:	KB-EST @ 4656.5usft (SAV 802)
Site:	NW NE SEC. 5 T5N R65W 6th P.M.	North Reference:	True
Well:	DT-FORBES C7-5-6	Survey Calculation Method:	Minimum Curvature
Wellbore:	ORIGINAL WELLBORE		
Design:	PROPOSAL #2		

Planned Survey										
MD (usft)	Inc (°)	Azi (°)	TVD (usft)	SS (usft)	+N/-S (usft)	+E/-W (usft)	Vertical Section (usft)	Dogleg Rate (°/100usft)	Build Rate (°/100usft)	Turn Rate (°/100usft)
13,300.0	90.00	273.95	7,040.4	-2,383.93	-3,432.7	-6,027.0	6,857.2	0.00	0.00	0.00
13,400.0	90.00	273.95	7,040.4	-2,383.93	-3,425.8	-6,126.8	6,947.9	0.00	0.00	0.00
13,500.0	90.00	273.95	7,040.4	-2,383.93	-3,418.9	-6,226.6	7,038.5	0.00	0.00	0.00
13,600.0	90.00	273.95	7,040.4	-2,383.93	-3,412.1	-6,326.3	7,129.2	0.00	0.00	0.00
13,700.0	90.00	273.95	7,040.4	-2,383.94	-3,405.2	-6,426.1	7,219.9	0.00	0.00	0.00
13,800.0	90.00	273.95	7,040.4	-2,383.94	-3,398.3	-6,525.9	7,310.5	0.00	0.00	0.00
13,900.0	90.00	273.95	7,040.4	-2,383.94	-3,391.4	-6,625.6	7,401.2	0.00	0.00	0.00
14,000.0	90.00	273.95	7,040.4	-2,383.94	-3,384.5	-6,725.4	7,491.8	0.00	0.00	0.00
14,100.0	90.00	273.94	7,040.4	-2,383.94	-3,377.7	-6,825.1	7,582.5	0.00	0.00	0.00
14,200.0	90.00	273.94	7,040.4	-2,383.95	-3,370.8	-6,924.9	7,673.1	0.00	0.00	0.00
14,300.0	90.00	273.94	7,040.4	-2,383.95	-3,363.9	-7,024.7	7,763.8	0.00	0.00	0.00
14,400.0	90.00	273.94	7,040.5	-2,383.95	-3,357.0	-7,124.4	7,854.5	0.00	0.00	0.00
14,500.0	90.00	273.94	7,040.5	-2,383.95	-3,350.1	-7,224.2	7,945.1	0.00	0.00	0.00
14,600.0	90.00	273.94	7,040.5	-2,383.96	-3,343.3	-7,324.0	8,035.8	0.00	0.00	0.00
14,700.0	90.00	273.94	7,040.5	-2,383.96	-3,336.4	-7,423.7	8,126.4	0.00	0.00	0.00
14,800.0	90.00	273.94	7,040.5	-2,383.96	-3,329.5	-7,523.5	8,217.1	0.00	0.00	0.00
14,900.0	90.00	273.94	7,040.5	-2,383.97	-3,322.6	-7,623.2	8,307.8	0.00	0.00	0.00
15,000.0	90.00	273.94	7,040.5	-2,383.97	-3,315.8	-7,723.0	8,398.4	0.00	0.00	0.00
15,100.0	90.00	273.94	7,040.5	-2,383.97	-3,308.9	-7,822.8	8,489.1	0.00	0.00	0.00
15,200.0	90.00	273.94	7,040.5	-2,383.98	-3,302.0	-7,922.5	8,579.7	0.00	0.00	0.00
15,300.0	90.00	273.94	7,040.5	-2,383.98	-3,295.1	-8,022.3	8,670.4	0.00	0.00	0.00
15,400.0	90.00	273.94	7,040.5	-2,383.98	-3,288.2	-8,122.1	8,761.1	0.00	0.00	0.00
15,500.0	90.00	273.94	7,040.5	-2,383.99	-3,281.4	-8,221.8	8,851.7	0.00	0.00	0.00
15,600.0	90.00	273.94	7,040.5	-2,383.99	-3,274.5	-8,321.6	8,942.4	0.00	0.00	0.00
15,700.0	90.00	273.94	7,040.5	-2,384.00	-3,267.6	-8,421.4	9,033.0	0.00	0.00	0.00
BHL - DT-FORBES C7-5-6										
15,770.4	90.00	273.94	7,040.5	-2,384.00	-3,262.8	-8,491.6	9,096.9	0.00	0.00	0.00

Formations						
MD (usft)	TVD (usft)	Name	Lithology	Dip (°)	Dip Direction (°)	
4,212.2	3,586.5	PARKMAN				
5,125.9	4,290.5	SUSSEX				
5,833.3	4,835.5	SHANNON				
8,063.5	6,710.5	SHARON SPRINGS				
8,097.1	6,740.5	NIOBRARA				
8,511.3	7,005.5	FORT HAYS				
8,605.4	7,030.5	CODELL				

Database:	EDM 5000.1 Single User Db	Local Co-ordinate Reference:	Well DT-FORBES C7-5-6
Company:	EXTRACTION OIL & GAS	TVD Reference:	KB-EST @ 4656.5usft (SAV 802)
Project:	WELD COUNTY, COLORADO (NAD 83)	MD Reference:	KB-EST @ 4656.5usft (SAV 802)
Site:	NW NE SEC. 5 T5N R65W 6th P.M.	North Reference:	True
Well:	DT-FORBES C7-5-6	Survey Calculation Method:	Minimum Curvature
Wellbore:	ORIGINAL WELLBORE		
Design:	PROPOSAL #2		

Plan Annotations

MD (usft)	TVD (usft)	Local Coordinates		Comment
		+N/-S (usft)	+E/-W (usft)	
1,050.0	1,050.0	0.0	0.0	START NUDGE (6°/100ft BUR)
1,710.1	1,658.8	-213.5	-49.5	EOB TO 39.61° INC
7,122.6	5,828.8	-3,574.7	-829.5	END OF TANGENT
7,782.7	6,437.6	-3,788.2	-879.0	EOD TO VERTICAL
7,812.7	6,467.6	-3,788.2	-879.0	KOP (10°/100ft BUR)
8,712.6	7,040.5	-3,748.7	-1,450.5	7" ICP - DT-FORBES C7-5-6
15,770.4	7,040.5	-3,262.8	-8,491.6	BHL - DT-FORBES C7-5-6