

Kaleb Roush

From: Ty Entenmann
Sent: Wednesday, November 26, 2014 9:07 AM
To: Kaleb Roush
Subject: Fwd: Diamond Valley East #13 - Sidetrack
Attachments: image002.emz

Here is their approved email.

Ty Entenmann
Drilling Engineer
Extraction Oil & Gas

----- Forwarded message -----

From: "Diana Burn - DNR" <diana.burn@state.co.us>
To: "Ty Entenmann" <tentenmann@extractionog.com>
Cc: "Dustin Dyk" <DDyk@ExtractionOG.com>, "Mike Hickey - DNR" <michael.hickey@state.co.us>, "Penny Garrison - DNR" <penny.garrison@state.co.us>, "Barbara Westerdale - DNR" <barbara.westerdale@state.co.us>
Subject: Diamond Valley East #13 - Sidetrack
Date: Wed, Nov 26, 2014 8:47 AM

Please proceed as proposed – APD should be received by close of business today.

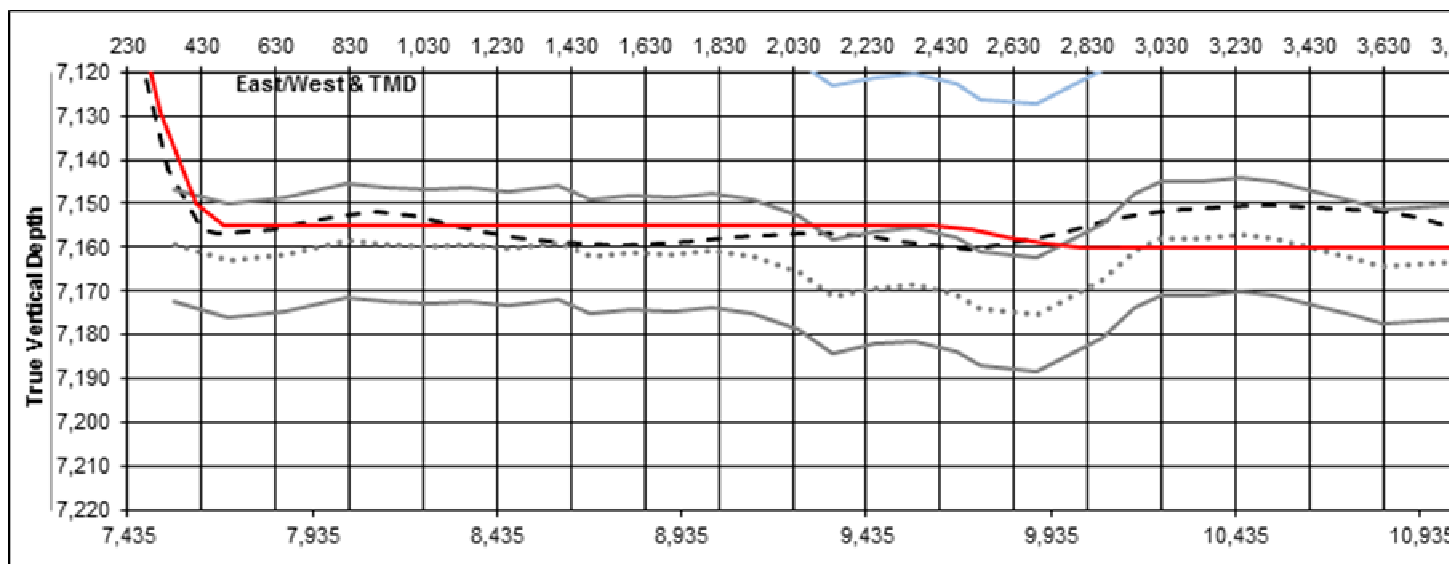
Thanks,
Diana

From: Ty Entenmann [mailto:tentenmann@extractionog.com]
Sent: Wednesday, November 26, 2014 7:56 AM
To: Diana.burn@state.co.us
Cc: Dustin Dyk
Subject: Diamond Valley East #13 - Sidetrack

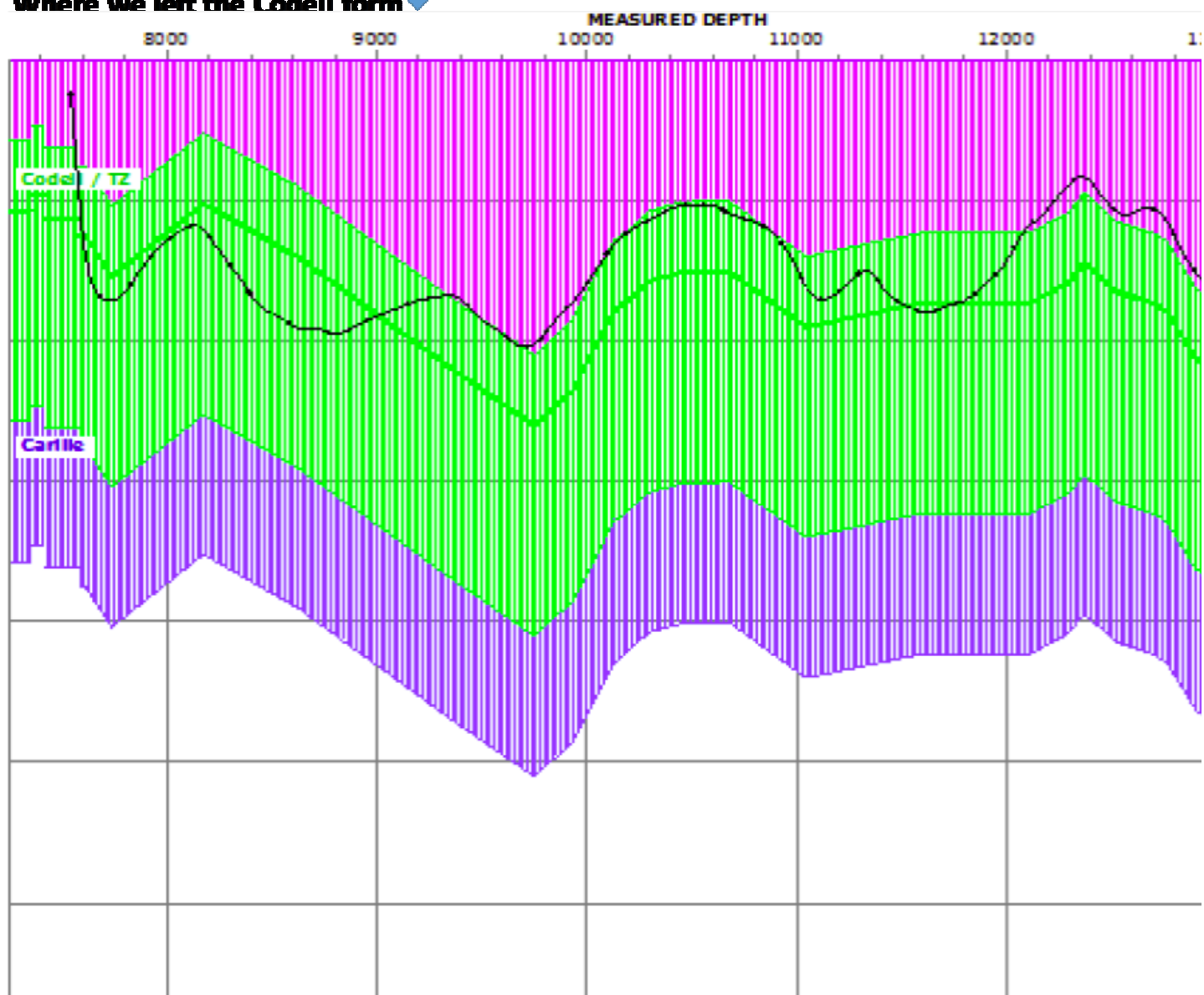
Diana-

We are having an issue on the Dimond Valley East #13 (API# - 05-123-40317-00). We had no issues maintaining the target zone until roughly 12100', where we exited. Seismic data shows the formation top above our current depth and our off-set horizontal wells showed a 10' fault shifting the Niobrara upward. Neither of these have proved to be true. We have spent the rest of the lateral trying to get back in zone with no success. As you can see we have been skipping off the top of the Codell since.

Here are two visual explanation of what we have seen so far:



Where we left the Codell form



We have spent too much time out of zone and need to sidetrack.

I would like to open hole sidetrack, if the State will allow it. Tentatively, I am planning to open hole sidetrack about 11944' . We will cement this liner after sidetrack is complete and drilled to TD, so isolation will not be an issue.

Total MD drilled to: 16,430'

Surface casing – 9 5/8" 36# set at 806'.

Intermediate casing – 7" 26# set at 7726'.

No fish in hole

No plug planned

Proposed sidetrack point – 11944'

Objective formation of sidetrack: Codell

Proposed BHL: 2634 FSL 460 FWL Sec 21, T6N, R67W (Same as original APD).

I will call you to discuss sometime after 8 AM this morning.

Thanks for your time,



Ty Entenmann

Drilling Engineer

Extraction Oil & Gas

1888 Sherman Street, Suite 200

Denver, CO 80203

Direct: 720.557.8326

Cell: 406.425.1150

www.ExtractionOG.com

Total Control Panel

[Login](#)

To: ntenmann@extractionog.com [Remove](#) this sender from my allow list

From: diana.burn@state.co.us

You received this message because the sender is on your allow list.