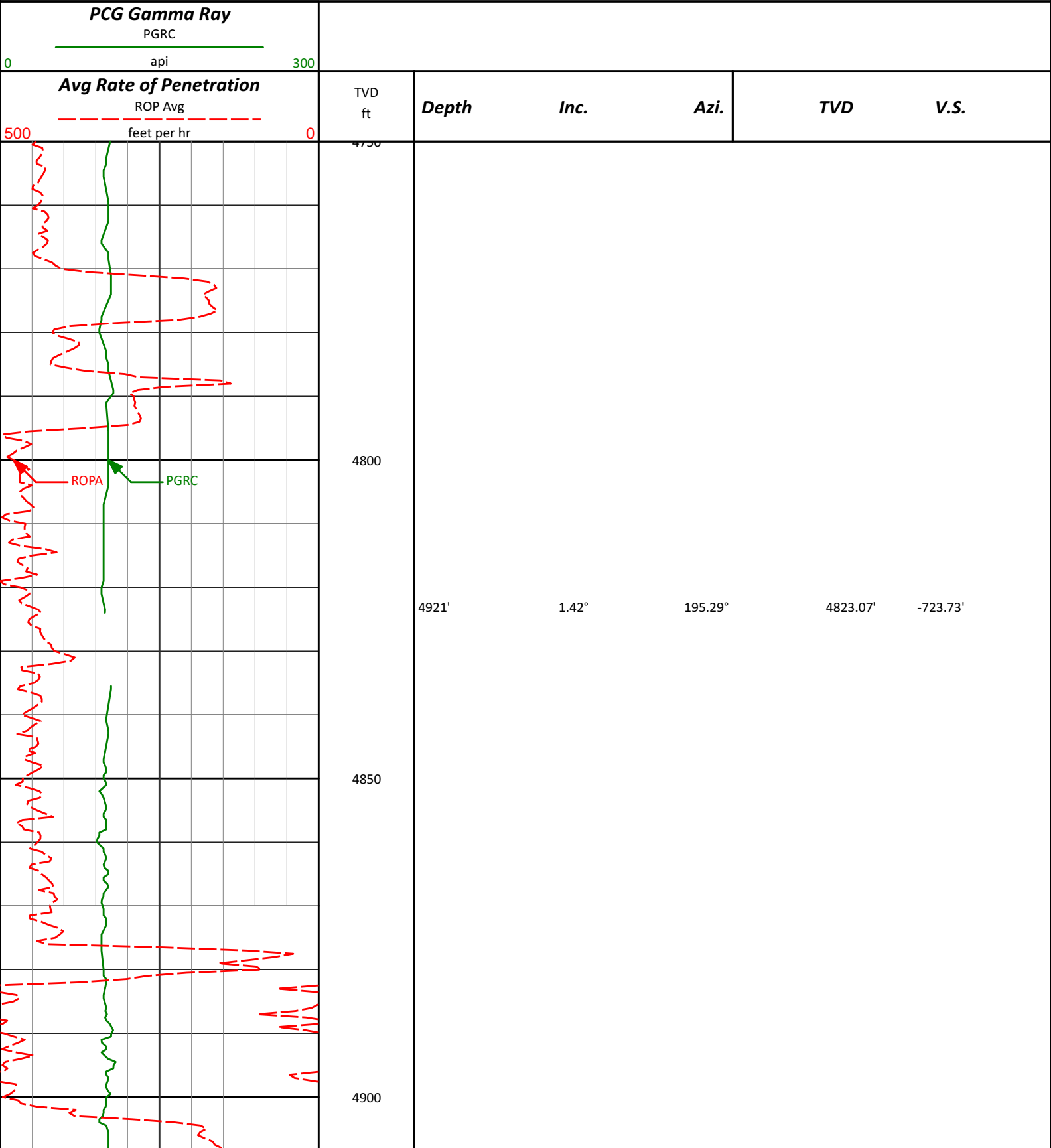
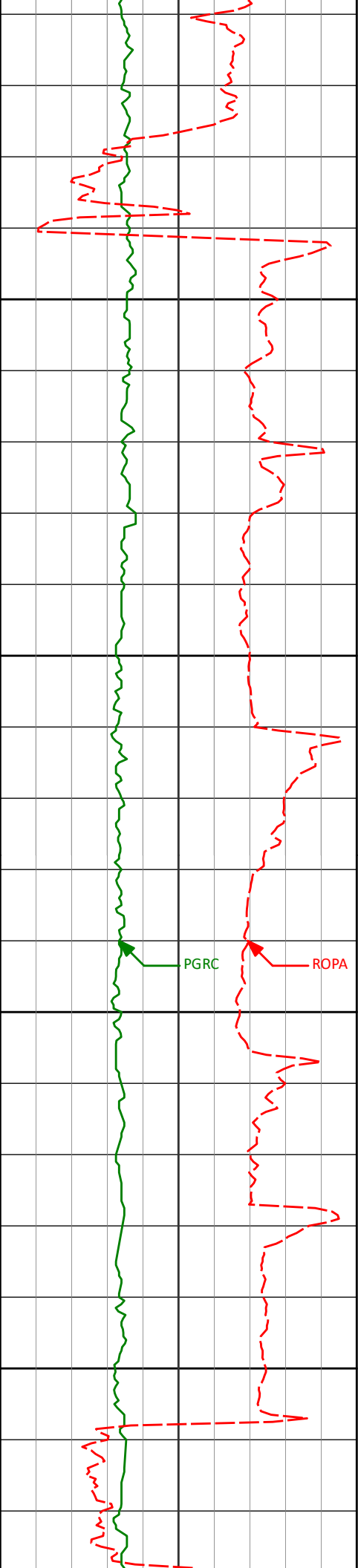


**HALLIBURTON**  
**Sperry Drilling Services**  
**TVD Detail Log 1:240**

Whiting Oil & Gas  
Horsetail 30F-1943  
Xtreme 18  
Sec. 30-T10N-R57W





4950

5000

5050

5100

5012'

1.82°

180.21°

4914.04'

-726.25'

5057'

2.09°

317.39°

4959.02'

-726.34'

5103'

9.42°

350.08°

5004.77'

-721.95'

5148'

17.76°

357.19°

5048.47'

-711.42'

5195'

22.61°

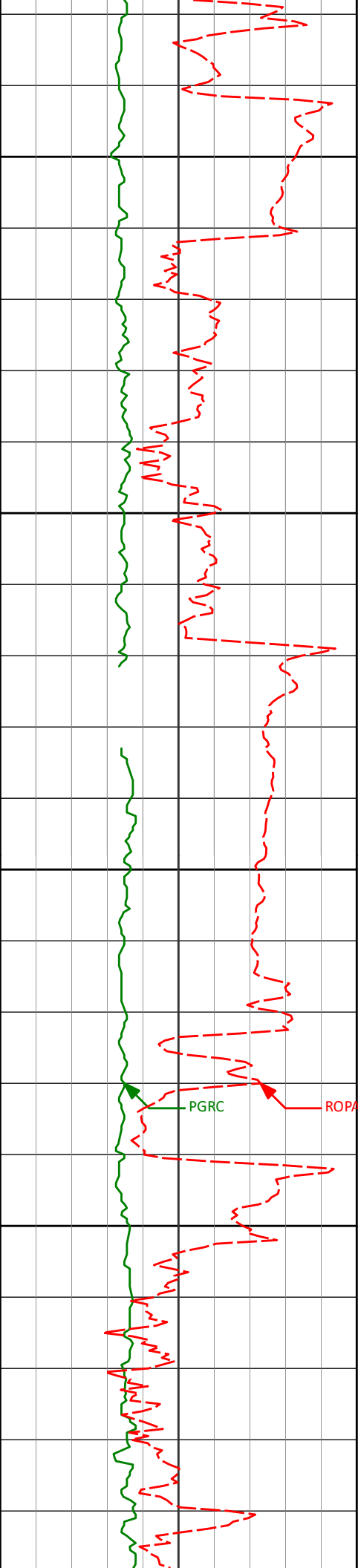
357.86°

5092.57'

-695.21'

PGRC

ROPA



5150

5280'

25.76°

2.41°

5170.11'

-660.46'

5200

5367'

32.81°

6.34°

5245.95'

-618.28'

5250

5300

5457'

37.66°

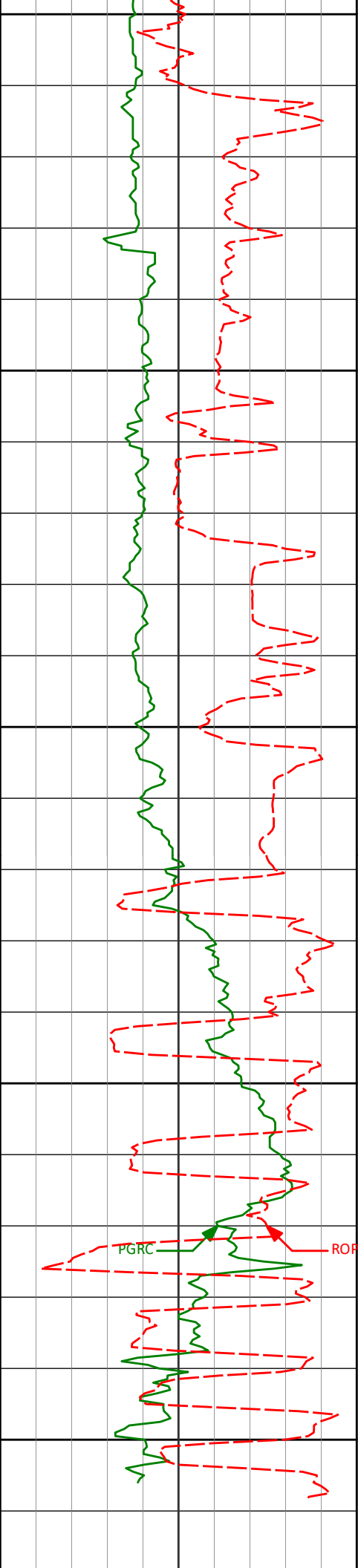
8.18°

5319.44'

-567.15'

PGRC

ROPA



5350

5543'

43.17°

5.62°

5384.90'

-512.17'

5400

5588'

47.40°

4.89°

5416.55'

-480.50'

5633'

52.37°

4.39°

5445.54'

-446.37'

5450

5675'

58.51°

3.70°

5469.35'

-412.03'

5720'

63.50°

4.10°

5491.16'

-372.93'

5500

5765'

68.31°

3.06°

5509.53'

-332.10'

5810'

73.62°

2.39°

5524.20'

-289.76'

5855'

76.28°

2.50°

5535.88'

-246.48'

5899'

78.47°

2.82°

5545.50'

-203.72'

5550

[illegible]

[illegible]

[illegible]

[illegible]





[illegible]

[illegible]