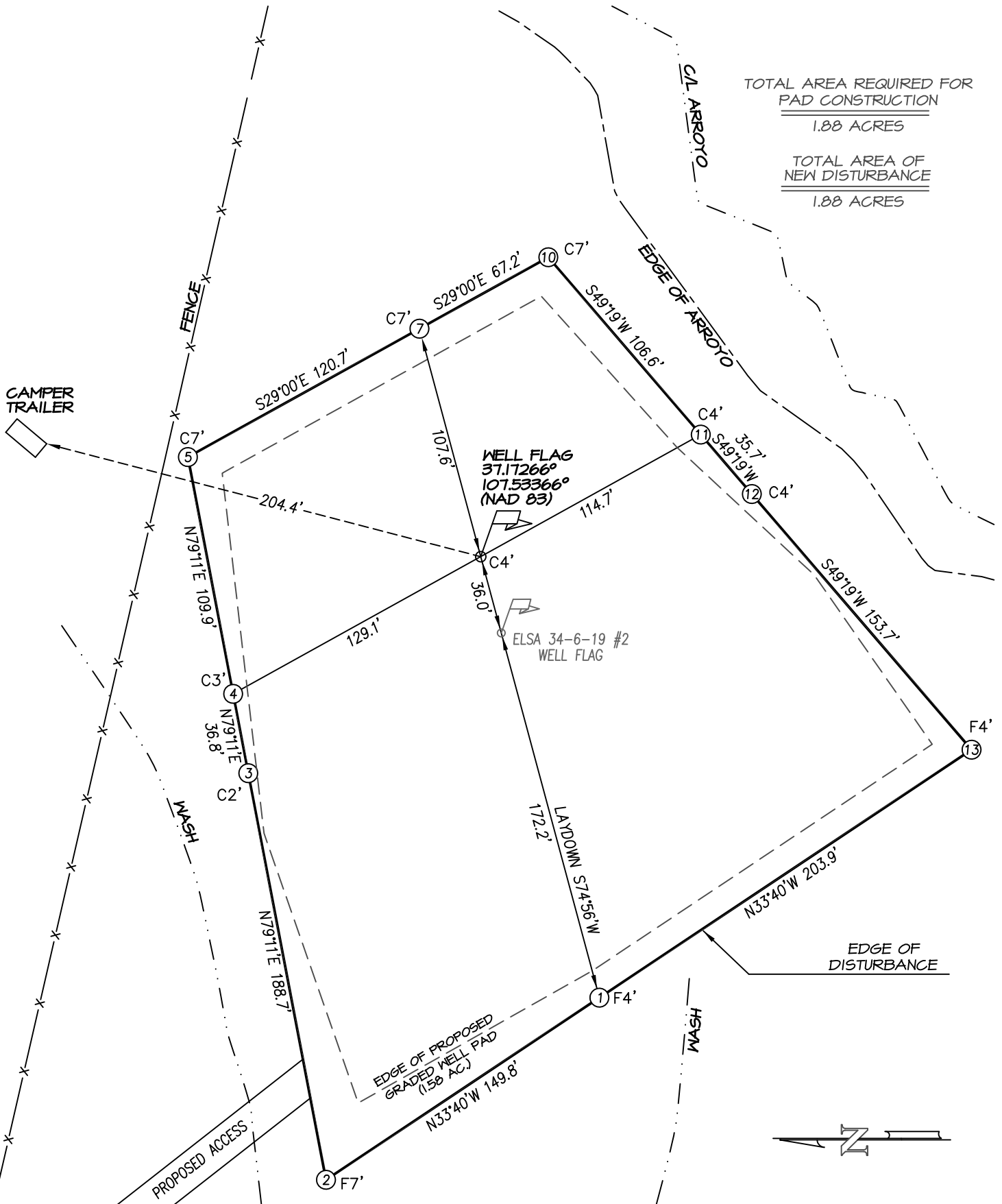


CATAMOUNT ENERGY PARTNERS: ELSA 34-6-19 #1
1303' FSL, 290' FEL, SECTION 19, T-34-N, R-6-W, S.U.L., N.M.P.M.,
LA PLATA COUNTY, CO. GROUND LEVEL ELEVATION: 6973'
PAD DRAWING



TOTAL AREA REQUIRED FOR
 PAD CONSTRUCTION

1.88 ACRES

TOTAL AREA OF
 NEW DISTURBANCE

1.88 ACRES

SCALE: 1" = 60'

DATE DRAWN: 5/7/14

NORTHSTAR SURVEYING & MAPPING, INC.

FILE NO: CEP07CFA

DRAWN BY: K.R.

CHECKED BY: K.R.