

EXTRACTION OIL & GAS

WELD COUNTY, COLORADO (NAD 83)

NW NE SEC. 5 T5N R65W 6th P.M.

DT-FORBES 2-5-6

ORIGINAL WELLBORE

17 November, 2014

Plan: PROPOSAL #2

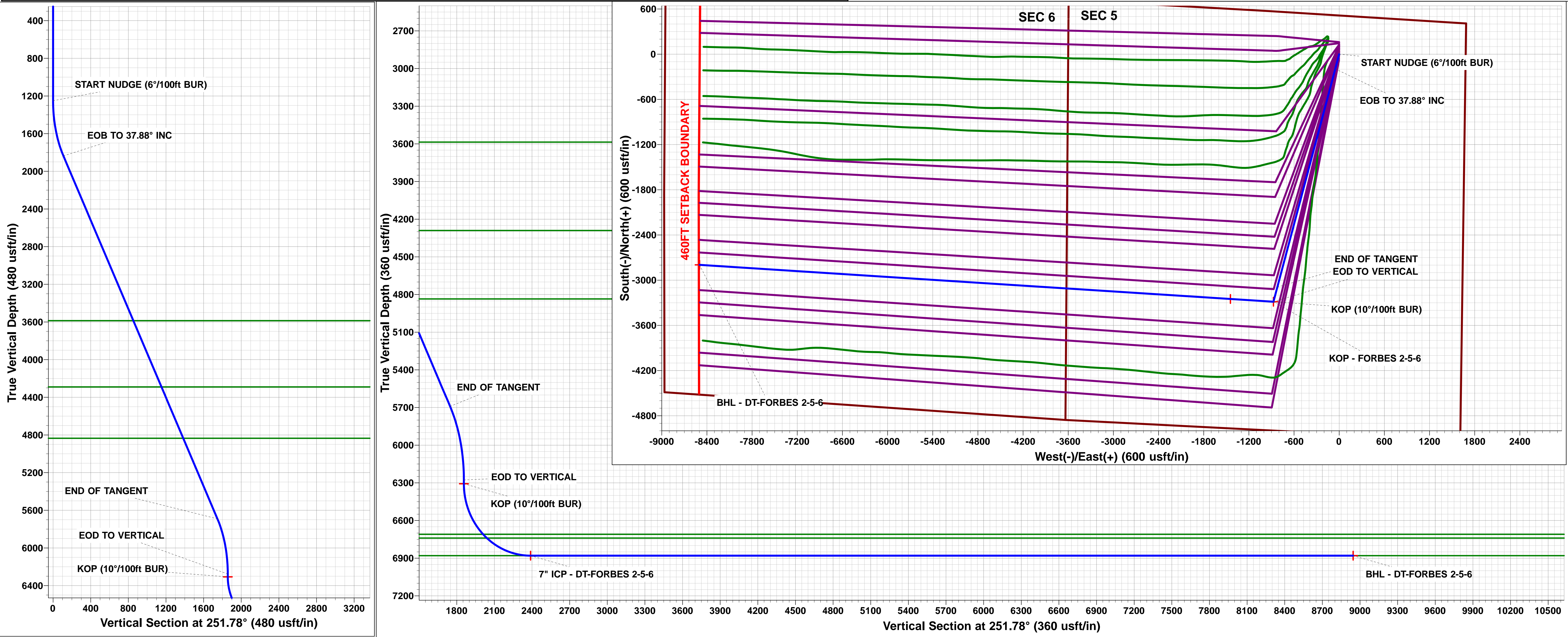
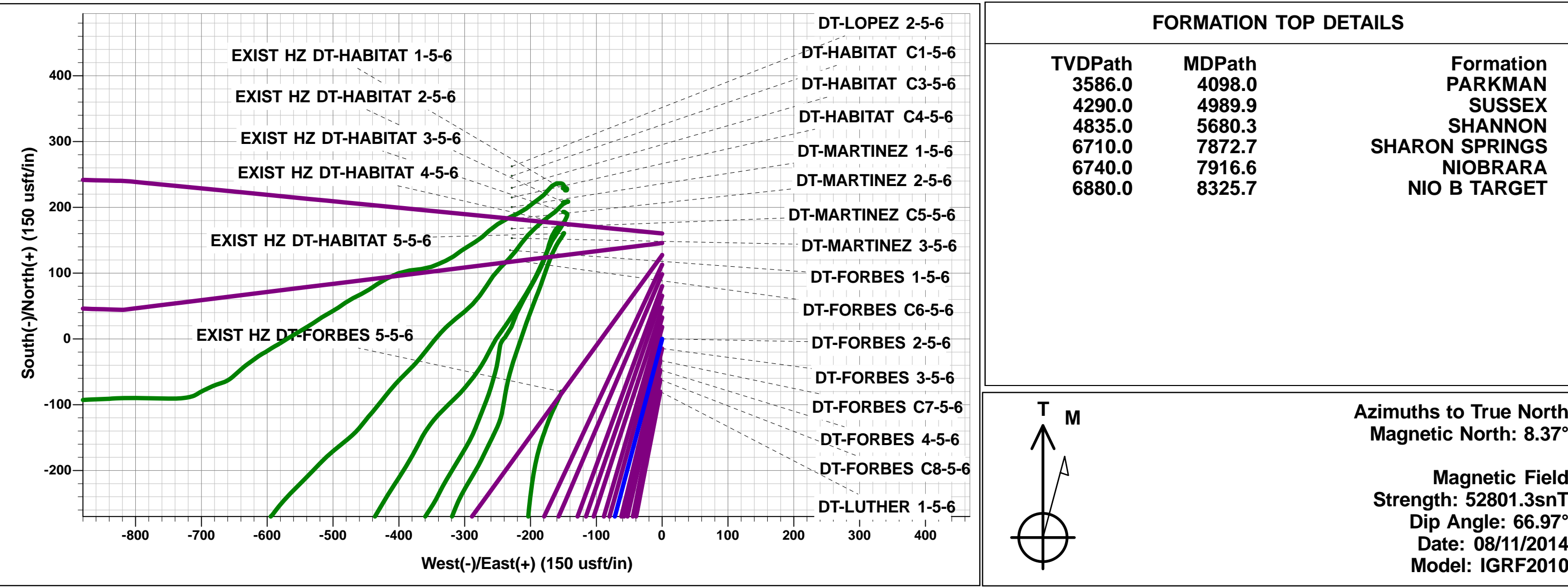




Project: WELD COUNTY, COLORADO (NAD 83)
Site: NW NE SEC. 5 T5N R65W 6th P.M.
Well: DT-FORBES 2-5-6
Wellbore: ORIGINAL WELLBORE
Design: PROPOSAL #2

ANNOTATIONS									
TVD	MD	Inc	Azi	+N/-S	+E/-W	VSect	Dep	Annotation	
1250.0	1250.0	0.00	0.00	0.0	0.0	0.0	0.0	START NUUDGE (6°/100ft BUR)	
1836.3	1881.3	37.88	194.88	-194.4	-51.7	109.9	201.2	EOB TO 37.88° INC	
5690.7	6764.4	37.88	194.88	-3092.0	-821.5	1746.9	3199.2	END OF TANGENT	
6277.0	7395.7	0.00	0.00	-3286.4	-873.2	1856.8	3400.4	EOD TO VERTICAL	
6307.0	7425.7	0.00	0.00	-3286.4	-873.2	1856.8	3400.4	KOP (10°/100ft BUR)	
6880.0	8325.7	90.00	273.68	-3249.6	-1445.0	2388.4	3973.4	7" ICP - DT-FORBES 2-5-6	
6880.0	15392.3	90.00	273.67	-2796.5	-8497.0	8945.4	11040.0	BHL - DT-FORBES 2-5-6	

WELLBORE TARGET DETAILS (LAT/LONG)					
Name	TVD	+N/-S	+E/-W	Latitude	Longitude
KOP - FORBES 2-5-6	6307.0	-3286.4	-873.2	40.426069	-104.686866
7" ICP - FORBES 2-5-6	6880.0	-3249.6	-1445.0	40.426170	-104.688920
BHL - FORBES 2-5-6	6880.0	-2796.5	-8497.0	40.427410	-104.714250



Planning Report



Database:	EDM 5000.1 Single User Db	Local Co-ordinate Reference:	Well DT-FORBES 2-5-6
Company:	EXTRACTION OIL & GAS	TVD Reference:	KB-EST @ 4657.0usft (SAV 802)
Project:	WELD COUNTY, COLORADO (NAD 83)	MD Reference:	KB-EST @ 4657.0usft (SAV 802)
Site:	NW NE SEC. 5 T5N R65W 6th P.M.	North Reference:	True
Well:	DT-FORBES 2-5-6	Survey Calculation Method:	Minimum Curvature
Wellbore:	ORIGINAL WELLBORE		
Design:	PROPOSAL #2		

Project	WELD COUNTY, COLORADO (NAD 83)		
Map System:	US State Plane 1983	System Datum:	Mean Sea Level
Geo Datum:	North American Datum 1983		
Map Zone:	Colorado Northern Zone		Using geodetic scale factor

Site		NW NE SEC. 5 T5N R65W 6th P.M.			
Site Position:		Northing:	1,402,409.16 usft	Latitude:	40.435150
From:	Lat/Long	Easting:	3,226,987.53 usft	Longitude:	-104.684560
Position Uncertainty:	0.0 usft	Slot Radius:	1.10000 ft	Grid Convergence:	0.53 °

Well	DT-FORBES 2-5-6					
Well Position	+N-S	-21.9 usft	Northing:	1,402,389.42 usfi	Latitude:	40.435090
	+E-W	231.1 usft	Easting:	3,227,218.77 usfi	Longitude:	-104.683730
Position Uncertainty		0.0 usft	Wellhead Elevation:	usfi	Ground Level:	4,642.1 usft

Wellbore	ORIGINAL WELLBORE				
Magnetics	Model Name	Sample Date	Declination (°)	Dip Angle (°)	Field Strength (nT)
	IGRF2010	08/11/2014	8.37	66.97	52,801

Design	PROPOSAL #2			
Audit Notes:				
Version:	Phase:	PROTOTYPE	Tie On Depth:	0.0
Vertical Section:	Depth From (TVD) (usft)	+N-S (usft)	+E-W (usft)	Direction (°)
	0.0	0.0	0.0	251.78

Plan Sections											
MD (usft)	Inc (°)	Azi (°)	Vertical Depth	SS (usft)	+N-S (usft)	+E-W (usft)	Dogleg Rate (°/100usf)	Build Rate (°/100usf)	Turn Rate (°/100usf)	TFO (°)	Target
0.0	0.00	0.00	0.0	-4,657.0	0.0	0.0	0.00	0.00	0.00	0.00	
1,250.0	0.00	0.00	1,250.0	-3,407.0	0.0	0.0	0.00	0.00	0.00	0.00	
1,881.3	37.88	194.88	1,836.3	-2,820.7	-194.4	-51.7	6.00	6.00	0.00	194.88	
6,764.4	37.88	194.88	5,690.7	1,033.7	-3,092.0	-821.5	0.00	0.00	0.00	0.00	
7,395.7	0.00	0.00	6,277.0	1,620.0	-3,286.4	-873.2	6.00	-6.00	0.00	180.00	
7,425.7	0.00	0.00	6,307.0	1,650.0	-3,286.4	-873.2	0.00	0.00	0.00	0.00	KOP - FORBES 2-5
8,325.7	90.00	273.68	6,880.0	2,223.0	-3,249.6	-1,445.0	10.00	10.00	-9.59	273.68	7" ICP - FORBES 2
15,392.3	90.00	273.67	6,880.0	2,223.0	-2,796.5	-8,497.0	0.00	0.00	0.00	-26.58	BHL - FORBES 2-5

Planning Report



Database:	EDM 5000.1 Single User Db	Local Co-ordinate Reference:	Well DT-FORBES 2-5-6
Company:	EXTRACTION OIL & GAS	TVD Reference:	KB-EST @ 4657.0usft (SAV 802)
Project:	WELD COUNTY, COLORADO (NAD 83)	MD Reference:	KB-EST @ 4657.0usft (SAV 802)
Site:	NW NE SEC. 5 T5N R65W 6th P.M.	North Reference:	True
Well:	DT-FORBES 2-5-6	Survey Calculation Method:	Minimum Curvature
Wellbore:	ORIGINAL WELLBORE		
Design:	PROPOSAL #2		

Planned Survey

MD (usft)	Inc (°)	Azi (°)	TVD (usft)	SS (usft)	+N/-S (usft)	+E/-W (usft)	Vertical Section (usft)	Dogleg Rate (°/100usft)	Build Rate (°/100usft)	Turn Rate (°/100usft)
0.0	0.00	0.00	0.0	4,657.00	0.0	0.0	0.0	0.00	0.00	0.00
100.0	0.00	0.00	100.0	4,557.00	0.0	0.0	0.0	0.00	0.00	0.00
200.0	0.00	0.00	200.0	4,457.00	0.0	0.0	0.0	0.00	0.00	0.00
300.0	0.00	0.00	300.0	4,357.00	0.0	0.0	0.0	0.00	0.00	0.00
400.0	0.00	0.00	400.0	4,257.00	0.0	0.0	0.0	0.00	0.00	0.00
500.0	0.00	0.00	500.0	4,157.00	0.0	0.0	0.0	0.00	0.00	0.00
600.0	0.00	0.00	600.0	4,057.00	0.0	0.0	0.0	0.00	0.00	0.00
700.0	0.00	0.00	700.0	3,957.00	0.0	0.0	0.0	0.00	0.00	0.00
800.0	0.00	0.00	800.0	3,857.00	0.0	0.0	0.0	0.00	0.00	0.00
900.0	0.00	0.00	900.0	3,757.00	0.0	0.0	0.0	0.00	0.00	0.00
1,000.0	0.00	0.00	1,000.0	3,657.00	0.0	0.0	0.0	0.00	0.00	0.00
1,100.0	0.00	0.00	1,100.0	3,557.00	0.0	0.0	0.0	0.00	0.00	0.00
1,200.0	0.00	0.00	1,200.0	3,457.00	0.0	0.0	0.0	0.00	0.00	0.00
START NUDGE (6°/100ft BUR)										
1,250.0	0.00	0.00	1,250.0	3,407.00	0.0	0.0	0.0	0.00	0.00	0.00
1,300.0	3.00	194.88	1,300.0	3,357.02	-1.3	-0.3	0.7	6.00	6.00	0.00
1,400.0	9.00	194.88	1,399.4	3,257.62	-11.4	-3.0	6.4	6.00	6.00	0.00
1,500.0	15.00	194.88	1,497.2	3,159.85	-31.4	-8.4	17.8	6.00	6.00	0.00
1,600.0	21.00	194.88	1,592.2	3,064.78	-61.3	-16.3	34.6	6.00	6.00	0.00
1,700.0	27.00	194.88	1,683.5	2,973.47	-100.6	-26.7	56.8	6.00	6.00	0.00
1,800.0	33.00	194.88	1,770.1	2,886.91	-148.9	-39.6	84.1	6.00	6.00	0.00
EOB TO 37.88° INC										
1,881.3	37.88	194.88	1,836.3	2,820.69	-194.4	-51.7	109.9	6.00	6.00	0.00
1,900.0	37.88	194.88	1,851.1	2,805.93	-205.5	-54.6	116.1	0.00	0.00	0.00
2,000.0	37.88	194.88	1,930.0	2,727.00	-264.9	-70.4	149.7	0.00	0.00	0.00
2,100.0	37.88	194.88	2,008.9	2,648.06	-324.2	-86.1	183.2	0.00	0.00	0.00
2,200.0	37.88	194.88	2,087.9	2,569.13	-383.5	-101.9	216.7	0.00	0.00	0.00
2,300.0	37.88	194.88	2,166.8	2,490.20	-442.9	-117.7	250.2	0.00	0.00	0.00
2,400.0	37.88	194.88	2,245.7	2,411.26	-502.2	-133.4	283.8	0.00	0.00	0.00
2,500.0	37.88	194.88	2,324.7	2,332.33	-561.6	-149.2	317.3	0.00	0.00	0.00
2,600.0	37.88	194.88	2,403.6	2,253.40	-620.9	-165.0	350.8	0.00	0.00	0.00
2,700.0	37.88	194.88	2,482.5	2,174.46	-680.2	-180.7	384.3	0.00	0.00	0.00
2,800.0	37.88	194.88	2,561.5	2,095.53	-739.6	-196.5	417.9	0.00	0.00	0.00
2,900.0	37.88	194.88	2,640.4	2,016.60	-798.9	-212.3	451.4	0.00	0.00	0.00
3,000.0	37.88	194.88	2,719.3	1,937.66	-858.2	-228.0	484.9	0.00	0.00	0.00
3,100.0	37.88	194.88	2,798.3	1,858.73	-917.6	-243.8	518.4	0.00	0.00	0.00
3,200.0	37.88	194.88	2,877.2	1,779.80	-976.9	-259.6	552.0	0.00	0.00	0.00
3,300.0	37.88	194.88	2,956.1	1,700.86	-1,036.3	-275.3	585.5	0.00	0.00	0.00
3,400.0	37.88	194.88	3,035.1	1,621.93	-1,095.6	-291.1	619.0	0.00	0.00	0.00
3,500.0	37.88	194.88	3,114.0	1,543.00	-1,154.9	-306.9	652.5	0.00	0.00	0.00
3,600.0	37.88	194.88	3,192.9	1,464.06	-1,214.3	-322.6	686.1	0.00	0.00	0.00
3,700.0	37.88	194.88	3,271.9	1,385.13	-1,273.6	-338.4	719.6	0.00	0.00	0.00
3,800.0	37.88	194.88	3,350.8	1,306.20	-1,333.0	-354.2	753.1	0.00	0.00	0.00
3,900.0	37.88	194.88	3,429.7	1,227.26	-1,392.3	-369.9	786.6	0.00	0.00	0.00
4,000.0	37.88	194.88	3,508.7	1,148.33	-1,451.6	-385.7	820.2	0.00	0.00	0.00
PARKMAN										
4,098.0	37.88	194.88	3,586.0	1,071.00	-1,509.8	-401.1	853.0	0.00	0.00	0.00
4,100.0	37.88	194.88	3,587.6	1,069.40	-1,511.0	-401.5	853.7	0.00	0.00	0.00
4,200.0	37.88	194.88	3,666.5	990.46	-1,570.3	-417.2	887.2	0.00	0.00	0.00
4,300.0	37.88	194.88	3,745.5	911.53	-1,629.6	-433.0	920.7	0.00	0.00	0.00
4,400.0	37.88	194.88	3,824.4	832.60	-1,689.0	-448.8	954.3	0.00	0.00	0.00
4,500.0	37.88	194.88	3,903.3	753.66	-1,748.3	-464.5	987.8	0.00	0.00	0.00
4,600.0	37.88	194.88	3,982.3	674.73	-1,807.7	-480.3	1,021.3	0.00	0.00	0.00

Planning Report



Database:	EDM 5000.1 Single User Db	Local Co-ordinate Reference:	Well DT-FORBES 2-5-6
Company:	EXTRACTION OIL & GAS	TVD Reference:	KB-EST @ 4657.0usft (SAV 802)
Project:	WELD COUNTY, COLORADO (NAD 83)	MD Reference:	KB-EST @ 4657.0usft (SAV 802)
Site:	NW NE SEC. 5 T5N R65W 6th P.M.	North Reference:	True
Well:	DT-FORBES 2-5-6	Survey Calculation Method:	Minimum Curvature
Wellbore:	ORIGINAL WELLBORE		
Design:	PROPOSAL #2		

Planned Survey

MD (usft)	Inc (°)	Azi (°)	TVD (usft)	SS (usft)	+N/-S (usft)	+E/-W (usft)	Vertical Section (usft)	Dogleg Rate (°/100usft)	Build Rate (°/100usft)	Turn Rate (°/100usft)
4,700.0	37.88	194.88	4,061.2	595.80	-1,867.0	-496.1	1,054.8	0.00	0.00	0.00
4,800.0	37.88	194.88	4,140.1	516.86	-1,926.3	-511.8	1,088.4	0.00	0.00	0.00
4,900.0	37.88	194.88	4,219.1	437.93	-1,985.7	-527.6	1,121.9	0.00	0.00	0.00
SUSSEX										
4,989.9	37.88	194.88	4,290.0	367.00	-2,039.0	-541.8	1,152.0	0.00	0.00	0.00
5,000.0	37.88	194.88	4,298.0	359.00	-2,045.0	-543.4	1,155.4	0.00	0.00	0.00
5,100.0	37.88	194.88	4,376.9	280.06	-2,104.3	-559.1	1,188.9	0.00	0.00	0.00
5,200.0	37.88	194.88	4,455.9	201.13	-2,163.7	-574.9	1,222.5	0.00	0.00	0.00
5,300.0	37.88	194.88	4,534.8	122.20	-2,223.0	-590.6	1,256.0	0.00	0.00	0.00
5,400.0	37.88	194.88	4,613.7	43.26	-2,282.4	-606.4	1,289.5	0.00	0.00	0.00
5,500.0	37.88	194.88	4,692.7	-35.67	-2,341.7	-622.2	1,323.0	0.00	0.00	0.00
5,600.0	37.88	194.88	4,771.6	-114.60	-2,401.0	-637.9	1,356.6	0.00	0.00	0.00
SHANNON										
5,680.3	37.88	194.88	4,835.0	-178.00	-2,448.7	-650.6	1,383.5	0.00	0.00	0.00
5,700.0	37.88	194.88	4,850.5	-193.54	-2,460.4	-653.7	1,390.1	0.00	0.00	0.00
5,800.0	37.88	194.88	4,929.5	-272.47	-2,519.7	-669.5	1,423.6	0.00	0.00	0.00
5,900.0	37.88	194.88	5,008.4	-351.40	-2,579.0	-685.2	1,457.1	0.00	0.00	0.00
6,000.0	37.88	194.88	5,087.3	-430.34	-2,638.4	-701.0	1,490.7	0.00	0.00	0.00
6,100.0	37.88	194.88	5,166.3	-509.27	-2,697.7	-716.8	1,524.2	0.00	0.00	0.00
6,200.0	37.88	194.88	5,245.2	-588.20	-2,757.1	-732.5	1,557.7	0.00	0.00	0.00
6,300.0	37.88	194.88	5,324.1	-667.14	-2,816.4	-748.3	1,591.2	0.00	0.00	0.00
6,400.0	37.88	194.88	5,403.1	-746.07	-2,875.7	-764.1	1,624.8	0.00	0.00	0.00
6,500.0	37.88	194.88	5,482.0	-825.00	-2,935.1	-779.8	1,658.3	0.00	0.00	0.00
6,600.0	37.88	194.88	5,560.9	-903.94	-2,994.4	-795.6	1,691.8	0.00	0.00	0.00
6,700.0	37.88	194.88	5,639.9	-982.87	-3,053.7	-811.4	1,725.4	0.00	0.00	0.00
END OF TANGENT										
6,764.4	37.88	194.88	5,690.7	-1,033.70	-3,092.0	-821.5	1,746.9	0.00	0.00	0.00
6,800.0	35.74	194.88	5,719.2	-1,062.21	-3,112.6	-827.0	1,758.6	6.00	-6.00	0.00
6,900.0	29.74	194.88	5,803.3	-1,146.28	-3,164.8	-840.9	1,788.1	6.00	-6.00	0.00
7,000.0	23.74	194.88	5,892.5	-1,235.54	-3,208.3	-852.4	1,812.7	6.00	-6.00	0.00
7,100.0	17.74	194.88	5,986.0	-1,329.02	-3,242.5	-861.5	1,832.0	6.00	-6.00	0.00
7,200.0	11.74	194.88	6,082.7	-1,425.68	-3,267.1	-868.1	1,845.9	6.00	-6.00	0.00
7,300.0	5.74	194.88	6,181.5	-1,524.48	-3,281.8	-872.0	1,854.2	6.00	-6.00	0.00
EOD TO VERTICAL										
7,395.7	0.00	0.00	6,277.0	-1,620.02	-3,286.4	-873.2	1,856.8	6.00	-6.00	0.00
7,400.0	0.00	0.00	6,281.3	-1,624.32	-3,286.4	-873.2	1,856.8	0.00	0.00	0.00
KOP (10°/100ft BUR)										
7,425.7	0.00	0.00	6,307.0	-1,650.02	-3,286.4	-873.2	1,856.8	0.00	0.00	0.00
7,500.0	7.43	273.68	6,381.1	-1,724.11	-3,286.1	-878.0	1,861.3	10.00	10.00	0.00
7,600.0	17.43	273.68	6,478.6	-1,821.64	-3,284.7	-899.4	1,881.2	10.00	10.00	0.00
7,700.0	27.43	273.68	6,571.0	-1,913.96	-3,282.3	-937.5	1,916.6	10.00	10.00	0.00
7,800.0	37.43	273.68	6,655.3	-1,998.26	-3,278.8	-990.9	1,966.3	10.00	10.00	0.00
SHARON SPRINGS										
7,872.7	44.69	273.68	6,710.0	-2,053.00	-3,275.8	-1,038.5	2,010.5	10.00	10.00	0.00
7,900.0	47.43	273.68	6,729.0	-2,071.98	-3,274.5	-1,058.2	2,028.8	10.00	10.00	0.00
NIOBRARA										
7,916.6	49.08	273.68	6,740.0	-2,083.00	-3,273.7	-1,070.5	2,040.2	10.00	10.00	0.00
8,000.0	57.43	273.68	6,789.9	-2,132.87	-3,269.4	-1,137.2	2,102.2	10.00	10.00	0.00
8,100.0	67.43	273.68	6,836.1	-2,179.10	-3,263.7	-1,225.5	2,184.4	10.00	10.00	0.00
8,200.0	77.43	273.68	6,866.3	-2,209.26	-3,257.6	-1,320.5	2,272.7	10.00	10.00	0.00
8,300.0	87.43	273.68	6,879.4	-2,222.42	-3,251.3	-1,419.3	2,364.6	10.00	10.00	0.00
7" ICP - DT-FORBES 2-5-6 - NIO B TARGET										
8,325.7	90.00	273.68	6,880.0	-2,223.00	-3,249.6	-1,445.0	2,388.4	10.00	10.00	0.00

Planning Report



Database:	EDM 5000.1 Single User Db	Local Co-ordinate Reference:	Well DT-FORBES 2-5-6
Company:	EXTRACTION OIL & GAS	TVD Reference:	KB-EST @ 4657.0usft (SAV 802)
Project:	WELD COUNTY, COLORADO (NAD 83)	MD Reference:	KB-EST @ 4657.0usft (SAV 802)
Site:	NW NE SEC. 5 T5N R65W 6th P.M.	North Reference:	True
Well:	DT-FORBES 2-5-6	Survey Calculation Method:	Minimum Curvature
Wellbore:	ORIGINAL WELLBORE		
Design:	PROPOSAL #2		

Planned Survey										
MD (usft)	Inc (°)	Azi (°)	TVD (usft)	SS (usft)	+N/-S (usft)	+E/-W (usft)	Vertical Section (usft)	Dogleg Rate (°/100usft)	Build Rate (°/100usft)	Turn Rate (°/100usft)
8,400.0	90.00	273.68	6,880.0	-2,223.00	-3,244.9	-1,519.1	2,457.4	0.00	0.00	0.00
8,500.0	90.00	273.68	6,880.0	-2,223.01	-3,238.4	-1,618.9	2,550.1	0.00	0.00	0.00
8,600.0	90.00	273.68	6,880.0	-2,223.02	-3,232.0	-1,718.7	2,642.9	0.00	0.00	0.00
8,700.0	90.00	273.68	6,880.0	-2,223.02	-3,225.6	-1,818.5	2,735.7	0.00	0.00	0.00
8,800.0	90.00	273.68	6,880.0	-2,223.03	-3,219.2	-1,918.3	2,828.5	0.00	0.00	0.00
8,900.0	90.00	273.68	6,880.0	-2,223.03	-3,212.8	-2,018.1	2,921.3	0.00	0.00	0.00
9,000.0	90.00	273.68	6,880.0	-2,223.04	-3,206.4	-2,117.9	3,014.1	0.00	0.00	0.00
9,100.0	90.00	273.68	6,880.0	-2,223.04	-3,199.9	-2,217.7	3,106.9	0.00	0.00	0.00
9,200.0	90.00	273.68	6,880.0	-2,223.05	-3,193.5	-2,317.5	3,199.6	0.00	0.00	0.00
9,300.0	90.00	273.68	6,880.1	-2,223.05	-3,187.1	-2,417.2	3,292.4	0.00	0.00	0.00
9,400.0	90.00	273.68	6,880.1	-2,223.06	-3,180.7	-2,517.0	3,385.2	0.00	0.00	0.00
9,500.0	90.00	273.68	6,880.1	-2,223.06	-3,174.3	-2,616.8	3,478.0	0.00	0.00	0.00
9,600.0	90.00	273.68	6,880.1	-2,223.07	-3,167.9	-2,716.6	3,570.8	0.00	0.00	0.00
9,700.0	90.00	273.68	6,880.1	-2,223.07	-3,161.5	-2,816.4	3,663.6	0.00	0.00	0.00
9,800.0	90.00	273.68	6,880.1	-2,223.08	-3,155.0	-2,916.2	3,756.4	0.00	0.00	0.00
9,900.0	90.00	273.68	6,880.1	-2,223.08	-3,148.6	-3,016.0	3,849.2	0.00	0.00	0.00
10,000.0	90.00	273.68	6,880.1	-2,223.08	-3,142.2	-3,115.8	3,941.9	0.00	0.00	0.00
10,100.0	90.00	273.68	6,880.1	-2,223.09	-3,135.8	-3,215.6	4,034.7	0.00	0.00	0.00
10,200.0	90.00	273.68	6,880.1	-2,223.09	-3,129.4	-3,315.4	4,127.5	0.00	0.00	0.00
10,300.0	90.00	273.68	6,880.1	-2,223.09	-3,123.0	-3,415.2	4,220.3	0.00	0.00	0.00
10,400.0	90.00	273.68	6,880.1	-2,223.10	-3,116.6	-3,515.0	4,313.1	0.00	0.00	0.00
10,500.0	90.00	273.68	6,880.1	-2,223.10	-3,110.1	-3,614.8	4,405.9	0.00	0.00	0.00
10,600.0	90.00	273.68	6,880.1	-2,223.10	-3,103.7	-3,714.6	4,498.7	0.00	0.00	0.00
10,700.0	90.00	273.68	6,880.1	-2,223.10	-3,097.3	-3,814.4	4,591.5	0.00	0.00	0.00
10,800.0	90.00	273.68	6,880.1	-2,223.10	-3,090.9	-3,914.2	4,684.2	0.00	0.00	0.00
10,900.0	90.00	273.68	6,880.1	-2,223.11	-3,084.5	-4,014.0	4,777.0	0.00	0.00	0.00
11,000.0	90.00	273.68	6,880.1	-2,223.11	-3,078.1	-4,113.7	4,869.8	0.00	0.00	0.00
11,100.0	90.00	273.68	6,880.1	-2,223.11	-3,071.7	-4,213.5	4,962.6	0.00	0.00	0.00
11,200.0	90.00	273.68	6,880.1	-2,223.11	-3,065.2	-4,313.3	5,055.4	0.00	0.00	0.00
11,300.0	90.00	273.68	6,880.1	-2,223.11	-3,058.8	-4,413.1	5,148.2	0.00	0.00	0.00
11,400.0	90.00	273.68	6,880.1	-2,223.11	-3,052.4	-4,512.9	5,241.0	0.00	0.00	0.00
11,500.0	90.00	273.68	6,880.1	-2,223.11	-3,046.0	-4,612.7	5,333.8	0.00	0.00	0.00
11,600.0	90.00	273.68	6,880.1	-2,223.11	-3,039.6	-4,712.5	5,426.5	0.00	0.00	0.00
11,700.0	90.00	273.68	6,880.1	-2,223.11	-3,033.2	-4,812.3	5,519.3	0.00	0.00	0.00
11,800.0	90.00	273.68	6,880.1	-2,223.11	-3,026.8	-4,912.1	5,612.1	0.00	0.00	0.00
11,900.0	90.00	273.68	6,880.1	-2,223.11	-3,020.4	-5,011.9	5,704.9	0.00	0.00	0.00
12,000.0	90.00	273.68	6,880.1	-2,223.11	-3,013.9	-5,111.7	5,797.7	0.00	0.00	0.00
12,100.0	90.00	273.68	6,880.1	-2,223.11	-3,007.5	-5,211.5	5,890.5	0.00	0.00	0.00
12,200.0	90.00	273.68	6,880.1	-2,223.11	-3,001.1	-5,311.3	5,983.3	0.00	0.00	0.00
12,300.0	90.00	273.68	6,880.1	-2,223.11	-2,994.7	-5,411.1	6,076.1	0.00	0.00	0.00
12,400.0	90.00	273.68	6,880.1	-2,223.11	-2,988.3	-5,510.9	6,168.8	0.00	0.00	0.00
12,500.0	90.00	273.68	6,880.1	-2,223.11	-2,981.9	-5,610.7	6,261.6	0.00	0.00	0.00
12,600.0	90.00	273.68	6,880.1	-2,223.11	-2,975.5	-5,710.5	6,354.4	0.00	0.00	0.00
12,700.0	90.00	273.68	6,880.1	-2,223.11	-2,969.1	-5,810.2	6,447.2	0.00	0.00	0.00
12,800.0	90.00	273.68	6,880.1	-2,223.11	-2,962.6	-5,910.0	6,540.0	0.00	0.00	0.00
12,900.0	90.00	273.68	6,880.1	-2,223.11	-2,956.2	-6,009.8	6,632.8	0.00	0.00	0.00
13,000.0	90.00	273.68	6,880.1	-2,223.10	-2,949.8	-6,109.6	6,725.6	0.00	0.00	0.00
13,100.0	90.00	273.68	6,880.1	-2,223.10	-2,943.4	-6,209.4	6,818.4	0.00	0.00	0.00
13,200.0	90.00	273.68	6,880.1	-2,223.10	-2,937.0	-6,309.2	6,911.1	0.00	0.00	0.00
13,300.0	90.00	273.68	6,880.1	-2,223.10	-2,930.6	-6,409.0	7,003.9	0.00	0.00	0.00
13,400.0	90.00	273.68	6,880.1	-2,223.09	-2,924.2	-6,508.8	7,096.7	0.00	0.00	0.00
13,500.0	90.00	273.68	6,880.1	-2,223.09	-2,917.8	-6,608.6	7,189.5	0.00	0.00	0.00
13,600.0	90.00	273.68	6,880.1	-2,223.09	-2,911.3	-6,708.4	7,282.3	0.00	0.00	0.00
13,700.0	90.00	273.68	6,880.1	-2,223.08	-2,904.9	-6,808.2	7,375.1	0.00	0.00	0.00

Database:	EDM 5000.1 Single User Db	Local Co-ordinate Reference:	Well DT-FORBES 2-5-6
Company:	EXTRACTION OIL & GAS	TVD Reference:	KB-EST @ 4657.0usft (SAV 802)
Project:	WELD COUNTY, COLORADO (NAD 83)	MD Reference:	KB-EST @ 4657.0usft (SAV 802)
Site:	NW NE SEC. 5 T5N R65W 6th P.M.	North Reference:	True
Well:	DT-FORBES 2-5-6	Survey Calculation Method:	Minimum Curvature
Wellbore:	ORIGINAL WELLBORE		
Design:	PROPOSAL #2		

Planned Survey

MD (usft)	Inc (°)	Azi (°)	TVD (usft)	SS (usft)	+N/-S (usft)	+E/-W (usft)	Vertical Section (usft)	Dogleg Rate (°/100usft)	Build Rate (°/100usft)	Turn Rate (°/100usft)
13,800.0	90.00	273.68	6,880.1	-2,223.08	-2,898.5	-6,908.0	7,467.9	0.00	0.00	0.00
13,900.0	90.00	273.68	6,880.1	-2,223.08	-2,892.1	-7,007.8	7,560.7	0.00	0.00	0.00
14,000.0	90.00	273.68	6,880.1	-2,223.07	-2,885.7	-7,107.6	7,653.5	0.00	0.00	0.00
14,100.0	90.00	273.68	6,880.1	-2,223.07	-2,879.3	-7,207.4	7,746.2	0.00	0.00	0.00
14,200.0	90.00	273.68	6,880.1	-2,223.06	-2,872.9	-7,307.2	7,839.0	0.00	0.00	0.00
14,300.0	90.00	273.68	6,880.1	-2,223.06	-2,866.5	-7,407.0	7,931.8	0.00	0.00	0.00
14,400.0	90.00	273.68	6,880.1	-2,223.06	-2,860.1	-7,506.8	8,024.6	0.00	0.00	0.00
14,500.0	90.00	273.68	6,880.1	-2,223.05	-2,853.7	-7,606.5	8,117.4	0.00	0.00	0.00
14,600.0	90.00	273.68	6,880.0	-2,223.05	-2,847.2	-7,706.3	8,210.2	0.00	0.00	0.00
14,700.0	90.00	273.68	6,880.0	-2,223.04	-2,840.8	-7,806.1	8,303.0	0.00	0.00	0.00
14,800.0	90.00	273.68	6,880.0	-2,223.04	-2,834.4	-7,905.9	8,395.8	0.00	0.00	0.00
14,900.0	90.00	273.68	6,880.0	-2,223.03	-2,828.0	-8,005.7	8,488.6	0.00	0.00	0.00
15,000.0	90.00	273.68	6,880.0	-2,223.02	-2,821.6	-8,105.5	8,581.3	0.00	0.00	0.00
15,100.0	90.00	273.68	6,880.0	-2,223.02	-2,815.2	-8,205.3	8,674.1	0.00	0.00	0.00
15,200.0	90.00	273.68	6,880.0	-2,223.01	-2,808.8	-8,305.1	8,766.9	0.00	0.00	0.00
15,300.0	90.00	273.67	6,880.0	-2,223.01	-2,802.4	-8,404.9	8,859.7	0.00	0.00	0.00
BHL - DT-FORBES 2-5-6										
15,392.3	90.00	273.67	6,880.0	-2,223.00	-2,796.5	-8,497.0	8,945.4	0.00	0.00	0.00

Formations

MD (usft)	TVD (usft)	Name	Lithology	Dip (°)	Dip Direction (°)
4,098.0	3,586.0	PARKMAN			
4,989.9	4,290.0	SUSSEX			
5,680.3	4,835.0	SHANNON			
7,872.7	6,710.0	SHARON SPRINGS			
7,916.6	6,740.0	NIOBRARA			
8,325.7	6,880.0	NIO B TARGET			

Plan Annotations

MD (usft)	TVD (usft)	Local Coordinates		Comment
		+N/-S (usft)	+E/-W (usft)	
1,250.0	1,250.0	0.0	0.0	START NUDGE (6°/100ft BUR)
1,881.3	1,836.3	-194.4	-51.7	EOB TO 37.88° INC
6,764.4	5,690.7	-3,092.0	-821.5	END OF TANGENT
7,395.7	6,277.0	-3,286.4	-873.2	EOD TO VERTICAL
7,425.7	6,307.0	-3,286.4	-873.2	KOP (10°/100ft BUR)
8,325.7	6,880.0	-3,249.6	-1,445.0	7" ICP - DT-FORBES 2-5-6
15,392.3	6,880.0	-2,796.5	-8,497.0	BHL - DT-FORBES 2-5-6