

WELL LOCATION DATA:
 LATITUDE: 40.43509°N
 LONGITUDE: 104.68373°W
 ELEVATION: 4640'
 PDOP: 1.5
 OPERATOR: C. HOLMES
 SURFACE USE: INDUSTRIAL
 PROPOSED GROUND ELEVATION: 4639.7'

NEAREST CULTURAL ITEMS:
 BUILDING: 595'
 BUILDING UNIT: 761'
 HIGH OCCUPANCY BUILDING UNIT: 5280'+
 DESIGNATED OUTSIDE ACTIVITY AREA: 5280'+
 PUBLIC ROAD: 917'
 ABOVE GROUND UTILITY: 906'
 RAILROAD: 1520'
 PROPERTY LINE: 317'

REVISIONS	DATE
FIRST SUBMITTAL	9/5/14
SECOND SUBMITTAL	10/14/14
THIRD SUBMITTAL	11/19/14

LEGEND

- COMPUTED FROM GLO RECORDS
- ALICUT CORNER
- A.C. ALUMINUM CAP
- BH BOTTOM HOLE
- R.B. RANGE BOX
- PROPOSED WELL

LAND SURVEYOR'S CERTIFICATION

LAMP, RYNEARSON & ASSOCIATES, INC., OF FT. COLLINS, COLORADO HAS, IN ACCORDANCE WITH A REQUEST FROM DUSTIN DYK FOR EXTRACTION OIL AND GAS, DETERMINED THE SURFACE LOCATION OF THE WELL DESIGNATED AS DT-FORBES 2-5-6 TO BE 510' FROM THE NORTH LINE AND 1684' FROM THE EAST LINE OF SECTION 5, TOWNSHIP 5 NORTH, RANGE 65 WEST OF THE 6TH P.M., WELD COUNTY, COLORADO.



FRANK KOHL
 COLORADO PLS 37067
 DATE OF SURVEY: 8/19/2010 (SECTION CONTROL)
 DATE OF SURVEY: 10/13/2014 (WELL LOCATION)



0 1000
 SCALE: 1"= 1000'
 U.S. SURVEY FEET

NOTES:

- DISTANCES ARE MEASURED PERPENDICULAR TO NEAREST SECTION LINE AND ARE SHOWN ON THE SAME SIDE OF THE SECTION LINE WHERE THE WELL IS LOCATED.
- THIS MAP DOES NOT REPRESENT A MONUMENTED BOUNDARY SURVEY. SIXTEENTH CORNER LOCATIONS ARE COMPUTED, UNLESS OTHERWISE NOTED.
- BOTTOM HOLE LOCATIONS AND HORIZONTAL COMPLETION ZONE PROVIDED BY OTHERS.

BASIS OF BEARING:

THE NORTH LINE OF THE NORTHEAST QUARTER OF SECTION 5-T5N-R65W BEARS S85°52'57"E BETWEEN THE NORTH QUARTER CORNER OF SECTION 5 MONUMENTED WITH 3 1/4" A.C. IN R.B. STAMPED "PLS 28259" AND THE NORTHEAST CORNER OF SECTION 5 MONUMENTED WITH A 2 1/2" A.C. IN R.B. STAMPED "LS 17500" BASED ON THE COLORADO NORTH 0501 STATE PLANE COORDINATE SYSTEM.

ELEVATIONS ARE BASED ON NAVD 88, AS OBSERVED FROM GPS OBSERVATIONS

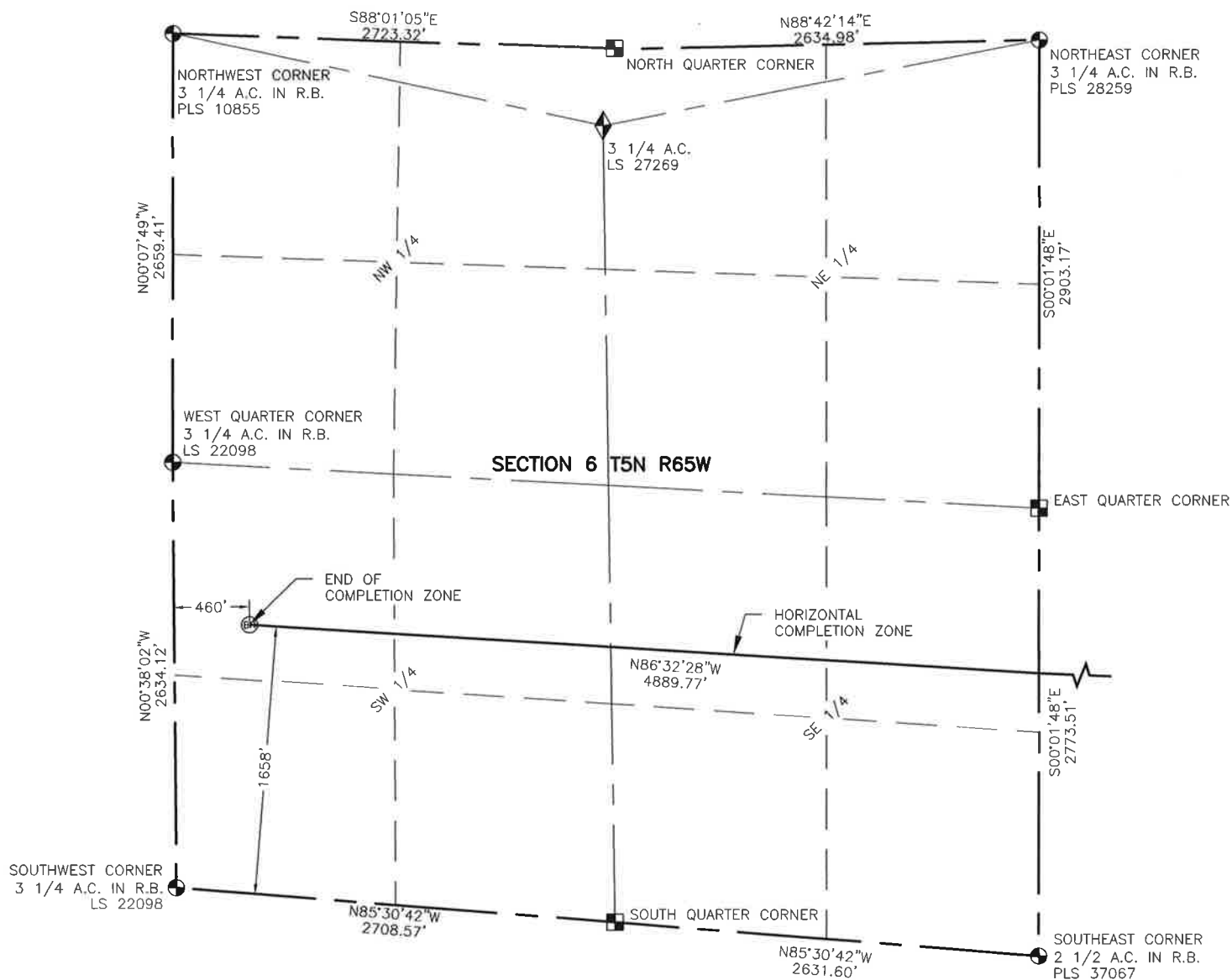


**LAMP RYNEARSON
& ASSOCIATES**

4715 Innovation Drive 970.226.0342 | P
 Fort Collins, CO 80525 970.226.0879 | F
 www.LRA-inc.com

Proposed Well Location Exhibit
 DT-Forbes 2-5-6
 1 of 2

drawn by	date	cogcc id	project - task number	book and page	surface - location
SSZ	11/19/14	432599	0211012.02-502	MRI02, 1	NW/4 NE/4 SEC 5 T5N R65W
path\filename P:_Engineering\0211012.02\DRAWINGS\EXHIBITS\0211012-02EXWPO.dwg					



NOTES:

- DISTANCES ARE MEASURED PERPENDICULAR TO NEAREST SECTION LINE AND ARE SHOWN ON THE SAME SIDE OF THE SECTION LINE WHERE THE WELL IS LOCATED.
- THIS MAP DOES NOT REPRESENT A MONUMENTED BOUNDARY SURVEY. SIXTEENTH CORNER LOCATIONS ARE COMPUTED, UNLESS OTHERWISE NOTED.
- BOTTOM HOLE LOCATIONS AND HORIZONTAL COMPLETION ZONE PROVIDED BY OTHERS.

LEGEND

- ALIQUOT CORNER
- BOTTOM HOLE
- COMPUTED FROM GLO RECORDS
- A.C. ALUMINUM CAP
- R.B. RANGE BOX
- UNION COLONY CORNER



0 1000
SCALE: 1"= 1000'
U.S. SURVEY FEET



**LAMP RYNEARSON
& ASSOCIATES**

4715 Innovation Drive 970.226.0342 | P
Fort Collins, CO 80525 970.226.0879 | F
www.LRA-Inc.com

Proposed Well Location Exhibit
DT-Forbes 2-5-6
2 of 2

drawn by

SSZ

date

11/19/14

cogcc id

432599

project - task number

0211012.02-502

book and page

MRI02, 1

surface - location

NW/4 NE/4 SEC 5 T5N R65W

path\filename P:_Engineering\0211012.02\DRAWINGS\EXHIBITS\0211012-02EXWPOA.dwg