

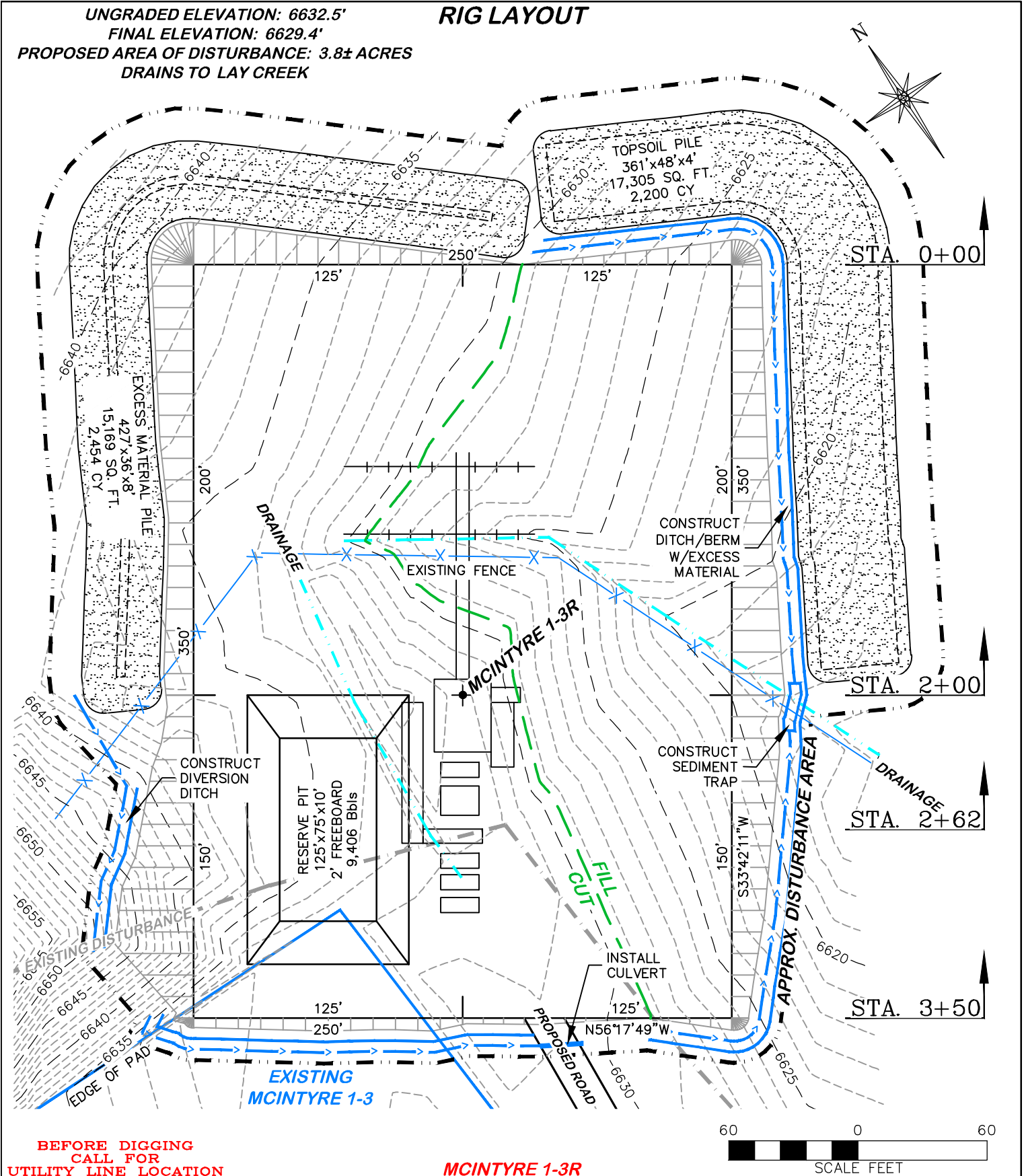
UNGRADED ELEVATION: 6632.5'

FINAL ELEVATION: 6629.4'

PROPOSED AREA OF DISTURBANCE: 3.8± ACRES

DRAINS TO LAY CREEK

RIG LAYOUT



**BEFORE DIGGING
CALL FOR
UTILITY LINE LOCATION**

MCINTYRE 1-3R

60 0 60
SCALE FEET



RIFFIN & ASSOCIATES, INC.

(307) 362-5028

1414 ELK ST., ROCK SPRINGS, WY 82901

DRAWN: 9/26/2014 - TCM

SCALE: 1" = 60'

REVISED: N/A -

DRG JOB No. 20691

EXHIBIT 2A

CONSTRUCTION LAYOUT DRAWING 2 OF 5

**RIG LAYOUT
SANTA FE NATURAL RESOURCES
MCINTYRE 1-3R**

**NESE, SECTION 3, T. 7 N., R. 94 W., 6th P.M.,
MOFFAT COUNTY, COLORADO**