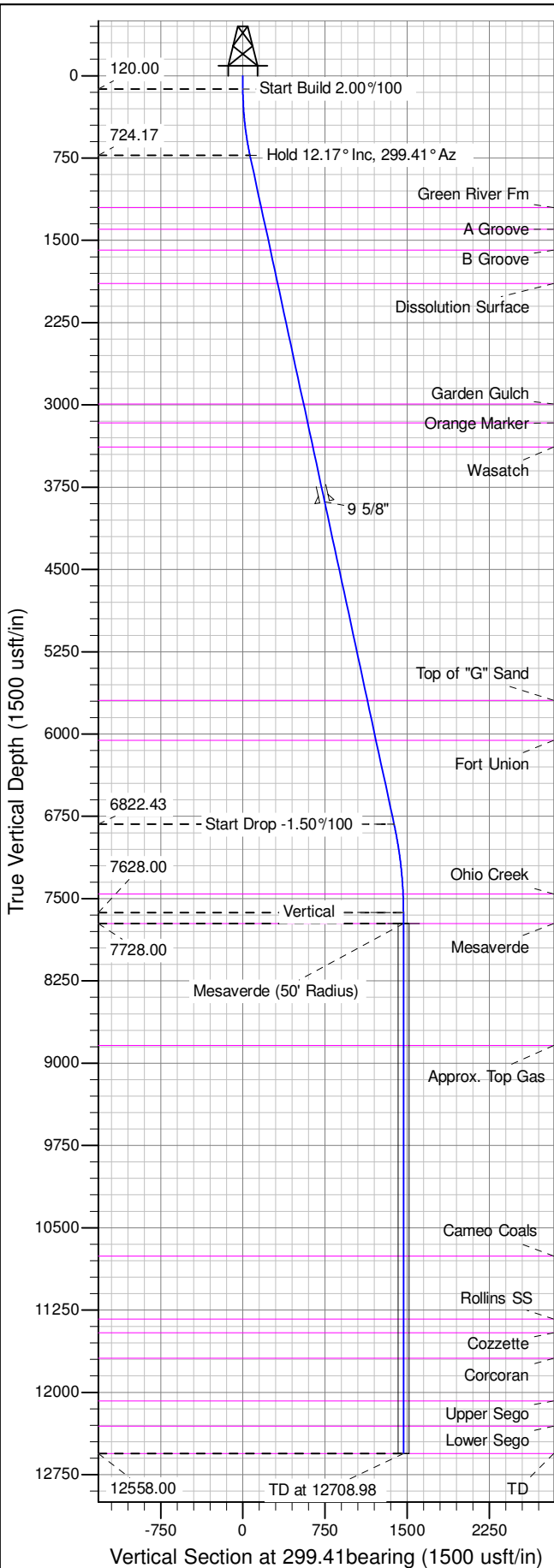
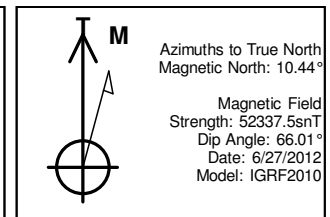
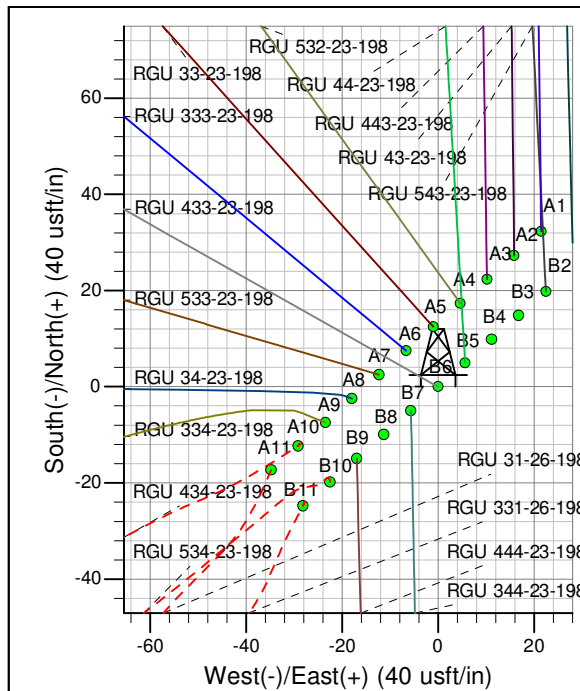
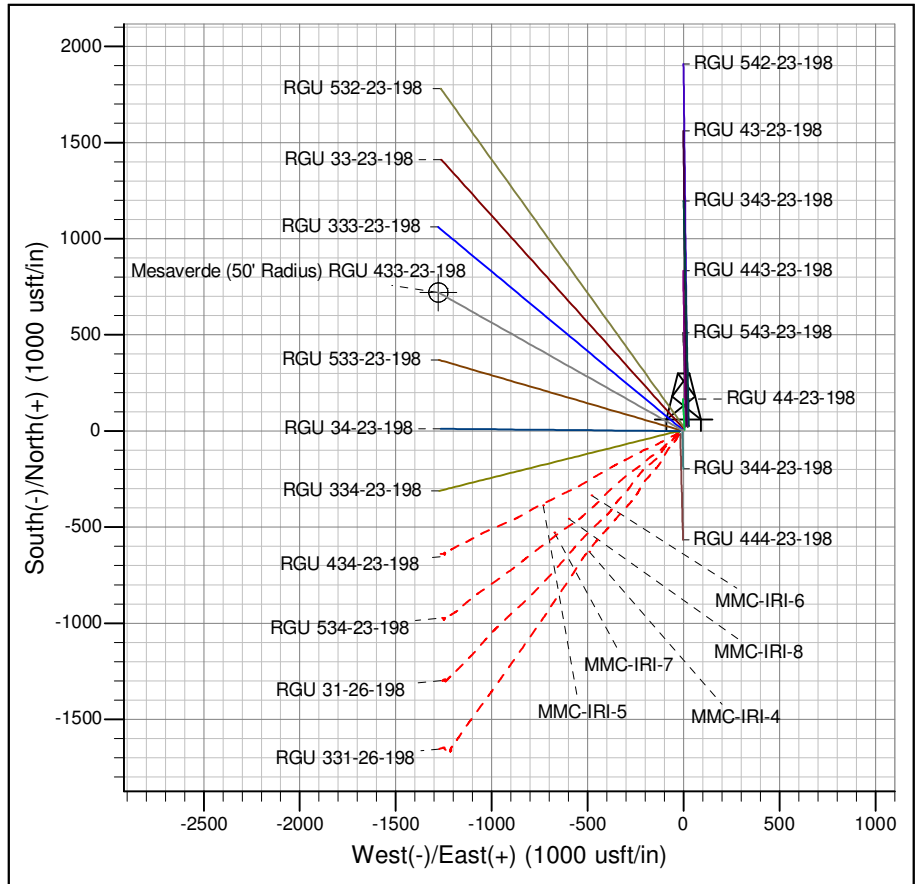




Well Name: RGU 433-23-198
Surface Location: RGU 43-23-198 Pad
North American Datum 1983 , US State Plane 1983 , Colorado Central Zone
Ground Elevation: 6567.00
+N/-S +E/-W Northing Easting Latitude Longitude Slot
0.00 0.00 1781564.50000 2199968.70000 39.94471 -108.35364 B6
KB @ 6592.00usft (Aztec 1000)



ANNOTATIONS									
TVD	MD	Inc	Azi	+N/-S	+E/-W	Vsect	Departure	Annotation	
120.00	120.00	0.00	0.00	0.00	0.00	0.00	0.00	Start Build	2.00%/100
724.17	728.75	12.17	299.41	31.64	-56.13	64.43	64.43	Hold 12.17° Inc, 299.41° Az	
6822.43	6967.32	12.17	299.41	677.69	-1202.29	1380.13	1380.13	Start Drop	-1.50%/100
7628.00	7778.98	0.00	0.00	719.88	-1277.13	1466.04	1466.04	Vertical	
7728.00	7878.98	0.00	0.00	719.88	-1277.13	1466.04	1466.04	Mesaverde	
12558.00	12708.98	0.00	0.00	719.88	-1277.13	1466.04	1466.04	TD at 12708.98	



Project: RG 23-01S-098W
Site: RGU 43-23-198 Pad
Well: RGU 433-23-198
Design #3 18Nov14 mab