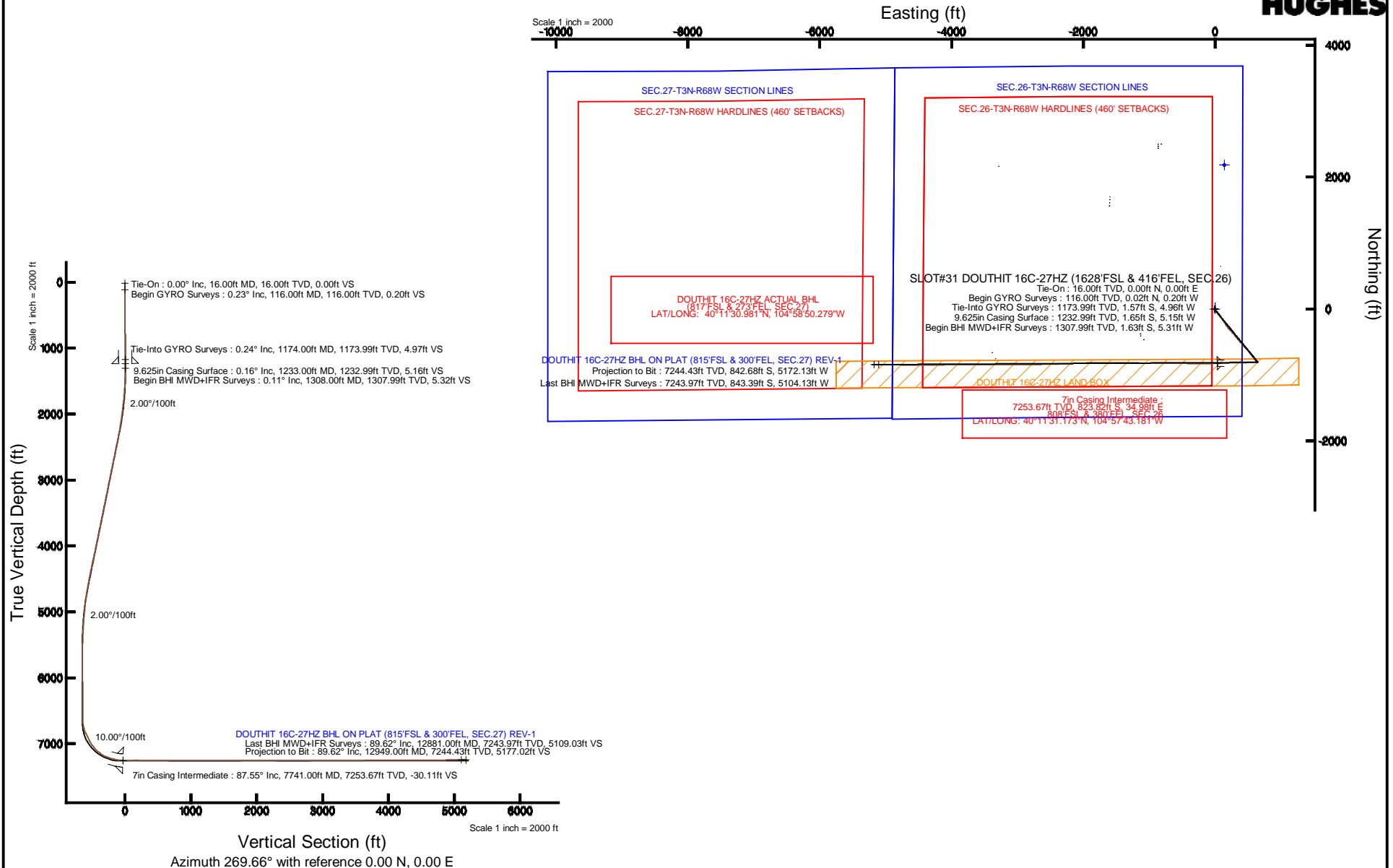


KERR-MCGEE OIL & GAS ONSHORE LP

Location: COLORADO Slot: SLOT#31 DOUTHIT 16C-27HZ (1628'FSL & 416'FEL, SEC.26)
 Field: WELD COUNTY (KERR MCGEE) Well: DOUTHIT 16C-27HZ
 Facility: SEC.26-T3N-R68W Wellbore: DOUTHIT 16C-27HZ PWB

Plot reference wellpath is DOUTHIT 16C-27HZ (REV-A.0) PWP

True vertical depths are referenced to XTREME 20 (16'KB) (RKB)	Grid System: NAD83 / Lambert Colorado SP, Northern Zone (501), US feet
Measured depths are referenced to XTREME 20 (16'KB) (RKB)	North Reference: True north
XTREME 20 (16'KB) (RKB) to Mean Sea Level: 4941 feet	Scale: True distance
Mean Sea Level to Mud line (At Slot: SLOT#31 DOUTHIT 16C-27HZ (1628'FSL & 416'FEL, SEC.26)): 0 feet	Depths are in feet
Coordinates are in feet referenced to Slot	Created by: precain on 11/20/2014



Actual Wellpath Report

DOUTHIT 16C-27HZ AWP

Page 1 of 7

REFERENCE WELLPATH IDENTIFICATION			
Operator	KERR-MCGEE OIL & GAS ONSHORE LP	Slot	SLOT#31 DOUTHIT 16C-27HZ (1628'FSL & 416'FEL, SEC.26)
Area	COLORADO	Well	DOUTHIT 16C-27HZ
Field	WELD COUNTY (KERR MCGEE)	Wellbore	DOUTHIT 16C-27HZ AWB
Facility	SEC.26-T3N-R68W		

REPORT SETUP INFORMATION			
Projection System	NAD83 / Lambert Colorado SP, Northern Zone (501), US feet	Software System	WellArchitect® 4.0.0
North Reference	True	User	Precain
Scale	0.999957	Report Generated	11/20/2014 at 2:12:51 PM
Convergence at slot	n/a	Database/Source file	WellArchitectDB/DOUTHIT_16C-27HZ_AWB.xml

WELLPATH LOCATION						
	Local coordinates		Grid coordinates		Geographic coordinates	
	North[ft]	East[ft]	Easting[US ft]	Northing[US ft]	Latitude	Longitude
Slot Location	671.95	3346.83	3150258.86	1314064.97	40°11'39.314"N	104°57'43.632" W
Facility Reference Pt			3146916.23	1313373.21	40°11'32.676"N	104°58'26.760" W
Field Reference Pt			3197771.84	1268891.29	40°04'09.600"N	104°47'36.000" W

WELLPATH DATUM			
Calculation method	Minimum curvature	XTREME 20 (16'KB) (RKB) to Facility Vertical Datum	4941.00ft
Horizontal Reference Pt	Slot	XTREME 20 (16'KB) (RKB) to Mean Sea Level	4941.00ft
Vertical Reference Pt	XTREME 20 (16'KB) (RKB)	XTREME 20 (16'KB) (RKB) to Mud Line at Slot (SLOT#31 DOUTHIT 16C-27HZ (1628'FSL & 416'FEL, SEC.26))	4941.00ft
MD Reference Pt	XTREME 20 (16'KB) (RKB)	Section Origin	N 0.00, E 0.00 ft
Field Vertical Reference	Mean Sea Level	Section Azimuth	269.66°

Actual Wellpath Report

DOUTHIT 16C-27HZ AWP

Page 2 of 7

REFERENCE WELLPATH IDENTIFICATION			
Operator	KERR-MCGEE OIL & GAS ONSHORE LP	Slot	SLOT#31 DOUTHIT 16C-27HZ (1628'FSL & 416'FEL, SEC.26)
Area	COLORADO	Well	DOUTHIT 16C-27HZ
Field	WELD COUNTY (KERR MCGEE)	Wellbore	DOUTHIT 16C-27HZ AWB
Facility	SEC.26-T3N-R68W		

WELLPATH DATA (145 stations) † = interpolated/extrapolated station										
MD [ft]	Inclination [°]	Azimuth [°]	TVD [ft]	Vert Sect [ft]	North [ft]	East [ft]	Latitude	Longitude	DLS [°/100ft]	Comments
0.00†	0.000	276.740	0.00	0.00	0.00	0.00	40°11'39.314"N	104°57'43.632"W	0.00	
16.00	0.000	276.740	16.00	0.00	0.00	0.00	40°11'39.314"N	104°57'43.632"W	0.00	Tie-On
116.00	0.230	276.740	116.00	0.20	0.02	-0.20	40°11'39.314"N	104°57'43.635"W	0.23	Begin GYRO Surveys
216.00	0.220	266.340	216.00	0.59	0.03	-0.59	40°11'39.314"N	104°57'43.640"W	0.04	
316.00	0.320	293.190	316.00	1.04	0.13	-1.04	40°11'39.315"N	104°57'43.645"W	0.16	
416.00	0.470	257.720	416.00	1.70	0.16	-1.70	40°11'39.316"N	104°57'43.654"W	0.28	
516.00	0.290	241.390	515.99	2.32	-0.05	-2.32	40°11'39.313"N	104°57'43.662"W	0.21	
616.00	0.400	228.250	615.99	2.80	-0.41	-2.80	40°11'39.310"N	104°57'43.668"W	0.13	
716.00	0.110	222.220	715.99	3.13	-0.71	-3.13	40°11'39.307"N	104°57'43.672"W	0.29	
816.00	0.260	253.800	815.99	3.41	-0.84	-3.41	40°11'39.306"N	104°57'43.676"W	0.18	
916.00	0.240	215.140	915.99	3.75	-1.08	-3.75	40°11'39.303"N	104°57'43.680"W	0.17	
1016.00	0.370	254.980	1015.99	4.19	-1.33	-4.18	40°11'39.301"N	104°57'43.686"W	0.24	
1116.00	0.270	256.370	1115.99	4.73	-1.47	-4.72	40°11'39.299"N	104°57'43.693"W	0.10	
1174.00	0.240	240.680	1173.99	4.97	-1.57	-4.96	40°11'39.299"N	104°57'43.696"W	0.13	Tie-Into GYRO Surveys
1308.00	0.110	302.950	1307.99	5.32	-1.63	-5.31	40°11'39.298"N	104°57'43.700"W	0.16	Begin BHI MWD+IFR Surveys
1402.00	1.590	141.950	1401.97	4.60	-2.61	-4.58	40°11'39.288"N	104°57'43.691"W	1.80	
1495.00	3.900	139.460	1494.86	1.77	-6.03	-1.73	40°11'39.254"N	104°57'43.654"W	2.49	
1590.00	5.770	140.810	1589.52	-3.31	-12.19	3.39	40°11'39.194"N	104°57'43.588"W	1.97	
1684.00	7.710	148.020	1682.87	-9.59	-21.20	9.71	40°11'39.105"N	104°57'43.507"W	2.25	
1778.00	9.250	145.030	1775.84	-17.19	-32.74	17.38	40°11'38.990"N	104°57'43.408"W	1.70	
1871.00	10.210	138.000	1867.50	-26.91	-44.99	27.18	40°11'38.869"N	104°57'43.282"W	1.64	
1965.00	11.380	142.790	1959.84	-38.02	-58.57	38.36	40°11'38.735"N	104°57'43.138"W	1.57	
2059.00	12.940	139.660	2051.73	-50.35	-73.98	50.79	40°11'38.583"N	104°57'42.978"W	1.80	
2153.00	14.460	142.270	2143.05	-64.24	-91.28	64.78	40°11'38.412"N	104°57'42.797"W	1.75	
2247.00	15.830	146.460	2233.79	-78.39	-111.25	79.05	40°11'38.215"N	104°57'42.613"W	1.86	
2341.00	17.890	145.370	2323.74	-93.55	-133.82	94.34	40°11'37.992"N	104°57'42.416"W	2.22	
2435.00	19.460	145.840	2412.79	-110.40	-158.66	111.34	40°11'37.746"N	104°57'42.197"W	1.68	
2529.00	20.640	145.500	2501.09	-128.42	-185.27	129.51	40°11'37.483"N	104°57'41.963"W	1.26	
2623.00	20.100	145.190	2589.21	-146.86	-212.19	148.12	40°11'37.217"N	104°57'41.723"W	0.59	
2716.00	19.620	145.530	2676.68	-164.67	-238.18	166.08	40°11'36.960"N	104°57'41.492"W	0.53	
2810.00	18.730	145.340	2765.46	-182.03	-263.60	183.59	40°11'36.709"N	104°57'41.266"W	0.95	
2904.00	18.520	138.150	2854.55	-200.44	-287.14	202.14	40°11'36.476"N	104°57'41.027"W	2.45	
2993.00	17.820	138.020	2939.12	-218.85	-307.79	220.68	40°11'36.272"N	104°57'40.788"W	0.79	
3078.00	16.480	139.650	3020.33	-235.25	-326.65	237.18	40°11'36.086"N	104°57'40.576"W	1.67	
3163.00	17.340	137.510	3101.66	-251.50	-345.18	253.55	40°11'35.903"N	104°57'40.365"W	1.25	
3248.00	17.910	141.050	3182.67	-268.16	-364.69	270.32	40°11'35.710"N	104°57'40.149"W	1.43	
3333.00	16.240	140.970	3263.92	-283.74	-384.09	286.02	40°11'35.518"N	104°57'39.946"W	1.96	
3418.00	16.760	140.370	3345.42	-298.94	-402.76	301.32	40°11'35.334"N	104°57'39.749"W	0.64	
3503.00	16.550	139.120	3426.86	-314.57	-421.35	317.06	40°11'35.150"N	104°57'39.546"W	0.49	
3588.00	17.140	136.420	3508.21	-331.01	-439.58	333.62	40°11'34.970"N	104°57'39.333"W	1.15	
3673.00	18.610	141.330	3589.11	-348.01	-459.24	350.73	40°11'34.776"N	104°57'39.112"W	2.48	
3758.00	19.330	140.550	3669.49	-365.30	-480.69	368.15	40°11'34.564"N	104°57'38.888"W	0.90	
3843.00	17.800	139.740	3750.07	-382.51	-501.47	385.48	40°11'34.358"N	104°57'38.665"W	1.83	
3928.00	19.090	139.980	3830.70	-399.72	-522.03	402.82	40°11'34.155"N	104°57'38.441"W	1.52	
4014.00	18.760	139.110	3912.05	-417.69	-543.26	420.91	40°11'33.946"N	104°57'38.208"W	0.50	

Actual Wellpath Report

DOUTHIT 16C-27HZ AWP

Page 3 of 7

REFERENCE WELLPATH IDENTIFICATION			
Operator	KERR-MCGEE OIL & GAS ONSHORE LP	Slot	SLOT#31 DOUTHIT 16C-27HZ (1628'FSL & 416'FEL, SEC.26)
Area	COLORADO	Well	DOUTHIT 16C-27HZ
Field	WELD COUNTY (KERR MCGEE)	Wellbore	DOUTHIT 16C-27HZ AWB
Facility	SEC.26-T3N-R68W		

WELLPATH DATA (145 stations)										
MD [ft]	Inclination [°]	Azimuth [°]	TVD [ft]	Vert Sect [ft]	North [ft]	East [ft]	Latitude	Longitude	DLS [°/100ft]	Comments
4099.00	16.900	138.140	3992.96	-434.77	-562.79	438.11	40°11'33.752"N	104°57'37.987"W	2.22	
4184.00	16.370	133.950	4074.41	-451.53	-580.31	454.98	40°11'33.579"N	104°57'37.769"W	1.54	
4269.00	17.360	133.210	4155.75	-469.30	-597.30	472.84	40°11'33.411"N	104°57'37.539"W	1.19	
4354.00	18.560	137.970	4236.61	-487.49	-616.04	491.14	40°11'33.226"N	104°57'37.303"W	2.23	
4439.00	18.490	139.060	4317.21	-505.26	-636.27	509.03	40°11'33.026"N	104°57'37.073"W	0.42	
4525.00	17.390	139.870	4399.03	-522.36	-656.39	526.25	40°11'32.827"N	104°57'36.851"W	1.31	
4610.00	17.500	141.520	4480.12	-538.38	-676.11	542.39	40°11'32.633"N	104°57'36.643"W	0.60	
4695.00	15.870	142.970	4561.54	-553.22	-695.40	557.34	40°11'32.442"N	104°57'36.450"W	1.98	
4780.00	16.150	143.130	4643.24	-567.20	-714.13	571.44	40°11'32.257"N	104°57'36.269"W	0.33	
4865.00	14.920	140.870	4725.13	-581.09	-732.08	585.43	40°11'32.080"N	104°57'36.088"W	1.61	
4950.00	12.620	144.450	4807.69	-593.30	-748.12	597.74	40°11'31.921"N	104°57'35.930"W	2.88	
5035.00	11.110	145.420	4890.87	-603.27	-762.42	607.79	40°11'31.780"N	104°57'35.800"W	1.79	
5120.00	9.300	144.950	4974.52	-611.79	-774.79	616.38	40°11'31.657"N	104°57'35.689"W	2.13	
5206.00	7.650	136.350	5059.58	-619.67	-784.62	624.32	40°11'31.560"N	104°57'35.587"W	2.41	
5291.00	6.480	136.530	5143.93	-626.83	-792.19	631.53	40°11'31.485"N	104°57'35.494"W	1.38	
5376.00	5.210	136.590	5228.49	-632.75	-798.48	637.48	40°11'31.423"N	104°57'35.418"W	1.49	
5461.00	4.300	139.350	5313.20	-637.44	-803.70	642.21	40°11'31.372"N	104°57'35.357"W	1.10	
5546.00	2.720	146.710	5398.04	-640.60	-807.80	645.39	40°11'31.331"N	104°57'35.316"W	1.93	
5631.00	1.130	136.970	5482.98	-642.27	-810.10	647.07	40°11'31.308"N	104°57'35.294"W	1.90	
5716.00	1.040	164.660	5567.97	-643.04	-811.46	647.85	40°11'31.295"N	104°57'35.284"W	0.62	
5801.00	0.640	191.980	5652.96	-643.13	-812.67	647.95	40°11'31.283"N	104°57'35.283"W	0.65	
6057.00	0.370	359.160	5908.96	-642.82	-813.24	647.64	40°11'31.277"N	104°57'35.287"W	0.39	
6312.00	1.860	334.880	6163.90	-641.08	-808.67	645.88	40°11'31.323"N	104°57'35.309"W	0.60	
6397.00	0.650	267.390	6248.88	-640.02	-807.44	644.81	40°11'31.335"N	104°57'35.323"W	2.02	
6482.00	0.780	289.430	6333.88	-638.99	-807.27	643.78	40°11'31.336"N	104°57'35.336"W	0.35	
6567.00	0.870	40.750	6418.87	-638.87	-806.59	643.66	40°11'31.343"N	104°57'35.338"W	1.60	
6652.00	0.550	55.050	6503.87	-639.63	-805.87	644.41	40°11'31.350"N	104°57'35.328"W	0.43	
6737.00	0.320	326.360	6588.86	-639.84	-805.44	644.62	40°11'31.355"N	104°57'35.326"W	0.74	
6822.00	3.540	274.850	6673.81	-637.09	-805.02	641.87	40°11'31.359"N	104°57'35.361"W	3.94	
6865.00	9.750	273.620	6716.50	-632.13	-804.67	636.91	40°11'31.362"N	104°57'35.425"W	14.44	
6907.00	14.650	266.630	6757.54	-623.28	-804.76	628.05	40°11'31.361"N	104°57'35.539"W	12.16	
6950.00	19.990	267.570	6798.57	-610.49	-805.39	615.27	40°11'31.355"N	104°57'35.704"W	12.44	
6994.00	24.760	267.770	6839.25	-593.76	-806.07	598.54	40°11'31.348"N	104°57'35.919"W	10.84	
7037.00	26.880	267.750	6877.95	-575.04	-806.80	579.82	40°11'31.341"N	104°57'36.160"W	4.93	
7082.00	25.760	266.240	6918.29	-555.11	-807.84	559.90	40°11'31.331"N	104°57'36.417"W	2.90	
7125.00	27.490	268.460	6956.73	-535.86	-808.72	540.66	40°11'31.322"N	104°57'36.665"W	4.64	
7167.00	31.580	265.900	6993.26	-515.19	-809.77	519.99	40°11'31.312"N	104°57'36.932"W	10.19	
7210.00	37.170	264.910	7028.74	-490.99	-811.73	495.80	40°11'31.292"N	104°57'37.243"W	13.06	
7252.00	41.290	264.800	7061.27	-464.52	-814.11	469.35	40°11'31.269"N	104°57'37.584"W	9.81	
7295.00	46.810	268.060	7092.17	-434.69	-815.93	439.53	40°11'31.251"N	104°57'37.968"W	13.87	
7337.00	48.010	269.070	7120.59	-403.78	-816.70	408.62	40°11'31.243"N	104°57'38.367"W	3.36	
7380.00	53.160	271.080	7147.88	-370.57	-816.64	375.41	40°11'31.244"N	104°57'38.795"W	12.51	
7422.00	59.090	270.880	7171.28	-335.73	-816.04	340.56	40°11'31.250"N	104°57'39.244"W	14.12	
7465.00	66.080	269.170	7191.07	-297.58	-816.04	302.41	40°11'31.250"N	104°57'39.735"W	16.63	
7507.00	71.340	267.600	7206.32	-258.47	-817.16	263.31	40°11'31.239"N	104°57'40.239"W	13.00	

Actual Wellpath Report

DOUTHIT 16C-27HZ AWP

Page 4 of 7

REFERENCE WELLPATH IDENTIFICATION			
Operator	KERR-MCGEE OIL & GAS ONSHORE LP	Slot	SLOT#31 DOUTHIT 16C-27HZ (1628'FSL & 416'FEL, SEC.26)
Area	COLORADO	Well	DOUTHIT 16C-27HZ
Field	WELD COUNTY (KERR MCGEE)	Wellbore	DOUTHIT 16C-27HZ AWB
Facility	SEC.26-T3N-R68W		

WELLPATH DATA (145 stations) † = interpolated/extrapolated station										
MD [ft]	Inclination [°]	Azimuth [°]	TVD [ft]	Vert Sect [ft]	North [ft]	East [ft]	Latitude	Longitude	DLS [°/100ft]	Comments
7550.00	74.490	268.240	7218.95	-217.39	-818.65	222.24	40°11'31.224"N	104°57'40.768"W	7.46	
7592.00	74.860	268.230	7230.05	-176.90	-819.89	181.75	40°11'31.212"N	104°57'41.290"W	0.88	
7635.00	78.440	268.690	7239.97	-135.08	-821.02	139.94	40°11'31.201"N	104°57'41.829"W	8.39	
7677.00	81.190	268.650	7247.40	-93.75	-821.98	98.62	40°11'31.191"N	104°57'42.361"W	6.55	
7741.00†	87.552	268.027	7253.67	-30.11	-823.82	34.98	40°11'31.173"N	104°57'43.181"W	9.99	7" Casing Point
7778.00	91.230	267.670	7254.07	6.86	-825.21	-1.98	40°11'31.159"N	104°57'43.658"W	9.99	
7863.00	90.490	269.540	7252.79	91.84	-827.28	-86.94	40°11'31.139"N	104°57'44.752"W	2.37	
7948.00	90.030	270.160	7252.41	176.83	-827.50	-171.94	40°11'31.137"N	104°57'45.848"W	0.91	
8035.00	88.910	270.300	7253.21	263.82	-827.16	-258.93	40°11'31.140"N	104°57'46.969"W	1.30	
8120.00	89.440	270.270	7254.44	348.81	-826.73	-343.92	40°11'31.144"N	104°57'48.064"W	0.62	
8205.00	89.220	270.510	7255.43	433.80	-826.15	-428.92	40°11'31.150"N	104°57'49.159"W	0.38	
8290.00	89.290	270.550	7256.53	518.78	-825.37	-513.91	40°11'31.158"N	104°57'50.254"W	0.09	
8375.00	88.330	270.600	7258.30	603.75	-824.51	-598.88	40°11'31.166"N	104°57'51.349"W	1.13	
8460.00	88.270	269.860	7260.82	688.71	-824.17	-683.84	40°11'31.169"N	104°57'52.444"W	0.87	
8545.00	88.920	270.080	7262.91	773.68	-824.22	-768.82	40°11'31.169"N	104°57'53.539"W	0.81	
8630.00	89.690	270.460	7263.94	858.67	-823.82	-853.81	40°11'31.173"N	104°57'54.634"W	1.01	
8715.00	90.800	270.930	7263.57	943.65	-822.79	-938.80	40°11'31.183"N	104°57'55.729"W	1.42	
8800.00	90.490	271.010	7262.62	1028.62	-821.35	-1023.78	40°11'31.197"N	104°57'56.824"W	0.38	
8885.00	89.900	270.880	7262.33	1113.60	-819.95	-1108.77	40°11'31.211"N	104°57'57.919"W	0.71	
8971.00	89.350	271.070	7262.89	1199.58	-818.48	-1194.76	40°11'31.225"N	104°57'59.027"W	0.68	
9055.00	89.810	270.580	7263.51	1283.56	-817.27	-1278.74	40°11'31.237"N	104°58'00.110"W	0.80	
9141.00	90.950	270.310	7262.94	1369.55	-816.61	-1364.74	40°11'31.244"N	104°58'01.218"W	1.36	
9226.00	90.670	270.400	7261.73	1454.53	-816.08	-1449.73	40°11'31.249"N	104°58'02.313"W	0.35	
9311.00	90.120	269.850	7261.15	1539.53	-815.89	-1534.73	40°11'31.251"N	104°58'03.408"W	0.92	
9396.00	90.030	270.390	7261.04	1624.52	-815.72	-1619.72	40°11'31.253"N	104°58'04.503"W	0.64	
9481.00	90.920	270.130	7260.33	1709.51	-815.33	-1704.72	40°11'31.256"N	104°58'05.599"W	1.09	
9566.00	91.260	269.210	7258.71	1794.50	-815.82	-1789.70	40°11'31.251"N	104°58'06.694"W	1.15	
9736.00	89.780	268.380	7257.17	1964.47	-819.39	-1959.65	40°11'31.216"N	104°58'08.884"W	1.00	
9822.00	89.870	267.810	7257.43	2050.43	-822.25	-2045.60	40°11'31.188"N	104°58'09.991"W	0.67	
9907.00	89.630	267.950	7257.81	2135.39	-825.40	-2130.54	40°11'31.157"N	104°58'11.086"W	0.33	
9992.00	89.190	267.840	7258.68	2220.35	-828.52	-2215.48	40°11'31.126"N	104°58'12.180"W	0.53	
10162.00	90.030	268.610	7259.84	2390.29	-833.78	-2385.39	40°11'31.073"N	104°58'14.370"W	0.67	
10332.00	88.920	268.360	7261.40	2560.24	-838.28	-2555.32	40°11'31.029"N	104°58'16.559"W	0.67	
10502.00	91.300	269.400	7261.07	2730.21	-841.60	-2725.28	40°11'30.996"N	104°58'18.749"W	1.53	
10587.00	90.830	269.480	7259.49	2815.19	-842.43	-2810.26	40°11'30.988"N	104°58'19.844"W	0.56	
10672.00	90.240	268.870	7258.70	2900.19	-843.66	-2895.24	40°11'30.975"N	104°58'20.940"W	1.00	
10757.00	90.490	269.690	7258.15	2985.18	-844.72	-2980.24	40°11'30.965"N	104°58'22.035"W	1.01	
10842.00	89.960	270.010	7257.82	3070.18	-844.95	-3065.23	40°11'30.962"N	104°58'23.130"W	0.73	
10927.00	90.460	269.780	7257.51	3155.18	-845.10	-3150.23	40°11'30.961"N	104°58'24.225"W	0.65	
11012.00	90.030	270.100	7257.15	3240.18	-845.19	-3235.23	40°11'30.960"N	104°58'25.321"W	0.63	
11097.00	90.760	269.870	7256.56	3325.17	-845.21	-3320.23	40°11'30.959"N	104°58'26.416"W	0.90	
11182.00	90.270	269.900	7255.80	3410.17	-845.38	-3405.23	40°11'30.958"N	104°58'27.511"W	0.58	
11268.00	91.040	270.160	7254.81	3496.16	-845.34	-3491.22	40°11'30.958"N	104°58'28.619"W	0.95	
11353.00	90.920	270.170	7253.36	3581.14	-845.09	-3576.21	40°11'30.960"N	104°58'29.714"W	0.14	
11438.00	90.670	270.000	7252.18	3666.13	-844.97	-3661.20	40°11'30.961"N	104°58'30.809"W	0.36	

Actual Wellpath Report

DOUTHIT 16C-27HZ AWP

Page 5 of 7

REFERENCE WELLPATH IDENTIFICATION			
Operator	KERR-MCGEE OIL & GAS ONSHORE LP	Slot	SLOT#31 DOUTHIT 16C-27HZ (1628'FSL & 416'FEL, SEC.26)
Area	COLORADO	Well	DOUTHIT 16C-27HZ
Field	WELD COUNTY (KERR MCGEE)	Wellbore	DOUTHIT 16C-27HZ AWB
Facility	SEC.26-T3N-R68W		

WELLPATH DATA (145 stations)										
MD [ft]	Inclination [°]	Azimuth [°]	TVD [ft]	Vert Sect [ft]	North [ft]	East [ft]	Latitude	Longitude	DLS [°/100ft]	Comments
11608.00	90.400	269.670	7250.59	3836.12	-845.46	-3831.19	40°11'30.956"N	104°58'33.000"W	0.25	
11693.00	90.360	269.570	7250.03	3921.12	-846.02	-3916.19	40°11'30.951"N	104°58'34.095"W	0.13	
11863.00	90.210	269.700	7249.18	4091.12	-847.10	-4086.18	40°11'30.940"N	104°58'36.286"W	0.12	
12035.00	90.120	270.040	7248.69	4263.12	-847.49	-4258.18	40°11'30.935"N	104°58'38.502"W	0.20	
12205.00	90.060	269.860	7248.42	4433.12	-847.64	-4428.18	40°11'30.934"N	104°58'40.693"W	0.11	
12375.00	90.270	269.990	7247.93	4603.11	-847.87	-4598.18	40°11'30.931"N	104°58'42.883"W	0.15	
12631.00	90.680	270.670	7245.81	4859.08	-846.39	-4854.16	40°11'30.945"N	104°58'46.182"W	0.31	
12716.00	90.860	270.750	7244.67	4944.06	-845.34	-4939.15	40°11'30.956"N	104°58'47.277"W	0.23	
12881.00	89.620	270.600	7243.97	5109.03	-843.39	-5104.13	40°11'30.974"N	104°58'49.403"W	0.76	Last BHI MWD+IFR Surveys
12949.00	89.620	270.600	7244.43	5177.02	-842.68	-5172.13	40°11'30.981"N	104°58'50.279"W	0.00	Projection to Bit

HOLE & CASING SECTIONS - Ref Wellbore: DOUTHIT 16C-27HZ AWB Ref Wellpath: DOUTHIT 16C-27HZ AWP									
String/Diameter	Start MD [ft]	End MD [ft]	Interval [ft]	Start TVD [ft]	End TVD [ft]	Start N/S [ft]	Start E/W [ft]	End N/S [ft]	End E/W [ft]
13.5in Open Hole	16.00	1244.00	1228.00	16.00	1243.99	0.00	0.00	-1.65	-5.18
9.625in Casing Surface	16.00	1233.00	1217.00	16.00	1232.99	0.00	0.00	-1.65	-5.15
8.75in Open Hole	1244.00	7753.00	6509.00	1243.99	7254.06	-1.65	-5.18	-824.25	23.00
7in Casing Intermediate	16.00	7741.00	7725.00	16.00	7253.67	0.00	0.00	-823.82	34.98
6.125in Open Hole	7753.00	12949.00	5196.00	7254.06	7244.43	-824.25	23.00	-842.68	-5172.13

Actual Wellpath Report

DOUTHIT 16C-27HZ AWP

Page 6 of 7

REFERENCE WELLPATH IDENTIFICATION			
Operator	KERR-MCGEE OIL & GAS ONSHORE LP	Slot	SLOT#31 DOUTHIT 16C-27HZ (1628'FSL & 416'FEL, SEC.26)
Area	COLORADO	Well	DOUTHIT 16C-27HZ
Field	WELD COUNTY (KERR MCGEE)	Wellbore	DOUTHIT 16C-27HZ AWB
Facility	SEC.26-T3N-R68W		

TARGETS									
Name	MD [ft]	TVD [ft]	North [ft]	East [ft]	Grid East [US ft]	Grid North [US ft]	Latitude	Longitude	Shape
SEC.26-T3N-R68W HARDLINES (460' SETBACKS)		-18.00	2182.56	141.92	3150387.54	1316248.25	40°12'00.882"N	104°57'41.803"W	polygon
SEC.26-T3N-R68W SECTION LINES		-18.00	2182.56	141.92	3150387.54	1316248.25	40°12'00.882"N	104°57'41.803"W	polygon
SEC.27-T3N-R68W HARDLINES (460' SETBACKS)		-18.00	2182.56	141.92	3150387.54	1316248.25	40°12'00.882"N	104°57'41.803"W	polygon
SEC.27-T3N-R68W SECTION LINES		-18.00	2182.56	141.92	3150387.54	1316248.25	40°12'00.882"N	104°57'41.803"W	polygon
DOUTHIT 16C-27HZ BHL ON PLAT (815'FSL & 300'FEL, SEC.27) REV-1		7258.00	-844.22	-5197.82	3145066.49	1313189.27	40°11'30.966"N	104°58'50.610"W	point
DOUTHIT 16C-27HZ LAND BOX		7259.00	0.00	0.00	3150258.86	1314064.97	40°11'39.314"N	104°57'43.632"W	polygon

WELLPATH COMPOSITION - Ref Wellbore: DOUTHIT 16C-27HZ AWB					Ref Wellpath: DOUTHIT 16C-27HZ AWP	
Start MD [ft]	End MD [ft]	Positional Uncertainty Model	Log Name/Comment		Wellbore	
16.00	1174.00	Generic gyro - continuous (Standard)	MS ENERGY GYRO SURVEYS <116-1174>		DOUTHIT 16C-27HZ AWB	
1174.00	7677.00	NaviTrak (IFR)	BHI MWD+IFR SURVEYS 8 3/4" HOLE <1308-7677>		DOUTHIT 16C-27HZ AWB	
7677.00	12881.00	NaviTrak (IFR)	BHI MWD+IFR SURVEYS 6 1/8" HOLE <7778-12881>		DOUTHIT 16C-27HZ AWB	
12881.00	12949.00	Blind Drilling (std)	Projection to bit		DOUTHIT 16C-27HZ AWB	

REFERENCE WELLPATH IDENTIFICATION			
Operator	KERR-MCGEE OIL & GAS ONSHORE LP	Slot	SLOT#31 DOUTHIT 16C-27HZ (1628'FSL & 416'FEL, SEC.26)
Area	COLORADO	Well	DOUTHIT 16C-27HZ
Field	WELD COUNTY (KERR MCGEE)	Wellbore	DOUTHIT 16C-27HZ AWB
Facility	SEC.26-T3N-R68W		

WELLPATH COMMENTS				
MD [ft]	Inclination [°]	Azimuth [°]	TVD [ft]	Comment
16.00	0.000	276.740	16.00	Tie-On
116.00	0.230	276.740	116.00	Begin GYRO Surveys
1174.00	0.240	240.680	1173.99	Tie-Into GYRO Surveys
1308.00	0.110	302.950	1307.99	Begin BHI MWD+IFR Surveys
7741.00	87.552	268.027	7253.67	7" Casing Point
12881.00	89.620	270.600	7243.97	Last BHI MWD+IFR Surveys
12949.00	89.620	270.600	7244.43	Projection to Bit