

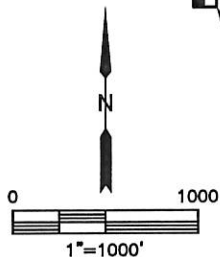
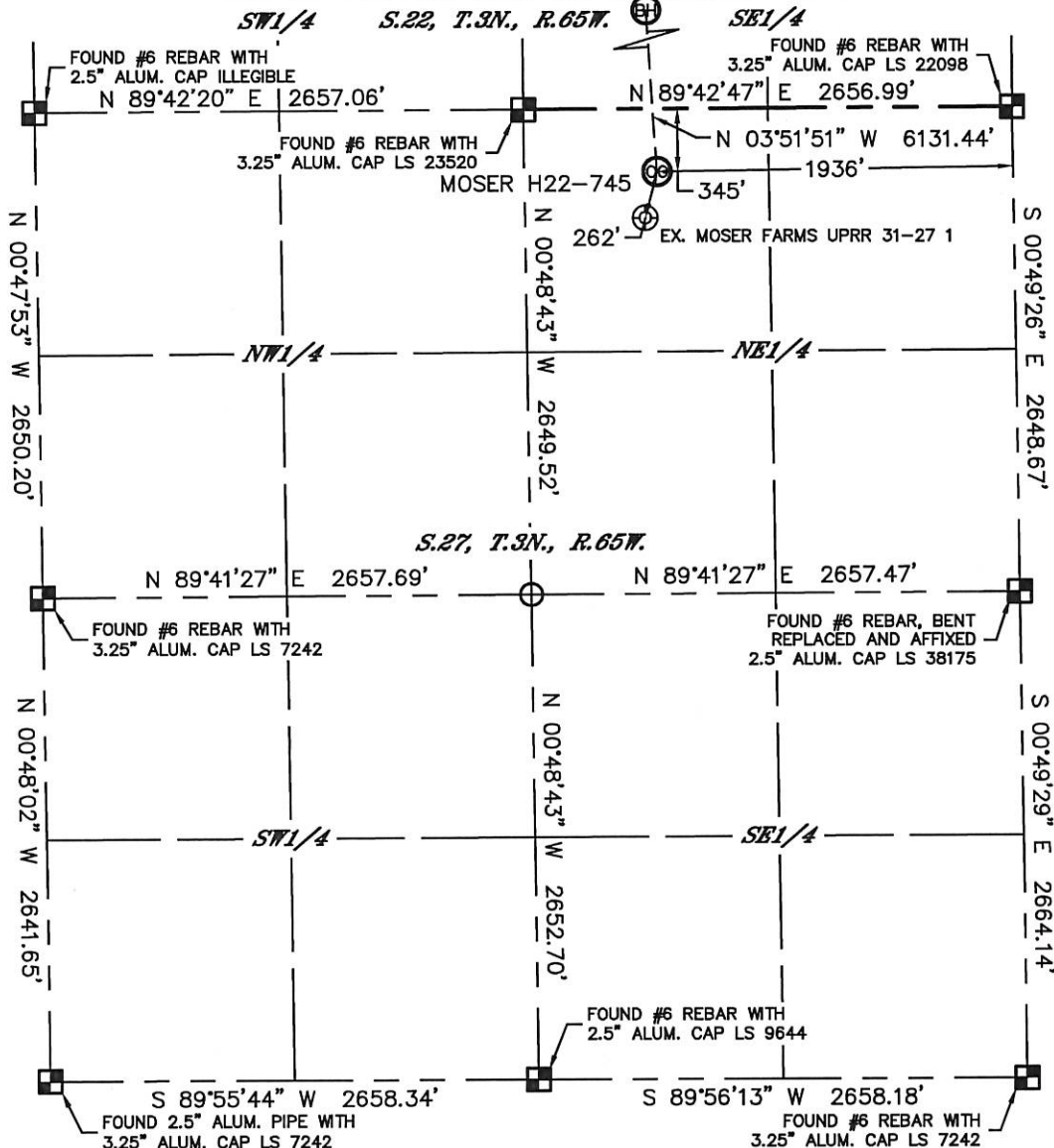


Lat40°, Inc. 1635 Foxtrail Drive, Suite 325 Loveland, CO 970-776-3321

# WELL LOCATION CERTIFICATE

SECTION: 27  
TOWNSHIP: 3N  
RANGE: 65W

THIS MAP DOES NOT REPRESENT A BOUNDARY SURVEY



In accordance with a request from Mike Rodine with Noble Energy Inc. Lat40°, Inc. has determined the surface location of the MOSER H22-745 to be 345' from the NORTH line and 1936' from the EAST line as measured at right angles from the section lines of Section 27, Township 3 North, Range 65 West and the bottom hole to be 496' from the SOUTH line and 2311' from the EAST line as measured at right angles from the section lines of Section 15, Township 3 North, Range 65 West of the Sixth Principal Meridian, County of Weld, State of Colorado.

I hereby state that this Well Location Certificate was prepared by me, or under my direct supervision, that the fieldwork was completed on 3/13/2014, for and on behalf of Noble Energy Inc. That this is not a Land Survey Plat or an Improvement Survey Plat, and that it is not to be relied upon for establishment of fence, building, or other future Improvement lines.

## NOTE:

- 1) Bearings shown are Grid Bearings of the Colorado State Plane Coordinate System, North Zone, North American Datum 1983/2007. The lineal dimensions as contained herein are based upon the "U.S. Survey Foot."
  - 2) Ground elevations are based on an observed GPS elevation (NAVD 1988 DATUM).
  - 3) IMPROVEMENTS: See LOCATION DRAWING for all visible improvements within 500' of disturbed area.
  - 4) SURFACE USE: OLD CROP LAND
  - 5) INSTRUMENT OPERATOR: BRIAN ROTTINGHAUS
  - 6) NEAREST EXISTING WELL: MOSER FARMS UPRR 31-27 1, 262' SW
- NEAREST CULTURAL ITEMS:  
BUILDING: ±1310' NW  
BUILDING UNIT: ±1310' NW  
HIGH OCCUPANCY BUILDING UNIT: 5280'+  
DESIGNATED OUTSIDE ACTIVITY AREA: 5280'+  
PUBLIC ROAD: 332' N (CR 30)  
ABOVEGROUND UTILITY: 310' N  
RAILROAD: 5280'+  
PROPERTY LINE: 345' N

**SURFACE LOCATION**  
LAT: 40.20270°N  
LONG: 104.64717°W  
PDOP: 1.9  
ELEV: 4811'  
1/4, 1/4: NWNE

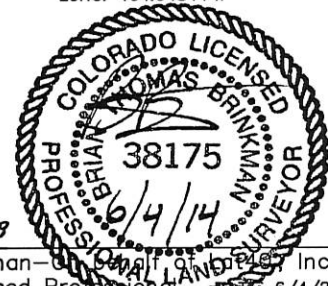
**BOTTOM HOLE**  
LAT: 40.21950°N  
LONG: 104.64844°W

## LEGEND

- = ALIQUOT MONUMENT AS DESCRIBED
- = CALCULATED POSITION

SHEET 1 OF 3

Brian T. Brinkman—Colorado Licensed Professional Land Surveyor No. 38175  
DATE: 6/4/2014  
PROJECT#: 2013178



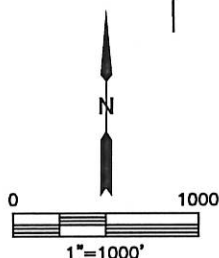
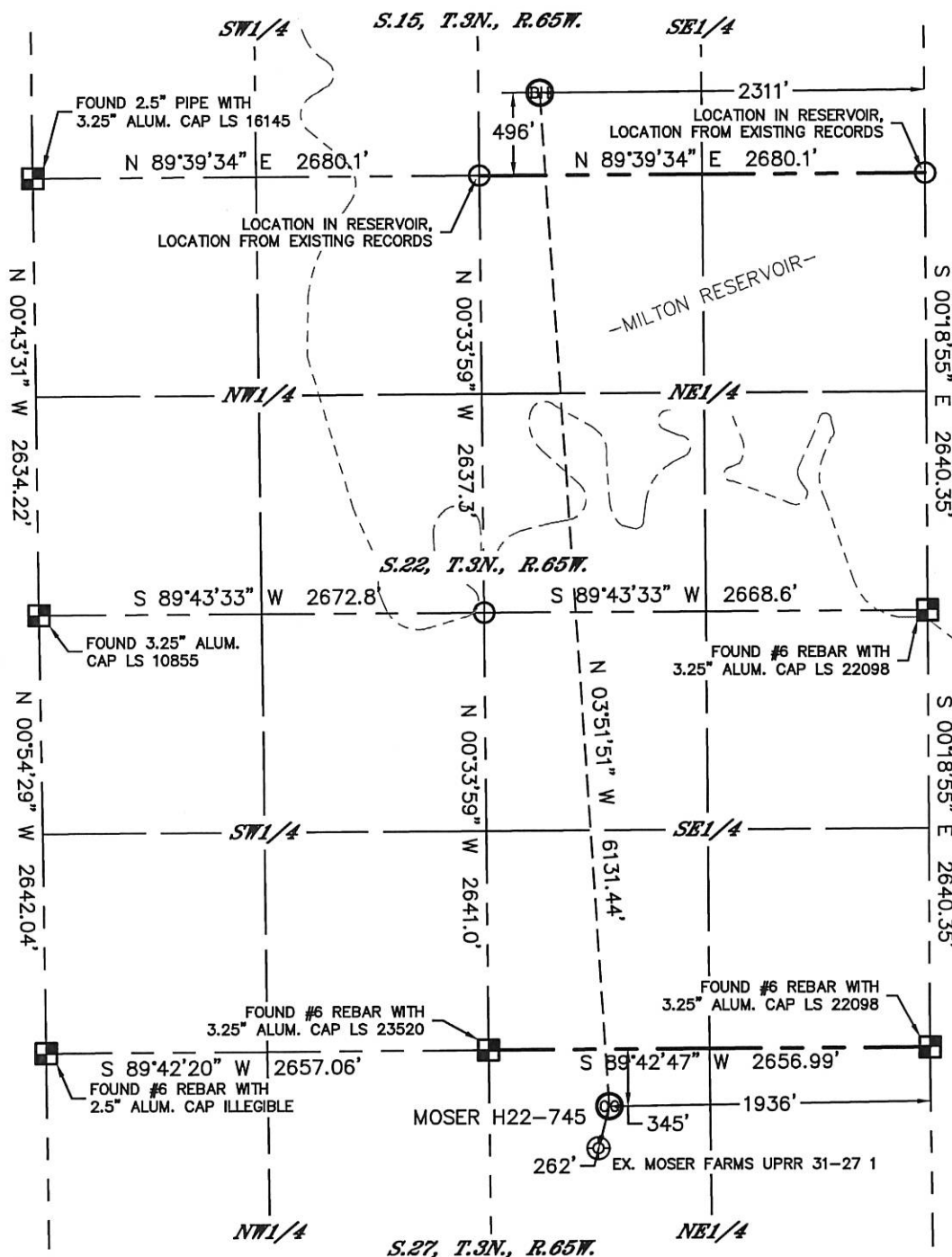


Lat40°, Inc. 1635 Foxtrail Drive, Suite 325 Loveland, CO 970-776-3321

# WELL LOCATION CERTIFICATE

THIS MAP DOES NOT REPRESENT A BOUNDARY SURVEY

SECTION: 27  
TOWNSHIP: 3N  
RANGE: 65W



### LEGEND

- - ALIQUOT MONUMENT AS DESCRIBED
- - CALCULATED POSITION



SHEET 2 OF 3

Brian T. Brinkman - Owner of Lat40°, Inc.  
Colorado Licensed Professional Land Surveyor  
Land Surveyor No. 38175  
DATE: 6/4/2014  
PROJECT#: 2013178

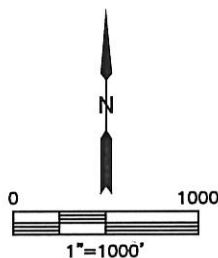
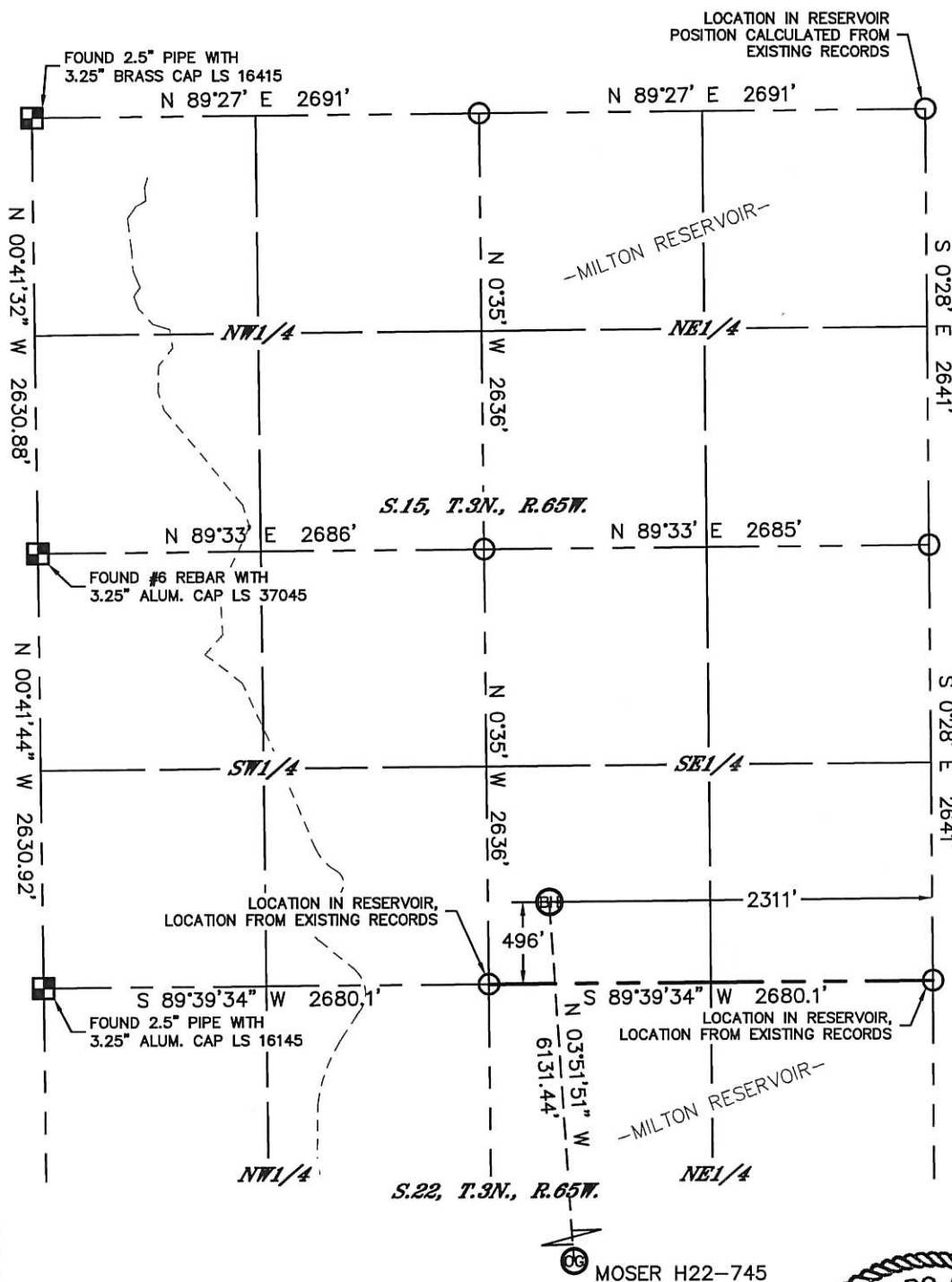


Lat40°, Inc. 1635 Foxtrail Drive, Suite 325 Loveland, CO 970-776-3321

# WELL LOCATION CERTIFICATE

THIS MAP DOES NOT REPRESENT A BOUNDARY SURVEY

SECTION: 27  
TOWNSHIP: 3N  
RANGE: 65W

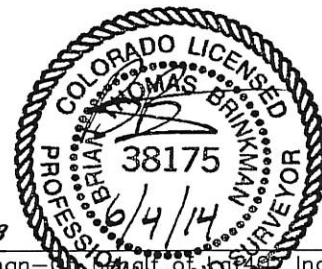


### LEGEND

- - ALIQUOT MONUMENT AS DESCRIBED
- - CALCULATED POSITION

SHEET 3 OF 3

Brian T. Brinkman - Owner of Lat40°, Inc.  
Colorado Licensed Professional Land Surveyor No. 38175  
DATE: 6/4/2014  
PROJECT#: 2013178



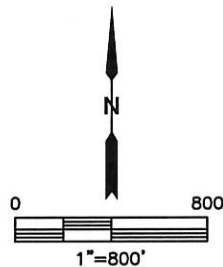
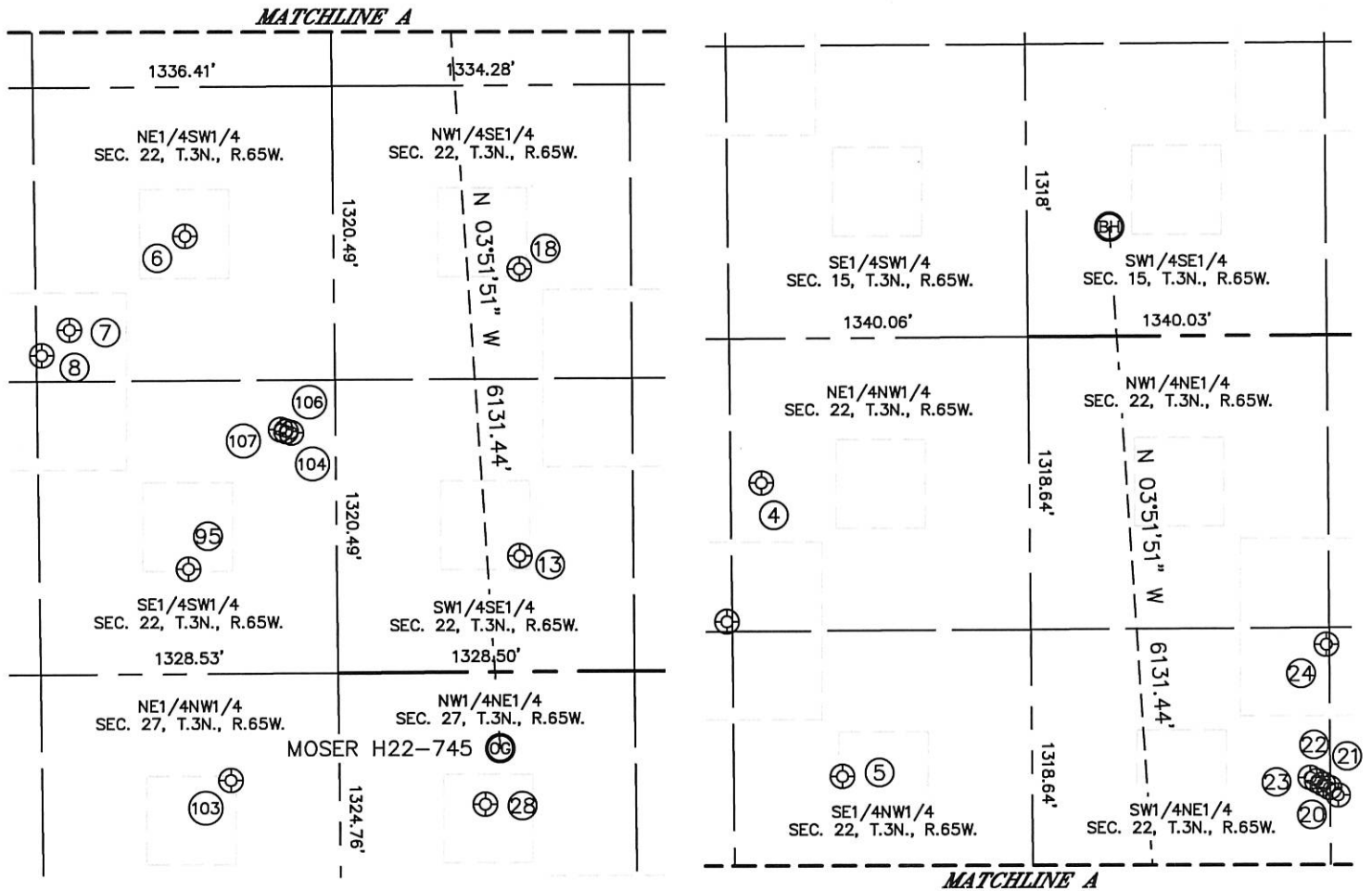


Lat40°, Inc. 1635 Foxtrail Drive, Suite 325 Loveland, CO 970-776-3321

# SITE SKETCH

MOSER H22-745

SECTION: 27  
TOWNSHIP: 3N  
RANGE: 65W



SHEET 1 OF 2

DATE: 6/4/2014  
PROJECT#: 2013178



Lat40°, Inc. 1635 Foxtrail Drive, Suite 325 Loveland, CO 970-776-3321

## SITE SKETCH

MOSER H22-745

SECTION: 27  
TOWNSHIP: 3N  
RANGE: 65W

WELL NO.	WELL NAME	SHL FOOTAGE				SHL LAT°	SHL LONG°	PDOP	ELEV (FT.)	1/4/1/4
4	FRANK 22-21	651	FNL	1476	FWL	40.21637	-104.65407	1.8	4803	NENW
5	MULVERY 22-1	1976	FNL	1824	FWL	40.21273	-104.65281	1.8	4804	SENW
6	VICTOR E GOODHARD 22-1	1971	FSL	2005	FWL	40.20908	-104.65214	1.6	4805	NESW
7	GERALD J WARDELL GAS UT #1	1551	FSL	1482	FWL	40.20793	-104.65400	1.6	4806	NESW
8	MOSER 22-35	1437	FSL	1356	FWL	40.20762	-104.65445	1.6	4807	NESW
13	HSR-DOVE 15-22	520	FSL	1840	FEL	40.20508	-104.64682	3.0	4809	SWSE
18	HSR-DODGE 10-22	1814	FSL	1834	FEL	40.20863	-104.64679	4.3	4808	NWSE
20	HSR-FRICO 8-22	2045	FNL	1339	FEL	40.21252	-104.64499	3.5	4809	SWNE
21	HSR-FRICO 1-22	2029	FNL	1367	FEL	40.21256	-104.64509	3.5	4809	SWNE
22	HSR-FRICO 2-22	2013	FNL	1397	FEL	40.21261	-104.64520	3.4	4809	SWNE
23	HSR-FRICO 7-22	1998	FNL	1426	FEL	40.21265	-104.64530	3.4	4809	SWNE
24	FRICO 17-22	1396	FNL	1351	FEL	40.21430	-104.64503	3.3	4805	SWNE
28	MOSER FARMS UPRR 31-27 #1	599	FNL	2005	FEL	40.20201	-104.64741	3.0	4813	NWNE
95	FRANK 22-34	471	FSL	1996	FWL	40.20496	-104.65213	3.6	4809	SESW
103	RITCHEY H 27-3	482	FNL	2171	FWL	40.20234	-104.65149	3.3	4812	NENW
104	MOSER PC H22-24	1081	FSL	2465	FWL	40.20663	-104.65047	1.7	4808	SESW
106	MOSER PC H22-21D	1089	FSL	2441	FWL	40.20665	-104.65055	1.7	4808	SESW
107	FRANK PC H22-20D	1097	FSL	2418	FWL	40.20667	-104.65064	1.7	4808	SESW