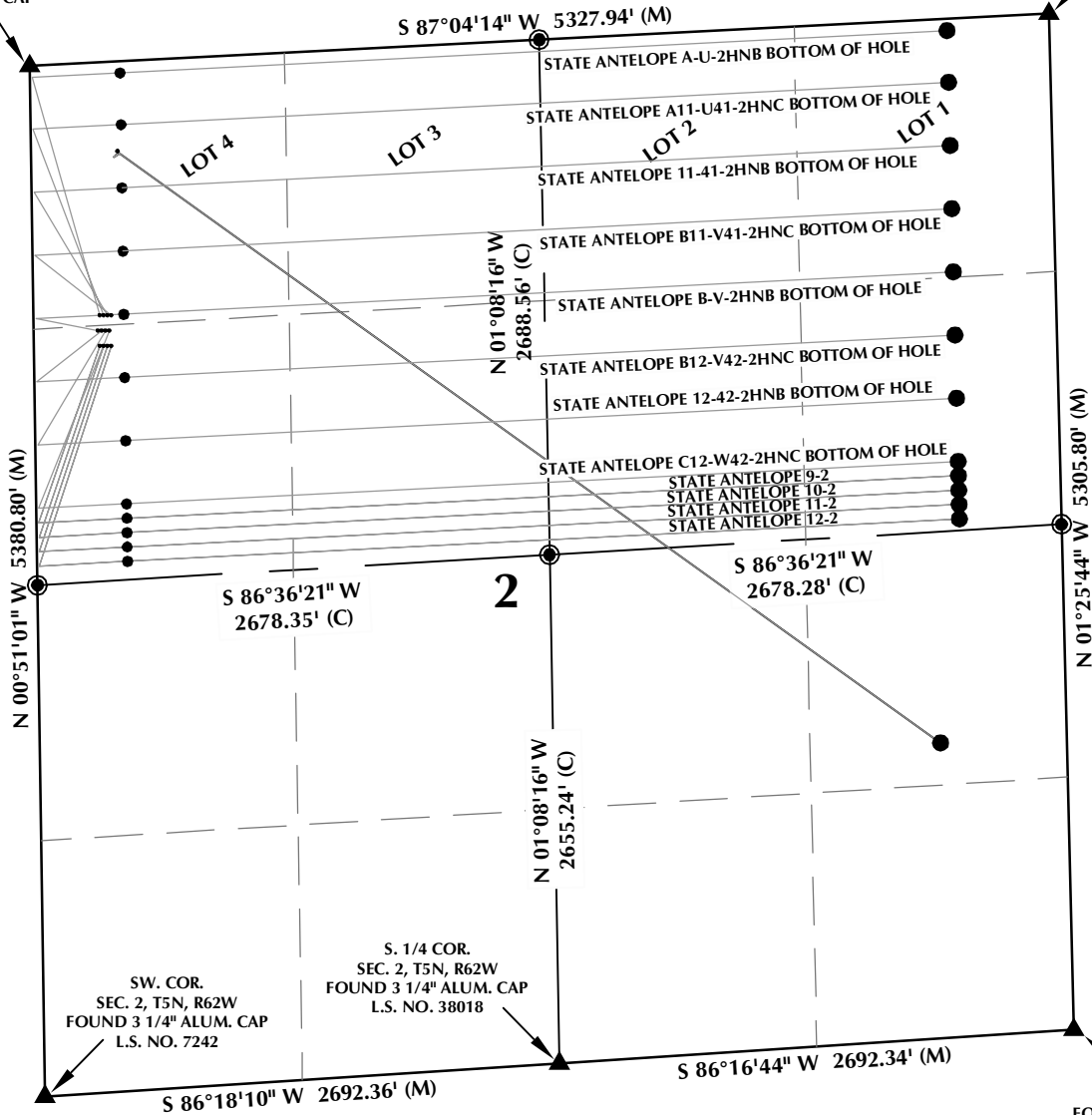


STATE ANTELOPE B-2 T5N, R62W

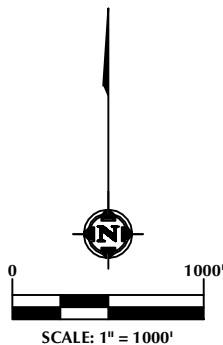
NW. COR.
SEC. 2, T5N, R62W
FOUND 3 1/4" ALUM. CAP
L.S. NO. 7242

NE. COR.
SEC. 2, T5N, R62W
FOUND 3 1/4" ALUM. CAP
L.S. NO. 32828



NOTES:

- ▲ INDICATES FOUND SECTION CORNER
- INDICATES CALCULATED CORNER
- BASIS OF BEARING DERIVED FROM COLORADO COORDINATE SYSTEM 1983 NORTH ZONE UNLESS OTHERWISE NOTED.
- ALL MEASURED DISTANCES ARE GRID.
COMBINED SCALE FACTOR: .99974109
- WELL FOOTAGES ARE MEASURED AT RIGHT ANGLES TO THE SECTION LINES.



WELL PAD - STATE ANTELOPE B-2

MULTI-WELL PLAN
STATE ANTELOPE A-U-2HNB, STATE ANTELOPE A11-U41-2HNC,
STATE ANTELOPE 11-41-2HNB, STATE ANTELOPE B11-V41-2HNC,
STATE ANTELOPE B-V-2HNB, STATE ANTELOPE B12-V42-2HNC,
STATE ANTELOPE 12-42-2HNB & STATE ANTELOPE C12-W42-2HNC
LOCATED IN SECTION 2
T5N, R62W, 6TH P.M.
WELD COUNTY, COLORADO



410 17th Street, Suite 1400
Denver, Colorado 80202



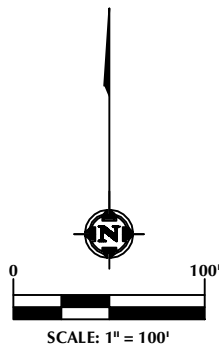
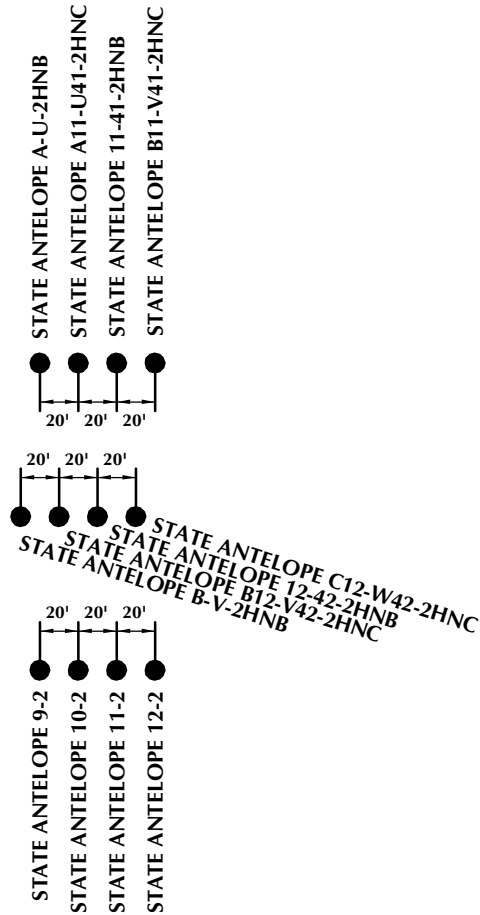
CONSULTING, LLC

SHERIDAN OFFICE
2155 North Main Street
Sheridan, Wyoming 82801
Phone 307-674-0609

LOVELAND OFFICE
1635 Foxtrail Drive, Suite 204
Loveland, Colorado 80538
Phone 970-776-4331

DRAFTED BY:	LMO	CHECKED BY:	BJR	SHEET NO:
DATE DRAFTED:	9/25/14	DATE SURVEYED:	9/23/14	1
REVISED:		FILE NAME:	14-83	1 OF 3

STATE ANTELOPE B-2 T5N, R62W



NOTES:

1. ▲ INDICATES FOUND SECTION CORNER
2. ● INDICATES CALCULATED CORNER
3. BASIS OF BEARING DERIVED FROM COLORADO COORDINATE SYSTEM 1983 NORTH ZONE UNLESS OTHERWISE NOTED.
4. ALL MEASURED DISTANCES ARE GRID.
COMBINED SCALE FACTOR: .99974109
5. WELL FOOTAGES ARE MEASURED AT RIGHT ANGLES TO THE SECTION LINES.

WELL PAD - STATE ANTELOPE B-2

MULTI-WELL PLAN
STATE ANTELOPE A-U-2HNB, STATE ANTELOPE A11-U41-2HNC,
STATE ANTELOPE 11-41-2HNB, STATE ANTELOPE B11-V41-2HNC,
STATE ANTELOPE B-V-2HNB, STATE ANTELOPE B12-V42-2HNC,
STATE ANTELOPE 12-42-2HNB & STATE ANTELOPE C12-W42-2HNC
LOCATED IN SECTION 2
T5N, R62W, 6TH P.M.
WELD COUNTY, COLORADO

BONANZA CREEK
410 17th Street, Suite 1400
Denver, Colorado 80202



CONSULTING, LLC

SHERIDAN OFFICE
2155 North Main Street
Sheridan, Wyoming 82801
Phone 307-674-0609

LOVELAND OFFICE
1635 Foxtrail Drive, Suite 204
Loveland, Colorado 80538
Phone 970-776-4331

DRAFTED BY:	LMO	CHECKED BY:	BJR	SHEET NO:
DATE DRAFTED:	9/25/14	DATE SURVEYED:	9/23/14	2
REVISED:		FILE NAME:	14-83	2 OF 3

STATE ANTELOPE B-2

T5N, R62W

WELL NOTES:

1. STATE ANTELOPE A-U-2HNB
SURFACE: 1319' FNL, 345' FWL
LATITUDE: 40.433144°
LONGITUDE: -104.298799°
2. STATE ANTELOPE A11-U41-2HNC
SURFACE: 1320' FNL, 365' FWL
LATITUDE: 40.433143°
LONGITUDE: -104.298727°
3. STATE ANTELOPE 11-41-2HNB
SURFACE: 1321' FNL, 385' FWL
LATITUDE: 40.433143°
LONGITUDE: -104.298655°
4. STATE ANTELOPE B11-V41-2HNC
SURFACE: 1322' FNL, 405' FWL
LATITUDE: 40.433142°
LONGITUDE: -104.298583°
5. STATE ANTELOPE B-V-2HNB
SURFACE: 1398' FNL, 334' FWL
LATITUDE: 40.432925°
LONGITUDE: -104.298839°
6. STATE ANTELOPE B12-V42-2HNC
SURFACE: 1399' FNL, 354' FWL
LATITUDE: 40.432924°
LONGITUDE: -104.298767°
7. STATE ANTELOPE 12-42-2HNB
SURFACE: 1400' FNL, 374' FWL
LATITUDE: 40.432923°
LONGITUDE: -104.298695°
8. STATE ANTELOPE C12-W42-2HNC
SURFACE: 1401' FNL, 394' FWL
LATITUDE: 40.432923°
LONGITUDE: -104.298623°
9. STATE ANTELOPE 9-2
SURFACE: 1478' FNL, 342' FWL
LATITUDE: 40.432705°
LONGITUDE: -104.298806°
10. STATE ANTELOPE 10-2
SURFACE: 1479' FNL, 362' FWL
LATITUDE: 40.432704°
LONGITUDE: -104.298735°
11. STATE ANTELOPE 11-2
SURFACE: 1480' FNL, 382' FWL
LATITUDE: 40.432703°
LONGITUDE: -104.298663°
12. STATE ANTELOPE 12-2
SURFACE: 1482' FNL, 402' FWL
LATITUDE: 40.432703°
LONGITUDE: -104.298591°
13. STATE ANTELOPE 11-2HZ
SURFACE: 467' FNL, 450' FWL
LATITUDE: 40.435494°
LONGITUDE: -104.298426°

WELL PATH TRAJECTORIES:

1. STATE ANTELOPE A-U-2HNB
ENTRY POINT TO BOTTOM OF HOLE:
N87°04'14"E, 4327'
2. STATE ANTELOPE A11-U41-2HNC
ENTRY POINT TO BOTTOM OF HOLE:
N87°04'14"E, 4330'
3. STATE ANTELOPE 11-41-2HNB
ENTRY POINT TO BOTTOM OF HOLE:
N87°04'14"E, 4333'
4. STATE ANTELOPE B11-V41-2HNC
ENTRY POINT TO BOTTOM OF HOLE:
N87°04'14"E, 4336'
5. STATE ANTELOPE B-V-2HNB
ENTRY POINT TO BOTTOM OF HOLE:
N87°04'14"E, 4340'
6. STATE ANTELOPE B12-V42-2HNC
ENTRY POINT TO BOTTOM OF HOLE:
N87°04'14"E, 4343'
7. STATE ANTELOPE 12-42-2HNB
ENTRY POINT TO BOTTOM OF HOLE:
N87°04'14"E, 4346'
8. STATE ANTELOPE C12-W42-2HNC
ENTRY POINT TO BOTTOM OF HOLE:
N87°04'14"E, 4350'
9. STATE ANTELOPE 9-2
ENTRY POINT TO BOTTOM OF HOLE:
N87°04'14"E, 4351'
10. STATE ANTELOPE 10-2
ENTRY POINT TO BOTTOM OF HOLE:
N87°04'14"E, 4351'
11. STATE ANTELOPE 11-2
ENTRY POINT TO BOTTOM OF HOLE:
N87°04'14"E, 4352'
12. STATE ANTELOPE 12-2
ENTRY POINT TO BOTTOM OF HOLE:
N87°04'14"E, 4353'

WELL PAD - STATE ANTELOPE B-2

MULTI-WELL PLAN
STATE ANTELOPE A-U-2HNB, STATE ANTELOPE A11-U41-2HNC,
STATE ANTELOPE 11-41-2HNB, STATE ANTELOPE B11-V41-2HNC,
STATE ANTELOPE B-V-2HNB, STATE ANTELOPE B12-V42-2HNC,
STATE ANTELOPE 12-42-2HNB & STATE ANTELOPE C12-W42-2HNC
LOCATED IN SECTION 2
T5N, R62W, 6TH P.M.
WELD COUNTY, COLORADO



410 17th Street, Suite 1400
Denver, Colorado 80202



CONSULTING, LLC

SHERIDAN OFFICE
2155 North Main Street
Sheridan, Wyoming 82801
Phone 307-674-0609

LOVELAND OFFICE
1635 Foxtrail Drive, Suite 204
Loveland, Colorado 80538
Phone 970-776-4331

DRAFTED BY:	LMO	CHECKED BY:	BJR	SHEET NO:
DATE DRAFTED:	9/25/14	DATE SURVEYED:	9/23/14	3
REVISED:		FILE NAME:	14-83	3 OF 3