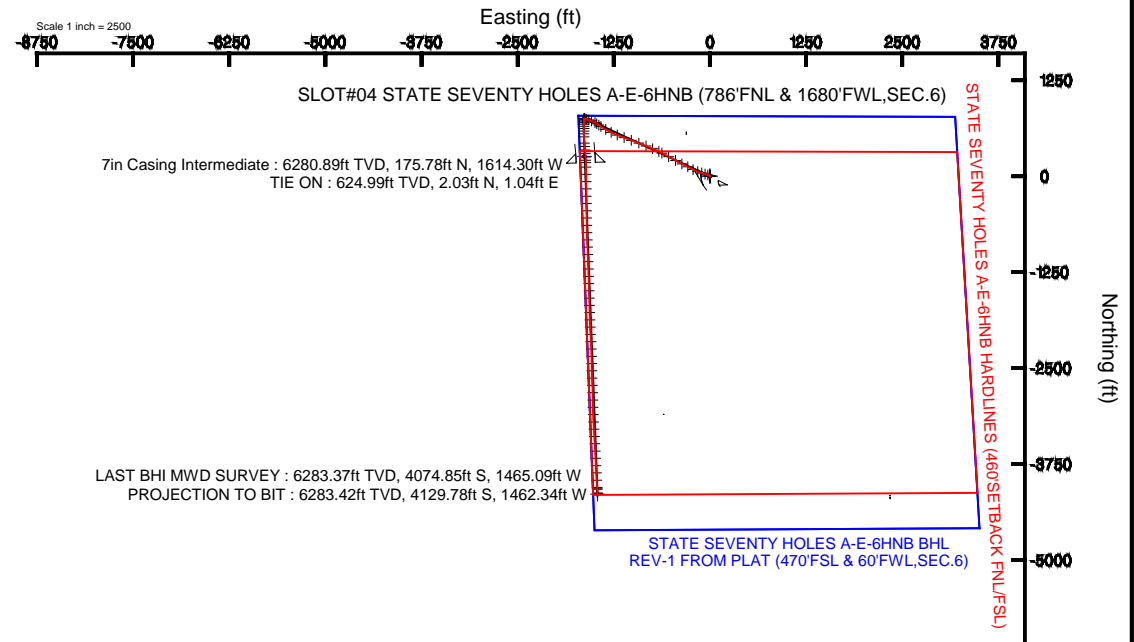
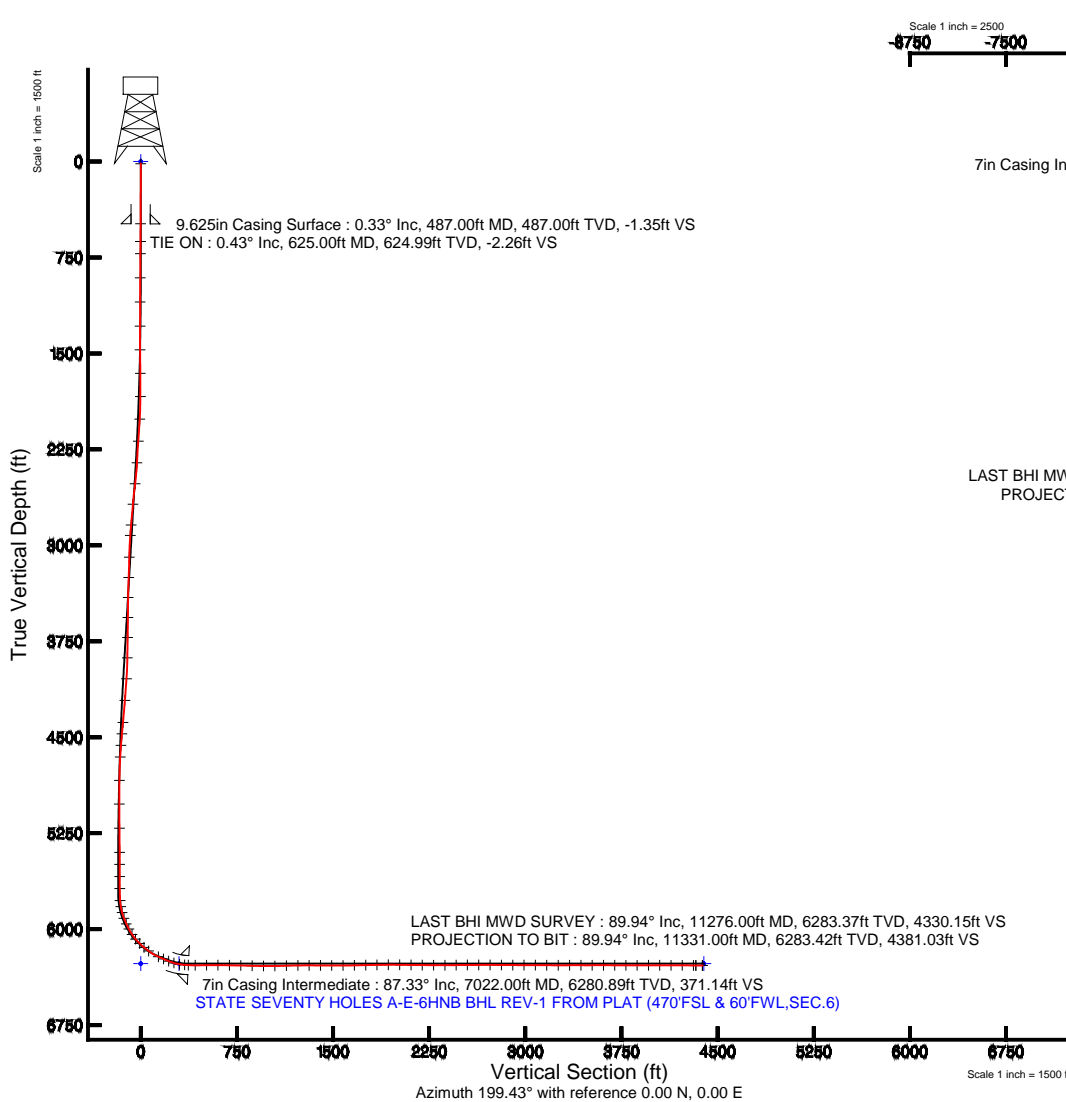


# BONANZA CREEK OIL COMPANY

Location: COLORADO Slot: SLOT#04 STATE SEVENTY HOLES A-E-6HNB (786'FNL & 1680'FWL, SEC.6)  
 Field: WELD COUNTY Well: STATE SEVENTY HOLES A-E-6HNB  
 Facility: SEC.06-T4N-R62W Wellbore: STATE SEVENTY HOLES A-E-6HNB PWB



Location Information					
Facility Name		Grid East (US F)	Grid North (US F)	Latitude	Longitude
SEC.06-T4N-R62W		3244501.803	168114.000	37°20'10.2467"N	104°22'24.8167"W
Well	Local N (F)	Local E (F)	Grid East (US F)	Grid North (US F)	Latitude
SLOT#04 STATE SEVENTY HOLES A-E-6HNB (786'FNL & 1680'FWL, SEC.6)	3103.00	602.00	3244501.803	168114.000	37°20'10.2467"N
CODE 26 (9980) to Mean Sea Level					4000
Mean Sea Level to Mean Sea Level					00
CODE 26 (9980) to Mean Sea Level					4000



N  
TRUE  
W ← → E

BGGM (1945.0 to 2016.0) Dip: 66.96° Field: 52710 nT  
 Magnetic North is 8.31 degrees East of True North (at 8/13/2014)

To correct azimuth from Magnetic to True add 8.31 degrees

Data reference wellbore is STATE SEVENTY HOLES A-E-6HNB (REV-1) 2178P	
True vertical depths are referenced to CODE 26 (9980)	Grid System: NAD83 Lambert Colorado SP Northern Zone (SIC), US feet
Measured depths are referenced to CODE 26 (9980)	North Reference: True north
CODE 26 (9980) to Mean Sea Level: 4000 feet	Scale: True distance
Mean Sea Level to Mean Sea Level: 0 feet	Depth: in feet
Coordinates are in feet referenced to State	Created by: cshelton on 11/11/2014



# Actual Wellpath Report

## STATE SEVENTY HOLES A-E-6HNB AWP

Page 1 of 5



### REFERENCE WELLPATH IDENTIFICATION

Operator	BONANZA CREEK OIL COMPANY	Slot	SLOT#04 STATE SEVENTY HOLES A-E-6HNB (786'FNL & 1680'FWL,SE
Area	COLORADO	Well	STATE SEVENTY HOLES A-E-6HNB
Field	WELD COUNTY	Wellbore	STATE SEVENTY HOLES A-E-6HNB AWP
Facility	SEC.06-T4N-R62W		

### REPORT SETUP INFORMATION

Projection System	NAD83 / Lambert Colorado SP, Northern Zone (501), US feet	Software System	WellArchitect® 4.0.0
North Reference	True	User	Caselau
Scale	0.999958	Report Generated	11/11/2014 at 2:37:11 PM
Convergence at slot	n/a	Database/Source file	WA_Denver/STATE_SEVENTY_HOLES_A-E-6HNB_AWP.xml

### WELLPATH LOCATION

	Local coordinates		Grid coordinates		Geographic coordinates	
	North[ft]	East[ft]	Easting[US ft]	Northing[US ft]	Latitude	Longitude
Slot Location	3103.92	602.08	3314564.40	1371225.44	40°20'48.912"N	104°22'17.040"W
Facility Reference Pt			3314001.82	1368114.27	40°20'18.240"N	104°22'24.816"W
Field Reference Pt			3335925.10	1457282.25	40°34'56.460"N	104°17'26.016"W

### WELLPATH DATUM

Calculation method	Minimum curvature	CADE 26 (RKB) to Facility Vertical Datum	4555.00ft
Horizontal Reference Pt	Slot	CADE 26 (RKB) to Mean Sea Level	4555.00ft
Vertical Reference Pt	CADE 26 (RKB)	CADE 26 (RKB) to Mud Line at Slot (SLOT#04 STATE SEVENTY HOLES A-E-6HNB (786'FNL & 1680'FWL,SEC.6))	4555.00ft
MD Reference Pt	CADE 26 (RKB)	Section Origin	N 0.00, E 0.00 ft
Field Vertical Reference	Mean Sea Level	Section Azimuth	199.43°



# Actual Wellpath Report

## STATE SEVENTY HOLES A-E-6HNB AWP

Page 2 of 5



REFERENCE WELLPATH IDENTIFICATION			
Operator	BONANZA CREEK OIL COMPANY	Slot	SLOT#04 STATE SEVENTY HOLES A-E-6HNB (786'FNL & 1680'FWL,SE
Area	COLORADO	Well	STATE SEVENTY HOLES A-E-6HNB
Field	WELD COUNTY	Wellbore	STATE SEVENTY HOLES A-E-6HNB AWP
Facility	SEC.06-T4N-R62W		

WELLPATH DATA (98 stations)									
MD [ft]	Inclination [°]	Azimuth [°]	TVD [ft]	Vert Sect [ft]	North [ft]	East [ft]	DLS [°/100ft]	Comments	
625.00	0.430	27.000	624.99	-2.26	2.03	1.04	0.07	TIE ON	
720.00	0.370	18.970	719.99	-2.92	2.64	1.30	0.09		
909.00	0.260	10.660	908.99	-3.96	3.64	1.58	0.06		
1098.00	5.250	290.590	1097.72	-4.56	7.10	-6.45	2.76		
1288.00	9.200	292.260	1286.18	-5.48	15.92	-28.65	2.08		
1477.00	12.840	286.520	1471.67	-5.16	27.62	-62.78	2.01		
1667.00	15.510	288.090	1655.86	-3.50	41.51	-107.17	1.42		
1856.00	18.280	289.770	1836.69	-3.09	59.39	-159.10	1.49		
2045.00	22.470	297.070	2013.85	-8.07	85.87	-219.19	2.59		
2234.00	25.930	298.080	2186.22	-19.10	121.76	-287.83	1.84		
2423.00	28.150	295.070	2354.56	-29.70	160.11	-364.69	1.38		
2612.00	31.420	300.930	2518.60	-43.92	204.35	-447.37	2.31		
2802.00	33.620	297.350	2678.82	-61.05	253.98	-536.59	1.54		
2992.00	29.620	297.810	2840.58	-75.15	300.07	-624.87	2.11		
3086.00	28.030	297.870	2922.93	-81.78	321.23	-664.95	1.69		
3277.00	26.690	291.180	3092.60	-89.68	357.72	-744.64	1.75		
3461.00	33.380	293.080	3251.80	-94.18	392.53	-829.84	3.67		
3647.00	32.990	290.630	3407.48	-98.50	430.43	-924.31	0.75		
3835.00	34.180	290.290	3564.09	-100.37	466.78	-1021.74	0.64		
4021.00	31.840	291.000	3720.05	-102.51	502.49	-1116.56	1.28		
4206.00	29.290	290.210	3879.34	-104.47	535.61	-1204.60	1.40		
4391.00	26.380	298.070	4042.97	-111.27	570.60	-1283.38	2.53		
4578.00	24.960	298.840	4211.51	-123.96	609.19	-1354.60	0.78		
4766.00	20.890	303.630	4384.64	-138.68	646.90	-1417.29	2.38		
4861.00	20.000	303.370	4473.65	-146.75	665.22	-1444.96	0.94		
4956.00	18.410	303.350	4563.36	-154.28	682.40	-1471.06	1.67		
5051.00	16.450	299.610	4654.00	-160.27	697.30	-1495.29	2.38		
5240.00	13.980	292.780	4836.38	-166.34	719.37	-1539.61	1.61		
5430.00	9.340	288.080	5022.41	-167.32	733.04	-1575.45	2.49		
5620.00	7.660	285.010	5210.32	-165.98	741.11	-1602.34	0.92		
5810.00	4.950	288.750	5399.15	-164.91	747.03	-1622.34	1.44		
5905.00	3.700	290.560	5493.88	-164.92	749.42	-1629.09	1.32		
6000.00	2.020	279.320	5588.76	-164.69	750.77	-1633.61	1.86		
6094.00	1.830	277.790	5682.70	-164.09	751.24	-1636.73	0.21		
6188.00	4.940	152.960	5776.60	-161.00	747.83	-1636.38	6.56		
6235.00	10.210	171.030	5823.18	-155.94	741.91	-1634.81	12.17		
6283.00	16.160	181.440	5869.90	-145.83	731.02	-1634.31	13.30		
6330.00	21.520	184.450	5914.36	-131.27	715.88	-1635.15	11.59		
6378.00	25.030	183.080	5958.45	-113.02	696.95	-1636.38	7.40		
6424.00	29.660	180.050	5999.30	-92.93	675.84	-1636.91	10.51		
6473.00	35.230	179.410	6040.64	-68.19	649.57	-1636.78	11.39		
6520.00	41.670	180.510	6077.42	-40.65	620.36	-1636.77	13.78		
6568.00	47.450	180.680	6111.61	-8.78	586.69	-1637.13	12.04		
6615.00	52.240	181.290	6141.91	25.29	550.79	-1637.75	10.24		
6663.00	55.090	177.460	6170.35	61.59	512.14	-1637.31	8.75		



# Actual Wellpath Report

## STATE SEVENTY HOLES A-E-6HNB AWP

Page 3 of 5



REFERENCE WELLPATH IDENTIFICATION			
Operator	BONANZA CREEK OIL COMPANY	Slot	SLOT#04 STATE SEVENTY HOLES A-E-6HNB (786'FNL & 1680'FWL,SE
Area	COLORADO	Well	STATE SEVENTY HOLES A-E-6HNB
Field	WELD COUNTY	Wellbore	STATE SEVENTY HOLES A-E-6HNB AWP
Facility	SEC.06-T4N-R62W		

WELLPATH DATA (98 stations)								
MD [ft]	Inclination [°]	Azimuth [°]	TVD [ft]	Vert Sect [ft]	North [ft]	East [ft]	DLS [°/100ft]	Comments
6757.00	67.480	175.200	6215.43	137.23	430.04	-1631.94	13.35	
6804.00	69.350	175.390	6232.72	177.11	386.49	-1628.36	4.00	
6852.00	69.700	174.350	6249.51	218.01	341.70	-1624.34	2.16	
6899.00	74.560	175.670	6263.93	258.73	297.15	-1620.46	10.68	
6948.00	81.180	176.710	6274.22	302.73	249.38	-1617.28	13.67	
6991.00	85.900	178.090	6279.06	342.32	206.71	-1615.34	11.43	
7079.00	89.970	177.960	6282.23	424.18	118.84	-1612.31	4.63	
7174.00	91.020	178.870	6281.41	512.86	23.88	-1609.69	1.46	
7269.00	89.480	179.560	6281.00	602.01	-71.11	-1608.38	1.78	
7364.00	88.950	179.390	6282.30	691.30	-166.10	-1607.51	0.59	
7459.00	88.950	179.500	6284.04	780.56	-261.07	-1606.59	0.12	
7553.00	88.660	179.300	6286.00	868.86	-355.05	-1605.61	0.37	
7648.00	89.440	178.890	6287.57	957.93	-450.02	-1604.11	0.93	
7743.00	90.710	178.610	6287.45	1046.81	-545.00	-1602.04	1.37	
7838.00	91.830	180.340	6285.34	1136.08	-639.97	-1601.17	2.17	
7934.00	90.490	177.800	6283.40	1226.06	-735.92	-1599.61	2.99	
8028.00	89.850	177.240	6283.12	1313.27	-829.83	-1595.54	0.90	
8123.00	89.940	177.730	6283.29	1401.39	-924.74	-1591.37	0.52	
8218.00	89.260	177.800	6283.96	1489.67	-1019.67	-1587.67	0.72	
8313.00	90.590	177.590	6284.08	1577.92	-1114.59	-1583.85	1.42	
8408.00	90.900	178.290	6282.85	1666.31	-1209.52	-1580.43	0.81	
8503.00	91.550	178.620	6280.82	1755.00	-1304.46	-1577.87	0.77	
8597.00	90.430	177.350	6279.19	1842.47	-1398.39	-1574.57	1.80	
8692.00	90.800	178.360	6278.17	1930.81	-1493.31	-1571.01	1.13	
8787.00	88.890	177.870	6278.43	2019.31	-1588.26	-1567.89	2.08	
8882.00	89.630	179.270	6279.66	2108.08	-1683.22	-1565.52	1.67	
8976.00	89.380	177.600	6280.47	2195.83	-1777.17	-1562.95	1.80	
9071.00	89.750	178.370	6281.19	2284.25	-1872.11	-1559.61	0.90	
9166.00	89.480	178.080	6281.83	2372.82	-1967.06	-1556.67	0.42	
9261.00	91.760	176.400	6280.80	2460.77	-2061.94	-1552.09	2.98	
9356.00	89.690	177.130	6279.60	2548.43	-2156.77	-1546.73	2.31	
9451.00	90.490	177.590	6279.45	2636.47	-2251.67	-1542.36	0.97	
9546.00	89.720	178.330	6279.27	2724.88	-2346.61	-1538.98	1.12	
9641.00	89.570	178.730	6279.86	2813.62	-2441.58	-1536.54	0.45	
9735.00	89.600	179.370	6280.54	2901.74	-2535.56	-1534.98	0.68	
9830.00	89.970	177.010	6280.90	2990.28	-2630.50	-1531.98	2.51	
9925.00	89.910	177.760	6281.00	3078.34	-2725.41	-1527.65	0.79	
10020.00	89.350	177.980	6281.61	3166.69	-2820.34	-1524.11	0.63	
10116.00	89.910	179.230	6282.23	3256.42	-2916.30	-1521.78	1.43	
10211.00	90.460	178.290	6281.93	3345.30	-3011.28	-1519.72	1.15	
10306.00	89.630	177.540	6281.85	3433.68	-3106.22	-1516.27	1.18	
10401.00	90.310	177.360	6281.90	3521.78	-3201.12	-1512.04	0.74	
10496.00	89.880	176.890	6281.74	3609.67	-3296.00	-1507.27	0.67	
10591.00	89.690	176.330	6282.10	3697.24	-3390.83	-1501.66	0.62	
10686.00	89.940	176.850	6282.41	3784.79	-3485.66	-1496.01	0.61	



# Actual Wellpath Report

## STATE SEVENTY HOLES A-E-6HNB AWP

Page 4 of 5



### REFERENCE WELLPATH IDENTIFICATION

Operator	BONANZA CREEK OIL COMPANY	Slot	SLOT#04 STATE SEVENTY HOLES A-E-6HNB (786'FNL & 1680'FWL,SE
Area	COLORADO	Well	STATE SEVENTY HOLES A-E-6HNB
Field	WELD COUNTY	Wellbore	STATE SEVENTY HOLES A-E-6HNB AWB
Facility	SEC.06-T4N-R62W		

### WELLPATH DATA (98 stations)

MD [ft]	Inclination [°]	Azimuth [°]	TVD [ft]	Vert Sect [ft]	North [ft]	East [ft]	DLS [°/100ft]	Comments
10781.00	90.030	177.120	6282.43	3872.60	-3580.53	-1491.01	0.30	
10876.00	90.220	177.310	6282.23	3960.55	-3675.42	-1486.39	0.28	
10971.00	89.880	177.210	6282.14	4048.52	-3770.31	-1481.85	0.37	
11066.00	89.790	176.860	6282.42	4136.36	-3865.18	-1476.94	0.38	
11161.00	89.690	176.600	6282.85	4224.00	-3960.03	-1471.52	0.29	
11256.00	89.750	176.900	6283.31	4311.66	-4054.87	-1466.13	0.32	
11276.00	89.940	177.130	6283.37	4330.15	-4074.85	-1465.09	1.49	LAST BHI MWD SURVEY
11331.00	89.940	177.130	6283.42	4381.03	-4129.78	-1462.34	0.00	PROJECTION TO BIT

### HOLE & CASING SECTIONS -

Ref Wellbore: STATE SEVENTY HOLES A-E-6HNB AWB      Ref Wellpath: STATE SEVENTY HOLES A-E-6HNB AWP

String/Diameter	Start MD [ft]	End MD [ft]	Interval [ft]	Start TVD [ft]	End TVD [ft]	Start N/S [ft]	Start E/W [ft]	End N/S [ft]	End E/W [ft]
9.625in Casing Surface	17.00	487.00	470.00	17.00	487.00	0.00	0.00	1.21	0.62
8.75in Open Hole	487.00	8283.00	7796.00	487.00	6284.28	1.21	0.62	-1084.61	-1585.09
7in Casing Intermediate	17.00	7022.00	7005.00	17.00	6280.89	0.00	0.00	175.78	-1614.30
6.125in Open Hole	8283.00	11331.00	3048.00	6284.28	6283.42	-1084.61	-1585.09	-4129.78	-1462.34

### TARGETS

Name	MD [ft]	TVD [ft]	North [ft]	East [ft]	Grid East [US ft]	Grid North [US ft]	Latitude	Longitude	Shape
STATE SEVENTY HOLES A-E-6HNB SECTION 6		0.00	0.00	0.00	3314564.40	1371225.44	40°20'48.912"N	104°22'17.040"W	polygon
STATE SEVENTY HOLES A-E-6HNB BHL REV-1 FROM PLAT (470'FSL & 60'FWL,SEC.6)		6269.00	-4142.14	-1460.85	3313156.45	1367065.22	40°20'07.980"N	104°22'35.904"W	point
STATE SEVENTY HOLES A-E-6HNB HARDLINES (460' SETBACK)		6269.00	0.00	0.00	3314564.40	1371225.44	40°20'48.912"N	104°22'17.040"W	polygon
STATE SEVENTY HOLES A-E-6HNB HARDLINES (460'SETBACK FNL/FSL)		6269.00	0.00	0.00	3314564.40	1371225.44	40°20'48.912"N	104°22'17.040"W	polygon
STATE SEVENTY HOLES A-E-6HNB TARGET		6269.00	258.71	-1630.62	3312930.70	1371463.37	40°20'51.468"N	104°22'38.100"W	point

### WELLPATH COMPOSITION -

Ref Wellbore: STATE SEVENTY HOLES A-E-6HNB AWB      Ref Wellpath: STATE SEVENTY HOLES A-E-6HNB AWP

Start MD [ft]	End MD [ft]	Positional Uncertainty Model	Log Name/Comment	Wellbore
17.00	6991.00	NaviTrak (MagCorr)	BHI/Navitrak MWD 8.75" Hole <17'-6991">	STATE SEVENTY HOLES A-E-6HNB AWB
6991.00	11276.00	NaviTrak (Standard)	BHI/Navitrak MWD 6.125" Hole <6991'-11276">	STATE SEVENTY HOLES A-E-6HNB AWB
11276.00	11331.00	Blind Drilling (std)	Projection to bit	STATE SEVENTY HOLES A-E-6HNB AWB



# Actual Wellpath Report

STATE SEVENTY HOLES A-E-6HNB AWP  
Page 5 of 5



## REFERENCE WELLPATH IDENTIFICATION

Operator	BONANZA CREEK OIL COMPANY	Slot	SLOT#04 STATE SEVENTY HOLES A-E-6HNB (786'FNL & 1680'FWL,SE
Area	COLORADO	Well	STATE SEVENTY HOLES A-E-6HNB
Field	WELD COUNTY	Wellbore	STATE SEVENTY HOLES A-E-6HNB AWB
Facility	SEC.06-T4N-R62W		

## WELLPATH COMMENTS

MD [ft]	Inclination [°]	Azimuth [°]	TVD [ft]	Comment
625.00	0.430	27.000	624.99	TIE ON
11276.00	89.940	177.130	6283.37	LAST BHI MWD SURVEY
11331.00	89.940	177.130	6283.42	PROJECTION TO BIT