

Resolute E25-63HN

MD
1" : 100'

Company: Noble Energy Inc
Well Name: Resolute E25-63HN

API: 05-123-38158

Rig Id: Precision 828

State: Colorado

County/Parish: Weld

Country: USA

Survey Company: Ensign Directional

Job number: 207-P828-32

Company Man 1 Gary Stapleton

Directional Driller 1 Tyler Batchelder

Directional Driller 2 Matt Mason

MWD 1 Nick Jones

MWD 2 Damien Hunter

Log measurements: Gamma

Depth measured from: KB

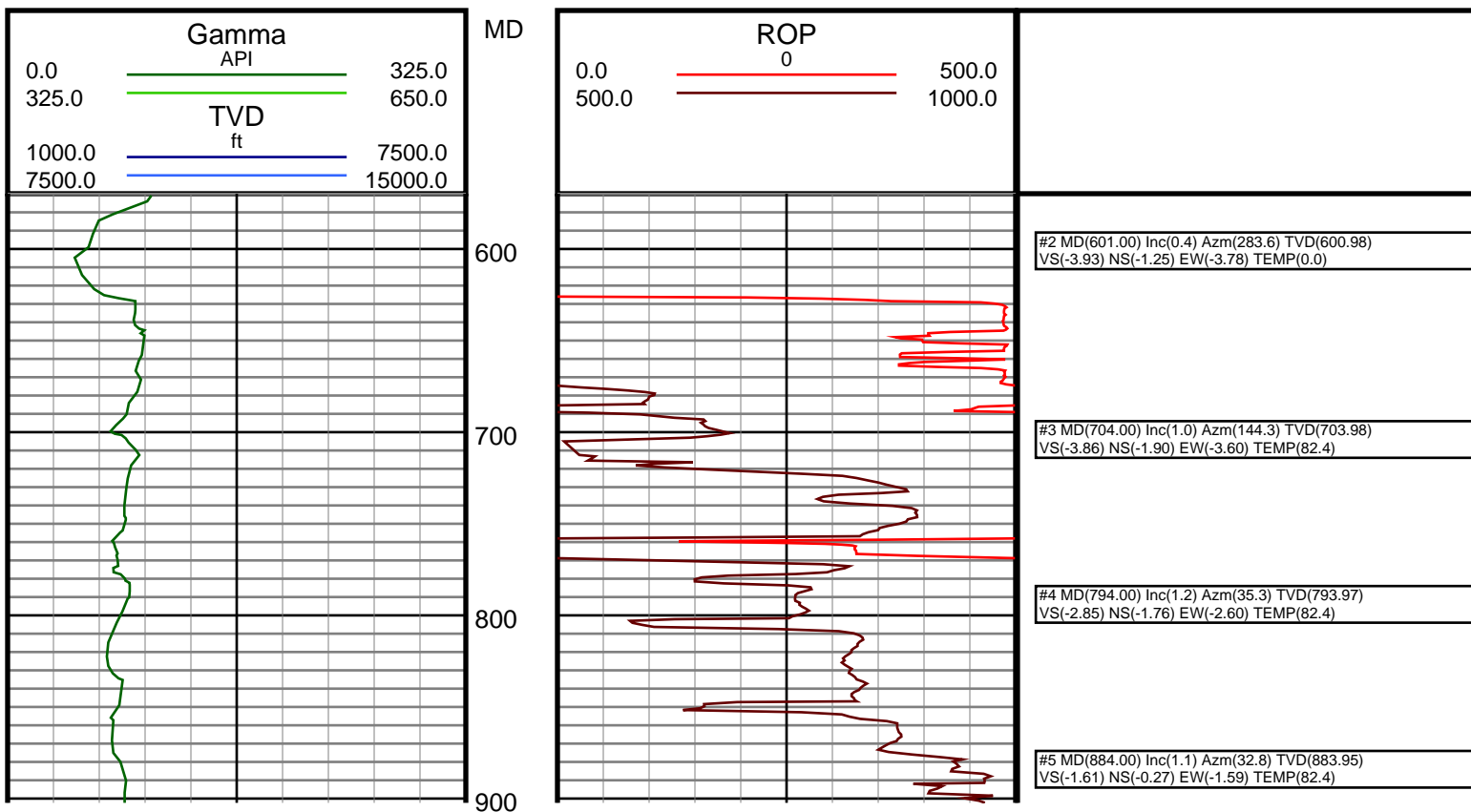
Maximum temperature:

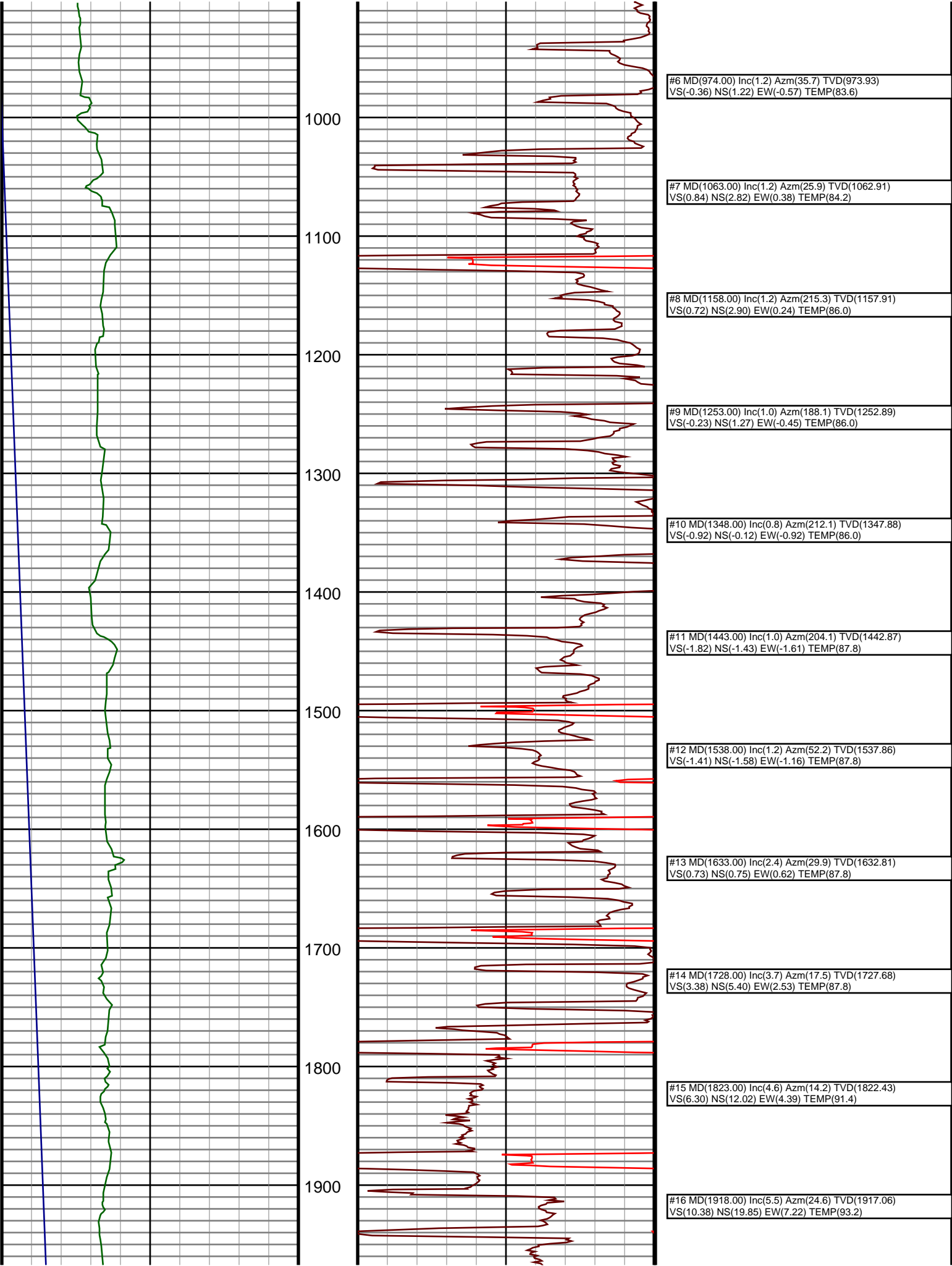
Depth Date
Start: 630 ft 5/30/2014
End: 11151 ft 6/5/2014

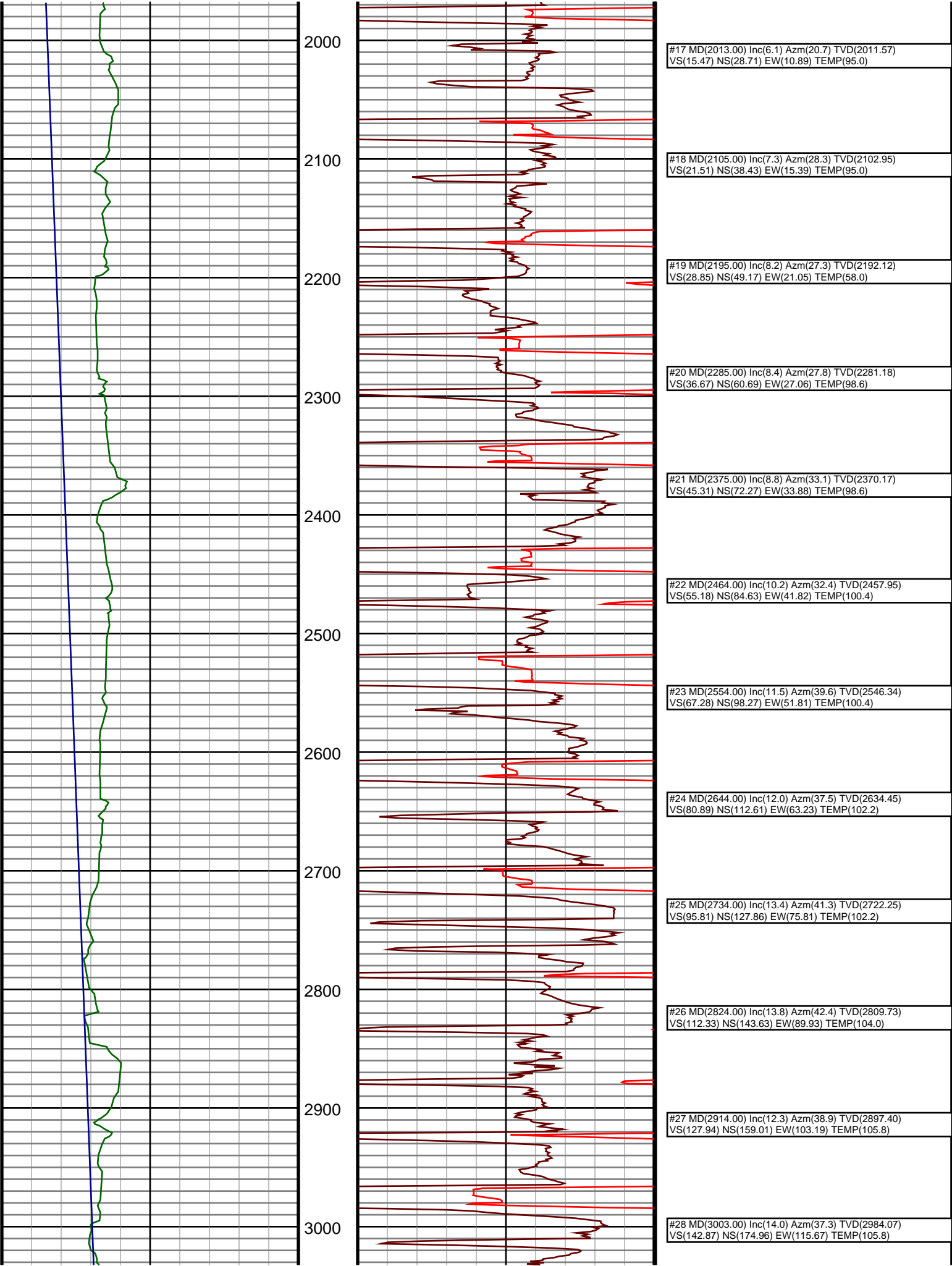
Casing	Depth	Size	Mud Type:	Water Based	Elevations
Surface:	616	9.625	Density:		KB: 4692
Intermediate:	7224	7	Viscosity:		GL: 4676
			Rm:	Rmf:	DF: 4692

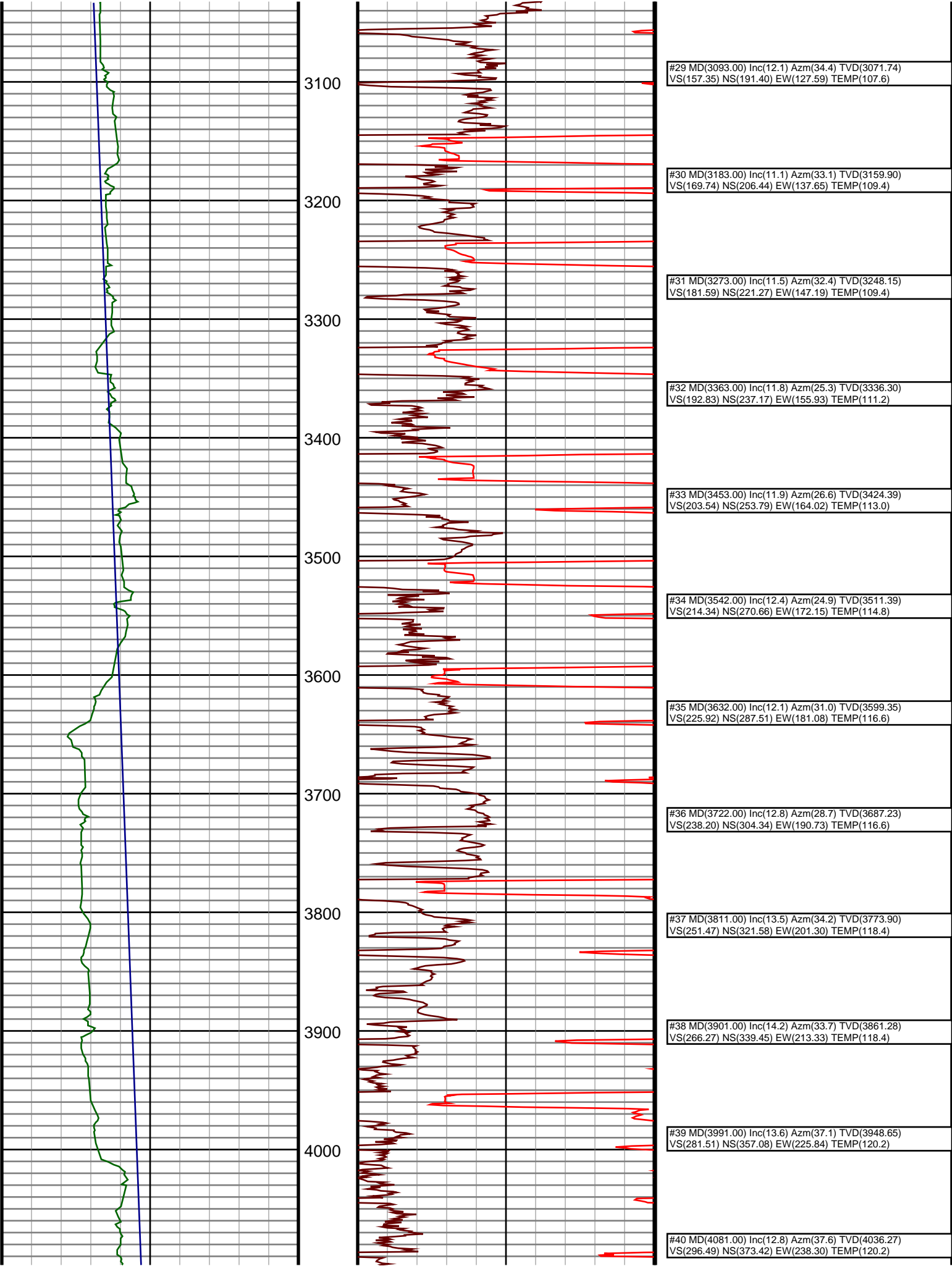
Run	Bit Size	Offsets	Gamma	Survey	Start	End	Start	End	Dates
1	8 3/4	56.17	51.17	626	7234	11151	5/30/2014	6/1/2014	
2	6 1/8	61.13	56.13	7234			6/3/2014	6/5/2014	
3									
4									
5									
6									
7									
8									
9									
10									

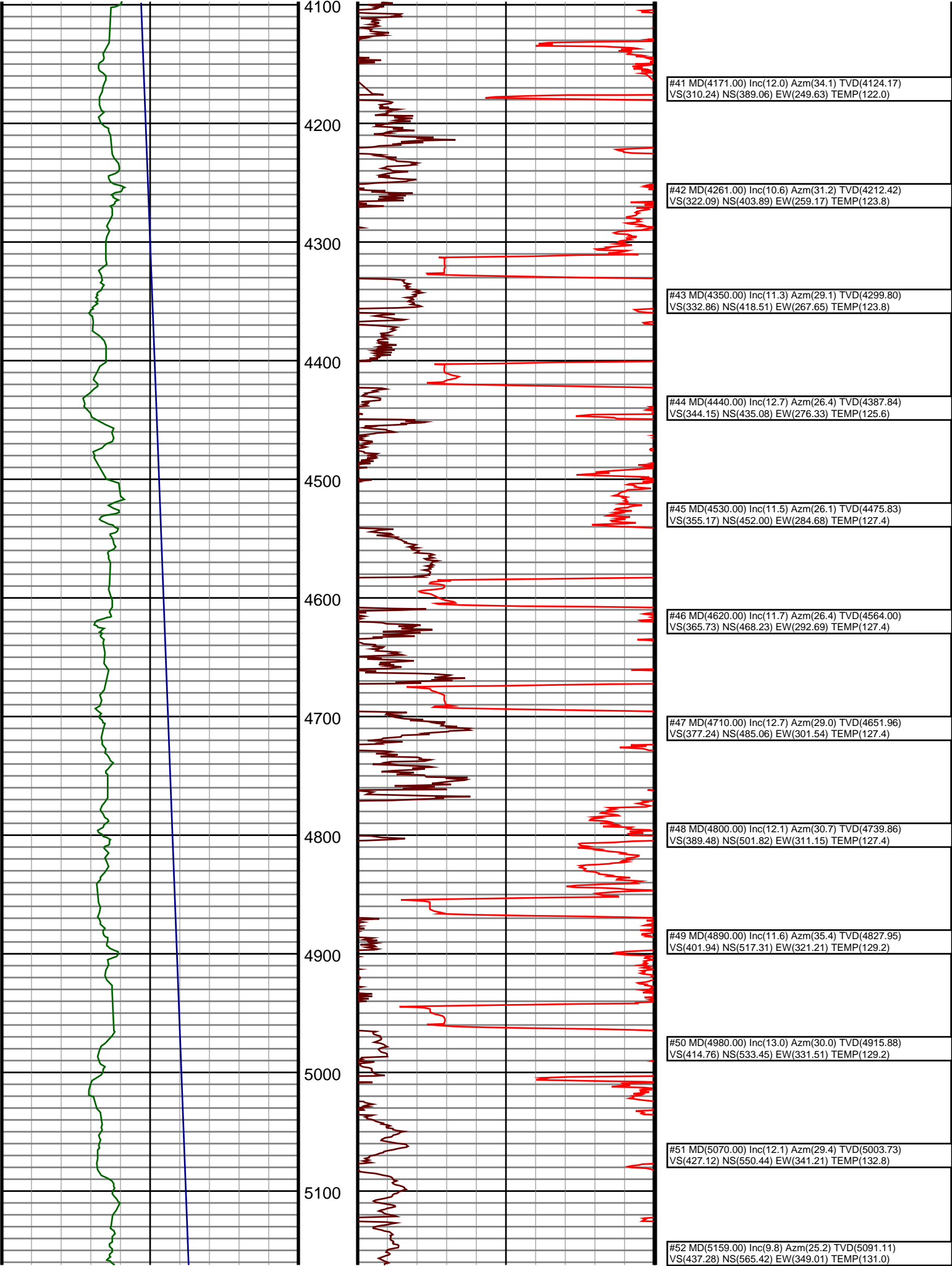
Ensign Directional uses its best efforts to provide its customers with accurate information and interpretations in conjunction with services performed but will not be held liable or responsible for the accuracy of such information or interpretation.

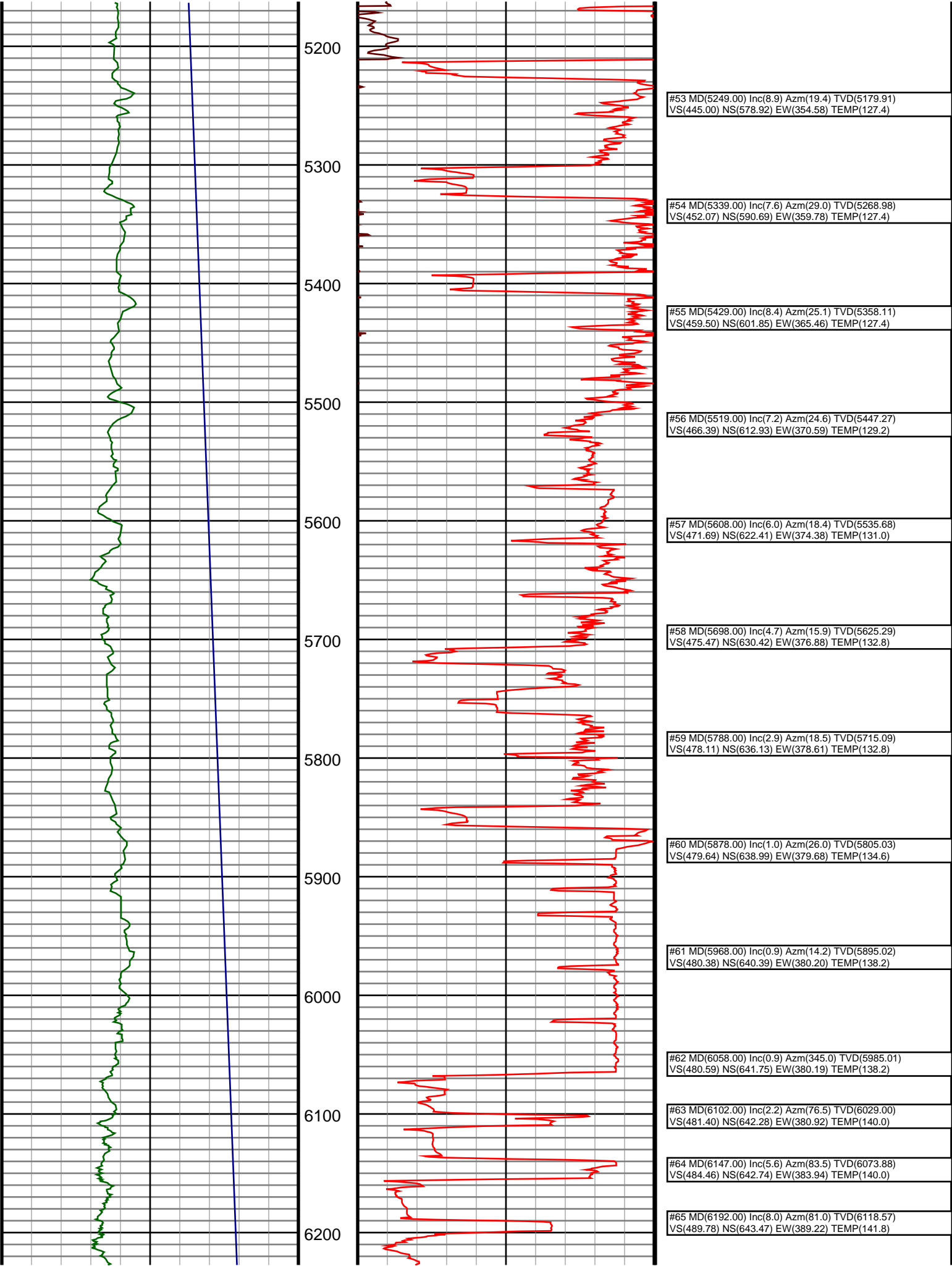


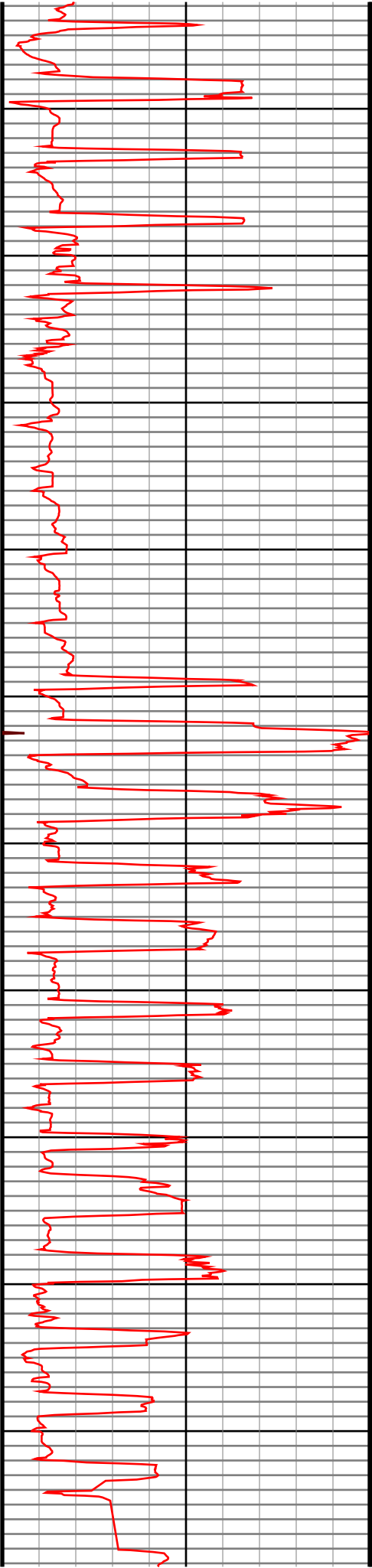
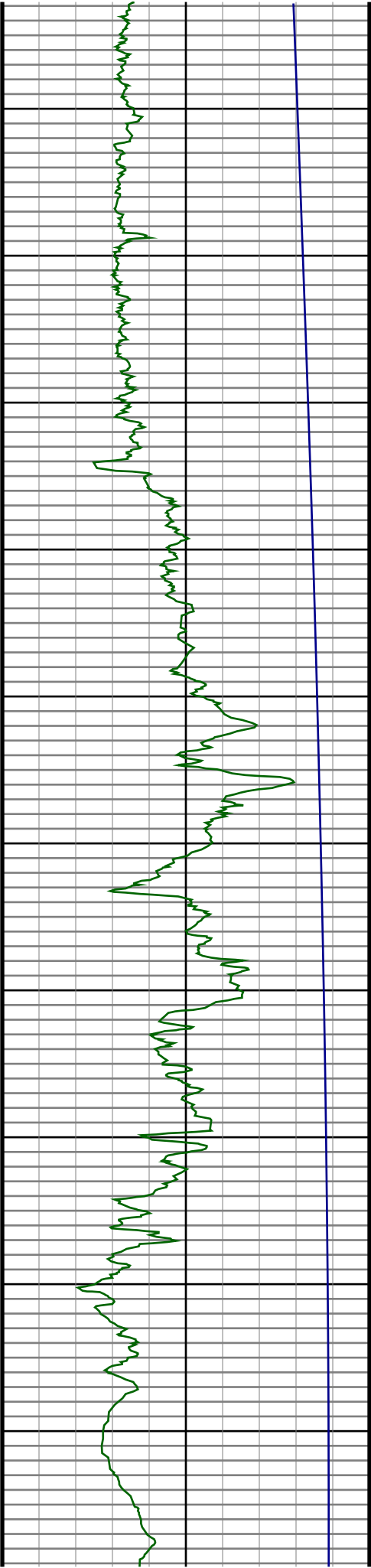




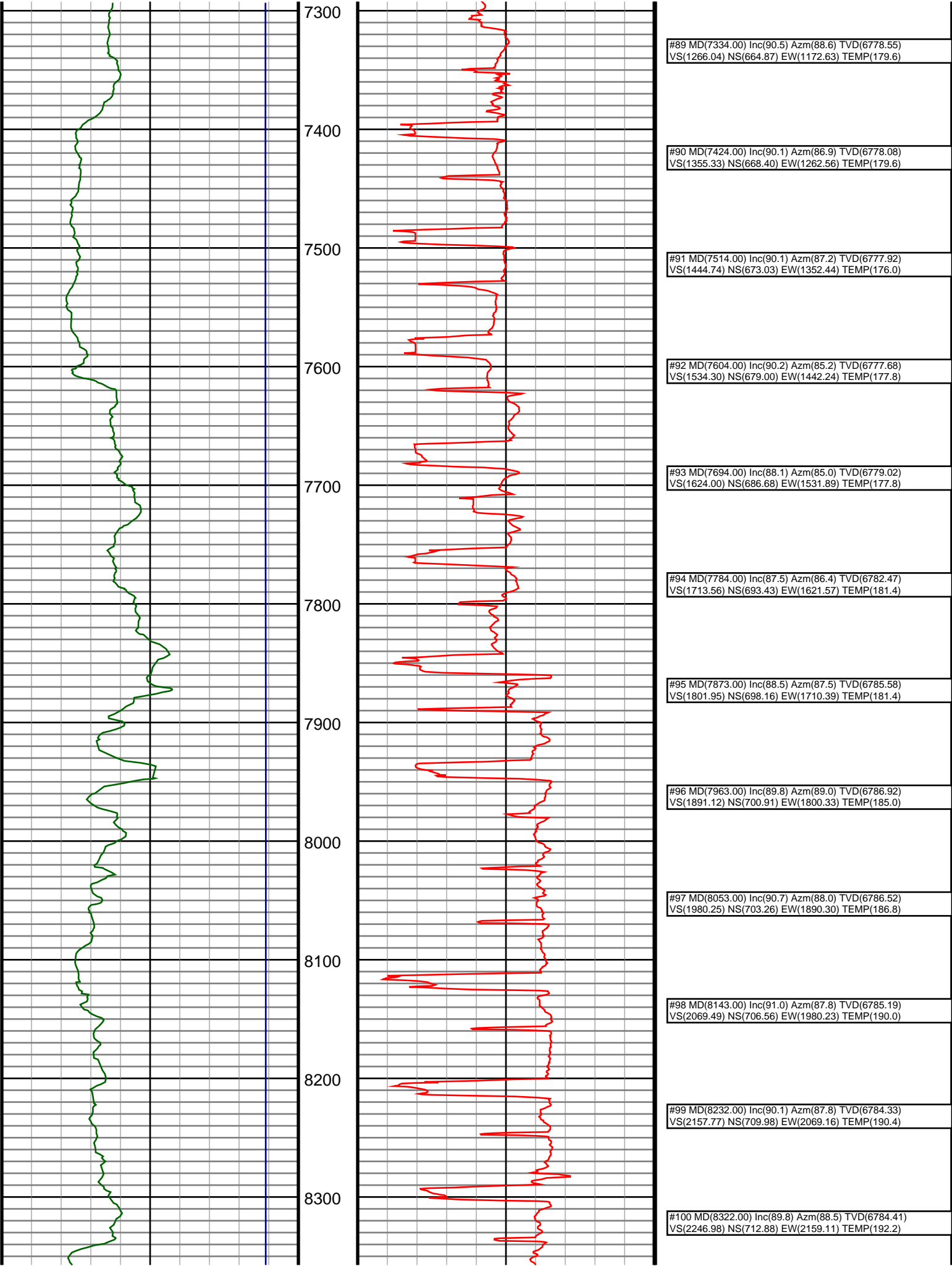


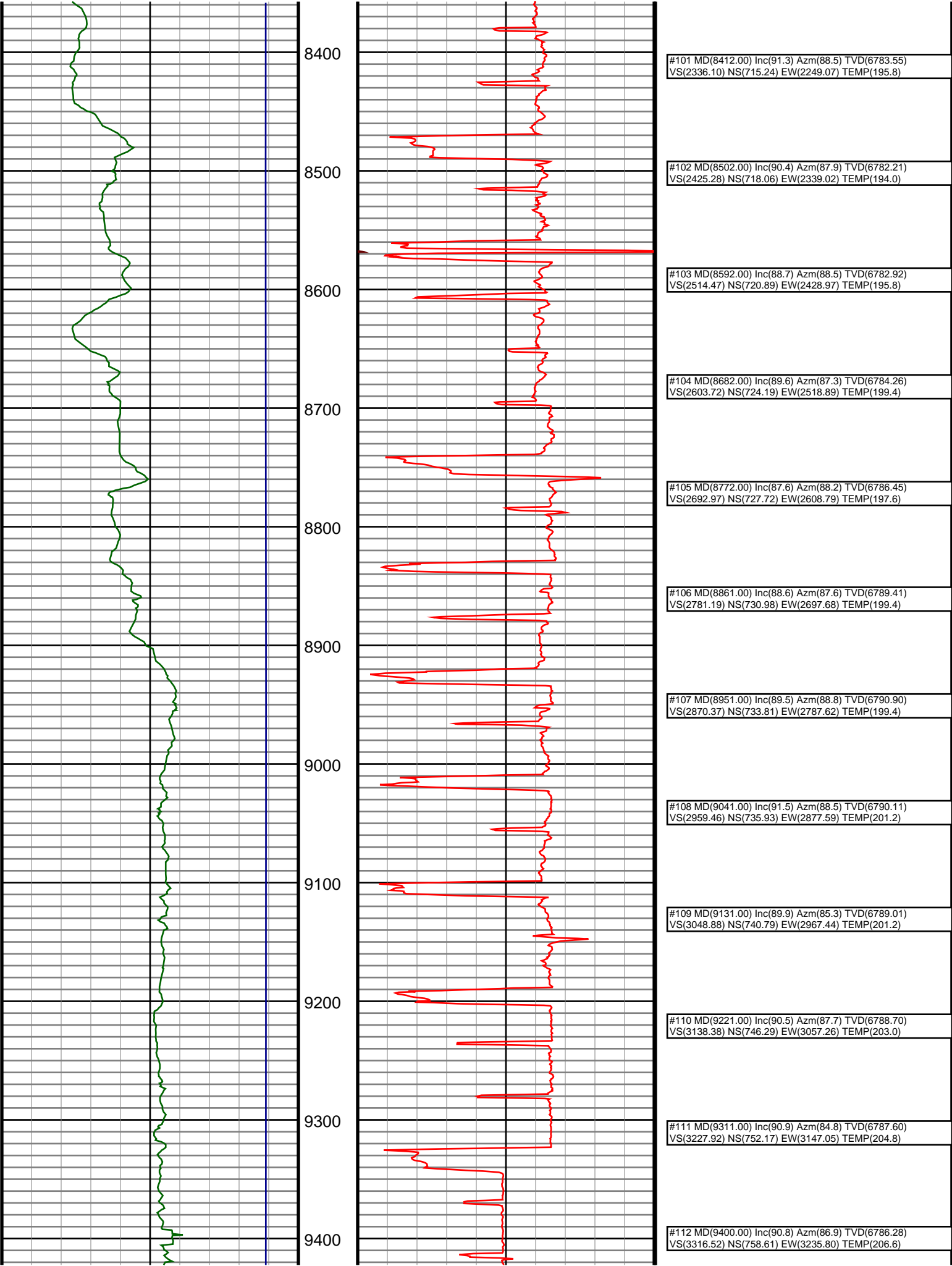


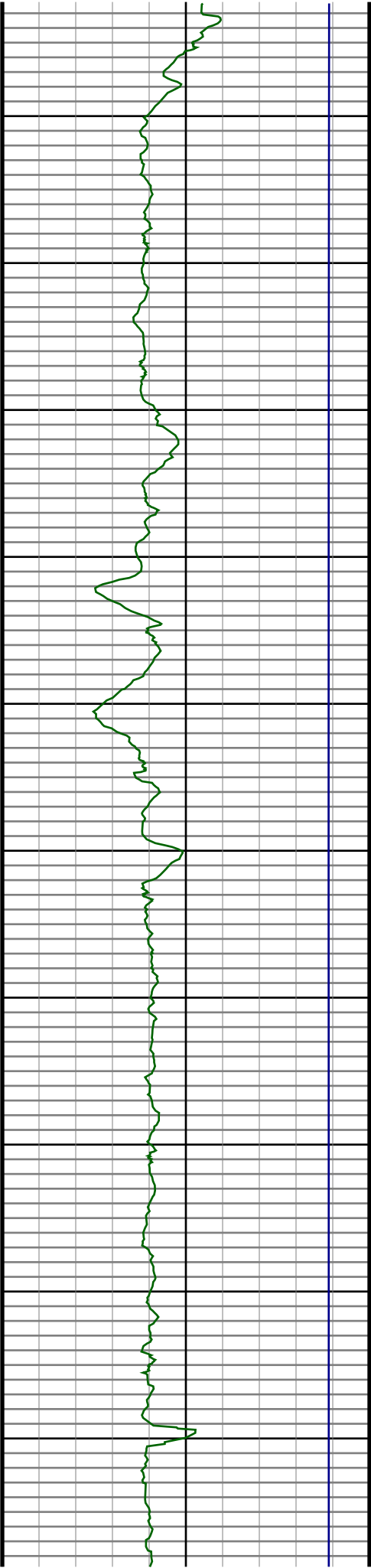




#66 MD(6237.00) Inc(9.8) Azm(85.5) TVD(6163.02) VS(496.73) NS(644.26) EW(396.13) TEMP(141.8)
#67 MD(6282.00) Inc(11.6) Azm(88.1) TVD(6207.24) VS(505.03) NS(644.71) EW(404.47) TEMP(143.6)
#68 MD(6327.00) Inc(14.5) Azm(88.9) TVD(6251.07) VS(515.09) NS(644.97) EW(414.62) TEMP(145.4)
#69 MD(6372.00) Inc(17.9) Azm(88.0) TVD(6294.28) VS(527.53) NS(645.32) EW(427.17) TEMP(147.2)
#70 MD(6417.00) Inc(20.6) Azm(86.3) TVD(6336.76) VS(542.26) NS(646.07) EW(441.99) TEMP(147.2)
#71 MD(6462.00) Inc(23.0) Azm(85.1) TVD(6378.54) VS(558.90) NS(647.34) EW(458.65) TEMP(147.2)
#72 MD(6507.00) Inc(27.0) Azm(85.3) TVD(6419.31) VS(577.85) NS(648.93) EW(477.59) TEMP(147.2)
#73 MD(6552.00) Inc(30.7) Azm(89.0) TVD(6458.72) VS(599.40) NS(649.96) EW(499.27) TEMP(206.6)
#74 MD(6597.00) Inc(35.7) Azm(89.7) TVD(6496.37) VS(623.74) NS(650.23) EW(523.90) TEMP(180.6)
#75 MD(6642.00) Inc(41.2) Azm(89.0) TVD(6531.60) VS(651.39) NS(650.56) EW(551.87) TEMP(154.4)
#76 MD(6687.00) Inc(46.5) Azm(88.9) TVD(6564.04) VS(682.21) NS(651.13) EW(583.03) TEMP(180.6)
#77 MD(6732.00) Inc(49.1) Azm(89.0) TVD(6594.26) VS(715.19) NS(651.74) EW(616.36) TEMP(156.2)
#78 MD(6777.00) Inc(51.9) Azm(88.4) TVD(6622.88) VS(749.56) NS(652.53) EW(651.07) TEMP(156.2)
#79 MD(6822.00) Inc(55.1) Azm(88.9) TVD(6649.65) VS(785.36) NS(653.38) EW(687.23) TEMP(156.2)
#80 MD(6866.00) Inc(57.8) Azm(88.9) TVD(6673.96) VS(821.64) NS(654.09) EW(723.88) TEMP(156.2)
#81 MD(6911.00) Inc(62.1) Azm(88.2) TVD(6696.49) VS(860.20) NS(655.08) EW(762.81) TEMP(158.0)
#82 MD(6956.00) Inc(66.4) Azm(88.5) TVD(6716.03) VS(900.34) NS(656.24) EW(803.32) TEMP(158.0)
#83 MD(7001.00) Inc(70.9) Azm(88.6) TVD(6732.41) VS(941.84) NS(657.30) EW(845.21) TEMP(158.6)
#84 MD(7046.00) Inc(73.1) Azm(88.4) TVD(6746.32) VS(984.22) NS(658.42) EW(887.99) TEMP(159.8)
#85 MD(7091.00) Inc(76.0) Azm(89.0) TVD(6758.30) VS(1027.15) NS(659.41) EW(931.34) TEMP(158.0)
#86 MD(7136.00) Inc(79.6) Azm(89.4) TVD(6767.81) VS(1070.62) NS(660.02) EW(975.32) TEMP(158.0)
#87 MD(7182.00) Inc(84.0) Azm(88.8) TVD(6774.37) VS(1115.63) NS(660.73) EW(1020.83) TEMP(158.0)
#88 MD(7244.00) Inc(89.0) Azm(88.2) TVD(6778.16) VS(1176.90) NS(662.35) EW(1082.67) TEMP(179.6)







9500

9600

9700

9800

9900

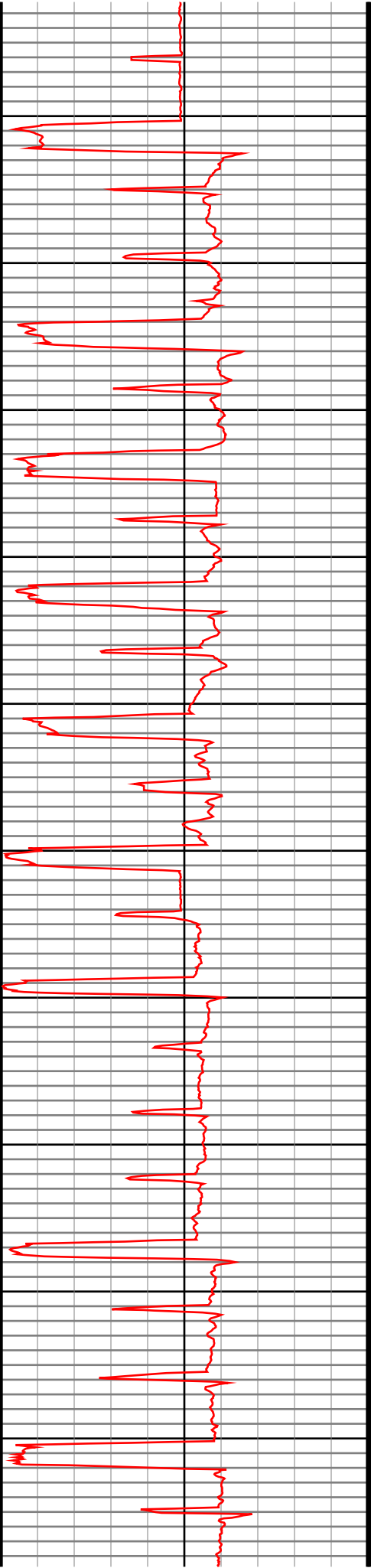
10000

10100

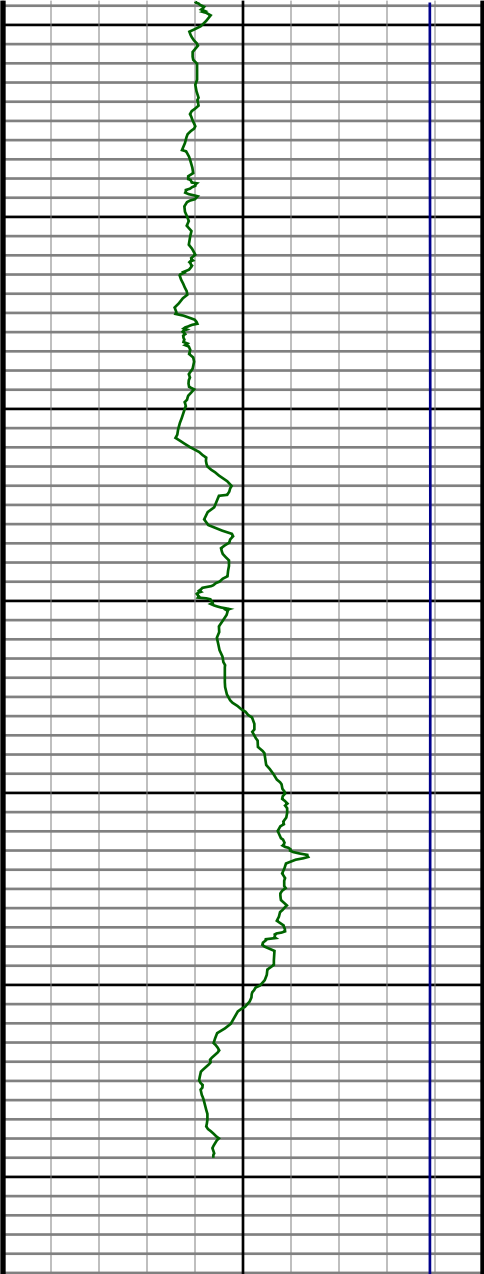
10200

10300

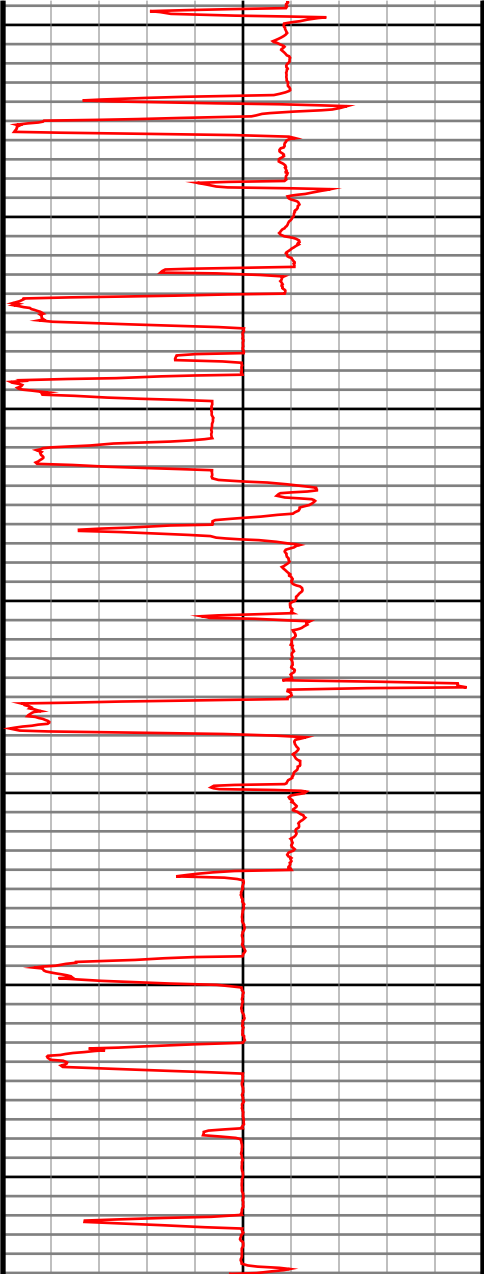
10400



#113 MD(9490.00) Inc(92.2) Azm(85.8) TVD(6783.92) VS(3406.02) NS(764.34) EW(3325.59) TEMP(204.8)
#114 MD(9580.00) Inc(90.8) Azm(86.3) TVD(6781.57) VS(3495.57) NS(770.54) EW(3415.34) TEMP(208.4)
#115 MD(9670.00) Inc(91.6) Azm(87.4) TVD(6779.68) VS(3585.00) NS(775.48) EW(3505.18) TEMP(206.6)
#116 MD(9760.00) Inc(90.5) Azm(88.9) TVD(6778.03) VS(3674.19) NS(778.39) EW(3595.12) TEMP(208.4)
#117 MD(9850.00) Inc(90.3) Azm(88.6) TVD(6777.40) VS(3763.26) NS(780.35) EW(3685.09) TEMP(210.2)
#118 MD(9940.00) Inc(90.6) Azm(88.7) TVD(6776.70) VS(3852.36) NS(782.47) EW(3775.06) TEMP(208.4)
#119 MD(10030.00) Inc(89.5) Azm(89.3) TVD(6776.62) VS(3941.37) NS(784.04) EW(3865.05) TEMP(206.6)
#120 MD(10119.00) Inc(89.0) Azm(88.6) TVD(6777.78) VS(4029.41) NS(785.67) EW(3954.02) TEMP(208.4)
#121 MD(10209.00) Inc(89.8) Azm(88.8) TVD(6778.73) VS(4118.49) NS(787.71) EW(4044.00) TEMP(210.2)
#122 MD(10299.00) Inc(89.7) Azm(87.2) TVD(6779.12) VS(4207.72) NS(790.85) EW(4133.94) TEMP(210.2)
#123 MD(10389.00) Inc(90.0) Azm(87.5) TVD(6779.35) VS(4297.08) NS(795.01) EW(4223.84) TEMP(212.0)
#124 MD(10479.00) Inc(89.4) Azm(84.6) TVD(6779.83) VS(4386.65) NS(801.21) EW(4313.62) TEMP(213.8)



10500
10600
10700
10800
10900
11000
11100



#125 MD(10569.00) Inc(88.2) Azm(84.0) TVD(6781.71)
VS(4476.44) NS(810.15) EW(4403.15) TEMP(212.0)

#126 MD(10659.00) Inc(87.9) Azm(84.8) TVD(6784.77)
VS(4566.18) NS(818.93) EW(4492.67) TEMP(212.0)

#127 MD(10748.00) Inc(89.8) Azm(87.7) TVD(6786.56)
VS(4654.70) NS(824.74) EW(4581.44) TEMP(213.8)

#128 MD(10838.00) Inc(90.8) Azm(87.2) TVD(6786.09)
VS(4744.05) NS(828.75) EW(4671.35) TEMP(213.8)

#129 MD(10928.00) Inc(91.6) Azm(88.6) TVD(6784.20)
VS(4833.28) NS(832.05) EW(4761.27) TEMP(217.4)

#130 MD(11018.00) Inc(91.1) Azm(88.7) TVD(6782.08)
VS(4922.35) NS(834.17) EW(4851.22) TEMP(217.4)

#131 MD(11093.00) Inc(90.2) Azm(86.8) TVD(6781.23)
VS(4996.75) NS(837.11) EW(4926.15) TEMP(217.4)

