

Resolute E25-63HN

noble energy **TVD**
1" : 100'

Company: Noble Energy Inc
Well Name: Resolute E25-63HN

API: 05-123-38158

Rig Id: Precision 828

State: Colorado

County/Parish: Weld

Country: USA

Survey Company: Ensign Directional

Job number: 207-P828-32

Company Man 1 Gary Stapleton

Directional Driller 1 Tyler Batchelder

Directional Driller 2 Matt Mason

MWD 1 Nick Jones

MWD 2 Damien Hunter

Log measurements: Gamma

Depth measured from: KB

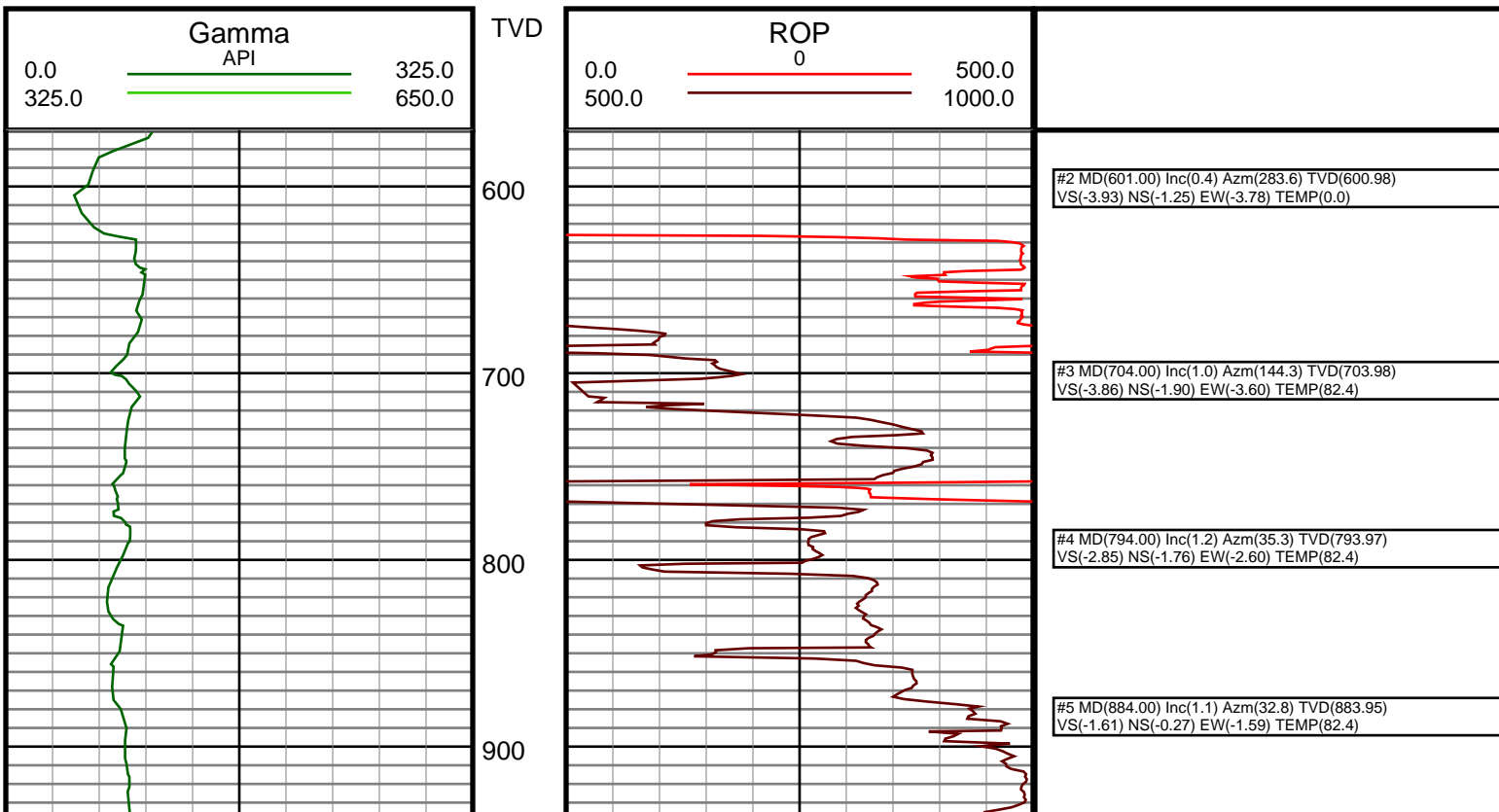
Maximum temperature:

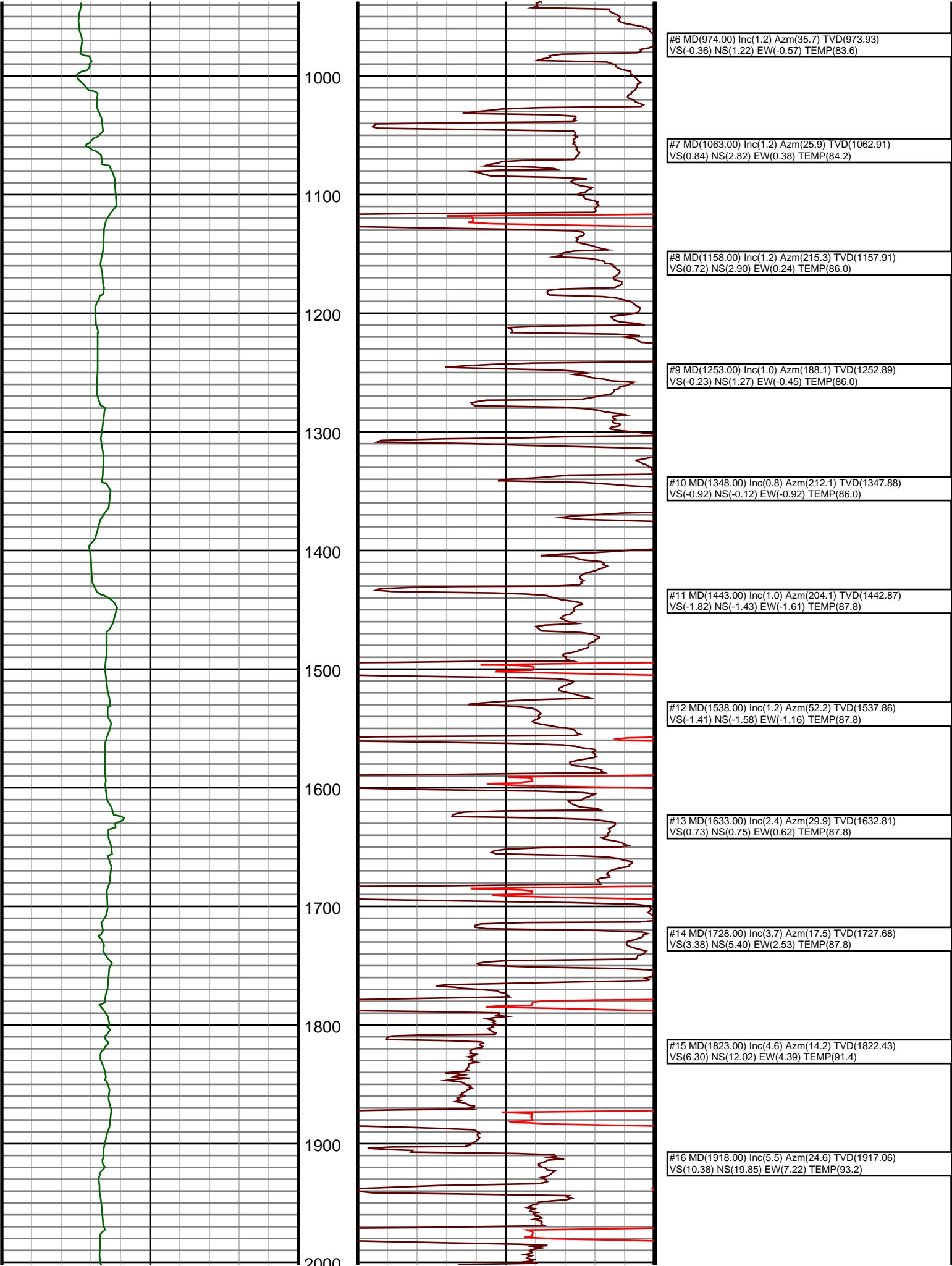
Depth **Date**
Start: 630 ft 5/30/2014
End: 11151 ft 6/5/2014

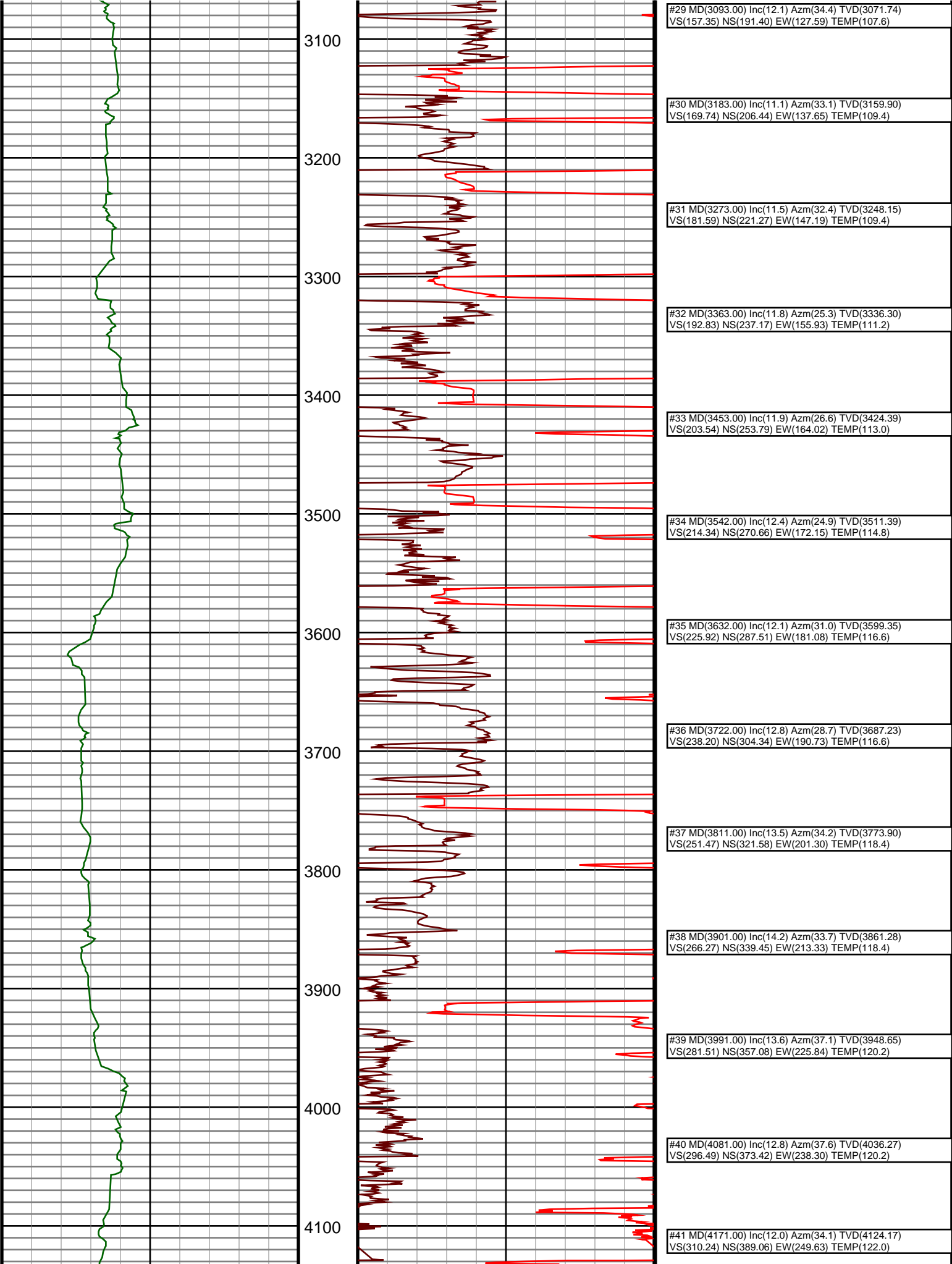
Casing	Depth	Size	Mud Type:	Elevations
Surface:	616	9.625	Water Based	KB: 4692
Intermediate:	7224	7	Density:	GL: 4676
			Viscosity:	DF: 4692
			Rm:	
			Rmf:	
			Rmc:	

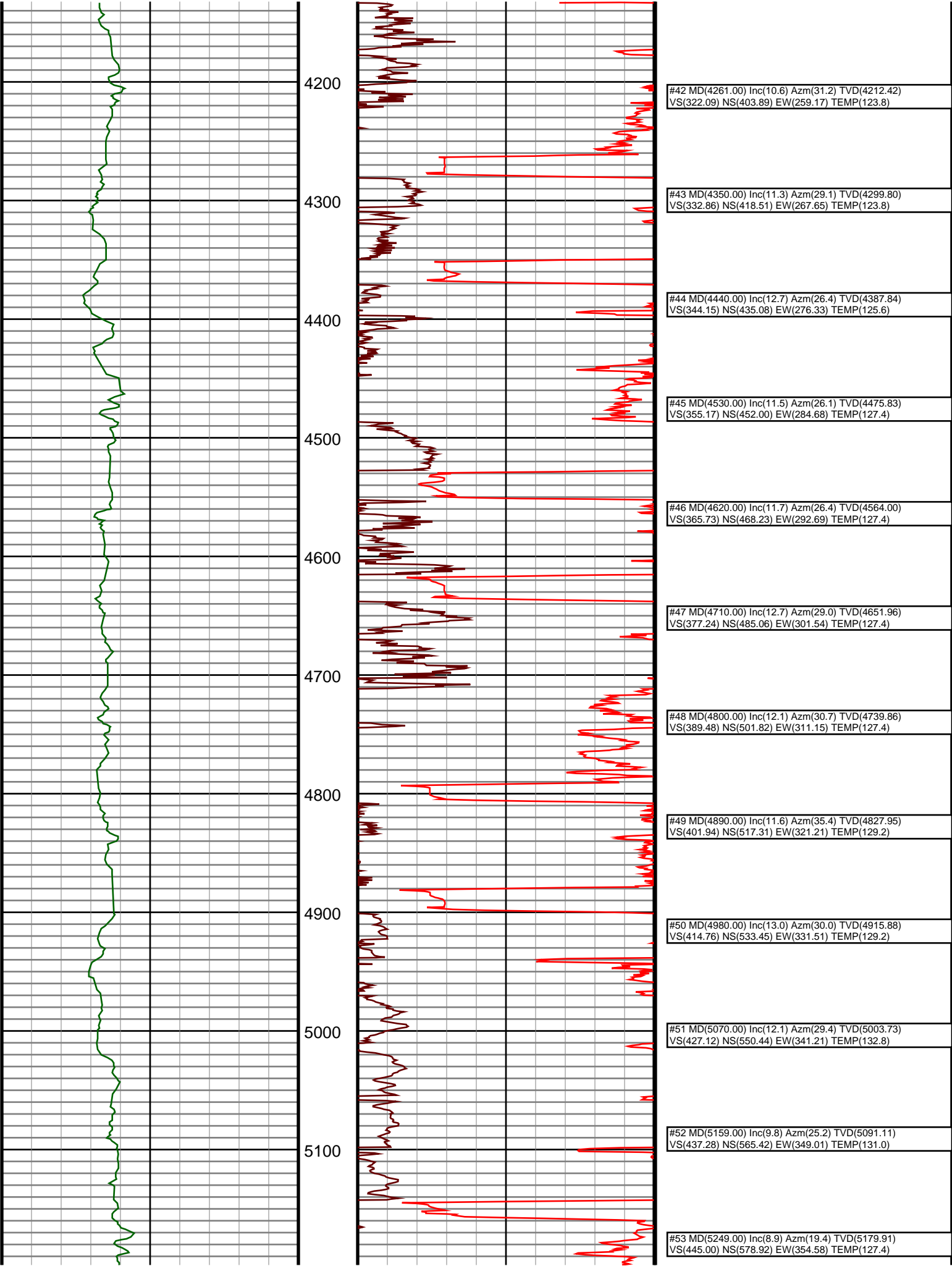
Run	Bit Size	Offsets	Gamma	Survey	Start	End	Start	End	Dates
1	8 3/4	56.17	51.17	626	7234	11151	5/30/2014	6/1/2014	
2	6 1/8	61.13	56.13	7234			6/3/2014	6/5/2014	
3									
4									
5									
6									
7									
8									
9									
10									

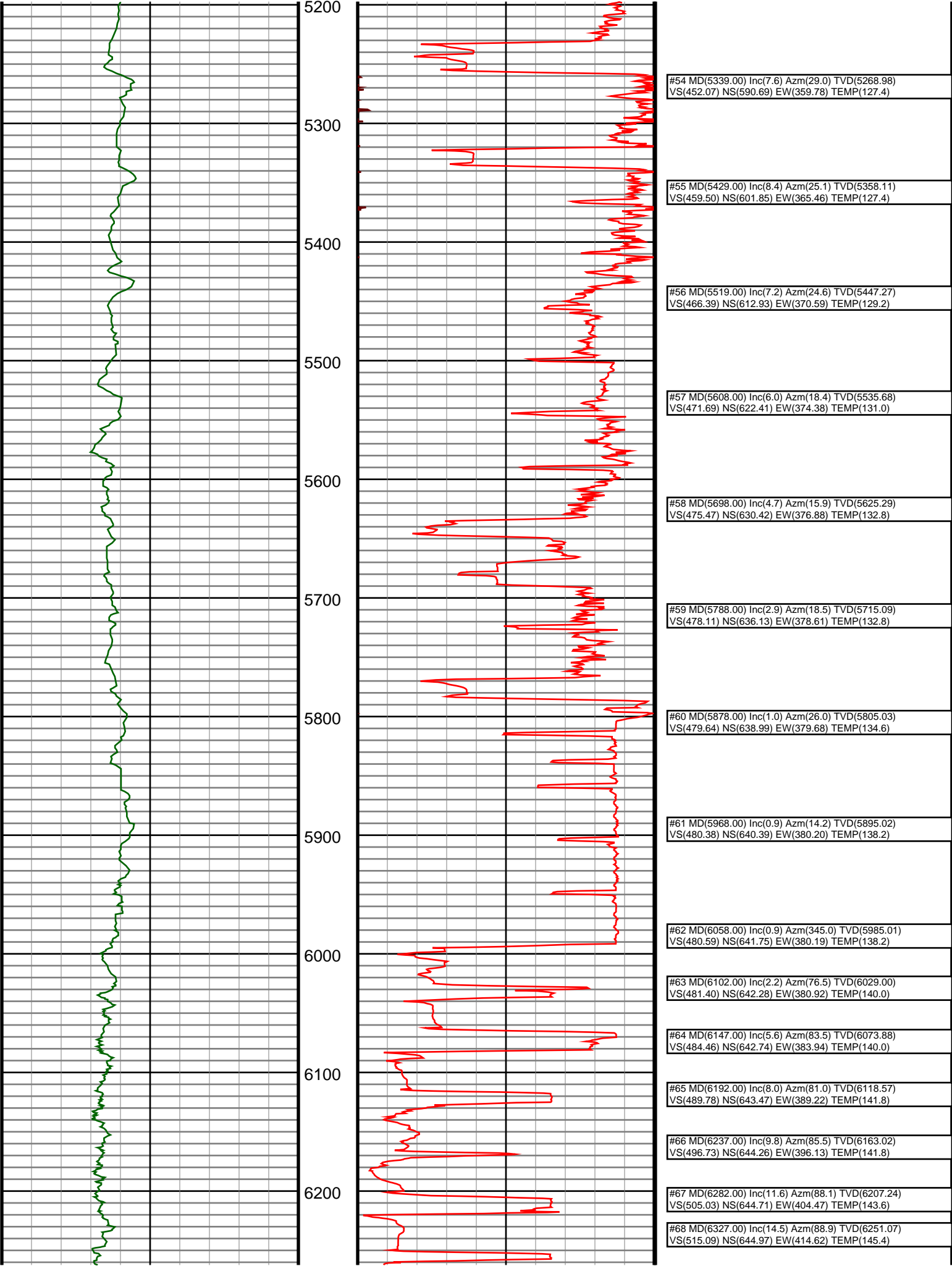
Ensign Directional uses its best efforts to provide its customers with accurate information and interpretations in conjunction with services performed but will not be held liable or responsible for the accuracy of such information or interpretation.

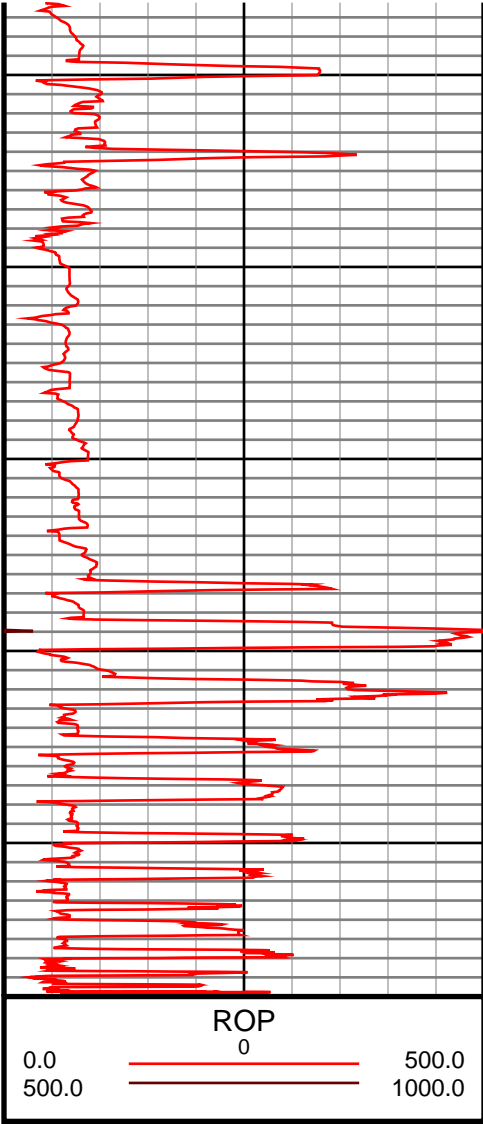
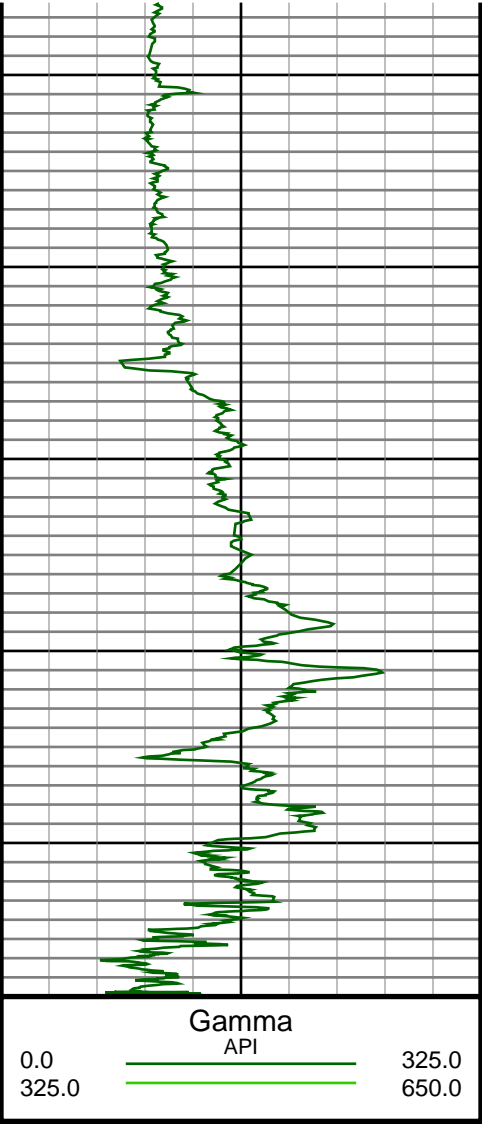












#69 MD(6372.00) Inc(17.9) Azm(88.0) TVD(6294.28) VS(527.53) NS(645.32) EW(427.17) TEMP(147.2)
#70 MD(6417.00) Inc(20.6) Azm(86.3) TVD(6336.76) VS(542.26) NS(646.07) EW(441.99) TEMP(147.2)
#71 MD(6462.00) Inc(23.0) Azm(85.1) TVD(6378.54) VS(558.90) NS(647.34) EW(458.65) TEMP(147.2)
#72 MD(6507.00) Inc(27.0) Azm(85.3) TVD(6419.31) VS(577.85) NS(648.93) EW(477.59) TEMP(147.2)
#73 MD(6552.00) Inc(30.7) Azm(89.0) TVD(6458.72) VS(599.40) NS(649.96) EW(499.27) TEMP(206.6)
#74 MD(6597.00) Inc(35.7) Azm(89.7) TVD(6496.37) VS(623.74) NS(650.23) EW(523.90) TEMP(180.6)
#75 MD(6642.00) Inc(41.2) Azm(89.0) TVD(6531.60) VS(651.39) NS(650.56) EW(551.87) TEMP(154.4)
#76 MD(6687.00) Inc(46.5) Azm(88.9) TVD(6564.04) VS(682.21) NS(651.13) EW(583.03) TEMP(180.6)
#77 MD(6732.00) Inc(49.1) Azm(89.0) TVD(6594.26) VS(715.19) NS(651.74) EW(616.36) TEMP(156.2)
#78 MD(6777.00) Inc(51.9) Azm(88.4) TVD(6622.88) VS(749.56) NS(652.53) EW(651.07) TEMP(156.2)
#79 MD(6822.00) Inc(55.1) Azm(88.9) TVD(6649.65) VS(785.36) NS(653.38) EW(687.23) TEMP(156.2)
#80 MD(6866.00) Inc(57.8) Azm(88.9) TVD(6673.96) VS(821.64) NS(654.09) EW(723.88) TEMP(156.2)
#81 MD(6911.00) Inc(62.1) Azm(88.2) TVD(6696.49) VS(860.20) NS(655.08) EW(762.81) TEMP(158.0)
#83 MD(7001.00) Inc(70.9) Azm(88.6) TVD(6732.41) VS(941.84) NS(657.30) EW(845.21) TEMP(158.6)
#86 MD(7136.00) Inc(79.6) Azm(89.4) TVD(6767.81) VS(1070.62) NS(660.02) EW(975.32) TEMP(158.0)
#93 MD(7694.00) Inc(88.1) Azm(85.0) TVD(6779.02) VS(1624.00) NS(666.66) EW(1591.86) TEMP(177.9)