

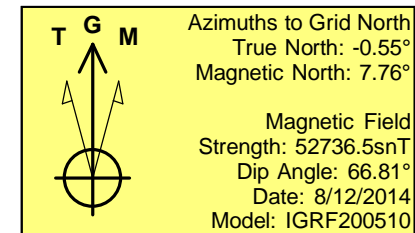
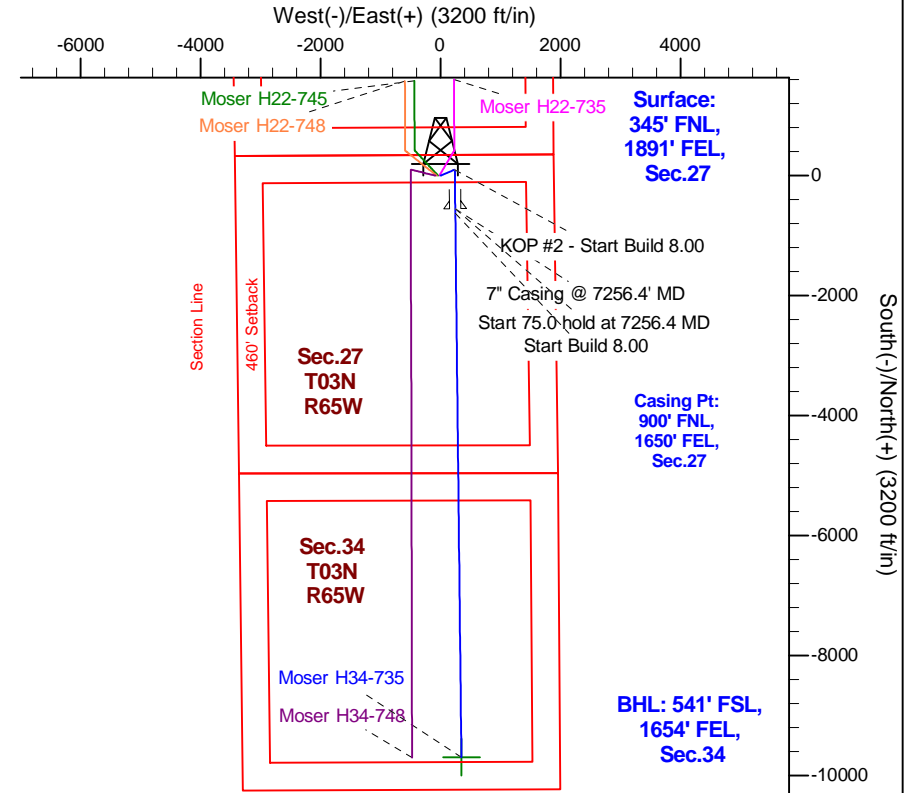
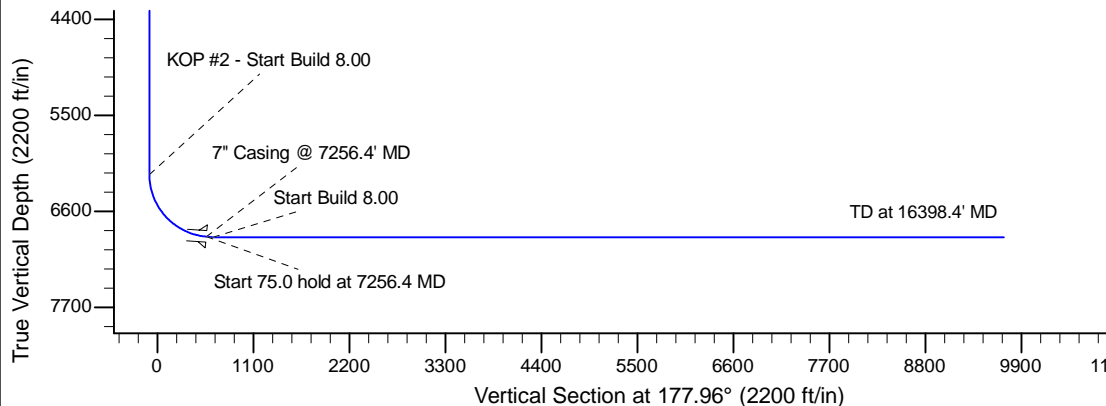
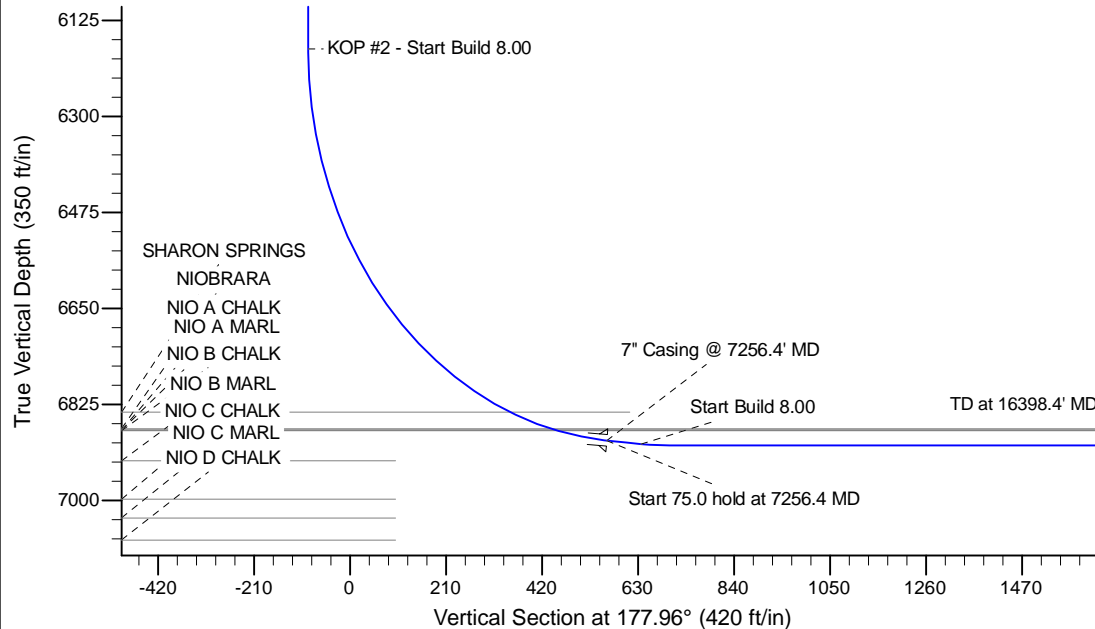
Project: Wattenberg Field  
 Site: H (Sec.22-T3N-R65W) Weld County, CO  
 Well: Moser H34-735  
 Wellbore: Original Drilling  
 Design: APD - Rev 1

# Northern Region Drilling - Working

Geodetic System: US State Plane 1983  
 Datum: North American Datum 1983  
 Ellipsoid: GRS 1980  
 Zone: Colorado Northern Zone  
 System Datum: Mean Sea Level

## SECTION DETAILS

Sec	MD	Inc	Azi	TVD	+N/-S	+E/-W	Dleg	TFace	VSec	Target
1	0.0	0.00	0.00	0.0	0.0	0.0	0.00	0.00	0.0	
2	1200.0	0.00	0.00	1200.0	0.0	0.0	0.00	0.00	0.0	
3	1602.2	8.04	66.95	1600.9	11.0	25.9	2.00	66.95	-10.1	
4	3024.4	8.04	66.95	3009.1	89.0	209.1	0.00	0.00	-81.5	
5	3426.6	0.00	0.00	3410.0	100.0	235.0	2.00	180.00	-91.6	
6	6193.9	0.00	0.00	6177.3	100.0	235.0	0.00	0.00	-91.6	
7	7256.4	85.00	179.36	6890.7	-553.7	242.3	8.00	179.36	562.0	
8	7331.4	85.00	179.36	6897.3	-628.4	243.2	0.00	0.00	636.7	
9	7393.9	90.00	179.36	6900.0	-690.9	243.9	8.00	0.00	699.1	
10	16398.4	90.00	179.36	6900.0	-9694.8	344.8	0.00	0.00	9700.9	Moser H34-735 BHL 541'FSL, 1654'FEL



## WELL DETAILS: Moser H34-735

Ground Level: 4811.0					
0.0	0.0	North	East	Latitude	Longitude
1317831.94	3238254.26	40.202700	-104.647010		

Plan: APD - Rev 1 (Moser H34-735/Original Drilling)

Created By: Shailey Jewell Date: 11:19, October 06 2014

OK to submit with 2A as per Noble Drilling  
 10/6/2014 12:40