

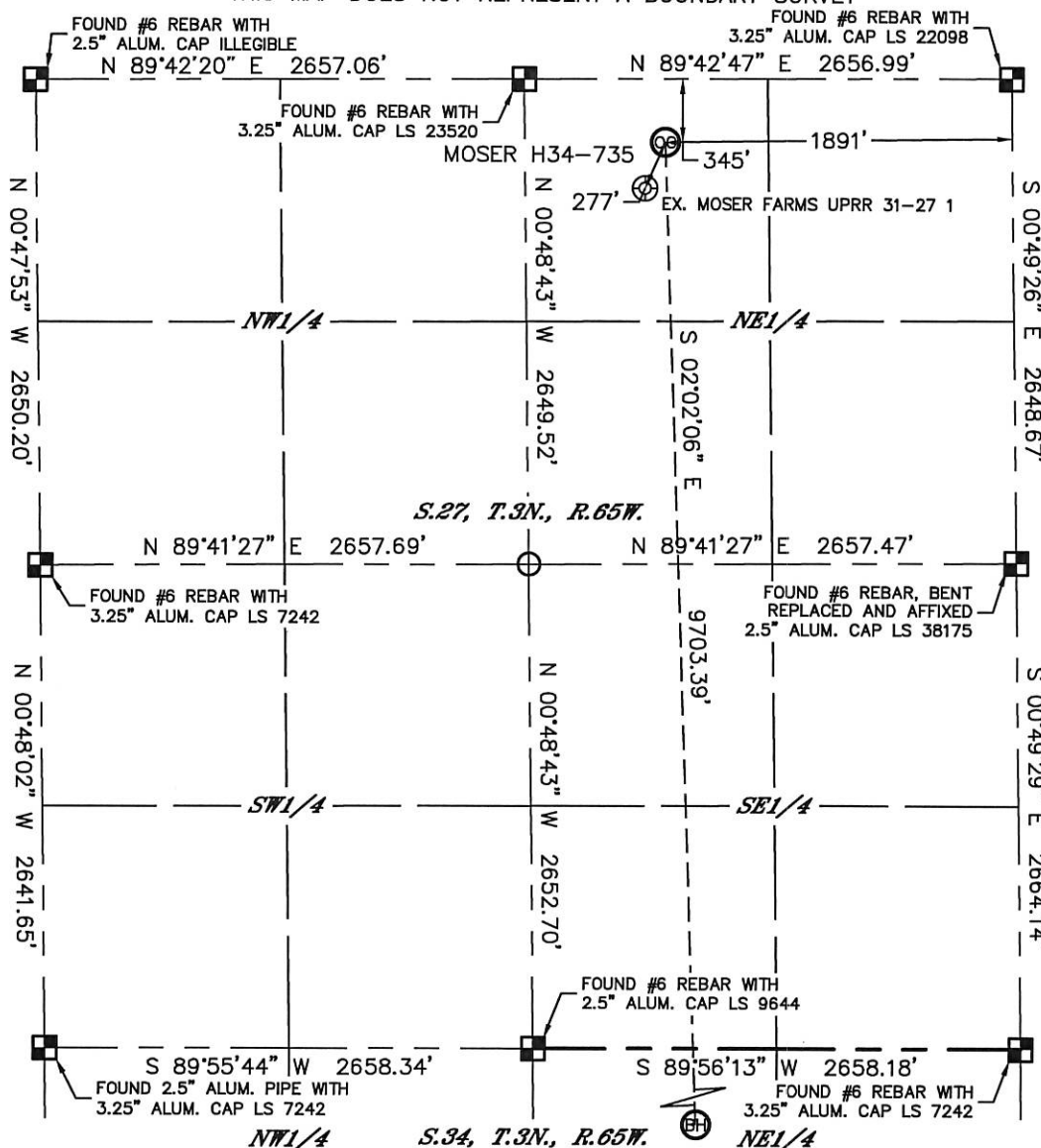


Lat40°, Inc. 1635 Foxtrail Drive, Suite 325 Loveland, CO 970-776-3321

# WELL LOCATION CERTIFICATE

SECTION: 27  
TOWNSHIP: 3N  
RANGE: 65W

THIS MAP DOES NOT REPRESENT A BOUNDARY SURVEY



In accordance with a request from Mike Roding with Noble Energy Inc., Lat40°, Inc. has determined the surface location of the MOSER H34-735 to be 345' from the NORTH line and 1891' from the EAST line as measured at right angles from the section lines of Section 27, Township 3 North, Range 65 West and the bottom hole to be 541' from the SOUTH line and 1654' from the EAST line as measured at right angles from the section lines of Section 34, Township 3 North, Range 65 West of the Sixth Principal Meridian, County of Weld, State of Colorado.

I hereby state that this Well Location Certificate was prepared by me, or under my direct supervision, that the fieldwork was completed on 3/13/2014, for and on behalf of Noble Energy Inc. That this is not a Land Survey Plat or an Improvement Survey Plat, and that it is not to be relied upon for establishment of fence, building, or other future improvement lines.

## NOTE:

- 1) Bearings shown are Grid Bearings of the Colorado State Plane Coordinate System, North Zone, North American Datum 1983/2007. The lineal dimensions as contained herein are based upon the "U.S. Survey Foot."
  - 2) Ground elevations are based on an observed GPS elevation (NAVD 1988 DATUM).
  - 3) IMPROVEMENTS: See LOCATION DRAWING for all visible improvements within 500' of disturbed area.
  - 4) SURFACE USE: OLD CROP LAND
  - 5) INSTRUMENT OPERATOR: BRIAN ROTTINGHAUS
  - 6) NEAREST EXISTING WELL: MOSER FARMS UPRR 31-27 1, 277' SW
- NEAREST CULTURAL ITEMS:  
BUILDING: ±1320' NW  
BUILDING UNIT: ±1320' NW  
HIGH OCCUPANCY BUILDING UNIT: 5280'+  
DESIGNATED OUTSIDE ACTIVITY AREA: 5280'+  
PUBLIC ROAD: 332' N (CR 30)  
ABOVEGROUND UTILITY: 310' N  
RAILROAD: 5280'+  
PROPERTY LINE: 345' N

## SURFACE LOCATION

LAT: 40.20270°N  
LONG: 104.64701°W  
PDOP: 1.9  
ELEV: 4811'  
1/4, 1/4: NWNE

## BOTTOM HOLE

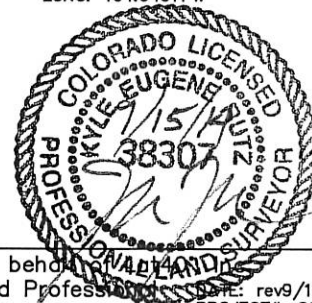
LAT: 40.17608°N  
LONG: 104.64611°W

## LEGEND

- = ALIQUOT MONUMENT AS DESCRIBED
- = CALCULATED POSITION

## SHEET 1 OF 2

Kyle E. Rutz—On behalf of Noble Energy Inc.  
Colorado Licensed Professional Land Surveyor No. 38307  
DATE: rev9/12/2014  
PROJECT#: 2013178



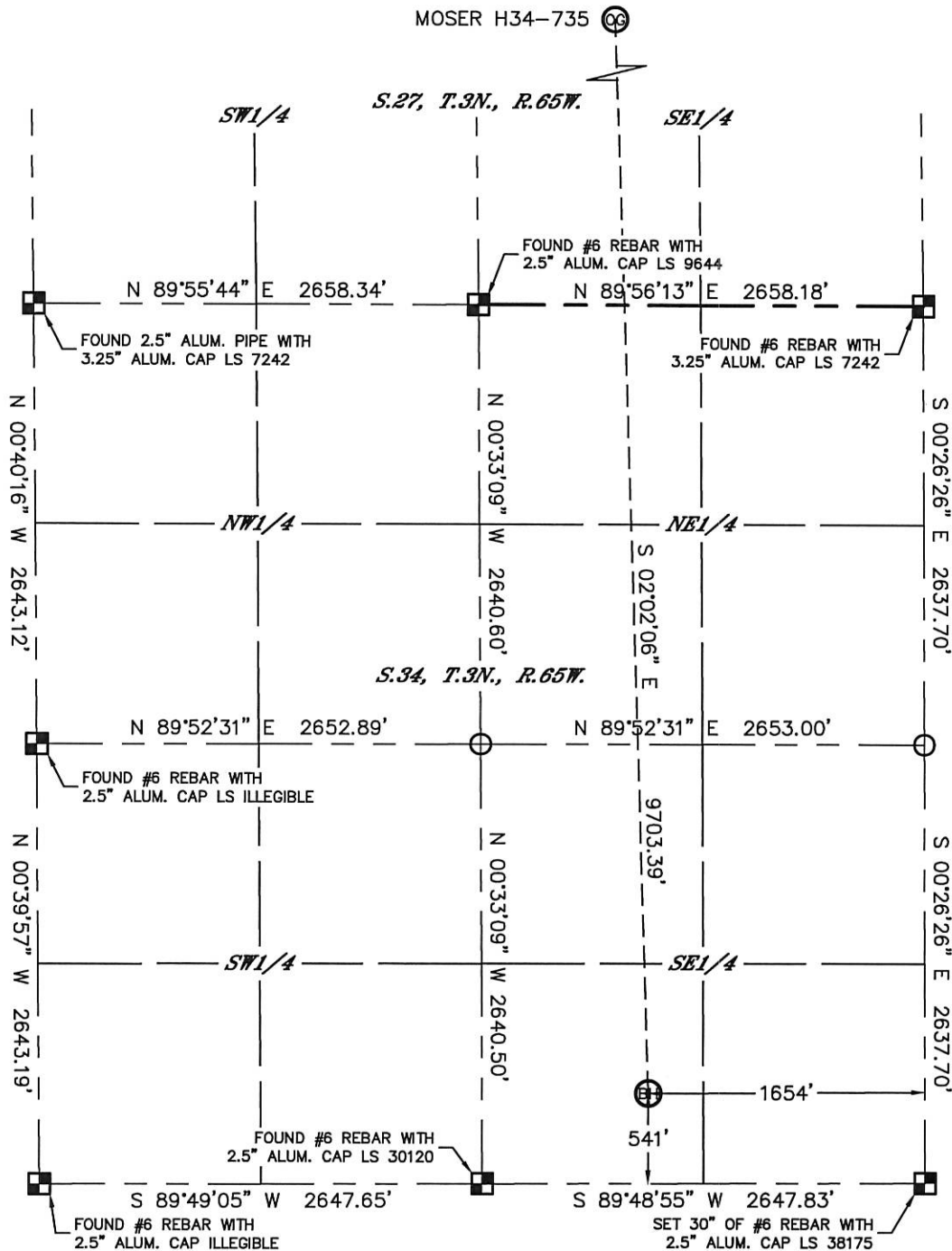


Lat40°, Inc. 1635 Foxtrail Drive, Suite 325 Loveland, CO 970-776-3321

# WELL LOCATION CERTIFICATE

THIS MAP DOES NOT REPRESENT A BOUNDARY SURVEY

SECTION: 27  
TOWNSHIP: 3N  
RANGE: 65W



## LEGEND

- = ALIQUOT MONUMENT AS DESCRIBED
- = CALCULATED POSITION



SHEET 2 OF 2

Kyle E. Rutz—On behalf of  
Colorado Licensed Professional Surveyor No. 38307  
Land Surveyor No. 38307  
DATE: rev9/12/2014  
PROJECT#: 2013178

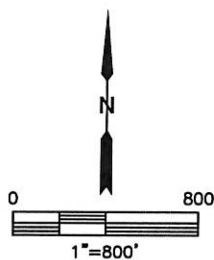
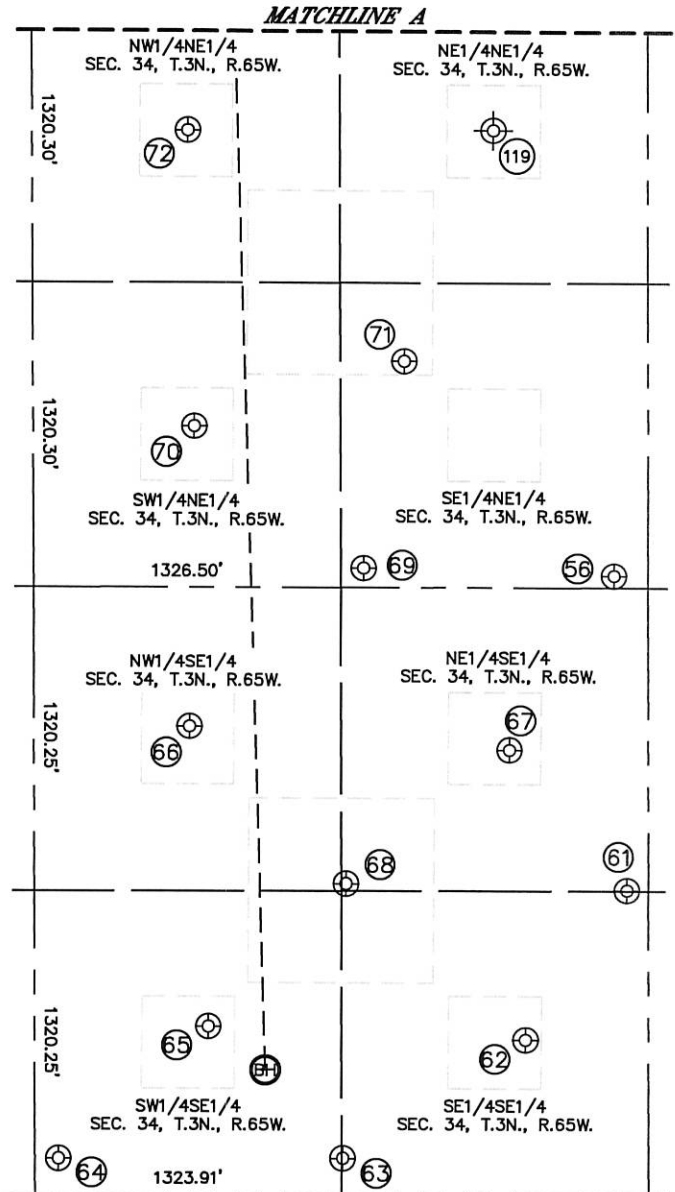
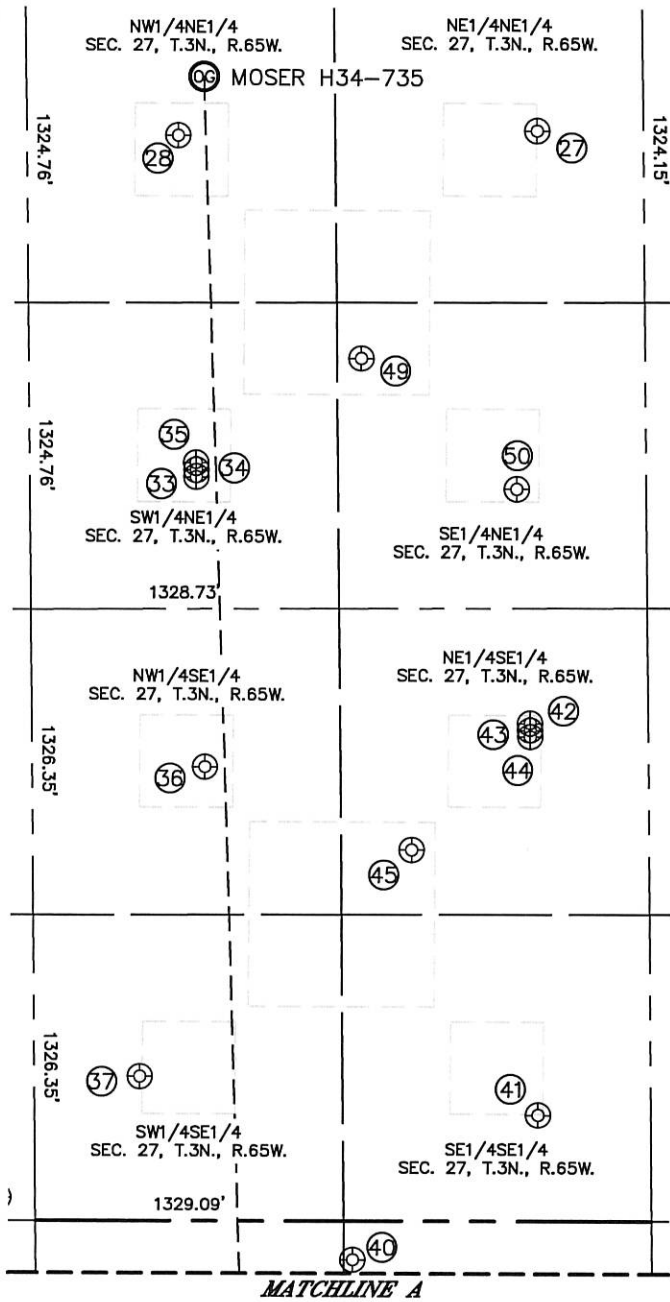


Lat40°, Inc. 1635 Foxtrail Drive, Suite 325 Loveland, CO 970-776-3321

# SITE SKETCH

MOSER H34-735

SECTION: 27  
TOWNSHIP: 3N  
RANGE: 65W



SHEET 1 OF 2

DATE: rev9/12/2014  
PROJECT#: 2013178



Lat40°, Inc. 1635 Foxtrail Drive, Suite 325 Loveland, CO 970-776-3321

## SITE SKETCH

MOSER H34-735

SECTION: 27  
TOWNSHIP: 3N  
RANGE: 65W

WELL NO.	WELL NAME	SHL FOOTAGE				SHL LAT°	SHL LONG°	PDOP	ELEV (FT.)	1/4/1/4
27	HSR-MOSER 1-27	581	FNL	458	FEL	40.20204	-104.64188	3.0	4812	NENE
28	MOSER FARMS UPRR 31-27 #1	599	FNL	2005	FEL	40.20201	-104.64741	3.0	4813	NWNE
33	MOSER 23-27	2079	FNL	1940	FEL	40.19795	-104.64716	2.4	4818	SWNE
34	MOSER 7-27	2049	FNL	1940	FEL	40.19803	-104.64716	2.4	4819	SWNE
35	MOSER 21-27	2020	FNL	1940	FEL	40.19811	-104.64716	2.4	4819	SWNE
36	HSR-MOSER 10-27	1968	FSL	1913	FEL	40.19449	-104.64704	2.5	4820	NWSE
37	HSR-MOSER 15-27	627	FSL	2204	FEL	40.19082	-104.64806	2.5	4824	SWSE
40	MOSER H 34-27	169	FNL	1292	FEL	40.18861	-104.64478	2.2	4826	NENE
41	HSR-MOSER 16-27	461	FSL	488	FEL	40.19032	-104.64191	3.0	4822	SESE
42	MOSER 24-27	2161	FSL	510	FEL	40.19499	-104.64202	3.1	4820	NESE
43	MOSER 9-27X (P/A)	2130	FSL	510	FEL	40.19490	-104.64202	3.1	4821	NESE
44	MOSER 39-27	2101	FSL	509	FEL	40.19482	-104.64202	3.1	4821	NESE
45	HSR-THORSON 9-27	1610	FSL	1024	FEL	40.19349	-104.64385	1.9	4818	NESE
49	UPRR 53 PAN AM "0" #1	1567	FNL	1224	FEL	40.19934	-104.64460	1.7	4815	SENE
50	MOSER FARMS UPRR 42-27 #3	2133	FNL	559	FEL	40.19778	-104.64221	2.1	4816	SENE
56	MOSER H35-32	2587	FNL	148	FEL	40.18195	-104.64071	1.4	4833	SENE
61	MOSER H 35-33	1321	FSL	94	FEL	40.17819	-104.64052	1.8	4839	NESE
62	MOSER H 34-16	672	FSL	531	FEL	40.17642	-104.64209	1.9	4838	SESE
63	MOSER X 3-27	156	FSL	1320	FEL	40.17502	-104.64492	1.9	4842	SESE
64	MOSER X 3-28	155	FSL	2547	FEL	40.17504	-104.64931	2.0	4840	SWSE
65	MOSER H 34-15	731	FSL	1899	FEL	40.17661	-104.64699	2.1	4837	SWSE
66	MOSER H 34-10	2032	FSL	1981	FEL	40.18018	-104.64727	2.1	4835	NWSE
67	MOSER H 34-09	1929	FSL	599	FEL	40.17987	-104.64233	2.1	4835	NESE
68	MOSER H 34-23	1351	FSL	1306	FEL	40.17830	-104.64486	2.1	4836	NESE
69	MOSER H 34-22	2558	FNL	1229	FEL	40.18206	-104.64458	2.1	4832	SENE
70	MOSER H 34-07	1943	FNL	1958	FEL	40.18376	-104.64718	2.0	4832	SWNE
71	MOSER H 34-08	1660	FNL	1051	FEL	40.18452	-104.64393	1.9	4828	SENE
72	MOSER H 34-02 (P/A)	657	FNL	1984	FEL	40.18729	-104.64726	2.2	4827	NWNE
119	MOSER H #34-1 (P/A)	655	FNL	665	FEL	40.18715	-104.64253	N/A	4823	NENE

NOTE: THE ABANDONED WELL DATA SHOWN IN RED ABOVE WAS OBTAINED FROM COGCC SCOUT CARDS.

**SHEET 2 OF 2**

DATE: rev9/12/2014  
PROJECT#: 2013178