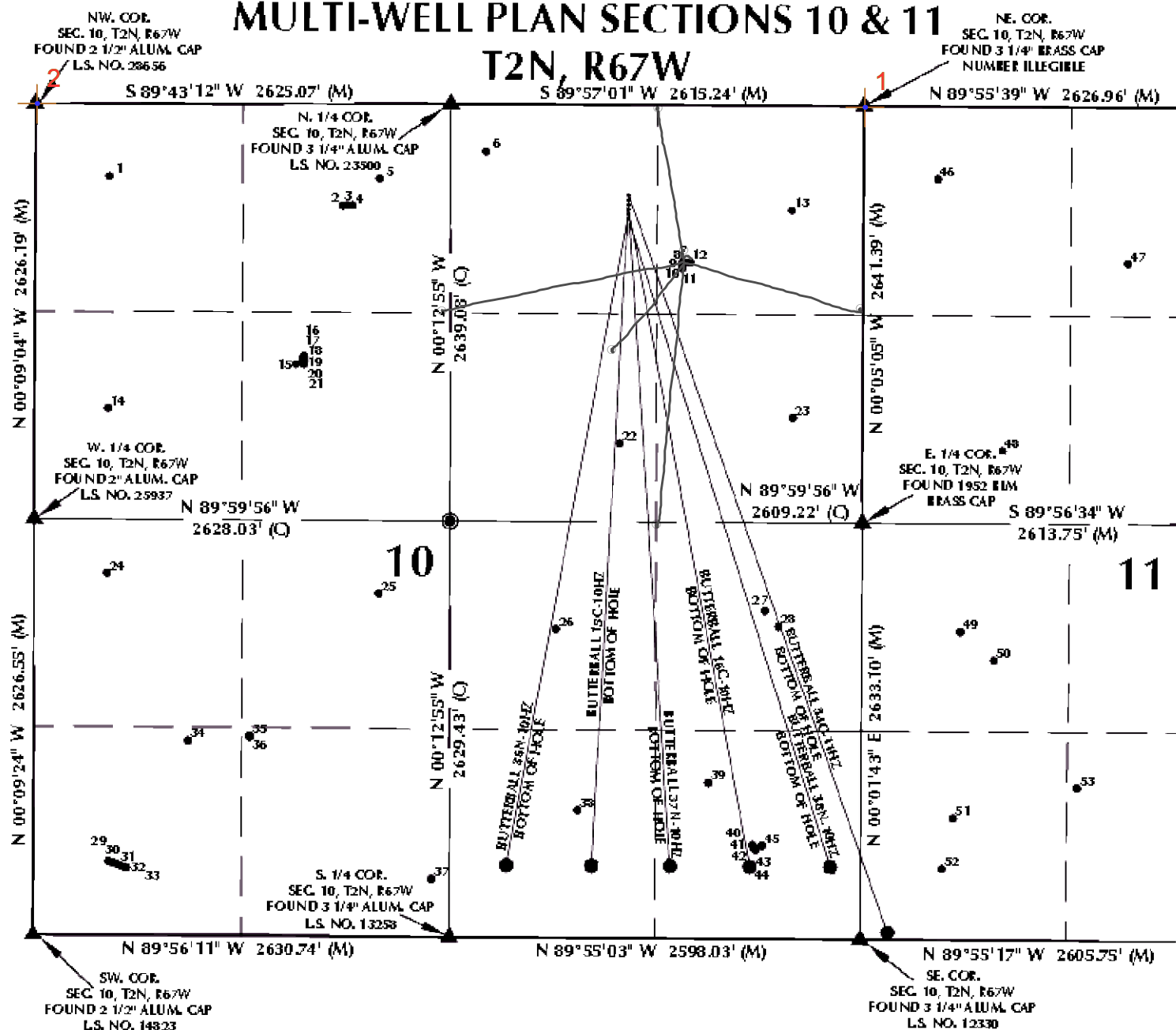


# MULTI-WELL PLAN SECTIONS 10 & 11

T2N, R67W



## WELL NOTES:

BUTTERBALL 34C-11HZ  
SURFACE: 567' FNL, 1489' FEL  
BOTTOM HOLE: 50' FSL, 175' FWL

BUTTERBALL 15C-10HZ  
SURFACE: 597' FNL, 1489' FEL  
BOTTOM HOLE: 460' FSL, 1700' FEL

BUTTERBALL 37N-10HZ  
SURFACE: 627' FNL, 1489' FEL  
BOTTOM HOLE: 460' FSL, 1205' FEL

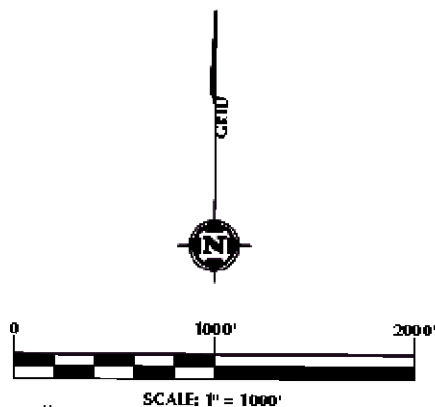
BUTTERBALL 16C-10HZ  
SURFACE: 657' FNL, 1489' FEL  
BOTTOM HOLE: 460' FSL, 700' FEL

BUTTERBALL 36N-10HZ  
SURFACE: 687' FNL, 1489' FEL  
BOTTOM HOLE: 460' FSL, 2240' FEL

BUTTERBALL 38N-10HZ  
SURFACE: 717' FNL, 1489' FEL  
BOTTOM HOLE: 460' FSL, 190' FEL

## NOTES:

- INDICATES FOUND SECTION CORNER
- INDICATES CALCULATED CORNER
- INDICATES EXISTING WELL LOCATION
- BASIS OF BEARING DERIVED FROM COLORADO COORDINATE SYSTEM 1983 NORTH ZONE UNLESS OTHERWISE NOTED.
- ALL MEASURED DISTANCES ARE GRID.
- COMBINED SCALE FACTOR: .99972297
- WELL FOOTAGES ARE MEASURED AT RIGHT ANGLES TO THE SECTION LINES



## WELL PAD - BUTTERBALL 37N-10HZ

MULTI-WELL PLAN  
BUTTERBALL 34C-11HZ,  
BUTTERBALL 15C-10HZ, BUTTERBALL 37N-10HZ,  
BUTTERBALL 16C-10HZ, BUTTERBALL 36N-10HZ &  
BUTTERBALL 38N-10HZ  
LOCATED IN SECTIONS 10 & 11  
T2N, R67W, 6TH P.M.  
WELD COUNTY, COLORADO

Kerr-McGee Oil &  
Gas Onshore L.P.

1099 18th Street  
Denver, Colorado 80202



## CONSULTING, LLC

SHERIDAN OFFICE  
2155 North Main Street  
Sheridan, WY 82801  
Phone: 307.674.0000

LOVELAND OFFICE  
103 S Front Trail Drive, Suite 204  
Loveland, Colorado 80538  
Phone: 970.775.4321

DRAFTED BY:	LWO	CHECKED BY:	EJR	SHEET NO:
DATE DRAFTED:	8/15/14	DATE SURVEYED:	8/11/14	1
REVISED:		FILE NAME:	13-90	1 OF 2