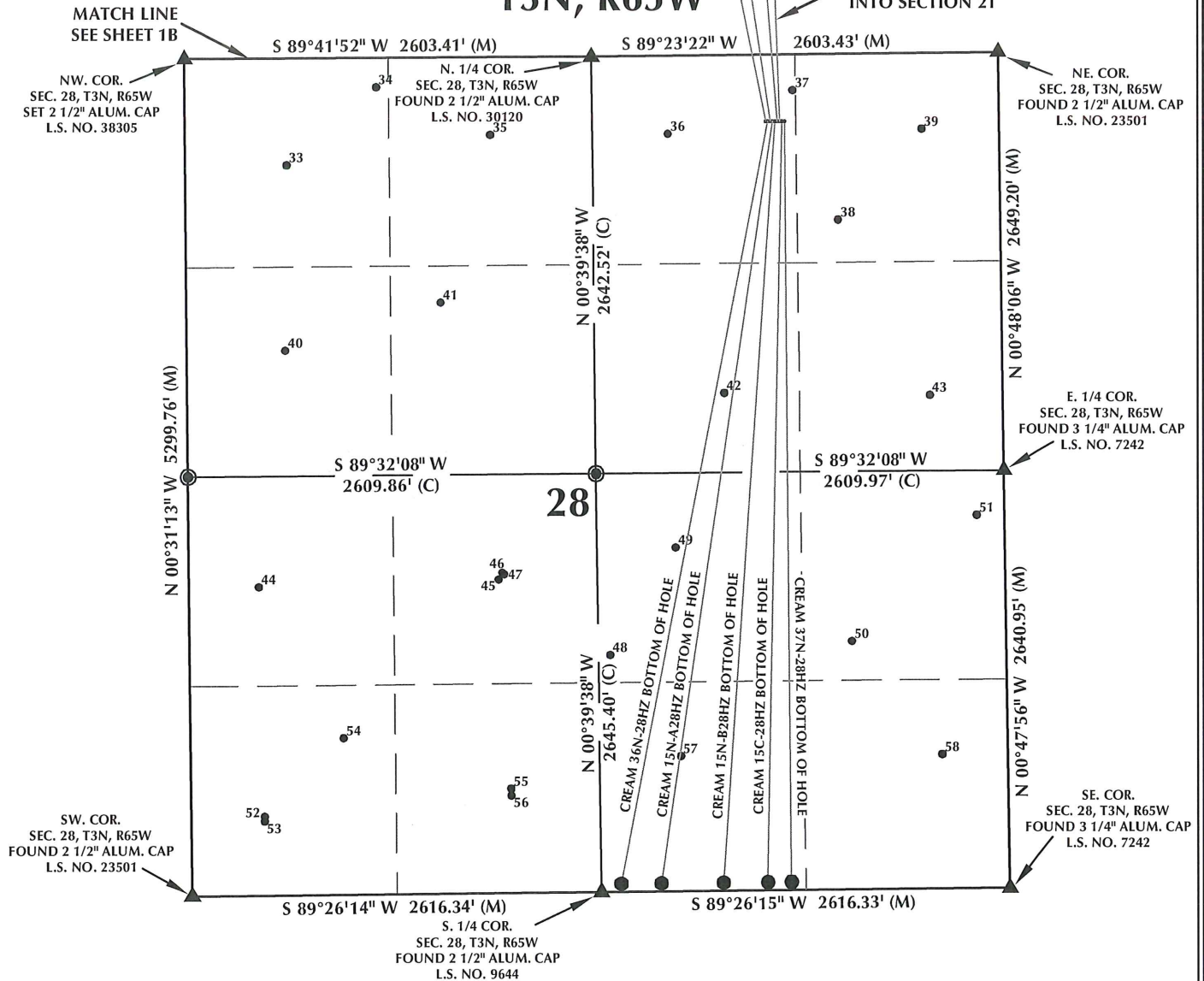


MULTI-WELL PLAN SECTION 28

T3N, R65W

WELL BORES CONTINUE INTO SECTION 21



WELL NOTES:

CREAM STATE 28C-21HZ
SURFACE: 421' FNL, 1495' FEL
BOTTOM HOLE: 50' FNL, 2565' FEL

CREAM 36N-28HZ
SURFACE: 421' FNL, 1480' FEL
BOTTOM HOLE: 50' FSL, 2488' FEL

CREAM STATE 28N-21HZ
SURFACE: 422' FNL, 1465' FEL
BOTTOM HOLE: 50' FNL, 2246' FEL

CREAM 15N-A28HZ
SURFACE: 422' FNL, 1450' FEL
BOTTOM HOLE: 50' FSL, 2231' FEL

CREAM 15N-B28HZ
SURFACE: 422' FNL, 1435' FEL
BOTTOM HOLE: 50' FSL, 1834' FEL

CREAM STATE 22N-21HZ
SURFACE: 422' FNL, 1420' FEL
BOTTOM HOLE: 50' FNL, 1806' FEL

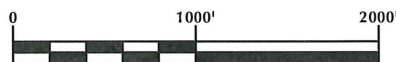
CREAM STATE 2C-21HZ
SURFACE: 422' FNL, 1405' FEL
BOTTOM HOLE: 50' FNL, 1528' FEL

CREAM 15C-28HZ
SURFACE: 422' FNL, 1390' FEL
BOTTOM HOLE: 50' FSL, 1549' FEL

CREAM 37N-28HZ
SURFACE: 423' FNL, 1375' FEL
BOTTOM HOLE: 50' FSL, 1399' FEL

NOTES:

- ▲ INDICATES FOUND SECTION CORNER
- INDICATES CALCULATED CORNER
- INDICATES EXISTING WELL LOCATION
- BASIS OF BEARING DERIVED FROM COLORADO COORDINATE SYSTEM 1983 NORTH ZONE UNLESS OTHERWISE NOTED.
- ALL MEASURED DISTANCES ARE GRID.
- COMBINED SCALE FACTOR: .99972948
- WELL FOOTAGES ARE MEASURED AT RIGHT ANGLES TO THE SECTION LINES.



SCALE: 1" = 1000'

WELL PAD - CREAM 15N-B28HZ

MULTI-WELL PLAN
CREAM STATE 28C-21HZ, CREAM 36N-28HZ,
CREAM STATE 28N-21HZ, CREAM 15N-A28HZ,
CREAM 15N-B28HZ, CREAM STATE 2N-21HZ,
CREAM STATE 2C-21HZ, CREAM 15C-28HZ &
CREAM 37N-28HZ
LOCATED IN SECTIONS 21 & 28
T3N, R65W, 6TH P.M.
WELD COUNTY, COLORADO

**Kerr-McGee Oil &
Gas Onshore L.P.**

1099 18th Street
Denver, Colorado 80202



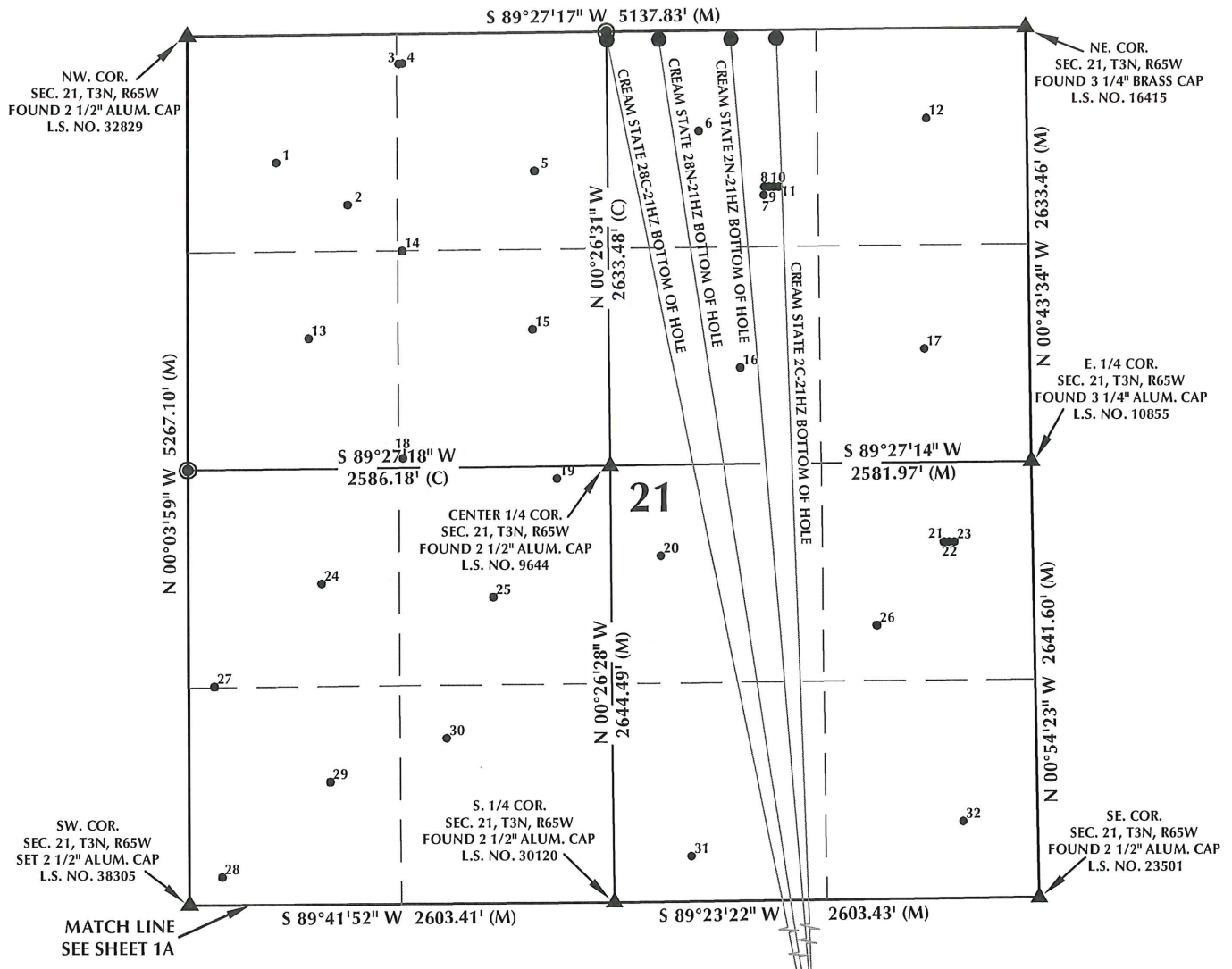
CONSULTING, LLC

SHERIDAN OFFICE
2155 North Main Street
Sheridan, Wyoming 82801
Phone 307-674-0609

LOVELAND OFFICE
1635 Foxtrail Drive, Suite 204
Loveland, Colorado 80538
Phone 970-776-4331

DRAFTED BY:	LMO	CHECKED BY:	BJR	SHEET NO:
DATE DRAFTED:	8/5/14	DATE SURVEYED:	7/23/14	1A
REVISED:	10/31/14	FILE NAME:	14-46	1A OF 2

MULTI-WELL PLAN SECTION 21 T3N, R65W



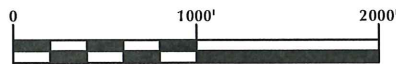
WELL NOTES:

CREAM STATE 28C-21HZ
SURFACE: 421' FNL, 1495' FEL
BOTTOM HOLE: 50' FNL, 2565' FEL
CREAM 36N-28HZ
SURFACE: 421' FNL, 1480' FEL
BOTTOM HOLE: 50' FSL, 2488' FEL
CREAM STATE 28N-21HZ
SURFACE: 422' FNL, 1465' FEL
BOTTOM HOLE: 50' FNL, 2246' FEL
CREAM 15N-A28HZ
SURFACE: 422' FNL, 1450' FEL
BOTTOM HOLE: 50' FSL, 2231' FEL
CREAM 15N-B28HZ
SURFACE: 422' FNL, 1435' FEL
BOTTOM HOLE: 50' FSL, 1834' FEL

CREAM STATE 2N-21HZ
SURFACE: 422' FNL, 1420' FEL
BOTTOM HOLE: 50' FNL, 1806' FEL
CREAM STATE 2C-21HZ
SURFACE: 422' FNL, 1405' FEL
BOTTOM HOLE: 50' FNL, 1528' FEL
CREAM 15C-28HZ
SURFACE: 422' FNL, 1390' FEL
BOTTOM HOLE: 50' FSL, 1549' FEL
CREAM 37N-28HZ
SURFACE: 423' FNL, 1375' FEL
BOTTOM HOLE: 50' FSL, 1399' FEL

NOTES:

- ▲ INDICATES FOUND SECTION CORNER
- INDICATES CALCULATED CORNER
- INDICATES EXISTING WELL LOCATION
- BASIS OF BEARING DERIVED FROM COLORADO COORDINATE SYSTEM 1983 NORTH ZONE UNLESS OTHERWISE NOTED.
- ALL MEASURED DISTANCES ARE GRID.
- COMBINED SCALE FACTOR: .99972948
- WELL FOOTAGES ARE MEASURED AT RIGHT ANGLES TO THE SECTION LINES.



SCALE: 1" = 1000'

WELL PAD - CREAM 15N-B28HZ

MULTI-WELL PLAN
CREAM STATE 28C-21HZ, CREAM 36N-28HZ,
CREAM STATE 28N-21HZ, CREAM 15N-A28HZ,
CREAM 15N-B28HZ, CREAM STATE 2N-21HZ,
CREAM STATE 2C-21HZ, CREAM 15C-28HZ &
CREAM 37N-28HZ
LOCATED IN SECTIONS 21 & 28
T3N, R65W, 6TH P.M.
WELD COUNTY, COLORADO

**Kerr-McGee Oil &
Gas Onshore L.P.**
1099 18th Street
Denver, Colorado 80202



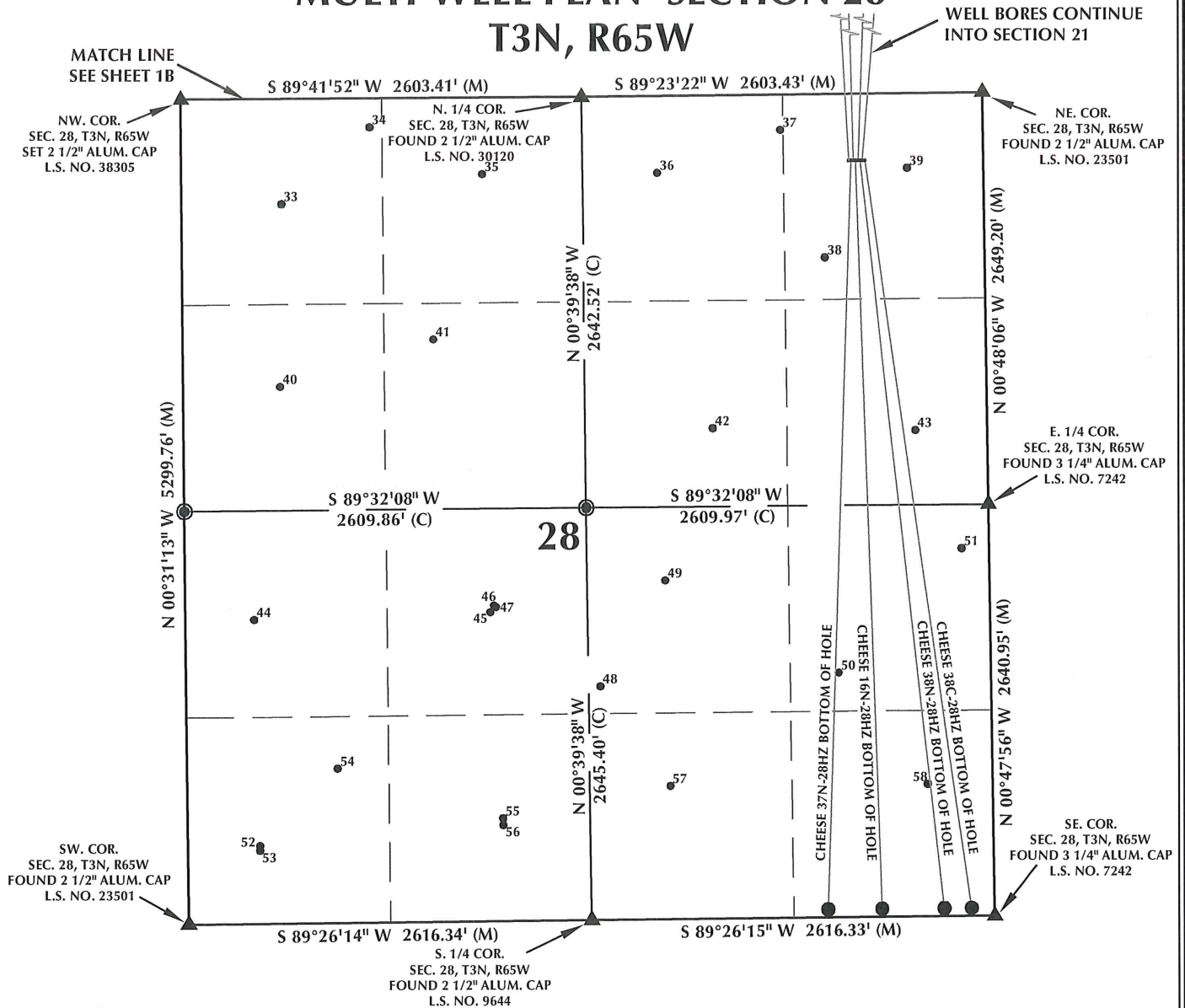
CONSULTING, LLC

SHERIDAN OFFICE
2155 North Main Street
Sheridan, Wyoming 82801
Phone 307-674-0609

LOVELAND OFFICE
1635 Foxtrail Drive, Suite 204
Loveland, Colorado 80538
Phone 970-776-4331

DRAFTED BY:	LMO	CHECKED BY:	BJR	SHEET NO:
DATE DRAFTED:	8/5/14	DATE SURVEYED:	7/23/14	1B
REVISED:	10/31/14	FILE NAME:	14-46	1B OF 2

MULTI-WELL PLAN SECTION 28 T3N, R65W



WELL NOTES:

CHEESE STATE 27N-21HZ
SURFACE: 428' FNL, 875' FEL
BOTTOM HOLE: 51' FNL, 1127' FEL

CHEESE 37N-28HZ
SURFACE: 428' FNL, 860' FEL
BOTTOM HOLE: 50' FSL, 1080' FEL

CHEESE STATE 1N-21HZ
SURFACE: 428' FNL, 845' FEL
BOTTOM HOLE: 50' FNL, 926' FEL

CHEESE 16N-28HZ
SURFACE: 428' FNL, 830' FEL
BOTTOM HOLE: 50' FSL, 730' FEL

CHEESE STATE 26N-21HZ
SURFACE: 429' FNL, 815' FEL
BOTTOM HOLE: 50' FNL, 526' FEL

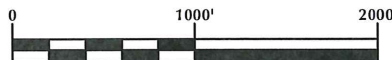
CHEESE 38N-28HZ
SURFACE: 429' FNL, 800' FEL
BOTTOM HOLE: 50' FSL, 325' FEL

CHEESE STATE 26C-21HZ
SURFACE: 429' FNL, 785' FEL
BOTTOM HOLE: 50' FNL, 246' FEL

CHEESE 38C-28HZ
SURFACE: 429' FNL, 770' FEL
BOTTOM HOLE: 50' FSL, 149' FEL

NOTES:

- ▲ INDICATES FOUND SECTION CORNER
- INDICATES CALCULATED CORNER
- INDICATES EXISTING WELL LOCATION
- BASIS OF BEARING DERIVED FROM COLORADO COORDINATE SYSTEM 1983 NORTH ZONE UNLESS OTHERWISE NOTED.
- ALL MEASURED DISTANCES ARE GRID.
COMBINED SCALE FACTOR: .99972948
- WELL FOOTAGES ARE MEASURED AT RIGHT ANGLES TO THE SECTION LINES.



SCALE: 1" = 1000'

WELL PAD - CHEESE 16N-28HZ

MULTI-WELL PLAN
CHEESE STATE 27N-21HZ, CHEESE 37N-28HZ,
CHEESE STATE 1N-21HZ, CHEESE 16N-28HZ,
CHEESE STATE 26N-21HZ, CHEESE 38N-28HZ,
CHEESE STATE 26C-21HZ & CHEESE 38C-28HZ
LOCATED IN SECTIONS 21 & 28
T3N, R65W, 6TH P.M.
WELD COUNTY, COLORADO

**Kerr-McGee Oil &
Gas Onshore L.P.**
1099 18th Street
Denver, Colorado 80202



CONSULTING, LLC

SHERIDAN OFFICE
2155 North Main Street
Sheridan, Wyoming 82801
Phone 307-674-0609

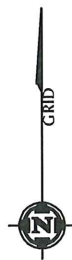
LOVELAND OFFICE
1635 Foxtrail Drive, Suite 204
Loveland, Colorado 80538
Phone 970-776-4331

DRAFTED BY: LMO	CHECKED BY: BJR	SHEET NO: 1A
DATE DRAFTED: 8/5/14	DATE SURVEYED: 7/23/14	1A OF 2
REVISED: 10/31/14	FILE NAME: 14-46	




\\FANADARKO\2014\46_MOSER_WELL-STAKING_3N65W\PLATS\CHEESE 16N-28HZ\MULTI-WELL PLAN.dwg, 10/27/2014 4:29:53 PM, Jake



CHEESE 38N-28HZ
SURFACE: 429' FNL, 800' FEL
BOTTOM HOLE: 50' FSL, 325' FEL
CHEESE STATE 26C-21HZ
SURFACE: 429' FNL, 785' FEL
BOTTOM HOLE: 50' FNL, 246' FEL
CHEESE 38C-28HZ
SURFACE: 429' FNL, 770' FEL
BOTTOM HOLE: 50' FSL, 149' FEL



NOTES:

1.  INDICATES FOUND SECTION CORNER
2.  INDICATES CALCULATED CORNER
3.  INDICATES EXISTING WELL LOCATION
4. BASIS OF BEARING DERIVED FROM COLORADO COORDINATE SYSTEM 1983 NORTH ZONE UNLESS OTHERWISE NOTED.
5. ALL MEASURED DISTANCES ARE GRID.
COMBINED SCALE FACTOR: .99972948
6. WELL FOOTAGES ARE MEASURED AT RIGHT ANGLES TO THE SECTION LINES.

DRAFTED BY: LMO	CHECKED BY: BJR	SHEET NO: 1B 1B OF 2
DATE DRAFTED: 8/5/14	DATE SURVEYED: 7/23/14	
REVISED: 10/31/14	FILE NAME: 14-46	

MULTI-WELL PLAN SECTION 21, T3N, R65W

NUMBER	WELL NAME	NAD 83	
		LATITUDE	LONGITUDE
1	UPRC 21-4J	40.216046°	-104.675824°
2	UPRR 22 PAN AM UT/U/ 2	40.215329°	-104.674261°
3	MOSER H 21-30	40.217675°	-104.673117°
4	MOSER H 21-29	40.217678°	-104.673030°
5	UPRC 21-3J	40.215863°	-104.670167°
6	FRANK-UPRR 31-21	40.216499°	-104.666548°
7	UPRR 22 PAN AM UNIT U 1	40.215418°	-104.665131°
8	MOSER 21-21	40.215554°	-104.665116°
9	MOSER 27-21	40.215554°	-104.665015°
10	MOSER 17-21	40.215554°	-104.664914°
11	MOSER 41-21	40.215554°	-104.664809°
12	FRANK 41-21	40.216670°	-104.661560°
13	UPRC 21-5J	40.213108°	-104.675145°
14	EMMA H 21-19	40.214547°	-104.673077°
15	UPRC 21-6J	40.213222°	-104.670242°
16	FRANK UPRR 32-21 #3	40.212549°	-104.665689°
17	FRANK-UPRR 42-21	40.212833°	-104.661656°
18	MOSER H 21-20	40.211103°	-104.673106°
19	MOSER H21-21	40.210736°	-104.669737°
20	FRANK H21-10	40.209434°	-104.667477°
21	MOSER 24-21	40.209613°	-104.661262°
22	MOSER 40-21	40.209615°	-104.661157°
23	MOSER 9-21	40.209618°	-104.661046°
24	FRANK H21-12	40.209027°	-104.674912°
25	FRANK H21-11	40.208777°	-104.671164°
26	FRANK 43-21 4	40.208240°	-104.662759°
27	MOSER H 21-33	40.207332°	-104.677295°
28	MOSER H28-30	40.204169°	-104.677178°
29	FRANK H21-13	40.205731°	-104.674771°
30	*FRANK 1-21C	40.206440°	-104.672218°
31	FRANK H21-15	40.204434°	-104.666881°
32	FRANK H21-16	40.204965°	-104.660917°

NOTES:

- * INDICATES EXISTING WELLS THAT WERE NOT SURVEYED BUT DERIVED FROM COLORADO OIL AND GAS CONSERVATION COMMISSION (COGCC).

**EXISTING WELL EXHIBIT
SECTION 21, T3N, R65W, 6TH P.M.
WELD COUNTY, COLORADO**

**Kerr-McGee Oil &
Gas Onshore L.P.**
1099 18th Street
Denver, Colorado 80202



CONSULTING, LLC

SHERIDAN OFFICE 2155 North Main Street Sheridan, Wyoming 82801 Phone 307-674-0609	LOVELAND OFFICE 1635 Foxtrail Drive, Suite 204 Loveland, Colorado 80538 Phone 970-776-4331
---	--

DRAFTED BY: LMO	CHECKED BY: BJR	2A 2A OF 2
DATE DRAFTED: 8/5/14	DATE SURVEYED: 7/23/14	
REVISED:	FILE NAME: 14-46	

MULTI-WELL PLAN SECTION 28, T3N, R65W

NUMBER	WELL NAME	NAD 83	
		LATITUDE	LONGITUDE
33	MOSER 28-4	40.201844°	-104.675591°
34	MOSER H 28-29	40.203187°	-104.673532°
35	MOSER 28-3	40.202337°	-104.670920°
36	*MOSER 28-2	40.202326°	-104.666856°
37	MOSER H 28-27	40.203065°	-104.663988°
38	MOSER 41-28	40.200800°	-104.662970°
39	MOSER H 28-1	40.202368°	-104.661039°
40	MOSER 28-5	40.198618°	-104.675661°
41	MOSER 22-28	40.199426°	-104.672093°
42	MOSER 28-7	40.197811°	-104.665617°
43	MOSER 28-8	40.197737°	-104.660900°
44	MOORE UPRC H 28-12	40.194517°	-104.676314°
45	MOSER 11-28	40.194604°	-104.670827°
46	MOSER 22-28	40.194726°	-104.670744°
47	MOSER 6-28	40.194698°	-104.670699°
48	MOSER H28-24	40.193281°	-104.668284°
49	*CANNON LAND 28-10J	40.195136°	-104.666762°
50	CANNON 3-28 1	40.193477°	-104.662749°
51	MOSER H 27-32	40.195645°	-104.659861°
52	MOSER 33-28	40.190534°	-104.676236°
53	MOSER 13-28	40.190450°	-104.676238°
54	MOORE UPRC H 28-13	40.191881°	-104.674416°
55	MOSER 14-28	40.190977°	-104.670582°
56	MOSER 35-28	40.190854°	-104.670579°
57	CANNON LAND 28-15J	40.191513°	-104.666693°
58	CANNON LAND 28-16J	40.191499°	-104.660707°

NOTES:

- * INDICATES EXISTING WELLS THAT WERE NOT SURVEYED BUT DERIVED FROM COLORADO OIL AND GAS CONSERVATION COMMISSION (COGCC).

**EXISTING WELL EXHIBIT
SECTION 28, T3N, R65W, 6TH P.M.
WELD COUNTY, COLORADO**

**Kerr-McGee Oil &
Gas Onshore L.P.
1099 18th Street
Denver, Colorado 80202**



CONSULTING, LLC

SHERIDAN OFFICE 2155 North Main Street Sheridan, Wyoming 82801 Phone 307-674-0609	LOVELAND OFFICE 1635 Foxtrail Drive, Suite 204 Loveland, Colorado 80538 Phone 970-776-4331
---	--

DRAFTED BY:	LMO	CHECKED BY:	BJR	2B SHEET NO: 2B OF 2
DATE DRAFTED:	8/5/14	DATE SURVEYED:	7/23/14	
REVISED:		FILE NAME:	14-46	