



410 17th Street, Suite 1500
Denver, CO 80202
(720) 440-6100 phone
(720) 305-0804 fax

Bonanzacrk.com

November 18, 2014

Colorado Oil and Gas Conservation Commission
The Chancery Building
1120 Lincoln Street, Suite 801
Denver, CO 80203

Attn: Matthew Lepore, Director

Re: Notice of 318A.a(4).D Well Proposal
State Antelope B11-V41-2HNC
SHL: NWNW (1322' FNL, 405' FWL) Section 2-T5N-R62W, Weld County, CO
Top of Production: (990' FNL and 631' FWL) Section 2-T5N-R62W, Weld County, CO
Bottom of Production: (990' FNL and 470' FEL) Section 2-T5N-R62W, Weld County, CO

Dear Director Lepore:

Bonanza Creek Energy, Inc. (Bonanza) intends to permit, drill and operate the referenced Niobrara Horizontal Well. As defined by Colorado Oil and Gas Conservation Commission (COGCC) Rule 318A.a.(4)D., Bonanza proposes the following wellbore spacing unit:

Lots 1 – 4 & S/2N/2 Section 2-T5N-R62W, Weld County, CO – containing 320 acres more or less

Bonanza is the sole mineral lease holder in the proposed spacing unit, and no mineral owner notifications were required.

Bonanza respectfully requests that you review the enclosed wellbore spacing unit documentation and approve the referenced APD.

Please do not hesitate to call or email me at (720) 440-6112 or Kcaplan@Bonanzacrk.com, should you have any questions pertaining to this matter.

Thank you for your cooperation.

Sincerely,

A handwritten signature in blue ink that reads 'Keith J. Caplan'.

Keith Caplan,
Sr. Regulatory Specialist
BONANZA CREEK ENERGY, INC.
BONANZA CREEK ENERGY OPERATING COMPANY, LLC

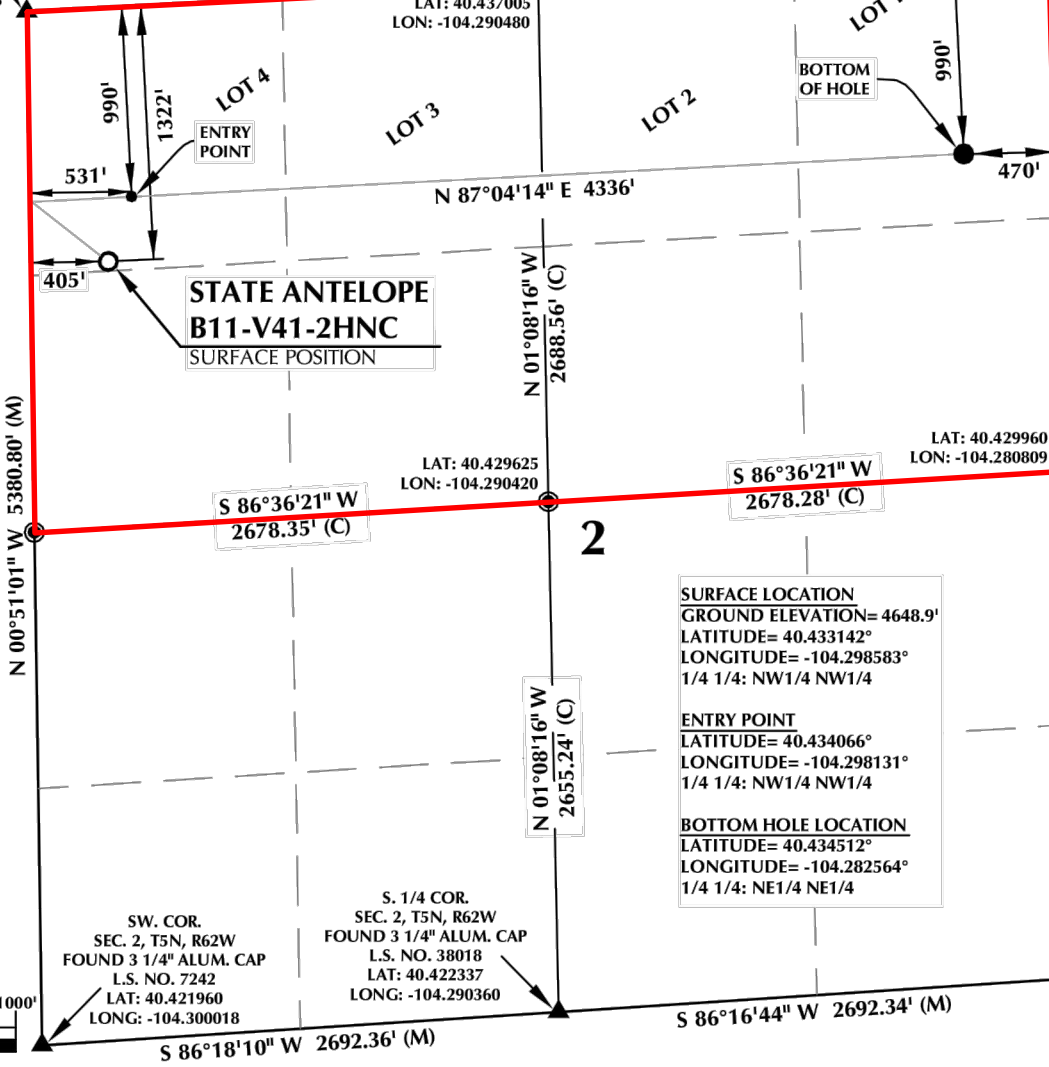
Enclosure

T5N, R62W

NW COR.
SEC. 2, T5N, R62W
FOUND 3 1/4" ALUM. CAP
L.S. NO. 7242
LAT: 40.436731
LONG: -104.300043

NE COR.
SEC. 2, T5N, R62W
FOUND 3 1/4" ALUM. CAP
L.S. NO. 32828
LAT: 40.437279
LONG: -104.280916

S 87°04'14" W 5327.94' (M)
LAT: 40.437005
LON: -104.290480



LAT: 40.429290
LON: -104.300031

LAT: 40.429625
LON: -104.290420

LAT: 40.429960
LON: -104.280809

SURFACE LOCATION
GROUND ELEVATION= 4648.9'
LATITUDE= 40.433142°
LONGITUDE= -104.298583°
1/4 1/4: NW1/4 NW1/4

ENTRY POINT
LATITUDE= 40.434066°
LONGITUDE= -104.298131°
1/4 1/4: NW1/4 NW1/4

BOTTOM HOLE LOCATION
LATITUDE= 40.434512°
LONGITUDE= -104.282564°
1/4 1/4: NE1/4 NE1/4

SW COR.
SEC. 2, T5N, R62W
FOUND 3 1/4" ALUM. CAP
L.S. NO. 7242
LAT: 40.421960
LONG: -104.300018

S. 1/4 COR.
SEC. 2, T5N, R62W
FOUND 3 1/4" ALUM. CAP
L.S. NO. 38018
LAT: 40.422337
LONG: -104.290360

SE COR.
SEC. 2, T5N, R62W
FOUND 3 1/4" ALUM. CAP
L.S. NO. 7735
LAT: 40.22715
LONG: -104.280703

NOTES:

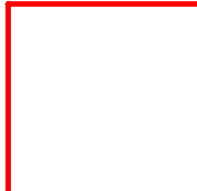
- ▲ INDICATES FOUND SECTION CORNER
- INDICATES CALCULATED CORNER
- DRAWING LATITUDE AND LONGITUDE COORDINATES ARE NAD83 (2011)(EPOCH:2010)
- ELEVATION BASED ON NAVD88 (GEOID09)
- BASIS OF BEARING DERIVED FROM COLORADO COORDINATE

CERTIFICATE OF SURVEYOR:

THIS IS TO CERTIFY THAT THE ABOVE PLAT WAS PREPARED FROM FIELD NOTES OF ACTUAL SURVEY MADE BY ME OR UNDER MY SUPERVISION AND TO AT THE SAME ACCURACY AND CORRECT TO THE BEST OF MY KNOWLEDGE AND BELIEF.

NEAREST CULTURAL ITEMS:

BUILDING: 5280'+
BUILDING UNIT: 5280'+
HIGH OCCUPANCY BUILDING UNIT: 5280'+
DESIGNATED OUTSIDE ACTIVITY AREA: 5280'+



Wellbore Spacing Unit Outline



Wellbore Spacing Unit Map

18 November 2014 ksc

State Antelope B11-V41-2HNC
Lots 1-4 Sec 2-T5N-R62W 6th PM
S/2N/2 Sec 2-T5N-R62W 6th PM
Weld County, Colorado