

BONANZA CREEK ENERGY INC.

WELD COUNTY, COLORADO (NAD 83)

NW NW SEC. 2 T5N R62W 6th P.M.

STATE ANTELOPE B11-V41-2HNC

ORIGINAL WELLBORE

19 November, 2014

Plan: PROPOSAL #2





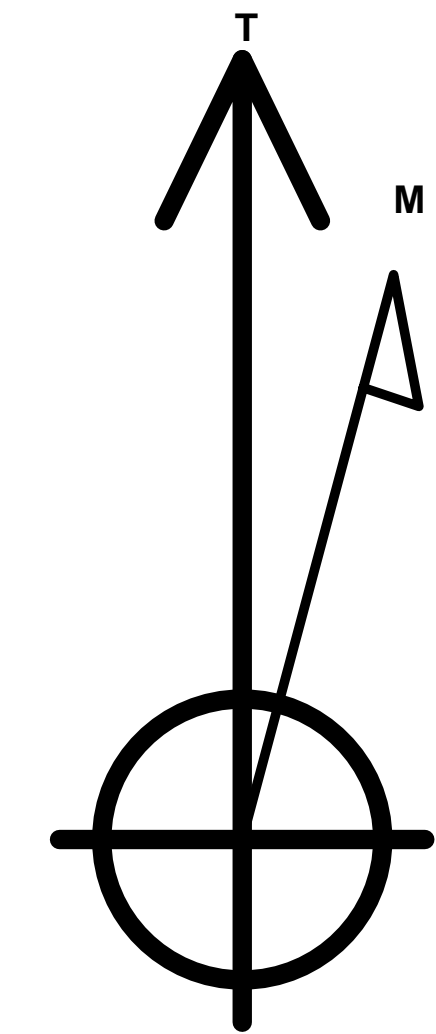
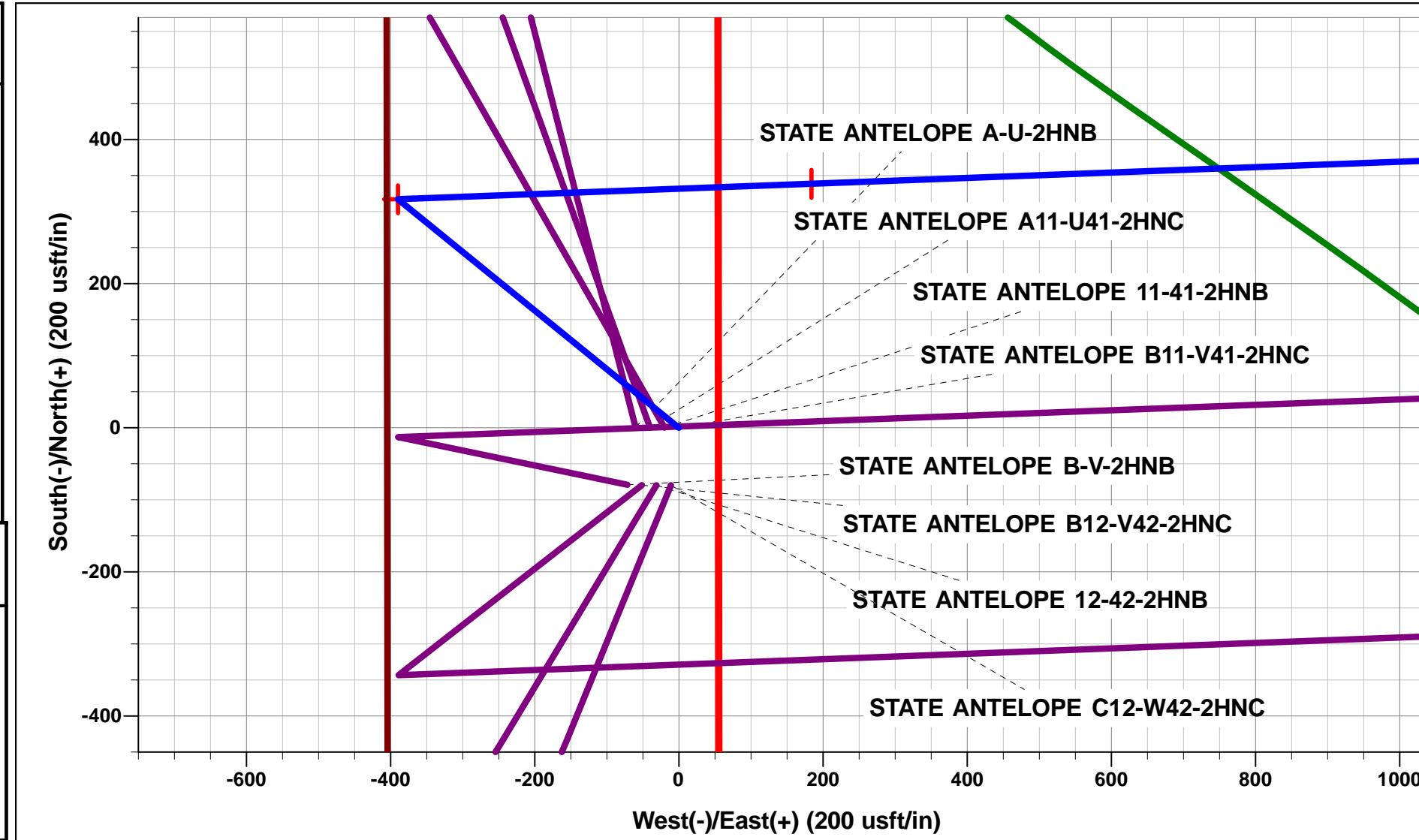
Project: WELD COUNTY, COLORADO (NAD 83)
 Site: NW NW SEC. 2 T5N R62W 6th P.M.
 Well: STATE ANTELOPE B11-V41-2HNC
 Wellbore: ORIGINAL WELLBORE
 Design: PROPOSAL #2

ANNOTATIONS

TVD	MD	Inc	Azi	+N/-S	+E/-W	Vsect	Dep	Annotation
1200.0	1200.0	0.00	0.00	0.0	0.0	0.0	0.0	START NUDGE (2°/100ft BUR)
1541.2	1542.0	6.84	309.14	12.9	-15.8	-14.3	20.4	EOB TO 6.84° INC
5391.5	5419.9	6.84	309.14	304.3	-374.0	-337.8	482.2	END OF TANGENT
5732.6	5761.8	0.00	0.00	317.2	-389.8	-352.1	502.6	EOD TO VERTICAL
5762.6	5791.8	0.00	0.00	317.2	-389.8	-352.1	502.6	KOP (12°/100ft BUR)
6223.8	6416.8	75.00	87.86	330.4	-36.2	0.9	856.4	START OF TANGENT
6249.7	6516.8	75.00	87.86	334.0	60.4	97.2	953.0	END OF TANGENT
6265.9	6641.8	90.00	87.86	338.6	183.9	220.4	1076.6	7" ICP (P2) *NEW* - STATE ANTELOPE B11-V41-2HNC
6265.9	10920.3	90.00	87.83	499.5	4459.3	4487.2	5355.1	BHL (P2) - STATE ANTELOPE B11-V41-2HNC

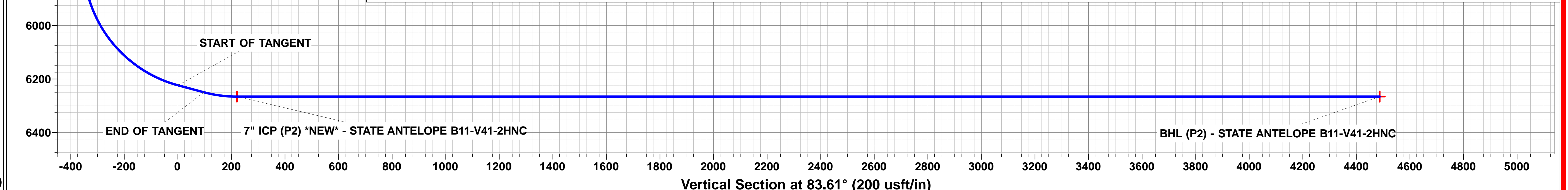
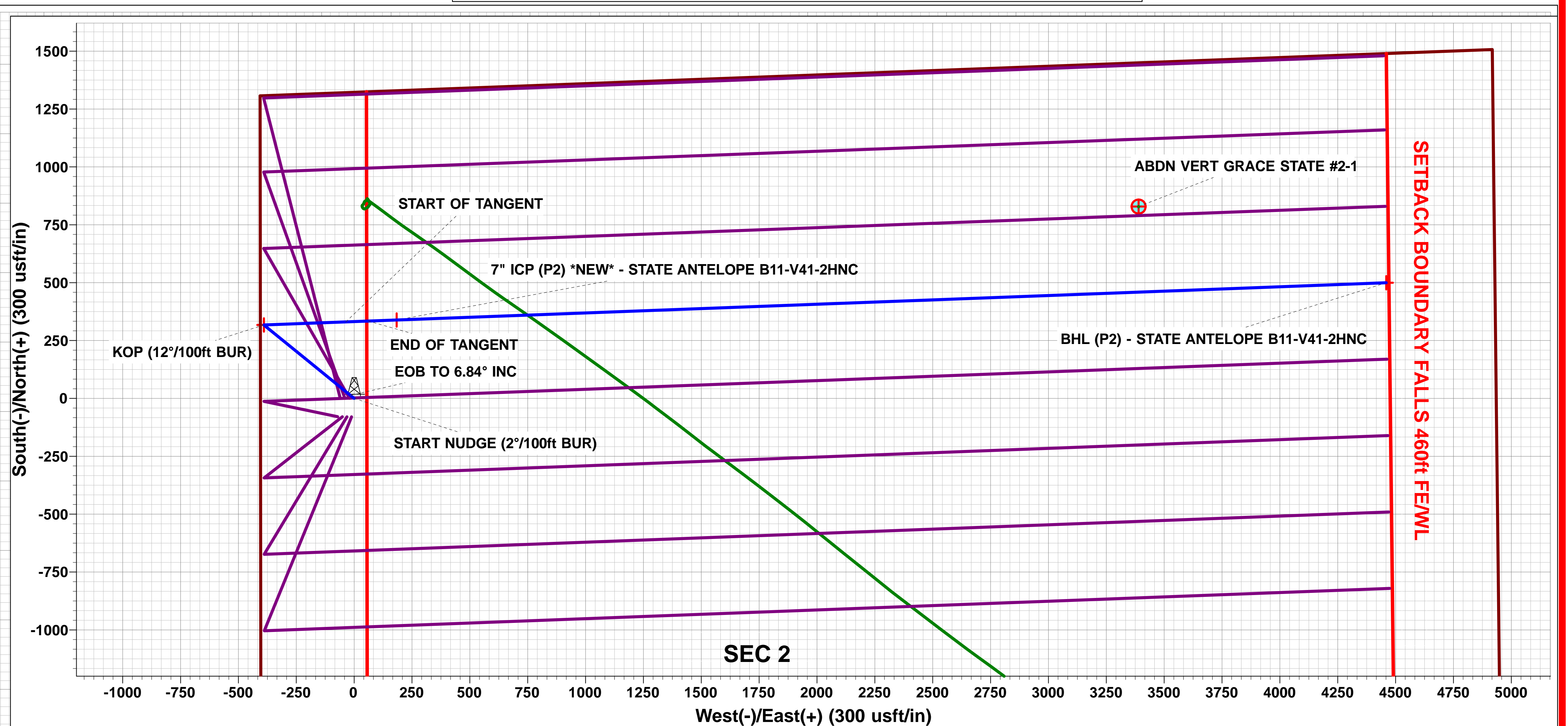
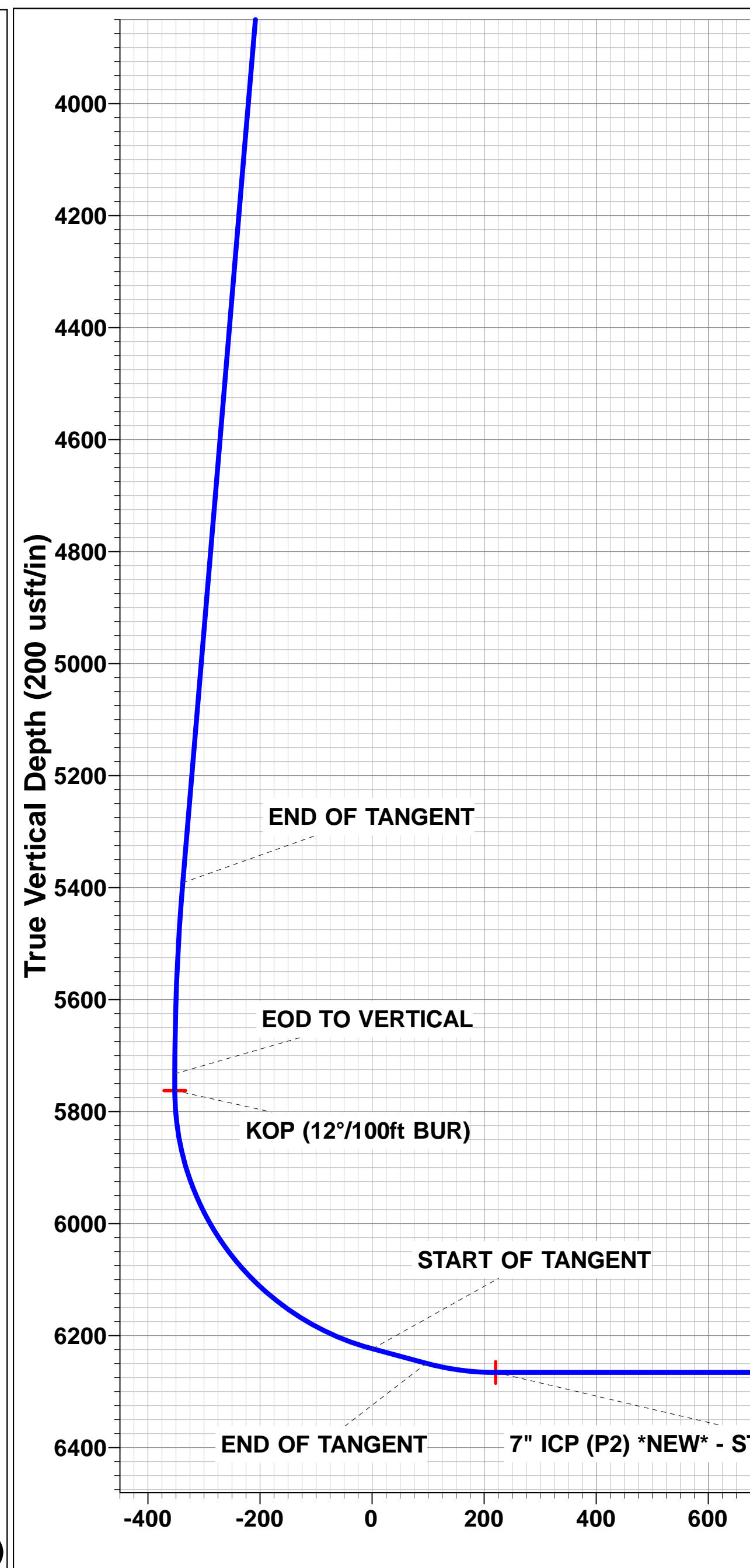
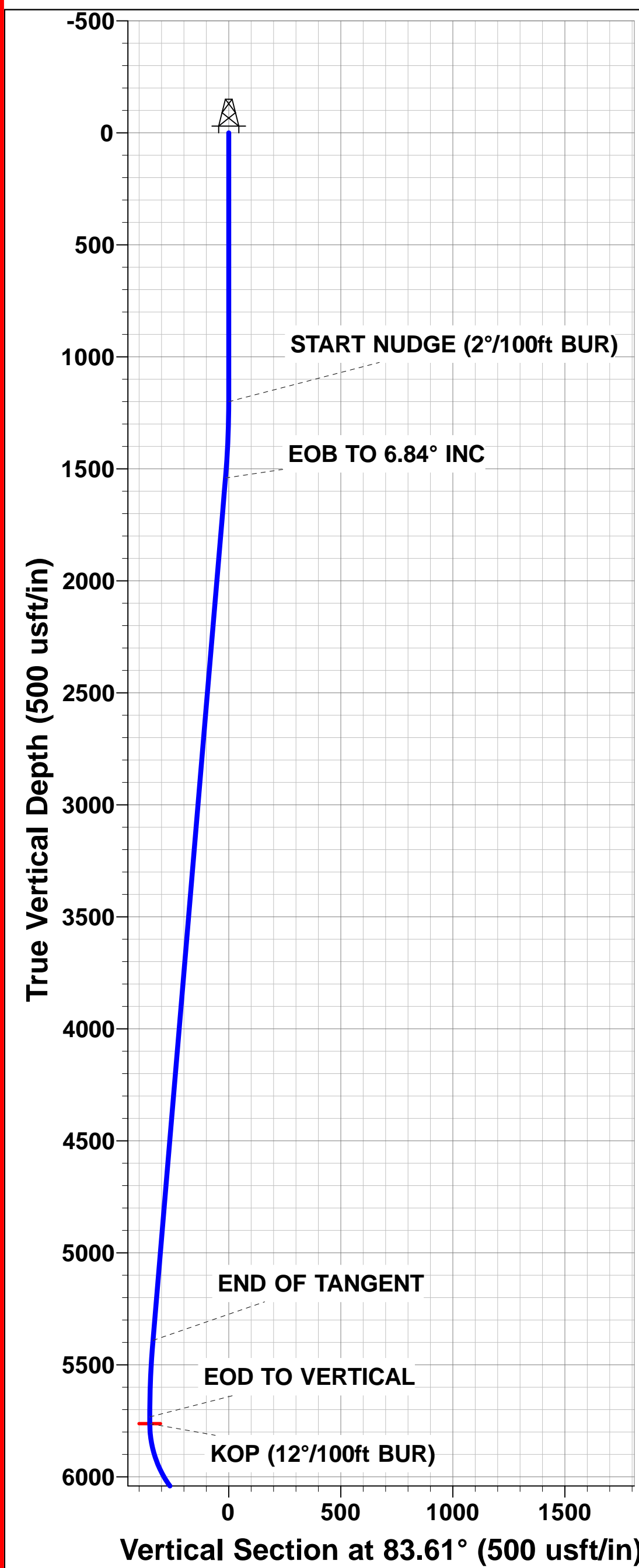
WELLBORE TARGET DETAILS (LAT/LONG)

Name	TVD	+N/-S	+E/-W	Latitude	Longitude
KOP (P2) - STATE ANTELOPE B11-V41-2HNC	5762.6	317.2	-389.8	40.434013	-104.299983
BHL (P2) - STATE ANTELOPE B11-V41-2HNC	6265.9	499.5	4459.4	40.434512	-104.282564
7" ICP (P2) *NEW* - STATE ANTELOPE B11-V41-2HNC	6265.9	338.6	183.9	40.434071	-104.297922



Azimuths to True North
 Magnetic North: 8.17°

Magnetic Field
 Strength: 52851.2snT
 Dip Angle: 67.04°
 Date: 29/09/2014
 Model: IGRF2010



Planning Report



Database:	EDM 5000.1 Single User Db	Local Co-ordinate Reference:	Well STATE ANTELOPE B11-V41-2HNC
Company:	BONANZA CREEK ENERGY INC.	TVD Reference:	KB-EST @ 4665.9usft (Original Well Elev)
Project:	WELD COUNTY, COLORADO (NAD 83)	MD Reference:	KB-EST @ 4665.9usft (Original Well Elev)
Site:	NW NW SEC. 2 T5N R62W 6th P.M.	North Reference:	True
Well:	STATE ANTELOPE B11-V41-2HNC	Survey Calculation Method:	Minimum Curvature
Wellbore:	ORIGINAL WELLBORE		
Design:	PROPOSAL #2		

Project	WELD COUNTY, COLORADO (NAD 83)		
Map System:	US State Plane 1983	System Datum:	Mean Sea Level
Geo Datum:	North American Datum 1983		
Map Zone:	Colorado Northern Zone		Using geodetic scale factor

Site	NW NW SEC. 2 T5N R62W 6th P.M.				
Site Position:		Northing:	1,402,899.64 usft	Latitude:	40.433143
From:	Lat/Long	Easting:	3,334,413.22 usft	Longitude:	-104.298655
Position Uncertainty:	0.0 usft	Slot Radius:	1.10000ft	Grid Convergence:	0.78 °

Well	STATE ANTELOPE B11-V41-2HNC					
Well Position	+N-S	-0.4 usft	Northing:	1,402,899.54 usfi	Latitude:	40.433142
	+E-W	20.0 usft	Easting:	3,334,433.27 usfi	Longitude:	-104.298583
Position Uncertainty		0.0 usft	Wellhead Elevation:	usfi	Ground Level:	4,648.9 usft

Wellbore	ORIGINAL WELLBORE				
Magnetics	Model Name	Sample Date	Declination (°)	Dip Angle (°)	Field Strength (nT)
	IGRF2010	29/09/2014	8.17	67.04	52,851

Design	PROPOSAL #2			
Audit Notes:				
Version:	Phase:	PROTOTYPE	Tie On Depth:	0.0
Vertical Section:	Depth From (TVD) (usft)	+N-S (usft)	+E-W (usft)	Direction (°)
	6,265.9	0.0	0.0	83.61

Plan Sections											
MD (usft)	Inc (°)	Azi (°)	Vertical Depth	SS (usft)	+N-S (usft)	+E-W (usft)	Dogleg Rate (°/100usf)	Build Rate (°/100usf)	Turn Rate (°/100usf)	TFO (°)	Target
0.0	0.00	0.00	0.0	-4,665.9	0.0	0.0	0.00	0.00	0.00	0.00	
1,200.0	0.00	0.00	1,200.0	-3,465.9	0.0	0.0	0.00	0.00	0.00	0.00	
1,542.0	6.84	309.14	1,541.1	-3,124.8	12.9	-15.8	2.00	2.00	0.00	309.14	
5,419.9	6.84	309.14	5,391.5	725.6	304.3	-374.0	0.00	0.00	0.00	0.00	
5,761.8	0.00	0.00	5,732.6	1,066.7	317.2	-389.8	2.00	-2.00	0.00	180.00	
5,791.8	0.00	0.00	5,762.6	1,096.7	317.2	-389.8	0.00	0.00	0.00	0.00	KOP (P2) - STATE
6,416.8	75.00	87.86	6,223.8	1,557.9	330.4	-36.2	12.00	12.00	0.00	87.86	
6,516.8	75.00	87.86	6,249.7	1,583.8	334.0	60.4	0.00	0.00	0.00	0.00	
6,641.8	90.00	87.86	6,265.9	1,600.0	338.6	183.9	12.00	12.00	0.00	0.00	
10,920.3	90.00	87.83	6,265.9	1,600.0	499.5	4,459.4	0.00	0.00	0.00	-87.61	BHL (P2) - STATE

Planning Report



Database:	EDM 5000.1 Single User Db	Local Co-ordinate Reference:	Well STATE ANTELOPE B11-V41-2HNC
Company:	BONANZA CREEK ENERGY INC.	TVD Reference:	KB-EST @ 4665.9usft (Original Well Elev)
Project:	WELD COUNTY, COLORADO (NAD 83)	MD Reference:	KB-EST @ 4665.9usft (Original Well Elev)
Site:	NW NW SEC. 2 T5N R62W 6th P.M.	North Reference:	True
Well:	STATE ANTELOPE B11-V41-2HNC	Survey Calculation Method:	Minimum Curvature
Wellbore:	ORIGINAL WELLBORE		
Design:	PROPOSAL #2		

Planned Survey										
MD (usft)	Inc (°)	Azi (°)	TVD (usft)	SS (usft)	+N/-S (usft)	+E/-W (usft)	Vertical Section (usft)	Dogleg Rate (°/100usft)	Build Rate (°/100usft)	Turn Rate (°/100usft)
0.0	0.00	0.00	0.0	4,665.90	0.0	0.0	0.0	0.00	0.00	0.00
100.0	0.00	0.00	100.0	4,565.90	0.0	0.0	0.0	0.00	0.00	0.00
200.0	0.00	0.00	200.0	4,465.90	0.0	0.0	0.0	0.00	0.00	0.00
300.0	0.00	0.00	300.0	4,365.90	0.0	0.0	0.0	0.00	0.00	0.00
400.0	0.00	0.00	400.0	4,265.90	0.0	0.0	0.0	0.00	0.00	0.00
500.0	0.00	0.00	500.0	4,165.90	0.0	0.0	0.0	0.00	0.00	0.00
600.0	0.00	0.00	600.0	4,065.90	0.0	0.0	0.0	0.00	0.00	0.00
700.0	0.00	0.00	700.0	3,965.90	0.0	0.0	0.0	0.00	0.00	0.00
800.0	0.00	0.00	800.0	3,865.90	0.0	0.0	0.0	0.00	0.00	0.00
900.0	0.00	0.00	900.0	3,765.90	0.0	0.0	0.0	0.00	0.00	0.00
1,000.0	0.00	0.00	1,000.0	3,665.90	0.0	0.0	0.0	0.00	0.00	0.00
1,100.0	0.00	0.00	1,100.0	3,565.90	0.0	0.0	0.0	0.00	0.00	0.00
START NUDGE (2°/100ft BUR)										
1,200.0	0.00	0.00	1,200.0	3,465.90	0.0	0.0	0.0	0.00	0.00	0.00
1,300.0	2.00	309.14	1,300.0	3,365.92	1.1	-1.4	-1.2	2.00	2.00	0.00
1,400.0	4.00	309.14	1,399.8	3,266.06	4.4	-5.4	-4.9	2.00	2.00	0.00
1,500.0	6.00	309.14	1,499.5	3,166.45	9.9	-12.2	-11.0	2.00	2.00	0.00
EOB TO 6.84° INC										
1,542.0	6.84	309.14	1,541.2	3,124.71	12.9	-15.8	-14.3	2.00	2.00	0.00
1,600.0	6.84	309.14	1,598.8	3,067.12	17.2	-21.2	-19.1	0.00	0.00	0.00
1,700.0	6.84	309.14	1,698.1	2,967.84	24.7	-30.4	-27.5	0.00	0.00	0.00
1,800.0	6.84	309.14	1,797.4	2,868.55	32.3	-39.6	-35.8	0.00	0.00	0.00
1,900.0	6.84	309.14	1,896.6	2,769.26	39.8	-48.9	-44.1	0.00	0.00	0.00
2,000.0	6.84	309.14	1,995.9	2,669.97	47.3	-58.1	-52.5	0.00	0.00	0.00
2,100.0	6.84	309.14	2,095.2	2,570.68	54.8	-67.4	-60.8	0.00	0.00	0.00
2,200.0	6.84	309.14	2,194.5	2,471.39	62.3	-76.6	-69.2	0.00	0.00	0.00
2,300.0	6.84	309.14	2,293.8	2,372.11	69.8	-85.8	-77.5	0.00	0.00	0.00
2,400.0	6.84	309.14	2,393.1	2,272.82	77.4	-95.1	-85.9	0.00	0.00	0.00
2,500.0	6.84	309.14	2,492.4	2,173.53	84.9	-104.3	-94.2	0.00	0.00	0.00
2,600.0	6.84	309.14	2,591.7	2,074.24	92.4	-113.5	-102.5	0.00	0.00	0.00
2,700.0	6.84	309.14	2,690.9	1,974.95	99.9	-122.8	-110.9	0.00	0.00	0.00
2,800.0	6.84	309.14	2,790.2	1,875.66	107.4	-132.0	-119.2	0.00	0.00	0.00
2,900.0	6.84	309.14	2,889.5	1,776.37	114.9	-141.2	-127.6	0.00	0.00	0.00
3,000.0	6.84	309.14	2,988.8	1,677.09	122.5	-150.5	-135.9	0.00	0.00	0.00
3,100.0	6.84	309.14	3,088.1	1,577.80	130.0	-159.7	-144.3	0.00	0.00	0.00
3,200.0	6.84	309.14	3,187.4	1,478.51	137.5	-169.0	-152.6	0.00	0.00	0.00
3,300.0	6.84	309.14	3,286.7	1,379.22	145.0	-178.2	-160.9	0.00	0.00	0.00
3,400.0	6.84	309.14	3,386.0	1,279.93	152.5	-187.4	-169.3	0.00	0.00	0.00
3,500.0	6.84	309.14	3,485.3	1,180.64	160.0	-196.7	-177.6	0.00	0.00	0.00
3,600.0	6.84	309.14	3,584.5	1,081.36	167.6	-205.9	-186.0	0.00	0.00	0.00
3,700.0	6.84	309.14	3,683.8	982.07	175.1	-215.1	-194.3	0.00	0.00	0.00
3,800.0	6.84	309.14	3,783.1	882.78	182.6	-224.4	-202.7	0.00	0.00	0.00
3,900.0	6.84	309.14	3,882.4	783.49	190.1	-233.6	-211.0	0.00	0.00	0.00
4,000.0	6.84	309.14	3,981.7	684.20	197.6	-242.8	-219.3	0.00	0.00	0.00
4,100.0	6.84	309.14	4,081.0	584.91	205.1	-252.1	-227.7	0.00	0.00	0.00
4,200.0	6.84	309.14	4,180.3	485.62	212.6	-261.3	-236.0	0.00	0.00	0.00
4,300.0	6.84	309.14	4,279.6	386.34	220.2	-270.6	-244.4	0.00	0.00	0.00
4,400.0	6.84	309.14	4,378.9	287.05	227.7	-279.8	-252.7	0.00	0.00	0.00
4,500.0	6.84	309.14	4,478.1	187.76	235.2	-289.0	-261.0	0.00	0.00	0.00
4,600.0	6.84	309.14	4,577.4	88.47	242.7	-298.3	-269.4	0.00	0.00	0.00
4,700.0	6.84	309.14	4,676.7	-10.82	250.2	-307.5	-277.7	0.00	0.00	0.00
4,800.0	6.84	309.14	4,776.0	-110.11	257.7	-316.7	-286.1	0.00	0.00	0.00
4,900.0	6.84	309.14	4,875.3	-209.39	265.3	-326.0	-294.4	0.00	0.00	0.00
5,000.0	6.84	309.14	4,974.6	-308.68	272.8	-335.2	-302.8	0.00	0.00	0.00

Planning Report



Database:	EDM 5000.1 Single User Db	Local Co-ordinate Reference:	Well STATE ANTELOPE B11-V41-2HNC
Company:	BONANZA CREEK ENERGY INC.	TVD Reference:	KB-EST @ 4665.9usft (Original Well Elev)
Project:	WELD COUNTY, COLORADO (NAD 83)	MD Reference:	KB-EST @ 4665.9usft (Original Well Elev)
Site:	NW NW SEC. 2 T5N R62W 6th P.M.	North Reference:	True
Well:	STATE ANTELOPE B11-V41-2HNC	Survey Calculation Method:	Minimum Curvature
Wellbore:	ORIGINAL WELLBORE		
Design:	PROPOSAL #2		

Planned Survey										
MD (usft)	Inc (°)	Azi (°)	TVD (usft)	SS (usft)	+N/-S (usft)	+E/-W (usft)	Vertical Section (usft)	Dogleg Rate (°/100usft)	Build Rate (°/100usft)	Turn Rate (°/100usft)
5,100.0	6.84	309.14	5,073.9	-407.97	280.3	-344.4	-311.1	0.00	0.00	0.00
5,200.0	6.84	309.14	5,173.2	-507.26	287.8	-353.7	-319.4	0.00	0.00	0.00
5,300.0	6.84	309.14	5,272.4	-606.55	295.3	-362.9	-327.8	0.00	0.00	0.00
5,400.0	6.84	309.14	5,371.7	-705.84	302.8	-372.2	-336.1	0.00	0.00	0.00
END OF TANGENT										
5,419.9	6.84	309.14	5,391.5	-725.60	304.3	-374.0	-337.8	0.00	0.00	0.00
5,500.0	5.24	309.14	5,471.1	-805.25	309.7	-380.5	-343.7	2.00	-2.00	0.00
5,600.0	3.24	309.14	5,570.9	-904.97	314.3	-386.3	-348.9	2.00	-2.00	0.00
5,700.0	1.24	309.14	5,670.8	-1,004.89	316.8	-389.3	-351.6	2.00	-2.00	0.00
EOD TO VERTICAL										
5,761.8	0.00	0.00	5,732.6	-1,066.71	317.2	-389.8	-352.1	2.00	-2.00	0.00
KOP (12°/100ft BUR)										
5,791.8	0.00	0.00	5,762.6	-1,096.70	317.2	-389.8	-352.1	0.00	0.00	0.00
5,800.0	0.98	87.86	5,770.8	-1,104.88	317.2	-389.7	-352.0	12.00	12.00	0.00
5,900.0	12.98	87.86	5,869.9	-1,203.96	317.7	-377.6	-339.9	12.00	12.00	0.00
6,000.0	24.98	87.86	5,964.3	-1,298.35	318.9	-345.2	-307.5	12.00	12.00	0.00
6,100.0	36.98	87.86	6,049.8	-1,383.93	320.8	-293.8	-256.3	12.00	12.00	0.00
6,200.0	48.98	87.86	6,122.8	-1,456.95	323.3	-225.8	-188.4	12.00	12.00	0.00
6,300.0	60.98	87.86	6,180.1	-1,514.23	326.4	-144.1	-106.9	12.00	12.00	0.00
6,400.0	72.98	87.86	6,219.2	-1,553.26	329.8	-52.3	-15.3	12.00	12.00	0.00
START OF TANGENT										
6,416.8	75.00	87.86	6,223.8	-1,557.90	330.4	-36.2	0.9	11.99	11.99	0.00
6,500.0	75.00	87.86	6,245.3	-1,579.43	333.4	44.1	81.0	0.00	0.00	0.00
END OF TANGENT										
6,516.8	75.00	87.86	6,249.7	-1,583.78	334.0	60.4	97.2	0.00	0.00	0.00
6,600.0	84.98	87.86	6,264.1	-1,598.22	337.1	142.1	178.8	12.00	12.00	0.00
7" ICP (P2) *NEW* - STATE ANTELOPE B11-V41-2HNC										
6,641.8	90.00	87.86	6,265.9	-1,600.05	338.6	183.9	220.4	12.00	12.00	0.00
6,700.0	90.00	87.86	6,265.9	-1,600.05	340.8	242.0	278.4	0.00	0.00	0.00
6,800.0	90.00	87.86	6,265.9	-1,600.05	344.5	341.9	378.2	0.00	0.00	0.00
6,900.0	90.00	87.86	6,265.9	-1,600.05	348.3	441.9	477.9	0.00	0.00	0.00
7,000.0	90.00	87.86	6,265.9	-1,600.05	352.0	541.8	577.6	0.00	0.00	0.00
7,100.0	90.00	87.86	6,265.9	-1,600.05	355.8	641.7	677.3	0.00	0.00	0.00
7,200.0	90.00	87.86	6,265.9	-1,600.05	359.5	741.7	777.1	0.00	0.00	0.00
7,300.0	90.00	87.86	6,265.9	-1,600.05	363.2	841.6	876.8	0.00	0.00	0.00
7,400.0	90.00	87.85	6,265.9	-1,600.05	367.0	941.5	976.5	0.00	0.00	0.00
7,500.0	90.00	87.85	6,265.9	-1,600.04	370.7	1,041.4	1,076.2	0.00	0.00	0.00
7,600.0	90.00	87.85	6,265.9	-1,600.04	374.5	1,141.4	1,176.0	0.00	0.00	0.00
7,700.0	90.00	87.85	6,265.9	-1,600.04	378.2	1,241.3	1,275.7	0.00	0.00	0.00
7,800.0	90.00	87.85	6,265.9	-1,600.04	382.0	1,341.2	1,375.4	0.00	0.00	0.00
7,900.0	90.00	87.85	6,265.9	-1,600.04	385.7	1,441.2	1,475.1	0.00	0.00	0.00
8,000.0	90.00	87.85	6,265.9	-1,600.04	389.5	1,541.1	1,574.9	0.00	0.00	0.00
8,100.0	90.00	87.85	6,265.9	-1,600.04	393.2	1,641.0	1,674.6	0.00	0.00	0.00
8,200.0	90.00	87.85	6,265.9	-1,600.04	397.0	1,740.9	1,774.3	0.00	0.00	0.00
8,300.0	90.00	87.85	6,265.9	-1,600.04	400.7	1,840.9	1,874.0	0.00	0.00	0.00
8,400.0	90.00	87.85	6,265.9	-1,600.04	404.5	1,940.8	1,973.8	0.00	0.00	0.00
8,500.0	90.00	87.85	6,265.9	-1,600.04	408.2	2,040.7	2,073.5	0.00	0.00	0.00
8,600.0	90.00	87.85	6,265.9	-1,600.04	412.0	2,140.7	2,173.2	0.00	0.00	0.00
8,700.0	90.00	87.85	6,265.9	-1,600.04	415.8	2,240.6	2,273.0	0.00	0.00	0.00
8,800.0	90.00	87.84	6,265.9	-1,600.03	419.5	2,340.5	2,372.7	0.00	0.00	0.00
8,900.0	90.00	87.84	6,265.9	-1,600.03	423.3	2,440.5	2,472.4	0.00	0.00	0.00
9,000.0	90.00	87.84	6,265.9	-1,600.03	427.0	2,540.4	2,572.1	0.00	0.00	0.00
9,100.0	90.00	87.84	6,265.9	-1,600.03	430.8	2,640.3	2,671.9	0.00	0.00	0.00

Planning Report



Database:	EDM 5000.1 Single User Db	Local Co-ordinate Reference:	Well STATE ANTELOPE B11-V41-2HNC
Company:	BONANZA CREEK ENERGY INC.	TVD Reference:	KB-EST @ 4665.9usft (Original Well Elev)
Project:	WELD COUNTY, COLORADO (NAD 83)	MD Reference:	KB-EST @ 4665.9usft (Original Well Elev)
Site:	NW NW SEC. 2 T5N R62W 6th P.M.	North Reference:	True
Well:	STATE ANTELOPE B11-V41-2HNC	Survey Calculation Method:	Minimum Curvature
Wellbore:	ORIGINAL WELLBORE		
Design:	PROPOSAL #2		

Planned Survey										
MD (usft)	Inc (°)	Azi (°)	TVD (usft)	SS (usft)	+N/-S (usft)	+E/-W (usft)	Vertical Section (usft)	Dogleg Rate (°/100usft)	Build Rate (°/100usft)	Turn Rate (°/100usft)
9,200.0	90.00	87.84	6,265.9	-1,600.03	434.6	2,740.2	2,771.6	0.00	0.00	0.00
9,300.0	90.00	87.84	6,265.9	-1,600.03	438.3	2,840.2	2,871.3	0.00	0.00	0.00
9,400.0	90.00	87.84	6,265.9	-1,600.03	442.1	2,940.1	2,971.0	0.00	0.00	0.00
9,500.0	90.00	87.84	6,265.9	-1,600.03	445.9	3,040.0	3,070.8	0.00	0.00	0.00
9,600.0	90.00	87.84	6,265.9	-1,600.02	449.6	3,140.0	3,170.5	0.00	0.00	0.00
9,700.0	90.00	87.84	6,265.9	-1,600.02	453.4	3,239.9	3,270.2	0.00	0.00	0.00
9,800.0	90.00	87.84	6,265.9	-1,600.02	457.2	3,339.8	3,370.0	0.00	0.00	0.00
9,900.0	90.00	87.84	6,265.9	-1,600.02	460.9	3,439.7	3,469.7	0.00	0.00	0.00
10,000.0	90.00	87.84	6,265.9	-1,600.02	464.7	3,539.7	3,569.4	0.00	0.00	0.00
10,100.0	90.00	87.84	6,265.9	-1,600.02	468.5	3,639.6	3,669.1	0.00	0.00	0.00
10,200.0	90.00	87.84	6,265.9	-1,600.01	472.3	3,739.5	3,768.9	0.00	0.00	0.00
10,300.0	90.00	87.83	6,265.9	-1,600.01	476.1	3,839.5	3,868.6	0.00	0.00	0.00
10,400.0	90.00	87.83	6,265.9	-1,600.01	479.8	3,939.4	3,968.3	0.00	0.00	0.00
10,500.0	90.00	87.83	6,265.9	-1,600.01	483.6	4,039.3	4,068.0	0.00	0.00	0.00
10,600.0	90.00	87.83	6,265.9	-1,600.01	487.4	4,139.2	4,167.8	0.00	0.00	0.00
10,700.0	90.00	87.83	6,265.9	-1,600.00	491.2	4,239.2	4,267.5	0.00	0.00	0.00
10,800.0	90.00	87.83	6,265.9	-1,600.00	495.0	4,339.1	4,367.2	0.00	0.00	0.00
10,900.0	90.00	87.83	6,265.9	-1,600.00	498.8	4,439.0	4,467.0	0.00	0.00	0.00
BHL (P2) - STATE ANTELOPE B11-V41-2HNC										
10,920.3	90.00	87.83	6,265.9	-1,600.00	499.5	4,459.3	4,487.2	0.00	0.00	0.00

Plan Annotations					
MD (usft)	TVD (usft)	Local Coordinates		Comment	
		+N/-S (usft)	+E/-W (usft)		
1,200.0	1,200.0	0.0	0.0	START NUDGE (2°/100ft BUR)	
1,542.0	1,541.2	12.9	-15.8	EOB TO 6.84° INC	
5,419.9	5,391.5	304.3	-374.0	END OF TANGENT	
5,761.8	5,732.6	317.2	-389.8	EOD TO VERTICAL	
5,791.8	5,762.6	317.2	-389.8	KOP (12°/100ft BUR)	
6,416.8	6,223.8	330.4	-36.2	START OF TANGENT	
6,516.8	6,249.7	334.0	60.4	END OF TANGENT	
6,641.8	6,265.9	338.6	183.9	7" ICP (P2) *NEW* - STATE ANTELOPE B11-V41-2HNC	
10,920.3	6,265.9	499.5	4,459.3	BHL (P2) - STATE ANTELOPE B11-V41-2HNC	