



# Kerr-McGee Oil & Gas Onshore LP

A subsidiary of Anadarko Petroleum Corporation

1099 18<sup>th</sup> Street  
Denver, CO 80202  
720-929-6000

November 20, 2014

Department of Natural Resources  
Oil and Gas Conservation Commission  
The Chancery Building  
1120 Lincoln St., Suite 801  
Denver, CO 80203

Re: **30 Day Certification Letter - 318A.e**  
MILK STATE 29N-21HZ  
Township 3 North, Range 65 West, Section 21: SE/4SW/4  
Unit Acreage: 480  
Unit Spacing: 03N-65W-16 S/2SW/4  
03N-65W-21 W/2  
03N-65W-28 N/2NW/4  
Weld County, Colorado

Ladies/Gentlemen:

Kerr-McGee Oil and Gas Onshore LP (“KMG”) hereby certifies to the Director that a thirty (30) day notice has been given by certified mail to all owners in the proposed wellbore spacing unit. We have not received any objections to such well location, proposed spacing unit, or additional producing formation. KMG hereby requests the Director to approve the boundary well.

If you have any questions or issues regarding this permit, please contact Cheryl Light at (720) 929-6461.

Very truly yours,

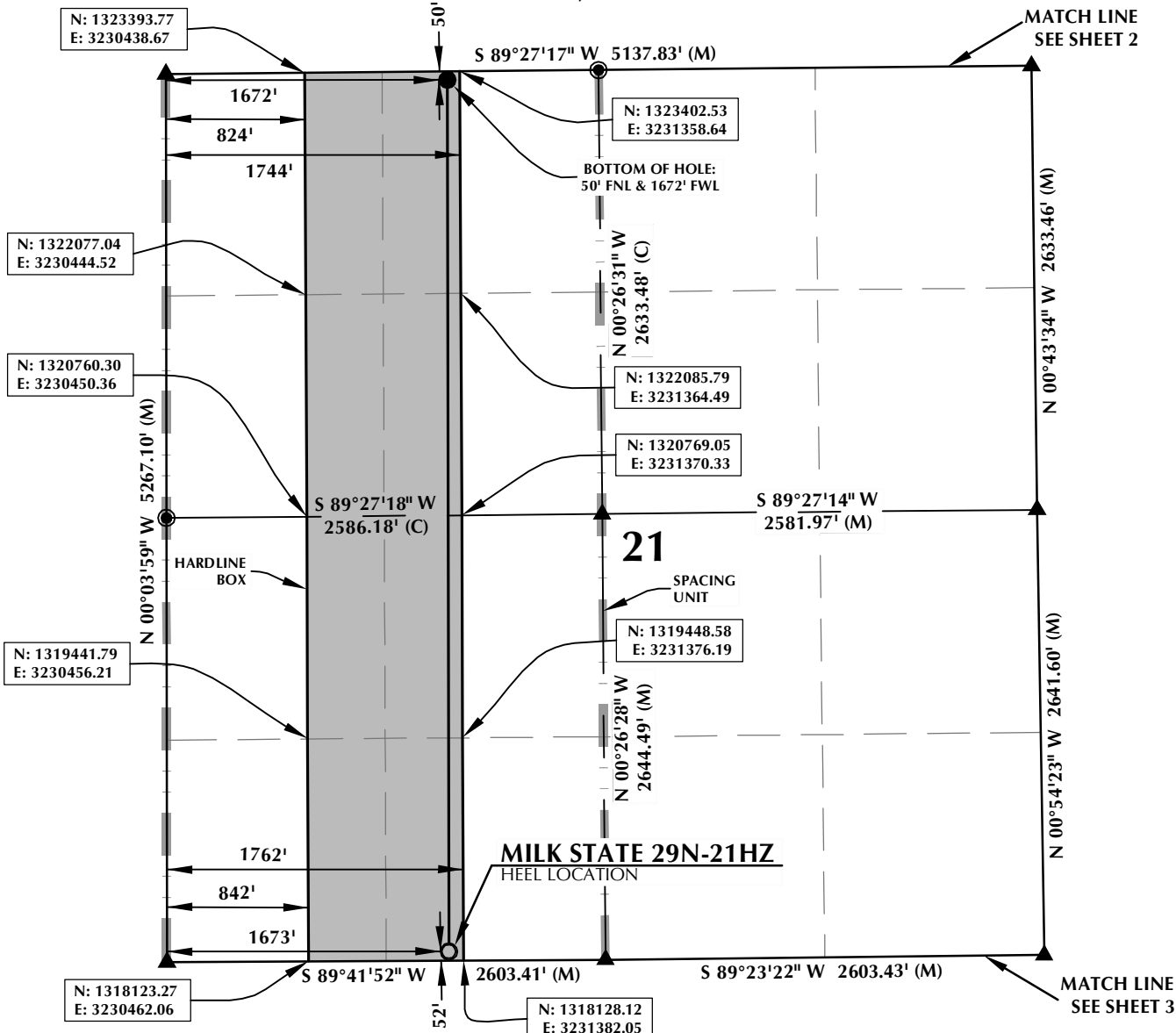
**Kerr-McGee Oil and Gas Onshore LP**

A handwritten signature in black ink, appearing to read 'Mike McConaughy'.

**Mike McConaughy**  
**Sr. Regulatory Analyst**

Enclosure

# SPACING UNIT: MILK STATE 29N-21HZ T3N, R65W



**HEEL LOCATION**  
NAD 83  
N: 1,318,179.65'  
E: 3,231,293.30'

**BOTTOM HOLE LOCATION**  
NAD 83  
N: 1,323,351.84'  
E: 3,231,286.30'

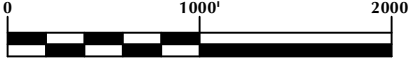
LATITUDE= 40.203836°  
LONGITUDE= -104.671918°

LATITUDE= 40.218033°  
LONGITUDE= -104.671770°

LATITUDE= 40°12'13.808"  
LONGITUDE= -104°40'18.906"

LATITUDE= 40°13'04.920"  
LONGITUDE= -104°40'18.373"

**AVAILABLE FOOTAGE**  
6995'



**NOTES:**

1. ▲ INDICATES FOUND SECTION CORNER
2. ● INDICATES CALCULATED CORNER
3. BASIS OF BEARING DERIVED FROM COLORADO COORDINATE SYSTEM 1983 NORTH ZONE UNLESS OTHERWISE NOTED.
4. DRAWING NORTHING / EASTING COORDINATES ARE BASED ON COLORADO COORDINATE SYSTEM 1983 NORTH ZONE UNLESS OTHERWISE NOTED.
5. COMBINED SCALE FACTOR: .99972948
6. THIS EXHIBIT DOES NOT REPRESENT A LAND SURVEY PLAT OR IMPROVEMENT SURVEY PLAT AS DEFINED BY C.R.S. 38-51-102 AND CANNOT BE RELIED UPON TO DETERMINE OWNERSHIP.

**WELL PAD - MILK 14N-28HZ**

MILK STATE 29N-21HZ  
SPACING UNIT EXHIBIT  
52' FSL & 1673' FWL SESW (HEEL)  
50' FNL & 1672' FWL NENW (BOTTOM)  
LOCATED IN SECTION 21  
T3N, R65W, 6TH P.M.  
WELD COUNTY, COLORADO

**Kerr-McGee Oil &  
Gas Onshore L.P.**  
1099 18th Street  
Denver, Colorado 80202



**CONSULTING, LLC**

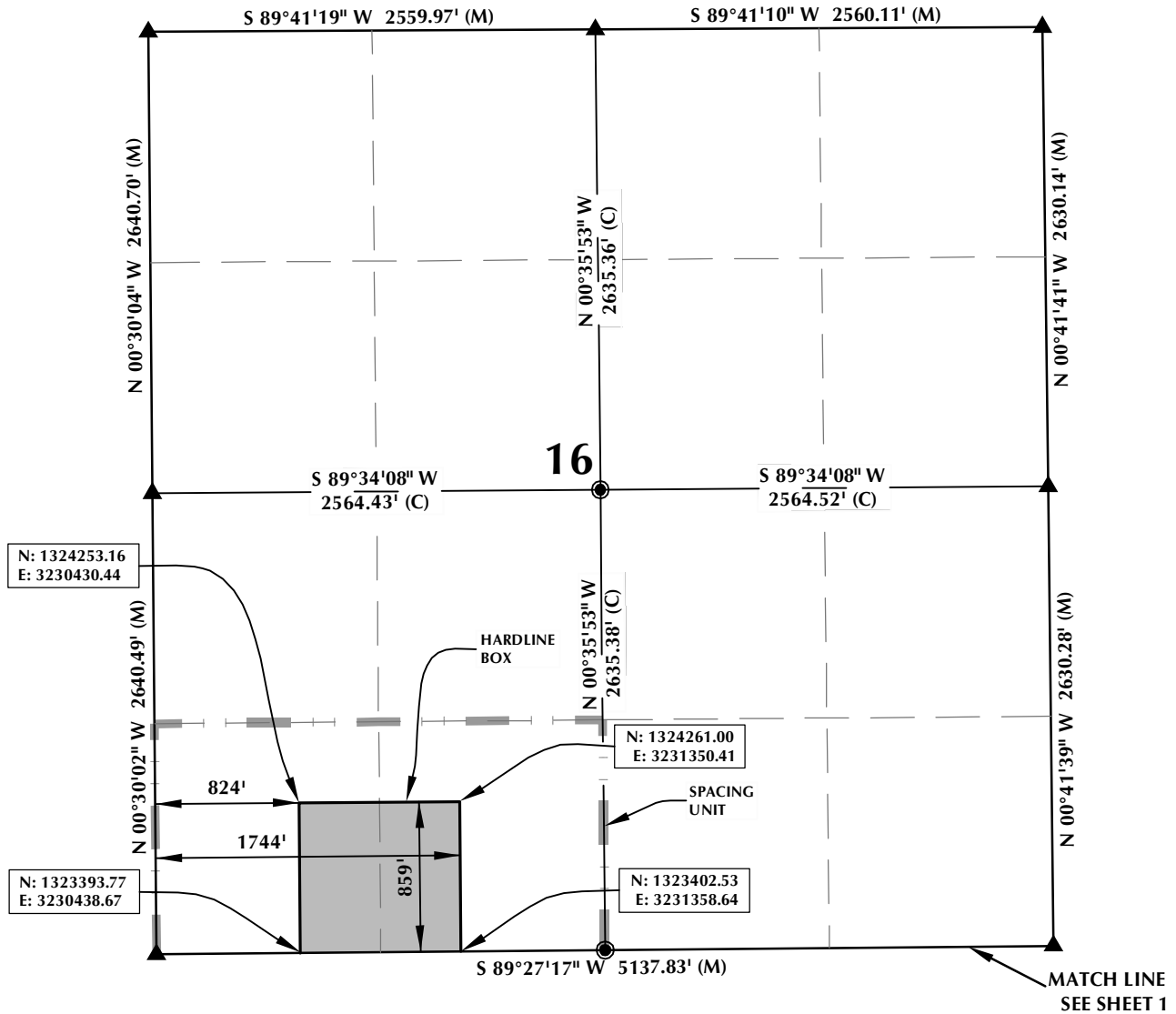
**SHERIDAN OFFICE**  
2155 North Main Street  
Sheridan, Wyoming 82801  
Phone 307-674-0609

**LOVELAND OFFICE**  
1635 Foxtrail Drive, Suite 204  
Loveland, Colorado 80538  
Phone 970-776-4331

DRAFTED BY:	LMO	CHECKED BY:	BJR	SHEET NO: <b>1</b> 1 OF 3
DATE DRAFTED:	8/8/14	DATE SURVEYED:	7/23/14	
REVISED:	10/31/14	FILE NAME:	14-46	

K:\ADARKO\2014\14\_46\_MOSER\_WELL-STAKING\_3N65W\PLATS\HARDLINE\MILK\_14N-28HZ\MILK STATE 29N-21HZ\ANG\_1028\2014\_9-4-15\1.A1.mxd

# SPACING UNIT: MILK STATE 29N-21HZ T3N, R65W



**HEEL LOCATION**  
NAD 83  
N: 1,318,179.65'  
E: 3,231,293.30'

LATITUDE= 40.203836°  
LONGITUDE= -104.671918°

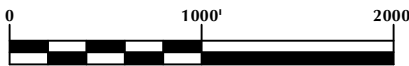
LATITUDE= 40°12'13.808"  
LONGITUDE= -104°40'18.906"

**AVAILABLE FOOTAGE**  
6995'

**BOTTOM HOLE LOCATION**  
NAD 83  
N: 1,323,351.84'  
E: 3,231,286.30'

LATITUDE= 40.218033°  
LONGITUDE= -104.671770°

LATITUDE= 40°13'04.920"  
LONGITUDE= -104°40'18.373"



**NOTES:**

1. ▲ INDICATES FOUND SECTION CORNER
2. ● INDICATES CALCULATED CORNER
3. BASIS OF BEARING DERIVED FROM COLORADO COORDINATE SYSTEM 1983 NORTH ZONE UNLESS OTHERWISE NOTED.
4. DRAWING NORTHING / EASTING COORDINATES ARE BASED ON COLORADO COORDINATE SYSTEM 1983 NORTH ZONE UNLESS OTHERWISE NOTED.
5. COMBINED SCALE FACTOR: .99972948
6. THIS EXHIBIT DOES NOT REPRESENT A LAND SURVEY PLAT OR IMPROVEMENT SURVEY PLAT AS DEFINED BY C.R.S. 38-51-102 AND CANNOT BE RELIED UPON TO DETERMINE OWNERSHIP.

**WELL PAD - MILK 14N-28HZ**

MILK STATE 29N-21HZ  
SPACING UNIT EXHIBIT  
52' FSL & 1673' FWL SESW (HEEL)  
50' FNL & 1672' FWL NENW (BOTTOM)  
LOCATED IN SECTION 21  
T3N, R65W, 6TH P.M.  
WELD COUNTY, COLORADO

**Kerr-McGee Oil &  
Gas Onshore L.P.**  
1099 18th Street  
Denver, Colorado 80202



**CONSULTING, LLC**

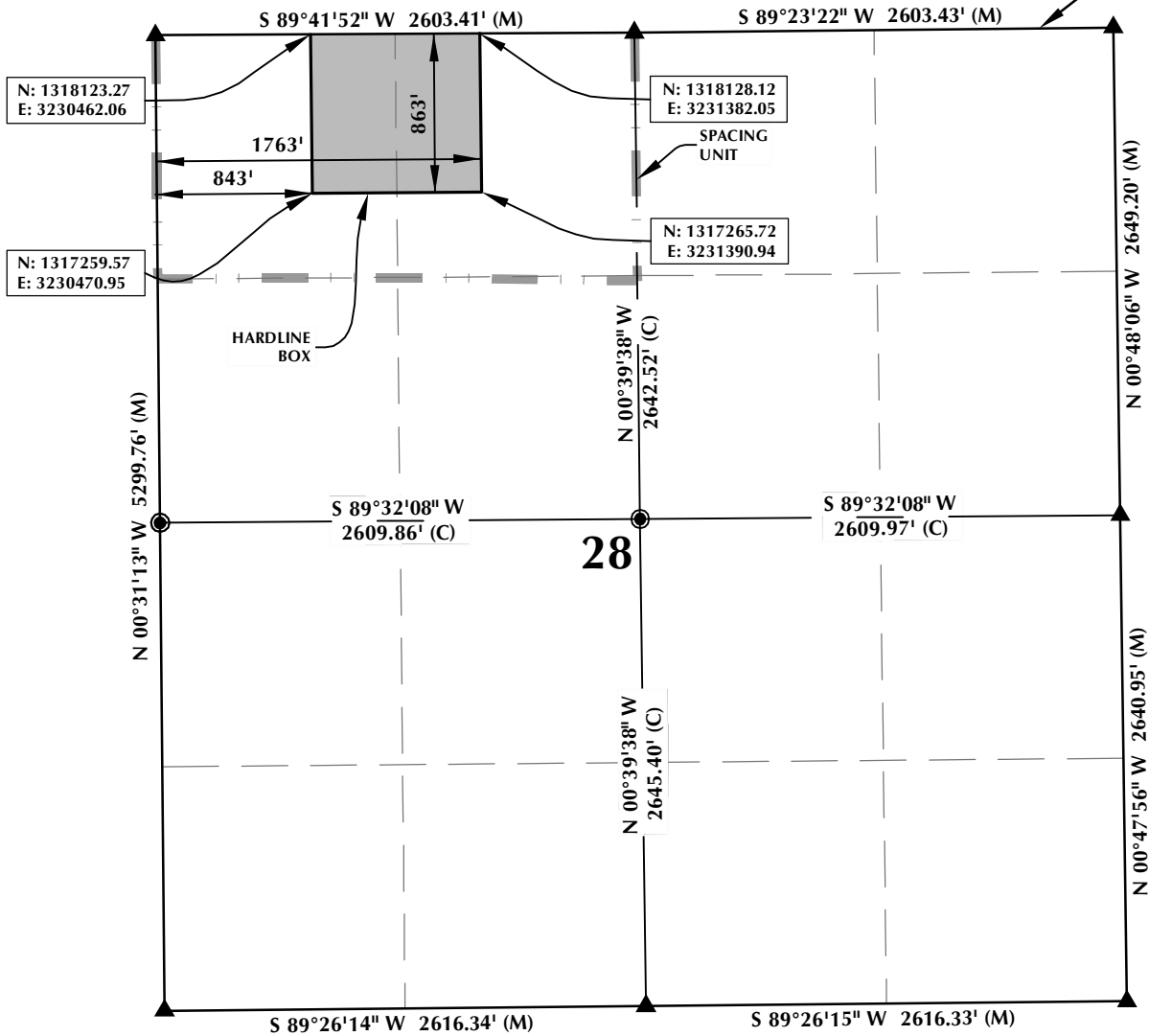
**SHERIDAN OFFICE**  
2155 North Main Street  
Sheridan, Wyoming 82801  
Phone 307-674-0609

**LOVELAND OFFICE**  
1635 Foxtrail Drive, Suite 204  
Loveland, Colorado 80538  
Phone 970-776-4331

DRAFTED BY: LMO	CHECKED BY: BJR	SHEET NO:
DATE DRAFTED: 8/8/14	DATE SURVEYED: 7/23/14	<b>2</b>
REVISED: 10/31/14	FILE NAME: 14-46	2 OF 3

# SPACING UNIT: MILK STATE 29N-21HZ T3N, R65W

MATCH LINE  
SEE SHEET 1



**HEEL LOCATION**

NAD 83  
N: 1,318,179.65'  
E: 3,231,293.30'

LATITUDE= 40.203836°  
LONGITUDE= -104.671918°

LATITUDE= 40°12'13.808"  
LONGITUDE= -104°40'18.906"

**AVAILABLE FOOTAGE**  
6995'

**BOTTOM HOLE LOCATION**

NAD 83  
N: 1,323,351.84'  
E: 3,231,286.30'

LATITUDE= 40.218033°  
LONGITUDE= -104.671770°

LATITUDE= 40°13'04.920"  
LONGITUDE= -104°40'18.373"



SCALE: 1" = 1000'

**NOTES:**

1. ▲ INDICATES FOUND SECTION CORNER
2. ● INDICATES CALCULATED CORNER
3. BASIS OF BEARING DERIVED FROM COLORADO COORDINATE SYSTEM 1983 NORTH ZONE UNLESS OTHERWISE NOTED.
4. DRAWING NORTHING / EASTING COORDINATES ARE BASED ON COLORADO COORDINATE SYSTEM 1983 NORTH ZONE UNLESS OTHERWISE NOTED.
5. COMBINED SCALE FACTOR: .99972948
6. THIS EXHIBIT DOES NOT REPRESENT A LAND SURVEY PLAT OR IMPROVEMENT SURVEY PLAT AS DEFINED BY C.R.S. 38-51-102 AND CANNOT BE RELIED UPON TO DETERMINE OWNERSHIP.

**WELL PAD - MILK 14N-28HZ**

MILK STATE 29N-21HZ  
SPACING UNIT EXHIBIT  
52' FSL & 1673' FWL SESW (HEEL)  
50' FNL & 1672' FWL NENW (BOTTOM)  
LOCATED IN SECTION 21  
T3N, R65W, 6TH P.M.  
WELD COUNTY, COLORADO

**Kerr-McGee Oil &  
Gas Onshore L.P.**  
1099 18th Street  
Denver, Colorado 80202



**CONSULTING, LLC**

SHERIDAN OFFICE    LOVELAND OFFICE  
2155 North Main Street    1635 Foxtrail Drive, Suite 204  
Sheridan, Wyoming 82801    Loveland, Colorado 80538  
Phone 307-674-0609    Phone 970-776-4331

DRAFTED BY:	LMO	CHECKED BY:	BJR	<b>SHEET NO:</b> <b>3</b> 3 OF 3
DATE DRAFTED:	8/8/14	DATE SURVEYED:	7/23/14	
REVISED:	10/31/14	FILE NAME:	14-46	