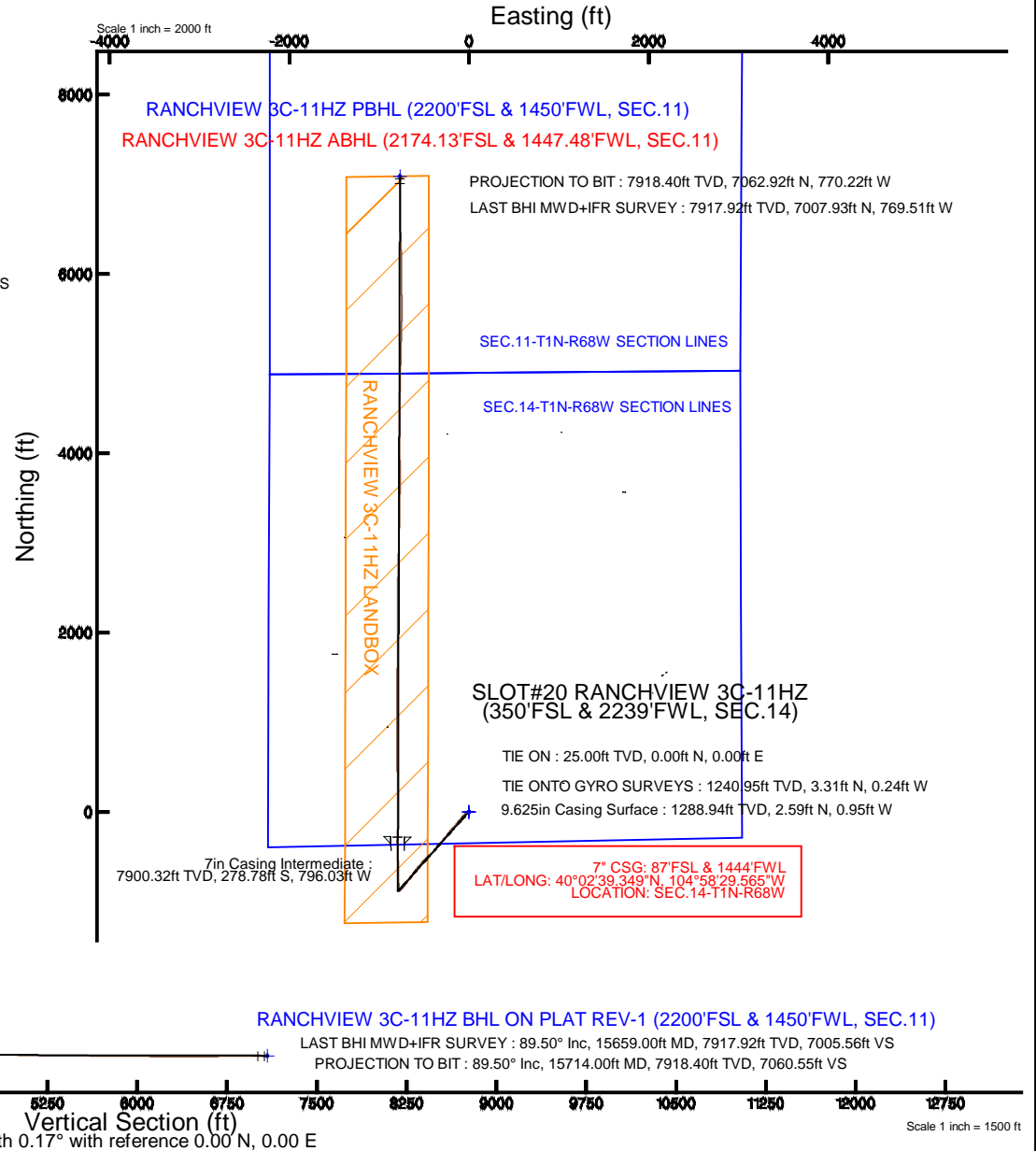
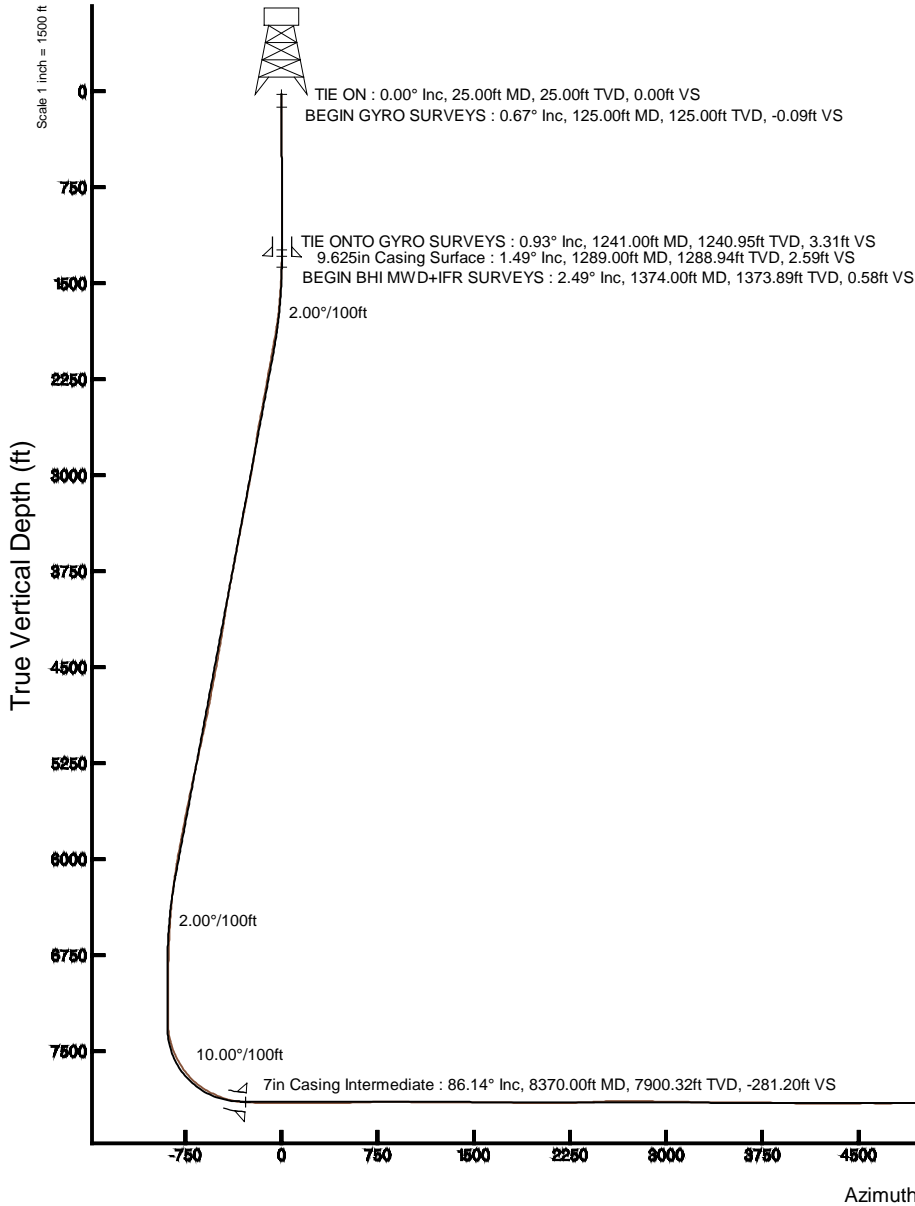


KERR-MCGEE OIL & GAS ONSHORE LP

Location: COLORADO Slot: SLOT#20 RANCHVIEW 3C-11HZ (350'FSL & 2239'FWL, SEC.14)
 Field: WELD COUNTY (KERR MCGEE) Well: RANCHVIEW 3C-11HZ
 Facility: SEC.14-T1N-R68W Wellbore: RANCHVIEW 3C-11HZ PWB

Plot reference wellpath is RANCHVIEW 3C-11HZ (REV-A.0) PWP

True vertical depths are referenced to H&P 307 (25KB) (RKB)	Grid System: NAD83 / Lambert Colorado SP, Northern Zone (501), US feet
Measured depths are referenced to H&P 307 (25KB) (RKB)	North Reference: True north
H&P 307 (25KB) (RKB) to Mean Sea Level: 5169 feet	Scale: True distance
Mean Sea Level to Mud line (At Slot: SLOT#20 RANCHVIEW 3C-11HZ (350'FSL & 2239'FWL, SEC.14)): 0 feet	Depths are in feet
Coordinates are in feet referenced to Slot	Created by: robiale01 on 10/31/2014



Scale 1 inch = 1500 ft

REFERENCE WELLPATH IDENTIFICATION			
Operator	KERR-MCGEE OIL & GAS ONSHORE LP	Slot	SLOT#20 RANCHVIEW 3C-11HZ (350'FSL & 2239'FWL, SEC.14)
Area	COLORADO	Well	RANCHVIEW 3C-11HZ
Field	WELD COUNTY (KERR MCGEE)	Wellbore	RANCHVIEW 3C-11HZ AWP
Facility	SEC.14-T1N-R68W		

REPORT SETUP INFORMATION			
Projection System	NAD83 / Lambert Colorado SP, Northern Zone (501), US feet	Software System	WellArchitect® 4.0.0
North Reference	True	User	Robiale01
Scale	0.999963	Report Generated	10/30/2014 at 4:41:57 PM
Convergence at slot	n/a	Database/Source file	WellArchitectDB/RANCHVIEW_3C-11HZ_AWP.xml

WELLPATH LOCATION						
	Local coordinates		Grid coordinates		Geographic coordinates	
	North[ft]	East[ft]	Easting[US ft]	Northing[US ft]	Latitude	Longitude
Slot Location	-1557.65	-2201.26	3147812.44	1259689.75	40°02'42.104"N	104°58'19.330"W
Facility Reference Pt			3150004.17	1261260.61	40°02'57.498"N	104°57'51.026"W
Field Reference Pt			3197771.84	1268891.29	40°04'09.600"N	104°47'36.000"W

WELLPATH DATUM			
Calculation method	Minimum curvature	H&P 307 (25'KB) (RKB) to Facility Vertical Datum	5169.00ft
Horizontal Reference Pt	Slot	H&P 307 (25'KB) (RKB) to Mean Sea Level	5169.00ft
Vertical Reference Pt	H&P 307 (25'KB) (RKB)	H&P 307 (25'KB) (RKB) to Mud Line at Slot (SLOT#20 RANCHVIEW 3C-11HZ (350'FSL & 2239'FWL, SEC.14))	5169.00ft
MD Reference Pt	H&P 307 (25'KB) (RKB)	Section Origin	N 0.00, E 0.00 ft
Field Vertical Reference	Mean Sea Level	Section Azimuth	353.78°

REFERENCE WELLPATH IDENTIFICATION

Operator	KERR-MCGEE OIL & GAS ONSHORE LP	Slot	SLOT#20 RANCHVIEW 3C-11HZ (350'FSL & 2239'FWL, SEC.14)
Area	COLORADO	Well	RANCHVIEW 3C-11HZ
Field	WELD COUNTY (KERR MCGEE)	Wellbore	RANCHVIEW 3C-11HZ AWP
Facility	SEC.14-T1N-R68W		

WELLPATH DATA (180 stations) † = interpolated/extrapolated station

MD [ft]	Inclination [°]	Azimuth [°]	TVD [ft]	Vert Sect [ft]	North [ft]	East [ft]	Latitude	Longitude	DLS [°/100ft]	Comments
0.00†	0.000	99.260	0.00	0.00	0.00	0.00	40°02'42.104"N	104°58'19.330"W	0.00	
25.00	0.000	99.260	25.00	0.00	0.00	0.00	40°02'42.104"N	104°58'19.330"W	0.00	TIE ON
125.00	0.670	99.260	125.00	-0.16	-0.09	0.58	40°02'42.103"N	104°58'19.323"W	0.67	BEGIN GYRO SURVEYS
225.00	0.560	62.430	224.99	-0.13	0.04	1.59	40°02'42.104"N	104°58'19.310"W	0.40	
325.00	0.760	61.050	324.99	0.30	0.59	2.60	40°02'42.110"N	104°58'19.297"W	0.20	
425.00	0.150	17.880	424.98	0.68	1.03	3.22	40°02'42.114"N	104°58'19.289"W	0.66	
525.00	0.710	5.690	524.98	1.40	1.77	3.32	40°02'42.122"N	104°58'19.287"W	0.56	
625.00	0.810	331.700	624.97	2.66	3.01	3.05	40°02'42.134"N	104°58'19.291"W	0.45	
725.00	0.400	305.380	724.97	3.55	3.84	2.43	40°02'42.142"N	104°58'19.299"W	0.49	
825.00	0.370	286.860	824.96	3.91	4.13	1.84	40°02'42.145"N	104°58'19.306"W	0.13	
925.00	0.530	279.420	924.96	4.16	4.30	1.07	40°02'42.146"N	104°58'19.316"W	0.17	
1025.00	0.360	190.160	1024.96	3.98	4.07	0.56	40°02'42.144"N	104°58'19.323"W	0.64	
1125.00	0.040	14.910	1124.96	3.71	3.79	0.51	40°02'42.141"N	104°58'19.323"W	0.40	
1225.00	0.780	238.260	1224.95	3.45	3.47	-0.06	40°02'42.138"N	104°58'19.331"W	0.81	
1241.00	0.930	222.010	1240.95	3.32	3.31	-0.24	40°02'42.137"N	104°58'19.333"W	1.77	TIE ONTO GYRO SURVEYS
1374.00	2.490	228.440	1373.89	0.93	0.59	-3.12	40°02'42.110"N	104°58'19.370"W	1.18	BEGIN BHI MWD+IFR SURVEYS
1466.00	5.060	236.410	1465.68	-2.09	-2.98	-8.00	40°02'42.075"N	104°58'19.433"W	2.84	
1558.00	7.530	238.520	1557.12	-6.53	-8.37	-16.52	40°02'42.021"N	104°58'19.542"W	2.70	
1650.00	9.470	236.450	1648.11	-12.58	-15.70	-27.97	40°02'41.949"N	104°58'19.690"W	2.13	
1742.00	11.000	235.950	1738.64	-20.15	-24.80	-41.55	40°02'41.859"N	104°58'19.864"W	1.67	
1834.00	12.250	224.960	1828.76	-30.37	-36.62	-55.72	40°02'41.742"N	104°58'20.046"W	2.76	
1926.00	13.570	222.020	1918.43	-43.67	-51.55	-69.84	40°02'41.595"N	104°58'20.228"W	1.60	
2018.00	12.200	219.880	2008.12	-57.60	-67.03	-83.30	40°02'41.442"N	104°58'20.401"W	1.58	
2109.00	13.700	219.790	2096.80	-71.75	-82.69	-96.36	40°02'41.287"N	104°58'20.569"W	1.65	
2201.00	13.130	218.850	2186.29	-86.70	-99.20	-109.89	40°02'41.124"N	104°58'20.743"W	0.66	
2294.00	12.250	217.890	2277.02	-101.24	-115.21	-122.58	40°02'40.965"N	104°58'20.906"W	0.97	
2387.00	12.880	218.070	2367.79	-115.74	-131.16	-135.03	40°02'40.808"N	104°58'21.066"W	0.68	
2480.00	13.670	220.480	2458.30	-130.70	-147.67	-148.55	40°02'40.645"N	104°58'21.240"W	1.04	
2572.00	14.450	220.630	2547.55	-146.01	-164.66	-163.09	40°02'40.477"N	104°58'21.427"W	0.85	
2761.00	11.370	223.970	2731.75	-174.07	-195.97	-191.38	40°02'40.167"N	104°58'21.791"W	1.68	
2855.00	11.100	219.500	2823.95	-186.31	-209.62	-203.57	40°02'40.032"N	104°58'21.948"W	0.97	
2950.00	12.110	218.860	2917.01	-199.74	-224.44	-215.64	40°02'39.886"N	104°58'22.103"W	1.07	
3044.00	12.380	213.890	3008.87	-214.40	-240.48	-227.45	40°02'39.728"N	104°58'22.254"W	1.16	
3138.00	13.550	218.860	3100.48	-229.89	-257.42	-239.97	40°02'39.560"N	104°58'22.416"W	1.72	
3232.00	14.000	219.710	3191.77	-245.57	-274.74	-254.15	40°02'39.389"N	104°58'22.598"W	0.52	
3326.00	14.140	220.540	3282.95	-261.34	-292.21	-268.88	40°02'39.216"N	104°58'22.787"W	0.26	
3421.00	14.990	222.840	3374.90	-277.34	-310.04	-284.77	40°02'39.040"N	104°58'22.992"W	1.08	
3515.00	13.360	222.350	3466.03	-292.49	-326.98	-300.36	40°02'38.873"N	104°58'23.192"W	1.74	
3610.00	14.670	219.530	3558.21	-308.15	-344.37	-315.41	40°02'38.701"N	104°58'23.385"W	1.55	
3704.00	13.210	220.230	3649.43	-323.86	-361.75	-329.92	40°02'38.529"N	104°58'23.572"W	1.56	
3798.00	13.820	218.890	3740.83	-339.18	-378.69	-343.91	40°02'38.362"N	104°58'23.752"W	0.73	
3892.00	13.300	216.450	3832.21	-355.05	-396.13	-357.38	40°02'38.189"N	104°58'23.925"W	0.82	
3987.00	12.430	218.230	3924.83	-370.38	-412.95	-370.20	40°02'38.023"N	104°58'24.090"W	1.01	
4081.00	12.070	220.160	4016.69	-384.38	-428.41	-382.80	40°02'37.870"N	104°58'24.252"W	0.58	
4175.00	11.650	223.760	4108.68	-397.27	-442.77	-395.70	40°02'37.728"N	104°58'24.418"W	0.90	

REFERENCE WELLPATH IDENTIFICATION

Operator	KERR-MCGEE OIL & GAS ONSHORE LP	Slot	SLOT#20 RANCHVIEW 3C-11HZ (350'FSL & 2239'FWL, SEC.14)
Area	COLORADO	Well	RANCHVIEW 3C-11HZ
Field	WELD COUNTY (KERR MCGEE)	Wellbore	RANCHVIEW 3C-11HZ AWP
Facility	SEC.14-T1N-R68W		

WELLPATH DATA (180 stations)

MD [ft]	Inclination [°]	Azimuth [°]	TVD [ft]	Vert Sect [ft]	North [ft]	East [ft]	Latitude	Longitude	DLS [°/100ft]	Comments
4270.00	13.070	226.120	4201.48	-410.00	-457.15	-410.08	40°02'37.586"N	104°58'24.603"W	1.59	
4364.00	13.160	226.440	4293.02	-422.98	-471.89	-425.49	40°02'37.441"N	104°58'24.801"W	0.12	
4459.00	13.970	227.200	4385.37	-436.37	-487.13	-441.74	40°02'37.290"N	104°58'25.010"W	0.87	
4553.00	15.600	225.210	4476.26	-451.02	-503.75	-459.04	40°02'37.126"N	104°58'25.232"W	1.82	
4647.00	14.620	225.820	4567.01	-466.19	-520.92	-476.52	40°02'36.956"N	104°58'25.457"W	1.06	
4742.00	15.190	223.400	4658.81	-481.63	-538.32	-493.67	40°02'36.784"N	104°58'25.677"W	0.89	
4836.00	13.500	222.110	4749.88	-496.90	-555.41	-509.49	40°02'36.615"N	104°58'25.881"W	1.83	
4930.00	14.830	222.920	4841.02	-512.07	-572.36	-525.04	40°02'36.448"N	104°58'26.081"W	1.43	
5024.00	16.610	222.400	4931.50	-528.82	-591.09	-542.29	40°02'36.263"N	104°58'26.303"W	1.90	
5118.00	15.630	222.000	5021.80	-546.14	-610.42	-559.82	40°02'36.072"N	104°58'26.528"W	1.05	
5213.00	15.070	216.150	5113.42	-563.79	-629.91	-575.67	40°02'35.879"N	104°58'26.732"W	1.73	
5308.00	15.750	216.090	5205.00	-582.44	-650.30	-590.55	40°02'35.678"N	104°58'26.923"W	0.72	
5402.00	14.260	215.560	5295.80	-600.51	-670.03	-604.80	40°02'35.483"N	104°58'27.106"W	1.59	
5496.00	15.200	215.760	5386.70	-618.31	-689.45	-618.74	40°02'35.291"N	104°58'27.286"W	1.00	
5590.00	14.570	217.060	5477.55	-636.07	-708.88	-633.06	40°02'35.099"N	104°58'27.470"W	0.76	
5685.00	14.280	215.800	5569.56	-653.48	-727.92	-647.12	40°02'34.910"N	104°58'27.650"W	0.45	
5780.00	13.930	217.310	5661.69	-670.47	-746.52	-660.90	40°02'34.727"N	104°58'27.828"W	0.53	
5874.00	13.950	221.860	5752.93	-686.24	-763.95	-675.32	40°02'34.554"N	104°58'28.013"W	1.17	
5969.00	13.140	222.690	5845.28	-700.99	-780.42	-690.29	40°02'34.392"N	104°58'28.205"W	0.88	
6063.00	14.160	217.440	5936.63	-716.33	-797.40	-704.52	40°02'34.224"N	104°58'28.388"W	1.71	
6158.00	11.760	216.340	6029.20	-731.87	-814.43	-717.32	40°02'34.055"N	104°58'28.553"W	2.54	
6253.00	9.400	213.860	6122.58	-744.94	-828.67	-727.38	40°02'33.915"N	104°58'28.682"W	2.53	
6347.00	8.730	214.670	6215.41	-756.20	-840.92	-735.72	40°02'33.794"N	104°58'28.790"W	0.73	
6442.00	8.290	222.850	6309.37	-766.14	-851.87	-744.48	40°02'33.686"N	104°58'28.902"W	1.35	
6536.00	6.020	223.990	6402.63	-773.73	-860.38	-752.51	40°02'33.601"N	104°58'29.006"W	2.42	
6630.00	4.870	221.420	6496.20	-779.57	-866.92	-758.57	40°02'33.537"N	104°58'29.083"W	1.25	
6724.00	4.180	229.550	6589.91	-784.19	-872.14	-763.82	40°02'33.485"N	104°58'29.151"W	1.00	
6819.00	3.690	232.330	6684.68	-787.73	-876.25	-768.88	40°02'33.445"N	104°58'29.216"W	0.55	
6913.00	2.540	242.100	6778.55	-790.08	-879.07	-773.11	40°02'33.417"N	104°58'29.270"W	1.34	
7008.00	1.930	248.300	6873.47	-791.28	-880.65	-776.46	40°02'33.401"N	104°58'29.313"W	0.69	
7102.00	1.880	248.960	6967.42	-792.10	-881.79	-779.37	40°02'33.390"N	104°58'29.351"W	0.06	
7197.00	1.430	221.610	7062.38	-793.30	-883.23	-781.61	40°02'33.376"N	104°58'29.380"W	0.94	
7291.00	0.370	176.990	7156.37	-794.39	-884.41	-782.37	40°02'33.364"N	104°58'29.389"W	1.27	
7386.00	0.590	327.840	7251.37	-794.25	-884.31	-782.62	40°02'33.365"N	104°58'29.393"W	0.98	
7433.00	3.490	2.540	7298.33	-792.62	-882.67	-782.68	40°02'33.381"N	104°58'29.393"W	6.43	
7481.00	7.480	8.600	7346.11	-788.15	-878.12	-782.15	40°02'33.426"N	104°58'29.387"W	8.39	
7528.00	10.690	5.030	7392.51	-780.92	-870.75	-781.31	40°02'33.499"N	104°58'29.376"W	6.93	
7575.00	14.970	0.780	7438.33	-770.61	-860.34	-780.85	40°02'33.602"N	104°58'29.370"W	9.32	
7622.00	19.970	359.550	7483.15	-756.59	-846.23	-780.83	40°02'33.741"N	104°58'29.370"W	10.67	
7670.00	24.490	357.430	7527.57	-738.50	-828.09	-781.34	40°02'33.921"N	104°58'29.376"W	9.56	
7717.00	28.310	356.170	7569.66	-717.64	-807.23	-782.52	40°02'34.127"N	104°58'29.391"W	8.21	
7764.00	31.790	355.880	7610.33	-694.12	-783.75	-784.15	40°02'34.359"N	104°58'29.412"W	7.41	
7811.00	35.370	356.640	7649.48	-668.16	-757.82	-785.84	40°02'34.615"N	104°58'29.434"W	7.67	
7858.00	39.630	359.160	7686.77	-639.63	-729.23	-786.86	40°02'34.897"N	104°58'29.447"W	9.63	
7905.00	45.720	359.740	7721.30	-607.95	-697.39	-787.15	40°02'35.212"N	104°58'29.451"W	12.98	

REFERENCE WELLPATH IDENTIFICATION			
Operator	KERR-MCGEE OIL & GAS ONSHORE LP	Slot	SLOT#20 RANCHVIEW 3C-11HZ (350'FSL & 2239'FWL, SEC.14)
Area	COLORADO	Well	RANCHVIEW 3C-11HZ
Field	WELD COUNTY (KERR MCGEE)	Wellbore	RANCHVIEW 3C-11HZ AWP
Facility	SEC.14-T1N-R68W		

WELLPATH DATA (180 stations) † = interpolated/extrapolated station										
MD [ft]	Inclination [°]	Azimuth [°]	TVD [ft]	Vert Sect [ft]	North [ft]	East [ft]	Latitude	Longitude	DLS [°/100ft]	Comments
7953.00	51.350	359.140	7753.08	-572.17	-661.44	-787.51	40°02'35.567"N	104°58'29.456"W	11.77	
8000.00	55.440	359.020	7781.10	-534.61	-623.72	-788.12	40°02'35.940"N	104°58'29.463"W	8.70	
8048.00	59.820	358.780	7806.79	-494.24	-583.20	-788.90	40°02'36.341"N	104°58'29.474"W	9.13	
8095.00	63.100	358.420	7829.24	-453.10	-541.93	-789.91	40°02'36.748"N	104°58'29.487"W	7.01	
8142.00	65.910	358.690	7849.47	-410.83	-499.52	-790.98	40°02'37.167"N	104°58'29.500"W	6.00	
8189.00	70.250	358.360	7867.01	-367.39	-455.94	-792.10	40°02'37.598"N	104°58'29.515"W	9.26	
8236.00	75.330	357.160	7880.91	-322.61	-411.10	-793.86	40°02'38.041"N	104°58'29.537"W	11.08	
8283.00	80.560	357.690	7890.72	-276.76	-365.20	-795.93	40°02'38.495"N	104°58'29.564"W	11.18	
8333.00	84.400	0.620	7897.27	-227.42	-315.65	-796.65	40°02'38.985"N	104°58'29.573"W	9.63	
8370.00†	86.137	1.315	7900.32	-190.84	-278.78	-796.03	40°02'39.349"N	104°58'29.565"W	5.05	7" CASING POINT
8382.00	86.700	1.540	7901.07	-178.97	-266.81	-795.73	40°02'39.467"N	104°58'29.561"W	5.05	
8473.00	87.990	1.520	7905.28	-88.90	-175.94	-793.30	40°02'40.365"N	104°58'29.530"W	1.42	
8565.00	89.320	0.560	7907.44	2.33	-83.98	-791.63	40°02'41.274"N	104°58'29.509"W	1.78	
8657.00	90.550	0.870	7907.55	93.66	8.01	-790.49	40°02'42.183"N	104°58'29.494"W	1.38	
8749.00	90.060	359.840	7907.06	185.05	100.00	-789.92	40°02'43.092"N	104°58'29.487"W	1.24	
8841.00	89.960	359.500	7907.04	276.56	192.00	-790.45	40°02'44.001"N	104°58'29.494"W	0.39	
8932.00	90.490	358.880	7906.69	367.15	282.99	-791.73	40°02'44.900"N	104°58'29.510"W	0.90	
9025.00	90.520	358.240	7905.87	459.82	375.96	-794.07	40°02'45.819"N	104°58'29.540"W	0.69	
9118.00	90.180	357.750	7905.30	552.57	468.90	-797.32	40°02'46.738"N	104°58'29.582"W	0.64	
9211.00	92.000	359.500	7903.53	645.21	561.85	-799.55	40°02'47.656"N	104°58'29.611"W	2.71	
9304.00	92.030	0.690	7900.26	737.59	654.79	-799.40	40°02'48.575"N	104°58'29.609"W	1.28	
9397.00	91.440	0.760	7897.44	829.86	747.74	-798.22	40°02'49.493"N	104°58'29.594"W	0.64	
9490.00	90.400	359.940	7895.95	922.24	840.72	-797.66	40°02'50.412"N	104°58'29.587"W	1.42	
9584.00	88.150	358.680	7897.14	1015.79	934.70	-798.79	40°02'51.341"N	104°58'29.601"W	2.74	
9675.00	89.190	359.870	7899.25	1106.34	1025.66	-799.94	40°02'52.240"N	104°58'29.616"W	1.74	
9769.00	89.380	359.020	7900.42	1199.87	1119.65	-800.85	40°02'53.169"N	104°58'29.628"W	0.93	
9861.00	89.320	0.570	7901.47	1291.36	1211.64	-801.18	40°02'54.078"N	104°58'29.632"W	1.69	
9956.00	89.440	0.020	7902.50	1385.74	1306.63	-800.69	40°02'55.016"N	104°58'29.626"W	0.59	
10050.00	89.870	0.840	7903.06	1479.10	1400.63	-799.98	40°02'55.945"N	104°58'29.617"W	0.98	
10145.00	90.610	1.240	7902.66	1573.34	1495.61	-798.26	40°02'56.884"N	104°58'29.595"W	0.89	
10239.00	89.690	0.630	7902.42	1666.60	1589.60	-796.73	40°02'57.813"N	104°58'29.575"W	1.17	
10333.00	90.210	1.010	7902.50	1759.89	1683.59	-795.38	40°02'58.741"N	104°58'29.558"W	0.69	
10428.00	88.800	0.840	7903.32	1854.15	1778.57	-793.85	40°02'59.680"N	104°58'29.538"W	1.49	
10522.00	88.760	0.310	7905.32	1947.46	1872.54	-792.90	40°03'00.609"N	104°58'29.526"W	0.57	
10617.00	90.180	0.320	7906.20	2041.84	1967.53	-792.38	40°03'01.548"N	104°58'29.519"W	1.49	
10711.00	90.400	0.350	7905.73	2135.22	2061.53	-791.83	40°03'02.476"N	104°58'29.512"W	0.24	
10806.00	90.580	0.130	7904.91	2229.62	2156.53	-791.43	40°03'03.415"N	104°58'29.507"W	0.30	
10901.00	90.150	359.330	7904.31	2324.10	2251.52	-791.88	40°03'04.354"N	104°58'29.513"W	0.96	
10995.00	91.530	359.610	7902.93	2417.62	2345.51	-792.75	40°03'05.283"N	104°58'29.524"W	1.50	
11089.00	93.630	0.310	7898.70	2510.98	2439.41	-792.82	40°03'06.211"N	104°58'29.525"W	2.35	
11184.00	92.960	0.780	7893.24	2605.16	2534.24	-791.91	40°03'07.148"N	104°58'29.514"W	0.86	
11278.00	90.120	1.700	7890.71	2698.32	2628.18	-799.88	40°03'08.076"N	104°58'29.487"W	3.18	
11373.00	88.210	1.450	7892.10	2792.42	2723.13	-787.27	40°03'09.014"N	104°58'29.454"W	2.03	
11467.00	90.210	1.360	7893.39	2885.58	2817.08	-784.97	40°03'09.943"N	104°58'29.424"W	2.13	
11561.00	89.160	1.250	7893.91	2978.77	2911.06	-782.82	40°03'10.872"N	104°58'29.397"W	1.12	

REFERENCE WELLPATH IDENTIFICATION

Operator	KERR-MCGEE OIL & GAS ONSHORE LP	Slot	SLOT#20 RANCHVIEW 3C-11HZ (350'FSL & 2239'FWL, SEC.14)
Area	COLORADO	Well	RANCHVIEW 3C-11HZ
Field	WELD COUNTY (KERR MCGEE)	Wellbore	RANCHVIEW 3C-11HZ AWP
Facility	SEC.14-T1N-R68W		

WELLPATH DATA (180 stations)

MD [ft]	Inclination [°]	Azimuth [°]	TVD [ft]	Vert Sect [ft]	North [ft]	East [ft]	Latitude	Longitude	DLS [°/100ft]	Comments
11656.00	88.390	1.520	7895.94	3072.91	3006.01	-780.53	40°03'11.810"N	104°58'29.367"W	0.86	
11750.00	89.440	1.370	7897.72	3166.05	3099.96	-778.16	40°03'12.738"N	104°58'29.337"W	1.13	
11845.00	89.160	1.730	7898.88	3260.17	3194.92	-775.59	40°03'13.677"N	104°58'29.304"W	0.48	
11939.00	89.130	1.100	7900.28	3353.32	3288.88	-773.27	40°03'14.605"N	104°58'29.274"W	0.67	
12034.00	89.440	0.630	7901.47	3447.59	3383.86	-771.83	40°03'15.544"N	104°58'29.256"W	0.59	
12122.00	89.530	0.690	7902.26	3534.95	3471.85	-770.82	40°03'16.414"N	104°58'29.243"W	0.12	
12222.00	90.490	1.060	7902.24	3634.18	3571.84	-769.29	40°03'17.402"N	104°58'29.223"W	1.03	
12317.00	89.690	0.460	7902.09	3728.48	3666.83	-768.03	40°03'18.340"N	104°58'29.207"W	1.05	
12411.00	89.410	0.080	7902.83	3821.87	3760.82	-767.59	40°03'19.269"N	104°58'29.201"W	0.50	
12506.00	88.300	358.870	7904.73	3916.38	3855.80	-768.46	40°03'20.208"N	104°58'29.212"W	1.73	
12600.00	88.210	358.710	7907.59	4009.98	3949.73	-770.45	40°03'21.136"N	104°58'29.238"W	0.20	
12694.00	89.590	359.100	7909.40	4103.58	4043.69	-772.24	40°03'22.065"N	104°58'29.261"W	1.53	
12789.00	90.090	359.260	7909.66	4198.16	4138.68	-773.60	40°03'23.003"N	104°58'29.279"W	0.55	
12883.00	90.270	359.420	7909.37	4291.71	4232.68	-774.68	40°03'23.932"N	104°58'29.293"W	0.26	
12977.00	89.690	0.610	7909.40	4385.16	4326.68	-774.66	40°03'24.861"N	104°58'29.292"W	1.41	
13072.00	90.090	0.420	7909.58	4479.50	4421.67	-773.80	40°03'25.800"N	104°58'29.281"W	0.47	
13166.00	90.610	0.800	7909.01	4572.83	4515.66	-772.80	40°03'26.729"N	104°58'29.269"W	0.69	
13261.00	89.660	1.090	7908.78	4667.08	4610.65	-771.24	40°03'27.667"N	104°58'29.248"W	1.05	
13355.00	89.930	0.840	7909.12	4760.35	4704.64	-769.65	40°03'28.596"N	104°58'29.228"W	0.39	
13449.00	91.100	1.580	7908.28	4853.55	4798.61	-767.67	40°03'29.525"N	104°58'29.203"W	1.47	
13544.00	89.750	1.420	7907.57	4947.68	4893.57	-765.18	40°03'30.463"N	104°58'29.171"W	1.43	
13638.00	88.950	1.230	7908.64	5040.86	4987.54	-763.01	40°03'31.392"N	104°58'29.143"W	0.87	
13732.00	89.350	0.940	7910.03	5134.09	5081.51	-761.23	40°03'32.321"N	104°58'29.120"W	0.53	
13827.00	90.030	1.750	7910.55	5228.26	5176.48	-759.00	40°03'33.259"N	104°58'29.091"W	1.11	
13921.00	90.120	2.320	7910.42	5321.28	5270.42	-755.66	40°03'34.187"N	104°58'29.048"W	0.61	
14016.00	89.900	1.590	7910.41	5415.31	5365.37	-752.42	40°03'35.126"N	104°58'29.007"W	0.80	
14110.00	89.070	1.260	7911.25	5508.47	5459.33	-750.08	40°03'36.054"N	104°58'28.977"W	0.95	
14205.00	89.010	0.270	7912.84	5602.75	5554.31	-748.82	40°03'36.993"N	104°58'28.960"W	1.04	
14299.00	88.790	359.700	7914.65	5696.18	5648.29	-748.84	40°03'37.922"N	104°58'28.961"W	0.65	
14393.00	89.810	359.310	7915.80	5789.71	5742.28	-749.65	40°03'38.850"N	104°58'28.971"W	1.16	
14488.00	89.660	358.910	7916.23	5884.29	5837.27	-751.13	40°03'39.789"N	104°58'28.990"W	0.45	
14582.00	90.240	359.570	7916.32	5977.87	5931.26	-752.37	40°03'40.718"N	104°58'29.006"W	0.93	
14676.00	88.730	359.840	7917.16	6071.36	6025.25	-752.86	40°03'41.647"N	104°58'29.013"W	1.63	
14771.00	88.460	359.400	7919.49	6165.83	6120.22	-753.49	40°03'42.585"N	104°58'29.021"W	0.54	
14865.00	88.670	358.310	7921.84	6259.43	6214.17	-755.37	40°03'43.514"N	104°58'29.045"W	1.18	
14960.00	89.900	358.210	7923.03	6354.13	6309.12	-758.25	40°03'44.452"N	104°58'29.082"W	1.30	
15051.00	89.840	358.050	7923.24	6444.87	6400.07	-761.22	40°03'45.351"N	104°58'29.120"W	0.19	
15146.00	90.950	358.630	7922.58	6539.57	6495.02	-763.97	40°03'46.289"N	104°58'29.156"W	1.32	
15240.00	91.100	358.940	7920.90	6633.19	6588.99	-765.96	40°03'47.218"N	104°58'29.181"W	0.37	
15335.00	91.600	359.700	7918.66	6727.72	6683.95	-767.09	40°03'48.156"N	104°58'29.196"W	0.96	
15429.00	90.030	359.580	7917.33	6821.22	6777.94	-767.68	40°03'49.085"N	104°58'29.204"W	1.68	
15524.00	90.000	359.540	7917.30	6915.73	6872.94	-768.41	40°03'50.024"N	104°58'29.213"W	0.05	
15618.00	89.630	359.610	7917.60	7009.25	6966.93	-769.11	40°03'50.953"N	104°58'29.222"W	0.40	
15659.00	89.500	359.260	7917.92	7050.05	7007.93	-769.51	40°03'51.358"N	104°58'29.227"W	0.91	LAST BHI MWD+IFR SURVEY
15714.00	89.500	359.260	7918.40	7104.80	7062.92	-770.22	40°03'51.901"N	104°58'29.236"W	0.00	PROJECTION TO BIT

Actual Wellpath Report

RANCHVIEW 3C-11HZ AWP

Page 6 of 7

REFERENCE WELLPATH IDENTIFICATION			
Operator	KERR-MCGEE OIL & GAS ONSHORE LP	Slot	SLOT#20 RANCHVIEW 3C-11HZ (350'FSL & 2239'FWL, SEC.14)
Area	COLORADO	Well	RANCHVIEW 3C-11HZ
Field	WELD COUNTY (KERR MCGEE)	Wellbore	RANCHVIEW 3C-11HZ AWP
Facility	SEC.14-T1N-R68W		

HOLE & CASING SECTIONS - Ref Wellbore: RANCHVIEW 3C-11HZ AWP Ref Wellpath: RANCHVIEW 3C-11HZ AWP									
String/Diameter	Start MD [ft]	End MD [ft]	Interval [ft]	Start TVD [ft]	End TVD [ft]	Start N/S [ft]	Start E/W [ft]	End N/S [ft]	End E/W [ft]
13.5in Open Hole	25.00	1289.00	1264.00	25.00	1288.94	0.00	0.00	2.59	-0.95
9.625in Casing Surface	25.00	1289.00	1264.00	25.00	1288.94	0.00	0.00	2.59	-0.95
8.75in Open Hole	1289.00	8380.00	7091.00	1288.94	7900.95	2.59	-0.95	-268.80	-795.78
7in Casing Intermediate	25.00	8370.00	8345.00	25.00	7900.32	0.00	0.00	-278.78	-796.03
6.125in Open Hole	8380.00	15714.00	7334.00	7900.95	7918.40	-268.80	-795.78	7062.92	-770.22

WELLPATH COMPOSITION - Ref Wellbore: RANCHVIEW 3C-11HZ AWP Ref Wellpath: RANCHVIEW 3C-11HZ AWP				
Start MD [ft]	End MD [ft]	Positional Uncertainty Model	Log Name/Comment	Wellbore
25.00	1241.00	Generic gyro - continuous (Standard)	MS GYRO SURVEYS <125-1241>	RANCHVIEW 3C-11HZ AWP
1241.00	8333.00	NaviTrak (MAGCORR,IFR)	BHI NAVITRAK MWD+IFR 8 3/4" <1374-8333>	RANCHVIEW 3C-11HZ AWP
8333.00	15659.00	NaviTrak (MAGCORR,IFR)	BHI NAVITRAK MWD+IFR 6 1/8" <8382-15659>	RANCHVIEW 3C-11HZ AWP
15659.00	15714.00	Blind Drilling (std)	Projection to bit	RANCHVIEW 3C-11HZ AWP



Actual Wellpath Report

RANCHVIEW 3C-11HZ AWP

Page 7 of 7



REFERENCE WELLPATH IDENTIFICATION			
Operator	KERR-MCGEE OIL & GAS ONSHORE LP	Slot	SLOT#20 RANCHVIEW 3C-11HZ (350'FSL & 2239'FWL, SEC.14)
Area	COLORADO	Well	RANCHVIEW 3C-11HZ
Field	WELD COUNTY (KERR MCGEE)	Wellbore	RANCHVIEW 3C-11HZ AWP
Facility	SEC.14-T1N-R68W		

WELLPATH COMMENTS				
MD [ft]	Inclination [°]	Azimuth [°]	TVD [ft]	Comment
25.00	0.000	99.260	25.00	TIE ON
125.00	0.670	99.260	125.00	BEGIN GYRO SURVEYS
1241.00	0.930	222.010	1240.95	TIE ONTO GYRO SURVEYS
1374.00	2.490	228.440	1373.89	BEGIN BHI MWD+IFR SURVEYS
8370.00	86.137	1.315	7900.32	7" CASING POINT
15659.00	89.500	359.260	7917.92	LAST BHI MWD+IFR SURVEY
15714.00	89.500	359.260	7918.40	PROJECTION TO BIT