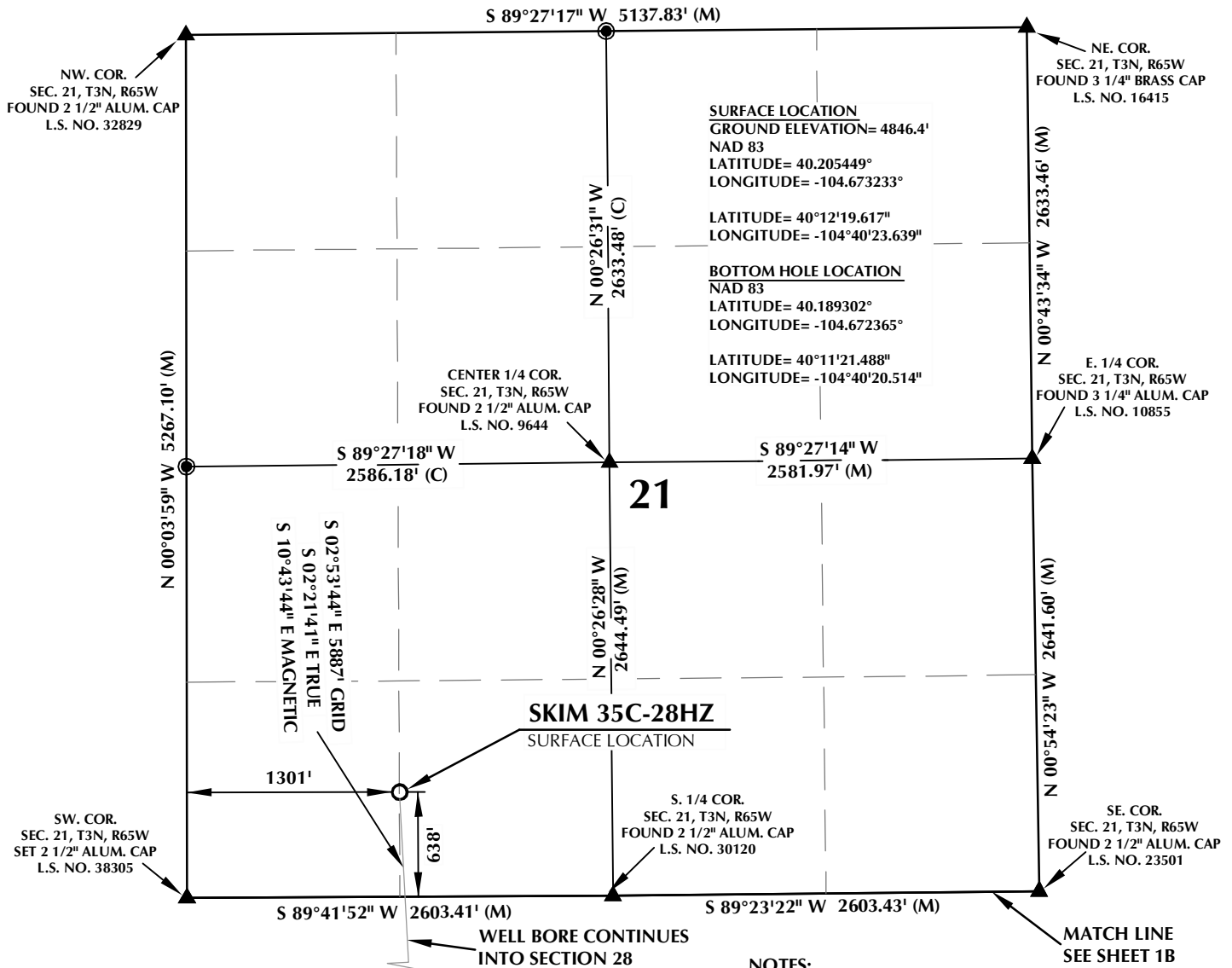


# T3N, R65W



**SURFACE LOCATION**  
 GROUND ELEVATION= 4846.4'  
 NAD 83  
 LATITUDE= 40.205449°  
 LONGITUDE= -104.673233°

LATITUDE= 40°12'19.617"  
 LONGITUDE= -104°40'23.639"

**BOTTOM HOLE LOCATION**  
 NAD 83  
 LATITUDE= 40.189302°  
 LONGITUDE= -104.672365°

LATITUDE= 40°11'21.488"  
 LONGITUDE= -104°40'20.514"

**21**

**SKIM 35C-28HZ**  
 SURFACE LOCATION

## CERTIFICATE OF SURVEYOR:

THIS IS TO CERTIFY THAT THE ABOVE PLAT WAS PREPARED FROM FIELD NOTES OF ACTUAL SURVEY MADE BY ME OR UNDER MY SUPERVISION AND THAT AT THE SAME TIME AND CORRECT TO THE BEST OF MY KNOWLEDGE AND BELIEF. THIS CERTIFICATE DOES NOT REPRESENT A LAND SURVEY PLAT OR IMPROVEMENT SURVEY PLAT AS DEFINED BY C.S. 38-51-102 AND CANNOT BE RELIED UPON TO DETERMINE OWNERSHIP.

*Benjamin J. Reenders*  
 BENJAMIN J. REENDERS  
 PROFESSIONAL LAND SURVEYOR  
 COLORADO REGISTRATION NUMBER 48323

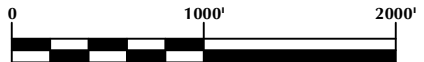
10/31/14

NOTICE: ACCORDING TO COLORADO STATE LAW YOU MUST COMMENCE ANY LEGAL ACTION BASED UPON ANY DEFECT IN THIS SURVEY WITHIN THREE YEARS AFTER YOU FIRST DISCOVER SUCH DEFECT. IN NO EVENT MAY ANY ACTION BASED UPON ANY DEFECT IN THIS SURVEY BE COMMENCED MORE THAN TEN YEARS FROM THE DATE ON THE CERTIFICATION SHOWN HEREON.

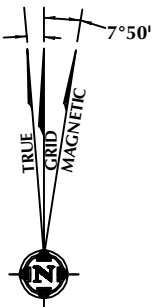
WELL BORE CONTINUES INTO SECTION 28

## NOTES:

- ▲ INDICATES FOUND SECTION CORNER
- INDICATES CALCULATED CORNER
- ELEVATION BASED ON NAVD88 (GEOID09)
- BASIS OF BEARING DERIVED FROM COLORADO COORDINATE SYSTEM 1983 NORTH ZONE UNLESS OTHERWISE NOTED.
- ALL MEASURED DISTANCES ARE GRID. COMBINED SCALE FACTOR: .99972948
- OPERATOR: ROB WILSON / PDOP = 1.4
- SEE ADDENDUM TO WELL LOCATION CERTIFICATE FOR EXISTING IMPROVEMENTS WITHIN 500' OF THE WELL PAD.
- WELL FOOTAGES ARE MEASURED AT RIGHT ANGLES TO THE SECTION LINES.
- THE BOTTOM OF HOLE BEARS S02°53'44"E 5887' FROM THE SURFACE LOCATION.



SCALE: 1" = 1000'



NOTE: MAGNETIC NORTH IS CURRENT AS OF 7/29/2014. MAGNETIC NORTH CHANGES WEST 0°08' PER YEAR.

## WELL PAD - SKIM STATE 4N-21HZ

SKIM 35C-28HZ  
 WELL LOCATION CERTIFICATE  
 638' FSL & 1301' FWL SESW (SURFACE)  
 LOCATED IN SECTION 21  
 50' FSL & 1550' FWL SESW (BOTTOM)  
 LOCATED IN SECTION 28  
 T3N, R65W, 6TH P.M.  
 WELD COUNTY, COLORADO

**Kerr-McGee Oil & Gas Onshore L.P.**  
 1099 18th Street  
 Denver, Colorado 80202



## CONSULTING, LLC

SHERIDAN OFFICE  
 2155 North Main Street  
 Sheridan, Wyoming 82801  
 Phone 307-674-0609

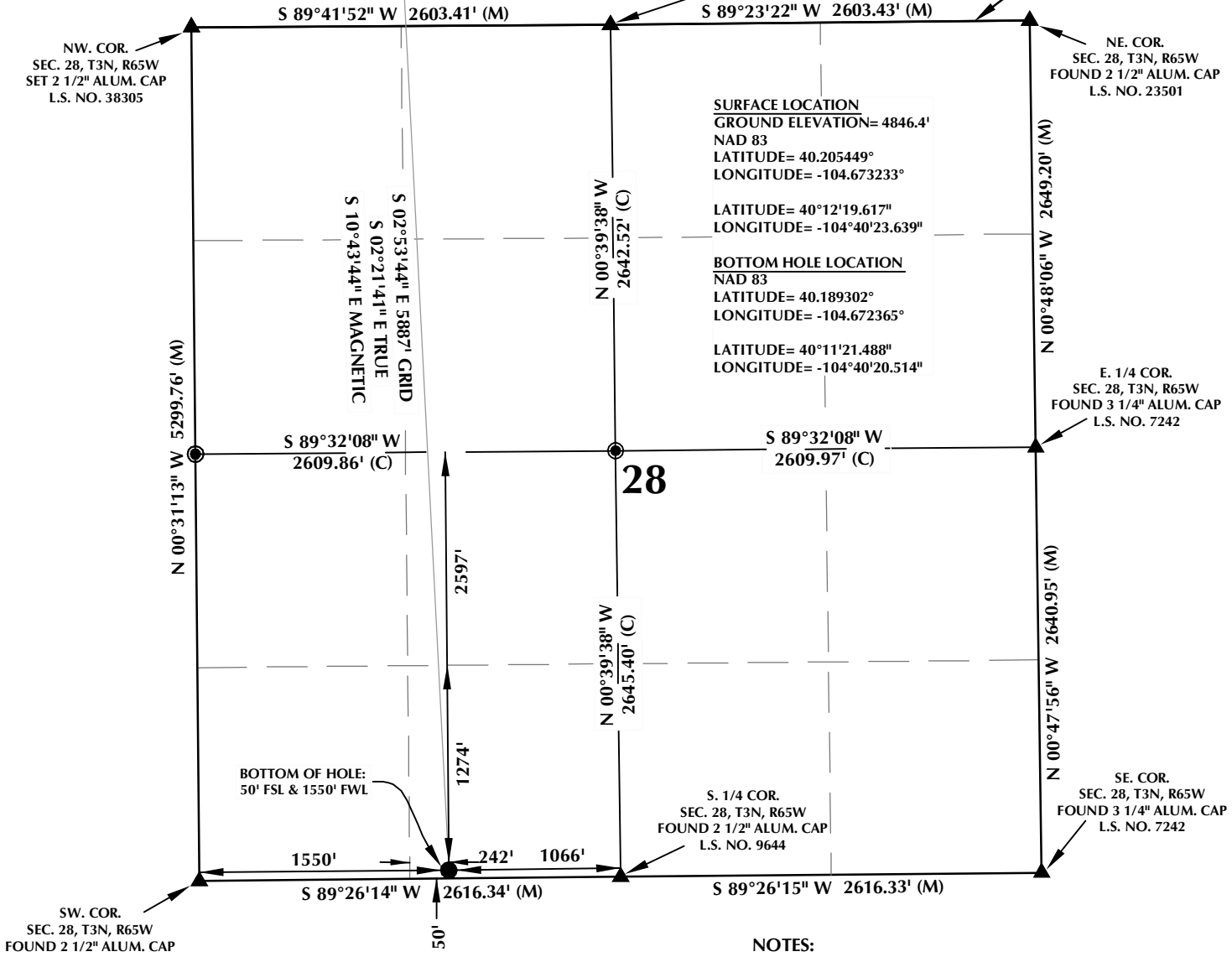
LOVELAND OFFICE  
 1635 Foxtrail Drive, Suite 204  
 Loveland, Colorado 80538  
 Phone 970-776-4331

DRAFTED BY:	LMO	CHECKED BY:	BJR	SHEET NO: <b>1A</b> 1A OF 1
DATE DRAFTED:	8/8/14	DATE SURVEYED:	8/7/14	
REVISED:	10/31/14	FILE NAME:	14-46	

# T3N, R65W

N. 1/4 COR.  
SEC. 28, T3N, R65W  
FOUND 2 1/2" ALUM. CAP  
L.S. NO. 30120

MATCH LINE  
SEE SHEET 1A



**SURFACE LOCATION**  
GROUND ELEVATION= 4846.4'  
NAD 83  
LATITUDE= 40.205449°  
LONGITUDE= -104.673233°

**BOTTOM HOLE LOCATION**  
NAD 83  
LATITUDE= 40°12'19.617"  
LONGITUDE= -104°40'23.639"

LATITUDE= 40°11'21.488"  
LONGITUDE= -104°40'20.514"

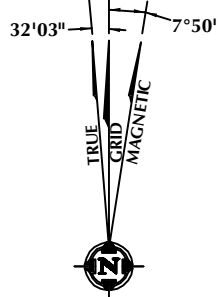
## CERTIFICATE OF SURVEYOR:

THIS IS TO CERTIFY THAT THE ABOVE PLAT WAS PREPARED FROM FIELD NOTES OF ACTUAL SURVEY MADE BY ME OR UNDER MY SUPERVISION AND THAT THE SAME ARE TRUE AND CORRECT TO THE BEST OF MY KNOWLEDGE AND BELIEF. THIS CERTIFICATE DOES NOT REPRESENT A LAND SURVEY PLAT OR IMPROVEMENT SURVEY PLAT AS DEFINED BY C.S. 38-51-102 AND CANNOT BE RELIED UPON TO DETERMINE OWNERSHIP.

*Benjamin J. Reenders*  
PROFESSIONAL LAND SURVEYOR  
10/31/14

BENJAMIN J. REENDERS  
PROFESSIONAL LAND SURVEYOR  
COLORADO REGISTRATION NUMBER 1433

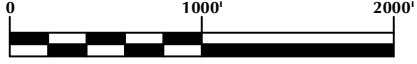
NOTICE:  
ACCORDING TO COLORADO STATE LAW YOU MUST COMMENCE ANY LEGAL ACTION BASED UPON ANY DEFECT IN THIS SURVEY WITHIN THREE YEARS AFTER YOU FIRST DISCOVER SUCH DEFECT. IN NO EVENT MAY ANY ACTION BASED UPON ANY DEFECT IN THIS SURVEY BE COMMENCED MORE THAN TEN YEARS FROM THE DATE ON THE CERTIFICATION SHOWN HEREON.



NOTE:  
MAGNETIC NORTH IS CURRENT AS OF 7/29/2014.  
MAGNETIC NORTH CHANGES WEST 0°08' PER YEAR.

## NOTES:

- ▲ INDICATES FOUND SECTION CORNER
- INDICATES CALCULATED CORNER
- ELEVATION BASED ON NAVD88 (GEOID09)
- BASIS OF BEARING DERIVED FROM COLORADO COORDINATE SYSTEM 1983 NORTH ZONE UNLESS OTHERWISE NOTED.
- ALL MEASURED DISTANCES ARE GRID.  
COMBINED SCALE FACTOR: .99972948
- OPERATOR: ROB WILSON / PDOP = 1.4
- SEE ADDENDUM TO WELL LOCATION CERTIFICATE FOR EXISTING IMPROVEMENTS WITHIN 500' OF THE WELL PAD.
- WELL FOOTAGES ARE MEASURED AT RIGHT ANGLES TO THE SECTION LINES.
- THE BOTTOM OF HOLE BEARS S02°53'44"E 5887' FROM THE SURFACE LOCATION.



SCALE: 1" = 1000'

## WELL PAD - SKIM STATE 4N-21HZ

SKIM 35C-28HZ  
WELL LOCATION CERTIFICATE  
638' FSL & 1301' FWL SESW (SURFACE)  
LOCATED IN SECTION 21  
50' FSL & 1550' FWL SESW (BOTTOM)  
LOCATED IN SECTION 28  
T3N, R65W, 6TH P.M.  
WELD COUNTY, COLORADO

**Kerr-McGee Oil &  
Gas Onshore L.P.**  
1099 18th Street  
Denver, Colorado 80202



## CONSULTING, LLC

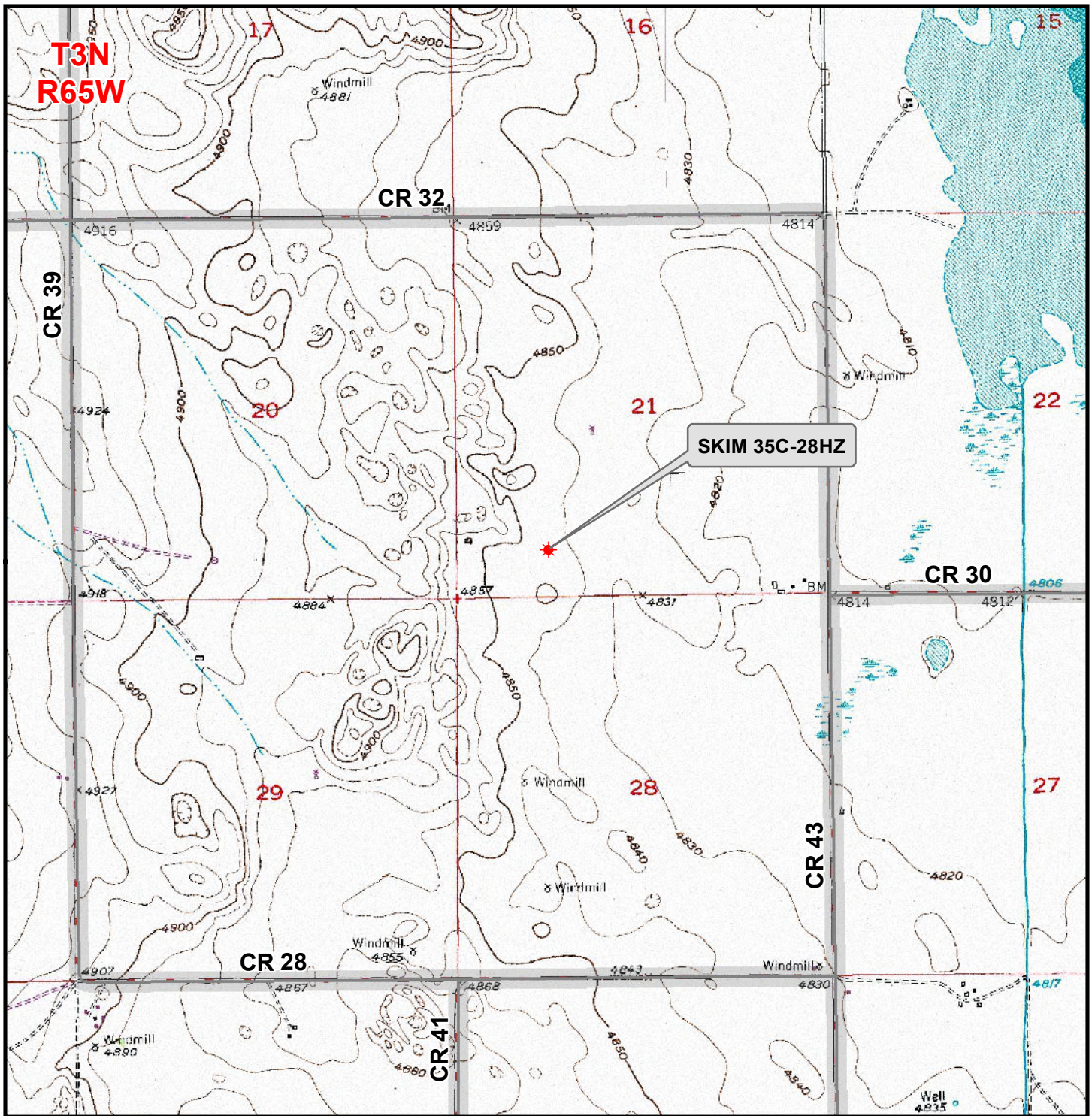
SHERIDAN OFFICE  
2155 North Main Street  
Sheridan, Wyoming 82801  
Phone 307-674-0609

LOVELAND OFFICE  
1635 Foxtrail Drive, Suite 204  
Loveland, Colorado 80538  
Phone 970-776-4331

DRAFTED BY:	LMO	CHECKED BY:	BJR	SHEET NO: <b>1B</b> 1B OF 1
DATE DRAFTED:	8/8/14	DATE SURVEYED:	8/7/14	
REVISED:	10/31/14	FILE NAME:	14-46	

K:\ADARKO\2014\2014\_46\_MOSER\_WELL-STAKING\_28E5W\PLATS\SKIM 4N-21HZ\SKIM 4N-21HZ SOUTH.dwg, 10/28/2014 11:37:48 AM, malloy

K:\ANADARKO\2014\2014\_46\_MOSER\_WELL-STAKING\_3N65W\GIS\Maps\_ABC\SKIM 4N-21HZ\SKIM 35C-28HZ.mxd 8/18/2014 4:47:57 PM



**Legend**

- Well - Fee - Proposed
- Road - Primitive - Existing
- Road - County - Existing
- Road - Improved - Existing
- Road - Highway - Existing

**WELL PAD - SKIM STATE 4N-21HZ**  
**GENERAL LOCATION MAP**  
**SKIM 35C-28HZ**  
 LOCATED IN SECTION 21  
 T3N, R65W, 6th P.M.  
 WELD COUNTY, COLORADO

**Kerr-McGee Oil &  
 Gas Onshore L.P.**  
 1099 18th Street  
 Denver, Colorado 80202



**CONSULTING, LLC**  
 SHERIDAN OFFICE 2155 North Main Street  
 Sheridan, Wyoming 82801  
 Phone 307-674-0609  
 LOVELAND OFFICE 1635 Foxtail Drive, Suite 204  
 Loveland, Colorado 80538  
 Phone 970-776-4331

SCALE: 1" = 2,000ft	NAD83 CO-Nft
DRAWN: TL	DATE: 30 July 2014
REVISED: JELo	DATE: 20 Aug 2014