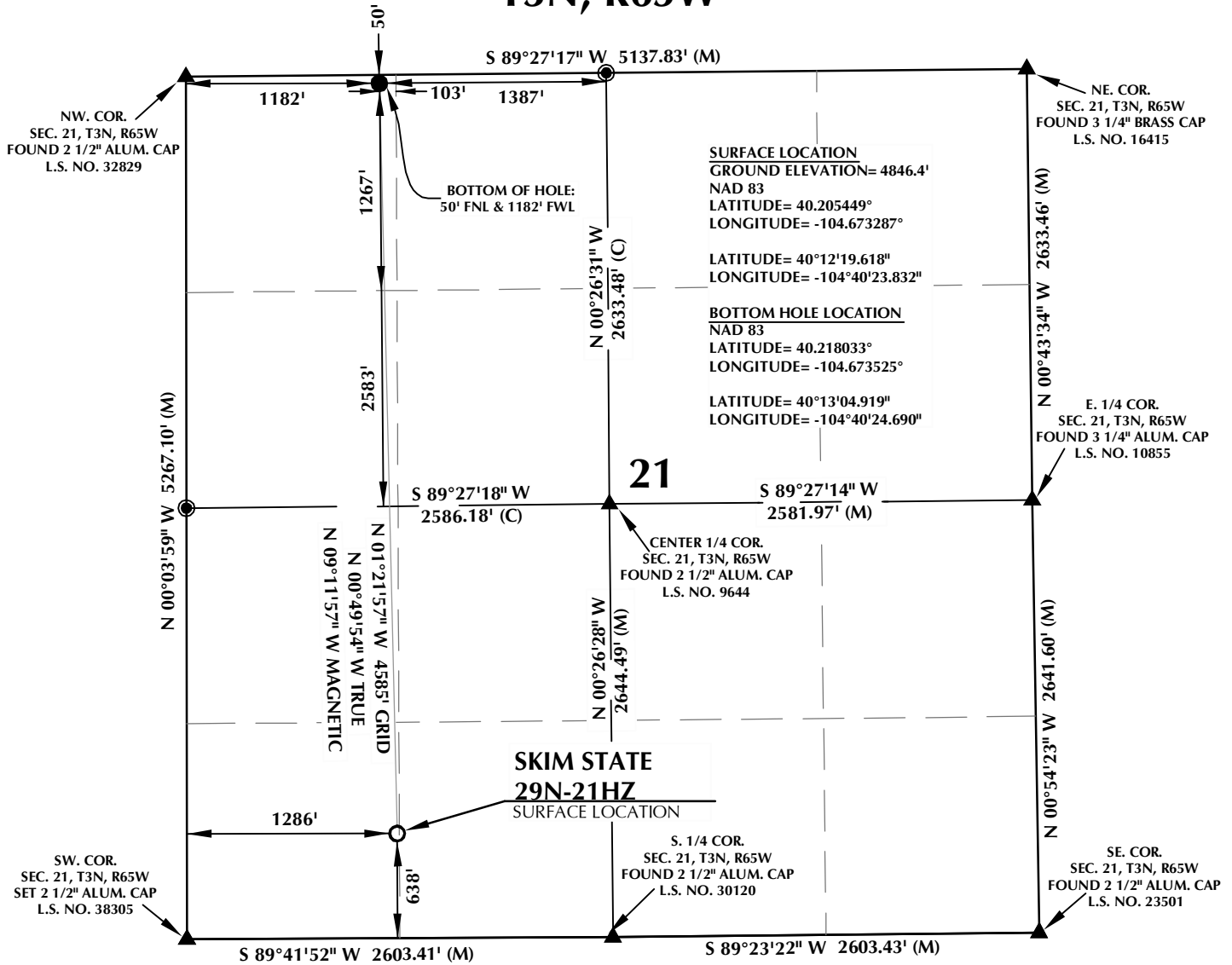


T3N, R65W



SURFACE LOCATION
 GROUND ELEVATION= 4846.4'
 NAD 83
 LATITUDE= 40.205449°
 LONGITUDE= -104.673287°

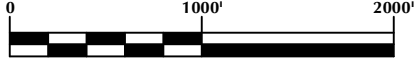
BOTTOM HOLE LOCATION
 NAD 83
 LATITUDE= 40.218033°
 LONGITUDE= -104.673525°

LATITUDE= 40°12'19.618"
 LONGITUDE= -104°40'23.832"

LATITUDE= 40°13'04.919"
 LONGITUDE= -104°40'24.690"

NOTES:

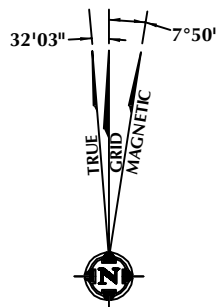
- ▲ INDICATES FOUND SECTION CORNER
- INDICATES CALCULATED CORNER
- ELEVATION BASED ON NAVD88 (GEOID09)
- BASIS OF BEARING DERIVED FROM COLORADO COORDINATE SYSTEM 1983 NORTH ZONE UNLESS OTHERWISE NOTED.
- ALL MEASURED DISTANCES ARE GRID.
COMBINED SCALE FACTOR: .99972948
- OPERATOR: ROB WILSON / PDOP = 1.4
- SEE ADDENDUM TO WELL LOCATION CERTIFICATE FOR EXISTING IMPROVEMENTS WITHIN 500' OF THE WELL PAD.
- WELL FOOTAGES ARE MEASURED AT RIGHT ANGLES TO THE SECTION LINES.
- THE BOTTOM OF HOLE BEARS N01°21'57"W 4585' FROM THE SURFACE LOCATION.



CERTIFICATE OF SURVEYOR:

THIS IS TO CERTIFY THAT THE ABOVE PLAT WAS PREPARED FROM FIELD NOTES OF ACTUAL SURVEY MADE BY ME OR UNDER MY SUPERVISION AND THAT THE SAME ARE TRUE AND CORRECT TO THE BEST OF MY KNOWLEDGE AND BELIEF. THIS CERTIFICATE DOES NOT REPRESENT A LAND SURVEY PLAT OR IMPROVEMENT SURVEY PLAT AS DEFINED BY C.S. 38-51-102 AND CANNOT BE RELIED UPON TO DETERMINE OWNERSHIP.

Benjamin J. Reenders
 BENJAMIN J. REENDERS
 PROFESSIONAL LAND SURVEYOR
 COLORADO REGISTRATION NUMBER 483305
 8/20/14



NOTE:
 MAGNETIC NORTH IS CURRENT AS OF 7/29/2014.
 MAGNETIC NORTH CHANGES WEST 0°08' PER YEAR.

NOTICE:
 ACCORDING TO COLORADO STATE LAW YOU MUST COMMENCE ANY LEGAL ACTION BASED UPON ANY DEFECT IN THIS SURVEY WITHIN THREE YEARS AFTER YOU FIRST DISCOVER SUCH DEFECT. IN NO EVENT MAY ANY ACTION BASED UPON ANY DEFECT IN THIS SURVEY BE COMMENCED MORE THAN TEN YEARS FROM THE DATE ON THE CERTIFICATION SHOWN HEREON.

WELL PAD - SKIM STATE 4N-21HZ

SKIM STATE 29N-21HZ
 WELL LOCATION CERTIFICATE
 638' FSL & 1286' FWL SWSW (SURFACE)
 50' FNL & 1182' FWL NWNW (BOTTOM)
 LOCATED IN SECTION 21
 T3N, R65W, 6TH P.M.
 WELD COUNTY, COLORADO

**Kerr-McGee Oil &
 Gas Onshore L.P.**
 1099 18th Street
 Denver, Colorado 80202

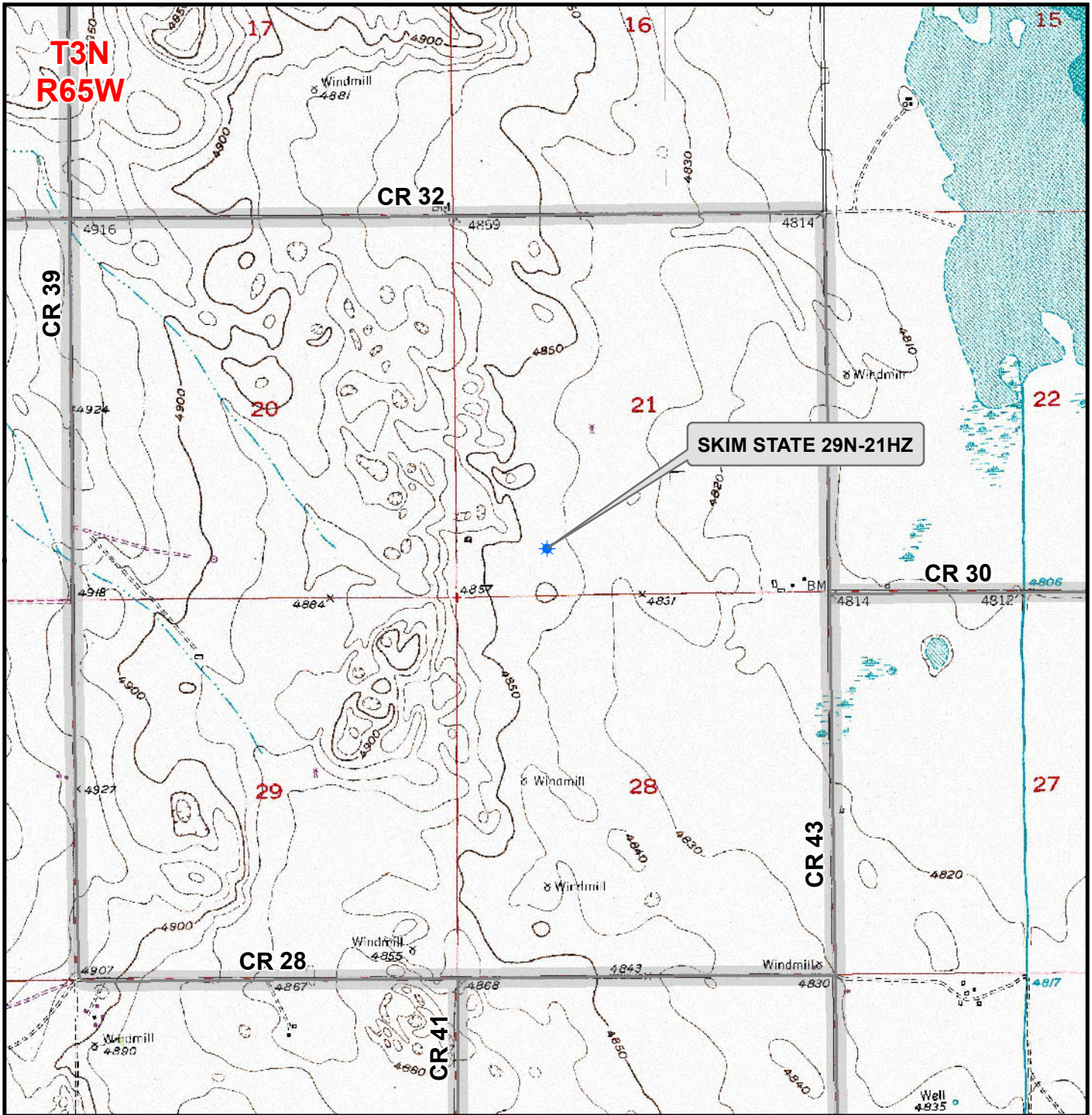


CONSULTING, LLC

SHERIDAN OFFICE: 2155 North Main Street, Sheridan, Wyoming 82801, Phone 307-674-0609
 LOVELAND OFFICE: 1635 Foxtrail Drive, Suite 204, Loveland, Colorado 80538, Phone 970-776-4331

DRAFTED BY:	LMO	CHECKED BY:	BJR
DATE DRAFTED:	8/8/14	DATE SURVEYED:	8/7/14
REVISED:	8/20/14	FILE NAME:	14-46

K:\ANADARKO\2014\2014_46_MOSER_WELL-STAKING_3N65WGIS\Maps_ABC\SKIM 4N-21HZ\SKIM STATE 29N-21HZ.mxd 8/18/2014 4:50:42 PM



Legend

- Well - State - Proposed
- Road - Primitive - Existing
- Road - County - Existing
- Road - Improved - Existing
- Road - Highway - Existing

WELL PAD - SKIM STATE 4N-21HZ
GENERAL LOCATION MAP
SKIM STATE 29N-21HZ
LOCATED IN SECTION 21
T3N, R65W, 6th P.M.
WELD COUNTY, COLORADO

Kerr-McGee Oil & Gas Onshore L.P.
 1099 18th Street
 Denver, Colorado 80202



CONSULTING, LLC
 SHERIDAN OFFICE 2155 North Main Street
 Sheridan, Wyoming 82801
 Phone 307-674-0609
 LOVELAND OFFICE 1635 Foxtail Drive, Suite 204
 Loveland, Colorado 80538
 Phone 970-776-4331

SCALE: 1" = 2,000ft	NAD83 CO-Nft
DRAWN: TL	DATE: 30 July 2014
REVISED: JELO	DATE: 20 Aug 2014

