

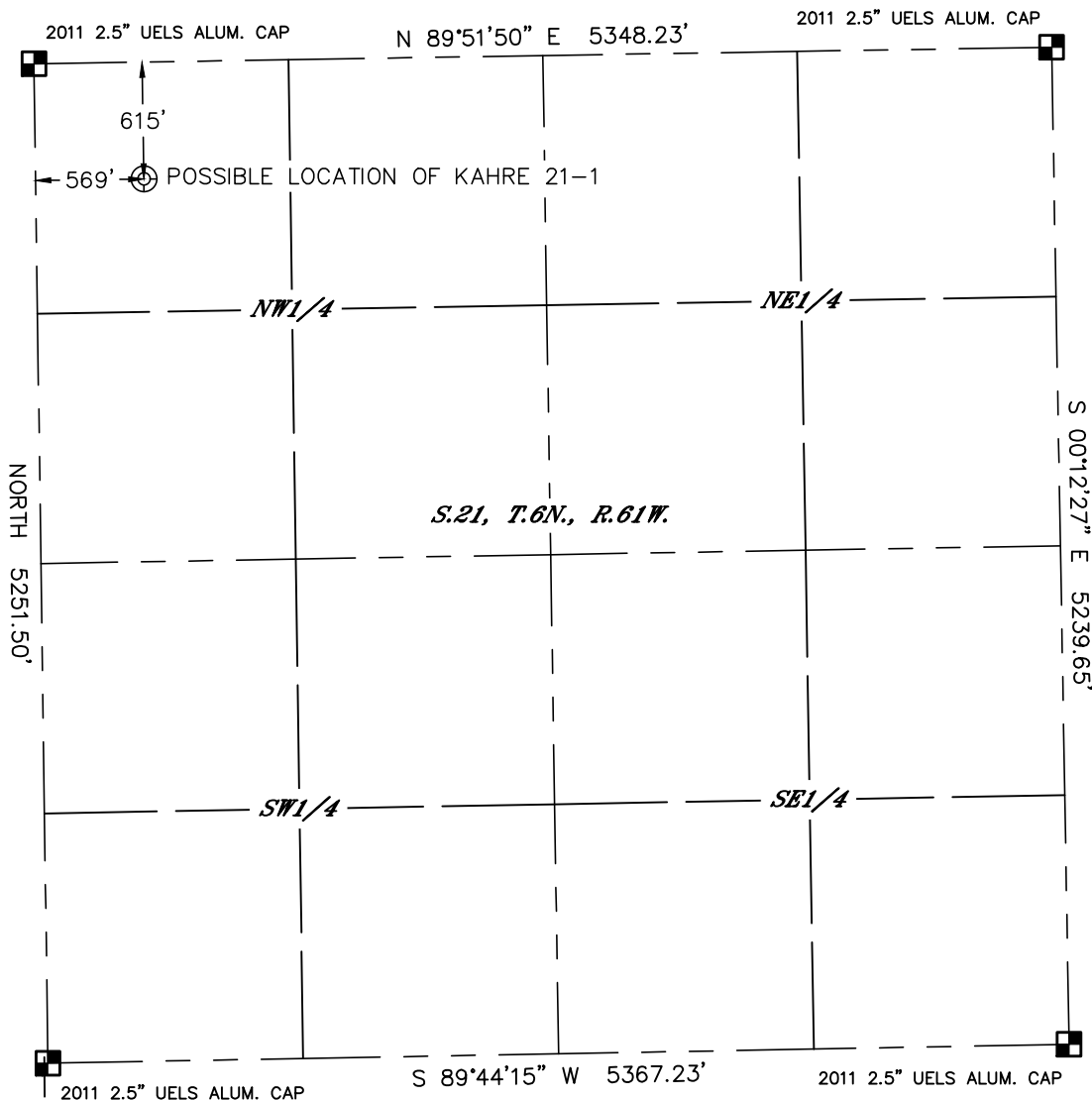


Lat40°, Inc. 6250 W. 10th Street, Unit 2 Greeley, CO 970-515-5294

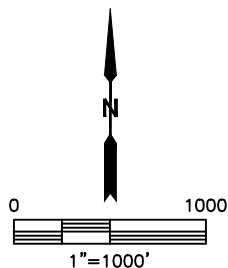
PLUGGED & ABANDONED WELL EXHIBIT

THIS MAP DOES NOT REPRESENT A BOUNDARY SURVEY

SECTION: 21
TOWNSHIP: 6N
RANGE: 61W



NOTE: ALL ALIQUOT AND SECTION DATA FROM WELL LOCATION CERTIFICATE OF GREASEWOOD 11-21H



SURFACE LOCATION

LAT: 40.47918°N
LONG: 104.22163°W
PDOP: 1.8
ELEV: 4681'
1/4,1/4: NWNW

SURFACE DESCRIPTION

FOUND A STRONG METAL DETECTOR SIGNAL WITHIN 8'
DIA. OF LOCATION. SET T-POST WITH PINK LATH AND
FLAGGING.

LEGEND

- = ALIQUOT MONUMENT AS DESCRIBED
- = CALCULATED POSITION



Lat40°, Inc. 6250 W. 10th Street, Unit 2 Greeley, CO 970-515-5294

P&A WELL LOCATION PICTURES

KAHRE 21-1

SECTION: 21
TOWNSHIP: 6N
RANGE: 61W

DATE: 10/21/2014



VIEW NORTH



VIEW WEST



VIEW EAST



VIEW SOUTH