

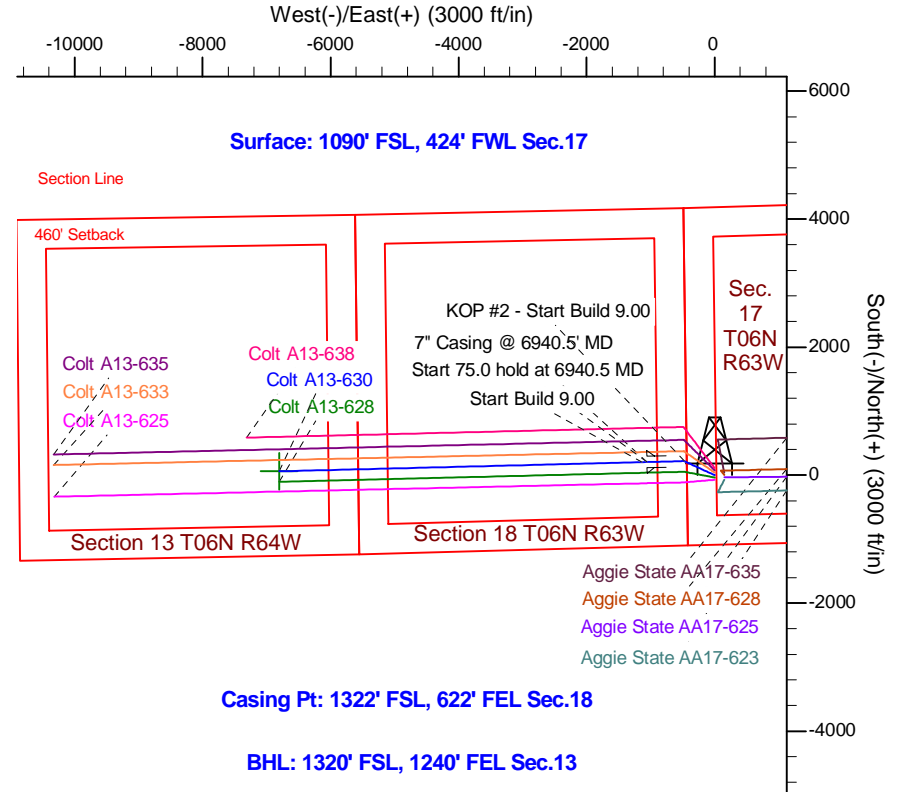
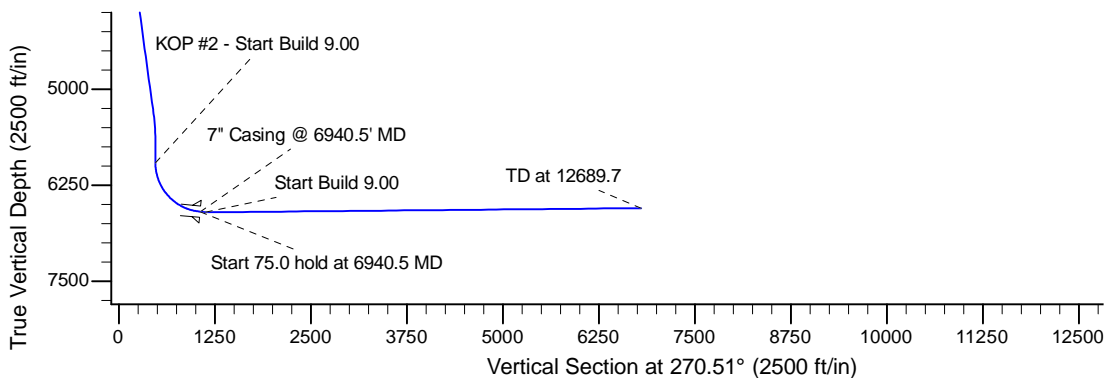
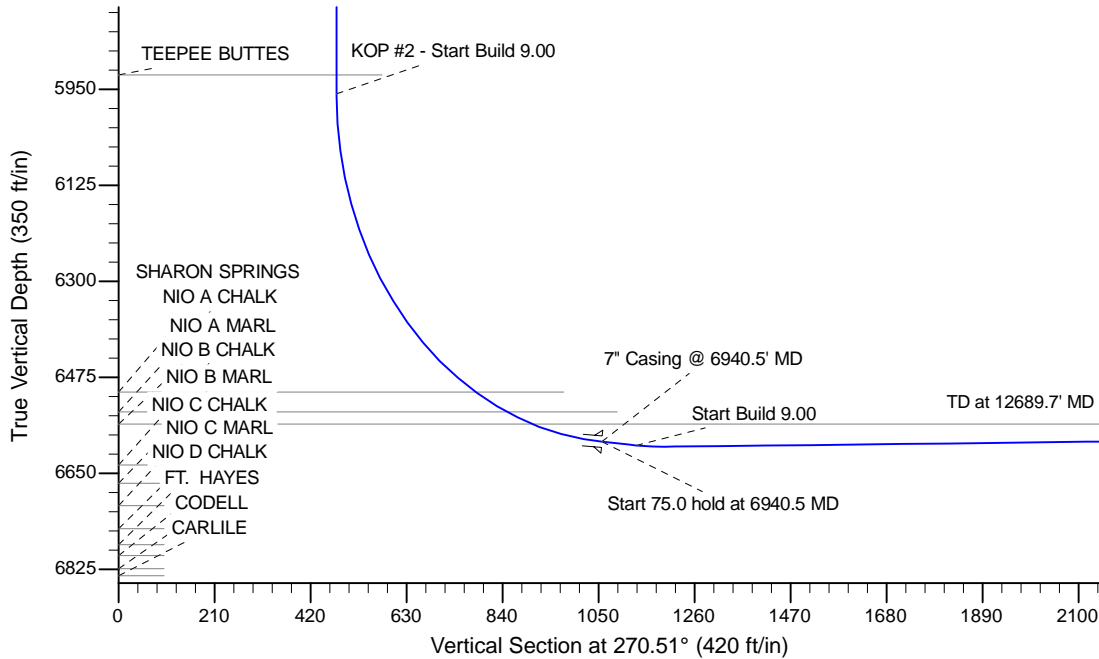
Project: Wattenberg Field  
 Site: A (Sec.17-T06N-R63W) Weld County, CO  
 Well: Colt A13-630  
 Wellbore: Original Drilling  
 Design: APD - Rev 0

# Northern Region Drilling - Working

Geodetic System: US State Plane 1983  
 Datum: North American Datum 1983  
 Ellipsoid: GRS 1980  
 Zone: Colorado Northern Zone  
 System Datum: Mean Sea Level

### SECTION DETAILS

Sec	MD	Inc	Azi	TVD	+N/-S	+E/-W	Dleg	TFace	Vsect	Target
1	0.0	0.00	0.00	0.0	0.0	0.0	0.00	0.00	0.0	
2	1800.0	0.00	0.00	1800.0	0.0	0.0	0.00	0.00	0.0	
3	2228.2	8.56	294.85	2226.6	13.4	-29.0	2.00	294.85	29.1	
4	5314.4	8.56	294.85	5278.4	206.6	-446.0	0.00	0.00	447.8	
5	5742.6	0.00	0.00	5705.0	220.0	-475.0	2.00	180.00	476.9	
6	5996.0	0.00	0.00	5958.4	220.0	-475.0	0.00	0.00	476.9	
7	6940.5	85.00	268.55	6592.6	205.3	-1056.0	9.00	268.55	1057.7	
8	7015.5	85.00	268.55	6599.2	203.5	-1130.6	0.00	0.00	1132.4	
9	7077.2	90.55	268.55	6601.6	201.9	-1192.2	9.00	0.00	1194.0	
10	12689.7	90.55	268.55	6547.7	60.3	-6802.7	0.00	0.00	6803.0	Colt A13-630 BHL 1320'FSL, 1240'FEL



**T G M**

Azimuths to Grid North  
 True North: -0.67°  
 Magnetic North: 7.55°

Magnetic Field  
 Strength: 52889.0snT  
 Dip Angle: 67.06°  
 Date: 9/23/2014  
 Model: IGRF200510

WELL DETAILS: Colt A13-630				
Ground Level: 4666.0				
	Northing	Easting	Latitude	Longitude
0.0	0.0	1420191.97	3286844.97	40.482250 -104.468800
Plan: APD - Rev 0 (Colt A13-630/Original Drilling)				
Created By:	Shaily Jewell		Date: 9:58, September 24 2014	
Checked:	_____		Date: _____	
Reviewed:	_____		Date: _____	
Approved:	_____		Date: _____	