

1625 Broadway
Suite 2000
Denver, CO 80202



Tel: 303.228.4000
Fax: 303.228.4280
www.nobleenergyinc.com

November 18, 2014

Colorado Oil and Gas Conservation Commission
The Chancery Building
1120 Lincoln Street, Suite 801
Denver, CO 80203
Attn: Mr. Matt Lepore, Director

RE: **Colt A13-615**
Section 17: SW/4SW/4 Township 6 North, Range 63 West, 6th P.M.
Weld County, Colorado

Mr. Lepore:

Noble Energy, Inc. ("NEI") is planning to drill the captioned boundary well in accordance with the provisions of COGCC Rule 318A.e.

NEI's proposed wellbore spacing unit consists of the Sec 18: S/2S/2, Sec 19: N/2N/2, T6N-R63W, Sec 13: S/2S/2, Sec 24: N/2N/2., T6N, R64W, creating a 640-acre wellbore spacing unit for the Niobrara formation. NEI is not the only owner within the proposed wellbore spacing unit and as such provided notice to the remaining owner(s) within said proposed spacing unit as required under COGCC Rule 318A(I).e(6). Copies of the required notice letter(s) is/are on file at the NEI offices. The required thirty (30) day notice period has elapsed absent the receipt by NEI of an objection to said proposal by the owner(s) within the proposed spacing unit for this well.

Enclosed are copies of the following documents to assist you in your review and approval of NEI's proposed APD for the captioned well:

- Map & plat illustrating proposed wellbore spacing unit.

Thank you for your attention to the enclosed. NEI respectfully requests that the COGCC review the enclosed information and approve the Application for Permit to Drill the captioned well.

Sincerely,

Justin Garrett
Regulatory Analyst II
Noble Energy Inc.

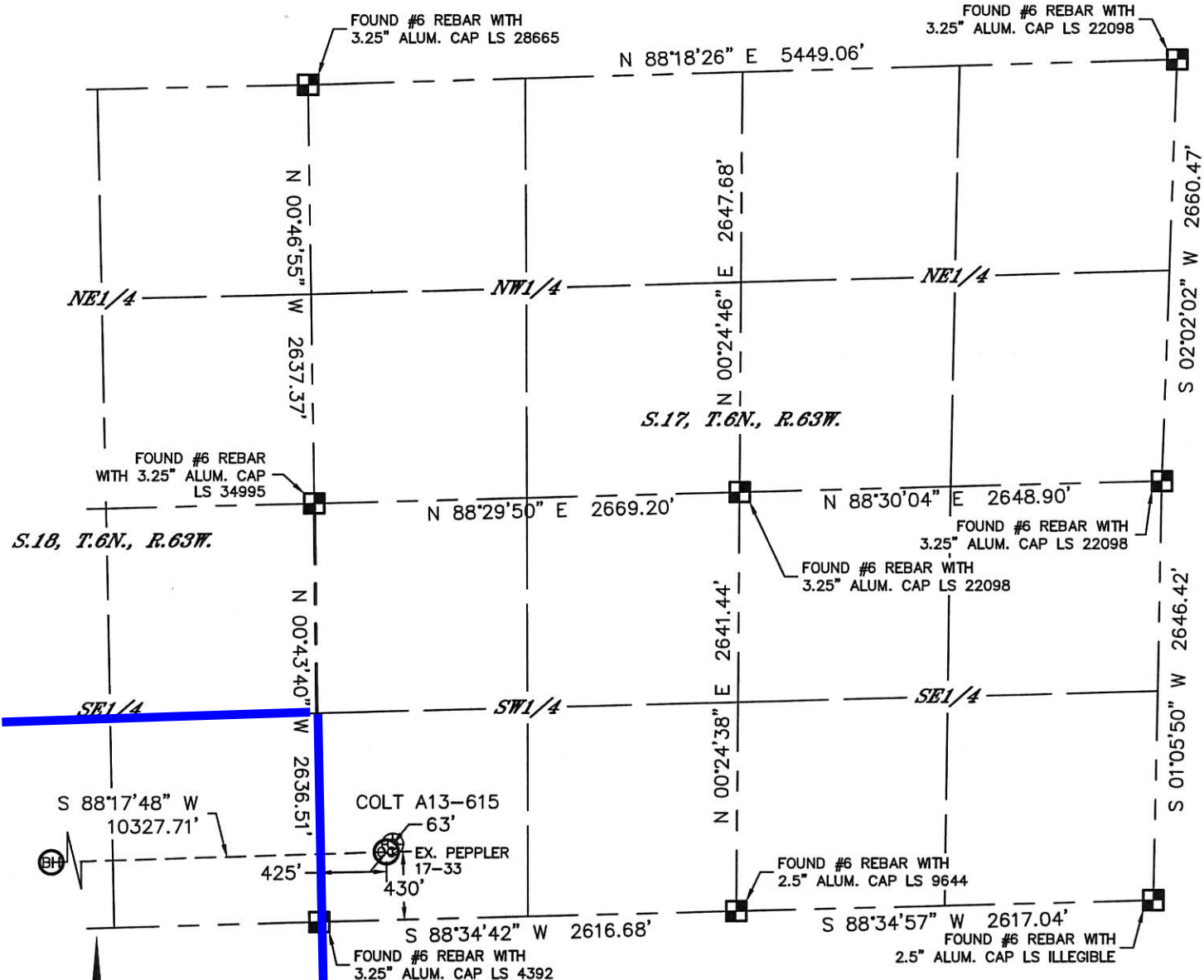


Lat40°, Inc. 6250 W. 10th Street, Unit 2, Greeley, CO 970-515-5294

WELL LOCATION CERTIFICATE

THIS MAP DOES NOT REPRESENT A BOUNDARY SURVEY

SECTION: 17
TOWNSHIP: 6N
RANGE: 63W



In accordance with a request from Greg Wilson with Noble Energy Inc. Lat40°, Inc. has determined the surface location of the COLT A13-615 to be 430' from the SOUTH line and 425' from the WEST line as measured at right angles from the section lines of Section 17, Township 6 North, Range 63 West and the bottom hole to be 360' from the SOUTH line and 535' from the WEST line as measured at right angles from the section lines of Section 13, Township 6 North, Range 64 West of the Sixth Principal Meridian, County of Weld, State of Colorado.

I hereby state that this Well Location Certificate was prepared by me, or under my direct supervision, that the fieldwork was completed on 7/24/2014, for and on behalf of Noble Energy Inc. That this is not a Land Survey Plat or an Improvement Survey Plat, and that it is not to be relied upon for establishment of fence, building, or other future improvement lines.

NOTE:

- Bearings shown are Grid Bearings of the Colorado State Plane Coordinate System, North Zone, North American Datum 1983. The lineal dimensions as contained herein are based upon the "U.S. Survey Foot."
 - Ground elevations are based on an observed GPS elevation (NAVD 1988 DATUM).
 - IMPROVEMENTS: See LOCATION DRAWING for all visible improvements within 500' of disturbed area.
 - SURFACE USE: CROP LAND
 - INSTRUMENT OPERATOR: WYATT HALL
 - NEAREST EXISTING WELL: PEPLER 17-33, ±63' NE
- NEAREST CULTURAL ITEMS:
 BUILDING: ±754' SW
 BUILDING UNIT: ±754' SW
 HIGH OCCUPANCY BUILDING UNIT: 5280'+
 DESIGNATED OUTSIDE ACTIVITY AREA: 5280'+
 PUBLIC ROAD: ±417' S (CR 68)
 ABOVEGROUND UTILITY: ±404' S
 RAILROAD: 5280'+
 PROPERTY LINE: ±425' W

SURFACE LOCATION
 LAT: 40.48044N
 LONG: 104.46879W
 PDOP: 1.8
 ELEV: 4665'
 1/4,1/4: SWSW

BOTTOM HOLE
 LAT: 40.47992N
 LONG: 104.50590W

LEGEND

- = ALIQUOT MONUMENT AS DESCRIBED
- = CALCULATED POSITION

SHEET 1 OF 3

Kyle E. Rutz-On behalf of Lat40°, Inc.
 Colorado Licensed Professional Land Surveyor
 Land Surveyor No. 38307

DATE: 8/22/2014
 PROJECT#: 2013082



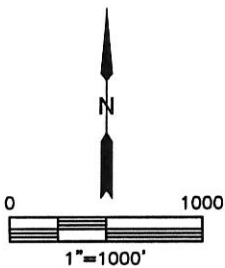
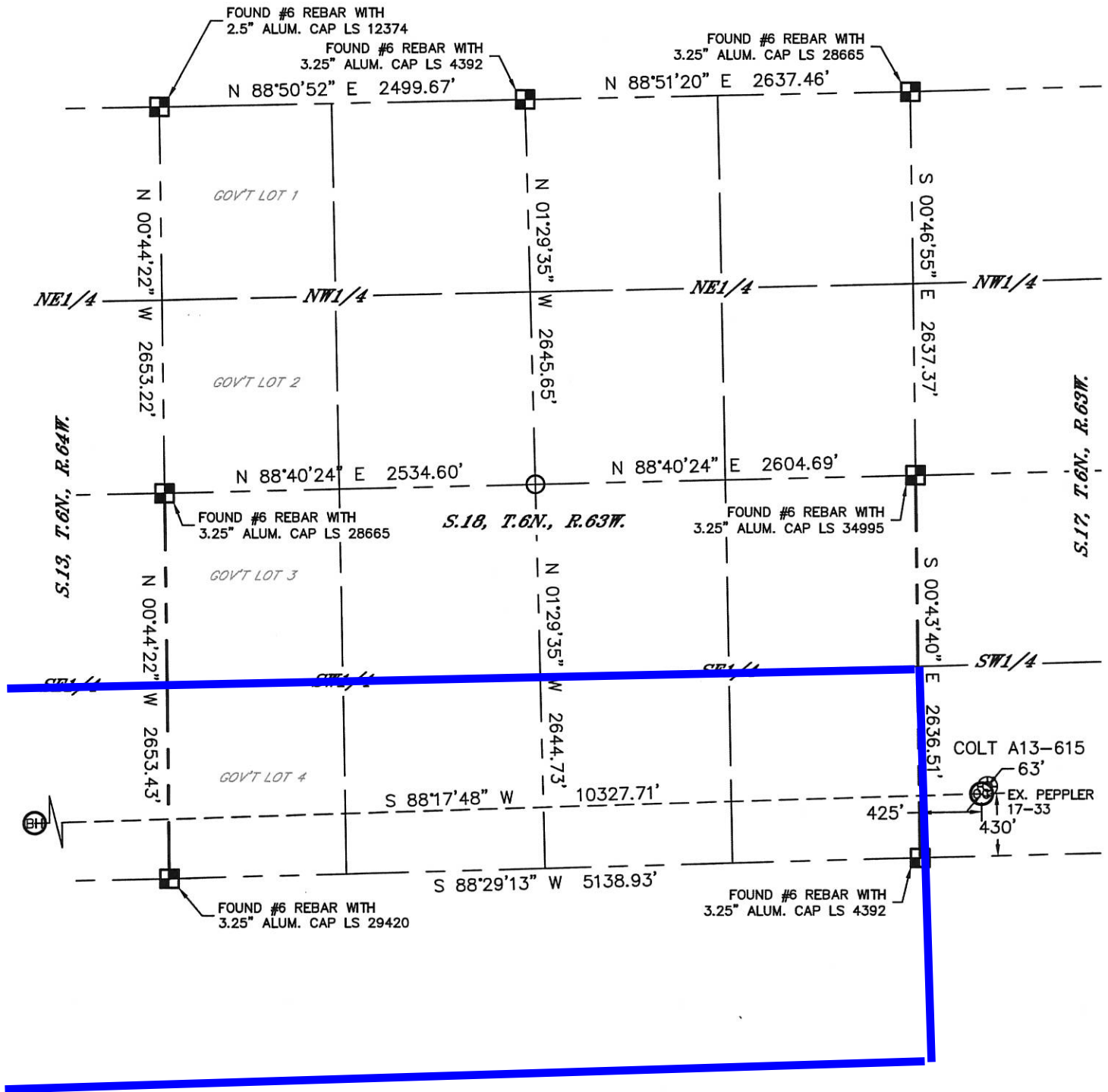


Lat40°, Inc. 6250 W. 10th Street, Unit 2, Greeley, CO 970-515-5294

WELL LOCATION CERTIFICATE

THIS MAP DOES NOT REPRESENT A BOUNDARY SURVEY

SECTION: 17
TOWNSHIP: 6N
RANGE: 63W



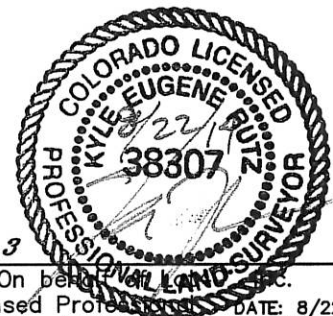
- LEGEND
- = ALIQUOT MONUMENT AS DESCRIBED
 - = CALCULATED POSITION

SHEET 2 OF 3

Kyle E. Rutz-On behalf of Lat40°, Inc.

Colorado Licensed Professional Land Surveyor No. 38307

DATE: 8/22/2014
PROJECT#: 2013082



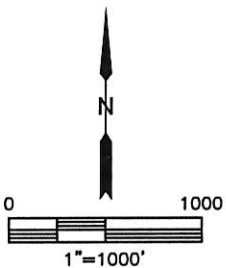
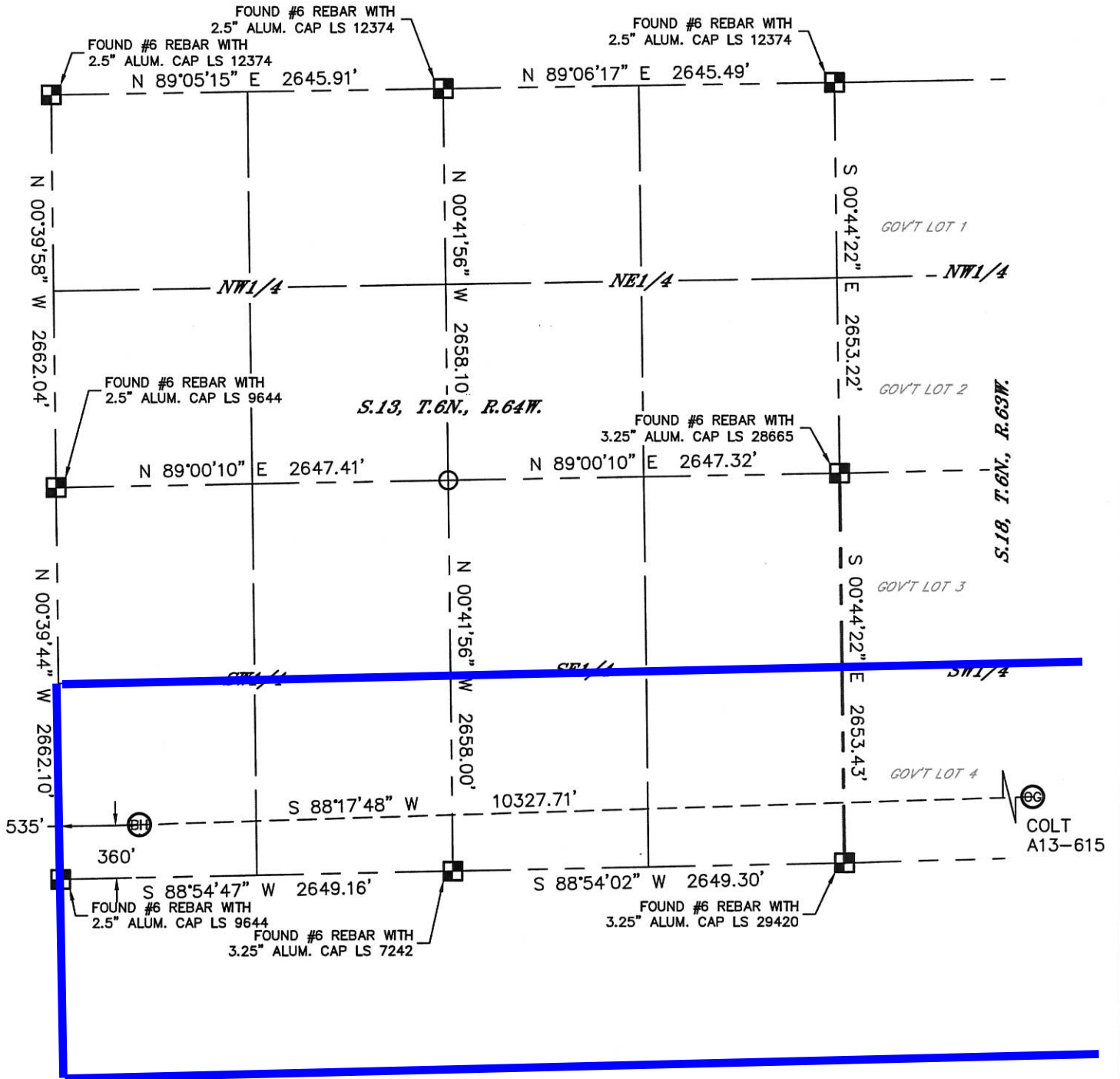


Lat40°, Inc. 6250 W. 10th Street, Unit 2, Greeley, CO 970-515-5294

WELL LOCATION CERTIFICATE

THIS MAP DOES NOT REPRESENT A BOUNDARY SURVEY

SECTION: 17
TOWNSHIP: 6N
RANGE: 63W



- LEGEND
- = ALIQUOT MONUMENT AS DESCRIBED
 - = CALCULATED POSITION

SHEET 3 OF 3

Kyle E. Rutz-On behalf of Lat40°, Inc.
 Colorado Licensed Professional Land Surveyor
 Land Surveyor No. 38307

DATE: 8/22/2014
 PROJECT#: 2013082



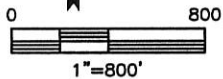
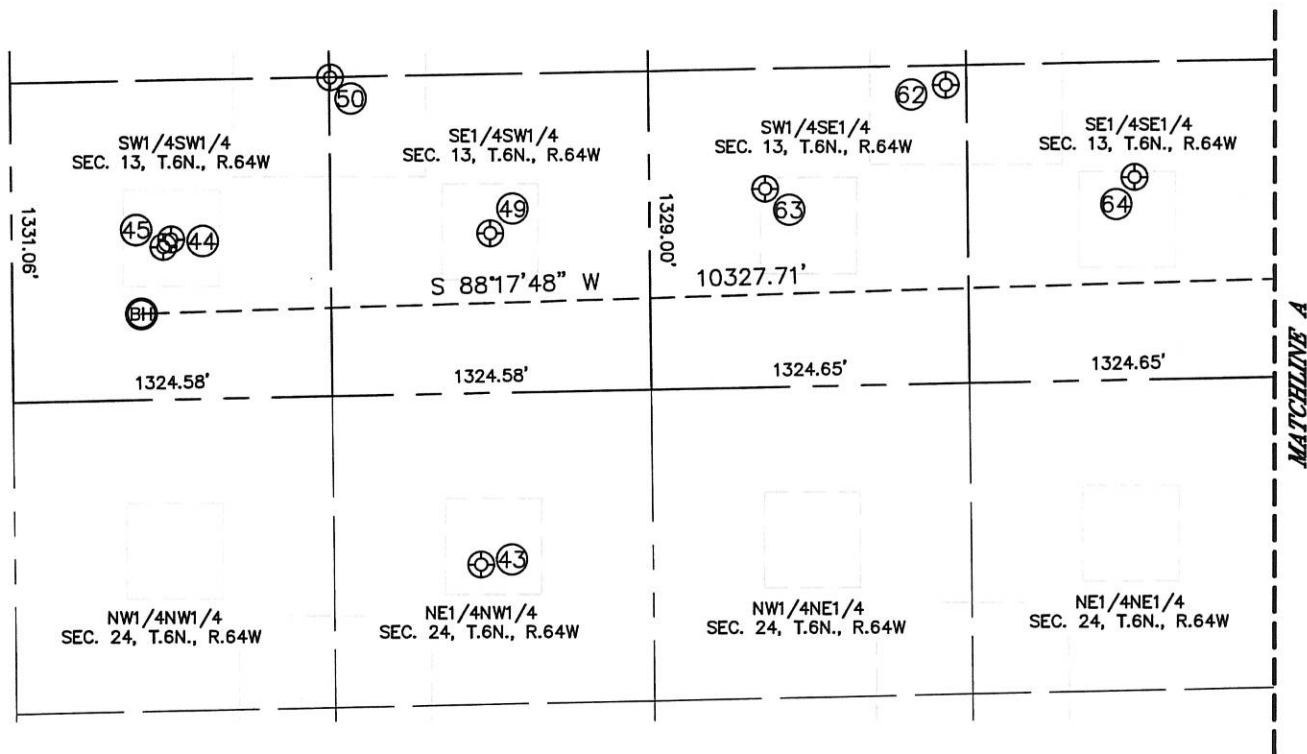
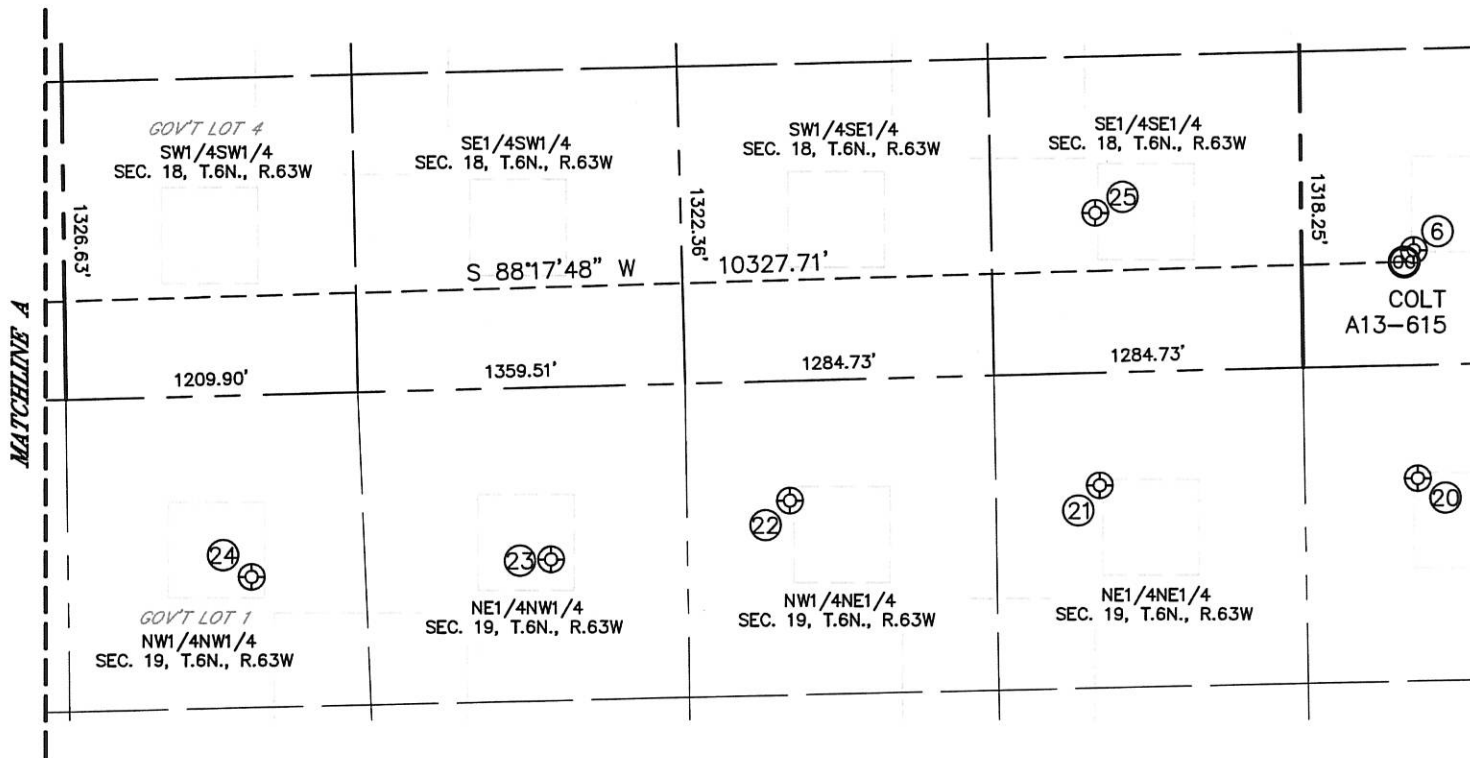


Lat40°, Inc. 6250 W. 10th Street, Unit 2, Greeley, CO 970-515-5294

SITE SKETCH

COLT A13-615

SECTION: 17
TOWNSHIP: 6N
RANGE: 63W



SHEET 1 OF 2

DATE: 8/22/2014
PROJECT#: 2013082



Lat40°, Inc. 6250 W. 10th Street, Unit 2, Greeley, CO 970-515-5294

SITE SKETCH

COLT A13-615

SECTION: 17
TOWNSHIP: 6N
RANGE: 63W

WELL NO.	WELL NAME	SHL FOOTAGE			SHL LAT°	SHL LONG°	PDOP	ELEV (FT.)	1/4/1/4	
6	PEPPLER 17-33	478	FSL	465	FWL	40.48058	-104.46865	2.8	4665	SWSW
20	J&L FARMS 11-20	475	FNL	468	FWL	40.47796	-104.46863	1.9	4665	NWNW
21	J&L FARMS 41-19	471	FNL	854	FEL	40.47792	-104.47338	1.7	4664	NENE
22	J&L FARMS 31-19	502	FNL	2143	FEL	40.47778	-104.47801	1.6	4661	NWNE
23	LARSON USX AA 19-3	720	FNL	2003	FWL	40.47714	-104.48158	1.7	4656	NENW
24	LARSON USX AA 19-4	759	FNL	760	FWL	40.47699	-104.48605	1.9	4652	NWNW
25	PEPPLER 18-44	666	FSL	855	FEL	40.48104	-104.47340	2.1	4662	SESE
43	ROTH 24-21	718	FNL	1934	FWL	40.47700	-104.50087	1.9	4645	NENW
44	LAPP 13-33	666	FSL	662	FWL	40.48077	-104.50545	2.5	4665	SWSW
45	LAPP A24-30D	636	FSL	629	FWL	40.48068	-104.50557	1.7	4664	SWSW
49	LAPP 13-34	666	FSL	1923	FWL	40.48079	-104.50069	1.8	4648	SESW
50	LAPP 13-35	1328	FSL	1327	FWL	40.48260	-104.50306	1.8	4654	SESW
62	JOHNSON A 13-23	1245	FSL	1410	FEL	40.48243	-104.49386	2.8	4653	SWSE
63	JOHNSON A 13-15	827	FSL	2166	FEL	40.48126	-104.49657	2.7	4651	SWSE
64	ROTH A 13-16	845	FSL	630	FEL	40.48135	-104.49105	3.4	4654	SESE