

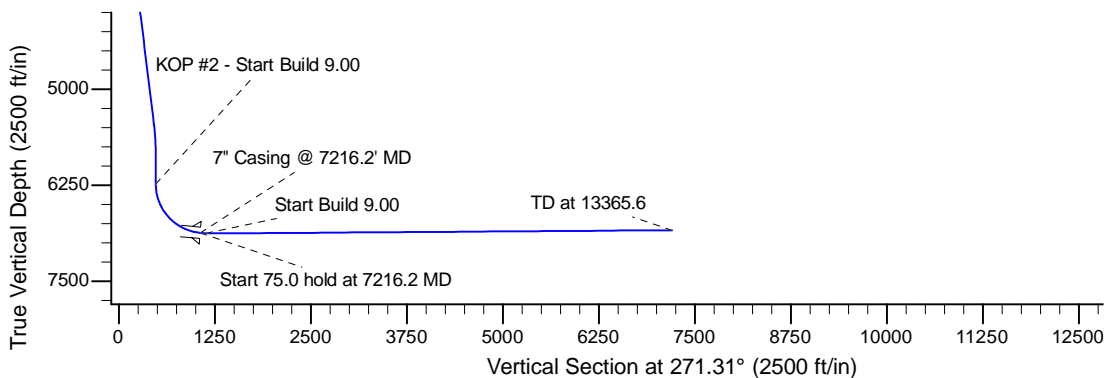
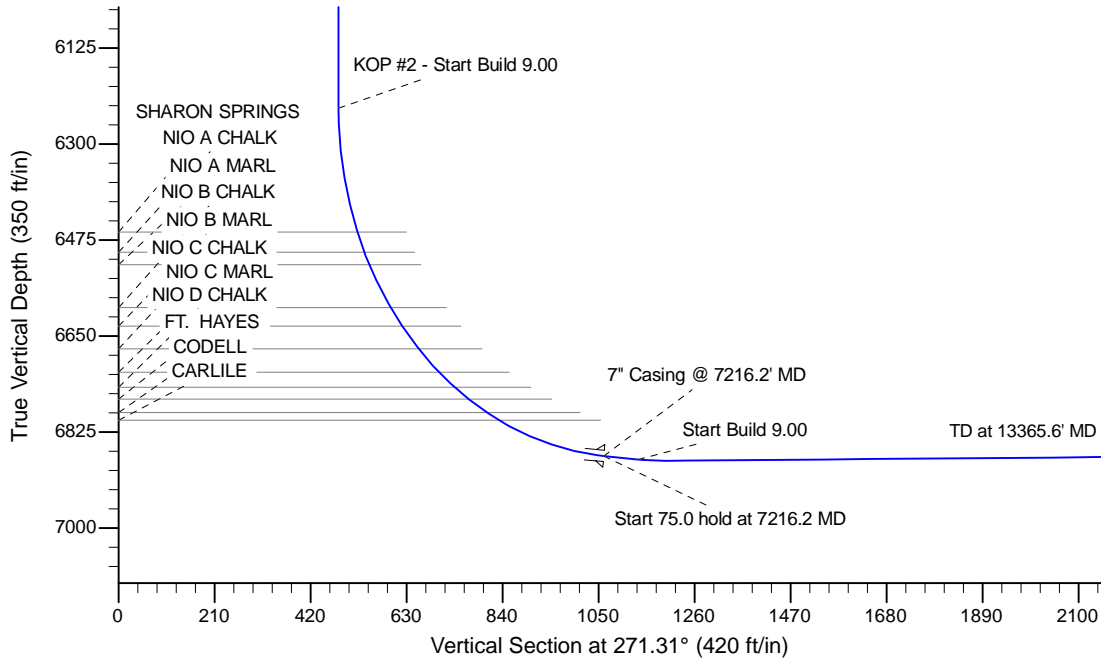
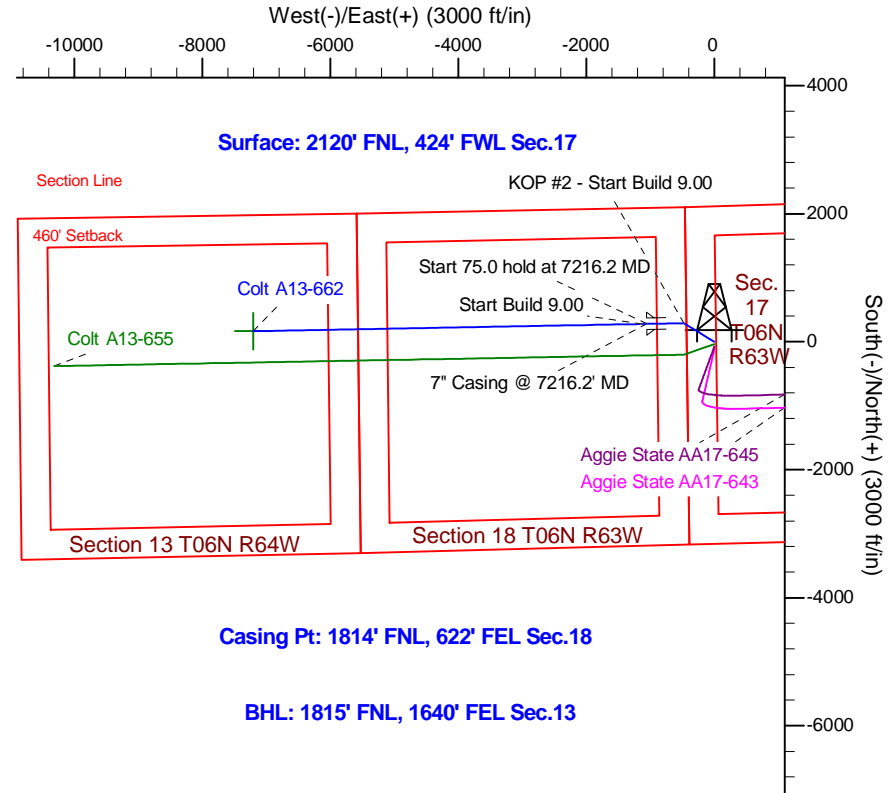
Project: Wattenberg Field
 Site: A (Sec.17-T06N-R63W) Weld County, CO
 Well: Colt A13-662
 Wellbore: Original Drilling
 Design: APD - Rev 0

Northern Region Drilling - Working

Geodetic System: US State Plane 1983
 Datum: North American Datum 1983
 Ellipsoid: GRS 1980
 Zone: Colorado Northern Zone
 System Datum: Mean Sea Level

SECTION DETAILS

Sec	MD	Inc	Azi	TVD	+N/-S	+E/-W	Dleg	TFace	V Sect	Target
1	0.0	0.00	0.00	0.0	0.0	0.0	0.00	0.00	0.0	
2	1500.0	0.00	0.00	1500.0	0.0	0.0	0.00	0.00	0.0	
3	1900.1	8.00	301.41	1898.8	14.5	-23.8	2.00	301.41	24.1	
4	5497.6	8.00	301.41	5461.2	275.5	-451.2	0.00	0.00	457.4	
5	5897.6	0.00	0.00	5860.0	290.0	-475.0	2.00	180.00	481.5	
6	6271.8	0.00	0.00	6234.1	290.0	-475.0	0.00	0.00	481.5	
7	7216.2	85.00	268.94	6868.3	279.2	-1056.0	9.00	268.94	1062.2	
8	7291.2	85.00	268.94	6874.9	277.8	-1130.7	0.00	0.00	1136.8	
9	7351.2	90.40	268.94	6877.3	276.7	-1190.7	9.00	0.00	1196.7	
10	13365.6	90.40	268.94	6835.3	165.0	-7203.9	0.00	0.00	7205.8	Colt A13-662 BHL 1815'FNL, 1640'FEL



T G M

Azimuths to Grid North
 True North: -0.67°
 Magnetic North: 7.55°

Magnetic Field
 Strength: 52893.5snT
 Dip Angle: 67.07°
 Date: 9/18/2014
 Model: IGRF200510

WELL DETAILS: Colt A13-662				
	Northing	Easting	Latitude	Longitude
0.0	0.0	1422257.39	3286818.16	40.487920
Ground Level: 4661.0				
Longitude: -104.468810				
Plan: APD - Rev 0 (Colt A13-662/Original Drilling)				
Created By:	Shailey Jewell		Date:	16:26, September 24 2014
Checked:	_____		Date:	_____
Reviewed:	_____		Date:	_____
Approved:	_____		Date:	_____