

# Bayswater Exploration & Production, LLC

Well Name: **Booth K-26H**

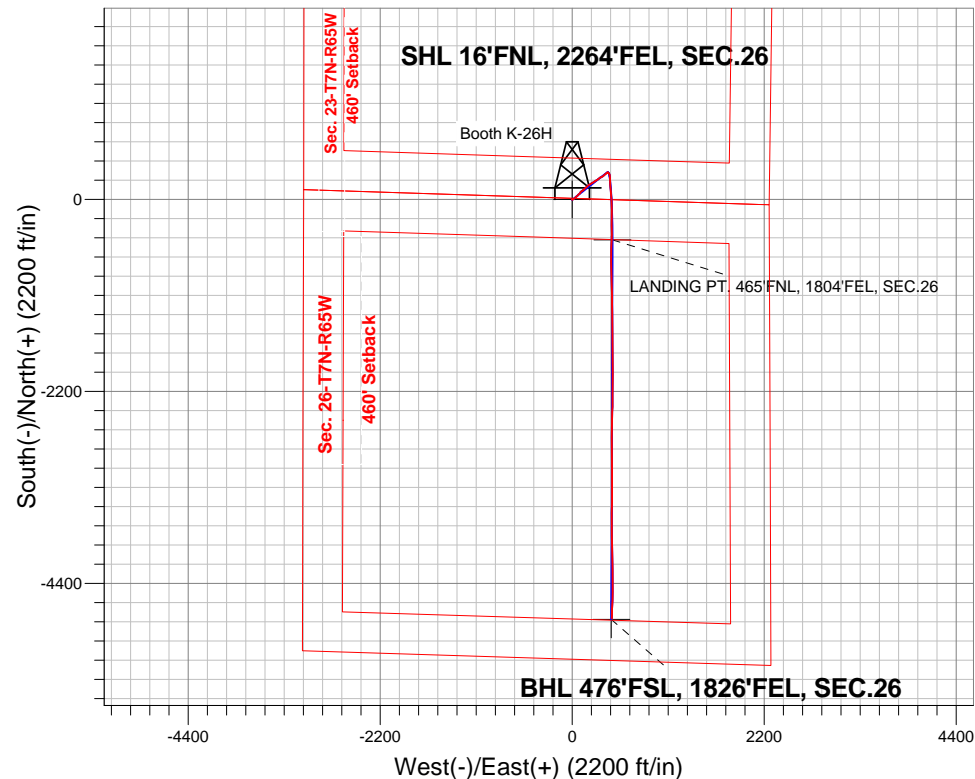
Surface Location: Booth 26 Horizontal Pad Sec.23-T7N-R65W  
North American Datum 1983 , US State Plane 1983 , Colorado Northern Zone

Ground Elevation: 4891.0

+N/-S	+E/-W	Northing	Easting	Latitude	Longitude	Slot
0.0	0.0	1445012.13	3242115.29	40.551693	-104.628714	
RKB - 21' WELL @ 4912.0ft (RKB - 21')						

## FINAL SURVEY

Projected Bottom Hole Location  
11943'MD 7062'TVD 4801'S & 456'E of SHL  
90.7 degree Incl @ 181.4 degree AZM



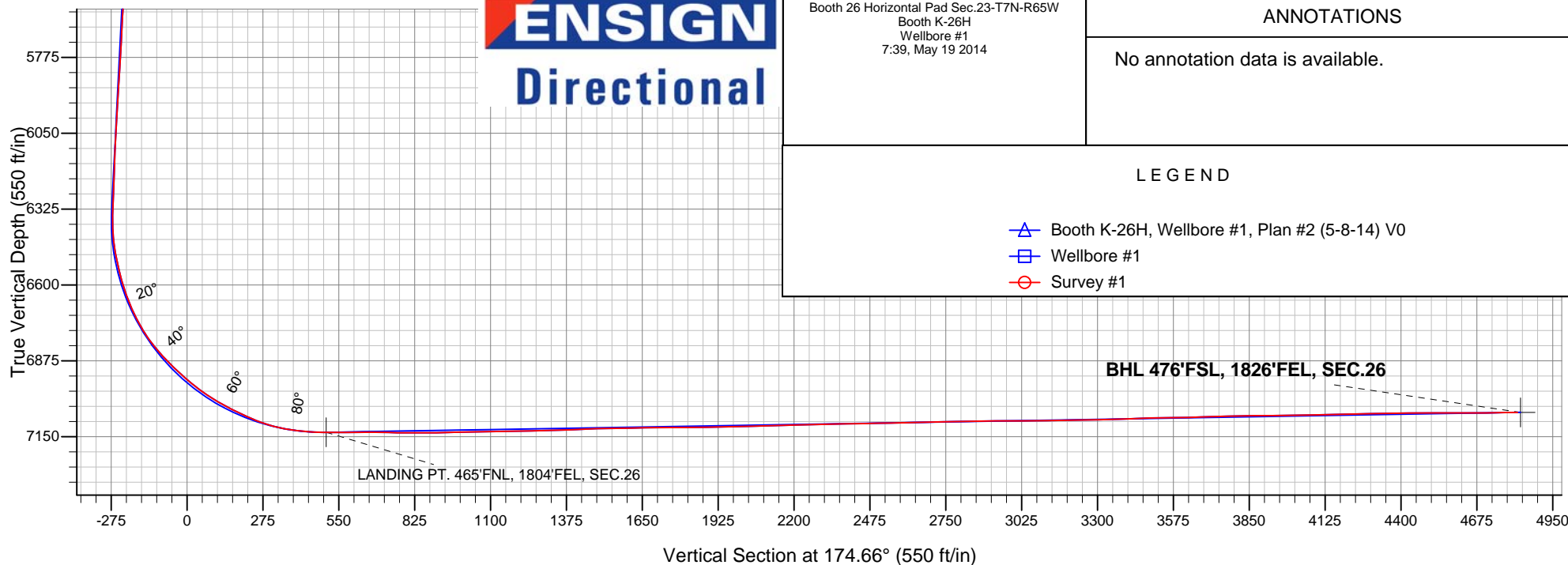
Booth 26 Horizontal Pad Sec.23-T7N-R65W  
Booth K-26H  
Wellbore #1  
7:39, May 19 2014

### ANNOTATIONS

No annotation data is available.

### LEGEND

- Booth K-26H, Wellbore #1, Plan #2 (5-8-14) V0
- Wellbore #1
- Survey #1





# **Bayswater Exploration & Production, LLC**

**SEC.23-T7N-R65W**

**Booth 26 Horizontal Pad Sec.23-T7N-R65W**

**Booth K-26H**

**Wellbore #1**

**Survey: Survey #1**

## **Standard Survey Report**

**19 May, 2014**



**BAYSWATER**  
**EXPLORATION & PRODUCTION, LLC**

<b>Company:</b>	Bayswater Exploration & Production, LLC	<b>Local Co-ordinate Reference:</b>	Well Booth K-26H
<b>Project:</b>	SEC.23-T7N-R65W	<b>TVD Reference:</b>	WELL @ 4912.0ft (RKB - 21')
<b>Site:</b>	Booth 26 Horizontal Pad Sec.23-T7N-R65W	<b>MD Reference:</b>	WELL @ 4912.0ft (RKB - 21')
<b>Well:</b>	Booth K-26H	<b>North Reference:</b>	True
<b>Wellbore:</b>	Wellbore #1	<b>Survey Calculation Method:</b>	Minimum Curvature
<b>Design:</b>	Wellbore #1	<b>Database:</b>	Landmark

<b>Project</b>	SEC.23-T7N-R65W, Weld County, CO		
<b>Map System:</b>	US State Plane 1983	<b>System Datum:</b>	Mean Sea Level
<b>Geo Datum:</b>	North American Datum 1983		Using Well Reference Point
<b>Map Zone:</b>	Colorado Northern Zone		Using geodetic scale factor

Site	Booth 26 Horizontal Pad Sec.23-T7N-R65W				
Site Position:		Northing:	1,445,201.82ft	Latitude:	40.552221
From:	Lat/Long	Easting:	3,241,841.92ft	Longitude:	-104.629691
Position Uncertainty:	0.0 ft	Slot Radius:	"	Grid Convergence:	0.56 °

Well	Booth K-26H					
Well Position	+N/-S	0.0 ft	Northing:	1,445,012.13 ft	Latitude:	40.551693
	+E/-W	0.0 ft	Easting:	3,242,115.29 ft	Longitude:	-104.628714
Position Uncertainty		0.0 ft	Wellhead Elevation:	ft	Ground Level:	4,891.0 ft

<b>Wellbore</b>	Wellbore #1				
<b>Magnetics</b>	<b>Model Name</b>	<b>Sample Date</b>	<b>Declination (°)</b>	<b>Dip Angle (°)</b>	<b>Field Strength (nT)</b>
	IGRF2010	5/8/2014	8.41	67.09	52,919

<b>Design</b>	Wellbore #1				
<b>Audit Notes:</b>					
<b>Version:</b>	1.0	<b>Phase:</b>	ACTUAL	<b>Tie On Depth:</b>	0.0
<b>Vertical Section:</b>	<b>Depth From (TVD) (ft)</b>	<b>+N/-S (ft)</b>	<b>+E/-W (ft)</b>	<b>Direction (°)</b>	
	0.0	0.0	0.0	174.66	

<b>Survey Program</b>	<b>Date</b>	5/19/2014			
<b>From (ft)</b>	<b>To (ft)</b>	<b>Survey (Wellbore)</b>	<b>Tool Name</b>	<b>Description</b>	
153.0	11,943.0	Survey #1 (Wellbore #1)	MWD	MWD - Standard	

<b>Survey</b>										
<b>Measured Depth (ft)</b>	<b>Inclination (°)</b>	<b>Azimuth (°)</b>	<b>Vertical Depth (ft)</b>	<b>+N/-S (ft)</b>	<b>+E/-W (ft)</b>	<b>Vertical Section (ft)</b>	<b>Dogleg Rate (°/100ft)</b>	<b>Build Rate (°/100ft)</b>	<b>Turn Rate (°/100ft)</b>	
0.0	0.00	0.00	0.0	0.0	0.0	0.0	0.00	0.00	0.00	
1.0	0.00	255.90	1.0	0.0	0.0	0.0	0.46	0.46	0.00	
<b>SHL 16'FNL, 2264'FEL, SEC.26</b>										
153.0	0.70	255.90	153.0	-0.2	-0.9	0.1	0.46	0.46	0.00	
198.0	0.20	245.60	198.0	-0.3	-1.2	0.2	1.12	-1.11	-22.89	
290.0	0.60	75.60	290.0	-0.3	-0.9	0.2	0.87	0.43	-184.78	
382.0	1.00	81.00	382.0	0.0	0.3	0.1	0.44	0.43	5.87	
474.0	1.10	85.90	474.0	0.2	2.0	0.0	0.15	0.11	5.33	
567.0	0.40	59.20	567.0	0.4	3.2	-0.1	0.82	-0.75	-28.71	
659.0	0.50	68.70	659.0	0.7	3.8	-0.3	0.14	0.11	10.33	
710.0	0.50	83.10	710.0	0.8	4.3	-0.4	0.25	0.00	28.24	
834.0	1.30	203.50	833.9	-0.4	4.2	0.8	1.30	0.65	97.10	
929.0	1.20	80.50	928.9	-1.2	4.8	1.7	2.31	-0.11	-129.47	

<b>Company:</b>	Bayswater Exploration & Production, LLC	<b>Local Co-ordinate Reference:</b>	Well Booth K-26H
<b>Project:</b>	SEC.23-T7N-R65W	<b>TVD Reference:</b>	WELL @ 4912.0ft (RKB - 21')
<b>Site:</b>	Booth 26 Horizontal Pad Sec.23-T7N-R65W	<b>MD Reference:</b>	WELL @ 4912.0ft (RKB - 21')
<b>Well:</b>	Booth K-26H	<b>North Reference:</b>	True
<b>Wellbore:</b>	Wellbore #1	<b>Survey Calculation Method:</b>	Minimum Curvature
<b>Design:</b>	Wellbore #1	<b>Database:</b>	Landmark

## Survey

Measured Depth (ft)	Inclination (°)	Azimuth (°)	Vertical Depth (ft)	+N/-S (ft)	+E/-W (ft)	Vertical Section (ft)	Dogleg Rate (°/100ft)	Build Rate (°/100ft)	Turn Rate (°/100ft)
1,024.0	3.70	58.50	1,023.8	0.5	8.4	0.3	2.76	2.63	-23.16
1,119.0	5.90	59.20	1,118.5	4.6	15.2	-3.2	2.32	2.32	0.74
1,215.0	5.80	62.40	1,214.0	9.4	23.7	-7.2	0.36	-0.10	3.33
1,310.0	7.10	47.10	1,308.4	15.6	32.3	-12.6	2.26	1.37	-16.11
1,402.0	6.70	46.90	1,399.7	23.2	40.4	-19.3	0.44	-0.43	-0.22
1,494.0	6.50	49.20	1,491.1	30.2	48.2	-25.6	0.36	-0.22	2.50
1,586.0	6.40	46.90	1,582.5	37.1	55.9	-31.8	0.30	-0.11	-2.50
1,678.0	6.50	41.30	1,674.0	44.6	63.1	-38.5	0.69	0.11	-6.09
1,770.0	6.00	38.10	1,765.4	52.2	69.5	-45.6	0.66	-0.54	-3.48
1,863.0	5.10	56.40	1,858.0	58.4	75.9	-51.0	2.12	-0.97	19.68
1,955.0	6.20	50.10	1,949.5	63.8	83.2	-55.8	1.37	1.20	-6.85
2,047.0	5.30	39.20	2,041.1	70.3	89.7	-61.6	1.53	-0.98	-11.85
2,139.0	5.20	21.30	2,132.7	77.5	93.9	-68.4	1.78	-0.11	-19.46
2,231.0	4.70	40.10	2,224.4	84.2	97.8	-74.8	1.84	-0.54	20.43
2,326.0	4.90	42.50	2,319.0	90.2	103.0	-80.2	0.30	0.21	2.53
2,421.0	5.50	58.50	2,413.6	95.6	109.7	-85.0	1.65	0.63	16.84
2,517.0	6.50	61.20	2,509.1	100.6	118.4	-89.1	1.08	1.04	2.81
2,612.0	5.90	51.50	2,603.6	106.2	126.9	-94.0	1.27	-0.63	-10.21
2,707.0	5.40	36.20	2,698.1	112.9	133.3	-100.0	1.66	-0.53	-16.11
2,802.0	6.50	50.60	2,792.6	119.9	140.1	-106.3	1.94	1.16	15.16
2,898.0	6.10	40.90	2,888.0	127.2	147.7	-112.9	1.18	-0.42	-10.10
2,993.0	7.60	51.10	2,982.3	135.0	155.9	-119.9	2.03	1.58	10.74
3,088.0	7.60	47.50	3,076.5	143.1	165.4	-127.1	0.50	0.00	-3.79
3,183.0	8.00	52.00	3,170.6	151.5	175.2	-134.5	0.77	0.42	4.74
3,278.0	7.20	46.00	3,264.8	159.7	184.7	-141.8	1.19	-0.84	-6.32
3,374.0	6.50	55.50	3,360.1	166.9	193.5	-148.2	1.38	-0.73	9.90
3,469.0	6.50	64.50	3,454.5	172.3	202.8	-152.7	1.07	0.00	9.47
3,564.0	5.80	58.50	3,549.0	177.1	211.8	-156.6	1.00	-0.74	-6.32
3,659.0	5.30	53.30	3,643.5	182.2	219.4	-161.0	0.75	-0.53	-5.47
3,754.0	4.10	61.90	3,738.2	186.5	225.9	-164.6	1.46	-1.26	9.05
3,849.0	3.70	63.40	3,833.0	189.4	231.6	-167.1	0.43	-0.42	1.58
3,945.0	3.60	56.10	3,928.8	192.5	236.9	-169.6	0.49	-0.10	-7.60
4,040.0	3.90	54.70	4,023.6	196.0	242.0	-172.7	0.33	0.32	-1.47
4,135.0	3.80	55.50	4,118.4	199.7	247.2	-175.8	0.12	-0.11	0.84
4,230.0	3.50	59.60	4,213.2	202.9	252.3	-178.6	0.42	-0.32	4.32
4,326.0	3.00	51.00	4,309.0	206.0	256.8	-181.2	0.73	-0.52	-8.96
4,421.0	4.90	55.50	4,403.8	209.9	262.1	-184.6	2.02	2.00	4.74
4,516.0	6.60	61.20	4,498.3	214.8	270.2	-188.7	1.89	1.79	6.00
4,611.0	5.90	62.90	4,592.7	219.6	279.4	-192.7	0.76	-0.74	1.79
4,706.0	5.90	56.40	4,687.2	224.6	287.8	-196.8	0.70	0.00	-6.84
4,802.0	5.80	54.30	4,782.7	230.1	295.8	-201.6	0.25	-0.10	-2.19
4,897.0	6.50	49.40	4,877.2	236.4	303.8	-207.1	0.92	0.74	-5.16
4,992.0	5.50	52.90	4,971.7	242.7	311.5	-212.6	1.12	-1.05	3.68
5,087.0	4.00	53.60	5,066.3	247.4	317.8	-216.8	1.58	-1.58	0.74
5,182.0	3.50	52.40	5,161.1	251.1	322.8	-220.0	0.53	-0.53	-1.26
5,278.0	3.70	68.40	5,257.0	254.1	328.0	-222.4	1.06	0.21	16.67
5,373.0	4.60	76.50	5,351.7	256.1	334.5	-223.8	1.13	0.95	8.53
5,468.0	5.00	58.70	5,446.4	259.1	341.8	-226.2	1.62	0.42	-18.74
5,563.0	5.30	54.30	5,541.0	263.8	348.9	-230.2	0.52	0.32	-4.63
5,659.0	5.00	55.00	5,636.6	268.8	355.9	-234.5	0.32	-0.31	0.73
5,754.0	5.50	48.50	5,731.2	274.2	362.7	-239.3	0.82	0.53	-6.84
5,849.0	6.20	49.70	5,825.7	280.5	370.0	-244.9	0.75	0.74	1.26
5,945.0	4.80	44.60	5,921.3	286.7	376.8	-250.5	1.54	-1.46	-5.31
6,040.0	5.70	46.60	6,015.9	292.8	383.0	-255.9	0.97	0.95	2.11

<b>Company:</b>	Bayswater Exploration & Production, LLC	<b>Local Co-ordinate Reference:</b>	Well Booth K-26H
<b>Project:</b>	SEC.23-T7N-R65W	<b>TVD Reference:</b>	WELL @ 4912.0ft (RKB - 21')
<b>Site:</b>	Booth 26 Horizontal Pad Sec.23-T7N-R65W	<b>MD Reference:</b>	WELL @ 4912.0ft (RKB - 21')
<b>Well:</b>	Booth K-26H	<b>North Reference:</b>	True
<b>Wellbore:</b>	Wellbore #1	<b>Survey Calculation Method:</b>	Minimum Curvature
<b>Design:</b>	Wellbore #1	<b>Database:</b>	Landmark

## Survey

Measured Depth (ft)	Inclination (°)	Azimuth (°)	Vertical Depth (ft)	+N/-S (ft)	+E/-W (ft)	Vertical Section (ft)	Dogleg Rate (°/100ft)	Build Rate (°/100ft)	Turn Rate (°/100ft)
6,135.0	5.20	54.80	6,110.4	298.5	390.0	-261.0	0.97	-0.53	8.63
6,230.0	4.50	60.10	6,205.1	302.9	396.7	-264.7	0.87	-0.74	5.58
6,326.0	4.90	55.00	6,300.8	307.1	403.3	-268.3	0.60	0.42	-5.31
6,373.0	4.00	61.00	6,347.6	309.1	406.4	-269.9	2.15	-1.91	12.77
6,421.0	4.80	116.00	6,395.5	309.0	409.7	-269.5	8.59	1.67	114.58
6,469.0	9.10	129.40	6,443.2	305.7	414.4	-265.8	9.51	8.96	27.92
6,516.0	12.90	138.70	6,489.3	299.4	420.8	-259.0	8.90	8.09	19.79
6,564.0	13.70	155.20	6,536.0	290.2	426.7	-249.3	8.05	1.67	34.38
6,612.0	16.00	167.70	6,582.4	278.6	430.5	-237.3	8.19	4.79	26.04
6,659.0	18.80	177.20	6,627.3	264.7	432.2	-223.3	8.47	5.96	20.21
6,707.0	22.60	178.20	6,672.2	247.7	432.9	-206.4	7.95	7.92	2.08
6,754.0	26.20	177.00	6,715.0	228.3	433.7	-187.0	7.73	7.66	-2.55
6,802.0	31.00	177.20	6,757.1	205.4	434.9	-164.0	10.00	10.00	0.42
6,849.0	35.30	176.10	6,796.4	179.7	436.4	-138.4	9.24	9.15	-2.34
6,897.0	40.10	175.20	6,834.4	150.5	438.6	-109.0	10.07	10.00	-1.88
6,944.0	43.50	174.70	6,869.4	119.3	441.4	-77.7	7.27	7.23	-1.06
6,993.0	46.20	174.90	6,904.2	84.9	444.5	-43.2	5.52	5.51	0.41
7,040.0	48.90	176.10	6,935.9	50.3	447.2	-8.5	6.05	5.74	2.55
7,088.0	51.50	176.80	6,966.6	13.5	449.5	28.4	5.53	5.42	1.46
7,136.0	55.40	177.00	6,995.2	-25.0	451.6	66.9	8.13	8.13	0.42
7,183.0	59.40	178.10	7,020.5	-64.5	453.3	106.4	8.74	8.51	2.34
7,231.0	62.40	178.80	7,043.9	-106.5	454.4	148.3	6.38	6.25	1.46
7,278.0	64.60	180.50	7,064.8	-148.5	454.7	190.2	5.69	4.68	3.62
7,326.0	67.00	181.00	7,084.5	-192.3	454.1	233.7	5.09	5.00	1.04
7,373.0	71.00	181.90	7,101.3	-236.2	453.0	277.3	8.70	8.51	1.91
7,421.0	76.10	179.80	7,114.9	-282.2	452.3	323.0	11.42	10.63	-4.38
7,469.0	81.40	178.10	7,124.3	-329.2	453.2	369.9	11.57	11.04	-3.54
7,517.0	84.50	178.80	7,130.2	-376.8	454.5	417.5	6.62	6.46	1.46
7,562.0	87.10	181.40	7,133.5	-421.7	454.4	462.1	8.16	5.78	5.78
7,603.0	88.90	182.27	7,134.9	-462.7	453.1	502.8	4.88	4.39	2.12
<b>LANDING PT. 465'FNL, 1804'FEL, SEC.26</b>									
7,628.0	90.00	182.80	7,135.1	-487.6	452.0	527.6	4.88	4.39	2.12
7,676.0	91.30	181.90	7,134.6	-535.6	450.0	575.1	3.29	2.71	-1.88
7,770.0	88.90	180.30	7,134.4	-629.6	448.2	668.5	3.07	-2.55	-1.70
7,864.0	89.60	179.40	7,135.7	-723.5	448.4	762.1	1.21	0.74	-0.96
7,959.0	90.00	178.90	7,136.0	-818.5	449.9	856.8	0.67	0.42	-0.53
8,054.0	91.70	178.60	7,134.6	-913.5	451.9	951.6	1.82	1.79	-0.32
8,148.0	90.90	177.30	7,132.5	-1,007.4	455.3	1,045.4	1.62	-0.85	-1.38
8,243.0	90.70	179.40	7,131.1	-1,102.4	458.0	1,140.2	2.22	-0.21	2.21
8,337.0	91.30	180.10	7,129.5	-1,196.3	458.4	1,233.8	0.98	0.64	0.74
8,432.0	91.30	179.10	7,127.3	-1,291.3	459.1	1,328.4	1.05	0.00	-1.05
8,527.0	93.00	179.40	7,123.8	-1,386.2	460.3	1,423.0	1.82	1.79	0.32
8,621.0	90.90	180.00	7,120.6	-1,480.2	460.8	1,516.6	2.32	-2.23	0.64
8,716.0	91.50	178.70	7,118.6	-1,575.1	461.9	1,611.3	1.51	0.63	-1.37
8,810.0	90.00	179.80	7,117.4	-1,669.1	463.1	1,705.0	1.98	-1.60	1.17
8,905.0	90.70	179.10	7,116.8	-1,764.1	464.0	1,799.6	1.04	0.74	-0.74
9,000.0	91.00	179.60	7,115.4	-1,859.1	465.1	1,894.3	0.61	0.32	0.53
9,094.0	91.10	180.30	7,113.6	-1,953.1	465.2	1,987.9	0.75	0.11	0.74
9,189.0	91.80	181.20	7,111.2	-2,048.0	464.0	2,082.3	1.20	0.74	0.95
9,283.0	91.40	180.30	7,108.6	-2,142.0	462.7	2,175.8	1.05	-0.43	-0.96
9,378.0	91.50	180.30	7,106.2	-2,237.0	462.2	2,270.3	0.11	0.11	0.00
9,473.0	91.00	180.30	7,104.1	-2,331.9	461.7	2,364.8	0.53	-0.53	0.00
9,567.0	91.40	181.70	7,102.2	-2,425.9	460.1	2,458.2	1.55	0.43	1.49
9,662.0	90.40	181.20	7,100.7	-2,520.9	457.7	2,552.5	1.18	-1.05	-0.53

<b>Company:</b>	Bayswater Exploration & Production, LLC	<b>Local Co-ordinate Reference:</b>	Well Booth K-26H
<b>Project:</b>	SEC.23-T7N-R65W	<b>TVD Reference:</b>	WELL @ 4912.0ft (RKB - 21')
<b>Site:</b>	Booth 26 Horizontal Pad Sec.23-T7N-R65W	<b>MD Reference:</b>	WELL @ 4912.0ft (RKB - 21')
<b>Well:</b>	Booth K-26H	<b>North Reference:</b>	True
<b>Wellbore:</b>	Wellbore #1	<b>Survey Calculation Method:</b>	Minimum Curvature
<b>Design:</b>	Wellbore #1	<b>Database:</b>	Landmark

## Survey

Measured Depth (ft)	Inclination (°)	Azimuth (°)	Vertical Depth (ft)	+N/-S (ft)	+E/-W (ft)	Vertical Section (ft)	Dogleg Rate (°/100ft)	Build Rate (°/100ft)	Turn Rate (°/100ft)
9,756.0	92.00	181.20	7,098.7	-2,614.8	455.7	2,645.9	1.70	1.70	0.00
9,851.0	90.90	179.60	7,096.3	-2,709.8	455.1	2,740.4	2.04	-1.16	-1.68
9,945.0	91.40	180.30	7,094.4	-2,803.8	455.1	2,833.9	0.92	0.53	0.74
10,041.0	90.10	180.30	7,093.2	-2,899.7	454.6	2,929.5	1.35	-1.35	0.00
10,135.0	90.20	179.30	7,092.9	-2,993.7	455.0	3,023.1	1.07	0.11	-1.06
10,229.0	91.40	178.60	7,091.6	-3,087.7	456.7	3,116.8	1.48	1.28	-0.74
10,324.0	90.50	180.10	7,090.0	-3,182.7	457.8	3,211.5	1.84	-0.95	1.58
10,418.0	91.30	179.30	7,088.5	-3,276.7	458.3	3,305.1	1.20	0.85	-0.85
10,513.0	92.20	180.70	7,085.6	-3,371.6	458.3	3,399.6	1.75	0.95	1.47
10,607.0	91.30	180.90	7,082.8	-3,465.6	457.0	3,493.1	0.98	-0.96	0.21
10,702.0	90.70	180.30	7,081.1	-3,560.6	456.0	3,587.5	0.89	-0.63	-0.63
10,790.0	92.30	180.30	7,078.8	-3,648.5	455.5	3,675.1	1.82	1.82	0.00
10,885.0	91.40	180.30	7,075.7	-3,743.5	455.0	3,769.6	0.95	-0.95	0.00
10,980.0	90.20	179.80	7,074.4	-3,838.5	454.9	3,864.1	1.37	-1.26	-0.53
11,074.0	91.10	179.10	7,073.4	-3,932.4	455.8	3,957.8	1.21	0.96	-0.74
11,168.0	90.60	178.70	7,072.0	-4,026.4	457.6	4,051.5	0.68	-0.53	-0.43
11,263.0	91.70	178.40	7,070.1	-4,121.4	460.0	4,146.3	1.20	1.16	-0.32
11,357.0	90.80	178.60	7,068.0	-4,215.3	462.5	4,240.1	0.98	-0.96	0.21
11,451.0	91.70	178.70	7,066.0	-4,309.3	464.7	4,333.8	0.96	0.96	0.11
11,546.0	90.50	179.60	7,064.1	-4,404.2	466.1	4,428.5	1.58	-1.26	0.95
11,640.0	90.10	181.90	7,063.6	-4,498.2	464.9	4,522.0	2.48	-0.43	2.45
11,735.0	89.70	182.10	7,063.8	-4,593.2	461.6	4,616.2	0.47	-0.42	0.21
11,829.0	90.60	181.60	7,063.6	-4,687.1	458.5	4,709.4	1.10	0.96	-0.53
11,888.0	90.70	181.40	7,062.9	-4,746.1	457.0	4,768.0	0.38	0.17	-0.34
11,943.0	90.70	181.40	7,062.2	-4,801.1	455.6	4,822.6	0.00	0.00	0.00
BHL 465'FSL, 1832'FEL, SEC.26									

Checked By: \_\_\_\_\_ Approved By: \_\_\_\_\_ Date: \_\_\_\_\_