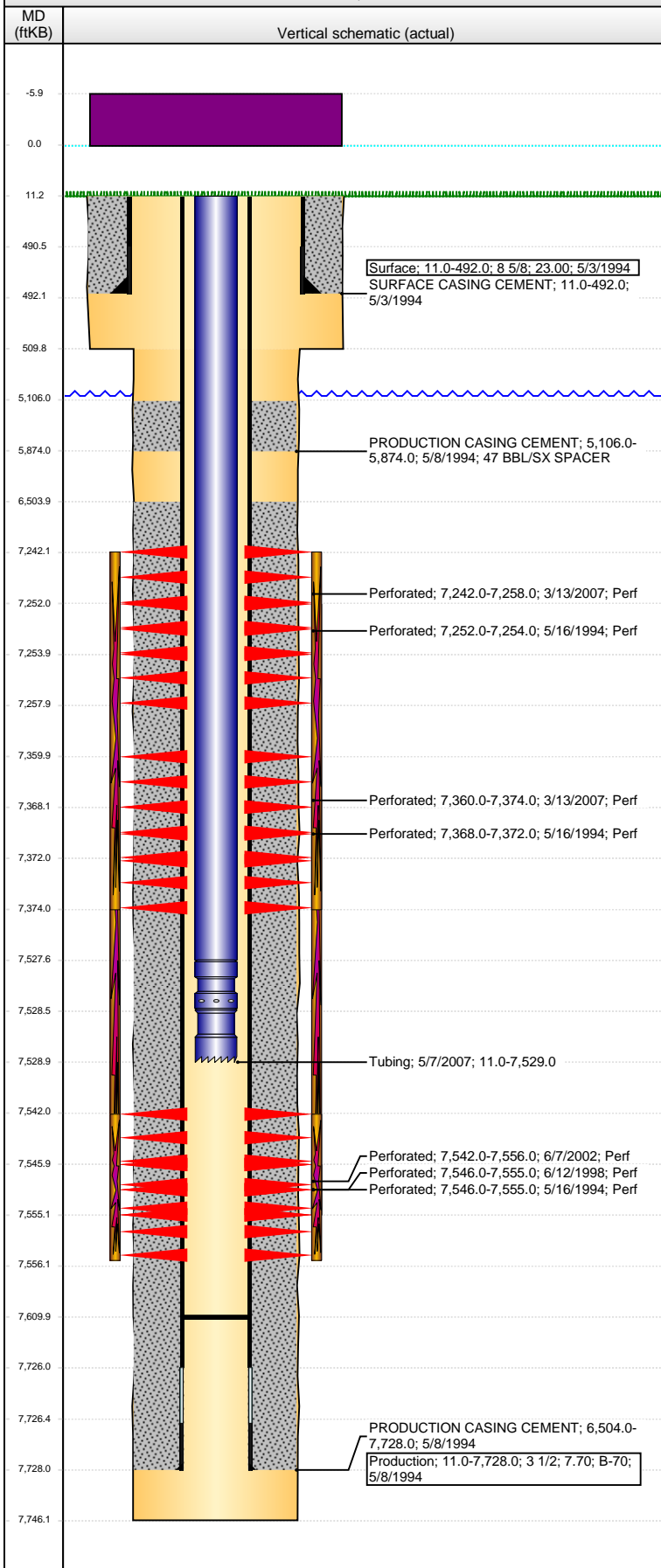


Well Name: UPRC 05-0416

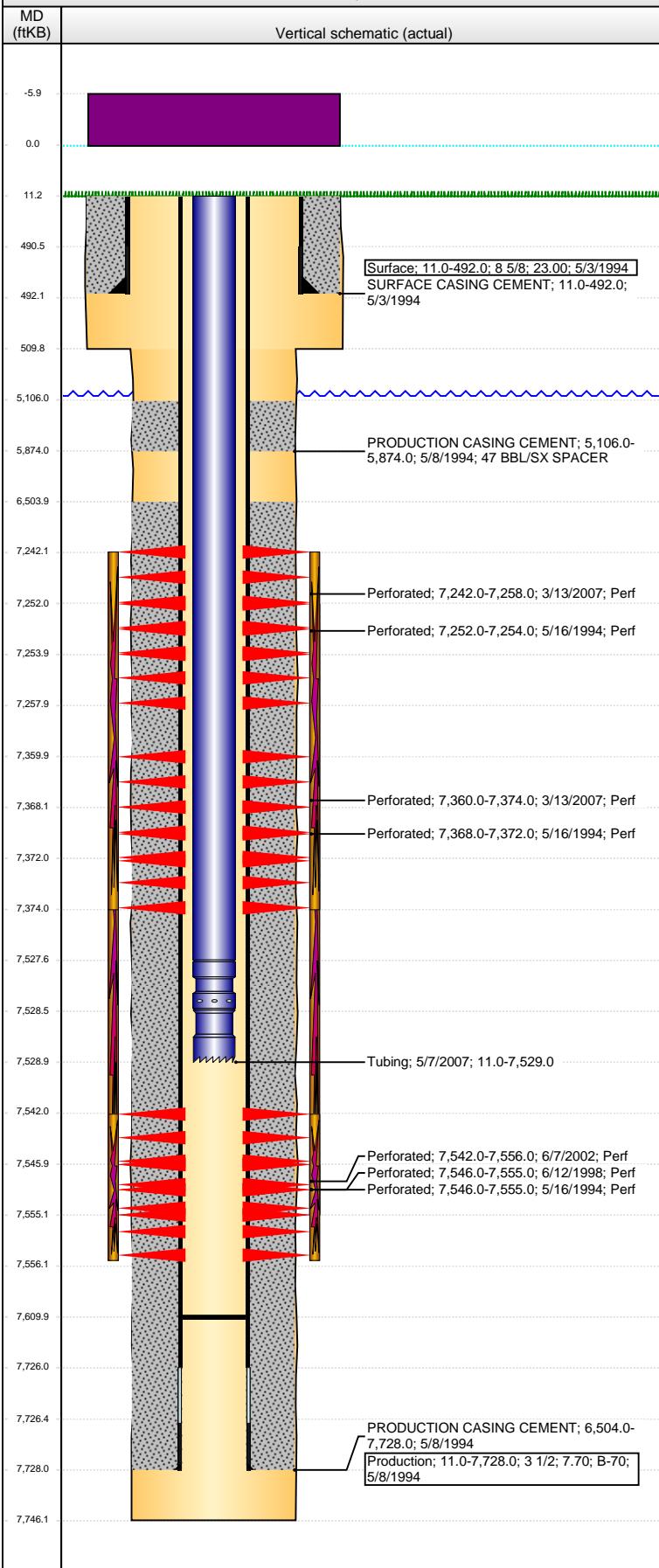
DEVIATED - ORIGINAL HOLE, 11/20/2014 4:27:57 PM



Well Header									
API 05-123-18239		Business Unit DJ BASIN		District 15		Well Config DEVIATED			
Original KB Elevation (ft) 4,763.00		KB - GL / MSL (ftKB) 11.00		Spud Date 5/3/1994		P & A Date			
Comment DIR, 717' FNL & 2113' FWL sfc									
Directions To Well									
Congressional Location									
Quarter 1 NE	Quarter 2 NW	Quarter 3	Quarter 4	Section 5	Township 4 N	Twntshp N...	Range 66	Rng E/W Dir W	
Bottom Hole Location									
North-South Distance (ft)		From N or S Line		East-West Distance (ft)		From E or W Line			
Plug Back Total Depths									
Date	Depth (ftKB)	Method		Com					
5/16/1994	7,639.0	CASED HOLE LOG		DEPTH LOGGER ON CBL					
5/7/2007	7,610.0	TAG		C/O					
Wellbore Sections									
Section Des		Size (in)	Act Top, MD (ftKB)		Act Btm, MD (ftKB)				
SURFACE		12 1/4	11.0		510.0				
PRODUCTION		7 7/8	510.0		7,746.0				
Zone Statuses									
Zone Name	Status Date	Status		Job					
NIOBRARA	6/8/1994	PR		DRILLING/COMPLETION - ORIGINAL, 5/3/1994 00:00					
NIOBRARA	4/17/2007	PR		RE-FRAC, 3/7/2007 00:00					
NIOBRARA	5/9/2007	PR		RE-FRAC, 3/7/2007 00:00					
CODELL	6/8/1994	PR		DRILLING/COMPLETION - ORIGINAL, 5/3/1994 00:00					
CODELL	6/29/1998	PR		RE-FRAC, 6/8/1998 00:00					
CODELL	6/18/2002	PR		TRI-FRAC, 6/5/2002 00:00					
CODELL	3/7/2007	SI		RE-FRAC, 3/7/2007 00:00					
CODELL	5/9/2007	PR		RE-FRAC, 3/7/2007 00:00					
Casing Strings									
Surface, 492.0ftKB									
Casing Description	Run Date	OD (in)	Wv/Len (L...)	Grade	Top, MD (ft...)	MD (ftKB)			
Surface	5/3/1994	8 5/8	23.00		11.0	492.0			
Production, 7,728.0ftKB									
Casing Description	Run Date	OD (in)	Wv/Len (L...)	Grade	Top, MD (ft...)	MD (ftKB)			
Production	5/8/1994	3 1/2	7.70	B-70	11.0	7,728.0			
Cement									
Description					Top Depth (ftKB)		Bottom Depth (ftKB)		
SURFACE CASING CEMENT					11.0		492.0		
Description					Top Depth (ftKB)		Bottom Depth (ftKB)		
PRODUCTION CASING CEMENT					5,106.0		5,874.0		
Description					Top Depth (ftKB)		Bottom Depth (ftKB)		
PRODUCTION CASING CEMENT					6,504.0		7,728.0		
Tubing Components									
Item Des	OD (in)	Wt (lb/ft)	Grade	Jts	Len (ft)	Btm (ftKB)	Btm (TVD) (ftKB)		
Tubing	2 1/16	3.25	J-55	241	7,516.50	7,527.5			
Pump Seating Nipple	2 1/16				1.00	7,528.5			
Notched collar	2 1/16				0.50	7,529.0			
Perforation Data									
Zone	Bnch/St g	Entered Shot Total		Top (ftKB)	Btm (ftKB)	Date			
NIOBRARA, ORIGINAL HOLE		96		7,242.00	7,258.00	3/13/2007			
NIOBRARA, ORIGINAL HOLE	C	2		7,252.00	7,254.00	5/16/1994			
NIOBRARA, ORIGINAL HOLE		84		7,360.00	7,374.00	3/13/2007			
NIOBRARA, ORIGINAL HOLE	B	4		7,368.00	7,372.00	5/16/1994			
CODELL, ORIGINAL HOLE		56		7,542.00	7,556.00	6/7/2002			
CODELL, ORIGINAL HOLE		9		7,546.00	7,555.00	5/16/1994			
CODELL, ORIGINAL HOLE		20		7,546.00	7,555.00	6/12/1998			

Well Name: UPRC 05-0416

DEVIATED - ORIGINAL HOLE, 11/20/2014 4:27:59 PM



Stimulations & Treatments

Date	5/23/1994	Zone	NIORARA-CODELL, ORIGINAL HOLE	Primary Job Type	DRILLING/COMPLETION - ORIGINAL
Technical Result		Tech Result Details		Tech Result Note	
Comment					
LIMITED ENTRY					
Date	6/17/1998	Zone	CODELL, ORIGINAL HOLE	Primary Job Type	RE-FRAC
Technical Result		Tech Result Details		Tech Result Note	
Comment					
Date	6/17/2002	Zone	CODELL, ORIGINAL HOLE	Primary Job Type	TRI-FRAC
Technical Result		Tech Result Details		Tech Result Note	
Comment					
Date	4/16/2007	Zone	NIORARA, ORIGINAL HOLE	Primary Job Type	RE-FRAC
Technical Result		Tech Result Details		Tech Result Note	
Comment					

Other In Hole				
Run Date	Des	OD (in)	Top (ftKB)	Btm (ftKB)

Logs				
Date	Type	Top, MD (ftKB)	Btm, MD (ftKB)	
5/8/1994	INDUCTION	492.0	7,654.0	
5/16/1994	CEMENT BOND	5,000.0	7,634.0	