

1625 Broadway
Suite 2000
Denver, CO 80202

Tel: 303.228.4000
Fax: 303.228.4280
www.nobleenergyinc.com



November 19, 2014

Colorado Oil and Gas Conservation Commission
The Chancery Building
1120 Lincoln Street, Suite 801
Denver, CO 80203
Attn: Mr. Matt Lepore, Director

RE: Aggie State AA17-623
Section 17: Township 6 North, Range 63 West, 6th P.M.
Weld County, Colorado

Dear Director:

Noble Energy, Inc. ("NEI") is planning to drill the captioned boundary well in accordance with the provisions of COGCC Rule 318A.e.

NEI's proposed wellbore spacing unit consists of the Sec 16: SW/4SW/4, Sec 17: S/2S/2, T6N, R63W, creating a 200-acre wellbore spacing unit for the Niobrara formation. NEI is the only owner within the proposed wellbore spacing unit, therefore NEI hereby attests that no notice letters are required under COGCC Rule 318A(l).e.(6).

Enclosed are copies of the following documents to assist you in your review and approval of NEI's proposed APD for the captioned well:

- Map & plat illustrating proposed wellbore spacing unit.

Thank you for your attention to the enclosed. NEI respectfully requests that the COGCC review the enclosed information and approve the Application for Permit to Drill the captioned well.

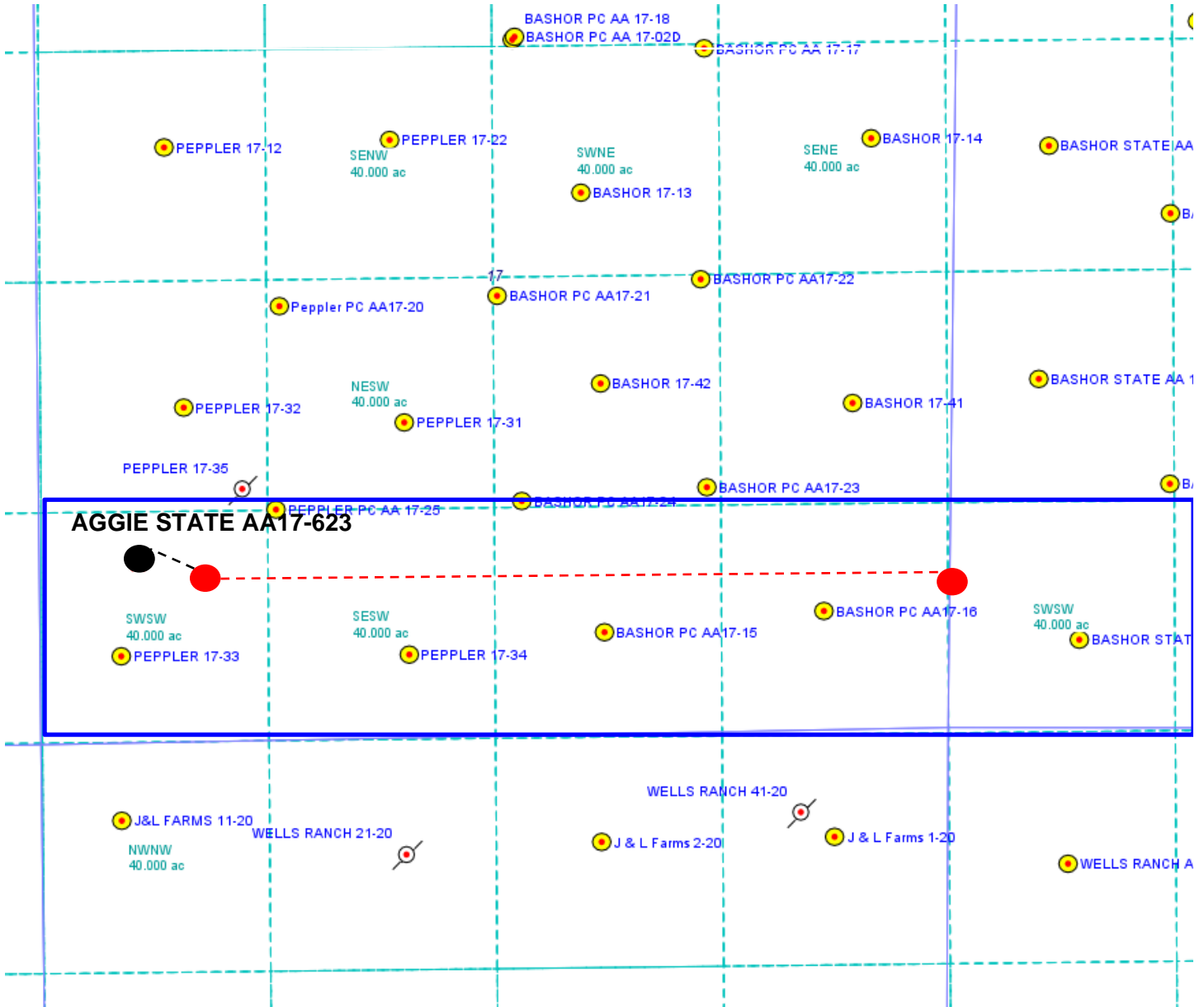
Sincerely,

Justin Garrett
Regulatory Analyst II
Noble Energy Inc.

Aggie State AA17-623

Proposed Spacing Unit – Noble Energy, Inc

S/2S/2 Section 17, Township 6 North, Range 63 West
SW/4SW/4 Section 16, Township 6 North, Range 63 West



Legend



Proposed 200.00± acre spacing unit



Bottom Hole Location

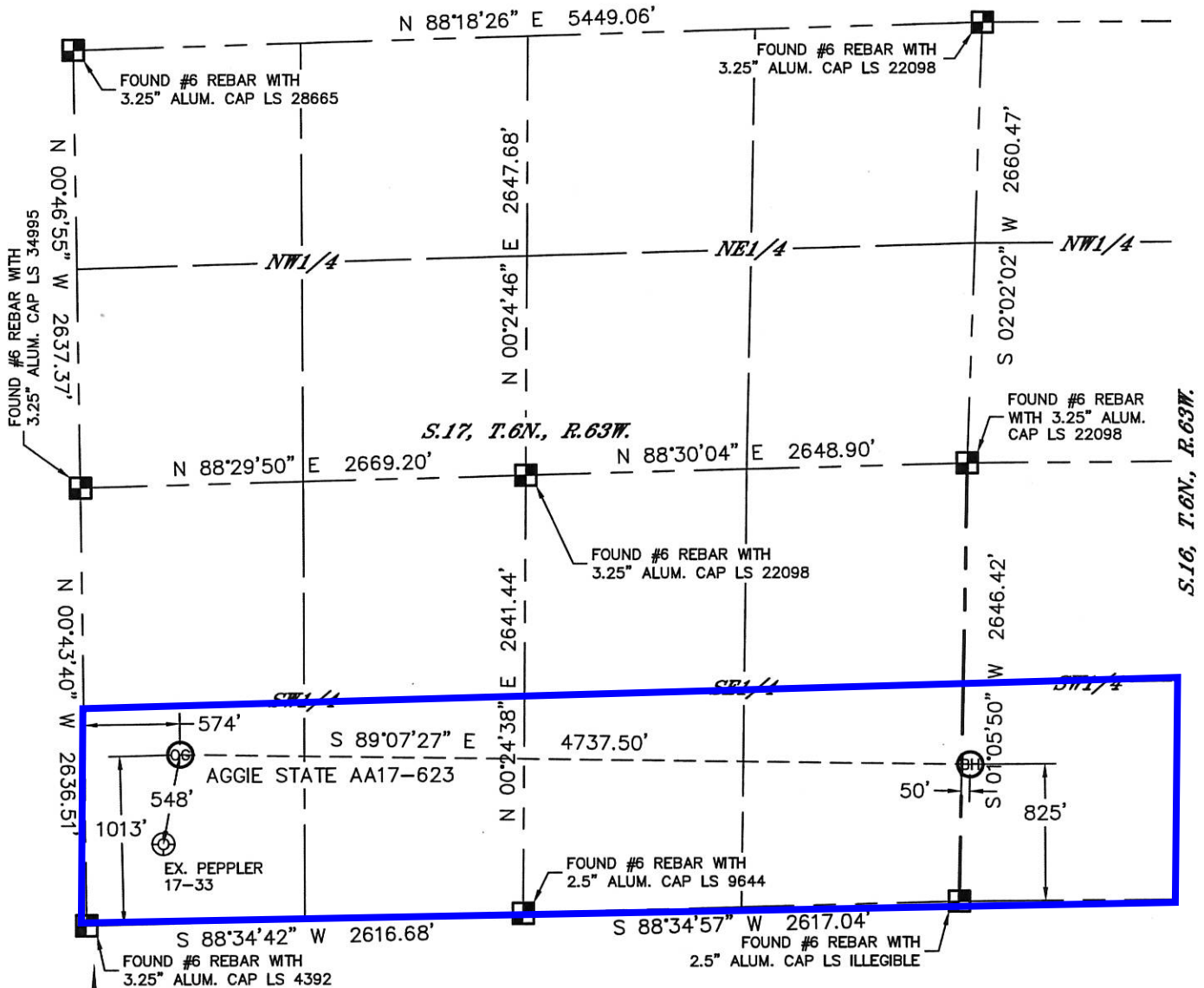


Lat40°, Inc. 6250 W. 10th Street, Unit 2, Greeley, CO 970-515-5294

WELL LOCATION CERTIFICATE

THIS MAP DOES NOT REPRESENT A BOUNDARY SURVEY

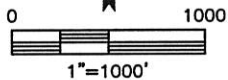
SECTION: 17
TOWNSHIP: 6N
RANGE: 63W



In accordance with a request from Greg Wilson with Noble Energy Inc.

Lat40°, Inc. has determined the surface location of the AGGIE STATE AA17-623 to be 1013' from the SOUTH line and 574' from the WEST line as measured at right angles from the section lines of Section 17, Township 6 North, Range 63 West and the bottom hole to be 825' from the SOUTH line and 50' from the WEST line as measured at right angles from the section lines of Section 16, Township 6 North, Range 63 West of the Sixth Principal Meridian, County of Weld, State of Colorado.

I hereby state that this Well Location Certificate was prepared by me, or under my direct supervision, that the fieldwork was completed on 7/24/2014, for and on behalf of Noble Energy Inc. That this is not a Land Survey Plat or an Improvement Survey Plat, and that it is not to be relied upon for establishment of fence, building, or other future improvement lines.



NOTE:

- 1) Bearings shown are Grid Bearings of the Colorado State Plane Coordinate System, North Zone, North American Datum 1983. The lined dimensions as contained herein are based upon the "U.S. Survey Foot."
 - 2) Ground elevations are based on an observed GPS elevation (NAVD 1988 DATUM).
 - 3) IMPROVEMENTS: See LOCATION DRAWING for all visible improvements within 500' of disturbed area.
 - 4) SURFACE USE: CROP LAND
 - 5) INSTRUMENT OPERATOR: WYATT HALL
 - 6) NEAREST EXISTING WELL: PEPPLER 17-33, ±548' SW
- NEAREST CULTURAL ITEMS:
BUILDING: ±1352' SW
BUILDING UNIT: ±1352' SW
HIGH OCCUPANCY BUILDING UNIT: 5280'+
DESIGNATED OUTSIDE ACTIVITY AREA: 5280'+
PUBLIC ROAD: ±1000' S (CR 68)
ABOVEGROUND UTILITY: ±1001' SW
RAILROAD: 5280'+
PROPERTY LINE: ±574' W

SURFACE LOCATION
LAT: 40.48205°N
LONG: 104.46826°W
PDOP: 1.7
ELEV: 4666'
1/4, 1/4: SWSW

BOTTOM HOLE
LAT: 40.48170°N
LONG: 104.45124°W

LEGEND

- = ALIQUOT MONUMENT AS DESCRIBED
○ = CALCULATED POSITION

SHEET 1 OF 2

Kyle E. Rutz-On behalf of Noble Energy Inc.
Colorado Licensed Professional Land Surveyor No. 38307
DATE: 8/22/2014
PROJECT#: 2013082



