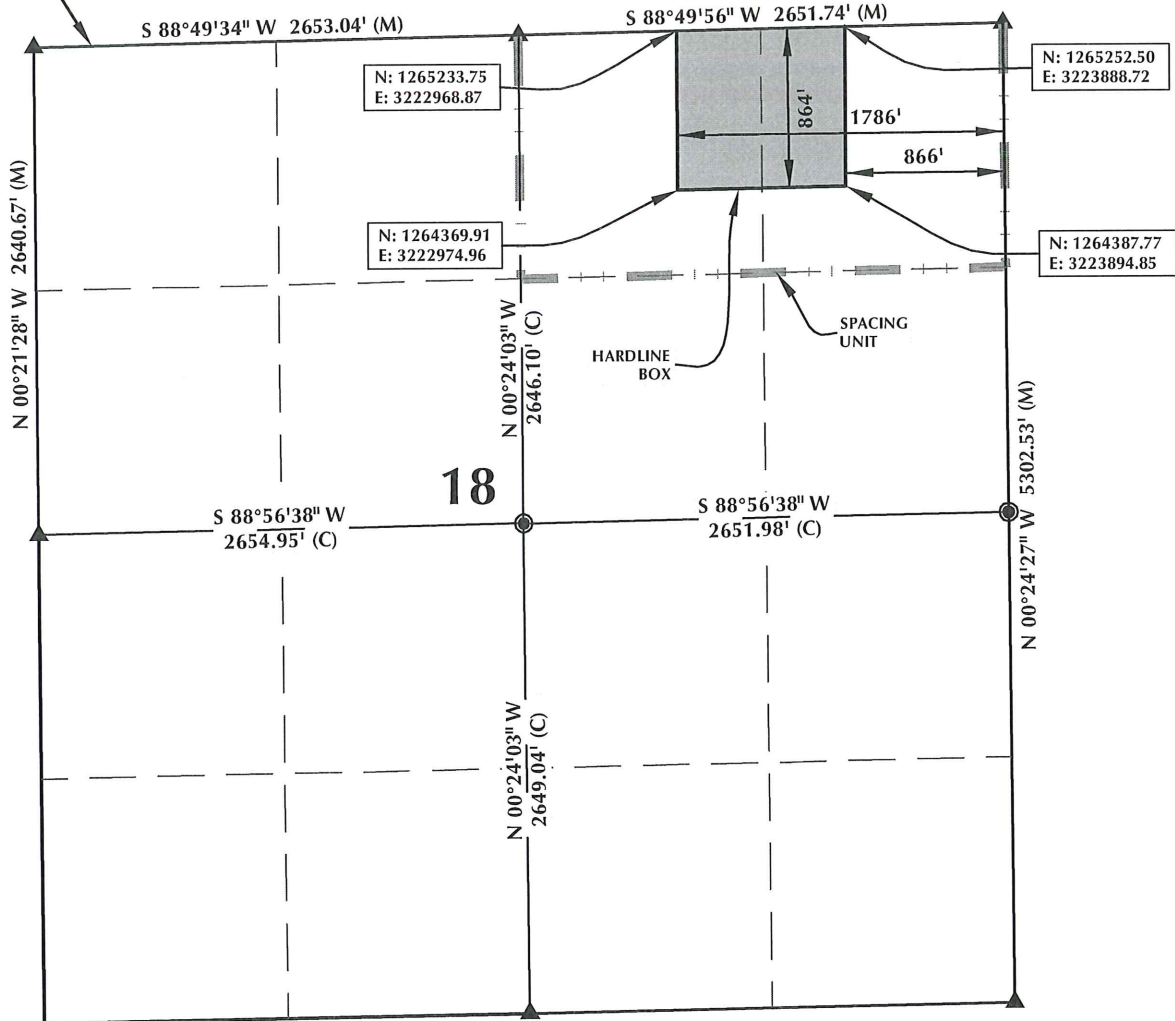


# GOODIN 37N-B6HZ T1N, R65W

MATCH LINE  
SEE SHEET 1



## HEEL LOCATION

NAD 83  
N: 1,265,345.17'  
E: 3,223,528.11'

LATITUDE= 40.058999°  
LONGITUDE= -104.701421°

LATITUDE= 40°03'32.396"  
LONGITUDE= -104°42'05.117"

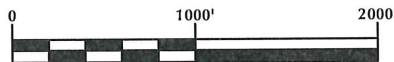
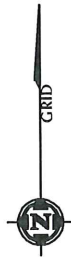
AVAILABLE FOOTAGE  
7021'

## BOTTOM HOLE LOCATION

NAD 83  
N: 1,271,036.46'  
E: 3,223,416.48'

LATITUDE= 40.074625°  
LONGITUDE= -104.701637°

LATITUDE= 40°04'28.648"  
LONGITUDE= -104°42'05.893"



SCALE: 1" = 1000'

## NOTES:

1. ▲ INDICATES FOUND SECTION CORNER
2. ● INDICATES CALCULATED CORNER
3. BASIS OF BEARING DERIVED FROM COLORADO COORDINATE SYSTEM 1983 NORTH ZONE UNLESS OTHERWISE NOTED.
4. DRAWING NORTHING / EASTING COORDINATES ARE BASED ON COLORADO COORDINATE SYSTEM 1983 NORTH ZONE UNLESS OTHERWISE NOTED.
5. COMBINED SCALE FACTOR: .99972680
6. THIS EXHIBIT DOES NOT REPRESENT A LAND SURVEY PLAT OR IMPROVEMENT SURVEY PLAT AS DEFINED BY C.R.S. 38-51-102 AND CANNOT BE RELIED UPON TO DETERMINE OWNERSHIP.

## WELL PAD - GOODIN 37N-B6HZ

GOODIN 37N-B6HZ  
SPACING UNIT EXHIBIT  
100' FSL & 1224' FEL SESE (HEEL)  
LOCATED IN SECTION 7  
500' FSL & 1224' FEL SESE (BOTTOM)  
LOCATED IN SECTION 6  
T1N, R65W, 6TH P.M.  
WELD COUNTY, COLORADO

Kerr-McGee Oil &  
Gas Onshore L.P.  
1099 18th Street  
Denver, Colorado 80202



## CONSULTING, LLC

SHERIDAN OFFICE  
2155 North Main Street  
Sheridan, Wyoming 82801  
Phone 307-674-0609

LOVELAND OFFICE  
1635 Foxtrail Drive, Suite 204  
Loveland, Colorado 80538  
Phone 970-776-4331

DRAFTED BY: LMO	CHECKED BY: BJR	SHEET NO:
DATE DRAFTED: 7/25/14	DATE SURVEYED: 7/10/14	3
REVISED: 9/2/14	FILE NAME: 14-28	3 OF 3