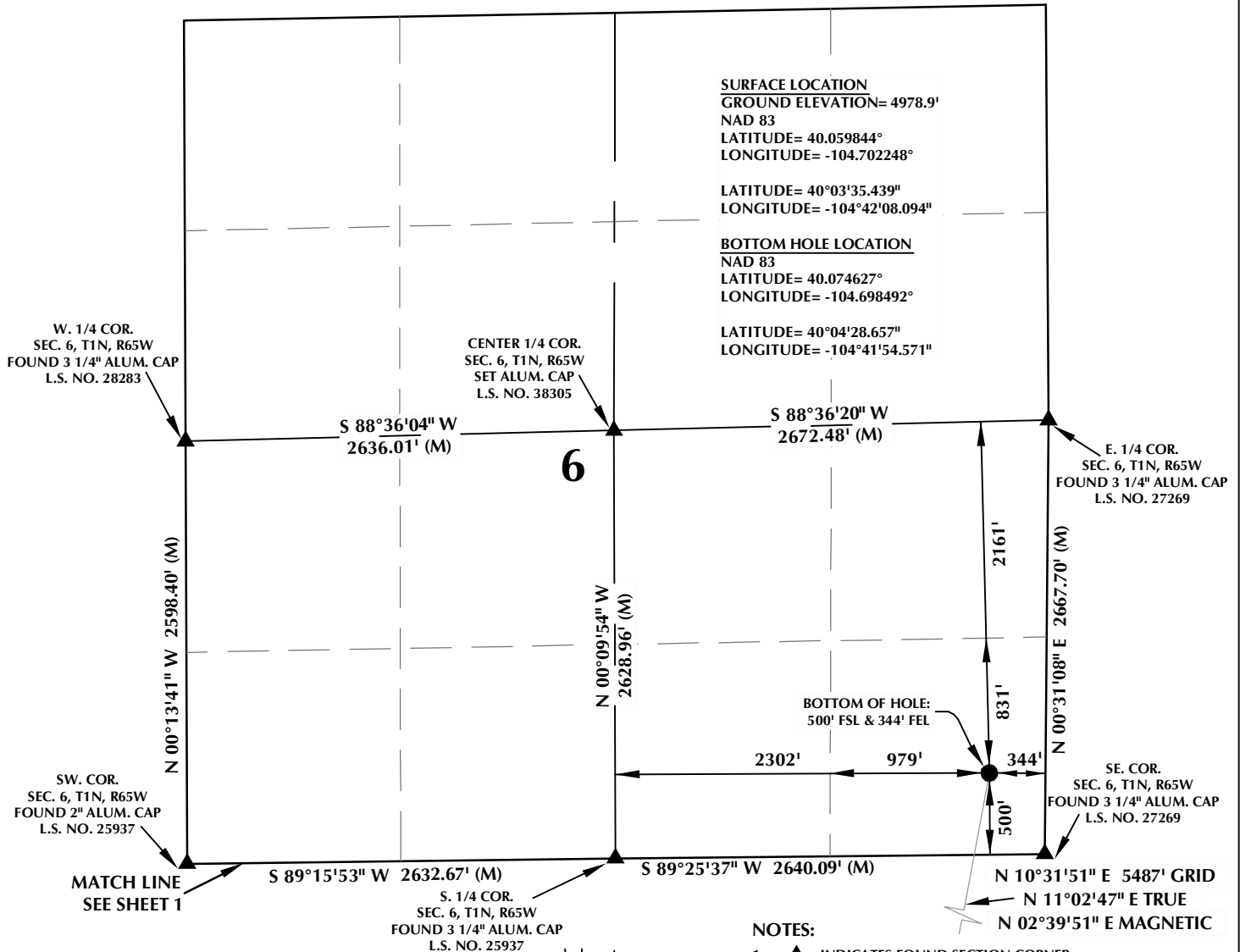


T1N, R65W



CERTIFICATE OF SURVEYOR:

THIS IS TO CERTIFY THAT THE ABOVE PLAT WAS PREPARED FROM FIELD NOTES OF ACTUAL SURVEY MADE BY ME OR UNDER MY SUPERVISION AND THAT THE SAME ARE TRUE AND CORRECT TO THE BEST OF MY KNOWLEDGE AND BELIEF. THIS CERTIFICATE DOES NOT REPRESENT A LAND SURVEY PLAT OR IMPROVEMENT SURVEY PLAT AS DEFINED BY C.S. 38-51-102 AND CANNOT BE RELIED UPON TO DETERMINE OWNERSHIP.

Benjamin J. Reenders
BENJAMIN J. REENDERS
PROFESSIONAL LAND SURVEYOR
COLORADO REGISTRATION NUMBER 4836
7/25/14

NOTICE:
ACCORDING TO COLORADO STATE LAW YOU MUST COMMENCE ANY LEGAL ACTION BASED UPON ANY DEFECT IN THIS SURVEY WITHIN THREE YEARS AFTER YOU FIRST DISCOVER SUCH DEFECT. IN NO EVENT MAY ANY ACTION BASED UPON ANY DEFECT IN THIS SURVEY BE COMMENCED MORE THAN TEN YEARS FROM THE DATE ON THE CERTIFICATION SHOWN HEREON.

NOTE:
MAGNETIC NORTH IS CURRENT AS OF 7/21/2014.
MAGNETIC NORTH CHANGES WEST 0°08' PER YEAR.

WELL PAD - GOODIN 37N-B6HZ

GOODIN 38N-A6HZ
WELL LOCATION CERTIFICATE
411' FSL & 1450' FEL SWSE (SURFACE)
LOCATED IN SECTION 7
500' FSL & 344' FEL SESE (BOTTOM)
LOCATED IN SECTION 6
T1N, R65W, 6TH P.M.
WELD COUNTY, COLORADO

**Kerr-McGee Oil &
Gas Onshore L.P.**
1099 18th Street
Denver, Colorado 80202



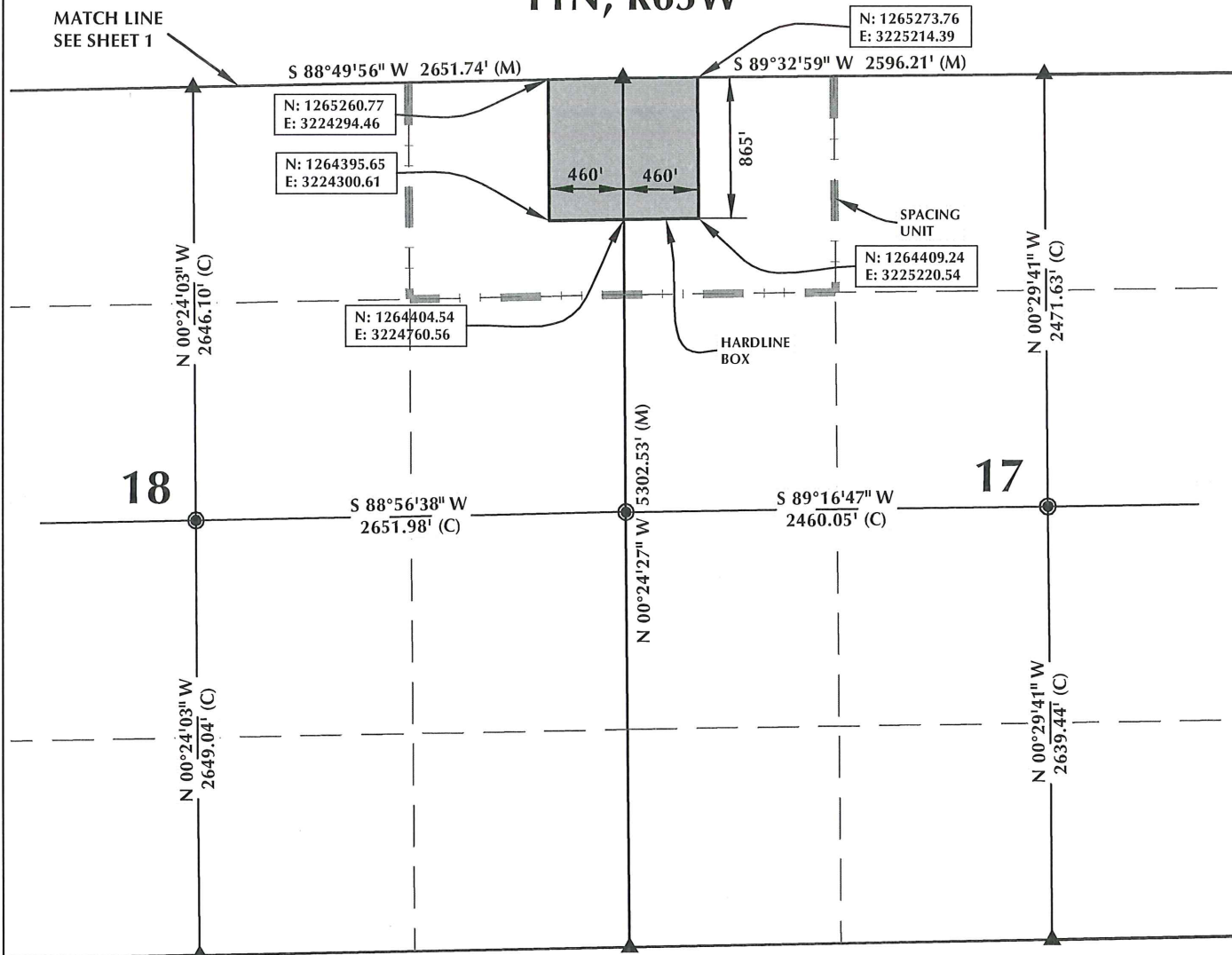
CONSULTING, LLC

SHERIDAN OFFICE
2155 North Main Street
Sheridan, Wyoming 82801
Phone 307-674-0609

LOVELAND OFFICE
1635 Foxtrail Drive, Suite 204
Loveland, Colorado 80538
Phone 970-776-4331

DRAFTED BY:	LMO	CHECKED BY:	BJR	SHEET NO:
DATE DRAFTED:	7/25/14	DATE SURVEYED:	7/10/14	2
REVISED:		FILE NAME:	14-28	2 OF 2

GOODIN 38N-A6HZ T1N, R65W



HEEL LOCATION

NAD 83

N: 1,265,363.11'

E: 3,224,407.94'

LATITUDE= 40.059026°

LONGITUDE= -104.698278°

LATITUDE= 40°03'32.495"

LONGITUDE= -104°41'53.800"

AVAILABLE FOOTAGE

7019'

BOTTOM HOLE LOCATION

NAD 83

N: 1,271,045.26'

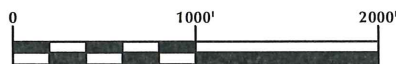
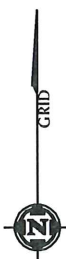
E: 3,224,296.60'

LATITUDE= 40.074627°

LONGITUDE= -104.698492°

LATITUDE= 40°04'28.657"

LONGITUDE= -104°41'54.571"



SCALE: 1" = 1000'

NOTES:

1. ▲ INDICATES FOUND SECTION CORNER
2. ● INDICATES CALCULATED CORNER
3. BASIS OF BEARING DERIVED FROM COLORADO COORDINATE SYSTEM 1983 NORTH ZONE UNLESS OTHERWISE NOTED.
4. DRAWING NORTHING / EASTING COORDINATES ARE BASED ON COLORADO COORDINATE SYSTEM 1983 NORTH ZONE UNLESS OTHERWISE NOTED.
5. COMBINED SCALE FACTOR: .99972680
6. THIS EXHIBIT DOES NOT REPRESENT A LAND SURVEY PLAT OR IMPROVEMENT SURVEY PLAT AS DEFINED BY C.R.S. 38-51-102 AND CANNOT BE RELIED UPON TO DETERMINE OWNERSHIP.

WELL PAD - GOODIN 37N-B6HZ

GOODIN 38N-A6HZ
SPACING UNIT EXHIBIT
100' FSL & 344' FEL SESE (HEEL)
LOCATED IN SECTION 7
500' FSL & 344' FEL SESE (BOTTOM)
LOCATED IN SECTION 6
T1N, R65W, 6TH P.M.
WELD COUNTY, COLORADO

Kerr-McGee Oil &
Gas Onshore L.P.
1099 18th Street
Denver, Colorado 80202



CONSULTING, LLC

SHERIDAN OFFICE
2155 North Main Street
Sheridan, Wyoming 82801
Phone 307-674-0609

LOVELAND OFFICE
1635 Foxtrail Drive, Suite 204
Loveland, Colorado 80538
Phone 970-776-4331

DRAFTED BY: LMO	CHECKED BY: BJR	SHEET NO:
DATE DRAFTED: 7/25/14	DATE SURVEYED: 7/10/14	3
REVISED: 9/2/14	FILE NAME: 14-28	3 OF 3