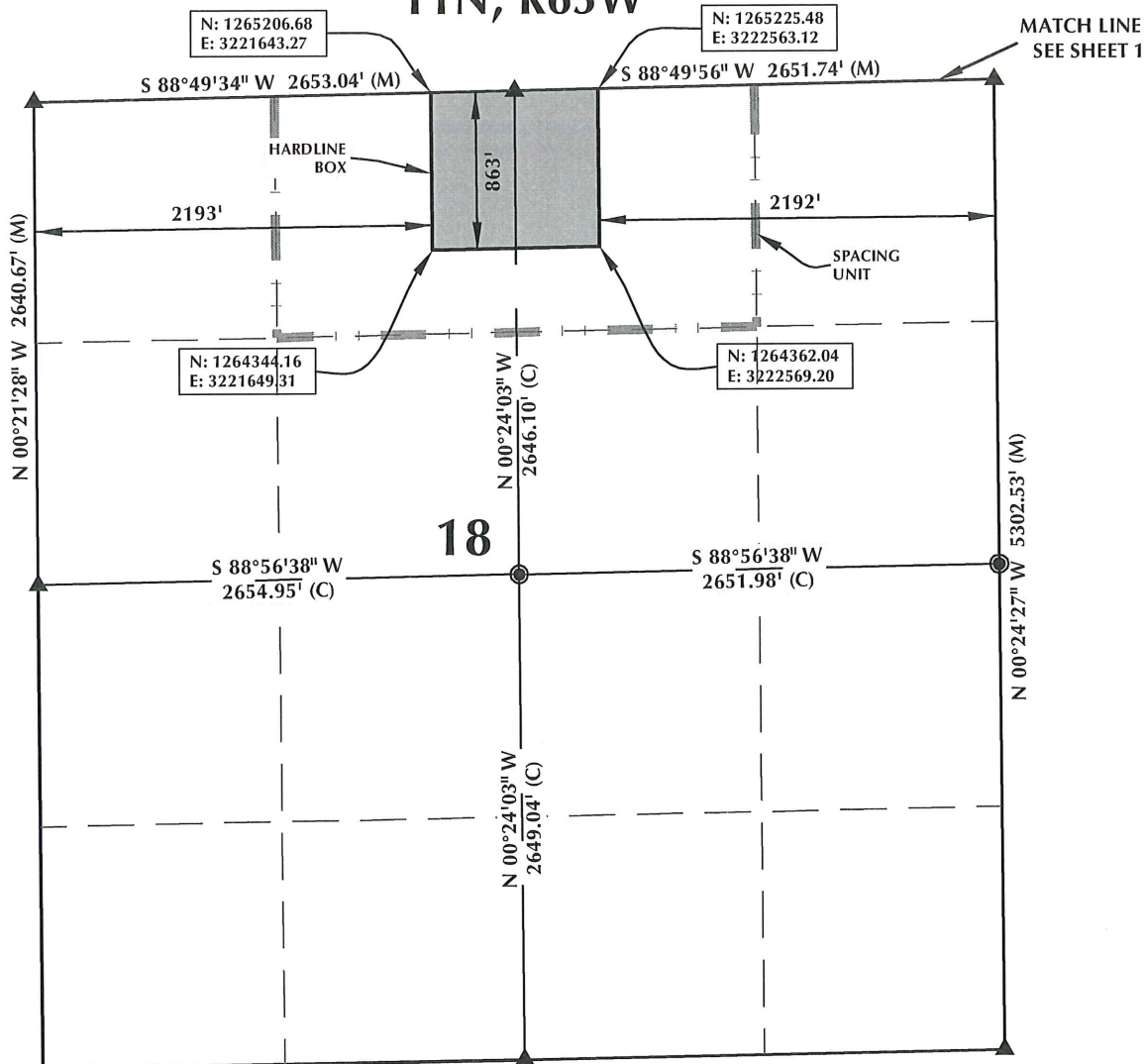


GOODIN 36N-A6HZ T1N, R65W



HEEL LOCATION

NAD 83

N: 1,265,322.75'

E: 3,222,428.32'

LATITUDE= 40.058964°
LONGITUDE= -104.705351°

LATITUDE= 40°03'32.272\"/>

AVAILABLE FOOTAGE
7024'

BOTTOM HOLE LOCATION

NAD 83

N: 1,271,025.46'

E: 3,222,316.34'

LATITUDE= 40.074621°
LONGITUDE= -104.705568°

LATITUDE= 40°04'28.637\"/>



SCALE: 1" = 1000'

NOTES:

1. ▲ INDICATES FOUND SECTION CORNER
2. ● INDICATES CALCULATED CORNER
3. BASIS OF BEARING DERIVED FROM COLORADO COORDINATE SYSTEM 1983 NORTH ZONE UNLESS OTHERWISE NOTED.
4. DRAWING NORTHING / EASTING COORDINATES ARE BASED ON COLORADO COORDINATE SYSTEM 1983 NORTH ZONE UNLESS OTHERWISE NOTED.
5. COMBINED SCALE FACTOR: .99972680
6. THIS EXHIBIT DOES NOT REPRESENT A LAND SURVEY PLAT OR IMPROVEMENT SURVEY PLAT AS DEFINED BY C.R.S. 38-51-102 AND CANNOT BE RELIED UPON TO DETERMINE OWNERSHIP.

WELL PAD - GOODIN 37N-B6HZ

GOODIN 36N-A6HZ
SPACING UNIT EXHIBIT
100' FSL & 2324' FEL SWSE (HEEL)
LOCATED IN SECTION 7
500' FSL & 2324' FEL SWSE (BOTTOM)
LOCATED IN SECTION 6
T1N, R65W, 6TH P.M.
WELD COUNTY, COLORADO

Kerr-McGee Oil &
Gas Onshore L.P.
1099 18th Street
Denver, Colorado 80202



CONSULTING, LLC

SHERIDAN OFFICE
2155 North Main Street
Sheridan, Wyoming 82801
Phone 307-674-0609

LOVELAND OFFICE
1635 Foxtrail Drive, Suite 204
Loveland, Colorado 80538
Phone 970-776-4331

DRAFTED BY: LMO	CHECKED BY: BJR	SHEET NO: 3
DATE DRAFTED: 7/25/14	DATE SURVEYED: 7/10/14	3 OF 3
REVISED: 9/1/14	FILE NAME: 14-28	