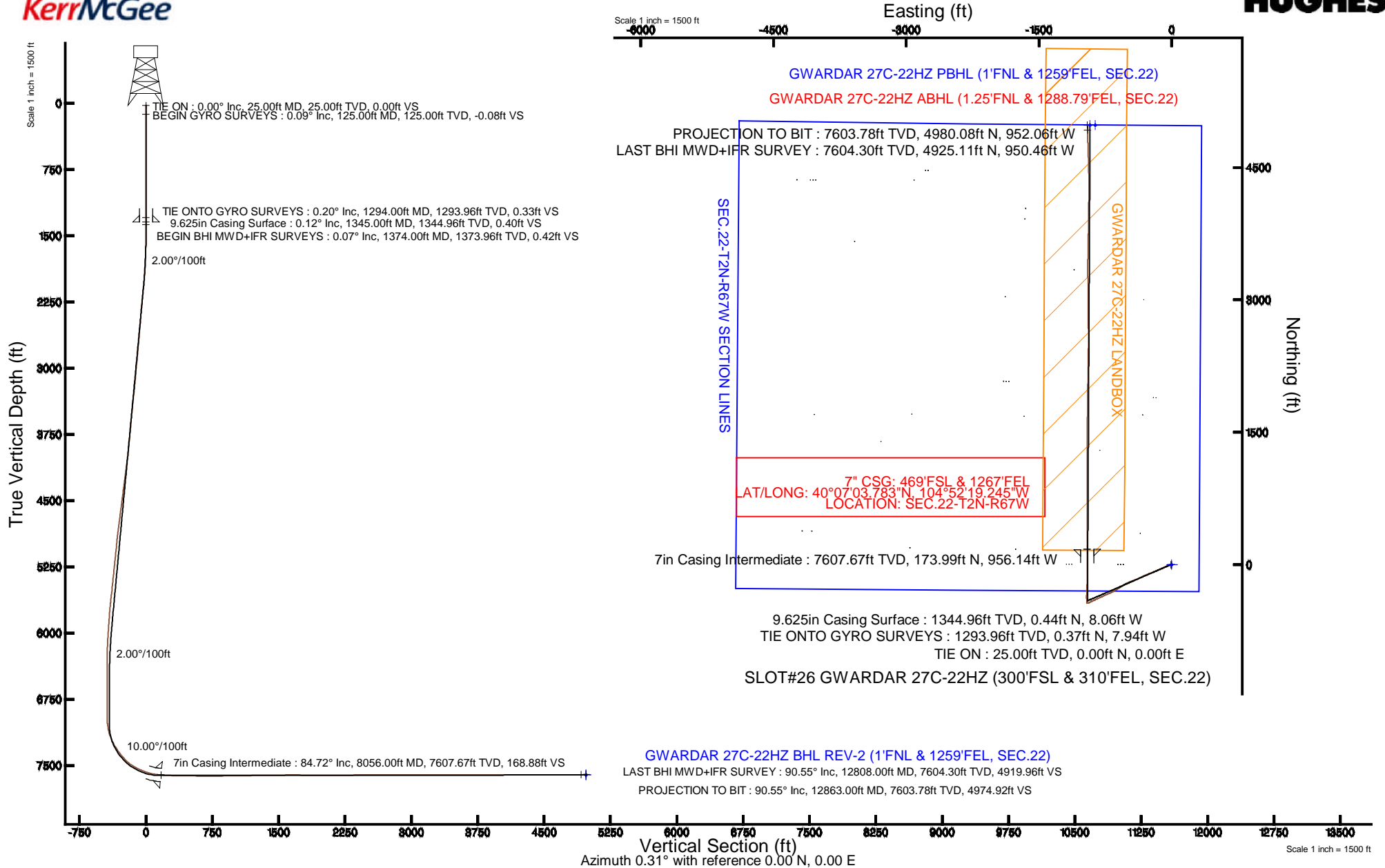


KERR-MCGEE OIL & GAS ONSHORE LP

Location: COLORADO Slot: SLOT#26 GWARDAR 27C-22HZ (300'FSL & 310'FEL, SEC.22)
 Field: WELD COUNTY (KERR MCGEE) Well: GWARDAR 27C-22HZ
 Facility: SEC.22-T2N-R67W Wellbore: GWARDAR 27C-22HZ PWB

Plot reference wellpath is GWARDAR 27C-22HZ (REV-A.0) PWP

True vertical depths are referenced to H&P 307 (25KB) (RKB)	Grid System: NAD83 / Lambert Colorado SP, Northern Zone (501), US feet
Measured depths are referenced to H&P 307 (25KB) (RKB)	North Reference: True north
H&P 307 (25KB) (RKB) to Mean Sea Level: 5003 feet	Scale: True distance
Mean Sea Level to Mud line (At Slot: SLOT#26 GWARDAR 27C-22HZ (300'FSL & 310'FEL, SEC.22)): 0 feet	Depths are in feet
Coordinates are in feet referenced to Slot	Created by: robiale01 on 9/25/2014





Actual Wellpath Report

GWARDAR 27C-22HZ AWP

Page 1 of 6



REFERENCE WELLPATH IDENTIFICATION			
Operator	KERR-MCGEE OIL & GAS ONSHORE LP	Slot	SLOT#26 GWARDAR 27C-22HZ (300'FSL & 310'FEL, SEC.22)
Area	COLORADO	Well	GWARDAR 27C-22HZ
Field	WELD COUNTY (KERR MCGEE)	Wellbore	GWARDAR 27C-22HZ AWB
Facility	SEC.22-T2N-R67W		

REPORT SETUP INFORMATION			
Projection System	NAD83 / Lambert Colorado SP, Northern Zone (501), US feet	Software System	WellArchitect® 4.0.0
North Reference	True	User	Robiale01
Scale	0.99996	Report Generated	9/24/2014 at 4:32:13 PM
Convergence at slot	n/a	Database/Source file	WellArchitectDB/GWARDAR_27C-22HZ_AWB.xml

WELLPATH LOCATION						
	Local coordinates		Grid coordinates		Geographic coordinates	
	North[ft]	East[ft]	Easting[US ft]	Northing[US ft]	Latitude	Longitude
Slot Location	-4466.50	2783.72	3176585.10	1286183.26	40°07'02.064"N	104°52'06.938"W
Facility Reference Pt			3173770.27	1290629.95	40°07'46.204"N	104°52'42.769"W
Field Reference Pt			3197771.84	1268891.29	40°04'09.600"N	104°47'36.000"W

WELLPATH DATUM			
Calculation method	Minimum curvature	H&P 307 (25'KB) (RKB) to Facility Vertical Datum	5003.00ft
Horizontal Reference Pt	Slot	H&P 307 (25'KB) (RKB) to Mean Sea Level	5003.00ft
Vertical Reference Pt	H&P 307 (25'KB) (RKB)	H&P 307 (25'KB) (RKB) to Mud Line at Slot (SLOT#26 GWARDAR 27C-22HZ (300'FSL & 310'FEL, SEC.22))	5003.00ft
MD Reference Pt	H&P 307 (25'KB) (RKB)	Section Origin	N 0.00, E 0.00 ft
Field Vertical Reference	Mean Sea Level	Section Azimuth	349.18°

REFERENCE WELLPATH IDENTIFICATION			
Operator	KERR-MCGEE OIL & GAS ONSHORE LP	Slot	SLOT#26 WARDAR 27C-22HZ (300'FSL & 310'FEL, SEC.22)
Area	COLORADO	Well	WARDAR 27C-22HZ
Field	WELD COUNTY (KERR MCGEE)	Wellbore	WARDAR 27C-22HZ AWB
Facility	SEC.22-T2N-R67W		

WELLPATH DATA (144 stations) † = interpolated/extrapolated station										
MD [ft]	Inclination [°]	Azimuth [°]	TVD [ft]	Vert Sect [ft]	North [ft]	East [ft]	Latitude	Longitude	DLS [°/100ft]	Comments
0.00†	0.000	178.540	0.00	0.00	0.00	0.00	40°07'02.064"N	104°52'06.938"W	0.00	
25.00	0.000	178.540	25.00	0.00	0.00	0.00	40°07'02.064"N	104°52'06.938"W	0.00	TIE ON
125.00	0.090	178.540	125.00	-0.08	-0.08	0.00	40°07'02.063"N	104°52'06.938"W	0.09	BEGIN GYRO SURVEYS
225.00	0.330	222.240	225.00	-0.33	-0.37	-0.19	40°07'02.060"N	104°52'06.940"W	0.27	
325.00	0.260	243.840	325.00	-0.56	-0.68	-0.59	40°07'02.057"N	104°52'06.946"W	0.13	
425.00	0.300	255.390	425.00	-0.64	-0.85	-1.04	40°07'02.056"N	104°52'06.951"W	0.07	
525.00	0.420	320.710	525.00	-0.33	-0.63	-1.53	40°07'02.058"N	104°52'06.958"W	0.40	
625.00	0.380	294.200	624.99	0.18	-0.21	-2.06	40°07'02.062"N	104°52'06.965"W	0.19	
725.00	0.420	284.520	724.99	0.53	0.02	-2.72	40°07'02.064"N	104°52'06.973"W	0.08	
825.00	0.650	271.130	824.99	0.80	0.12	-3.64	40°07'02.065"N	104°52'06.985"W	0.26	
925.00	0.640	273.440	924.98	1.06	0.16	-4.77	40°07'02.066"N	104°52'06.999"W	0.03	
1025.00	0.610	275.410	1024.97	1.34	0.25	-5.86	40°07'02.066"N	104°52'07.013"W	0.04	
1125.00	0.570	262.430	1124.97	1.52	0.23	-6.88	40°07'02.066"N	104°52'07.027"W	0.14	
1225.00	0.330	286.840	1224.97	1.68	0.25	-7.65	40°07'02.066"N	104°52'07.036"W	0.30	
1294.00	0.200	300.180	1293.96	1.85	0.37	-7.94	40°07'02.068"N	104°52'07.040"W	0.21	TIE ONTO GYRO SURVEYS
1374.00	0.070	300.060	1373.96	1.98	0.46	-8.10	40°07'02.069"N	104°52'07.042"W	0.16	BEGIN BHI MWD+IFR SURVEYS
1466.00	0.060	346.300	1465.96	2.06	0.54	-8.16	40°07'02.069"N	104°52'07.043"W	0.06	
1569.00	2.110	252.670	1568.94	1.90	0.02	-9.99	40°07'02.064"N	104°52'07.067"W	2.05	
1661.00	4.700	250.020	1660.77	1.11	-1.77	-15.15	40°07'02.047"N	104°52'07.133"W	2.82	
1753.00	6.950	252.130	1752.29	-0.18	-4.76	-23.99	40°07'02.017"N	104°52'07.247"W	2.46	
1845.00	9.020	250.550	1843.39	-1.94	-8.87	-36.09	40°07'01.976"N	104°52'07.403"W	2.26	
1937.00	11.370	250.980	1933.93	-4.32	-14.23	-51.46	40°07'01.923"N	104°52'07.600"W	2.56	
2028.00	13.310	244.910	2022.83	-8.18	-21.60	-69.43	40°07'01.851"N	104°52'07.832"W	2.56	
2212.00	12.210	242.180	2202.29	-19.08	-39.66	-105.82	40°07'01.672"N	104°52'08.300"W	0.68	
2304.00	12.910	248.630	2292.09	-23.81	-47.95	-124.00	40°07'01.590"N	104°52'08.534"W	1.70	
2488.00	11.840	248.870	2471.81	-30.95	-62.24	-160.75	40°07'01.449"N	104°52'09.007"W	0.58	
2579.00	13.330	246.720	2560.62	-34.88	-69.75	-179.10	40°07'01.375"N	104°52'09.243"W	1.72	
2765.00	11.310	245.590	2742.33	-43.79	-85.77	-215.40	40°07'01.216"N	104°52'09.711"W	1.09	
2857.00	13.160	248.010	2832.24	-47.94	-93.42	-233.33	40°07'01.141"N	104°52'09.941"W	2.09	
2950.00	14.580	249.370	2922.52	-51.99	-101.51	-254.10	40°07'01.061"N	104°52'10.209"W	1.57	
3135.00	12.300	248.440	3102.45	-59.62	-116.95	-294.23	40°07'00.908"N	104°52'10.725"W	1.24	
3228.00	12.950	245.520	3193.20	-63.93	-124.91	-312.93	40°07'00.830"N	104°52'10.966"W	0.98	
3320.00	14.260	243.700	3282.61	-69.39	-134.20	-332.47	40°07'00.738"N	104°52'11.217"W	1.50	
3414.00	12.810	242.450	3374.00	-75.48	-144.15	-352.09	40°07'00.639"N	104°52'11.470"W	1.57	
3509.00	12.600	243.050	3466.68	-81.39	-153.72	-370.66	40°07'00.545"N	104°52'11.709"W	0.26	
3603.00	13.550	248.900	3558.24	-86.20	-162.33	-390.07	40°07'00.460"N	104°52'11.959"W	1.73	
3697.00	15.680	250.010	3649.19	-90.19	-170.64	-412.29	40°07'00.378"N	104°52'12.245"W	2.29	
3791.00	14.120	251.130	3740.03	-93.82	-178.69	-435.08	40°07'00.298"N	104°52'12.538"W	1.69	
3886.00	14.910	248.320	3832.00	-97.74	-186.95	-457.40	40°07'00.216"N	104°52'12.825"W	1.11	
3980.00	12.670	244.930	3923.29	-102.56	-195.79	-477.98	40°07'00.129"N	104°52'13.090"W	2.53	
4074.00	14.190	244.590	4014.71	-108.00	-205.10	-497.72	40°07'00.037"N	104°52'13.344"W	1.62	
4169.00	14.150	239.020	4106.83	-114.93	-216.08	-518.20	40°06'59.929"N	104°52'13.608"W	1.44	
4263.00	14.960	238.700	4197.81	-123.13	-228.30	-538.41	40°06'59.808"N	104°52'13.868"W	0.87	
4357.00	14.090	237.980	4288.80	-131.52	-240.67	-558.48	40°06'59.686"N	104°52'14.127"W	0.95	
4452.00	12.640	236.010	4381.23	-139.79	-252.61	-576.91	40°06'59.568"N	104°52'14.364"W	1.60	

REFERENCE WELLPATH IDENTIFICATION			
Operator	KERR-MCGEE OIL & GAS ONSHORE LP	Slot	SLOT#26 WARDAR 27C-22HZ (300'FSL & 310'FEL, SEC.22)
Area	COLORADO	Well	WARDAR 27C-22HZ
Field	WELD COUNTY (KERR MCGEE)	Wellbore	WARDAR 27C-22HZ AWB
Facility	SEC.22-T2N-R67W		

WELLPATH DATA (144 stations)										
MD [ft]	Inclination [°]	Azimuth [°]	TVD [ft]	Vert Sect [ft]	North [ft]	East [ft]	Latitude	Longitude	DLS [°/100ft]	Comments
4546.00	13.770	237.580	4472.74	-147.95	-264.36	-594.88	40°06'59.452"N	104°52'14.595"W	1.26	
4640.00	15.540	242.630	4563.68	-155.66	-276.14	-615.51	40°06'59.335"N	104°52'14.861"W	2.32	
4735.00	14.700	240.390	4655.40	-163.16	-287.95	-637.29	40°06'59.218"N	104°52'15.141"W	1.08	
4829.00	14.490	239.600	4746.36	-170.94	-299.79	-657.80	40°06'59.101"N	104°52'15.405"W	0.31	
4923.00	14.050	240.130	4837.46	-178.61	-311.43	-677.84	40°06'58.986"N	104°52'15.663"W	0.49	
5017.00	14.000	247.530	4928.67	-184.63	-321.46	-698.24	40°06'58.887"N	104°52'15.925"W	1.91	
5112.00	13.050	246.910	5021.03	-189.23	-330.06	-718.73	40°06'58.802"N	104°52'16.189"W	1.01	
5206.00	14.870	247.010	5112.25	-194.02	-338.93	-739.59	40°06'58.715"N	104°52'16.458"W	1.94	
5300.00	13.950	245.470	5203.29	-199.25	-348.34	-761.01	40°06'58.621"N	104°52'16.733"W	1.06	
5395.00	13.070	244.910	5295.66	-204.61	-357.65	-781.15	40°06'58.529"N	104°52'16.993"W	0.94	
5489.00	14.950	245.380	5386.86	-210.12	-367.21	-801.80	40°06'58.435"N	104°52'17.258"W	2.00	
5583.00	13.520	245.690	5477.97	-215.58	-376.79	-822.84	40°06'58.340"N	104°52'17.529"W	1.52	
5677.00	13.650	243.770	5569.35	-221.09	-386.21	-842.80	40°06'58.247"N	104°52'17.786"W	0.50	
5772.00	13.200	242.400	5661.75	-227.20	-396.19	-862.47	40°06'58.149"N	104°52'18.039"W	0.58	
5866.00	11.600	248.160	5753.56	-232.10	-404.68	-880.76	40°06'58.065"N	104°52'18.275"W	2.15	
5960.00	10.270	246.460	5845.85	-235.75	-411.55	-897.21	40°06'57.997"N	104°52'18.486"W	1.46	
6054.00	9.220	243.640	5938.49	-239.61	-418.24	-911.64	40°06'57.931"N	104°52'18.672"W	1.23	
6148.00	8.120	247.770	6031.42	-242.94	-424.09	-924.53	40°06'57.873"N	104°52'18.838"W	1.34	
6243.00	6.370	240.830	6125.66	-245.93	-429.20	-935.35	40°06'57.822"N	104°52'18.977"W	2.06	
6337.00	5.220	252.970	6219.18	-248.03	-432.99	-943.99	40°06'57.785"N	104°52'19.089"W	1.78	
6432.00	3.270	270.910	6313.92	-247.95	-434.22	-950.83	40°06'57.773"N	104°52'19.177"W	2.46	
6526.00	1.330	277.460	6407.84	-247.06	-434.03	-954.59	40°06'57.775"N	104°52'19.225"W	2.08	
6621.00	0.590	267.570	6502.82	-246.65	-433.91	-956.18	40°06'57.776"N	104°52'19.245"W	0.80	
6809.00	0.690	259.200	6690.81	-246.50	-434.16	-958.26	40°06'57.773"N	104°52'19.272"W	0.07	
6998.00	0.820	278.700	6879.80	-246.05	-434.17	-960.71	40°06'57.773"N	104°52'19.304"W	0.15	
7092.00	1.110	354.040	6973.78	-244.92	-433.16	-961.47	40°06'57.783"N	104°52'19.314"W	1.28	
7139.00	5.320	1.980	7020.70	-242.34	-430.53	-961.44	40°06'57.809"N	104°52'19.313"W	8.99	
7187.00	10.120	1.070	7068.25	-236.04	-424.09	-961.29	40°06'57.873"N	104°52'19.311"W	10.00	
7234.00	14.670	0.790	7114.14	-226.16	-414.00	-961.13	40°06'57.973"N	104°52'19.309"W	9.68	
7281.00	18.500	358.780	7159.18	-212.98	-400.59	-961.20	40°06'58.105"N	104°52'19.310"W	8.24	
7328.00	22.460	357.670	7203.20	-196.74	-384.16	-961.73	40°06'58.267"N	104°52'19.317"W	8.47	
7375.00	26.840	359.780	7245.91	-177.42	-364.57	-962.13	40°06'58.461"N	104°52'19.322"W	9.50	
7422.00	31.160	2.310	7287.01	-155.14	-341.80	-961.68	40°06'58.686"N	104°52'19.316"W	9.55	
7469.00	34.580	2.570	7326.48	-130.32	-316.32	-960.60	40°06'58.938"N	104°52'19.302"W	7.28	
7516.00	36.890	3.770	7364.63	-103.69	-288.91	-959.07	40°06'59.209"N	104°52'19.283"W	5.14	
7564.00	40.920	1.810	7401.97	-74.39	-258.81	-957.63	40°06'59.506"N	104°52'19.264"W	8.78	
7611.00	45.190	1.440	7436.31	-43.06	-226.74	-956.72	40°06'59.823"N	104°52'19.252"W	9.10	
7659.00	49.620	359.820	7468.79	-8.44	-191.42	-956.35	40°07'00.172"N	104°52'19.248"W	9.56	
7706.00	55.650	359.680	7497.30	28.26	-154.08	-956.51	40°07'00.541"N	104°52'19.250"W	12.83	
7753.00	60.520	359.750	7522.14	67.47	-114.20	-956.71	40°07'00.935"N	104°52'19.252"W	10.36	
7800.00	65.080	0.700	7543.62	108.49	-72.41	-956.54	40°07'01.348"N	104°52'19.250"W	9.87	
7847.00	68.990	1.170	7561.95	150.85	-29.15	-955.83	40°07'01.776"N	104°52'19.241"W	8.37	
7894.00	72.320	0.360	7577.52	194.28	15.18	-955.24	40°07'02.214"N	104°52'19.234"W	7.27	
7941.00	76.580	359.260	7590.12	238.78	60.45	-955.40	40°07'02.661"N	104°52'19.236"W	9.34	
7988.00	80.580	359.920	7599.42	284.08	106.51	-955.73	40°07'03.116"N	104°52'19.240"W	8.62	

REFERENCE WELLPATH IDENTIFICATION			
Operator	KERR-MCGEE OIL & GAS ONSHORE LP	Slot	SLOT#26 WARDAR 27C-22HZ (300'FSL & 310'FEL, SEC.22)
Area	COLORADO	Well	WARDAR 27C-22HZ
Field	WELD COUNTY (KERR MCGEE)	Wellbore	WARDAR 27C-22HZ AWB
Facility	SEC.22-T2N-R67W		

WELLPATH DATA (144 stations) † = interpolated/extrapolated station										
MD [ft]	Inclination [°]	Azimuth [°]	TVD [ft]	Vert Sect [ft]	North [ft]	East [ft]	Latitude	Longitude	DLS [°/100ft]	Comments
8020.00	83.290	359.520	7603.91	315.22	138.19	-955.88	40°07'03.429"N	104°52'19.242"W	8.56	
8056.00†	84.724	359.643	7607.67	350.44	173.99	-956.14	40°07'03.783"N	104°52'19.245"W	4.00	7" CASING POINT
8132.00	87.750	359.900	7612.66	424.97	249.82	-956.44	40°07'04.533"N	104°52'19.249"W	4.00	
8226.00	88.390	0.010	7615.82	517.26	343.77	-956.52	40°07'05.461"N	104°52'19.250"W	0.69	
8320.00	89.290	0.090	7617.72	609.55	437.75	-956.44	40°07'06.390"N	104°52'19.249"W	0.96	
8414.00	89.560	0.510	7618.67	701.78	531.74	-955.94	40°07'07.319"N	104°52'19.243"W	0.53	
8509.00	89.320	0.520	7619.60	794.92	626.73	-955.09	40°07'08.257"N	104°52'19.232"W	0.25	
8604.00	90.120	0.890	7620.06	888.01	721.72	-953.92	40°07'09.196"N	104°52'19.217"W	0.93	
8698.00	90.490	0.160	7619.56	980.17	815.72	-953.06	40°07'10.125"N	104°52'19.206"W	0.87	
8792.00	90.550	359.870	7618.71	1072.48	909.71	-953.04	40°07'11.054"N	104°52'19.206"W	0.32	
8887.00	90.740	359.960	7617.64	1165.82	1004.71	-953.18	40°07'11.992"N	104°52'19.207"W	0.22	
8981.00	91.190	359.700	7616.05	1258.18	1098.69	-953.46	40°07'12.921"N	104°52'19.211"W	0.55	
9075.00	91.230	359.950	7614.07	1350.54	1192.67	-953.74	40°07'13.850"N	104°52'19.215"W	0.27	
9170.00	90.360	0.210	7612.75	1443.82	1287.66	-953.61	40°07'14.789"N	104°52'19.213"W	0.96	
9264.00	90.890	359.890	7611.73	1536.12	1381.65	-953.53	40°07'15.717"N	104°52'19.212"W	0.66	
9359.00	91.040	359.560	7610.13	1629.51	1476.64	-953.98	40°07'16.656"N	104°52'19.218"W	0.38	
9454.00	90.300	0.780	7609.01	1722.75	1571.63	-953.70	40°07'17.595"N	104°52'19.215"W	1.50	
9547.00	90.240	1.200	7608.58	1813.78	1664.61	-952.09	40°07'18.514"N	104°52'19.194"W	0.46	
9641.00	89.070	0.670	7609.14	1905.81	1758.60	-950.56	40°07'19.442"N	104°52'19.174"W	1.37	
9736.00	89.160	0.740	7610.61	1998.88	1853.58	-949.39	40°07'20.381"N	104°52'19.159"W	0.12	
9830.00	89.260	0.700	7611.91	2090.97	1947.56	-948.21	40°07'21.310"N	104°52'19.144"W	0.11	
9925.00	90.030	0.870	7612.49	2184.02	2042.55	-946.91	40°07'22.249"N	104°52'19.127"W	0.83	
10019.00	90.730	1.160	7611.87	2276.02	2136.53	-945.24	40°07'23.177"N	104°52'19.106"W	0.81	
10113.00	90.830	0.530	7610.59	2368.07	2230.51	-943.86	40°07'24.106"N	104°52'19.088"W	0.68	
10208.00	90.670	0.470	7609.35	2461.21	2325.50	-943.03	40°07'25.045"N	104°52'19.078"W	0.18	
10302.00	91.130	0.560	7607.87	2553.37	2419.49	-942.18	40°07'25.973"N	104°52'19.067"W	0.50	
10397.00	89.870	0.490	7607.04	2646.51	2514.48	-941.31	40°07'26.912"N	104°52'19.056"W	1.33	
10491.00	89.930	359.800	7607.21	2738.79	2608.48	-941.08	40°07'27.841"N	104°52'19.053"W	0.74	
10586.00	89.530	358.560	7607.65	2832.34	2703.46	-942.44	40°07'28.780"N	104°52'19.070"W	1.37	
10680.00	89.630	358.640	7608.34	2925.07	2797.43	-944.73	40°07'29.708"N	104°52'19.100"W	0.14	
10774.00	90.150	0.060	7608.52	3017.59	2891.42	-945.80	40°07'30.637"N	104°52'19.113"W	1.61	
10869.00	90.120	0.300	7608.30	3110.84	2986.42	-945.50	40°07'31.576"N	104°52'19.110"W	0.25	
10963.00	90.180	359.740	7608.05	3203.16	3080.42	-945.47	40°07'32.505"N	104°52'19.109"W	0.60	
11057.00	90.700	359.420	7607.33	3295.61	3174.42	-946.16	40°07'33.434"N	104°52'19.118"W	0.65	
11151.00	90.490	359.600	7606.36	3388.09	3268.41	-946.96	40°07'34.363"N	104°52'19.129"W	0.29	
11246.00	90.210	0.050	7605.78	3481.45	3363.41	-947.25	40°07'35.301"N	104°52'19.132"W	0.56	
11340.00	89.410	0.480	7606.09	3573.69	3457.40	-946.82	40°07'36.230"N	104°52'19.127"W	0.97	
11435.00	90.000	1.300	7606.58	3666.71	3552.39	-945.34	40°07'37.169"N	104°52'19.108"W	1.06	
11529.00	90.090	0.870	7606.50	3758.69	3646.37	-943.56	40°07'38.098"N	104°52'19.085"W	0.47	
11624.00	90.120	1.260	7606.33	3851.65	3741.36	-941.79	40°07'39.036"N	104°52'19.062"W	0.41	
11718.00	89.840	0.800	7606.36	3943.65	3835.34	-940.10	40°07'39.965"N	104°52'19.041"W	0.57	
11813.00	90.240	0.680	7606.29	4036.72	3930.33	-938.88	40°07'40.904"N	104°52'19.025"W	0.44	
11908.00	90.300	0.540	7605.85	4129.83	4025.33	-937.87	40°07'41.843"N	104°52'19.012"W	0.16	
12003.00	90.460	0.840	7605.22	4222.92	4120.32	-936.72	40°07'42.781"N	104°52'18.997"W	0.36	
12097.00	89.960	0.120	7604.87	4315.09	4214.31	-935.93	40°07'43.710"N	104°52'18.987"W	0.93	

REFERENCE WELLPATH IDENTIFICATION			
Operator	KERR-MCGEE OIL & GAS ONSHORE LP	Slot	SLOT#26 WARDAR 27C-22HZ (300'FSL & 310'FEL, SEC.22)
Area	COLORADO	Well	WARDAR 27C-22HZ
Field	WELD COUNTY (KERR MCGEE)	Wellbore	WARDAR 27C-22HZ AWB
Facility	SEC.22-T2N-R67W		

WELLPATH DATA (144 stations)										
MD [ft]	Inclination [°]	Azimuth [°]	TVD [ft]	Vert Sect [ft]	North [ft]	East [ft]	Latitude	Longitude	DLS [°/100ft]	Comments
12191.00	90.090	359.890	7604.83	4407.42	4308.31	-935.93	40°07'44.639"N	104°52'18.987"W	0.28	
12286.00	90.090	359.400	7604.68	4500.84	4403.31	-936.52	40°07'45.578"N	104°52'18.995"W	0.52	
12379.00	89.590	358.260	7604.94	4592.52	4496.29	-938.41	40°07'46.497"N	104°52'19.019"W	1.34	
12474.00	89.470	358.190	7605.72	4686.33	4591.24	-941.36	40°07'47.435"N	104°52'19.057"W	0.15	
12568.00	90.240	358.500	7605.96	4779.13	4685.20	-944.07	40°07'48.363"N	104°52'19.092"W	0.88	
12662.00	90.240	358.210	7605.57	4871.93	4779.16	-946.77	40°07'49.292"N	104°52'19.127"W	0.31	
12756.00	90.640	358.850	7604.84	4964.67	4873.12	-949.18	40°07'50.221"N	104°52'19.158"W	0.80	
12808.00	90.550	358.330	7604.30	5015.97	4925.11	-950.46	40°07'50.734"N	104°52'19.174"W	1.01	LAST BHI MWD+IFR SURVEY
12863.00	90.550	358.330	7603.78	5070.27	4980.08	-952.06	40°07'51.278"N	104°52'19.195"W	0.00	PROJECTION TO BIT

HOLE & CASING SECTIONS - Ref Wellbore: WARDAR 27C-22HZ AWB Ref Wellpath: WARDAR 27C-22HZ AWP										
String/Diameter	Start MD [ft]	End MD [ft]	Interval [ft]	Start TVD [ft]	End TVD [ft]	Start N/S [ft]	Start E/W [ft]	End N/S [ft]	End E/W [ft]	
13.5in Open Hole	25.00	1345.00	1320.00	25.00	1344.96	0.00	0.00	0.44	-8.06	
9.625in Casing Surface	25.00	1345.00	1320.00	25.00	1344.96	0.00	0.00	0.44	-8.06	
8.75in Open Hole	1345.00	8068.00	6723.00	1344.96	7608.72	0.44	-8.06	185.95	-956.21	
7in Casing Intermediate	25.00	8056.00	8031.00	25.00	7607.67	0.00	0.00	173.99	-956.14	
6.125in Open Hole	8068.00	12863.00	4795.00	7608.72	7603.78	185.95	-956.21	4980.08	-952.06	

WELLPATH COMPOSITION - Ref Wellbore: WARDAR 27C-22HZ AWB Ref Wellpath: WARDAR 27C-22HZ AWP				
Start MD [ft]	End MD [ft]	Positional Uncertainty Model	Log Name/Comment	Wellbore
25.00	1294.00	Generic gyro - continuous (Standard)	MS SURFACE GYROS <125-1294>	WARDAR 27C-22HZ AWB
1294.00	8020.00	NaviTrak (MAGCORR,IFR)	BHI NAVITRAK MWD+IFR 8 3/4" <1374-8020>	WARDAR 27C-22HZ AWB
8020.00	12808.00	NaviTrak (MAGCORR,IFR)	BHI NAVITRAK MWD+IFR 6 1/8" <8132-12808>	WARDAR 27C-22HZ AWB
12808.00	12863.00	Blind Drilling (std)	Projection to bit	WARDAR 27C-22HZ AWB



Actual Wellpath Report

GWARDAR 27C-22HZ AWP

Page 6 of 6



REFERENCE WELLPATH IDENTIFICATION			
Operator	KERR-MCGEE OIL & GAS ONSHORE LP	Slot	SLOT#26 GWARDAR 27C-22HZ (300'FSL & 310'FEL, SEC.22)
Area	COLORADO	Well	GWARDAR 27C-22HZ
Field	WELD COUNTY (KERR MCGEE)	Wellbore	GWARDAR 27C-22HZ AWB
Facility	SEC.22-T2N-R67W		

WELLPATH COMMENTS				
MD [ft]	Inclination [°]	Azimuth [°]	TVD [ft]	Comment
25.00	0.000	178.540	25.00	TIE ON
125.00	0.090	178.540	125.00	BEGIN GYRO SURVEYS
1294.00	0.200	300.180	1293.96	TIE ONTO GYRO SURVEYS
1374.00	0.070	300.060	1373.96	BEGIN BHI MWD+IFR SURVEYS
8056.00	84.724	359.643	7607.67	7" CASING POINT
12808.00	90.550	358.330	7604.30	LAST BHI MWD+IFR SURVEY
12863.00	90.550	358.330	7603.78	PROJECTION TO BIT