



# Kerr-McGee Oil & Gas Onshore LP

A subsidiary of Anadarko Petroleum Corporation

1099 18<sup>th</sup> Street  
Denver, CO 80202  
720-929-6000

November 18, 2014

Department of Natural Resources  
Oil and Gas Conservation Commission  
The Chancery Building  
1120 Lincoln St., Suite 801  
Denver, CO 80203

Re: **30 Day Certification Letter - 318A.e**  
**BUTTERBALL 16C-10HZ**  
Township 2N North, Range 67 West, Section 10: NWNE  
Unit Spacing: 2N-67W-3: SESE; 10:E2E2; 15: NENE  
Weld County, Colorado  
UNIT ACREAGE 240

Ladies/Gentlemen:

Kerr McGee Oil and Gas Onshore LP ("KMG") hereby certifies to the Director that KMG owns one-hundred percent (100%) of the mineral rights in the proposed spacing unit. Therefore, KMG respectfully requests the Director to approve the boundary well.

If you have any questions or issues regarding this permit, please contact Cheryl Light at (720) 929-6461.

Very truly yours,

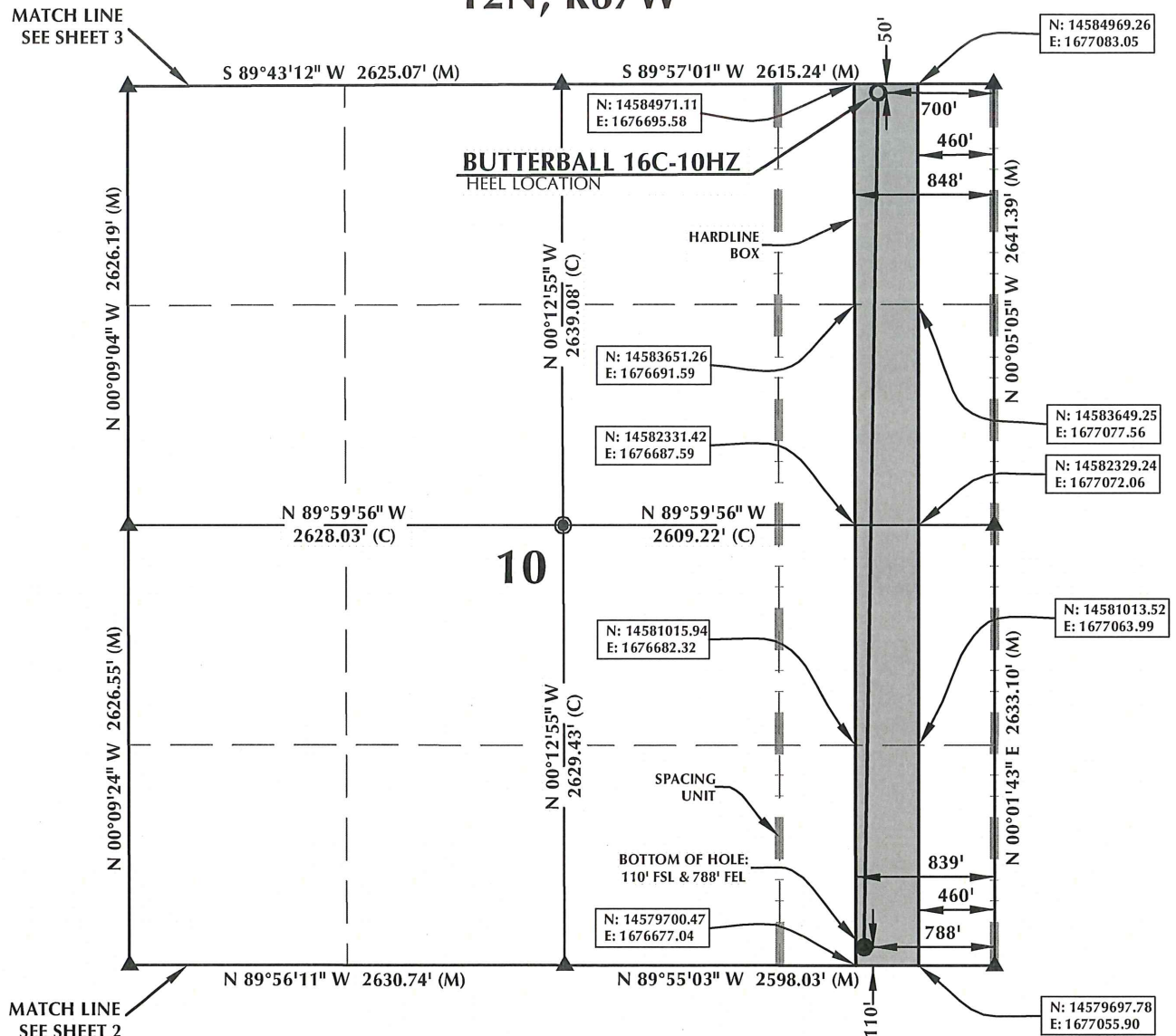
**KERR-McGEE OIL AND GAS ONSHORE LP**

A blue ink signature of Craig Richardson, consisting of a stylized 'C' followed by a horizontal line.

**Craig Richardson**  
**Regulatory Analyst II**

Enclosure

# SPACING UNIT: BUTTERBALL 16C-10HZ T2N, R67W



HEEL LOCATION  
N: 14,584,920.42'  
E: 1,676,842.94'

LATITUDE= 40.159717°  
LONGITUDE= -104.869626°

LATITUDE= 40°09'34.981"  
LONGITUDE= -104°52'10.652"

AVAILABLE FOOTAGE  
6985'

BOTTOM HOLE LOCATION  
N: 14,579,810.06'  
E: 1,676,728.70'

LATITUDE= 40.145684°  
LONGITUDE= -104.870061°

LATITUDE= 40°08'44.462"  
LONGITUDE= -104°52'12.220"

GRID



SCALE: 1" = 1000'

## NOTES:

1. ▲ INDICATES FOUND SECTION CORNER
2. ● INDICATES CALCULATED CORNER
3. BEARINGS, DISTANCES, AND OFFSETS ARE BASED ON COLORADO COORDINATE SYSTEM 1983, NORTH ZONE
4. COMBINED SCALE FACTOR: .99972297
5. N / E COORDINATES ARE BASED ON UTM COORDINATE SYSTEM NAD83, ZONE 13
6. LATITUDE AND LONGITUDE COORDINATES ARE NAD83 (CORS96)(EPOCH:2002)
7. THIS EXHIBIT DOES NOT REPRESENT A LAND SURVEY PLAT OR IMPROVEMENT SURVEY PLAT AS DEFINED BY C.R.S. 38-51-102 AND CANNOT BE RELIED UPON TO DETERMINE OWNERSHIP.

## WELL PAD - BUTTERBALL 37N-10HZ

BUTTERBALL 16C-10HZ  
SPACING UNIT EXHIBIT  
50' FNL & 700' FEL NENE (HEEL)  
110' FSL & 788' FEL SESE (BOTTOM)  
LOCATED IN SECTION 10  
T2N, R67W, 6TH P.M.  
WELD COUNTY, COLORADO

Kerr-McGee Oil &  
Gas Onshore L.P.  
1099 18th Street  
Denver, Colorado 80202



## CONSULTING, LLC

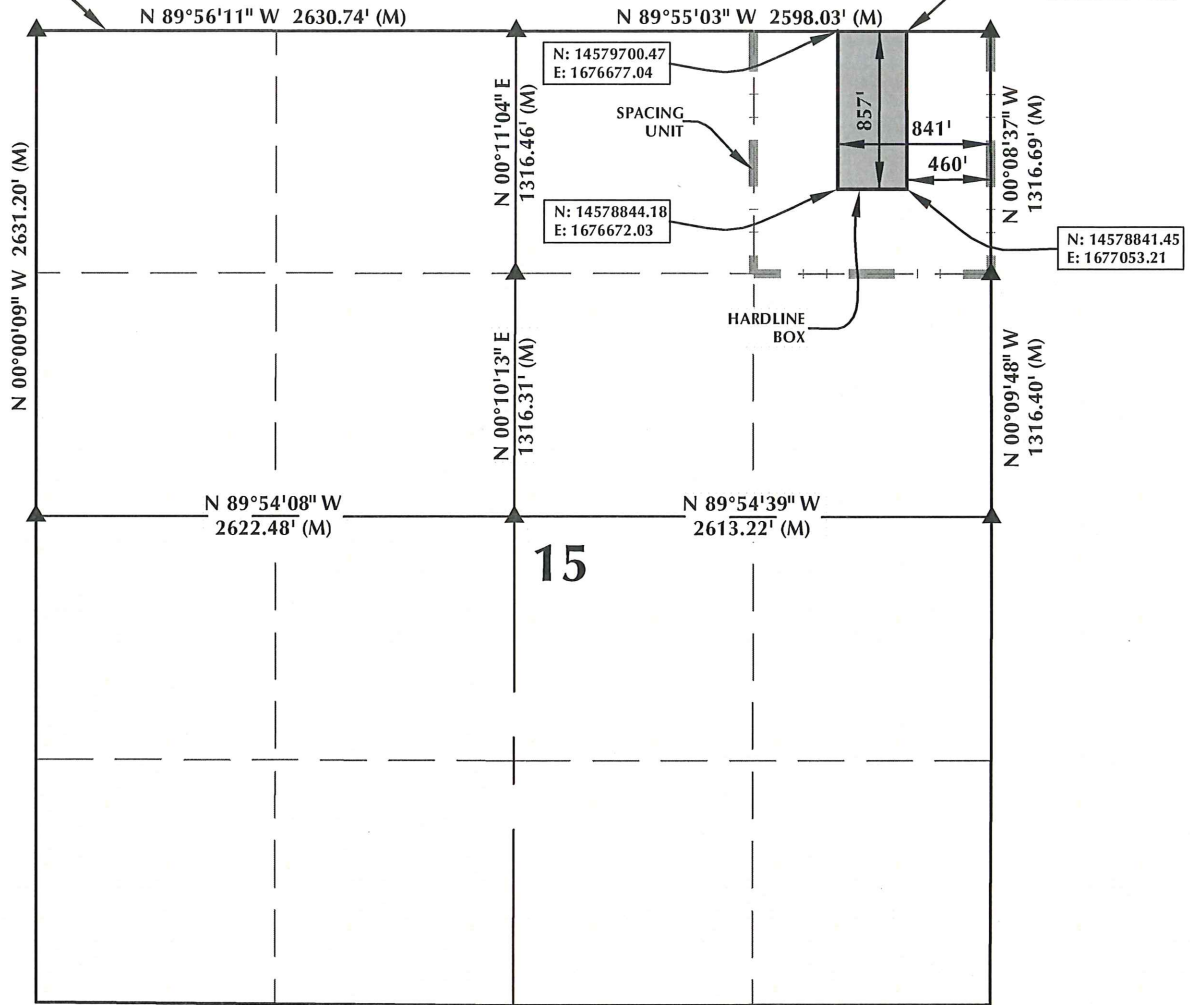
SHERIDAN OFFICE  
2155 North Main Street  
Sheridan, Wyoming 82801  
Phone 307-674-0609

LOVELAND OFFICE  
1635 Foxtrail Drive, Suite 204  
Loveland, Colorado 80538  
Phone 970-776-4331

DRAFTED BY:	LMO	CHECKED BY:	BJR	SHEET NO:
DATE DRAFTED:	10/30/13	DATE SURVEYED:	10/1/13	1
REVISED:	11/11/14	FILE NAME:	13-90	1 OF 3

# SPACING UNIT: BUTTERBALL 16C-10HZ T2N, R67W

MATCH LINE  
SEE SHEET 1



## HEEL LOCATION

N: 14,584,920.42'  
E: 1,676,842.94'

LATITUDE= 40.159717°  
LONGITUDE= -104.869626°

LATITUDE= 40°09'34.981"  
LONGITUDE= -104°52'10.652"

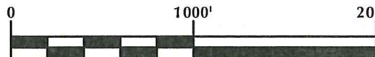
AVAILABLE FOOTAGE  
6985'

## BOTTOM HOLE LOCATION

N: 14,579,810.06'  
E: 1,676,728.70'

LATITUDE= 40.145684°  
LONGITUDE= -104.870061°

LATITUDE= 40°08'44.462"  
LONGITUDE= -104°52'12.220"



SCALE: 1" = 1000'

## NOTES:

- ▲ INDICATES FOUND SECTION CORNER
- INDICATES CALCULATED CORNER
- BEARINGS, DISTANCES, AND OFFSETS ARE BASED ON COLORADO COORDINATE SYSTEM 1983, NORTH ZONE
- COMBINED SCALE FACTOR: .99972297
- N / E COORDINATES ARE BASED ON UTM COORDINATE SYSTEM NAD83, ZONE 13
- LATITUDE AND LONGITUDE COORDINATES ARE NAD83 (CORS96)(EPOCH:2002)
- THIS EXHIBIT DOES NOT REPRESENT A LAND SURVEY PLAT OR IMPROVEMENT SURVEY PLAT AS DEFINED BY C.R.S. 38-51-102 AND CANNOT BE RELIED UPON TO DETERMINE OWNERSHIP.

## WELL PAD - BUTTERBALL 37N-10HZ

BUTTERBALL 16C-10HZ  
SPACING UNIT EXHIBIT  
50' FNL & 700' FEL NENE (HEEL)  
110' FSL & 788' FEL SESE (BOTTOM)  
LOCATED IN SECTION 10  
T2N, R67W, 6TH P.M.  
WELD COUNTY, COLORADO

**Kerr-McGee Oil &  
Gas Onshore L.P.**  
1099 18th Street  
Denver, Colorado 80202



## CONSULTING, LLC

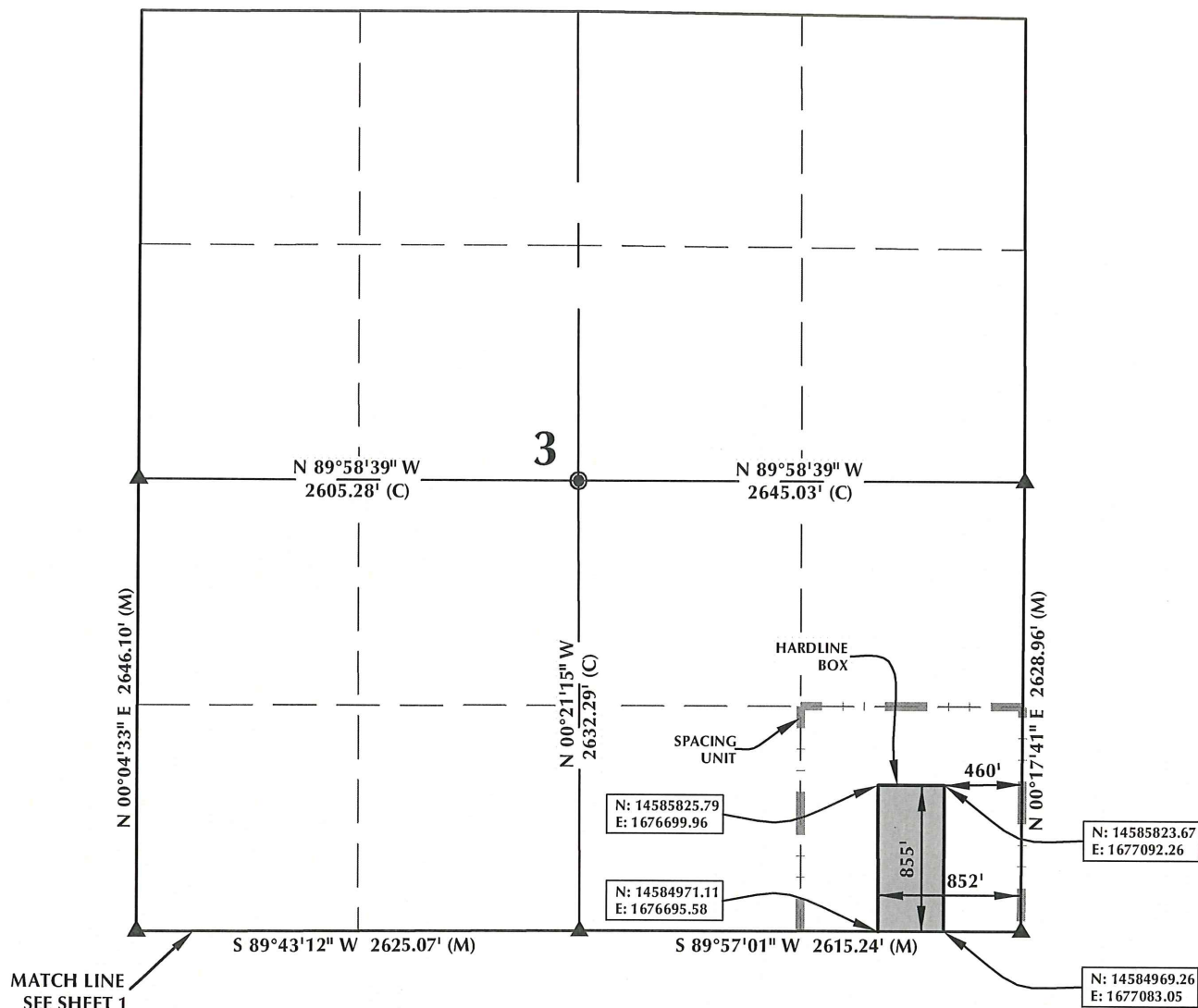
SHERIDAN OFFICE  
2155 North Main Street  
Sheridan, Wyoming 82801  
Phone 307-674-0609

LOVELAND OFFICE  
1635 Foxtrail Drive, Suite 204  
Loveland, Colorado 80538  
Phone 970-776-4331

DRAFTED BY: LMO	CHECKED BY: BJR	SHEET NO: 2
DATE DRAFTED: 10/30/13	DATE SURVEYED: 10/1/13	2 OF 3
REVISED: 11/11/14	FILE NAME: 13-90	



# SPACING UNIT: BUTTERBALL 16C-10HZ T2N, R67W



**HEEL LOCATION**  
N: 14,584,920.42'  
E: 1,676,842.94'

LATITUDE= 40.159717°  
LONGITUDE= -104.869626°

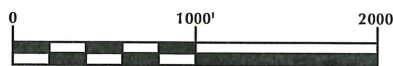
LATITUDE= 40°09'34.981"  
LONGITUDE= -104°52'10.652"

**AVAILABLE FOOTAGE**  
6985'

**BOTTOM HOLE LOCATION**  
N: 14,579,810.06'  
E: 1,676,728.70'

LATITUDE= 40.145684°  
LONGITUDE= -104.870061°

LATITUDE= 40°08'44.462"  
LONGITUDE= -104°52'12.220"



SCALE: 1" = 1000'

## NOTES:

1. ▲ INDICATES FOUND SECTION CORNER
2. ● INDICATES CALCULATED CORNER
3. BEARINGS, DISTANCES, AND OFFSETS ARE BASED ON COLORADO COORDINATE SYSTEM 1983, NORTH ZONE
4. COMBINED SCALE FACTOR: .99972297
5. N / E COORDINATES ARE BASED ON UTM COORDINATE SYSTEM NAD83, ZONE 13
6. LATITUDE AND LONGITUDE COORDINATES ARE NAD83 (CORS96)(EPOCH:2002)
7. THIS EXHIBIT DOES NOT REPRESENT A LAND SURVEY PLAT OR IMPROVEMENT SURVEY PLAT AS DEFINED BY C.R.S. 38-51-102 AND CANNOT BE RELIED UPON TO DETERMINE OWNERSHIP.

## WELL PAD - BUTTERBALL 37N-10HZ

BUTTERBALL 16C-10HZ  
SPACING UNIT EXHIBIT  
50' FNL & 700' FEL NENE (HEEL)  
110' FSL & 788' FEL SESE (BOTTOM)  
LOCATED IN SECTION 10  
T2N, R67W, 6TH P.M.  
WELD COUNTY, COLORADO

**Kerr-McGee Oil &  
Gas Onshore L.P.**  
1099 18th Street  
Denver, Colorado 80202



## CONSULTING, LLC

**SHERIDAN OFFICE**  
2155 North Main Street  
Sheridan, Wyoming 82801  
Phone 307-674-0609

**LOVELAND OFFICE**  
1635 Foxtrail Drive, Suite 204  
Loveland, Colorado 80538  
Phone 970-776-4331

DRAFTED BY:	LMO	CHECKED BY:	BJR	SHEET NO:
DATE DRAFTED:	10/30/13	DATE SURVEYED:	10/1/13	3
REVISED:	11/11/14	FILE NAME:	13-90	3 OF 3