



Kerr-McGee Oil & Gas Onshore LP

A subsidiary of Anadarko Petroleum Corporation

1099 18th Street
Denver, CO 80202
720-929-6000

November 19, 2014

Department of Natural Resources
Oil and Gas Conservation Commission
The Chancery Building
1120 Lincoln St., Suite 801
Denver, CO 80203

Re: **30 Day Certification Letter - 318A.e**
BUTTERBALL 38N-10HZ
Township 2N North, Range 67 West, Section 10: NWNE
Unit Acreage: 480
Unit Spacing: 2N-67W-2: SWSW; 3: SESE; 10:E2E2; 11:W2W2;
14: NWNW; 15: NENE
Weld County, Colorado

Ladies/Gentlemen:

Kerr-McGee Oil and Gas Onshore LP ("KMG") hereby certifies to the Director that a thirty (30) day notice has been given by certified mail to all owners in the proposed wellbore spacing unit. We have not received any objections to such well location, proposed spacing unit, or additional producing formation. KMG hereby requests the Director to approve the boundary well.

If you have any questions or issues regarding this permit, please contact Cheryl Light at (720) 929-6461.

Very truly yours,

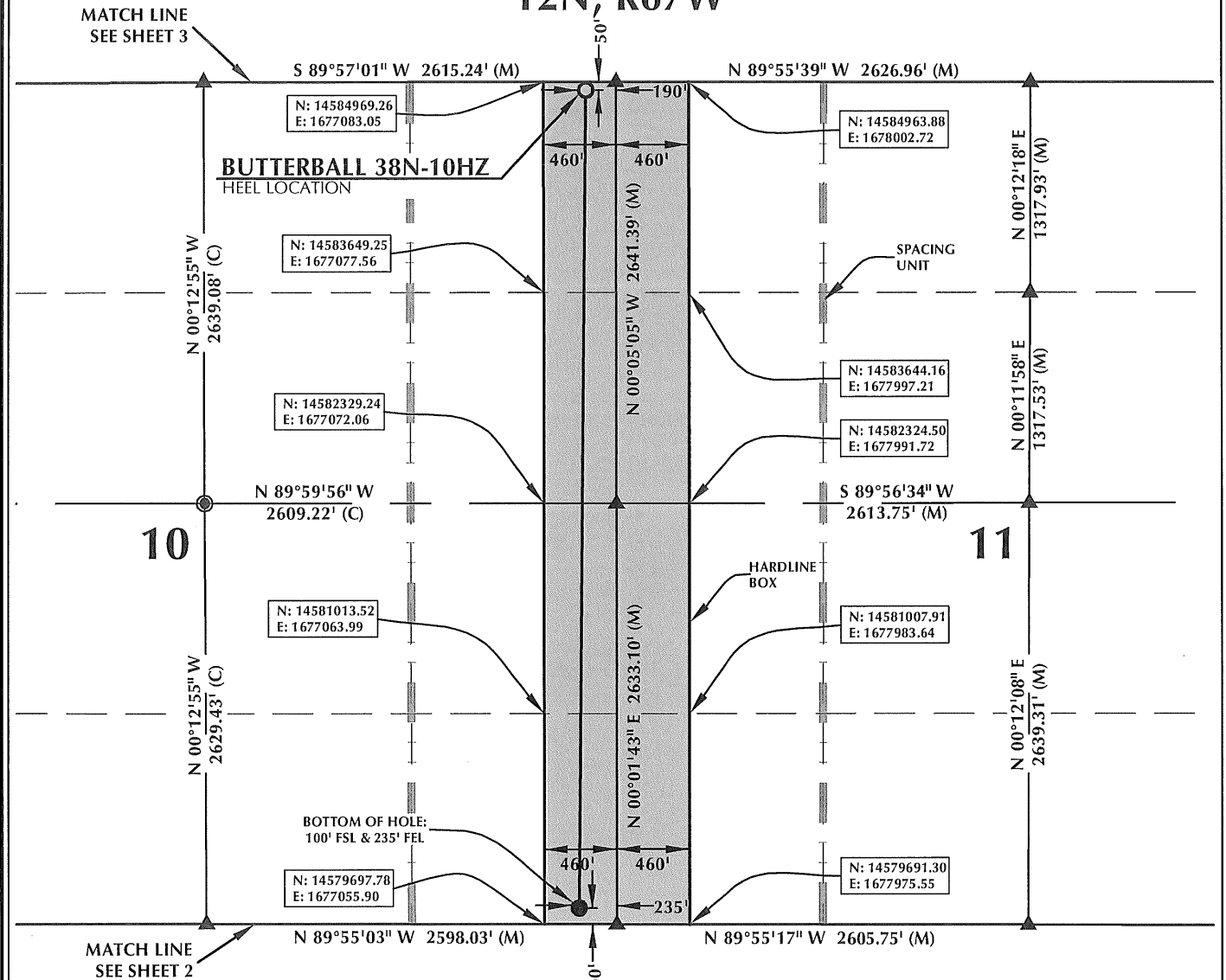
Kerr-McGee Oil and Gas Onshore LP

A handwritten signature in black ink, appearing to be 'Craig Richardson'.

Craig Richardson
Regulatory Analyst II

Enclosure

SPACING UNIT: BUTTERBALL 38N-10HZ T2N, R67W



HEEL LOCATION
N: 14,584,917.99'
E: 1,677,352.75'

LATITUDE= 40.159708°
LONGITUDE= -104.867801°

LATITUDE= 40°09'34.950"
LONGITUDE= -104°52'04.083"

AVAILABLE FOOTAGE
6985'

BOTTOM HOLE LOCATION
N: 14,579,796.15'
E: 1,677,281.43'

LATITUDE= 40.145643°
LONGITUDE= -104.868083°

LATITUDE= 40°08'44.316"
LONGITUDE= -104°52'05.100"



SCALE: 1" = 1000'

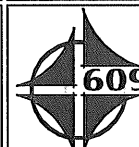
NOTES:

1. ▲ INDICATES FOUND SECTION CORNER
2. ● INDICATES CALCULATED CORNER
3. BEARINGS, DISTANCES, AND OFFSETS ARE BASED ON COLORADO COORDINATE SYSTEM 1983, NORTH ZONE
4. COMBINED SCALE FACTOR: .99972297
5. N / E COORDINATES ARE BASED ON UTM COORDINATE SYSTEM NAD83, ZONE 13
6. LATITUDE AND LONGITUDE COORDINATES ARE NAD83 (CORS96)(EPOCH:2002)
7. THIS EXHIBIT DOES NOT REPRESENT A LAND SURVEY PLAT OR IMPROVEMENT SURVEY PLAT AS DEFINED BY C.R.S. 38-51-102 AND CANNOT BE RELIED UPON TO DETERMINE OWNERSHIP.

WELL PAD - BUTTERBALL 37N-10HZ

**BUTTERBALL 38N-10HZ
SPACING UNIT EXHIBIT**
50' FNL & 190' FEL NENE (HEEL)
100' FSL & 235' FEL SESE (BOTTOM)
LOCATED IN SECTION 10
T2N, R67W, 6TH P.M.
WELD COUNTY, COLORADO

**Kerr-McGee Oil &
Gas Onshore L.P.**
1099 18th Street
Denver, Colorado 80202



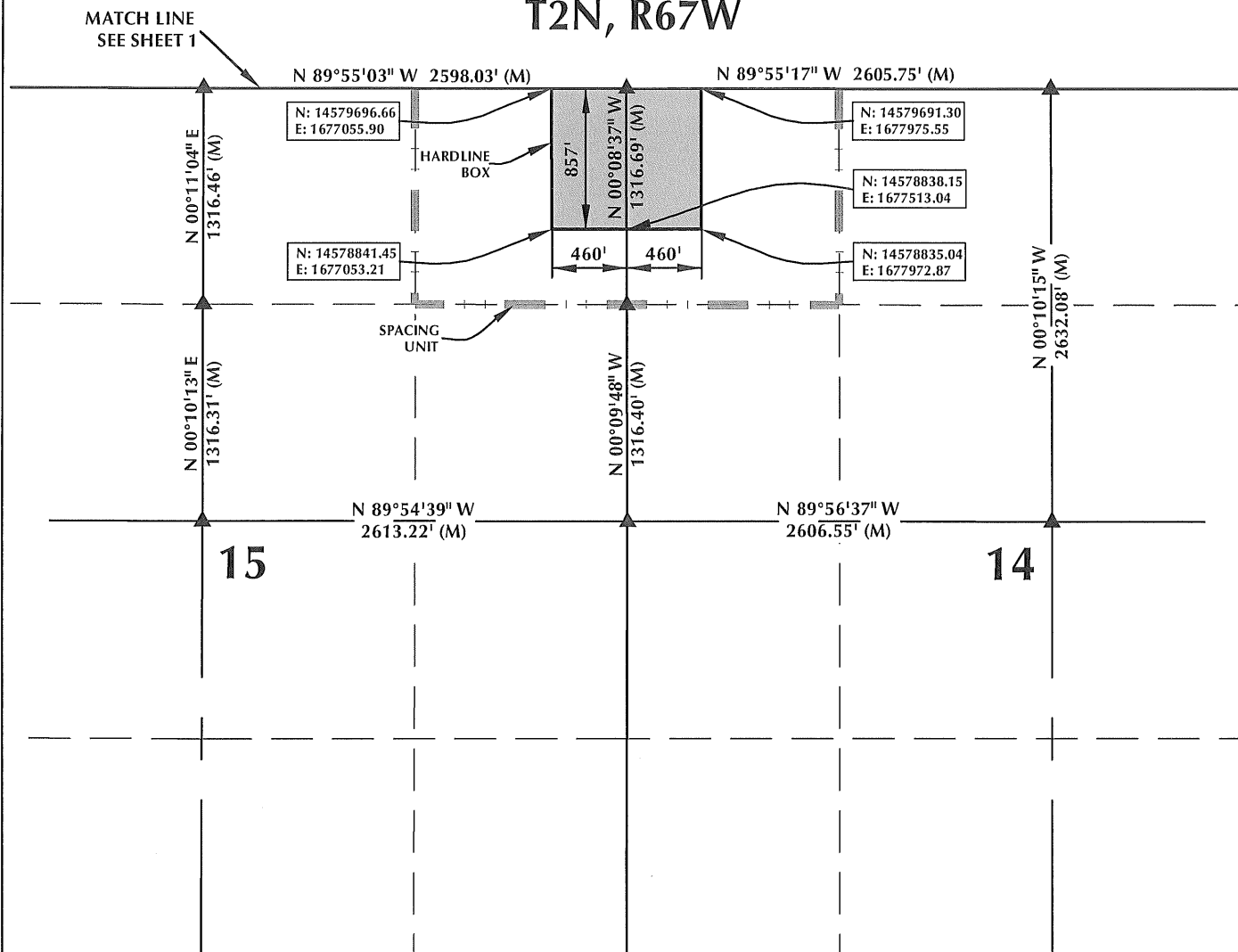
CONSULTING, LLC

SHERIDAN OFFICE
2155 North Main Street
Sheridan, Wyoming 82801
Phone 307-674-0609

LOVELAND OFFICE
1635 Foxtrail Drive, Suite 204
Loveland, Colorado 80538
Phone 970-776-4331

DRAFTED BY:	LMO	CHECKED BY:	BJR	SHEET NO:
DATE DRAFTED:	10/30/13	DATE SURVEYED:	10/1/13	1
REVISED:	11/11/14	FILE NAME:	13-90	1 OF 3

SPACING UNIT: BUTTERBALL 38N-10HZ T2N, R67W



HEEL LOCATION

N: 14,584,917.99'
E: 1,677,352.75'

LATITUDE= 40.159708°
LONGITUDE= -104.867801°

LATITUDE= 40°09'34.950\"
LONGITUDE= -104°52'04.083\"

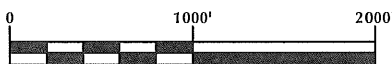
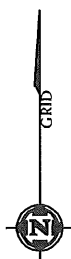
AVAILABLE FOOTAGE
6985'

BOTTOM HOLE LOCATION

N: 14,579,796.15'
E: 1,677,281.43'

LATITUDE= 40.145643°
LONGITUDE= -104.868083°

LATITUDE= 40°08'44.316\"
LONGITUDE= -104°52'05.100\"



SCALE: 1" = 1000'

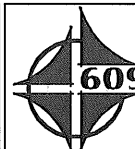
NOTES:

1. ▲ INDICATES FOUND SECTION CORNER
2. ● INDICATES CALCULATED CORNER
3. BEARINGS, DISTANCES, AND OFFSETS ARE BASED ON COLORADO COORDINATE SYSTEM 1983, NORTH ZONE
4. COMBINED SCALE FACTOR: .99972297
5. N / E COORDINATES ARE BASED ON UTM COORDINATE SYSTEM NAD83, ZONE 13
6. LATITUDE AND LONGITUDE COORDINATES ARE NAD83 (CORS96)(EPOCH:2002)
7. THIS EXHIBIT DOES NOT REPRESENT A LAND SURVEY PLAT OR IMPROVEMENT SURVEY PLAT AS DEFINED BY C.R.S. 38-51-102 AND CANNOT BE RELIED UPON TO DETERMINE OWNERSHIP.

WELL PAD - BUTTERBALL 37N-10HZ

BUTTERBALL 38N-10HZ
SPACING UNIT EXHIBIT
50' FNL & 190' FEL NENE (HEEL)
100' FSL & 235' FEL SESE (BOTTOM)
LOCATED IN SECTION 10
T2N, R67W, 6TH P.M.
WELD COUNTY, COLORADO

Kerr-McGee Oil &
Gas Onshore L.P.
1099 18th Street
Denver, Colorado 80202



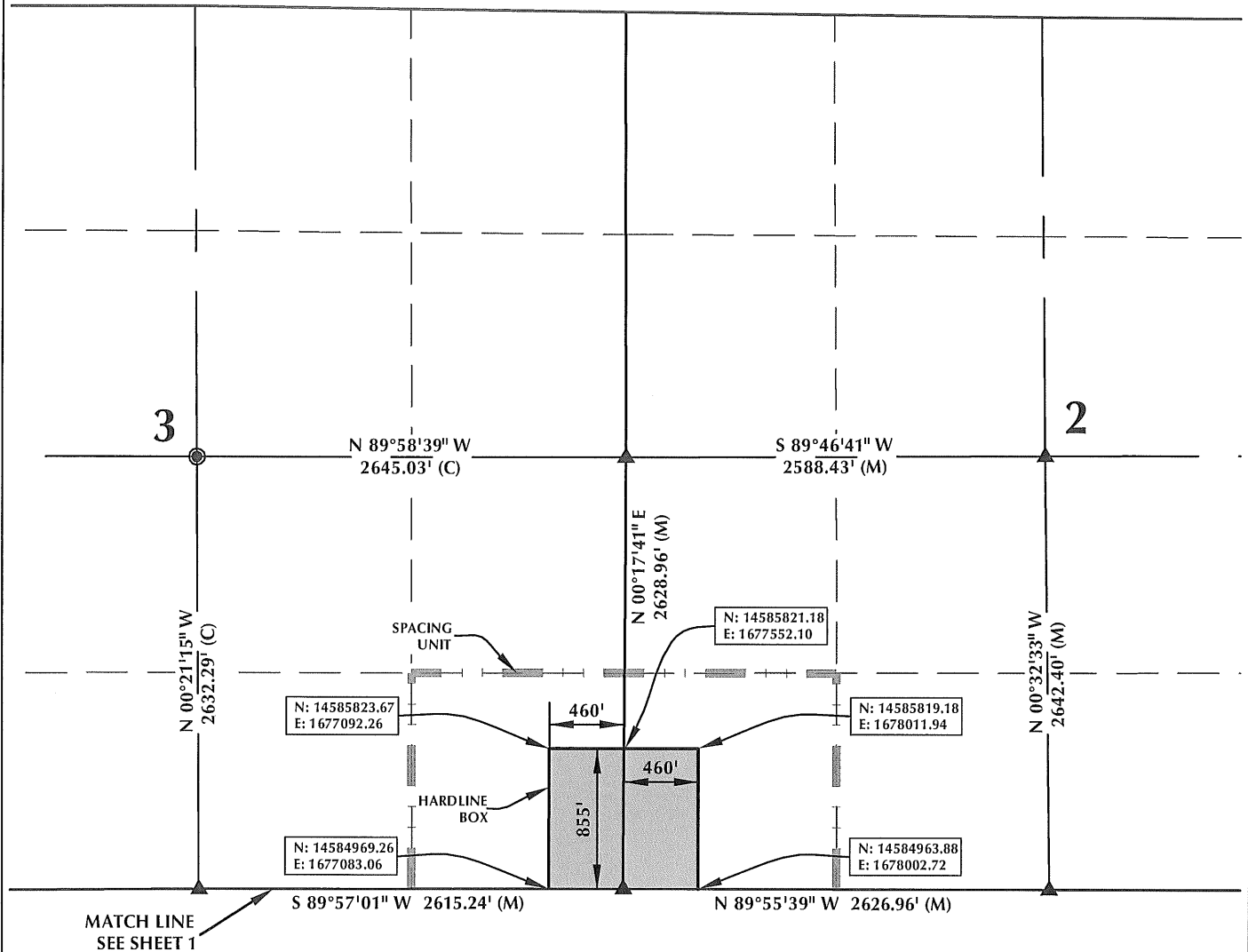
CONSULTING, LLC

SHERIDAN OFFICE
2155 North Main Street
Sheridan, Wyoming 82801
Phone 307-674-0609

LOVELAND OFFICE
1635 Foxtrail Drive, Suite 204
Loveland, Colorado 80538
Phone 970-776-4331

DRAFTED BY:	LMO	CHECKED BY:	BJR	SHEET NO:
DATE DRAFTED:	10/30/13	DATE SURVEYED:	10/1/13	2
REVISED:	11/11/14	FILE NAME:	13-90	2 OF 3

SPACING UNIT: BUTTERBALL 38N-10HZ T2N, R67W



HEEL LOCATION

N: 14,584,917.99'
E: 1,677,352.75'

LATITUDE= 40.159708°
LONGITUDE= -104.867801°

LATITUDE= 40°09'34.950"
LONGITUDE= -104°52'04.083"

AVAILABLE FOOTAGE

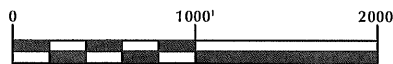
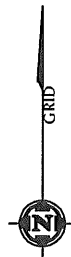
6985'

BOTTOM HOLE LOCATION

N: 14,579,796.15'
E: 1,677,281.43'

LATITUDE= 40.145643°
LONGITUDE= -104.868083°

LATITUDE= 40°08'44.316"
LONGITUDE= -104°52'05.100"



SCALE: 1" = 1000'

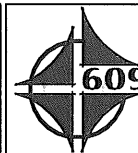
NOTES:

1. INDICATES FOUND SECTION CORNER
2. INDICATES CALCULATED CORNER
3. BEARINGS, DISTANCES, AND OFFSETS ARE BASED ON COLORADO COORDINATE SYSTEM 1983, NORTH ZONE
4. COMBINED SCALE FACTOR: .99972297
5. N / E COORDINATES ARE BASED ON UTM COORDINATE SYSTEM NAD83, ZONE 13
6. LATITUDE AND LONGITUDE COORDINATES ARE NAD83 (CORS96)(EPOCH:2002)
7. THIS EXHIBIT DOES NOT REPRESENT A LAND SURVEY PLAT OR IMPROVEMENT SURVEY PLAT AS DEFINED BY C.R.S. 38-51-102 AND CANNOT BE RELIED UPON TO DETERMINE OWNERSHIP.

WELL PAD - BUTTERBALL 37N-10HZ

BUTTERBALL 38N-10HZ
SPACING UNIT EXHIBIT
50' FNL & 190' FEL NENE (HEEL)
100' FSL & 235' FEL SESE (BOTTOM)
LOCATED IN SECTION 10
T2N, R67W, 6TH P.M.
WELD COUNTY, COLORADO

Kerr-McGee Oil &
Gas Onshore L.P.
1099 18th Street
Denver, Colorado 80202



CONSULTING, LLC

SHERIDAN OFFICE
2155 North Main Street
Sheridan, Wyoming 82801
Phone 307-674-0609

LOVELAND OFFICE
1635 Foxtrail Drive, Suite 204
Loveland, Colorado 80538
Phone 970-776-4331

DRAFTED BY: LMO	CHECKED BY: BJR	SHEET NO: 3
DATE DRAFTED: 10/30/13	DATE SURVEYED: 10/1/13	3 OF 3
REVISED: 11/11/14	FILE NAME: 13-90	