



Kerr-McGee Oil & Gas Onshore LP

A subsidiary of Anadarko Petroleum Corporation

1099 18th Street
Denver, CO 80202
720-929-6000

November 19, 2014

Department of Natural Resources
Oil and Gas Conservation Commission
The Chancery Building
1120 Lincoln St., Suite 801
Denver, CO 80203

Re: **30 Day Certification Letter - 318A.e**
GRISWOLD 2C-11HZ
Township 1 North, Range 66 West, Section 11: SW/4SE/4
Unit Acreage: 240 acres
Unit Spacing: 01N-66W-02 SW/4SE/4
01N-66W-11 W/2E/2
01N-66W-12 NW/4NE/4
Weld County, Colorado

Ladies/Gentlemen:

Kerr-McGee Oil and Gas Onshore LP (“KMG”) hereby certifies to the Director that a thirty (30) day notice has been given by certified mail to all owners in the proposed wellbore spacing unit. We have not received any objections to such well location, proposed spacing unit, or additional producing formation. KMG hereby requests the Director to approve the boundary well.

If you have any questions or issues regarding this permit, please contact Cheryl Light at (720) 929-6461.

Very truly yours,

Kerr-McGee Oil and Gas Onshore LP

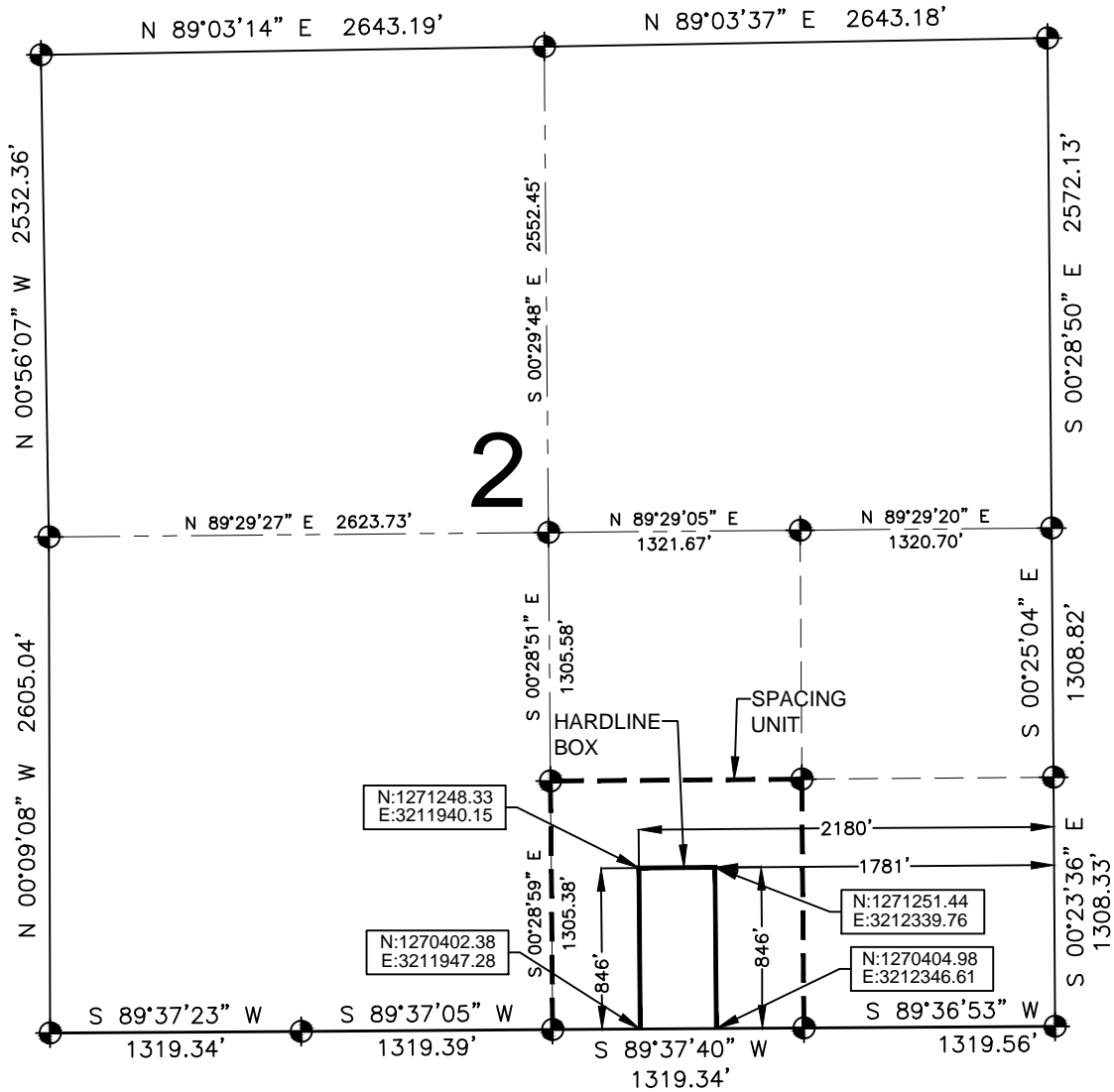
A handwritten signature in blue ink that reads "R Powers".

Ronett Powers
Regulatory Analyst II

Enclosure

HARDLINE EXHIBIT: GRISWOLD 2C-11HZ

SECTION 2, TOWNSHIP 1 NORTH, RANGE 66 WEST, 6TH P.M.



LEGEND

- = EXISTING MONUMENT ● = BOTTOM HOLE
- = PROPOSED HEEL BH = BOTTOM HOLE

HEEL LOCATION

NAD83
 LATITUDE= 40.058955°
 LONGITUDE= 104.741555°

 LATITUDE= 40°03'32.239"
 LONGITUDE= 104°44'29.600"

QRT/QRT SECTIONS WITHIN PATH OF THE HARDLINE

SWSE, SEC. 2

BOTTOM HOLE LOCATION

NAD83
 LATITUDE= 40.072884°
 LONGITUDE= 104.741507°

 LATITUDE= 40°04'22.382"
 LONGITUDE= 104°44'29.426"

AVAILABLE FOOTAGE

7038'



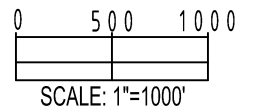
NOTES:
 1. THIS DOCUMENT IS NOT A LAND SURVEY PLAT OR IMPROVEMENT SURVEY PLAT. THIS DOCUMENT DOES NOT REFLECT A FIELD SURVEY. SECTION BREAKDOWN, MONUMENTATION AND HORIZONTAL POSITIONS SHOWN ARE BASED ON THE HEEL AND BOTTOM HOLE LOCATION PROVIDED BY ANADARKO PETROLEUM CORPORATION

PREPARED BY:

PFS
 Petroleum Field Services, LLC
 7535 Hilltop Circle
 Denver, CO 80221

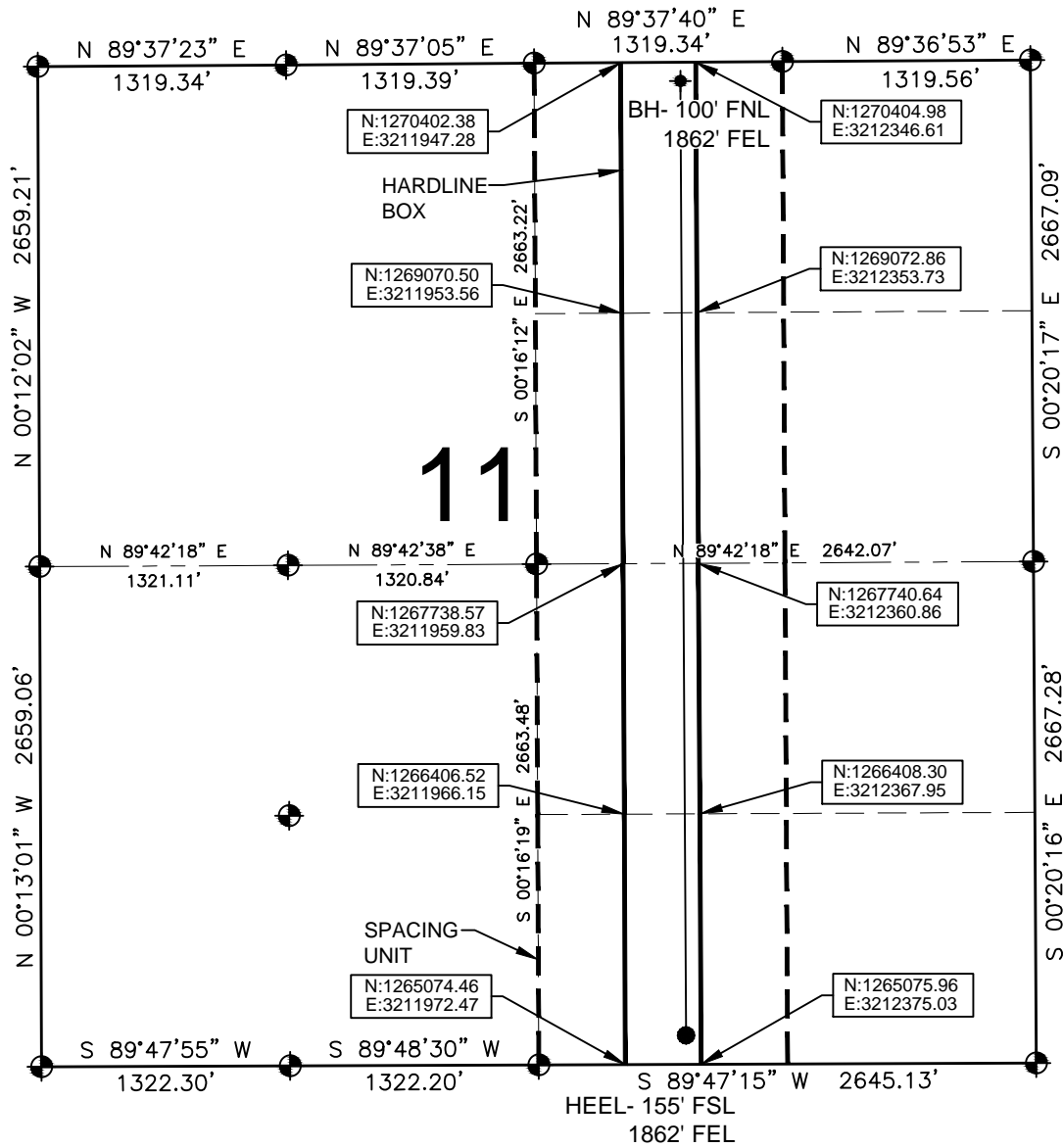
SHEET 1 OF 3

DRAWING DATE: 10-20-14		HEEL LOCATION: SW 1/4, SE 1/4, SEC. 11, T1N, R66W, 6TH P.M. WELD COUNTY, COLORADO	
BY: SMF	CHECKED MDCL		



HARDLINE EXHIBIT: GRISWOLD 2C-11HZ

SECTION 11, TOWNSHIP 1 NORTH, RANGE 66 WEST, 6TH P.M.



LEGEND

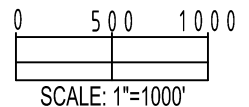
- ⊕ = EXISTING MONUMENT
- ⊙ = PROPOSED HEEL
- ⚬ = BOTTOM HOLE
- BH = BOTTOM HOLE

QRT/QRT SECTIONS WITHIN PATH OF THE HARDLINE

- SWSE, SEC. 11
- NWSE, SEC. 11
- SWNE, SEC. 11
- NWNE, SEC. 11

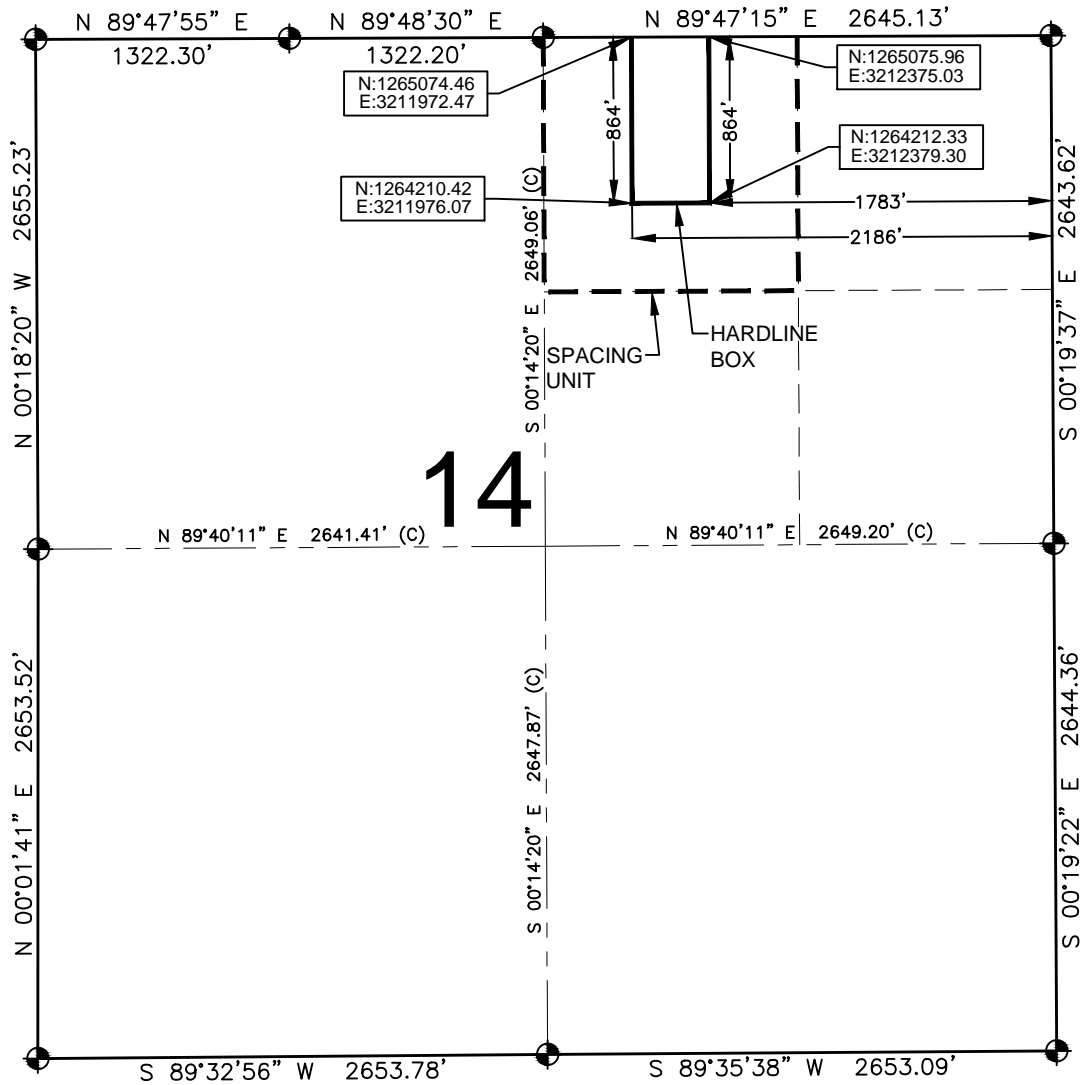
NOTES:

- THIS DOCUMENT IS NOT A LAND SURVEY PLAT OR IMPROVEMENT SURVEY PLAT. THIS DOCUMENT DOES NOT REFLECT A FIELD SURVEY. SECTION BREAKDOWN, MONUMENTATION AND HORIZONTAL POSITIONS SHOWN ARE BASED ON THE HEEL AND BOTTOM HOLE LOCATION PROVIDED BY ANADARKO PETROLEUM CORPORATION



HARDLINE EXHIBIT: GRISWOLD 2C-11HZ

SECTION 14, TOWNSHIP 1 NORTH, RANGE 66 WEST, 6TH P.M.



LEGEND

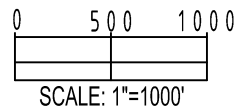
- ⊙ = EXISTING MONUMENT
- ⊙ = PROPOSED HEEL
- ⊙ = BOTTOM HOLE
- BH = BOTTOM HOLE

QRT/QRT SECTIONS WITHIN PATH OF THE HARDLINE

NWNE, SEC. 14

NOTES:

- THIS DOCUMENT IS NOT A LAND SURVEY PLAT OR IMPROVEMENT SURVEY PLAT. THIS DOCUMENT DOES NOT REFLECT A FIELD SURVEY. SECTION BREAKDOWN, MONUMENTATION AND HORIZONTAL POSITIONS SHOWN ARE BASED ON THE HEEL AND BOTTOM HOLE LOCATION PROVIDED BY ANADARKO PETROLEUM CORPORATION



PREPARED BY:

PFS
Petroleum Field Services, LLC
7535 Hilltop Circle
Denver, CO 80221

SHEET 3 OF 3

DRAWING DATE: 10-20-14		HEEL LOCATION: SW 1/4, SE 1/4, SEC. 11, T1N, R66W, 6TH P.M.	
BY: SMF	CHECKED MDCL	WELD COUNTY, COLORADO	