

KERR-MCGEE OIL & GAS ONSHORE LP

Location: COLORADO Slot: SLOT#10 GRISWOLD 26N-11HZ (560'FSL & 1953'FEL, SEC.11)
 Field: WELD COUNTY (KERR MCGEE) Well: GRISWOLD 26N-11HZ
 Facility: SEC.11-T1N-R66W Wellbore: GRISWOLD 26N-11HZ PWB

Plot reference wellpath is GRISWOLD 26N-11HZ (PERMT REV-1) PWP	
True vertical depths are referenced to PERMT (17KB) (RKB)	Grid System: NAD83 / Lambert Colorado SP, Northern Zone (50 1), US feet
Measured depths are referenced to PERMT (17KB) (RKB)	North Reference: True north
PERMT (17KB) (RKB) to Mean Sea Level: 5142 feet	Scale: True distance
Mean Sea Level to Mud line (At Slot: SLOTS#10 GRISWOLD 26N-11HZ (560'FSL & 1953'FEL, SEC.11)): 0 feet	Depths are in feet
Coordinates are in feet referenced to Slot	Created by precain on 14/Oct/2014

Location Information

Facility Name	Grid East (US Ft)	Grid North (US Ft)	Latitude	Longitude		
SEC.11-T1N-R66W	3209320.605	1269845.229	40°04'18.091"N	104°45'07.348"W		
Slot	Local N (ft)	Local E (ft)	Grid East (US Ft)	Grid North (US Ft)	Latitude	Longitude
SLOTS#10 GRISWOLD 26N-11HZ (560'FSL & 1953'FEL, SEC.11)	-4234.32	2845.13	3212101.237	1265635.230	40°03'36.245"N	104°44'30.757"W
PERMT (17KB) (RKB) to Mud line (At Slot: SLOTS#10 GRISWOLD 26N-11HZ (560'FSL & 1953'FEL, SEC.11))					5142ft	
Mean Sea Level to Mud line (At Slot: SLOTS#10 GRISWOLD 26N-11HZ (560'FSL & 1953'FEL, SEC.11))					0ft	
PERMT (17KB) (RKB) to Mean Sea Level					5142ft	

Survey Program

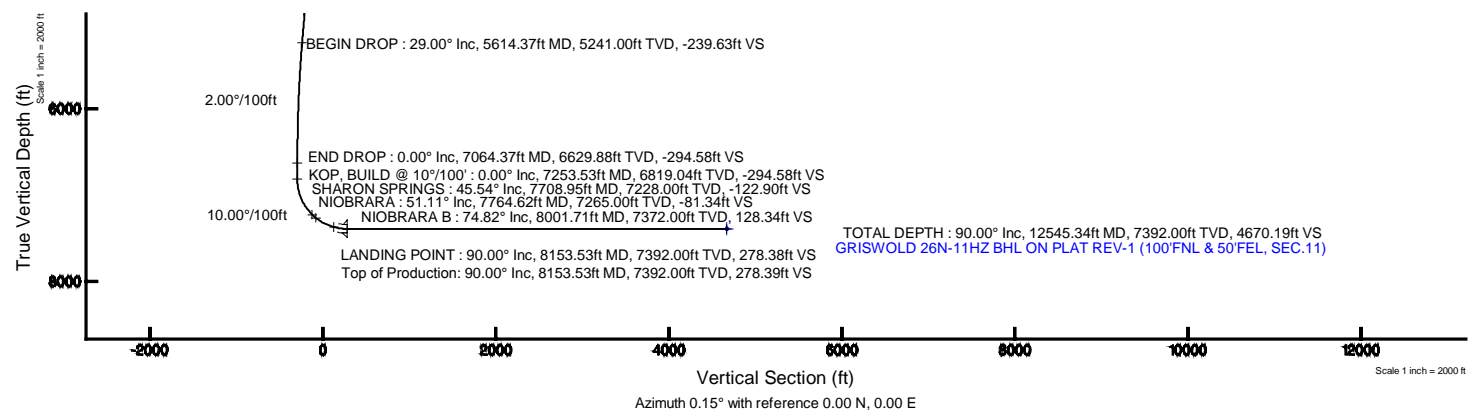
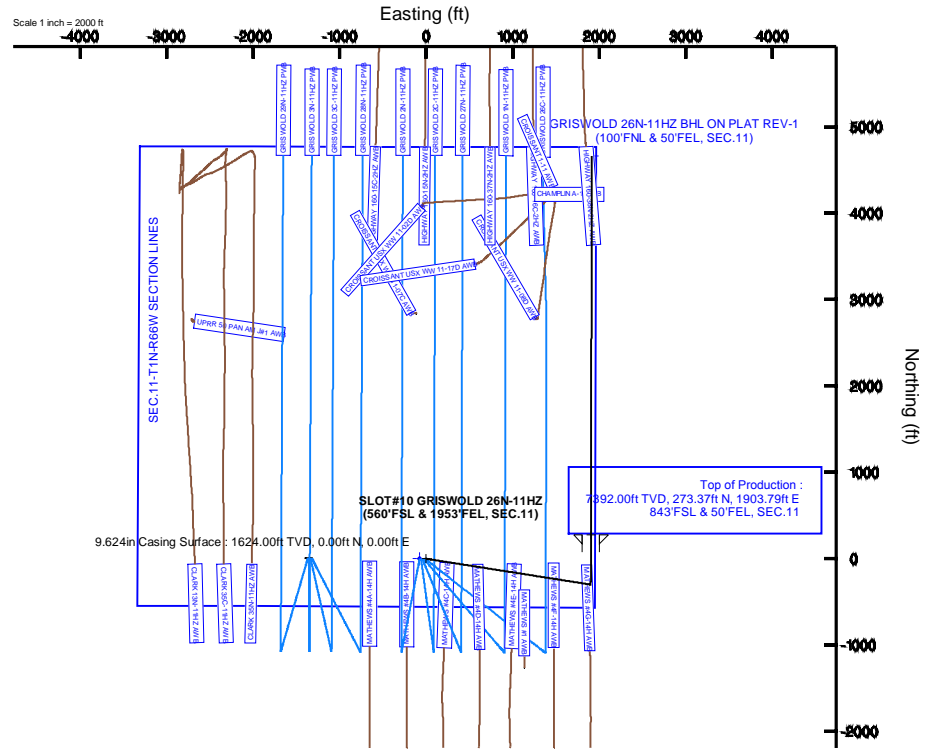
Start MD (ft)	End MD (ft)	Tool	Model	Log Name/Comment	Wellbore
17.00	12545.34	NavitTrak	NavitTrak (MAGCORR, IFR)		GRISWOLD 26N-11HZ PWB

Well Profile Data

Design Comment	MD (ft)	Inc (°)	Az (°)	TVD (ft)	Local N (ft)	Local E (ft)	DLS (°/100ft)	VS (ft)
TIE ON	17.00	0.000	98.950	17.00	0.00	0.00	0.00	0.00
BEGIN NUDGE	1674.00	0.000	98.950	1674.00	0.00	0.00	0.00	0.00
END NUDGE	3124.00	29.000	98.950	3062.88	-55.88	354.81	2.00	-54.94
BEGIN DROP	5614.37	29.000	98.950	5241.00	-243.71	1547.47	0.00	-239.63
END DROP	7064.37	0.000	0.151	6629.88	-299.59	1902.28	2.00	-294.58
KOP, BUILD @ 10°/100'	7253.53	0.000	0.151	6819.04	-299.59	1902.28	0.00	-294.58
LANDING POINT	8153.53	90.000	0.151	7392.00	273.37	1903.79	10.00	278.38
TOTAL DEPTH	12545.34	90.000	0.151	7392.00	4665.16	1915.38	0.00	4670.19

Targets

Name	MD (ft)	TVD (ft)	Local N (ft)	Local E (ft)	Grid East (US Ft)	Grid North (US Ft)	Latitude	Longitude
SEC.11-T1N-R66W SECTION LINES		0.00	0.30	-75.03	3212126.21	1265634.89	40°03'36.248"N	104°44'31.722"W
GRISWOLD 26N-11HZ BHL ON PLAT REV-1 (100'FNL & 50'FEL, SEC.11)	12545.34	7392.00	4665.16	1915.38	3214076.59	1270316.41	40°04'22.348"N	104°44'06.119"W



Vertical Section (ft)
 Azimuth 0.15° with reference 0.00 N, 0.00 E

Scale 1 inch = 2000 ft

REFERENCE WELLPATH IDENTIFICATION			
Operator	KERR-MCGEE OIL & GAS ONSHORE LP	Slot	SLOT#10 GRISWOLD 26N-11HZ (560'FSL & 1953'FEL, SEC.11)
Area	COLORADO	Well	GRISWOLD 26N-11HZ
Field	WELD COUNTY (KERR MCGEE)	Wellbore	GRISWOLD 26N-11HZ PWB
Facility	SEC.11-T1N-R66W		

REPORT SETUP INFORMATION			
Projection System	NAD83 / Lambert Colorado SP, Northern Zone (501), US feet	Software System	WellArchitect® 4.0.0
North Reference	True	User	Precain
Scale	0.999962	Report Generated	14/Oct/2014 at 09:47
Convergence at slot	n/a	Database/Source file	WellArchitectDB/GRISWOLD_26N-11HZ_PWB.xml

WELLPATH LOCATION						
	Local coordinates		Grid coordinates		Geographic coordinates	
	North[ft]	East[ft]	Easting[US ft]	Northing[US ft]	Latitude	Longitude
Slot Location	-4234.32	2845.13	3212201.24	1265635.23	40°03'36.245"N	104°44'30.757"W
Facility Reference Pt			3209320.61	1269845.23	40°04'18.091"N	104°45'07.348"W
Field Reference Pt			3197771.84	1268891.29	40°04'09.600"N	104°47'36.000"W

WELLPATH DATUM			
Calculation method	Minimum curvature	PERMIT (17'KB) (RKB) to Facility Vertical Datum	5142.00ft
Horizontal Reference Pt	Slot	PERMIT (17'KB) (RKB) to Mean Sea Level	5142.00ft
Vertical Reference Pt	PERMIT (17'KB) (RKB)	PERMIT (17'KB) (RKB) to Mud Line at Slot (SLOT#10 GRISWOLD 26N-11HZ (560'FSL & 1953'FEL, SEC.11))	5142.00ft
MD Reference Pt	PERMIT (17'KB) (RKB)	Section Origin	N 0.00, E 0.00 ft
Field Vertical Reference	Mean Sea Level	Section Azimuth	0.15°

REFERENCE WELLPATH IDENTIFICATION			
Operator	KERR-MCGEE OIL & GAS ONSHORE LP	Slot	SLOT#10 GRISWOLD 26N-11HZ (560'FSL & 1953'FEL, SEC.11)
Area	COLORADO	Well	GRISWOLD 26N-11HZ
Field	WELD COUNTY (KERR MCGEE)	Wellbore	GRISWOLD 26N-11HZ PWB
Facility	SEC.11-T1N-R66W		

WELLPATH DATA (141 stations) † = interpolated/extrapolated station										
MD [ft]	Inclination [°]	Azimuth [°]	TVD [ft]	Vert Sect [ft]	North [ft]	East [ft]	Latitude	Longitude	DLS [°/100ft]	Comments
0.00†	0.000	98.950	0.00	0.00	0.00	0.00	40°03'36.245"N	104°44'30.757"W	0.00	
17.00	0.000	98.950	17.00	0.00	0.00	0.00	40°03'36.245"N	104°44'30.757"W	0.00	TIE ON
117.00†	0.000	98.950	117.00	0.00	0.00	0.00	40°03'36.245"N	104°44'30.757"W	0.00	
217.00†	0.000	98.950	217.00	0.00	0.00	0.00	40°03'36.245"N	104°44'30.757"W	0.00	
317.00†	0.000	98.950	317.00	0.00	0.00	0.00	40°03'36.245"N	104°44'30.757"W	0.00	
417.00†	0.000	98.950	417.00	0.00	0.00	0.00	40°03'36.245"N	104°44'30.757"W	0.00	
517.00†	0.000	98.950	517.00	0.00	0.00	0.00	40°03'36.245"N	104°44'30.757"W	0.00	
617.00†	0.000	98.950	617.00	0.00	0.00	0.00	40°03'36.245"N	104°44'30.757"W	0.00	
717.00†	0.000	98.950	717.00	0.00	0.00	0.00	40°03'36.245"N	104°44'30.757"W	0.00	
817.00†	0.000	98.950	817.00	0.00	0.00	0.00	40°03'36.245"N	104°44'30.757"W	0.00	
890.00†	0.000	98.950	890.00	0.00	0.00	0.00	40°03'36.245"N	104°44'30.757"W	0.00	BASE FOX HILLS
917.00†	0.000	98.950	917.00	0.00	0.00	0.00	40°03'36.245"N	104°44'30.757"W	0.00	
1017.00†	0.000	98.950	1017.00	0.00	0.00	0.00	40°03'36.245"N	104°44'30.757"W	0.00	
1117.00†	0.000	98.950	1117.00	0.00	0.00	0.00	40°03'36.245"N	104°44'30.757"W	0.00	
1217.00†	0.000	98.950	1217.00	0.00	0.00	0.00	40°03'36.245"N	104°44'30.757"W	0.00	
1317.00†	0.000	98.950	1317.00	0.00	0.00	0.00	40°03'36.245"N	104°44'30.757"W	0.00	
1417.00†	0.000	98.950	1417.00	0.00	0.00	0.00	40°03'36.245"N	104°44'30.757"W	0.00	
1517.00†	0.000	98.950	1517.00	0.00	0.00	0.00	40°03'36.245"N	104°44'30.757"W	0.00	
1617.00†	0.000	98.950	1617.00	0.00	0.00	0.00	40°03'36.245"N	104°44'30.757"W	0.00	
1624.00†	0.000	98.950	1624.00	0.00	0.00	0.00	40°03'36.245"N	104°44'30.757"W	0.00	SURFACE CSG SETTING DEPTH
1674.00	0.000	98.950	1674.00	0.00	0.00	0.00	40°03'36.245"N	104°44'30.757"W	0.00	BEGIN NUDGE
1717.00†	0.860	98.950	1717.00	-0.05	-0.05	0.32	40°03'36.245"N	104°44'30.753"W	2.00	
1817.00†	2.860	98.950	1816.94	-0.55	-0.56	3.52	40°03'36.240"N	104°44'30.712"W	2.00	
1917.00†	4.860	98.950	1916.71	-1.58	-1.60	10.17	40°03'36.229"N	104°44'30.626"W	2.00	
2017.00†	6.860	98.950	2016.18	-3.14	-3.19	20.26	40°03'36.213"N	104°44'30.496"W	2.00	
2117.00†	8.860	98.950	2115.24	-5.23	-5.32	33.77	40°03'36.192"N	104°44'30.323"W	2.00	
2217.00†	10.860	98.950	2213.75	-7.85	-7.98	50.68	40°03'36.166"N	104°44'30.105"W	2.00	
2317.00†	12.860	98.950	2311.61	-10.99	-11.18	70.98	40°03'36.135"N	104°44'29.844"W	2.00	
2417.00†	14.860	98.950	2408.70	-14.66	-14.91	94.65	40°03'36.098"N	104°44'29.540"W	2.00	
2517.00†	16.860	98.950	2504.89	-18.84	-19.16	121.64	40°03'36.056"N	104°44'29.193"W	2.00	
2617.00†	18.860	98.950	2600.06	-23.53	-23.93	151.93	40°03'36.009"N	104°44'28.803"W	2.00	
2717.00†	20.860	98.950	2694.11	-28.72	-29.21	185.49	40°03'35.956"N	104°44'28.371"W	2.00	
2817.00†	22.860	98.950	2786.92	-34.42	-35.01	222.27	40°03'35.899"N	104°44'27.898"W	2.00	
2917.00†	24.860	98.950	2878.36	-40.61	-41.30	262.23	40°03'35.837"N	104°44'27.385"W	2.00	
3017.00†	26.860	98.950	2968.35	-47.28	-48.08	305.31	40°03'35.770"N	104°44'26.830"W	2.00	
3117.00†	28.860	98.950	3056.75	-54.43	-55.35	351.47	40°03'35.698"N	104°44'26.237"W	2.00	
3124.00	29.000	98.950	3062.88	-54.94	-55.88	354.81	40°03'35.693"N	104°44'26.194"W	2.00	END NUDGE
3217.00†	29.000	98.950	3144.22	-61.84	-62.89	399.35	40°03'35.623"N	104°44'25.621"W	0.00	
3317.00†	29.000	98.950	3231.68	-69.26	-70.44	447.24	40°03'35.549"N	104°44'25.005"W	0.00	
3417.00†	29.000	98.950	3319.14	-76.67	-77.98	495.13	40°03'35.474"N	104°44'24.389"W	0.00	
3517.00†	29.000	98.950	3406.60	-84.09	-85.52	543.03	40°03'35.400"N	104°44'23.773"W	0.00	
3617.00†	29.000	98.950	3494.06	-91.51	-93.06	590.92	40°03'35.325"N	104°44'23.157"W	0.00	
3717.00†	29.000	98.950	3581.53	-98.92	-100.61	638.81	40°03'35.251"N	104°44'22.541"W	0.00	
3817.00†	29.000	98.950	3668.99	-106.34	-108.15	686.70	40°03'35.176"N	104°44'21.925"W	0.00	
3917.00†	29.000	98.950	3756.45	-113.75	-115.69	734.59	40°03'35.102"N	104°44'21.310"W	0.00	

REFERENCE WELLPATH IDENTIFICATION				
Operator	KERR-MCGEE OIL & GAS ONSHORE LP		Slot	SLOT#10 GRISWOLD 26N-11HZ (560'FSL & 1953'FEL, SEC.11)
Area	COLORADO		Well	GRISWOLD 26N-11HZ
Field	WELD COUNTY (KERR MCGEE)		Wellbore	GRISWOLD 26N-11HZ PWB
Facility	SEC.11-T1N-R66W			

WELLPATH DATA (141 stations) † = interpolated/extrapolated station

MD [ft]	Inclination [°]	Azimuth [°]	TVD [ft]	Vert Sect [ft]	North [ft]	East [ft]	Latitude	Longitude	DLS [°/100ft]	Comments
4017.00†	29.000	98.950	3843.91	-121.17	-123.23	782.48	40°03'35.027"N	104°44'20.694"W	0.00	
4117.00†	29.000	98.950	3931.37	-128.59	-130.77	830.37	40°03'34.953"N	104°44'20.078"W	0.00	
4217.00†	29.000	98.950	4018.84	-136.00	-138.32	878.26	40°03'34.878"N	104°44'19.462"W	0.00	
4317.00†	29.000	98.950	4106.30	-143.42	-145.86	926.15	40°03'34.803"N	104°44'18.846"W	0.00	
4417.00†	29.000	98.950	4193.76	-150.83	-153.40	974.04	40°03'34.729"N	104°44'18.230"W	0.00	
4517.00†	29.000	98.950	4281.22	-158.25	-160.94	1021.93	40°03'34.654"N	104°44'17.614"W	0.00	
4617.00†	29.000	98.950	4368.68	-165.67	-168.49	1069.82	40°03'34.580"N	104°44'16.998"W	0.00	
4641.37†	29.000	98.950	4390.00	-167.47	-170.32	1081.49	40°03'34.562"N	104°44'16.848"W	0.00	PARKMAN
4717.00†	29.000	98.950	4456.15	-173.08	-176.03	1117.71	40°03'34.505"N	104°44'16.382"W	0.00	
4817.00†	29.000	98.950	4543.61	-180.50	-183.57	1165.60	40°03'34.431"N	104°44'15.766"W	0.00	
4917.00†	29.000	98.950	4631.07	-187.91	-191.11	1213.49	40°03'34.356"N	104°44'15.150"W	0.00	
4979.80†	29.000	98.950	4686.00	-192.57	-195.85	1243.57	40°03'34.309"N	104°44'14.764"W	0.00	SUSSEX
5017.00†	29.000	98.950	4718.53	-195.33	-198.66	1261.39	40°03'34.282"N	104°44'14.535"W	0.00	
5117.00†	29.000	98.950	4805.99	-202.75	-206.20	1309.28	40°03'34.207"N	104°44'13.919"W	0.00	
5217.00†	29.000	98.950	4893.46	-210.16	-213.74	1357.17	40°03'34.132"N	104°44'13.303"W	0.00	
5317.00†	29.000	98.950	4980.92	-217.58	-221.28	1405.06	40°03'34.058"N	104°44'12.687"W	0.00	
5417.00†	29.000	98.950	5068.38	-224.99	-228.82	1452.95	40°03'33.983"N	104°44'12.071"W	0.00	
5517.00†	29.000	98.950	5155.84	-232.41	-236.37	1500.84	40°03'33.909"N	104°44'11.455"W	0.00	
5614.37	29.000	98.950	5241.00	-239.63	-243.71	1547.47	40°03'33.836"N	104°44'10.855"W	0.00	BEGIN DROP
5617.00†	28.947	98.950	5243.30	-239.83	-243.91	1548.73	40°03'33.834"N	104°44'10.839"W	2.00	
5717.00†	26.947	98.950	5331.64	-247.00	-251.20	1595.02	40°03'33.762"N	104°44'10.244"W	2.00	
5817.00†	24.947	98.950	5421.55	-253.69	-258.01	1638.24	40°03'33.695"N	104°44'09.688"W	2.00	
5917.00†	22.947	98.950	5512.94	-259.90	-264.32	1678.33	40°03'33.632"N	104°44'09.172"W	2.00	
6017.00†	20.947	98.950	5605.69	-265.61	-270.14	1715.25	40°03'33.575"N	104°44'08.698"W	2.00	
6117.00†	18.947	98.950	5699.68	-270.83	-275.44	1748.95	40°03'33.522"N	104°44'08.264"W	2.00	
6217.00†	16.947	98.950	5794.81	-275.55	-280.24	1779.39	40°03'33.475"N	104°44'07.873"W	2.00	
6317.00†	14.947	98.950	5890.96	-279.75	-284.51	1806.53	40°03'33.433"N	104°44'07.524"W	2.00	
6417.00†	12.947	98.950	5988.01	-283.43	-288.26	1830.34	40°03'33.396"N	104°44'07.217"W	2.00	
6517.00†	10.947	98.950	6085.84	-286.60	-291.48	1850.78	40°03'33.364"N	104°44'06.955"W	2.00	
6617.00†	8.947	98.950	6184.33	-289.24	-294.17	1867.85	40°03'33.337"N	104°44'06.735"W	2.00	
6717.00†	6.947	98.950	6283.36	-291.36	-296.32	1881.50	40°03'33.316"N	104°44'06.559"W	2.00	
6817.00†	4.947	98.950	6382.82	-292.94	-297.93	1891.74	40°03'33.300"N	104°44'06.428"W	2.00	
6917.00†	2.947	98.950	6482.58	-294.00	-299.00	1898.54	40°03'33.289"N	104°44'06.340"W	2.00	
7017.00†	0.947	98.950	6582.51	-294.52	-299.53	1901.90	40°03'33.284"N	104°44'06.297"W	2.00	
7064.37	0.000	0.151	6629.88	-294.58	-299.59	1902.28	40°03'33.284"N	104°44'06.292"W	2.00	END DROP
7117.00†	0.000	0.151	6682.51	-294.58	-299.59	1902.28	40°03'33.284"N	104°44'06.292"W	0.00	
7217.00†	0.000	0.151	6782.51	-294.58	-299.59	1902.28	40°03'33.284"N	104°44'06.292"W	0.00	
7253.53	0.000	0.151	6819.04	-294.58	-299.59	1902.28	40°03'33.284"N	104°44'06.292"W	0.00	KOP, BUILD @ 10°/100'
7317.00†	6.347	0.151	6882.38	-291.06	-296.08	1902.29	40°03'33.318"N	104°44'06.292"W	10.00	
7417.00†	16.347	0.151	6980.30	-271.41	-276.43	1902.34	40°03'33.513"N	104°44'06.291"W	10.00	
7517.00†	26.347	0.151	7073.32	-235.06	-240.07	1902.44	40°03'33.872"N	104°44'06.290"W	10.00	
7617.00†	36.347	0.151	7158.62	-183.10	-188.11	1902.58	40°03'34.385"N	104°44'06.288"W	10.00	
7708.95†	45.543	0.151	7228.00	-122.90	-127.92	1902.73	40°03'34.980"N	104°44'06.286"W	10.00	SHARON SPRINGS
7717.00†	46.347	0.151	7233.59	-117.12	-122.14	1902.75	40°03'35.037"N	104°44'06.286"W	10.00	
7764.62†	51.110	0.151	7265.00	-81.34	-86.35	1902.84	40°03'35.391"N	104°44'06.285"W	10.00	NIOBRARA

REFERENCE WELLPATH IDENTIFICATION			
Operator	KERR-MCGEE OIL & GAS ONSHORE LP	Slot	SLOT#10 GRISWOLD 26N-11HZ (560'FSL & 1953'FEL, SEC.11)
Area	COLORADO	Well	GRISWOLD 26N-11HZ
Field	WELD COUNTY (KERR MCGEE)	Wellbore	GRISWOLD 26N-11HZ PWB
Facility	SEC.11-T1N-R66W		

WELLPATH DATA (141 stations) † = interpolated/extrapolated station										
MD [ft]	Inclination [°]	Azimuth [°]	TVD [ft]	Vert Sect [ft]	North [ft]	East [ft]	Latitude	Longitude	DLS [°/100ft]	Comments
7817.00†	56.347	0.151	7295.97	-39.13	-44.14	1902.96	40°03'35.808"N	104°44'06.283"W	10.00	
7917.00†	66.347	0.151	7343.86	48.52	43.50	1903.19	40°03'36.674"N	104°44'06.280"W	10.00	
8001.71†	74.818	0.151	7372.00	128.34	123.32	1903.40	40°03'37.463"N	104°44'06.277"W	10.00	NIOBRARA B
8017.00†	76.347	0.151	7375.81	143.14	138.13	1903.44	40°03'37.609"N	104°44'06.277"W	10.00	
8117.00†	86.347	0.151	7390.83	241.88	236.86	1903.70	40°03'38.585"N	104°44'06.273"W	10.00	
8153.53	90.000	0.151	7392.00	278.38	273.37	1903.79	40°03'38.946"N	104°44'06.272"W	10.00	LANDING POINT
8217.00†	90.000	0.151	7392.00	341.86	336.84	1903.96	40°03'39.573"N	104°44'06.270"W	0.00	
8317.00†	90.000	0.151	7392.00	441.86	436.84	1904.22	40°03'40.561"N	104°44'06.267"W	0.00	
8417.00†	90.000	0.151	7392.00	541.86	536.84	1904.49	40°03'41.549"N	104°44'06.263"W	0.00	
8517.00†	90.000	0.151	7392.00	641.86	636.84	1904.75	40°03'42.538"N	104°44'06.260"W	0.00	
8617.00†	90.000	0.151	7392.00	741.86	736.84	1905.01	40°03'43.526"N	104°44'06.256"W	0.00	
8717.00†	90.000	0.151	7392.00	841.86	836.84	1905.28	40°03'44.514"N	104°44'06.253"W	0.00	
8817.00†	90.000	0.151	7392.00	941.86	936.84	1905.54	40°03'45.502"N	104°44'06.249"W	0.00	
8917.00†	90.000	0.151	7392.00	1041.86	1036.84	1905.81	40°03'46.491"N	104°44'06.246"W	0.00	
9017.00†	90.000	0.151	7392.00	1141.86	1136.84	1906.07	40°03'47.479"N	104°44'06.242"W	0.00	
9117.00†	90.000	0.151	7392.00	1241.86	1236.84	1906.33	40°03'48.467"N	104°44'06.239"W	0.00	
9217.00†	90.000	0.151	7392.00	1341.86	1336.84	1906.60	40°03'49.455"N	104°44'06.235"W	0.00	
9317.00†	90.000	0.151	7392.00	1441.86	1436.84	1906.86	40°03'50.443"N	104°44'06.232"W	0.00	
9417.00†	90.000	0.151	7392.00	1541.86	1536.84	1907.12	40°03'51.432"N	104°44'06.228"W	0.00	
9517.00†	90.000	0.151	7392.00	1641.86	1636.84	1907.39	40°03'52.420"N	104°44'06.225"W	0.00	
9617.00†	90.000	0.151	7392.00	1741.86	1736.83	1907.65	40°03'53.408"N	104°44'06.221"W	0.00	
9717.00†	90.000	0.151	7392.00	1841.86	1836.83	1907.92	40°03'54.396"N	104°44'06.218"W	0.00	
9817.00†	90.000	0.151	7392.00	1941.86	1936.83	1908.18	40°03'55.384"N	104°44'06.214"W	0.00	
9917.00†	90.000	0.151	7392.00	2041.86	2036.83	1908.44	40°03'56.373"N	104°44'06.211"W	0.00	
10017.00†	90.000	0.151	7392.00	2141.86	2136.83	1908.71	40°03'57.361"N	104°44'06.207"W	0.00	
10117.00†	90.000	0.151	7392.00	2241.86	2236.83	1908.97	40°03'58.349"N	104°44'06.204"W	0.00	
10217.00†	90.000	0.151	7392.00	2341.86	2336.83	1909.23	40°03'59.337"N	104°44'06.200"W	0.00	
10317.00†	90.000	0.151	7392.00	2441.86	2436.83	1909.50	40°04'00.326"N	104°44'06.197"W	0.00	
10417.00†	90.000	0.151	7392.00	2541.86	2536.83	1909.76	40°04'01.314"N	104°44'06.193"W	0.00	
10517.00†	90.000	0.151	7392.00	2641.86	2636.83	1910.03	40°04'02.302"N	104°44'06.190"W	0.00	
10617.00†	90.000	0.151	7392.00	2741.86	2736.83	1910.29	40°04'03.290"N	104°44'06.186"W	0.00	
10717.00†	90.000	0.151	7392.00	2841.86	2836.83	1910.55	40°04'04.278"N	104°44'06.183"W	0.00	
10817.00†	90.000	0.151	7392.00	2941.86	2936.83	1910.82	40°04'05.267"N	104°44'06.179"W	0.00	
10917.00†	90.000	0.151	7392.00	3041.86	3036.83	1911.08	40°04'06.255"N	104°44'06.176"W	0.00	
11017.00†	90.000	0.151	7392.00	3141.86	3136.83	1911.35	40°04'07.243"N	104°44'06.172"W	0.00	
11117.00†	90.000	0.151	7392.00	3241.86	3236.83	1911.61	40°04'08.231"N	104°44'06.169"W	0.00	
11217.00†	90.000	0.151	7392.00	3341.86	3336.83	1911.87	40°04'09.220"N	104°44'06.165"W	0.00	
11317.00†	90.000	0.151	7392.00	3441.86	3436.83	1912.14	40°04'10.208"N	104°44'06.162"W	0.00	
11417.00†	90.000	0.151	7392.00	3541.86	3536.83	1912.40	40°04'11.196"N	104°44'06.158"W	0.00	
11517.00†	90.000	0.151	7392.00	3641.86	3636.83	1912.67	40°04'12.184"N	104°44'06.155"W	0.00	
11617.00†	90.000	0.151	7392.00	3741.86	3736.83	1912.93	40°04'13.172"N	104°44'06.151"W	0.00	
11717.00†	90.000	0.151	7392.00	3841.86	3836.83	1913.19	40°04'14.161"N	104°44'06.148"W	0.00	
11817.00†	90.000	0.151	7392.00	3941.86	3936.83	1913.46	40°04'15.149"N	104°44'06.144"W	0.00	
11917.00†	90.000	0.151	7392.00	4041.86	4036.83	1913.72	40°04'16.137"N	104°44'06.141"W	0.00	
12017.00†	90.000	0.151	7392.00	4141.86	4136.83	1913.99	40°04'17.125"N	104°44'06.137"W	0.00	

REFERENCE WELLPATH IDENTIFICATION				
Operator	KERR-MCGEE OIL & GAS ONSHORE LP		Slot	SLOT#10 GRISWOLD 26N-11HZ (560'FSL & 1953'FEL, SEC.11)
Area	COLORADO		Well	GRISWOLD 26N-11HZ
Field	WELD COUNTY (KERR MCGEE)		Wellbore	GRISWOLD 26N-11HZ PWB
Facility	SEC.11-T1N-R66W			

WELLPATH DATA (141 stations) † = interpolated/extrapolated station										
MD [ft]	Inclination [°]	Azimuth [°]	TVD [ft]	Vert Sect [ft]	North [ft]	East [ft]	Latitude	Longitude	DLS ["/100ft]	Comments
12117.00†	90.000	0.151	7392.00	4241.86	4236.83	1914.25	40°04'18.113"N	104°44'06.134"W	0.00	
12217.00†	90.000	0.151	7392.00	4341.86	4336.83	1914.52	40°04'19.102"N	104°44'06.130"W	0.00	
12317.00†	90.000	0.151	7392.00	4441.86	4436.83	1914.78	40°04'20.090"N	104°44'06.127"W	0.00	
12417.00†	90.000	0.151	7392.00	4541.86	4536.82	1915.04	40°04'21.078"N	104°44'06.123"W	0.00	
12517.00†	90.000	0.151	7392.00	4641.86	4636.82	1915.31	40°04'22.066"N	104°44'06.120"W	0.00	
12545.34	90.000	0.151	7392.00 ¹	4670.19	4665.16	1915.38	40°04'22.346"N	104°44'06.119"W	0.00	TOTAL DEPTH

HOLE & CASING SECTIONS - Ref Wellbore: GRISWOLD 26N-11HZ PWB Ref Wellpath: GRISWOLD 26N-11HZ (PERMIT REV-1) PWP									
String/Diameter	Start MD [ft]	End MD [ft]	Interval [ft]	Start TVD [ft]	End TVD [ft]	Start N/S [ft]	Start E/W [ft]	End N/S [ft]	End E/W [ft]
13.5in Open Hole	17.00	1624.00	1607.00	17.00	1624.00	0.00	0.00	0.00	0.00
9.624in Casing Surface	17.00	1624.00	1607.00	17.00	1624.00	0.00	0.00	0.00	0.00
8.75in Open Hole	1624.00	8153.53	6529.53	1624.00	7392.00	0.00	0.00	273.37	1903.79
Top of Production	17.00	8153.53	8136.53	17.00	7392.00	0.00	0.00	273.37	1903.79
6.125in Open Hole	8153.53	12545.34	4391.81	7392.00	NA	273.37	1903.79	NA	NA
4.5in Casing Production	17.00	12545.34	12528.34	17.00	NA	0.00	0.00	NA	NA

TARGETS									
Name	MD [ft]	TVD [ft]	North [ft]	East [ft]	Grid East [US ft]	Grid North [US ft]	Latitude	Longitude	Shape
SEC.11-T1N-R66W SECTION LINES		0.00	0.30	-75.03	3212126.21	1265634.89	40°03'36.248"N	104°44'31.722"W	polygon
1) GRISWOLD 26N-11HZ BHL ON PLAT REV-1 (100'FNL & 50'FEL, SEC.11)	12545.34	7392.00	4665.16	1915.38	3214076.59	1270316.41	40°04'22.346"N	104°44'06.119"W	point

SURVEY PROGRAM - Ref Wellbore: GRISWOLD 26N-11HZ PWB Ref Wellpath: GRISWOLD 26N-11HZ (PERMIT REV-1) PWP				
Start MD [ft]	End MD [ft]	Positional Uncertainty Model	Log Name/Comment	Wellbore
17.00	12545.34	NaviTrak (MAGCORR,IFR)		GRISWOLD 26N-11HZ PWB

REFERENCE WELLPATH IDENTIFICATION			
Operator	KERR-MCGEE OIL & GAS ONSHORE LP	Slot	SLOT#10 GRISWOLD 26N-11HZ (560'FSL & 1953'FEL, SEC.11)
Area	COLORADO	Well	GRISWOLD 26N-11HZ
Field	WELD COUNTY (KERR MCGEE)	Wellbore	GRISWOLD 26N-11HZ PWB
Facility	SEC.11-T1N-R66W		

WELLPATH COMMENTS					
MD [ft]	Inclination [°]	Azimuth [°]	TVD [ft]	Comment	
890.00	0.000	98.950	890.00	BASE FOX HILLS	
1624.00	0.000	98.950	1624.00	SURFACE CSG SETTING DEPTH	
4641.37	29.000	98.950	4390.00	PARKMAN	
4979.80	29.000	98.950	4686.00	SUSSEX	
7708.95	45.543	0.151	7228.00	SHARON SPRINGS	
7764.62	51.110	0.151	7265.00	NIOBRARA	
8001.71	74.818	0.151	7372.00	NIOBRARA B	

DESIGN COMMENTS					
MD [ft]	Inclination [°]	Azimuth [°]	TVD [ft]	Comment	
17.00	0.000	98.950	17.00	TIE ON	
1674.00	0.000	98.950	1674.00	BEGIN NUDGE	
3124.00	29.000	98.950	3062.88	END NUDGE	
5614.37	29.000	98.950	5241.00	BEGIN DROP	
7064.37	0.000	0.151	6629.88	END DROP	
7253.53	0.000	0.151	6819.04	KOP, BUILD @ 10°/100'	
8153.53	90.000	0.151	7392.00	LANDING POINT	
12545.34	90.000	0.151	7392.00	TOTAL DEPTH	