

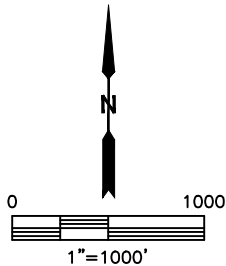
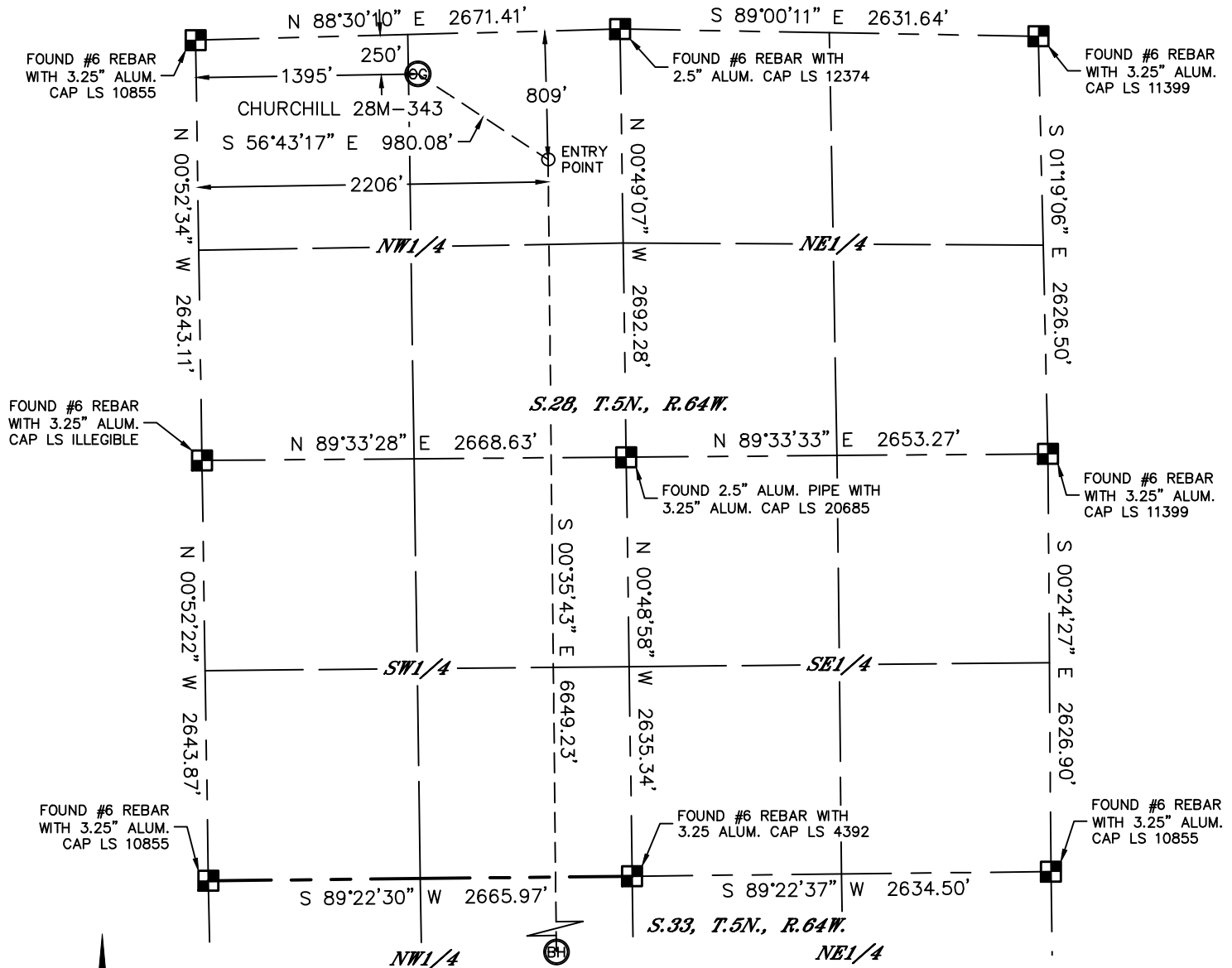


Lat40°, Inc. 1635 Foxtrail Drive, Suite 325 Loveland, CO 970-776-3321

WELL LOCATION CERTIFICATE

THIS MAP DOES NOT REPRESENT A BOUNDARY SURVEY

SECTION: 28
TOWNSHIP: 5N
RANGE: 64W



In accordance with a request from Jake Bragg with PDC ENERGY Lat40°, Inc. has determined the surface location of the CHURCHILL 28M-343 to be 250' from the NORTH line and 1395' from the WEST line as measured at right angles from the section lines of Section 28, Township 5 North, Range 64 West and the bottom hole to be 2138' from the NORTH line and 2163' from the WEST line as measured at right angles from the section lines of Section 33, Township 5 North, Range 64 West of the Sixth Principal Meridian, County of Weld, State of Colorado.

I hereby state that this Well Location Certificate was prepared by me, or under my direct supervision, that the fieldwork was completed on 11/7/2013, for and on behalf of PDC ENERGY. That this is not a Land Survey Plat or an Improvement Survey Plat, and that it is not to be relied upon for establishment of fence, building, or other future improvement lines.

SURFACE LOCATION
LAT: 40.37691°N
LONG: 104.55928°W
PDOP: 2.1
ELEV: 4633'
1/4,1/4: NE1/4NW1/4

BOTTOM HOLE
LAT: 40.35716°N
LONG: 104.55637°W

ENTRY POINT
LAT: 40.37541°N
LONG: 104.55636°W

LEGEND

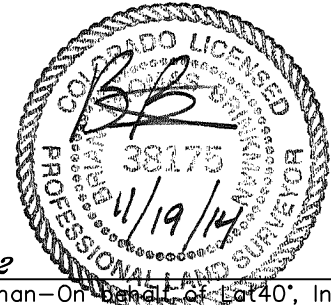
- = ALIQUOT MONUMENT AS DESCRIBED
- = CALCULATED POSITION

SHEET 1 OF 2

Brian T. Brinkman—On behalf of Lat40°, Inc.

Colorado Licensed Professional
Land Surveyor No. 38175

DATE: rev11/19/2014
PROJECT#: 2013151



NOTE:

- 1) Bearings shown are Grid Bearings of the Colorado State Plane Coordinate System, North Zone, North American Datum 1983/2007. The lineal dimensions as contained herein are based upon the "U.S. Survey Foot."
- 2) Ground elevations are based on an observed GPS elevation (NAVD 1988 DATUM).
- 3) IMPROVEMENTS: See LOCATION DRAWING for all visible improvements within 500' of disturbed area.
- 4) SURFACE USE: RANGELAND
- 5) INSTRUMENT OPERATOR: BRIAN ROTTINGHAUS
- 6) NEAREST CULTURAL ITEMS:
BUILDING: ±643' NE
BUILDING UNIT: ±740' N
HIGH OCCUPANCY BUILDING UNIT: ±2180' NE
DESIGNATED OUTSIDE ACTIVITY AREA: 5280'±
PUBLIC ROAD: (RANGEVIEW DRIVE) 862' N
ABOVEGROUND UTILITY: 287' N
RAILROAD: ±2900' N
PROPERTY LINE: 250' N

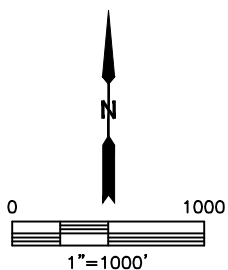
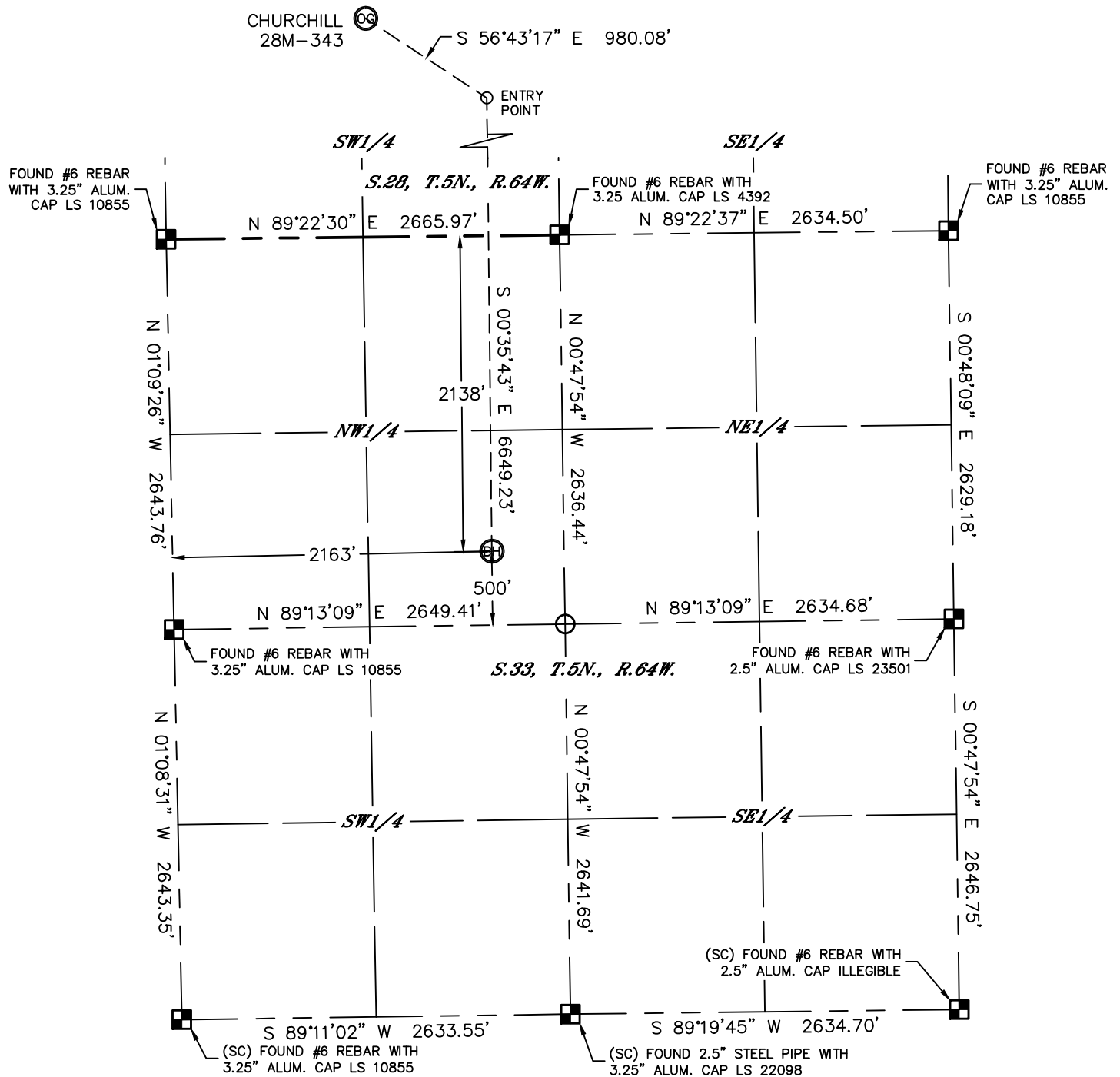


Lat40°, Inc. 1635 Foxtrail Drive, Suite 325 Loveland, CO 970-776-3321

WELL LOCATION CERTIFICATE

THIS MAP DOES NOT REPRESENT A BOUNDARY SURVEY

SECTION: 28
TOWNSHIP: 5N
RANGE: 64W



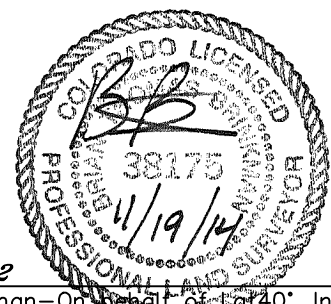
LEGEND

- = ALIQUOT MONUMENT AS DESCRIBED
- = CALCULATED POSITION

SHEET 2 OF 2

Brian T. Brinkman—On Behalf of Lat40°, Inc.
Colorado Licensed Professional
Land Surveyor No. 38175

DATE: rev11/19/2014
PROJECT#: 2013151



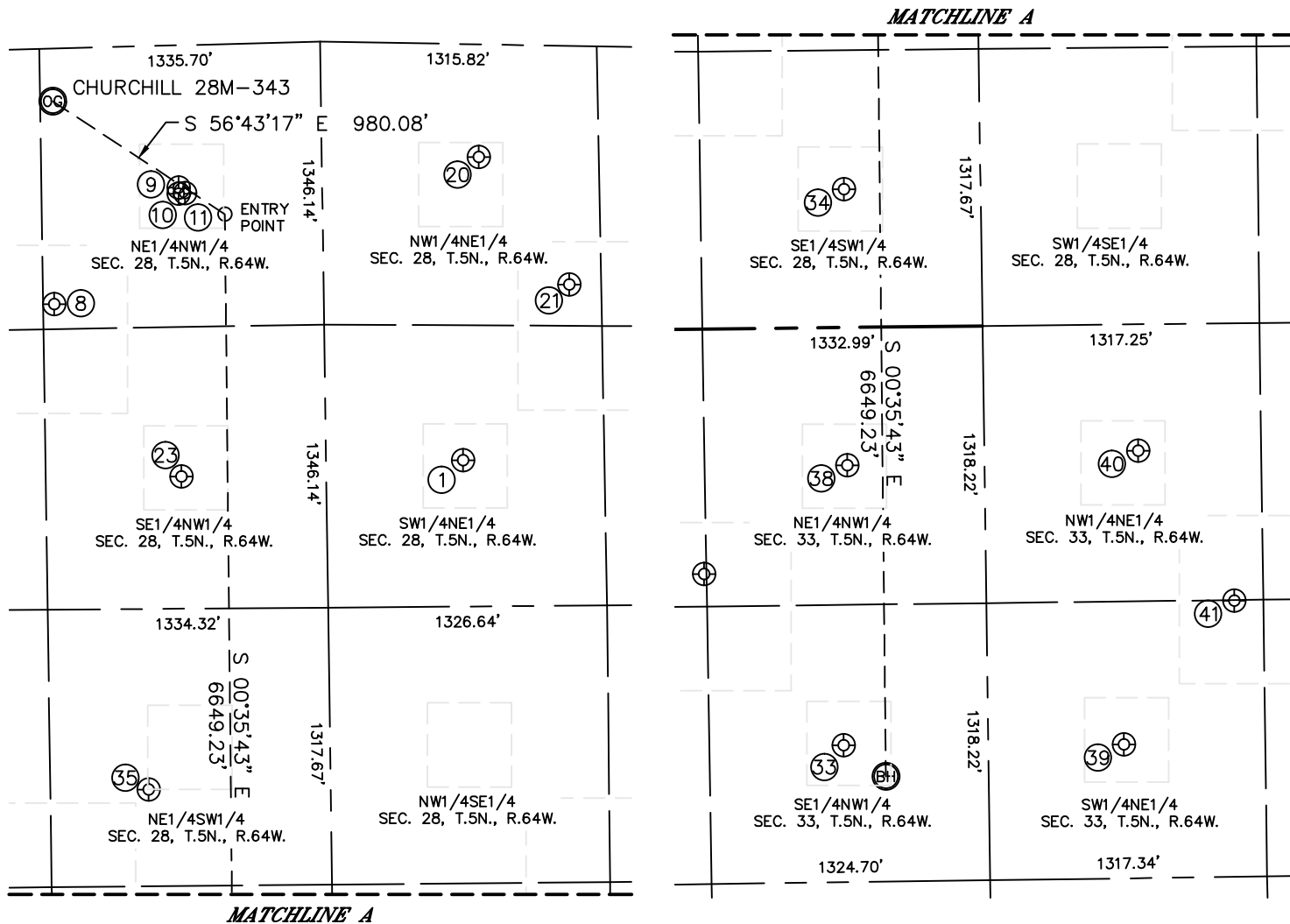


Lat40°, Inc. 1635 Foxtrail Drive, Suite 325 Loveland, CO 970-776-3321

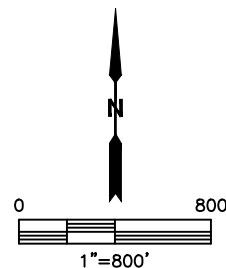
SITE SKETCH

CHURCHILL 28M-343

SECTION: 28
TOWNSHIP: 5N
RANGE: 64W



| WELL NO. | WELL NAME | SHL FOOTAGE | | | | SHL LAT° | SHL LONG° | PDOP | ELEV (FT.) | 1/4/1/4 |
|----------|-----------------|-------------|-----|------|-----|----------|------------|------|------------|---------|
| 1 | HALL 28-3 | 1979 | FNL | 1996 | FEL | 40.37217 | -104.55235 | 2.0 | 4625 | SWNE |
| 8 | CHURCHILL 5 | 1215 | FNL | 1387 | FWL | 40.37426 | -104.55929 | 1.9 | 4639 | NENW |
| 9 | CHURCHILL 2-6B | 676 | FNL | 1988 | FWL | 40.37577 | -104.55715 | 1.9 | 4629 | NENW |
| 10 | CHURCHILL 28-2 | 706 | FNL | 1987 | FWL | 40.37569 | -104.55715 | 2.3 | 4629 | NENW |
| 11 | CHURCHILL 2-7I | 704 | FNL | 2018 | FWL | 40.37569 | -104.55704 | 1.9 | 4629 | NENW |
| 20 | HALL 28-4 | 536 | FNL | 1888 | FEL | 40.37612 | -104.55202 | 1.8 | 4620 | NWNE |
| 21 | HALL 28-5 | 1136 | FNL | 1471 | FEL | 40.37444 | -104.55050 | 1.7 | 4620 | NWNE |
| 23 | CHURCHILL 28-1 | 2051 | FNL | 1979 | FWL | 40.37199 | -104.55715 | 2.8 | 4650 | SENW |
| 33 | BAILEY 33-1 | 650 | FSL | 1965 | FWL | 40.35757 | -104.55708 | 2.1 | 4687 | SENW |
| 34 | WELSH 1 | 657 | FSL | 2017 | FWL | 40.36483 | -104.55698 | 1.9 | 4648 | SESW |
| 35 | WELCH B 28-11 | 1779 | FSL | 1801 | FWL | 40.36791 | -104.55777 | 1.8 | 4641 | NESW |
| 38 | WONENBERG B33-3 | 1982 | FSL | 2010 | FWL | 40.36123 | -104.55697 | 1.5 | 4664 | NENW |
| 39 | HENDRICKS 33-4 | 1998 | FNL | 1990 | FEL | 40.35755 | -104.55230 | 1.5 | 4666 | SWNE |
| 40 | HENDRICKS 33-2 | 601 | FNL | 1903 | FEL | 40.36138 | -104.55201 | 3.4 | 4644 | NWNE |
| 41 | HENDRICKS 5 | 1319 | FNL | 1456 | FEL | 40.35941 | -104.55039 | 1.9 | 4646 | SWNE |



DATE: rev11/19/2014
PROJECT#: 2013151