

T10N, R57W, 6th. P.M.

WHITING OIL & GAS CORP.

Well location, HORSETAIL #08D-1701 (TARGET BOTTOM HOLE), located as shown in the SW 1/4 SW 1/4 of Section 17, T10N, R57W, 6th. P.M., Weld County, Colorado.

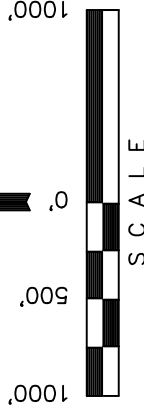
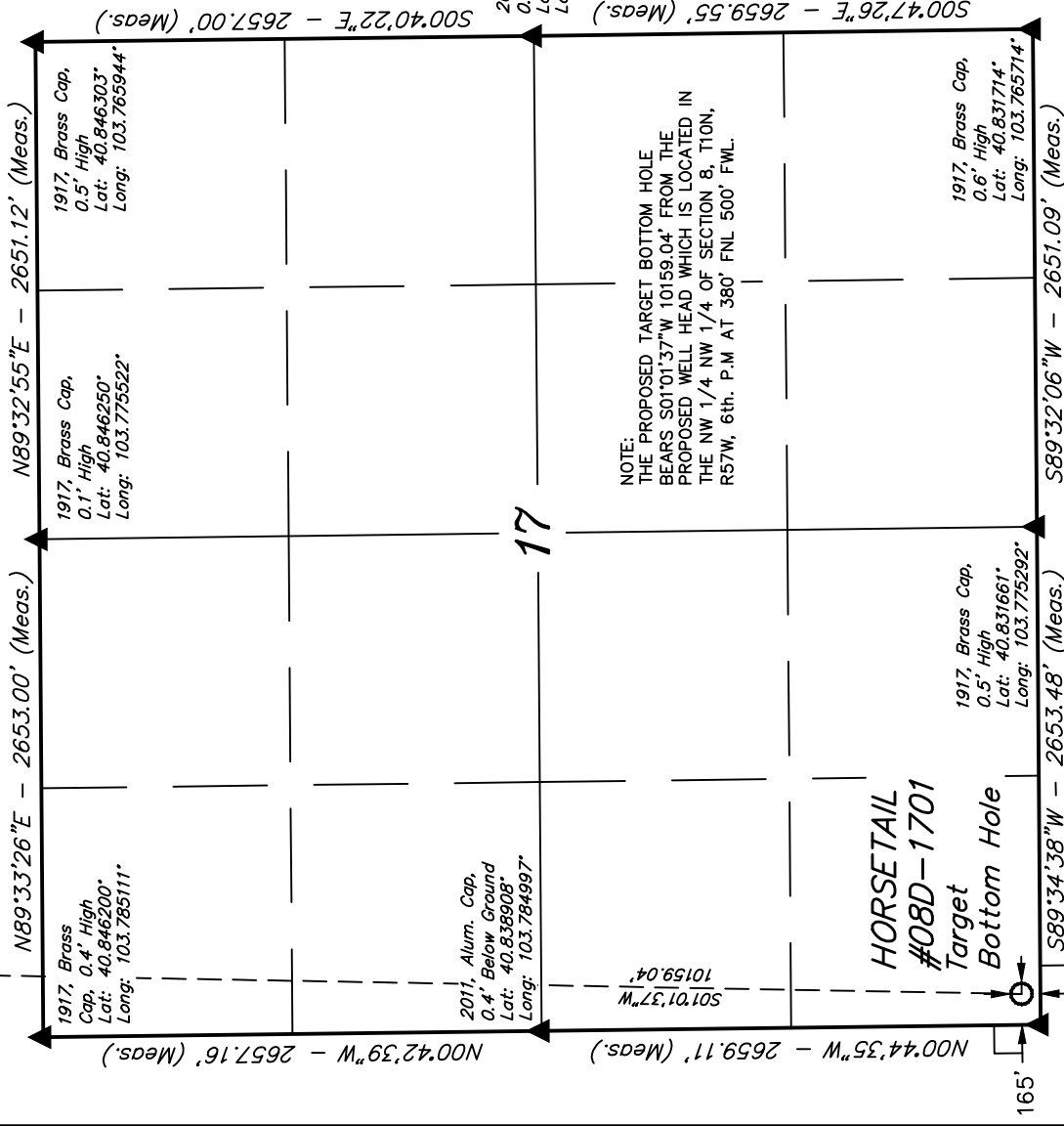
BASIS OF ELEVATION

SPOT ELEVATION LOCATED AT THE NORTHEAST CORNER OF SECTION 15, T9N, R58W, 6th P.M. TAKEN FROM THE GATEHOOK SPRING, QUADRANGLE, COLORADO, WELD COUNTY, 7.5 MINUTE QUAD (TOPOGRAPHIC MAP) PUBLISHED BY THE UNITED STATES DEPARTMENT OF THE INTERIOR, GEOLOGICAL SURVEY. SAID ELEVATION IS MARKED AS BEING 4679 FEET.

BASIS OF BEARINGS

BASIS OF BEARINGS IS A G.P.S. OBSERVATION.

Surface Location



CERTIFICATE OF REGISTRATION

THIS IS TO CERTIFY THAT THE ABOVE DATA WAS PREPARED FROM FIELD NOTES OF ACTUAL SURVEYS MADE BY ME OR UNDER MY SUPERVISION AND THAT THE SAME ARE TRUE AND CORRECT TO THE BEST OF MY KNOWLEDGE AND BELIEF.

REGISTERED LAND SURVEYOR  
REGISTRATION NO. 28285  
STATE OF COLORADO  
EXPIRATION DATE 12-31-13

UNTAH ENGINEERING & LAND SURVEYING	
85 SOUTH 200 EAST - VERNAL, UTAH 84078	
(435) 789-1017	
SCALE 1" = 1000'	DATE SURVEYED: 11-26-13
PARTY DALLAS NIELSEN G.W. H.K.W.	DATE DRAWN: 12-20-13
WEATHER COLD	REFERENCES G.L.O. PLAT
FILE WHITING OIL & GAS CORP.	

LEGEND:

- = 90° SYMBOL
- = PROPOSED WELL HEAD.
- ▲ = SECTION CORNERS LOCATED.

NAD 83 (TARGET BOTTOM HOLE)
LATITUDE = 40°49'54.80" (40.831889)
LONGITUDE = 103°47'03.43" (103.784286)
NAD 27 (TARGET BOTTOM HOLE)
LATITUDE = 40°49'54.85" (40.831903)
LONGITUDE = 103°47'01.63" (103.783786)

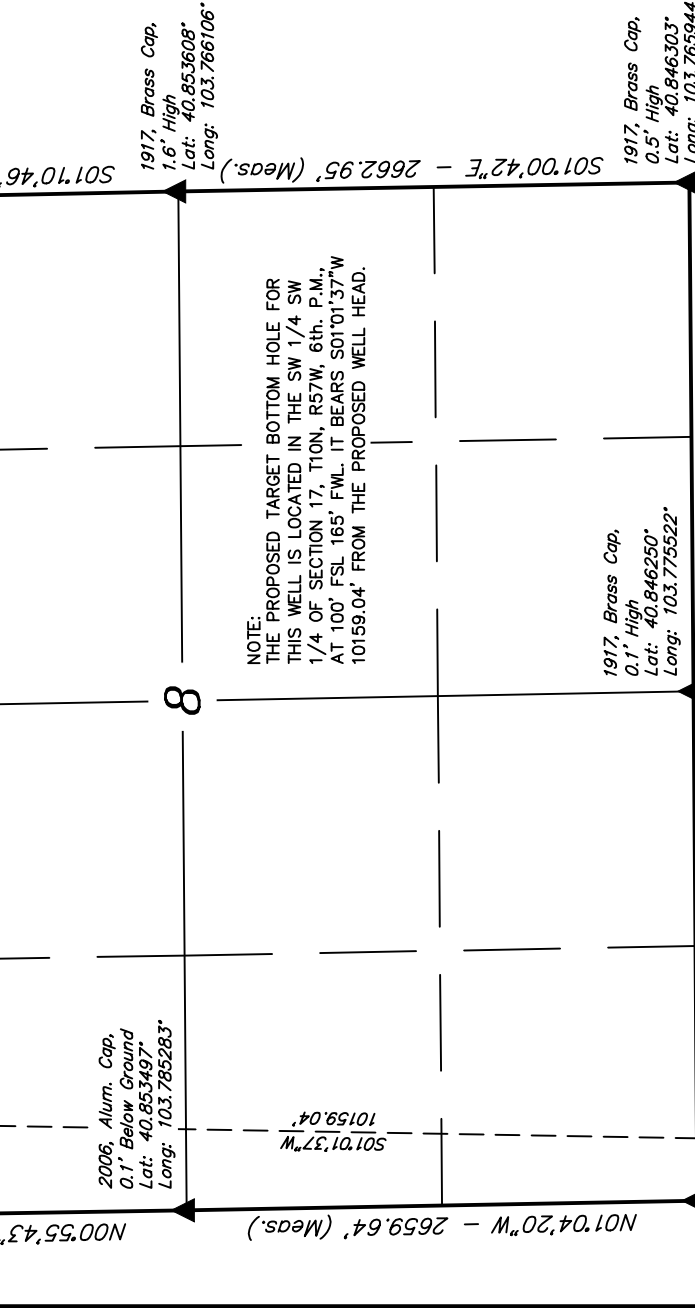
WHITING OIL & GAS CORP.

Well location, HORSETAIL #08D-1701, (SURFACE LOCATION), located as shown in the NW 1/4 NW 1/4 of Section 8, T10N, R57W, 6th. P.M., Weld County, Colorado.

1/4 of Section 8, T10N, R57W, 6th  
County, Colorado.

SPOT ELEVATION LOCATED AT THE NORTHEAST CORNER OF SECTION 15, T9N, R58W, 6th P.M. TAKEN FROM THE GATEHOOK SPRING, QUADRANGLE, COLORADO, WELD COUNTY, 7.5 MINUTE QUAD (TOPOGRAPHIC MAP) PUBLISHED BY THE UNITED STATES DEPARTMENT OF THE INTERIOR, GEOLOGICAL SURVEY. SAID ELEVATION IS MARKED AS BEING 4679 FEET.

BASIS OF BEARINGS IS A G.P.S. OBSERVATION.






1917, Brass Cap,  
0.5' High  
Lat: 40.846303°  
Long: 103.765944°

85 SOUTH 200 EAST - VERNAL, UTAH 84078  
(435) 789-1017

SCALE	1" = 1000'	DATE SURVEYED:	DATE DRAWN:
PARTY		11-26-13	12-20-13
DALLAS NIELSEN	G.W. H.K.W.	REFERENCES	
WEATHER		G.L.O. PLAT	
COLD		FILE	
		WHITING OIL & GAS CORP.	

PDOP = 1.5	NAD 83 (SURFACE LOCATION)
	LATITUDE = 40°51'35.14" (40.859761)
	LONGITUDE = 103°47'00.98" (103.783606)
	NAD 27 (SURFACE LOCATION)
	LATITUDE = 40°51'35.20" (40.859778)
	LONGITUDE = 103°46'59.17" (103.783103)

**Legend:**

-  = 90° SYMBOL
-  = PROPOSED WELL HEAD.
-  = SECTION CORNERS LOCATED.