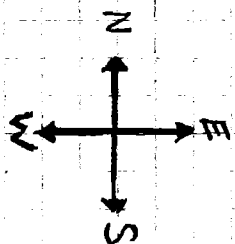


Gebauer 7-23 Skim Pit

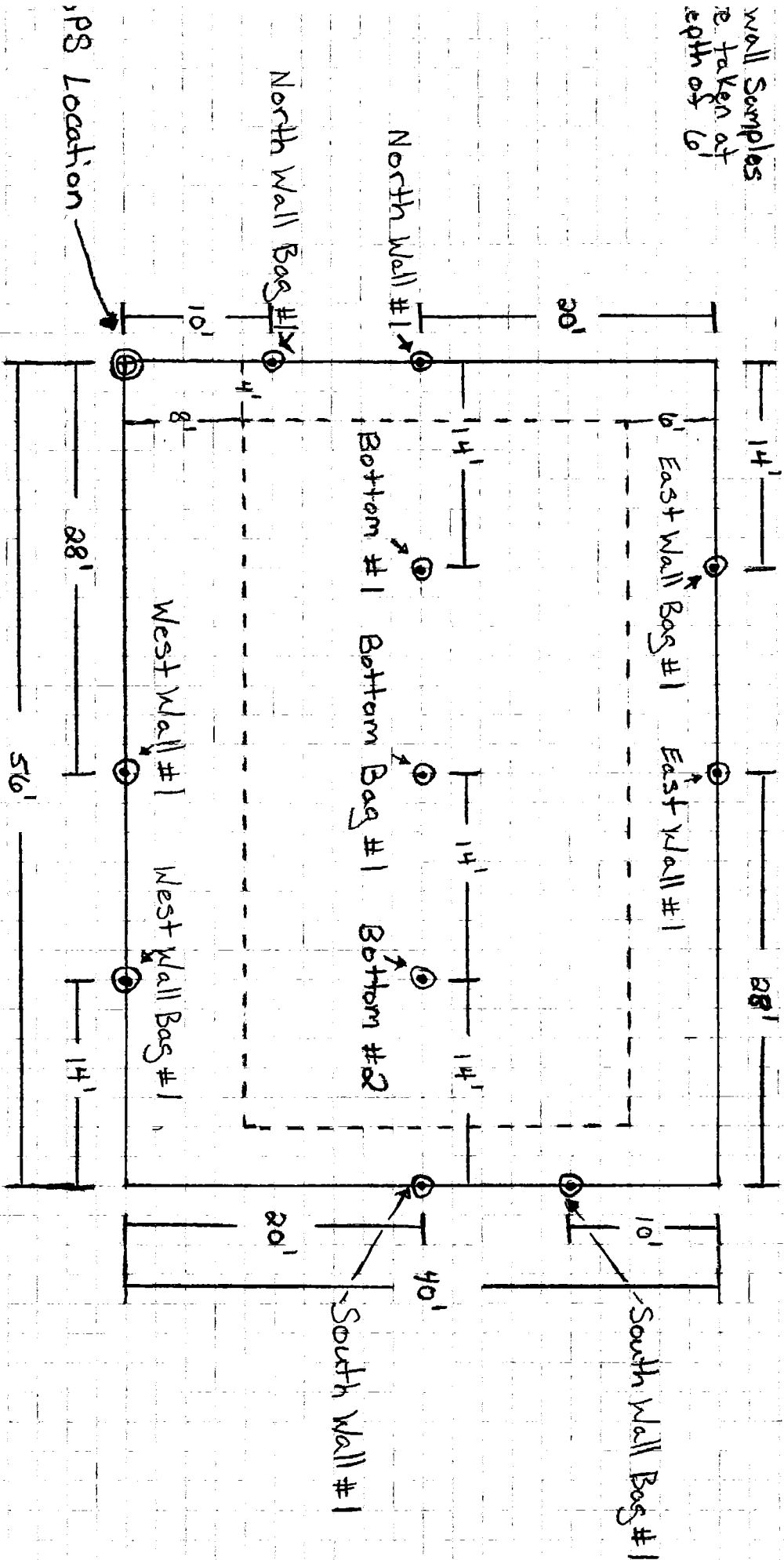
Pit Dimension: 56' x 40' x 12' depth

GPS Location: N 46° 15' 3.8768" W 103° 16' 12.4248"



yes

wall samples
re. taken at
depth of 6'

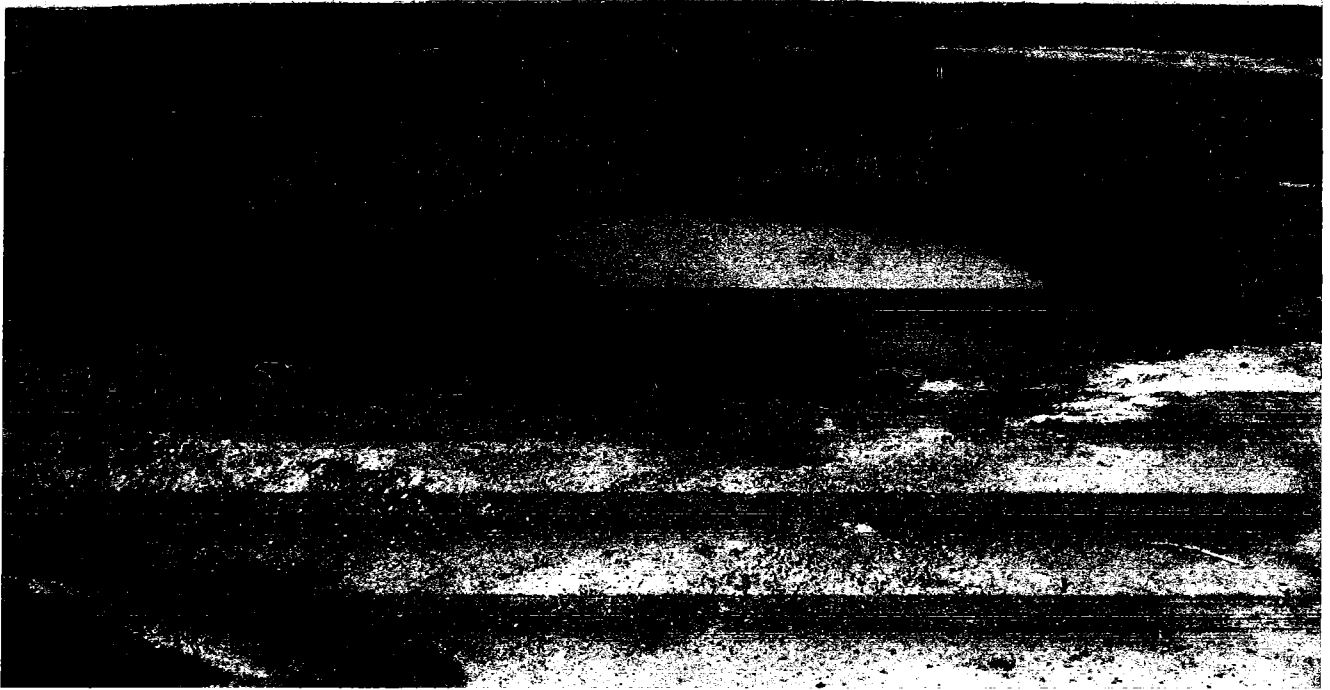


Distance: 10'

Legend: Pit Border (Before Excavation)
Pit Border (After Excavation)
Sample point
GPS Location

GEBAUER 7 – 23 SKIM PIT

Before Excavation



After Excavation



Louis Gebauer 7 – 23 Skim Pit
Sample Comparison Table

Sample Name	Tested For	Test Result	Cogcc Max Concentration Level
Bottom #1	TPH – DRO	ND	<500 mg/kg - TPH
Bottom #2	TPH – GRO BTEX	GRO – ND Benzene – ND Toluene – ND Ethylbenzene – ND Xylene – ND	<500 mg/kg – TPH 0.17 mg/kg – Benzene 85 mg/kg – Toluene 100 mg/kg – Ethylbenzene 175 mg/kg – Xylene
West Wall #1	TPH – DRO/GRO BTEX	DRO – 8.06 mg/kg GRO – ND Benzene – ND Toluene – ND Ethylbenzene – ND Xylene – ND	<500 mg/kg – TPH 0.17 mg/kg – Benzene 85 mg/kg – Toluene 100 mg/kg – Ethylbenzene 175 mg/kg – Xylene
East Wall #1	TPH – DRO/GRO BTEX	DRO – 15.0 mg/kg GRO – ND Benzene – ND Toluene – ND Ethylbenzene – ND Xylene – ND	<500 mg/kg – TPH 0.17 mg/kg – Benzene 85 mg/kg – Toluene 100 mg/kg – Ethylbenzene 175 mg/kg – Xylene
North Wall #1	TPH – DRO/GRO BTEX	DRO – ND GRO – ND Benzene – ND Toluene – ND Ethylbenzene – ND Xylene – ND	<500 mg/kg – TPH 0.17 mg/kg – Benzene 85 mg/kg – Toluene 100 mg/kg – Ethylbenzene 175 mg/kg – Xylene
South Wall #1	TPH – DRO/GRO BTEX	DRO – ND GRO – ND Benzene – ND Toluene – ND Ethylbenzene – ND Xylene – ND	<500 mg/kg – TPH 0.17 mg/kg – Benzene 85 mg/kg – Toluene 100 mg/kg – Ethylbenzene 175 mg/kg – Xylene
Bottom Bag #1	Electrical Conductivity SAR pH	EC – 0.448 mmhos/cm SAR – 2.72 pH – 9.67	EC - <4mmhos/cm SAR - <12 pH – 6 - 9
West Wall Bag #1	Electrical Conductivity SAR pH	EC – 0.424 mmhos/cm SAR – 3.26 pH – 9.81	EC - <4mmhos/cm SAR - <12 pH – 6 - 9
East Wall Bag #1	Electrical Conductivity SAR pH	EC – 0.607 mmhos/cm SAR – 5.28 pH – 9.81	EC - <4mmhos/cm SAR - <12 pH – 6 - 9

North Wall Bag #1	Electrical Conductivity SAR pH	EC – 0.567 mmhos/cm SAR – 1.38 pH - 9.77	EC - <4mmhos/cm SAR - <12 pH – 6 - 9
South Wall Bag #1	Electrical Conductivity SAR pH	EC – 0.520 mmhos/cm SAR – 1.59 pH – 9.79	EC - <4mmhos/cm SAR - <12 pH – 6 - 9