

Noble Energy Inc.- Weld County, CO (Grid North)

Well Name: **Steadfast E27-63-1HN**

Surface Location: Resolute E25-63-1HN Pad Sec.26-T6N-R65W
 North American Datum 1983 , US State Plane 1983 , Colorado Northern Zone

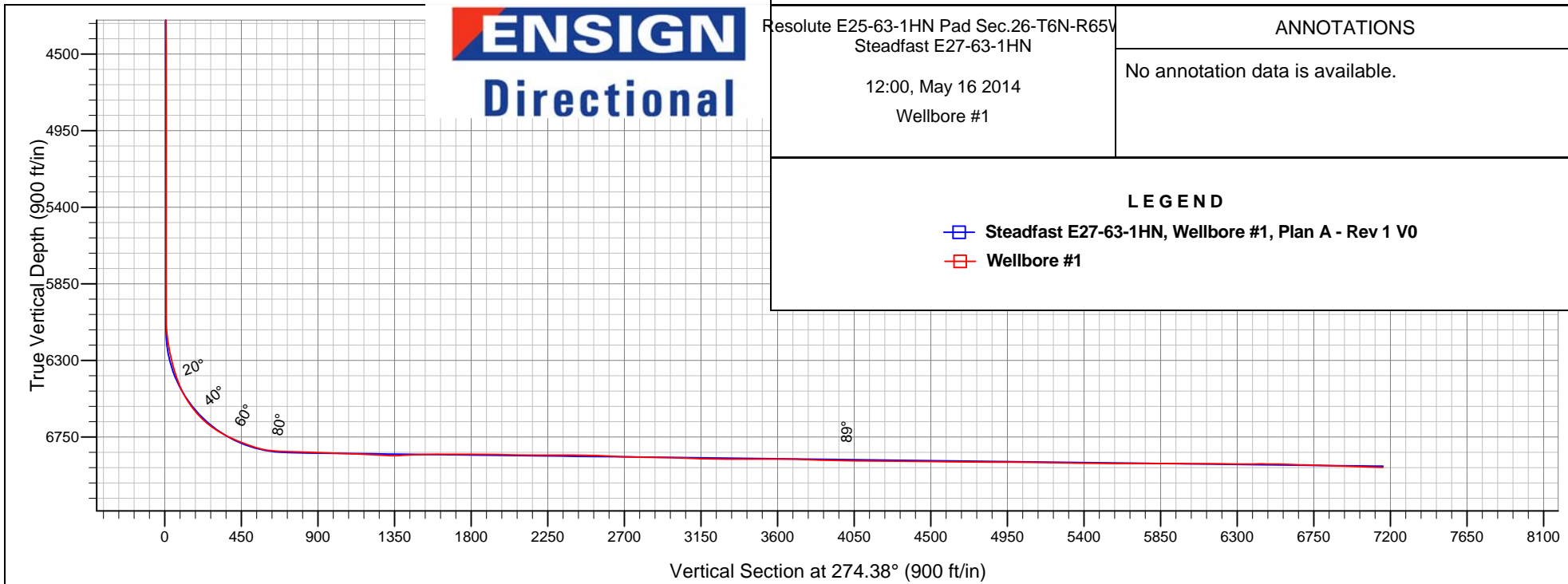
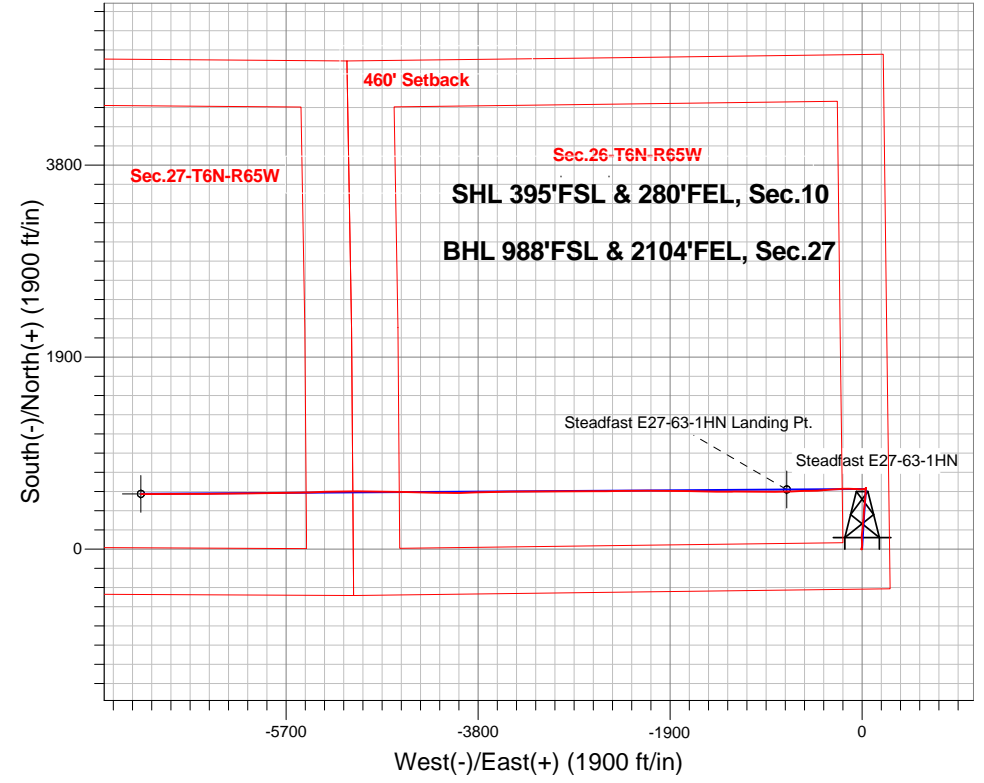
Ground Elevation: 4676.0

+N/-S	+E/-W	Northing	Easting	Latitude	Longitude	Slot
0.0	0.0	1408266.21	3244414.54	40.450770	-104.621750	

Precision 828 RKB - 16' WELL @ 4692.0ft (Precision 828 RKB - 16')

FINAL SURVEY

Projected Bottom Hole Location
 13751'MD 6928'TVD 544'N & 7135'W of SHL
 88.2 degree Incl @ 269.9 degree AZM



Resolute E25-63-1HN Pad Sec.26-T6N-R65W
 Steadfast E27-63-1HN
 12:00, May 16 2014
 Wellbore #1

ANNOTATIONS

No annotation data is available.

LEGEND

- ▣ Steadfast E27-63-1HN, Wellbore #1, Plan A - Rev 1 V0
- ▣ Wellbore #1



Noble Energy Inc.- Weld County, CO (Grid North)

Sec.26-T6N-R65W

Resolute E25-63-1HN Pad Sec.26-T6N-R65W

Steadfast E27-63-1HN

Wellbore #1

Design: Wellbore #1

Standard Survey Report

16 May, 2014

Company:	Noble Energy Inc.- Weld County, CO (Grid North)	Local Co-ordinate Reference:	Well Steadfast E27-63-1HN
Project:	Sec.26-T6N-R65W	TVD Reference:	WELL @ 4692.0ft (Precision 828 RKB - 16')
Site:	Resolute E25-63-1HN Pad Sec.26-T6N-R65W	MD Reference:	WELL @ 4692.0ft (Precision 828 RKB - 16')
Well:	Steadfast E27-63-1HN	North Reference:	Grid
Wellbore:	Wellbore #1	Survey Calculation Method:	Minimum Curvature
Design:	Wellbore #1	Database:	Landmark

Project	Sec.26-T6N-R65W, Weld County, CO		
Map System:	US State Plane 1983	System Datum:	Mean Sea Level
Geo Datum:	North American Datum 1983		Using Well Reference Point
Map Zone:	Colorado Northern Zone		Using geodetic scale factor

Site	Resolute E25-63-1HN Pad Sec.26-T6N-R65W				
Site Position:		Northing:	1,408,200.65 ft	Latitude:	40.450590
From:	Lat/Long	Easting:	3,244,415.19 ft	Longitude:	-104.621750
Position Uncertainty:	0.0 ft	Slot Radius:	"	Grid Convergence:	0.57 °

Well	Steadfast E27-63-1HN					
Well Position	+N/-S	0.0 ft	Northing:	1,408,266.21 ft	Latitude:	40.450770
	+E/-W	0.0 ft	Easting:	3,244,414.54 ft	Longitude:	-104.621750
Position Uncertainty		0.0 ft	Wellhead Elevation:	ft	Ground Level:	4,676.0 ft

Wellbore	Wellbore #1				
Magnetics	Model Name	Sample Date	Declination (°)	Dip Angle (°)	Field Strength (nT)
	IGRF2010	4/22/2014	8.41	67.02	52,873

Design	Wellbore #1				
Audit Notes:					
Version:	1.0	Phase:	ACTUAL	Tie On Depth:	0.0
Vertical Section:		Depth From (TVD) (ft)	+N/-S (ft)	+E/-W (ft)	Direction (°)
		0.0	0.0	0.0	274.38

Survey Program	Date 5/16/2014				
From (ft)	To (ft)	Survey (Wellbore)	Tool Name	Description	
339.0	561.0	Surface (Wellbore #1)	Flexi-Shot	VES Flexi-Shot Tool	
659.0	7,226.0	Intermediate- Curve (Wellbore #1)	MWD	MWD - Standard	
7,300.0	13,751.0	Lateral (Wellbore #1)	MWD+IFR1+MS_WY	Fixed:v2:Rockies, crustal dec + 3-axis correction	

Survey										
Measured Depth (ft)	Inclination (°)	Azimuth (°)	Vertical Depth (ft)	+N/-S (ft)	+E/-W (ft)	Vertical Section (ft)	Dogleg Rate (°/100ft)	Build Rate (°/100ft)	Turn Rate (°/100ft)	
0.0	0.00	0.00	0.0	0.0	0.0	0.0	0.00	0.00	0.00	
339.0	0.00	243.45	339.0	0.0	0.0	0.0	0.00	0.00	0.00	
561.0	0.80	261.08	561.0	-0.2	-1.5	1.5	0.36	0.36	0.00	
659.0	1.40	280.80	659.0	-0.1	-3.4	3.4	0.72	0.61	20.12	
749.0	0.70	204.50	749.0	-0.4	-4.7	4.6	1.57	-0.78	-84.78	
839.0	0.80	215.00	839.0	-1.4	-5.3	5.2	0.19	0.11	11.67	
929.0	1.10	7.10	928.9	-1.1	-5.5	5.4	2.05	0.33	169.00	
1,018.0	3.00	21.30	1,017.9	1.9	-4.6	4.7	2.19	2.13	15.96	
1,095.0	4.10	9.70	1,094.7	6.5	-3.4	3.9	1.70	1.43	-15.06	
1,190.0	5.10	7.30	1,189.4	14.1	-2.3	3.3	1.07	1.05	-2.53	

Company:	Noble Energy Inc.- Weld County, CO (Grid North)	Local Co-ordinate Reference:	Well Steadfast E27-63-1HN
Project:	Sec.26-T6N-R65W	TVD Reference:	WELL @ 4692.0ft (Precision 828 RKB - 16')
Site:	Resolute E25-63-1HN Pad Sec.26-T6N-R65W	MD Reference:	WELL @ 4692.0ft (Precision 828 RKB - 16')
Well:	Steadfast E27-63-1HN	North Reference:	Grid
Wellbore:	Wellbore #1	Survey Calculation Method:	Minimum Curvature
Design:	Wellbore #1	Database:	Landmark

Survey									
Measured Depth (ft)	Inclination (°)	Azimuth (°)	Vertical Depth (ft)	+N/-S (ft)	+E/-W (ft)	Vertical Section (ft)	Dogleg Rate (°/100ft)	Build Rate (°/100ft)	Turn Rate (°/100ft)
1,285.0	6.70	9.50	1,283.9	23.7	-0.8	2.6	1.70	1.68	2.32
1,380.0	8.30	3.20	1,378.1	36.0	0.5	2.3	1.89	1.68	-6.63
1,475.0	7.50	359.10	1,472.2	49.1	0.8	3.0	1.03	-0.84	-4.32
1,570.0	7.30	357.60	1,566.4	61.3	0.4	4.3	0.29	-0.21	-1.58
1,665.0	8.00	353.70	1,660.6	73.9	-0.6	6.2	0.92	0.74	-4.11
1,760.0	9.10	355.60	1,754.5	88.0	-1.9	8.6	1.20	1.16	2.00
1,855.0	9.20	359.50	1,848.3	103.0	-2.5	10.4	0.66	0.11	4.11
1,950.0	8.90	1.30	1,942.1	118.0	-2.4	11.4	0.43	-0.32	1.89
2,059.0	9.40	1.60	2,049.7	135.3	-2.0	12.3	0.46	0.46	0.28
2,149.0	8.80	10.20	2,138.6	149.4	-0.6	12.0	1.65	-0.67	9.56
2,239.0	9.40	7.10	2,227.5	163.5	1.6	10.9	0.86	0.67	-3.44
2,329.0	8.00	2.70	2,316.4	177.1	2.8	10.7	1.72	-1.56	-4.89
2,418.0	8.40	2.90	2,404.5	189.7	3.4	11.1	0.45	0.45	0.22
2,508.0	8.60	8.10	2,493.5	203.0	4.7	10.8	0.88	0.22	5.78
2,598.0	7.50	7.50	2,582.7	215.4	6.4	10.1	1.23	-1.22	-0.67
2,688.0	8.40	8.60	2,671.8	227.8	8.1	9.3	1.01	1.00	1.22
2,778.0	9.80	6.50	2,760.7	241.9	10.0	8.5	1.60	1.56	-2.33
2,868.0	9.80	2.80	2,849.3	257.1	11.2	8.4	0.70	0.00	-4.11
2,958.0	10.40	2.80	2,937.9	272.9	12.0	8.8	0.67	0.67	0.00
3,048.0	9.60	8.60	3,026.6	288.4	13.5	8.5	1.43	-0.89	6.44
3,137.0	7.60	4.90	3,114.6	301.6	15.1	7.9	2.33	-2.25	-4.16
3,227.0	7.80	2.50	3,203.8	313.7	15.9	8.1	0.42	0.22	-2.67
3,317.0	7.10	1.50	3,293.0	325.3	16.3	8.5	0.79	-0.78	-1.11
3,407.0	7.30	357.90	3,382.3	336.6	16.3	9.5	0.55	0.22	-4.00
3,497.0	7.00	4.20	3,471.6	347.8	16.5	10.1	0.93	-0.33	7.00
3,587.0	7.70	1.60	3,560.9	359.3	17.0	10.4	0.86	0.78	-2.89
3,677.0	8.80	8.60	3,649.9	372.1	18.2	10.2	1.65	1.22	7.78
3,767.0	9.50	8.10	3,738.8	386.3	20.3	9.2	0.78	0.78	-0.56
3,856.0	9.70	8.00	3,826.5	401.0	22.4	8.3	0.23	0.22	-0.11
3,946.0	9.50	6.40	3,915.3	415.9	24.3	7.5	0.37	-0.22	-1.78
4,036.0	8.60	7.10	4,004.2	429.9	25.9	7.0	1.01	-1.00	0.78
4,126.0	8.30	2.10	4,093.2	443.1	27.0	6.9	0.88	-0.33	-5.56
4,216.0	8.70	8.70	4,182.2	456.3	28.3	6.6	1.17	0.44	7.33
4,306.0	9.00	3.80	4,271.1	470.1	29.8	6.2	0.90	0.33	-5.44
4,395.0	9.30	358.80	4,359.0	484.2	30.1	7.0	0.95	0.34	-5.62
4,485.0	10.10	3.10	4,447.7	499.4	30.3	7.9	1.20	0.89	4.78
4,575.0	8.20	0.20	4,536.6	513.7	30.8	8.5	2.17	-2.11	-3.22
4,665.0	8.00	2.70	4,625.7	526.3	31.1	9.1	0.45	-0.22	2.78
4,754.0	8.80	4.20	4,713.7	539.3	31.9	9.3	0.93	0.90	1.69
4,844.0	8.80	7.90	4,802.6	553.0	33.3	8.9	0.63	0.00	4.11
4,934.0	7.30	5.50	4,891.8	565.5	34.8	8.4	1.71	-1.67	-2.67
5,024.0	6.50	5.00	4,981.1	576.3	35.8	8.2	0.89	-0.89	-0.56
5,114.0	5.10	3.40	5,070.6	585.3	36.5	8.3	1.57	-1.56	-1.78
5,204.0	4.00	357.40	5,160.4	592.5	36.6	8.7	1.33	-1.22	-6.67
5,294.0	3.20	359.60	5,250.2	598.1	36.4	9.3	0.90	-0.89	2.44
5,383.0	1.80	28.00	5,339.1	601.8	37.1	8.9	2.06	-1.57	31.91
5,473.0	0.50	41.90	5,429.1	603.4	38.0	8.1	1.47	-1.44	15.44
5,563.0	0.60	358.30	5,519.1	604.1	38.3	7.9	0.47	0.11	-48.44
5,653.0	0.60	207.70	5,609.1	604.2	38.0	8.2	1.29	0.00	-167.33
5,743.0	0.90	202.10	5,699.1	603.1	37.5	8.6	0.34	0.33	-6.22
5,832.0	1.50	162.90	5,788.0	601.4	37.6	8.4	1.11	0.67	-44.05
5,922.0	1.10	180.30	5,878.0	599.4	38.0	7.9	0.62	-0.44	19.33
6,012.0	0.80	192.20	5,968.0	597.9	37.8	7.9	0.40	-0.33	13.22
6,102.0	1.00	222.20	6,058.0	596.7	37.2	8.5	0.56	0.22	33.33

Company:	Noble Energy Inc.- Weld County, CO (Grid North)	Local Co-ordinate Reference:	Well Steadfast E27-63-1HN
Project:	Sec.26-T6N-R65W	TVD Reference:	WELL @ 4692.0ft (Precision 828 RKB - 16')
Site:	Resolute E25-63-1HN Pad Sec.26-T6N-R65W	MD Reference:	WELL @ 4692.0ft (Precision 828 RKB - 16')
Well:	Steadfast E27-63-1HN	North Reference:	Grid
Wellbore:	Wellbore #1	Survey Calculation Method:	Minimum Curvature
Design:	Wellbore #1	Database:	Landmark

Survey									
Measured Depth (ft)	Inclination (°)	Azimuth (°)	Vertical Depth (ft)	+N/-S (ft)	+E/-W (ft)	Vertical Section (ft)	Dogleg Rate (°/100ft)	Build Rate (°/100ft)	Turn Rate (°/100ft)
6,147.0	3.40	254.80	6,103.0	596.1	35.6	10.0	5.81	5.33	72.44
6,192.0	5.90	260.70	6,147.8	595.3	32.0	13.5	5.65	5.56	13.11
6,237.0	8.60	261.40	6,192.4	594.5	26.4	19.0	6.00	6.00	1.56
6,282.0	11.20	262.30	6,236.8	593.4	18.8	26.6	5.79	5.78	2.00
6,326.0	13.60	265.20	6,279.7	592.4	9.4	35.8	5.63	5.45	6.59
6,371.0	15.20	266.50	6,323.3	591.6	-1.8	46.9	3.63	3.56	2.89
6,416.0	16.50	269.50	6,366.6	591.1	-14.1	59.1	3.41	2.89	6.67
6,461.0	18.80	273.80	6,409.5	591.6	-27.7	72.7	5.87	5.11	9.56
6,506.0	22.80	275.50	6,451.6	592.9	-43.6	88.7	8.99	8.89	3.78
6,551.0	27.60	274.00	6,492.3	594.4	-62.7	107.9	10.76	10.67	-3.33
6,596.0	32.60	272.00	6,531.2	595.6	-85.2	130.4	11.33	11.11	-4.44
6,640.0	36.30	272.00	6,567.5	596.5	-110.1	155.3	8.41	8.41	0.00
6,685.0	39.80	270.40	6,602.9	597.0	-137.8	183.0	8.08	7.78	-3.56
6,730.0	45.00	269.50	6,636.1	597.0	-168.1	213.2	11.63	11.56	-2.00
6,775.0	49.50	267.00	6,666.7	596.0	-201.2	246.0	10.80	10.00	-5.56
6,820.0	54.70	265.50	6,694.3	593.6	-236.6	281.2	11.85	11.56	-3.33
6,865.0	59.70	264.50	6,718.7	590.3	-274.2	318.5	11.27	11.11	-2.22
6,910.0	63.40	264.80	6,740.1	586.6	-313.6	357.5	8.24	8.22	0.67
6,955.0	65.80	265.70	6,759.4	583.3	-354.1	397.6	5.63	5.33	2.00
7,000.0	68.00	266.70	6,777.0	580.5	-395.4	438.6	5.30	4.89	2.22
7,045.0	69.70	268.10	6,793.3	578.6	-437.4	480.2	4.76	3.78	3.11
7,090.0	72.00	268.90	6,808.0	577.5	-479.9	522.5	5.38	5.11	1.78
7,135.0	76.50	268.70	6,820.3	576.6	-523.1	565.6	10.01	10.00	-0.44
7,179.0	82.20	268.40	6,828.4	575.5	-566.4	608.6	12.97	12.95	-0.68
7,226.0	86.20	268.90	6,833.1	574.4	-613.1	655.1	8.58	8.51	1.06
7,300.0	88.60	266.10	6,836.5	571.2	-686.9	728.5	4.98	3.24	-3.78
7,356.9	88.28	268.31	6,838.0	568.4	-743.8	785.0	3.93	-0.56	3.89
Steadfast E27-63-1HN Landing Pt.									
7,390.0	88.10	269.60	6,839.1	567.8	-776.8	817.9	3.93	-0.55	3.89
7,480.0	88.70	269.30	6,841.6	567.0	-866.8	907.5	0.75	0.67	-0.33
7,588.0	87.50	270.60	6,845.2	566.9	-974.7	1,015.1	1.64	-1.11	1.20
7,681.0	87.40	271.10	6,849.3	568.2	-1,067.6	1,107.9	0.55	-0.11	0.54
7,774.0	87.20	271.10	6,853.7	570.0	-1,160.5	1,200.6	0.22	-0.22	0.00
7,868.0	87.30	268.50	6,858.2	569.7	-1,254.4	1,294.2	2.76	0.11	-2.77
7,962.0	92.20	270.00	6,858.6	568.5	-1,348.3	1,387.8	5.45	5.21	1.60
8,055.0	92.60	270.20	6,854.7	568.6	-1,441.3	1,480.4	0.48	0.43	0.22
8,149.0	91.50	271.10	6,851.4	569.7	-1,535.2	1,574.2	1.51	-1.17	0.96
8,243.0	89.00	271.40	6,850.9	571.7	-1,629.2	1,668.0	2.68	-2.66	0.32
8,337.0	89.80	271.10	6,851.9	573.8	-1,723.1	1,761.9	0.91	0.85	-0.32
8,431.0	90.20	270.90	6,851.9	575.4	-1,817.1	1,855.7	0.48	0.43	-0.21
8,523.0	88.90	270.30	6,852.7	576.4	-1,909.1	1,947.5	1.56	-1.41	-0.65
8,617.0	88.20	269.50	6,855.0	576.2	-2,003.1	2,041.2	1.13	-0.74	-0.85
8,712.0	90.60	271.10	6,856.0	576.7	-2,098.1	2,135.9	3.04	2.53	1.68
8,805.0	89.20	270.00	6,856.2	577.6	-2,191.0	2,228.7	1.91	-1.51	-1.18
8,898.0	90.50	269.50	6,856.4	577.2	-2,284.0	2,321.4	1.50	1.40	-0.54
8,992.0	89.30	268.70	6,856.6	575.7	-2,378.0	2,415.0	1.53	-1.28	-0.85
9,086.0	88.20	268.00	6,858.6	573.0	-2,472.0	2,508.5	1.39	-1.17	-0.74
9,180.0	87.40	270.10	6,862.3	571.5	-2,565.9	2,602.0	2.39	-0.85	2.23
9,273.0	88.10	269.60	6,865.9	571.2	-2,658.8	2,694.6	0.92	0.75	-0.54
9,367.0	89.20	270.30	6,868.1	571.1	-2,752.8	2,788.3	1.39	1.17	0.74
9,461.0	88.90	270.10	6,869.7	571.5	-2,846.8	2,882.1	0.38	-0.32	-0.21
9,555.0	88.20	269.70	6,872.1	571.3	-2,940.7	2,975.7	0.86	-0.74	-0.43
9,648.0	89.00	269.90	6,874.3	571.0	-3,033.7	3,068.4	0.89	0.86	0.22

Company:	Noble Energy Inc.- Weld County, CO (Grid North)	Local Co-ordinate Reference:	Well Steadfast E27-63-1HN
Project:	Sec.26-T6N-R65W	TVD Reference:	WELL @ 4692.0ft (Precision 828 RKB - 16')
Site:	Resolute E25-63-1HN Pad Sec.26-T6N-R65W	MD Reference:	WELL @ 4692.0ft (Precision 828 RKB - 16')
Well:	Steadfast E27-63-1HN	North Reference:	Grid
Wellbore:	Wellbore #1	Survey Calculation Method:	Minimum Curvature
Design:	Wellbore #1	Database:	Landmark

Survey									
Measured Depth (ft)	Inclination (°)	Azimuth (°)	Vertical Depth (ft)	+N/-S (ft)	+E/-W (ft)	Vertical Section (ft)	Dogleg Rate (°/100ft)	Build Rate (°/100ft)	Turn Rate (°/100ft)
9,741.0	87.70	269.70	6,877.0	570.7	-3,126.7	3,161.1	1.41	-1.40	-0.22
9,835.0	88.90	269.70	6,879.8	570.2	-3,220.6	3,254.7	1.28	1.28	0.00
9,929.0	90.40	269.70	6,880.4	569.7	-3,314.6	3,348.4	1.60	1.60	0.00
10,023.0	90.00	269.00	6,880.0	568.6	-3,408.6	3,442.0	0.86	-0.43	-0.74
10,113.0	90.20	269.50	6,879.9	567.4	-3,498.6	3,531.7	0.60	0.22	0.56
10,202.0	89.80	269.10	6,879.9	566.3	-3,587.6	3,620.3	0.64	-0.45	-0.45
10,292.0	89.00	269.50	6,880.8	565.2	-3,677.6	3,710.0	0.99	-0.89	0.44
10,382.0	87.50	267.10	6,883.6	562.6	-3,767.5	3,799.4	3.14	-1.67	-2.67
10,472.0	88.40	267.70	6,886.8	558.5	-3,857.3	3,888.7	1.20	1.00	0.67
10,562.0	88.70	268.40	6,889.1	555.4	-3,947.2	3,978.1	0.85	0.33	0.78
10,651.0	89.90	270.90	6,890.2	554.9	-4,036.2	4,066.8	3.12	1.35	2.81
10,741.0	89.90	270.60	6,890.3	556.1	-4,126.2	4,156.6	0.33	0.00	-0.33
10,831.0	89.10	270.30	6,891.1	556.8	-4,216.2	4,246.4	0.95	-0.89	-0.33
10,920.0	89.30	271.30	6,892.3	558.0	-4,305.2	4,335.2	1.15	0.22	1.12
11,010.0	89.80	271.80	6,893.1	560.5	-4,395.2	4,425.1	0.79	0.56	0.56
11,100.0	89.00	271.70	6,894.0	563.2	-4,485.1	4,515.0	0.90	-0.89	-0.11
11,190.0	89.50	271.00	6,895.2	565.3	-4,575.1	4,604.9	0.96	0.56	-0.78
11,280.0	89.30	271.30	6,896.1	567.1	-4,665.1	4,694.7	0.40	-0.22	0.33
11,370.0	89.80	270.70	6,896.8	568.7	-4,755.0	4,784.6	0.87	0.56	-0.67
11,459.0	89.40	270.60	6,897.4	569.7	-4,844.0	4,873.4	0.46	-0.45	-0.11
11,549.0	89.60	271.30	6,898.2	571.2	-4,934.0	4,963.2	0.81	0.22	0.78
11,639.0	89.80	269.10	6,898.7	571.5	-5,024.0	5,053.0	2.45	0.22	-2.44
11,729.0	89.40	269.10	6,899.3	570.1	-5,114.0	5,142.6	0.44	-0.44	0.00
11,818.0	89.10	268.50	6,900.5	568.2	-5,203.0	5,231.2	0.75	-0.34	-0.67
11,908.0	88.70	267.70	6,902.2	565.3	-5,292.9	5,320.6	0.99	-0.44	-0.89
11,998.0	89.20	269.10	6,903.9	562.7	-5,382.8	5,410.1	1.65	0.56	1.56
12,088.0	89.20	268.40	6,905.1	560.8	-5,472.8	5,499.7	0.78	0.00	-0.78
12,177.0	90.50	269.90	6,905.4	559.5	-5,561.8	5,588.3	2.23	1.46	1.69
12,267.0	90.30	269.30	6,904.7	558.8	-5,651.8	5,678.0	0.70	-0.22	-0.67
12,357.0	89.60	267.70	6,904.8	556.5	-5,741.8	5,767.5	1.94	-0.78	-1.78
12,447.0	89.10	268.40	6,905.8	553.4	-5,831.7	5,856.9	0.96	-0.56	0.78
12,537.0	90.20	270.00	6,906.4	552.2	-5,921.7	5,946.6	2.16	1.22	1.78
12,627.0	89.50	268.80	6,906.6	551.2	-6,011.7	6,036.2	1.54	-0.78	-1.33
12,716.0	89.80	270.30	6,907.2	550.5	-6,100.7	6,124.9	1.72	0.34	1.69
12,806.0	89.60	269.90	6,907.6	550.7	-6,190.7	6,214.6	0.50	-0.22	-0.44
12,896.0	89.30	269.50	6,908.5	550.2	-6,280.7	6,304.3	0.56	-0.33	-0.44
12,986.0	90.80	267.80	6,908.4	548.1	-6,370.6	6,393.9	2.52	1.67	-1.89
13,076.0	89.40	268.80	6,908.3	545.4	-6,460.6	6,483.4	1.91	-1.56	1.11
13,166.0	88.40	270.40	6,910.0	544.8	-6,550.6	6,573.0	2.10	-1.11	1.78
13,256.0	88.10	269.90	6,912.7	545.0	-6,640.5	6,662.8	0.65	-0.33	-0.56
13,301.0	88.20	269.90	6,914.2	544.9	-6,685.5	6,707.6	0.22	0.22	0.00
13,751.0	88.20	269.90	6,928.3	544.2	-7,135.3	7,156.0	0.00	0.00	0.00

Steadfast E27-63-1HN BHL 990'FSL & 2105'FEL

Checked By: _____	Approved By: _____	Date: _____
-------------------	--------------------	-------------