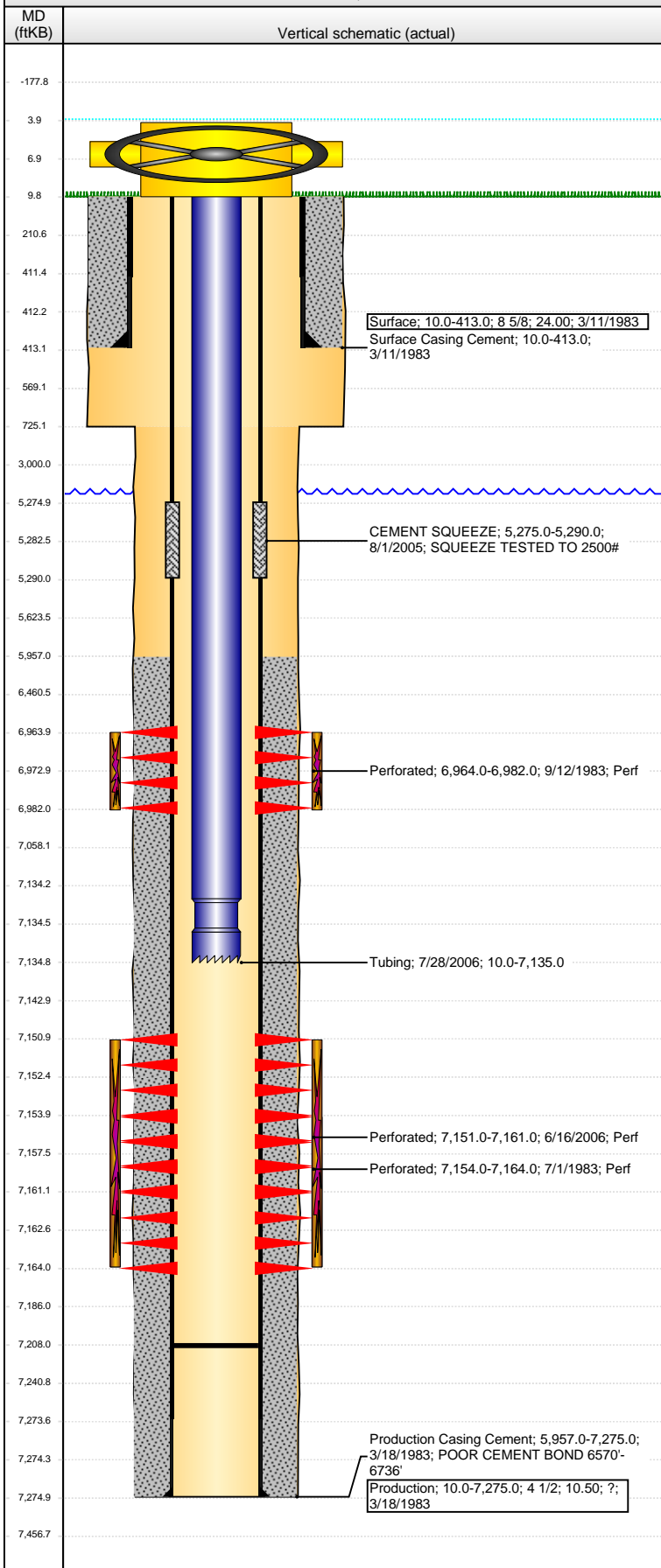


Well Name: MOBILE PREMIX 03-35

VERTICAL - ORIGINAL HOLE, 11/18/2014 2:39:31 PM



Well Header

API 05-123-10981	Business Unit DJ BASIN	District 15	Well Config VERTICAL
Original KB Elevation (ft) 4,688.00	KB - GL / MSL (ftKB) 10.00	Spud Date 3/11/1983	P & A Date

Comment

POSSIBLE PIECES OF PACKER STILL IN HOLE @ 7203'
8/2005 HIC BETWEEN 5275'-5290', REPAIRED WITH CMT SQZ

Directions To Well

Congressional Location

Quarter 1	Quarter 2	Quarter 3	Quarter 4	Section	Township	Twnshp N...	Range	Rng E/W Dir
		SW	NW	35	6	N	66	W

Bottom Hole Location

North-South Distance (ft)	From N or S Line	East-West Distance (ft)	From E or W Line
---------------------------	------------------	-------------------------	------------------

Plug Back Total Depths

Date	Depth (ftKB)	Method	Com
6/26/1983	7,220.0	CASED HOLE LOG	DEPTH LOGGER ON CBL
7/28/2006	7,208.0	TAG	C/O

Wellbore Sections

Section Des	Size (in)	Act Top, MD (ftKB)	Act Btm, MD (ftKB)
SURFACE	12 1/4	10.0	725.0
PRODUCTION	7 7/8	725.0	7,275.0

Zone Statuses

Zone Name	Status Date	Status	Job
CODELL	7/12/1983	PR	DRILLING/COMPLETION - ORIGINAL, 3/11/1983 00:00
CODELL	9/12/1983	SI	RECOMPLETION, 8/29/1983 00:00
CODELL	11/13/1984	PR	COMMINGLED ZONES, 11/9/1984 00:00
CODELL	7/28/2005	SI	CASING REPAIR, 7/27/2005 00:00
CODELL	11/12/2005	PR	CASING REPAIR, 7/27/2005 00:00
CODELL	7/7/2006	PR	RE-FRAC, 6/15/2006 00:00
NIOBRARA	9/21/1983	PR	DRILLING/COMPLETION - ORIGINAL, 3/11/1983 00:00
NIOBRARA	11/13/1984	PR	COMMINGLED ZONES, 11/9/1984 00:00
NIOBRARA	7/28/2005	SI	CASING REPAIR, 7/27/2005 00:00
NIOBRARA	11/12/2005	PR	CASING REPAIR, 7/27/2005 00:00

Casing Strings

Surface, 413.0ftKB

Casing Description	Run Date	OD (in)	Wt/Len (l...)	Grade	Top, MD (ft...)	MD (ftKB)
Surface	3/11/1983	8 5/8	24.00		10.0	413.0

Production, 7,275.0ftKB

Casing Description	Run Date	OD (in)	Wt/Len (l...)	Grade	Top, MD (ft...)	MD (ftKB)
Production	3/18/1983	4 1/2	10.50	?	10.0	7,275.0

Cement

Description	Top Depth (ftKB)	Bottom Depth (ftKB)
Surface Casing Cement	10.0	413.0
Description	Top Depth (ftKB)	Bottom Depth (ftKB)
Production Casing Cement	5,957.0	7,275.0
Description	Top Depth (ftKB)	Bottom Depth (ftKB)
CEMENT SQUEEZE	5,275.0	5,290.0

Tubing Components

Item Des	OD (in)	Wt (lb/ft)	Grade	Jts	Len (ft)	Btm (ftKB)	Btm (TVD) (ftKB)
Tubing	2 3/8	4.70	?	216	7,124.30	7,134.3	
Notched collar	2 3/8				0.70	7,135.0	

Perforation Data

Zone	Bnch/St g	Entered Shot Total	Top (ftKB)	Btm (ftKB)	Date
NIOBRARA, ORIGINAL HOLE		72	6,964.00	6,982.00	9/12/1983
CODELL, ORIGINAL HOLE		44	7,151.00	7,161.00	6/16/2006
CODELL, ORIGINAL HOLE		40	7,154.00	7,164.00	7/1/1983

Stimulations & Treatments

Date	Zone	Primary Job Type
7/1/1983	CODELL, ORIGINAL HOLE	DRILLING/COMPLETION - ORIGINAL
Technical Result	Tech Result Details	Tech Result Note

Comment

Well Name: MOBILE PREMIX 03-35

VERTICAL - ORIGINAL HOLE, 11/18/2014 2:39:34 PM

Stimulations & Treatments

Date 9/20/1983	Zone NIOBRARA, ORIGINAL HOLE	Primary Job Type RECOMPLETION
Technical Result	Tech Result Details	Tech Result Note

Comment

Date 7/6/2006	Zone CODELL, ORIGINAL HOLE	Primary Job Type RE-FRAC
Technical Result	Tech Result Details	Tech Result Note

Comment

Other In Hole

Run Date	Des	OD (in)	Top (ftKB)	Btm (ftKB)

Logs

Date	Type	Top, MD (ftKB)	Btm, MD (ftKB)
3/18/1983	COMPENSATED DENSITY	4,296.0	7,261.0
3/18/1983	INDUCTION	416.0	7,260.0
6/26/1983	CBL/CCL/GR	5,850.0	7,218.0

