

Resolute E25-63-1HN noble energy TVD 1" : 100'

Company: Noble Energy Inc

Well Name: Steadfast E27-62-1HN

API: 05-123-38156

Rig Id: Precision 828

State: Colorado

County/Parish: Weld

Country: USA

Survey Company: Ensign Directional

Job number: 207-P828-33

Company Man 1 Gary Stapleton

Directional Driller 1 Tyler Batchelder

Directional Driller 2 Matt Mason

MWD 1 Nick Jones

MWD 2 Damien Hunter

Log measurements: Gamma

Depth measured from: KB

Maximum temperature:

Depth Date

Start: 59.4 ft 6/18/2014

End: 13603 ft 6/25/2014

Casing Depth Size

Surface: 587 9.625

Intermediate: 7180 7

Mud Type: Water Based

Density:

Viscosity:

Rm:

Rmf:

Rmc:

Elevations

KB: 4692

GL: 4676

DF: 4692

Run	Bit Size	Gamma	Survey	Offsets	Start	End	Start	End	Dates
-----	----------	-------	--------	---------	-------	-----	-------	-----	-------

1	8 3/4	59.06	54.06	587	7190	13603	6/18/2014	6/20/2014	
---	-------	-------	-------	-----	------	-------	-----------	-----------	--

2	6 1/8	66.00	61.00	7190			6/22/2014	6/25/2014	
---	-------	-------	-------	------	--	--	-----------	-----------	--

3									
---	--	--	--	--	--	--	--	--	--

4									
---	--	--	--	--	--	--	--	--	--

5									
---	--	--	--	--	--	--	--	--	--

6									
---	--	--	--	--	--	--	--	--	--

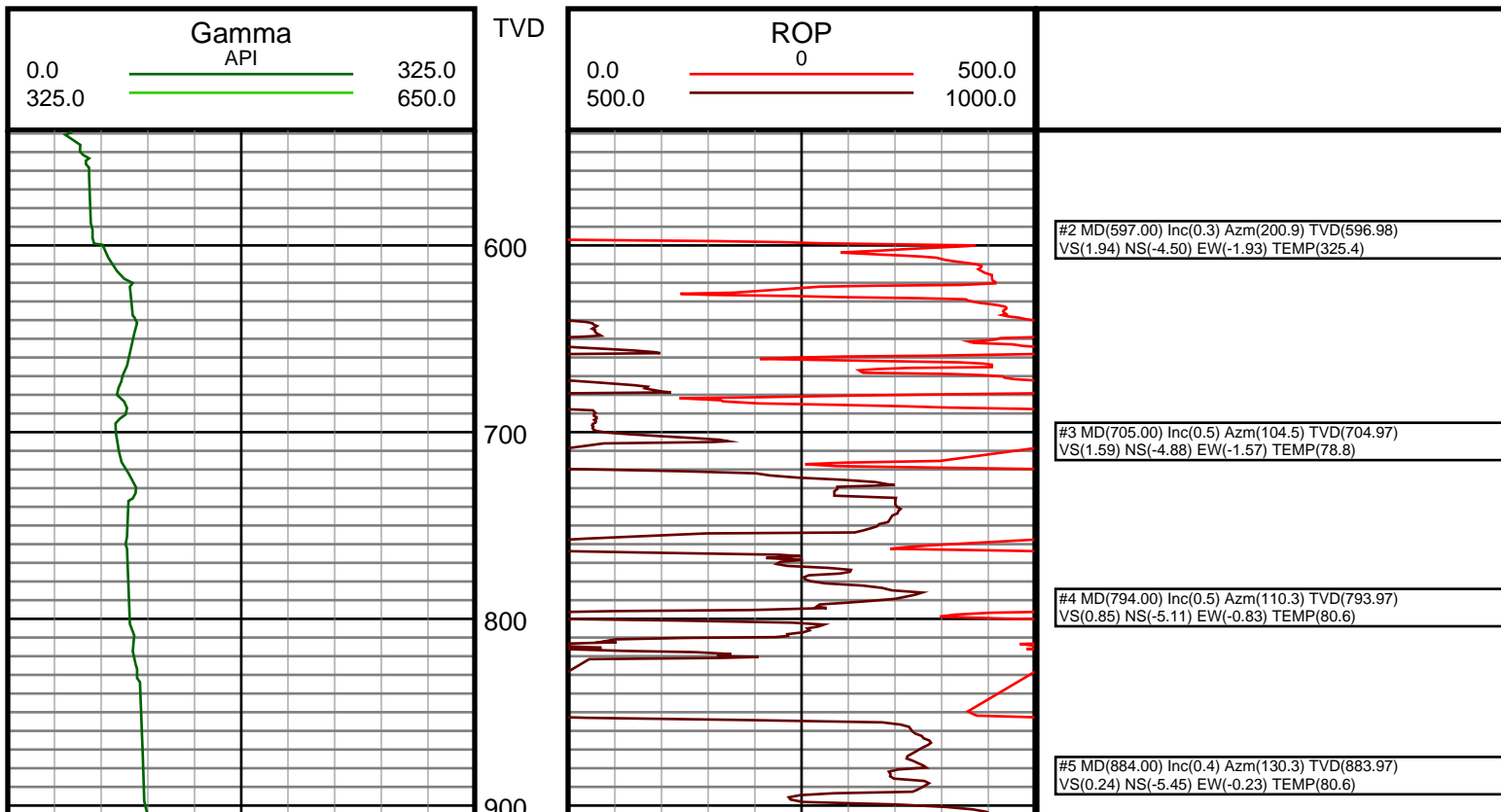
7									
---	--	--	--	--	--	--	--	--	--

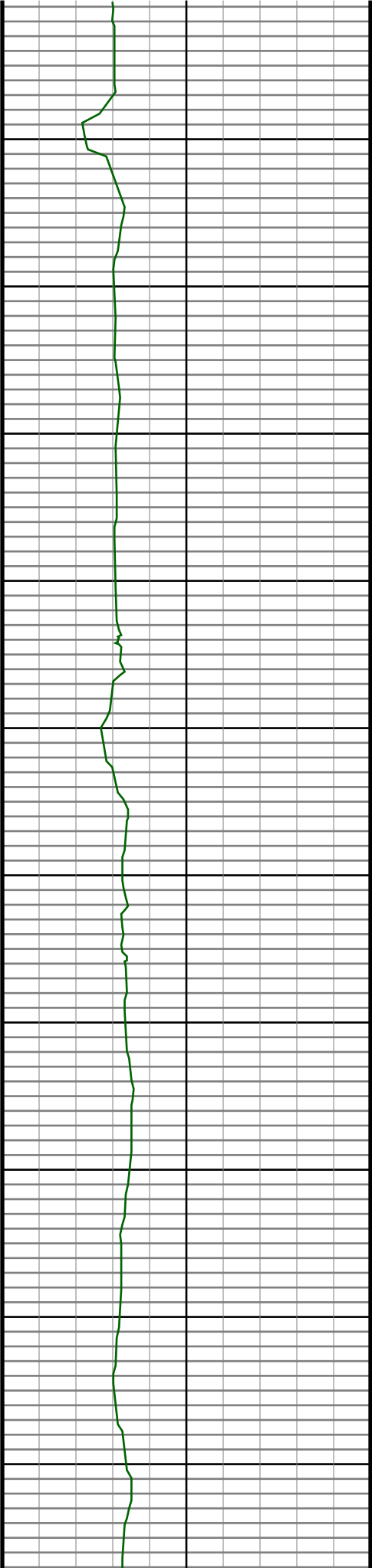
8									
---	--	--	--	--	--	--	--	--	--

9									
---	--	--	--	--	--	--	--	--	--

10									
----	--	--	--	--	--	--	--	--	--

Ensign Directional uses its best efforts to provide its customers with accurate information and interpretations in conjunction with services performed but will not be held liable or responsible for the accuracy of such information or interpretation.





1000

1100

1200

1300

1400

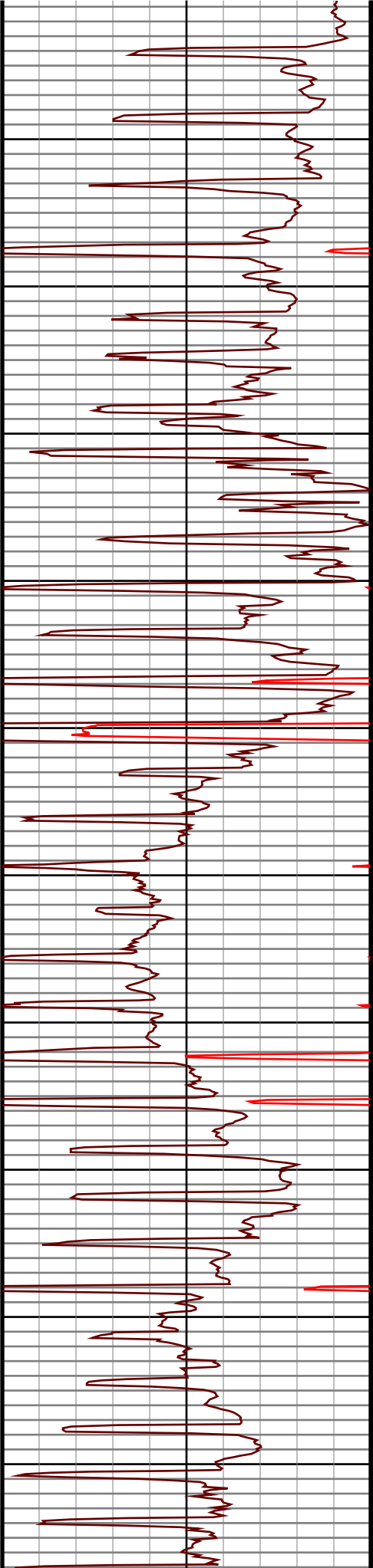
1500

1600

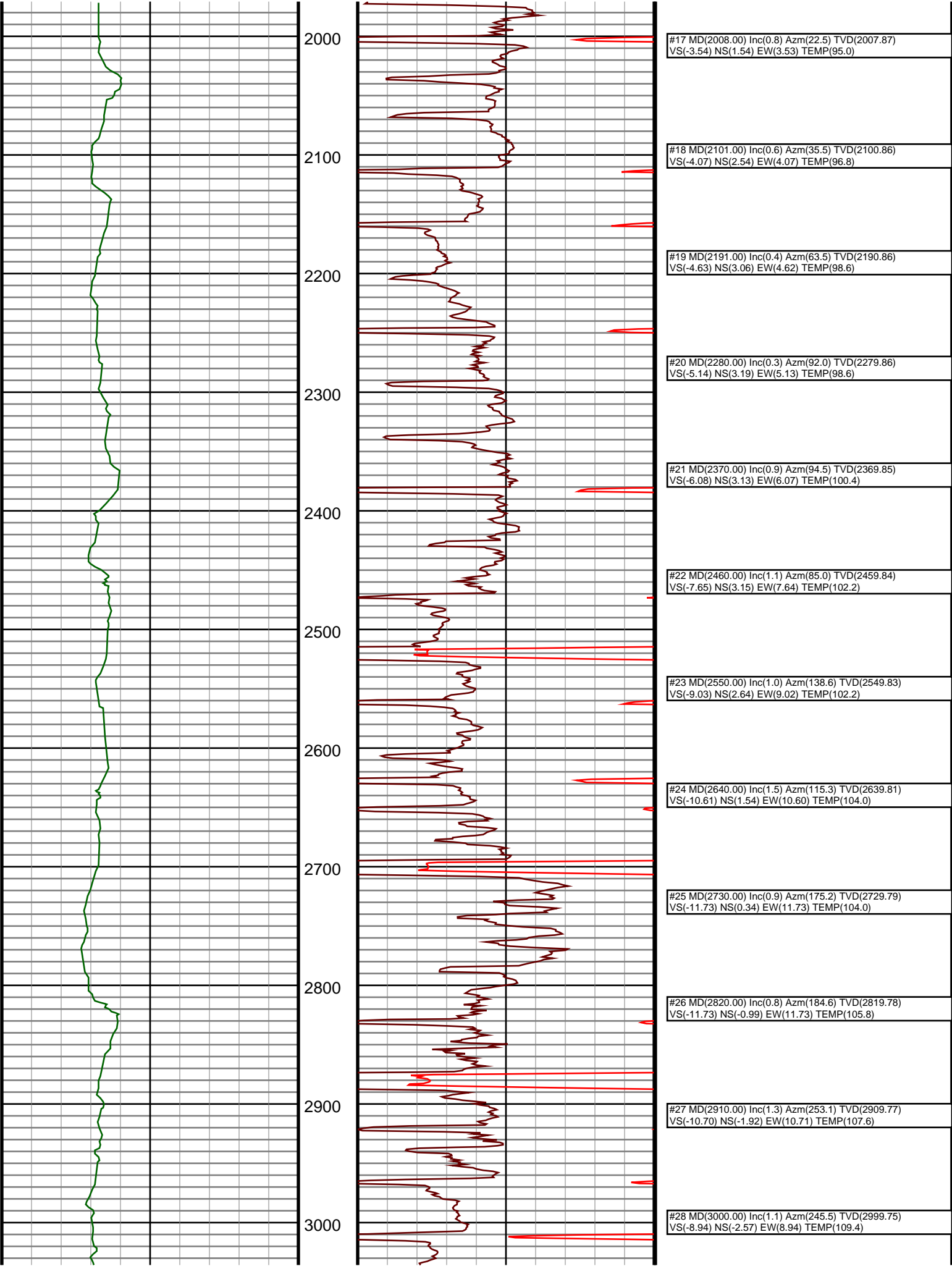
1700

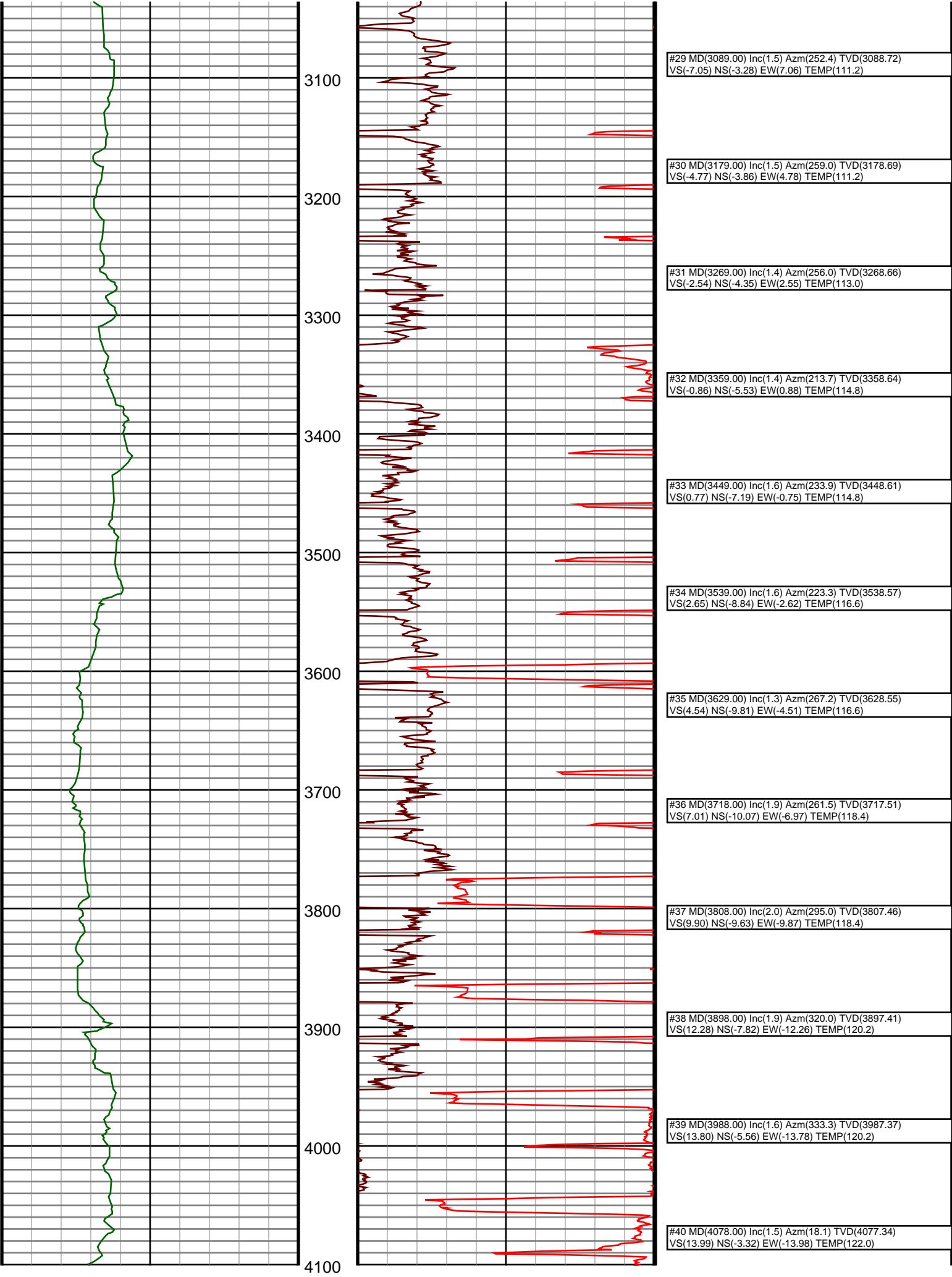
1800

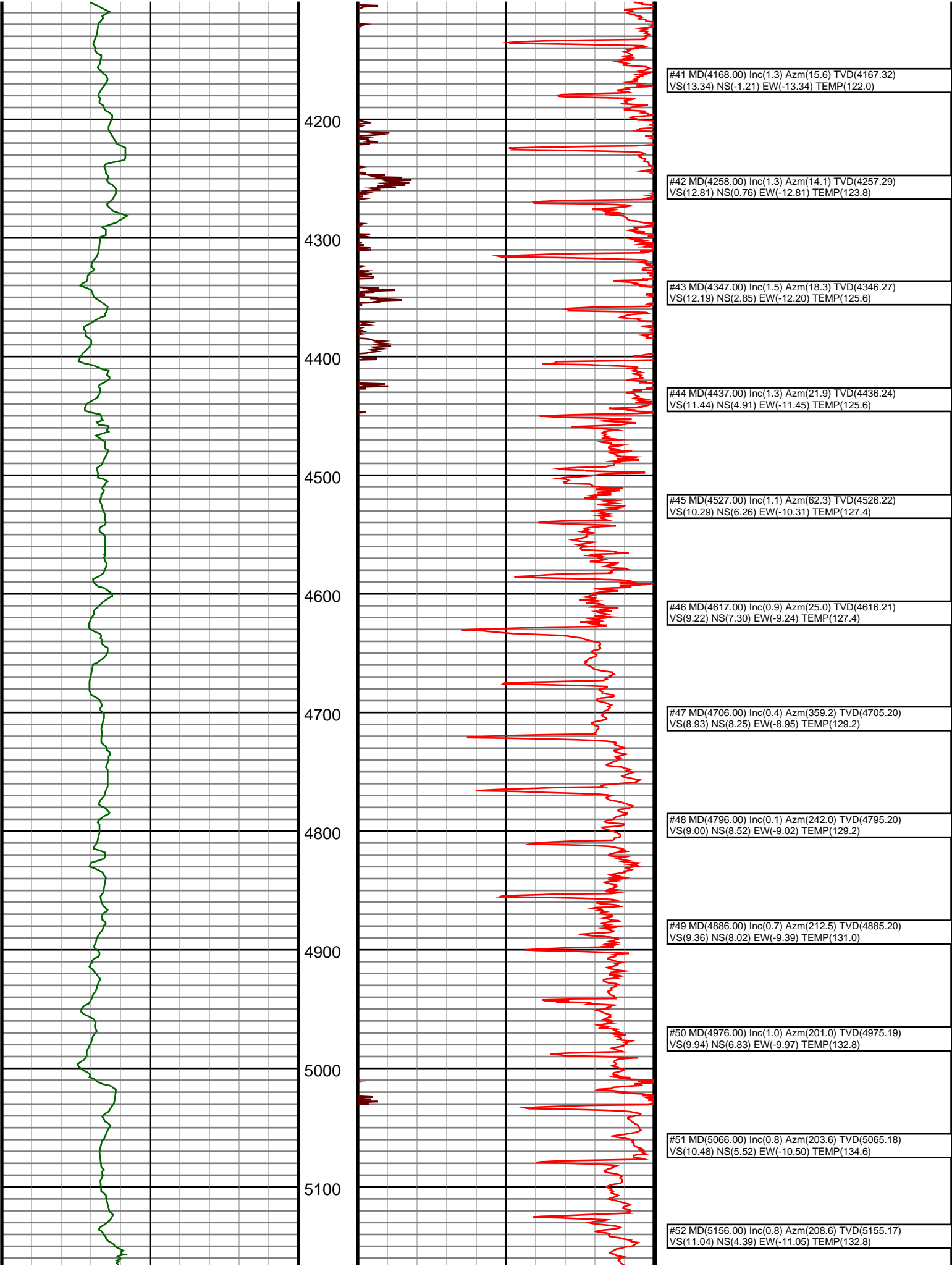
1900

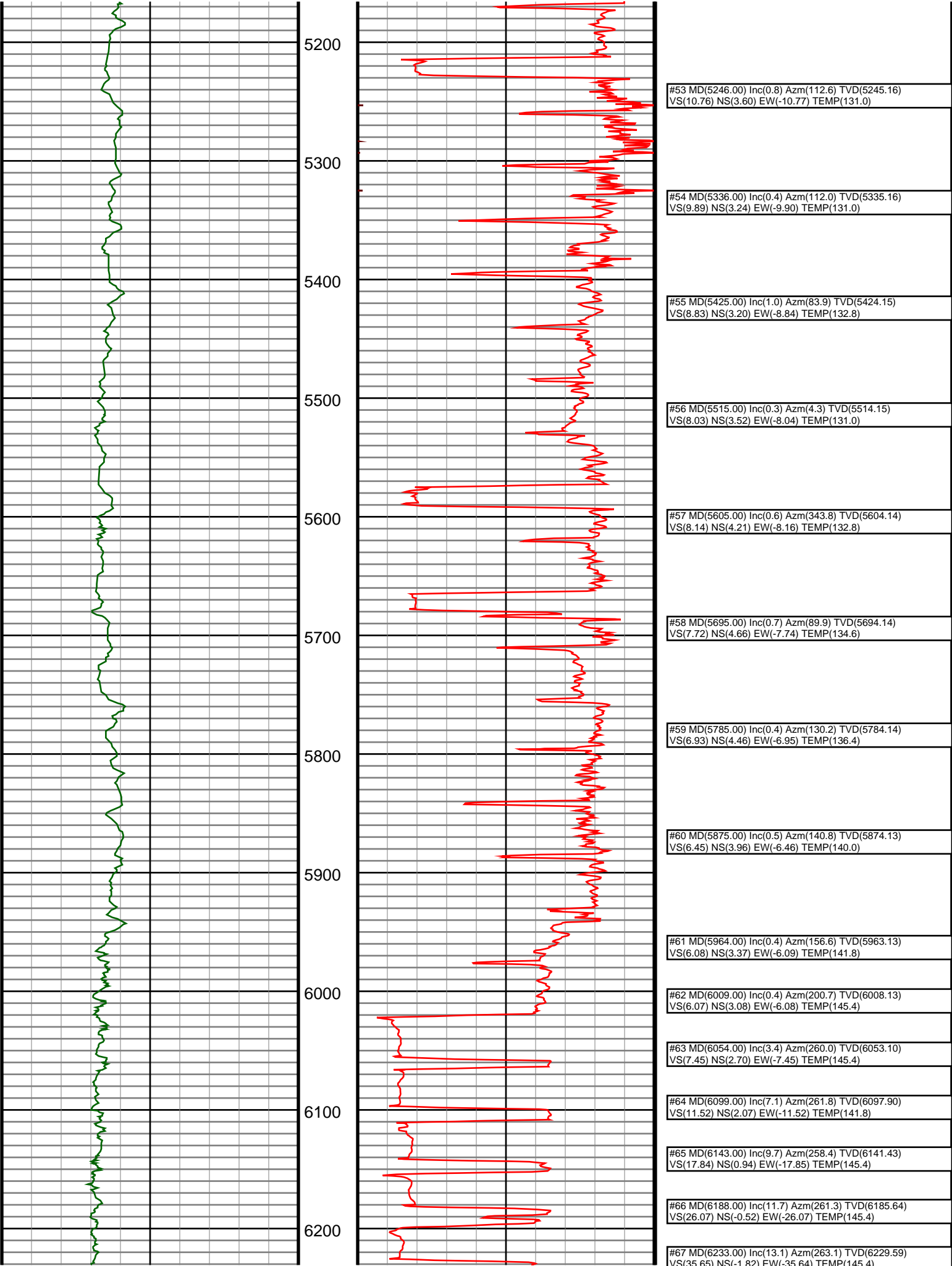


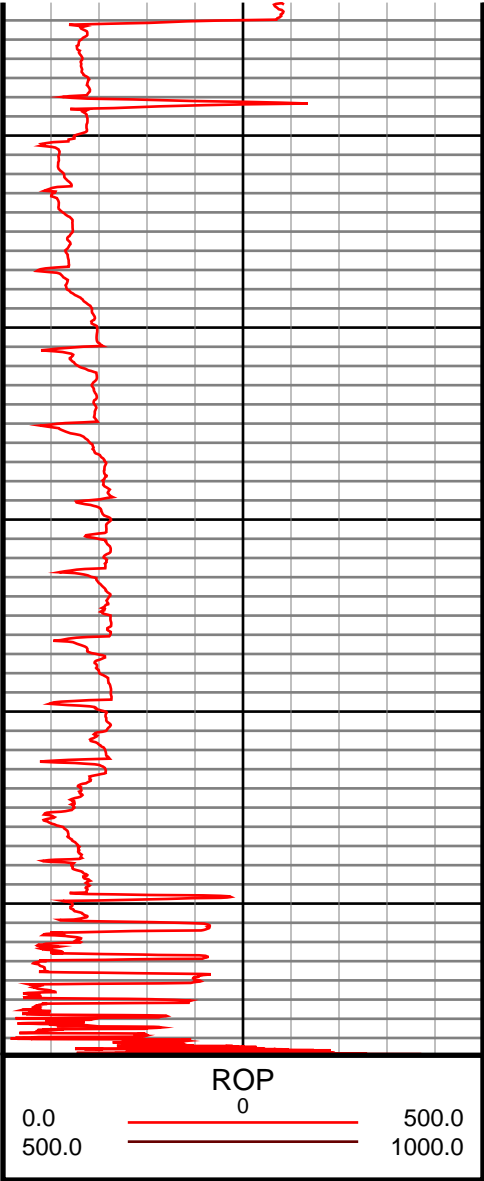
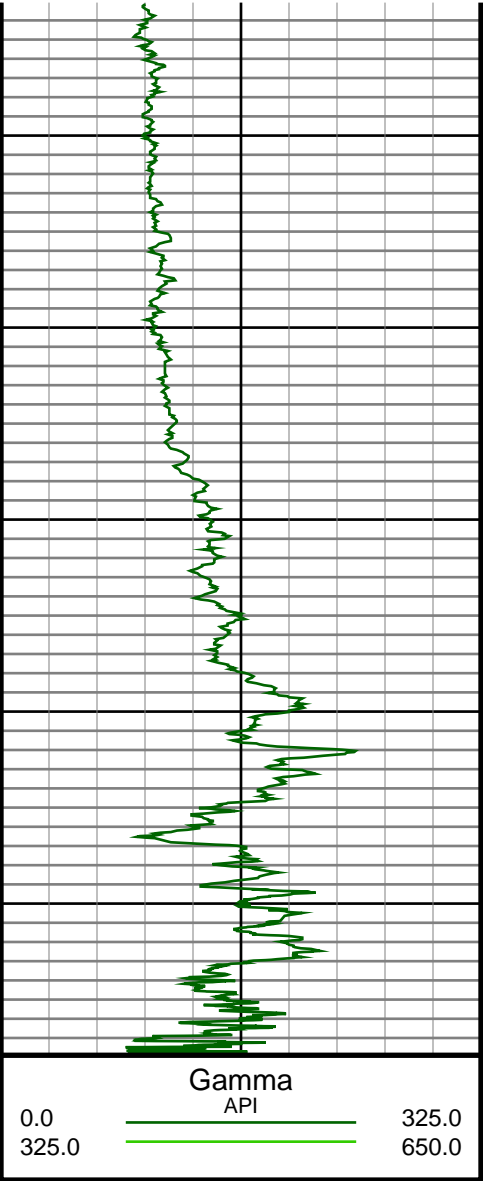
#6 MD(974.00) Inc(0.4) Azm(124.5) TVD(973.97) VS(-0.25) NS(-5.83) EW(0.27) TEMP(80.6)
#7 MD(1064.00) Inc(0.3) Azm(126.0) TVD(1063.96) VS(-0.70) NS(-6.15) EW(0.72) TEMP(80.6)
#8 MD(1158.00) Inc(0.4) Azm(140.6) TVD(1157.96) VS(-1.11) NS(-6.55) EW(1.13) TEMP(82.4)
#9 MD(1252.00) Inc(0.7) Azm(139.0) TVD(1251.96) VS(-1.69) NS(-7.23) EW(1.71) TEMP(82.4)
#10 MD(1346.00) Inc(0.5) Azm(151.3) TVD(1345.95) VS(-2.26) NS(-8.03) EW(2.29) TEMP(84.2)
#11 MD(1440.00) Inc(1.1) Azm(359.5) TVD(1439.95) VS(-2.45) NS(-7.48) EW(2.48) TEMP(87.8)
#12 MD(1535.00) Inc(0.9) Azm(17.7) TVD(1534.93) VS(-2.68) NS(-5.86) EW(2.70) TEMP(89.6)
#13 MD(1629.00) Inc(0.8) Azm(0.8) TVD(1628.92) VS(-2.92) NS(-4.50) EW(2.93) TEMP(89.6)
#14 MD(1724.00) Inc(0.5) Azm(11.6) TVD(1723.92) VS(-3.01) NS(-3.43) EW(3.02) TEMP(91.4)
#15 MD(1818.00) Inc(1.1) Azm(359.5) TVD(1817.91) VS(-3.09) NS(-2.13) EW(3.10) TEMP(91.4)
#16 MD(1913.00) Inc(1.3) Azm(5.1) TVD(1912.89) VS(-3.18) NS(-0.14) EW(3.19) TEMP(-61.6)











#68 MD(6278.00) Inc(15.5) Azm(268.6) TVD(6273.20)
VS(46.73) NS(-2.58) EW(-46.72) TEMP(145.4)

#69 MD(6323.00) Inc(17.3) Azm(272.5) TVD(6316.37)
VS(59.42) NS(-2.43) EW(-59.42) TEMP(145.4)

#70 MD(6368.00) Inc(20.7) Azm(268.5) TVD(6358.91)
VS(74.06) NS(-2.35) EW(-74.06) TEMP(262.4)

#71 MD(6413.00) Inc(24.1) Azm(265.8) TVD(6400.51)
VS(91.19) NS(-3.23) EW(-91.18) TEMP(262.4)

#72 MD(6458.00) Inc(27.7) Azm(265.2) TVD(6440.98)
VS(110.78) NS(-4.78) EW(-110.77) TEMP(262.4)

#73 MD(6503.00) Inc(31.5) Azm(266.5) TVD(6480.10)
VS(132.95) NS(-6.37) EW(-132.93) TEMP(262.4)

#74 MD(6548.00) Inc(35.3) Azm(268.8) TVD(6517.67)
VS(157.70) NS(-7.36) EW(-157.68) TEMP(262.4)

#75 MD(6593.00) Inc(39.1) Azm(271.8) TVD(6553.51)
VS(184.89) NS(-7.19) EW(-184.87) TEMP(262.4)

#76 MD(6638.00) Inc(43.6) Azm(270.3) TVD(6587.28)
VS(214.61) NS(-6.66) EW(-214.59) TEMP(262.4)

#77 MD(6683.00) Inc(48.2) Azm(269.7) TVD(6618.59)
VS(246.91) NS(-6.67) EW(-246.89) TEMP(262.4)

#78 MD(6728.00) Inc(53.1) Azm(267.4) TVD(6647.11)
VS(281.69) NS(-7.57) EW(-281.66) TEMP(262.4)

#79 MD(6772.00) Inc(58.9) Azm(265.6) TVD(6671.71)
VS(318.08) NS(-9.82) EW(-318.05) TEMP(159.8)

#80 MD(6817.00) Inc(64.7) Azm(265.0) TVD(6692.97)
VS(357.60) NS(-13.07) EW(-357.56) TEMP(159.8)

#82 MD(6907.00) Inc(71.7) Azm(266.6) TVD(6725.93)
VS(441.06) NS(-19.48) EW(-441.00) TEMP(159.8)

#84 MD(6997.00) Inc(77.9) Azm(267.4) TVD(6749.52)
VS(527.75) NS(-24.25) EW(-527.68) TEMP(161.6)

#93 MD(7665.00) Inc(90.2) Azm(269.5) TVD(6778.46)
VS(1134.81) NS(-16.36) EW(-1133.97) TEMP(136.4)